



WHEN YOU KNOW THE DIFFERENCE™



BayStar

MOTORHOME

09





This Is Just the Beginning

The 2009 Bay Star introduces you to a lifestyle of possibilities. Just like all Newmar motorhomes, it's built using decades of experience. And it comes in a reasonable price range that offers an array of features essential for any trip. So, when you're ready to experience life on the open road in style and comfort, start and end every journey with the Bay Star.

- a. Kitchen Comes Equipped with Three-burner Range, Norcold® 8 cu. ft. Refrigerator and Microwave Oven
- b. Living Area Features Flexsteel® Furniture, Booth Dinette and Cabinets for Storage

Shown in 2901 floorplan with Mineral Décor and Baltic Beech Cabinetry.



Bay Star
by Newmar.



- a. Bedroom Cabinets and Drawers Provide Room for Belongings and a 19-inch LCD TV (optional) Offers Entertainment
- b. Pull-out Step in Bathroom Doubles as a Step-stool and Storage Drawer
- c. Queen-sized Bed Comes with a Tufted Mattress, Quilted Bedspread and Accent Pillow and has Lifts on the Bed Top for Accessing a Storage Area

Shown in 2901 floorplan with Mineral Décor and Baltic Beech Cabinetry.



Bay Star
by Newmar.







- a. Optional Remote-controlled Convex Exterior Mirrors
- b. Large Pass-through Storage with Access From Either Side
- c. Cockpit Features Include Tilt Steering Wheel, Rearview Monitor System and AM/FM Dash Radio with CD Player and MP3 Adapter
- d. Full-Paint Masterpiece Finish™ with Front Protective Film and Rear Ladder (optional) in Chestnut Exterior Paint Scheme



Bay Star by Newmar.

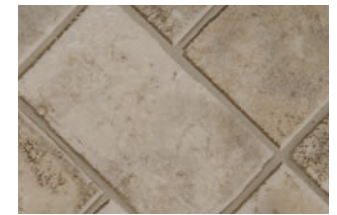
Sofa

- a. Claret Color Scheme (top to bottom)
- b. Chestnut Color Scheme (top to bottom)
- c. Mineral Color Scheme (top to bottom)

Dinette



Baltic Beech Cabinetry, Standard



Vinyl Flooring, Standard

Bedspread



Fall Spice Cabinetry, Optional

Countertops



Cabinet Hardware

Carpet



CEILINGS: R-VALUE = 16

- a. BriteTEK™ Roof
- b. 9mm Wood Decking
- c. Fiberglass Batten Insulation
- d. A/C Ducting
- e. Aluminum Roof Truss
- f. Kraft Paper Vapor Barrier
- g. 5/8" Bead Foam
- h. 3/16" Panel
- i. Padded Vinyl Overlay

WALLS: R-VALUE = 11

- j. 3/16" Plywood Interior Wall
- k. 5/8" Bead Foam
- l. Kraft Paper Vapor Barrier
- m. Fiberglass Batten Insulation
- n. 3/16" Plywood Exterior Wall
- o. Composite One-piece Gelcoat Exterior Sidewall
- p. 16" On-center Aluminum Framing with 3 1/2" Header

FLOORING: R-VALUE = 11

- q. Carpet/Tile
- r. Carpet Padding
- s. 5/8" Floor Decking
- t. Fiberglass Batten Insulation
- u. 2" x 3" Wood Framing
- v. Polyethylene Moisture Barrier
- w. Aluminum Ducting



- 1. 13.5M Central Air Conditioner
- 2. One-piece Windshield
- 3. Stainless Steel Wheel Simulators
- 4. Tinted Safety-glass Windows
- 5. Top-hinged Baggage Doors

16" ON-CENTER FRAMING

Just like a fine site-built residential home, your Newmar home is framed 16 inches on center, which allows the best placement of outlets, switches and other components.

SIKAFLEX®

Used throughout Newmar construction, Sikaflex elastic adhesive is one of the strongest bonding agents on the market today. It also serves as a sealant against air and water. And it helps dampen both sound and vibration.

PROTECTED C-CHANNELS

To keep the electrical wiring that runs through holes in the aluminum-frame C-channels from chafing, each hole is ringed with a plastic grommet.

FULL-PAINT MASTERPIECE FINISH™

Newmar's Full-Paint Masterpiece Finish raises the exterior beauty and durability of our motorhomes to a whole new level. To obtain such rich-looking graphics, we use up to 16 gallons of paint on each unit, applying three coats each of primer, a base coat and color for graphics, and end with a final clear coat.

NEWMAR TOTAL COMFORT™ CENTRAL AIR CONDITIONING

Experience RV air conditioning just like that found in site-built homes. Newmar's Total Comfort Central Air Conditioning is actually two separate, fully ducted systems: one to distribute incoming cool air, the other to quickly and effectively remove warm air from every living area.

NEWMAR EXPRESS LIMITED WARRANTY

Every Bay Star Motorhome is backed by Newmar's one-year limited warranty/unlimited miles. Ask your Newmar dealer for details.

THE LIMITED FIVE-YEAR STRUCTURAL WARRANTY

If any part of your Newmar recreational vehicle superstructure (which is the steel/aluminum structure of the sidewall, roof or frame) fails to perform properly within five years from the date of purchase, due to faulty workmanship or material supplied by Newmar, it will be repaired without charge for either parts or labor by Newmar. This structural warranty is available only to the original purchaser and is non-transferable.

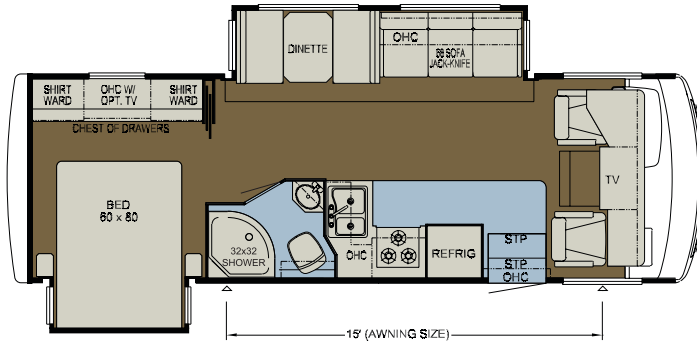


Bay Star

by Newmar.

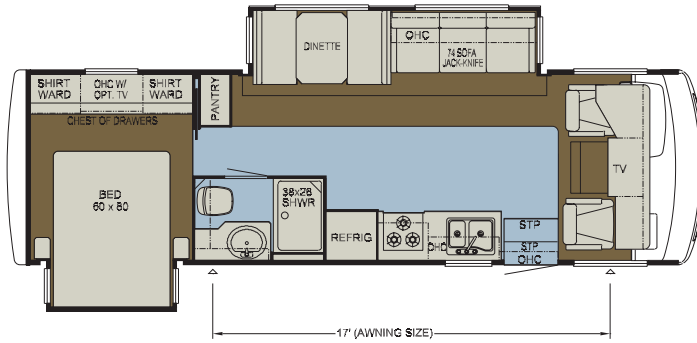
BSCA 2702

Length: 27' 9"
Width: 101.5"
Option: K779



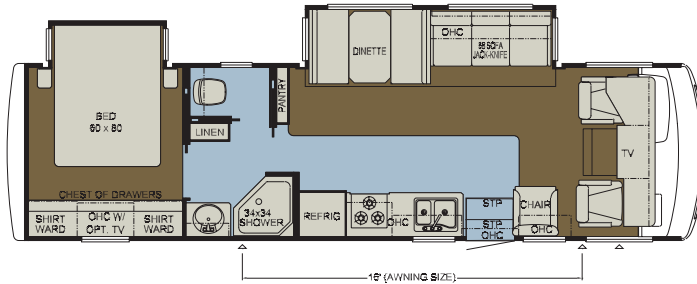
BSCA 2901

Length: 29' 9"
Width: 101.5"
Option: K779



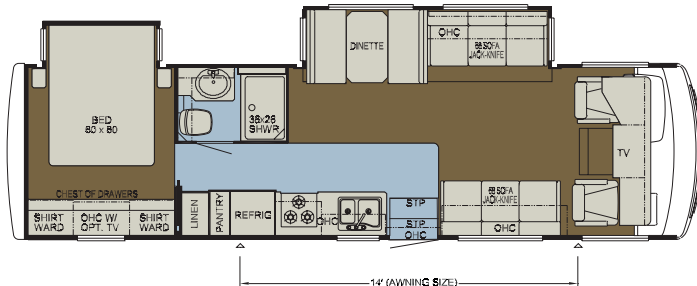
BSCA 3201

Length: 32' 10"
Width: 101.5"
Option: K779



BSCA 3202

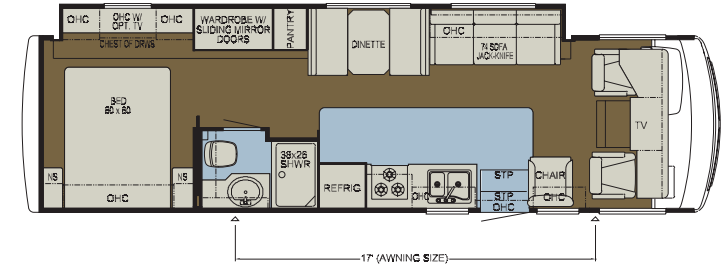
Length: 32' 9"
Width: 101.5"
Option: K779



■ Carpet ■ Vinyl Flooring

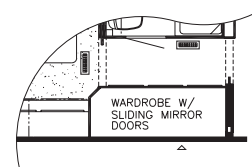
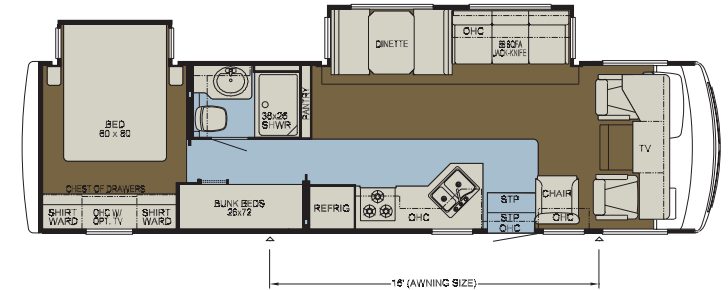
BSCA 3205

Length: 32' 10"
Width: 101.5"
Option: K779



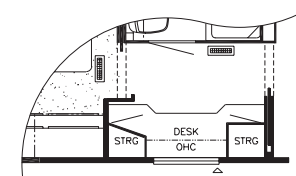
BSCA 3304

Length: 33' 10"
Width: 101.5"
Options: K040_1, K329_1, K779



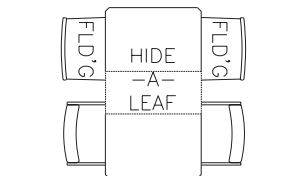
K040_1

Wardrobe with Sliding Mirror Doors
3304



K329_1

Desk
3304



K779

Freestanding Dinette with Two Folding Chairs
2702, 2901, 3201, 3202, 3205, 3304

STANDARD FEATURES

CHASSIS FEATURES

- Ford® F-53 18,000 lb. Chassis (27'-29' floorplans)
- Ford F-53 20,500 lb. Chassis (32'-33' floorplans)
- Electric Leveling Jacks with Automatic Control
- Cruise Control
- Tilt Steering Wheel
- Stainless Steel Wheel Simulators

AIR CONDITIONING & HEATING

- 13.5M Brisk® Central Air Conditioner
- Propane Furnace with In-floor Ducted Heat
- Dash Heater and Air Conditioner
- Propane Leak Detector

APPLIANCES & ACCESSORIES

- Three-burner Range with Metal Oven Door & Piezo Ignition
- Bi-fold Range Cover
- Range Hood with Light and Fan
- Norcold® 8 cu. ft. Refrigerator
- Black Refrigerator Front Panel
- Microwave Oven
- 6 gal. Gas/Electric Water Heater with Electronic Ignition
- 26" LCD TV in Living Area
- AM/FM Dash Radio with MP3 Adapter and CD Player
- Rearview Monitor System, Black-and-White with Audio
- TV Antenna with Power Booster with Two Interior Jacks
- Satellite Prep
- Telephone Connection with Phone Jack in Living Area
- Cable TV Connection with Rg6 Coax
- 10 Bc Fire Extinguisher, Carbon Monoxide and Smoke Detectors

CABINETS & FURNITURE

- Baltic Beech Raised-panel Cabinet Doors on Overhead Cabinets
- Booth Dinette with Seatbelts
- Laminate Countertop with Wood Edge in Kitchen with ABS Sink and Sink Covers
- Laminate Countertop with Wood Edge with ABS Bowl in Bathroom
- Residential-style Full-extension Ball-bearing Drawer Guides
- Kitchen Countertop Extension*
- Pullout Pantry*
- Flexsteel® Furniture
- Fabric Driver/Passenger Seats
- Fabric Swivel Chair*
- Lifts on Bed Top to Access Storage Area
- Tufted Mattress with Quilted Bedspread and Accent Pillow
- Pullout Step-stool with Storage in Bathroom Cabinet

ELECTRICAL FEATURES

- 4.0 kW Cummins Onan® Generator with Remote Switch and Automatic Changeover
- 30 Amp Electrical Service with Flexible Cord
- Two 12 Volt House Batteries
- Battery Disconnect Switch
- 110 Volt Exterior Receptacle
- 5 Watt Solar Panel
- 45 Amp Converter
- Daytime Headlight System
- Emergency Start Switch
- Incandescent Lights Throughout
- Lighted Wardrobe
- Manually Operated Hold-to-Run Slideout Switch
- Exterior TV Jack
- 12 Volt Auxiliary Receptacle on Dashboard

EXTERIOR FEATURES

- Full-Paint Masterpiece Finish™ with Front Protective Film
- One-piece Windshield
- Convex Exterior Mirrors with Defrost
- Entrance Door with Automatic Double Step
- Lighted Exterior Storage Compartments with Cargo Liner
- 5,000 lb. Towing Hitch with Two Extra 14 Gauge Wires
- Assist Handle at Entrance Door
- Undercoating
- Mud Flaps

INTERIOR FEATURES

- Padded Vinyl Ceiling
- Day/Night Pleated Window Shades and Lambrequins
- Mini-blinds in Kitchen and Bathroom
- Vinyl Floor in Kitchen and Bathroom
- Deluxe Carpeting with High-density Padding in Living Room and Bedroom
- Flat-panel Interior Passage Doors
- Interior Assist Handle at Main Entrance Door
- Shoe Storage Located in Entrance Step Compartment
- Wastebasket in Bathroom
- Wraparound Windshield Privacy Shade

PLUMBING & BATH FEATURES

- Demand Water System with SHURflo® Pump
- Sewage Holding-tank Rinse
- Water Heater Bypass System
- Thetford™ Aqua Magic Stool with Spray Attachment
- Towel Bars and Tissue Holder
- Towel Ladder, on Hinged Bathroom Door Only
- Tub/Shower Surround with Shower Door
- Exterior Shower
- Water Pump Switches in Bathroom and Kitchen
- Monitor Panel

WINDOWS, AWNINGS & VENTS

- Tinted Safety-glass Windows
- Power Vent with Wall Switch in Bathroom
- Skylight in Bathroom*
- A&E® 8500 Side Awning
- Slideout Covers
- Dash Fans

OPTIONAL FEATURES

OPTION PACKAGE:

- Extra 13.5M Brisk® Central Air Conditioner, 5.5 Cummins Onan® Marquis Generator and 50 Amp Service with Energy Management System (32'-33' floorplans)

AIR CONDITIONING & HEATING

- 15.0M Penguin™ Heat Pump Central Air Conditioner
- Auxiliary Heater in Bedroom

APPLIANCES & ACCESSORIES

- Surround Sound System with AM/FM Radio, DVD Player and Subwoofer
- SIRIUS® Satellite Radio Capability (Does not include monthly subscription)
- 10-disc CD Player
- 19" LCD TV and DVD Player in Bedroom
- Automatic Satellite Dish without Receiver
- DVD/VCR Player in Living Area
- CB Antenna
- High-definition Wiring With Selector Switch

CABINETS & FURNITURE

- Fall Spice Cabinetry
- Ultraleather Swivel Chair*
- Hidden-leaf Dinette Table with Four Chairs (Two Fixed, Two Folding)*
- Wardrobe in Place of Bunk Beds*
- Desk in Place of Bunk Beds*
- Ultraleather Driver and Passenger Seats

ELECTRICAL FEATURES

- 600 Watt Inverter for Living Area or Bedroom TV
- Solar Prep

EXTERIOR FEATURES

- Convex Exterior Mirrors with Defrost and Remote Control
- Rear Ladder

WINDOWS, AWNINGS & VENTS

- Double-pane Tinted Safety Glass Windows
- Rear Window (Single-pane)
- Power Vent in Kitchen
- Bunk Windows*

*CHECK WITH DEALERSHIP
ON FLOORPLAN AVAILABILITY



Bay Star

by Newmar.

Floorplan Specifications

FLOORPLAN	APP. OVERALL LENGTH ¹	WIDTH	APP. OVERALL HEIGHT	INTERIOR WIDTH	INTERIOR HEIGHT	GREY	SEWAGE	WATER	PROPANE	FURNACE	WATER HEATER
BSCA 2702	27' 9"	101.5"	12' 4"	95.5"	80"	60 gal.	40 gal.	75 gal.	25 gal.	30,000 Btu	6 gal.
BSCA 2901	29' 9"	101.5"	12' 4"	95.5"	80"	60 gal.	40 gal.	75 gal.	25 gal.	30,000 Btu	6 gal.
BSCA 3201	32' 10"	101.5"	12' 4"	95.5"	80"	60 gal.	40 gal.	75 gal.	25 gal.	30,000 Btu	6 gal.
BSCA 3202	32' 9"	101.5"	12' 4"	95.5"	80"	60 gal.	40 gal.	75 gal.	25 gal.	30,000 Btu	6 gal.
BSCA 3205	32' 10"	101.5"	12' 4"	95.5"	80"	60 gal.	40 gal.	75 gal.	25 gal.	30,000 Btu	6 gal.
BSCA 3304	33' 10"	101.5"	12' 4"	95.5"	80"	60 gal.	40 gal.	75 gal.	25 gal.	34,000 Btu	6 gal.

Ford[®] Chassis Information

FLOORPLAN	ENGINE HP	AXLE RATIO	FUEL CAP.	WHEELBASE	FRONT GAWR ²	REAR GAWR ²	GVWR ²	GCWR ²	APP. UVW	APP. NCC
BSCA 2702	362	5.38	75 gal.	172"	7,000 lb.	11,000 lb.	18,000 lb.	26,000 lb.	15,130 lb.	2,870 lb.
BSCA 2901	362	5.38	75 gal.	190"	7,000 lb.	11,000 lb.	18,000 lb.	26,000 lb.	15,630 lb.	2,370 lb.
BSCA 3201	362	5.38	75 gal.	200"	7,500 lb.	13,500 lb.	20,500 lb.	26,000 lb.	16,445 lb.	4,055 lb.
BSCA 3202	362	5.38	75 gal.	200"	7,500 lb.	13,500 lb.	20,500 lb.	26,000 lb.	16,426 lb.	4,074 lb.
BSCA 3205	362	5.38	75 gal.	208"	7,500 lb.	13,500 lb.	20,500 lb.	26,000 lb.	16,666 lb.	3,834 lb.
BSCA 3304	362	5.38	75 gal.	208"	7,500 lb.	13,500 lb.	20,500 lb.	26,000 lb.	16,882 lb.	3,618 lb.

¹ Lengths do not include the rear ladder.

² Specifications are supplied by chassis manufacturer.

GAWR: Gross Axle Weight Rating is the maximum permissible weight for an axle.

GVWR: Gross Vehicle Weight Rating is the maximum permissible weight of a fully loaded motorhome.

GCWR: Gross Combination Weight Rating is the value specified by the manufacturer of the vehicle as the maximum allowable loaded weight of this motorhome and any towed trailer or towed vehicle.

UVW: Unloaded Vehicle Weight is the weight of this motorhome as built at the factory with full fuel, engine oil and coolants. The UVW does not include cargo, fresh water, LP gas or dealer-installed accessories.

NCC: Net Carrying Capacity is the maximum weight of all occupants, including the driver, personal belongings, food, fresh water, waste water, LP gas, tools, tongue weight of towed vehicle, dealer-installed accessories, etc., that can be carried by the motorhome.



The Newmar Factory Tour
 We'd love to have you visit our state-of-the-art production facility in Nappanee, Indiana. Factory tours are given Monday through Friday at 10 a.m. and 1 p.m. Eastern Standard Time. Please arrive 15 minutes before the hour, and check in at the tour area located in Building Nine on Cheyenne Street. No open-toed sandals can be worn, and children under the age of eight are not allowed to take the tour. For more information, please call 1-800-860-0086.

The Newmar Difference

Over the past 40 years, Newmar has created a heritage devoted to quality, innovation, luxury and Amish craftsmanship. Newmar products incorporate sound construction principles, such as the leveled and squared chassis, sub-floor structure that's integrated and welded to the chassis rail and insulation that makes them easy to heat and cool. We use a real-world wiring system and we test and weigh each and every vehicle to make sure it meets our high expectations. We also provide custom-built touches, like our hand-crafted cabinetry. With Newmar, you get the ultimate in luxury from a company that's dedicated to its roots and stands for the utmost in quality.



WHEN YOU KNOW THE DIFFERENCE™

Bay Star

2009 Motorhome

NEWMAR CORPORATION • 355 N DELAWARE ST • PO BOX 30 • NAPPANEE IN 46550-0030
 574-773-7791 • FAX 574-773-2895 • www.newmarcorp.com

Some features shown in our literature are optional. Colors and finishes are photographic representations. The actual materials may look different. Prices, specifications and floorplans are subject to change at Newmar's discretion, without prior notice or obligation. Please see your dealer for actual samples and specifications. © 2008 Newmar Corporation. Printed in the U.S.A. (03/08)