

FIRST-CLASS TRAVEL **GREYHAWK**



GREYHAWK

MOTORHOMES BY JAYCO

GREYHAWK®

MOTORHOMES BY JAYCO®

FIRST-CLASS TRAVEL

Grip the steering wheel. This is what it feels like to step up into a new class. Now, look around. This is how you travel in class. Say hello to the Jayco Greyhawk—the most value-packed, entry-level motorhome on the market today. Built on a Ford E-450 chassis with a 305 HP Triton engine, Greyhawk delivers more high-end features than anything in its price range. Don't just move up in class. Get ahead in a Greyhawk.





GREYHAWK 31FK | MIDNIGHT



GREYHAWK 31FK | MIDNIGHT



GREYHAWK 31FS | WALNUT



GREYHAWK 31FK | MIDNIGHT

LUXURY STARTS WITH ATTENTION TO DETAIL

A. GREYHAWK'S WELL-APPOINTED CAB

Maneuver the roads in comfort thanks to an Optima leather driver seat with 6-way power.

B. TRITON 6.8L EFI V-10 305 HP ENGINE

Greyhawk combines the robust Triton engine with a Ford E-450 chassis for ultimate handling.

C. SELECT-MODEL BUNK BEDS

There's room to sleep the family thanks to standard bunk beds in the 31FS model.

D. MEGA STORAGE

Lockable exterior storage with door pulls provide easy access to your gear.

E. FIBERGLASS RUNNING BOARDS

High-traffic areas should never be overlooked. Say hello to standard fiberglass running boards.

F. IN-DASH INFOTAINMENT SYSTEM

A 6.5" touch-screen display features back-up views, built-in GPS and entertainment for the road.



B



A



C



D

YOU WANT PEACE OF MIND

That's why we offer our exclusive 2-year Co-Pilot Warranty, the industry's best and most comprehensive warranty program.



TO LEARN MORE ABOUT OUR QUALITY CONTROL TESTING, SCAN HERE WITH YOUR SMARTPHONE.



WITH YOUR PURCHASE

Every Jayco RV undergoes rigorous quality control testing before it leaves the factory, so you can be confident your new Jayco will continue to provide the ultimate in reliability for years to come.

For a copy of our 2-year Co-Pilot limited warranty with full terms and conditions, ask your local Jayco dealer.



JAYCO CONSTRUCTION

At Jayco, we've built a reputation for superior construction and craftsmanship. We always use top-quality materials and innovative manufacturing techniques—down to the smallest details. The result? Unmatched resale value and peace of mind in an RV that's built to handle whatever the road throws at it, while outlasting everything but your memories.



OLD WORLD CRAFTSMANSHIP

Jayco's dedicated production team includes Amish craftsmen who build with well-honed woodworking techniques passed down for generations.

ecoadvantage™

www.jayco.com/ecoadvantage



THE JAYCO ECOADVANTAGE IS OUR COMPANY'S COMMITMENT TO PROTECTING THE ENVIRONMENT. Scan this QR code with your smartphone to watch a video about our efforts and the impact we're having on our world.



WALL CONSTRUCTION

- 1 Vacuum-bonded layers:** Involves 15-18 minutes of 144 tons of pressure to ensure a stronger bond
- 2 High-gloss, gel-coated HG 4000 fiberglass exterior and standard Diamond Shield paint protection:** Withstands use, travel and UV rays while creating a stunning package
- 3 Seamless front cap:** Increases aerodynamics, while cap adds durability and leak protection where it's needed most

FLOOR CONSTRUCTION

- 4 Vacuum-bonded layers:** Backed by computer monitoring and constant quality control checks, Jayco prides itself on building a solid foundation
- 5 Welded aluminum frame:** Lighter than wood, increases Greyhawk's maneuverability
- 6 Structurwood floors:** Creates one of the industry's strongest foundations

ROOF CONSTRUCTION

- 7 Vacuum-bonded layers:** Laminates materials together using more pressure than typical pinch-roll process
- 8 Bead-foam insulation (R-15) and padded ceiling:** Maintains interior temperatures, absorbs sounds
- 9 1/4" plywood decking on 5" arched welded aluminum trusses:** More moisture resistant, plywood holds up to the elements
- 10 Seamless fiberglass shield:** Features one-piece construction, ensuring better leak protection

PERFORMANCE

- 11 Ford E-450 chassis and Triton 6.8L V-10 305 HP engine:** Features 19,500 lbs. GCWR with up to 5,000 lbs. of towing capacity
- 12 MOR/ryde frame:** Extends chassis for optimal weight distribution and features one-piece, laser-shear construction for a tight-fit design
- 13 Rubber body mounts with Hellwig helper springs:** Reduces vibration

STANDARDS AND OPTIONS

STANDARD EXTERIOR EQUIPMENT

TuffShell vacuum-bonded 5" crowned laminated roof
 TuffShell vacuum-bonded laminated floor and sidewalls
 Front molded seamless fiberglass cap
 Seamless one-piece rubber roof
 Unitized, 1-1/2" laminated floor construction with undercoating
 FRP Lamilux 4000 smooth fiberglass sidewall exteriors
 Diamond Shield paint protection film
 Welded tubular-aluminum sidewall framework
 Fiberglass wings and running boards
 Bead-foam insulation (R-15 max roof, R-8 max floor, R-7 max walls)
 80" tall fiberglass, radius-cornered entrance and screen door
 Keyless entry door, touchpad lock system
 Electric-powered, double-entrance step
 Heavy-duty, entry-door grab handle
 Patio light with inside switch
 Tinted safety-glass windows
 High-output, marine-grade exterior speakers (2)
 Wheel liners
 12V electric awning with adjustable pitch
 Onan 4,000-watt MicroQuiet generator with auto-changeover
 Lockable, one-piece polyethylene exterior storage compartment with door pulls
 Pass-through storage compartment with slam latches and light (select models)
 Slideout battery tray
 56-lb. chassis-mounted propane gas tank
 12V electrical system with 120V, 60-amp power converter
 30-amp power cord
 Outside shower
 12V demand water pump
 Water heater bypass system
 Heated holding tanks, 12V pads
 Black holding tank sprayer
 Roof ladder

STANDARD INTERIOR EQUIPMENT

84" ceiling height with padded ceiling vinyl
 Washington Glazed cabinetry with raised-panel doors and deluxe hidden hinges
 Screwed-stile cabinetry construction
 Overhead cabinet with LCD HDTV (select models)
 Ball bearing drawer guides, 75-lb. capacity with full-drawer extension
 3-burner range with 9,000-BTU SuperBurner and piezo igniter
 8-cu. ft. flush-mount refrigerator with double doors
 Microwave oven with carousel
 Oversized oven
 One-piece J-Stone solid-surface, high-gloss countertop with integrated deep bowl sinks with covers (2)
 High-rise, single-lever faucet with pull-out sprayer
 Water purification system
 Dream Dinette mechanism, raises and lowers dinette tabletop
 High-intensity halogen recessed 12V lighting package
 26" digital LCD HDTV (31SS, 31FK)
 32" digital LCD HDTV (26DS, 29KS, 31DS, 31FS)
 Cable TV hookup with RG6 coax
 Crank-up digital antenna with signal booster
 Fabric-covered box valances with lambrequin legs
 Residential furniture, designed and made by Jayco
 J-Steel sofa
 Trackless carpeting with padding
 Diamondflor vinyl kitchen flooring
 Lap safety belts on all living area seats
 Interior Command Center
 15,000-BTU ducted A/C
 Auto-ignition furnace with wall thermostat
 Satellite dish prep for roof and sidewall
 Marine toilet with foot flush
 ABS shower with one-piece surround
 Queen-sized bed with Cloud Ten pillowtop mattress
 Under-bed storage, bed lifts easily on gas struts (select models)
 Large wardrobes

STANDARD CAB EQUIPMENT

Remote keyless entry
 3-point lap and shoulder safety belts (driver and passenger)
 Auxiliary start switch
 Power Optima leather driver seat
 Upgraded seats with full front/back adjustment in Optima leather
 Driver and passenger air bags
 Padded fabric headliner
 Privacy curtains for cab area
 Padded wings behind cab

STANDARD CHASSIS EQUIPMENT

Triton 6.8L EFI V-10 305 HP engine
 5-speed automatic TorqShift series transmission with overdrive
 55-gal. fuel tank
 130-amp alternator
 5,000-lb. hitch with 7-pin plug
 Power anti-lock brakes with power steering
 A/C and cruise control from factory
 Hellwig helper springs with rubber insulation body mounts

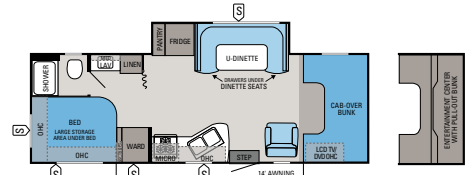
CUSTOMER VALUE PACKAGE

Portable, outside gas grill
 Deluxe, remote-control, heated, side-view mirrors
 Back-up and side-view cameras/monitor
 Clarion infotainment system with in-dash, touch-screen radio with 6.5" LCD color display, DVD/USB, Sirius satellite prep, Bluetooth and built-in GPS
 22" LCD TV in bedroom
 400-watt inverter
 Tankless water heater

OPTIONS

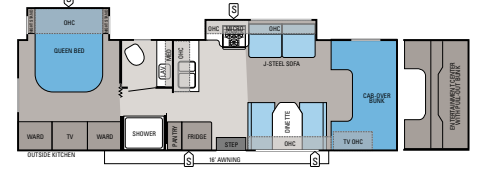
Customer Value Package
 Premium Paint Package: Amber Stone
 Aluminum rims
 Hydraulic auto leveling jacks
 15,000-BTU A/C with heat pump
 Front entertainment center with 32" LCD HDTV
 Bunk CD/DVD players (2) (31FS)

FLOORPLANS



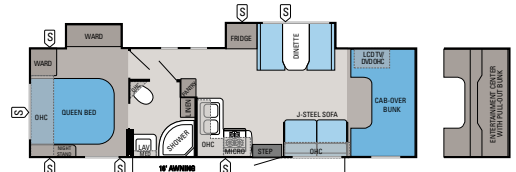
GREYHAWK | 26DS

Ext. Length: 28' 9" Exterior Height: 139" Sleeps: 4-5



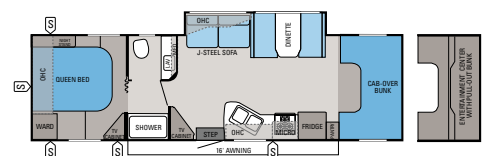
GREYHAWK | 29KS

Ext. Length: 31' 6" Exterior Height: 139" Sleeps: 4-5



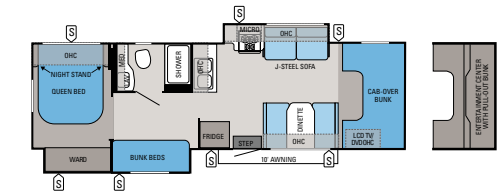
GREYHAWK | 31DS

Ext. Length: 32' 5" Exterior Height: 139" Sleeps: 5-7



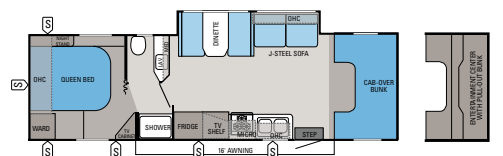
GREYHAWK | 31FK

Ext. Length: 32' 5" Exterior Height: 139" Sleeps: 5-7



GREYHAWK | 31F1K

Ext. Length: 32' 5" Exterior Height: 139" Sleeps: 7-9



GREYHAWK | 31S1S

Ext. Length: 31' 11" Exterior Height: 139" Sleeps: 5-7

EXTERIOR PAINT CHOICES



STANDARD PAINT PACKAGE



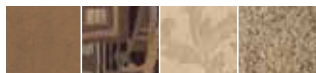
AMBER STONE PREMIUM PAINT (OPTIONAL)

INTERIOR DÉCOR CHOICES

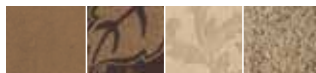
MIDNIGHT



WALNUT



NUTMEG



WOOD



SPECIFICATIONS

FLOORPLAN	EXT. LENGTH	EXT. WIDTH	EXT. HEIGHT (WITH A/C)	INT. HEIGHT	GROSS VEHICLE WEIGHT RATING (LBS.)	GROSS COMBINED WEIGHT RATING (LBS.)	ENGINE/SIZE	WHEEL BASE	FURNACE AUTO-IGNITION (BTUS)	FRESH WATER CAPACITY (INCLUDES WATER HEATER) (GALS.)	GRAY WASTE WATER CAPACITY (GALS.)	BLACK WASTE WATER CAPACITY (GALS.)
26DS	28' 9"	100"	139"	84"	14,500	19,500	6.8L TRITON EFI V10	181"	31M	32.75	40	32
29KS	31' 6"	100"	139"	84"	14,500	19,500	6.8L TRITON EFI V10	212"	31M	32.75	40	32
31DS	32' 5"	100"	139"	84"	14,500	19,500	6.8L TRITON EFI V10	223"	31M	32.75	40	31
31FK	32' 5"	100"	139"	84"	14,500	19,500	6.8L TRITON EFI V10	223"	31M	32.75	40	32
31FS	32' 5"	100"	139"	84"	14,500	19,500	6.8L TRITON EFI V10	223"	31M	32.75	40	32
31SS	31' 11"	100"	139"	84"	14,500	19,500	6.8L TRITON EFI V10	218"	31M	32.75	40	32



THE **Jayco**[®] family STORY

THE JAYCO STORY BEGAN IN 1968 WITH OUR FAMILY—THE BONTRAGERS. Lloyd Bontrager created an innovative, easy-to-use lifter system that led to a better fold-down camper. Loaded with more conveniences, he believed his camper would bring families closer together.

Since then, the Jayco family has grown. From our factory to our front office, from our salespeople to our suppliers, our family bond is four decades strong with the support of more than 300 Jayco dealers.

Together, we're helping make new family stories. **YOUR FAMILY STORY.**

welcome to the Jayco family



Coach-Net
RV Technical & Roadside Assistance

Travel worry-free with Jayco's Customer First Roadside Assistance program, yours at no cost during your first year of ownership. This program is offered through Coach-Net, the largest RV emergency road service in the country, and gives you immediate access to dependable roadside assistance and support services with a simple phone call.

Establishing a solid relationship with your local Jayco dealer is a key component in the enjoyment of your new Jayco. By purchasing from a local dealer, you will have a convenient location for sales, parts and service support. We hope you enjoy working with them as much as we do.



Jayco proudly sponsors Tread Lightly!, a nonprofit organization whose mission is to empower generations to enjoy the outdoors responsibly through education and restoration.

JayPlus

From RV insurance to extended warranties, JayPlus has it covered. Ask your Jayco dealer about our exclusive JayPlus program today.




As a Jayco owner, you can be part of the Jayco Jafari International Travel Club. Ask your dealer about the Jafari "flight" in your area, write Jayco or visit our website.

Gross Vehicle Weight Rating (GVWR): The maximum permissible weight of the motorhome, including the Unloaded Vehicle Weight (UUV) plus passengers, personal items, all cargo, fluids, options and dealer-installed accessories. The GVWR is equal to or greater than the sum of the UUV and the Cargo Carrying Capacity.

Gross Combined Weight Rating (GCWR): The maximum allowable combined weight of the motorhome used as a tow vehicle and the attached towed vehicle.

It is important for your safety and enjoyment that you are aware of the weights and tow ratings of the RV you select. Consult a competent advisor for questions or advice. Whether you are new to RVing or a veteran, get a feel for the performance of

your RV before heading out on the roadways. When you tow a vehicle with your RV, you must drive differently than when you drive a single vehicle. Practice hooking up, driving, backing up and braking in a safe environment or seek out professional instruction. Jayco affixes a weight label to each RV which lists weight information for that vehicle. Refer to that label to verify the vehicle will meet your requirements. See specifications chart inside.

Jayco, Inc., P.O. Box 460, Middlebury, IN 46540, www.jayco.com 

See dealer for further information and prices. All information in this brochure is the latest available at the time of publication approval. Jayco reserves the right to make changes and to discontinue models without notice or obligation. Photos in this brochure may show optional equipment and props for photography purposes. RVs built for sale in Canada may differ to conform to Canadian codes. ©2012 Jayco, Inc. 13-GREY-PL 1012-20K Printed in U.S.A.