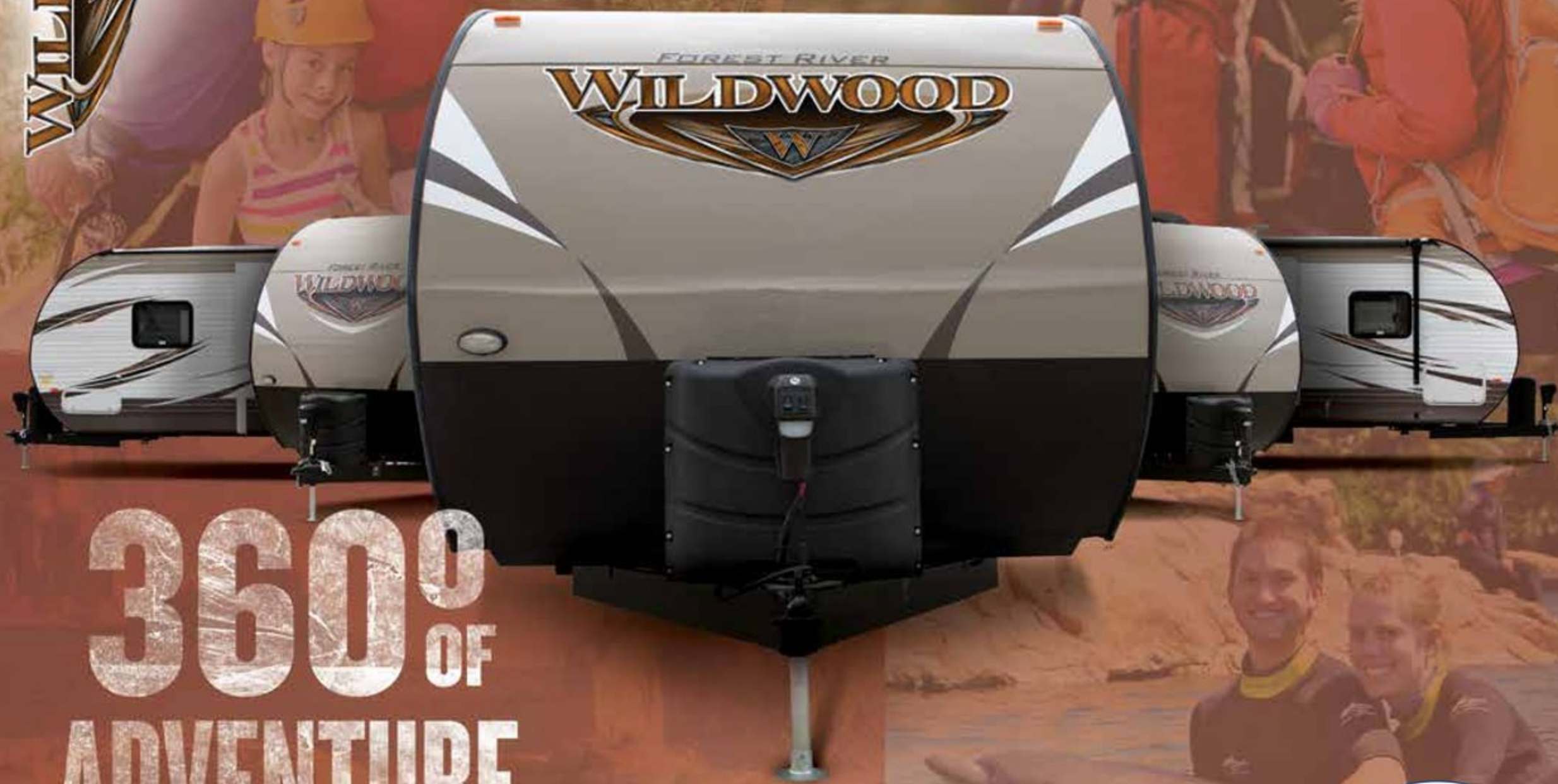


**WILDWOOD**



**360° OF  
ADVENTURE**







1/2 Barrel Hidden Storage. Wildwood products are designed with a focus on storage.



AN ELEGANT BUNK MODEL

WILDWOOD  
**T28DBUD**

SHOWN IN TIFFANY LEATHER DÉCOR

**5,847 LB.**

Shown with Standard Beauflor®  
Plank Wood Linoleum & Optional TV

## Discover the best buy

### MORE FOR YOUR DOLLAR

The 28DBUD and all the Wildwood models offer more for the dollar spent. With phenomenal market share growth over the last 6 years the Wildwood has become the value buyers choice. The beautiful interiors are one reason. Wildwoods look like an RV costing \$5,000 or \$10,000 dollars more. The kitchen countertop, slide-out treatments, cabinet storage, window appointments, wood grain linoleum, bedspreads, shower curtains, and the finishes on appliances, cabinets and hardware, are major elements to our success. See for yourself. Compare and make the wise and obvious choice to own a Wildwood RV by Forest River, Inc.

- 1 Wildwood master bedroom includes solid doors (not drapes), which are excellent for privacy, and give access to the entertainment center TV. (Most models)
- 2 This shows one of the popular locations for a bedroom TV on the 28DBUD and other models.
- 3 An extra large 20" x 30" compartment door is standard on most Wildwood products (Per floorplan)
- 4 Shown are the 2 rear double beds in a 28DBUD model Wildwood



Access door for the laundry chute







OPEN LIVING, RECLINERS INCLUDED

WILDWOOD

# T27RKSS

SHOWN IN TIFFANY LEATHER DÉCOR

**6,355 LB.**

*Shown with Standard Beauflor®  
Plank Wood Linoleum*



# We never cut corners.

## COMMITTED TO QUALITY

Wildwood doesn't skimp on windows, drawers, solid interior doors, cabinets or other features. We are committed to manufacturing quality built products.

- 1 Full extension ball bearing drawer guides with cabinet-grade plywood drawer slides
- 2 One or two recliners are standard equipment on all one bedroom (non-bunk) units.
- 3 This attractive shower is included on all one bedroom (non-bunk) units.
- 4 "Double Deep" kitchen overhead cabinets provide a kitchen with the best storage space in the business.
- 5 We have added a new high quality vinyl coated back splash in the kitchen that is wonderfully wrinkle-free and heat-resistant.
- 6 LED lighting is a popular standard feature.
- 7 Recent redesigns have brought more space into the bedroom at the foot of the bed. Our customers love it!









WIDE OPEN LIVING ROOM

WILDWOOD  
**T26TBSS**

SHOWN IN TIFFANY LEATHER DÉCOR

**5,780 LB.**

*Shown with Standard Beauflor®  
Plank Wood Linoleum & Optional TV*

# Personal & Perfect.

## COMMITTED TO QUALITY

- 1 Wildwood clearly has larger bedrooms than the competition, which gives plenty of walk-around space around the bed with ample room to change clothes or tie your shoes. Wildwood master bedrooms include a laundry storage feature, and an ideal TV location with cable hookup.
- 2 The attractive Wildwood entertainment center includes a flip around TV mount for display in the living room and master bedroom. This central display enhances TV viewing in both rooms. Included are 2 entrances to the master bedroom with solid sliding doors for privacy.
- 3 All Wildwoods feature the standard multi-directional Winegard Sensor antennas, allowing you to watch channels broadcast up to 55 miles away.
- 4 Slip-resistant Beauflor® plank wood look linoleum is a safe, beautiful flooring which will last for years to come.
- 5 Extra large pot and pan drawer at the dinette base. This, together with the extra deep overhead cabinets in the kitchen, provide the consumer the best storage by far in the industry, and this separates us from the competition. Giant-sized drawer under the standard sofa provides 4.8 cubic feet of storage!



5





THE ULTIMATE BIG FAMILY CAMPER

WILDWOOD

# T30KQBSS

SHOWN IN ONYX DÉCOR

**6,884 LB.**

*Shown with Standard Beauflor®  
Plank Wood Linoleum*



# Big in size or big in heart, we have room for you.

## COMFORT FOR EVERYONE.

Large families can really appreciate the value of camping in the 30KQBSS with the huge u-shaped dinette, lots of beds and tons of storage. This model is loaded with practical, value-added features which makes enjoying your camping trip easy.

Towable Comfort for your family. Wildwood provides spacious, convenient floorplans, even when you need light-weight towability for any size family!

**1 Flexible bunk room.** The 30KQBSS has a practical bunk room with flexibility to sleep 3 people. (Dinette makes into a bed.) VERY POPULAR!

**2 The outside kitchen.** The ever-popular outside kitchen provides fireside access to refreshments and a second cooking area outdoors. Ours has a quality metal counter top.

## Excellent Craftsmanship.

Our skilled craftsmen have years of experience building beautifully finished RVs. Forest River, started building RVs in 1996 and today is the number one producer of travel trailers in the world.\* Wildwood has been part of that since the beginning.

\* Independent data provided for January through August 2015 by Statistical Survey's, Inc. Grand Rapids, Michigan.



30KQBSS BATHROOM



1



2



WILDWOOD  
**CONSTRUCTION**



- 1 Radius entry Steps
- 2 2" x 3" floor joists 12" on center
- 3 5/8" 5-ply tongue in groove plywood floor decking
- 4 2" wall studs 16" or less on center
- 5 30" fiberglass radius entry door
- 6 .024 aluminum siding
- 7 5" bowed truss roof rafters
- 8 One piece seamless roof (12 yr. warranty)
- 9 R-7 fiberglass insulation throughout
- 10 Extra large full pass-thru storage w/ 20" x 30" Door (per floorplan)
- 11 Smooth rolled skirting
- 12 In floor ducted heat
- 13 Diamond plate rockguard
- 14 3/8" roof decking (full walk-on roof)
- 15 LP bottle cover w/ easy access
- 16 13.5K ducted roof, high output AC w/ quick cool
- 17 Hitch light & 0.40 aluminum front cap
- 18 Stain resistant carpet
- 19 One piece plank wood look linoleum flooring
- 20 Safety glass windows
- 21 Polystyrene foam insulated A/C duct work
- 22 "Darco" anti-puncture underbelly wrap



**FORM FOLLOWS FUNCTION.**

At Wildwood your satisfaction is serious business and it shows. Our commitment to your satisfaction includes:

- A. Extra large pass-thru storage
- B. Heated and enclosed fresh water tank
- C. Wildwood 5/8" Tongue and groove plywood (top) vs. OSB (below)
- D. 6 gallon Gas/Electric DSI water heater with Quick Recovery
- E. New Centralized Command Center



# STANDARDS & OPTIONS

## CONSTRUCTION & EXTERIOR

- **5/8" tongue & groove plywood floor**
- Full walk on one-piece seamless **SuperFlex®** roof w/ 12 year warranty
- Extra large full pass through storage (per floorplan)
- Cold crack and mildew resistant vinyl patio awning
- Safety glass windows
- **Metal framed 30" smooth radius corner fiberglass main entry door**
- Powder coated I-beam frame
- Cambered chassis
- **Enclosed fresh water tank in a heated compartment**
- 16-gal. per hour **Gas/Electric** quick recovery DSI water heater
- Water heater by-pass
- Nitrogen filled tires
- 2" wall construction, 16" (or less) on center
- R-7 fiberglass insulation throughout
- 13 ply cross micro-laminated beam header above slide out
- **Triple seal slide out system**
- Electric slide out systems (flush floor)
- Swing arm entry assist handle
- Two marine grade exterior speakers
- Electric front jacks (fifth wheels)
- **Fiberglass front cap (fifth wheels)**
- **Aerodynamic front radius**
- **Smooth aluminum front cap**

## KITCHEN

- Dometic® double door refrigerator (2 yr. warranty)
- High rise faucet
- Residential style sink
- Stainless steel finish microwave w/ carousel
- 3-Burner, high output range with oven (2 yr. warranty) Stainless steel finish on door

- Stainless steel finish range hood w/ 12-volt exhaust fan and light
- One piece Beauflor® vinyl flooring
- 27" tall overhead cabinet (kit)
- Wood drawers w/ furniture-grade plywood slides
- Full extension ball bearing drawer guides
- Knife rack (behind cook top)
- **Shelving** in overhead cabinets in kitchen
- Central switch location for command center
- Brushed stainless finish hardware
- Abundant cabinet storage
- **Large pots and pans drawer under dinette**

## LIVING ROOM

- **Recliner or recliners included in one bedroom models**
- 80" interior height in travel trailers (101" interior height in fifth wheel models)
- Ducted 13,500 BTU roof air conditioner w/ quick cool
- **Huge storage drawer under jiffy sofa**
- Booth dinette w/ large storage drawer (most models) (U-shaped dinette, some models)
- Large dinette picture window
- Winegard® antenna with booster
- Standard FM stereo w/ CD/DVD and four cube speakers
- Patio door w/ vertical blinds (36BHBS, 37BHSS2Q, 38RLTS)
- Decorative wall light
- 25K BTU suburban forced air DSI furnace w/ digital thermostat (2 yr. warranty)
- In-floor ducted heat
- Flip TV mount (most models)
- Cable TV hookup living room and bedroom

- **Wall switch controls for ceiling lights at key locations**

## BEDROOM

- Plush comforter and headboard
- **Strut lifted storage area under bed (master bedroom)**
- Bedside mirrored wardrobes w/ shelf above bed
- Bedside 110-volt power outlets (2)
- **Increased space at the foot of the bed (most models)**
- Solid bedroom privacy doors (most models)
- Storage shelf above bed
- Bedside hamper access (most models)

## BATHROOM

- 12-volt power bath roof exhaust vent
- Wooden medicine cabinet w/ mirrored door
- Foot flush toilet
- Tooth brush holder and towel ring
- Vinyl tub surround (neo-angle showers have an enclosure) (select floorplans)
- One-piece slip-resistant Beauflor® vinyl flooring

## SECURITY AND SAFETY

- LED docking lights (fifth wheels)
- LP leak detector
- Smoke detector
- Carbon monoxide detector
- Fire extinguisher
- Hitch light (travel trailers)
- Welded heavy duty safety chains (travel trailers)
- Electric brakes (all wheels)
- GFI receptacles
- ANSI 119.2 certified
- Meets all national highway administration specifications
- RVIA approved product

- Beauflor® vinyl floor with "SafetyGrip"
- Undermount kitchen sink

## WILDWOOD OPTIONS

- Stabilizer jacks [travel trailer (4) or fifth wheel (2)]
- Skylight over tub
- 30-lb LP bottles w/ cover and auto change over (travel trailers)
- 12v power four corner stabilizer jacks
- Power awning with colored LED awning light with remote
- 15,000 BTU ducted air w/ quick cool
- Remote control for slide outs and power awning
- LG solid surface (Particle-board free) kitchen counter tops
- Undermount sink
- Electric front jacks
- LED Interior lights
- Radial tires (Mandatory option)

Contact your Wildwood dealer for a complete list of options.

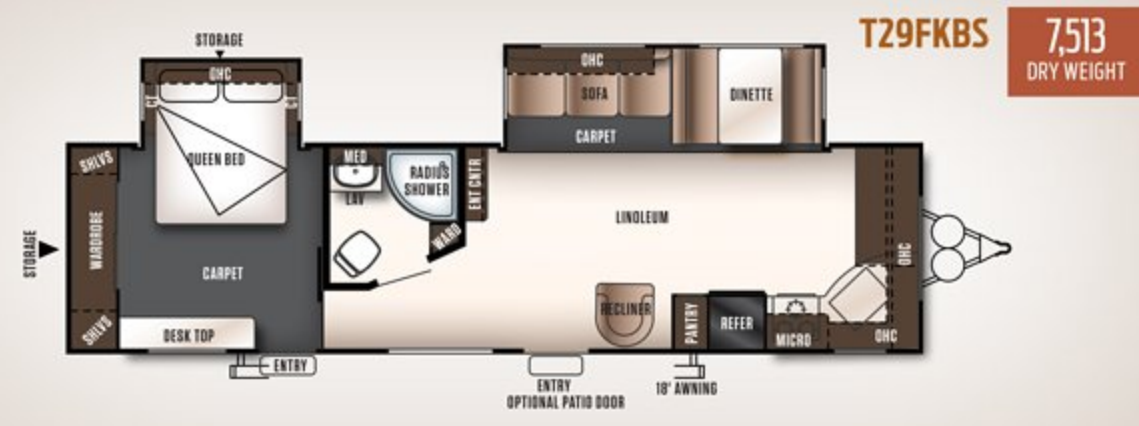
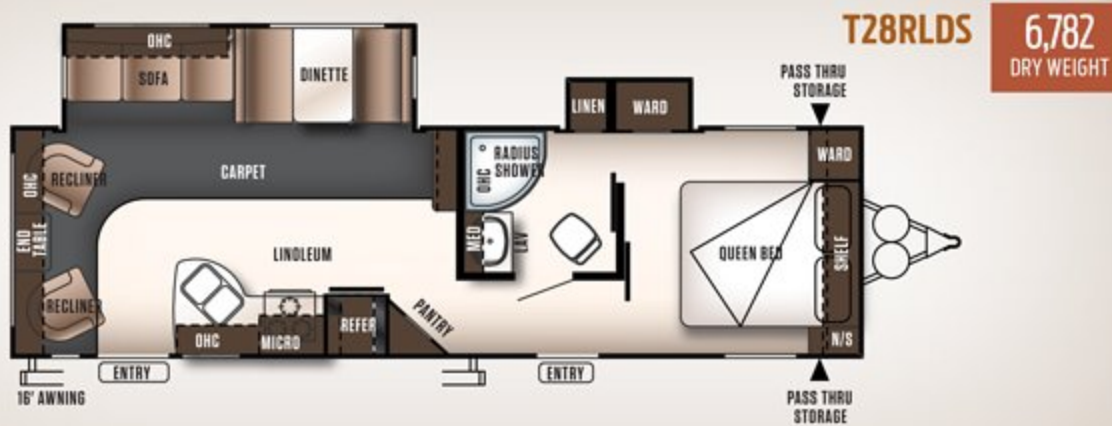
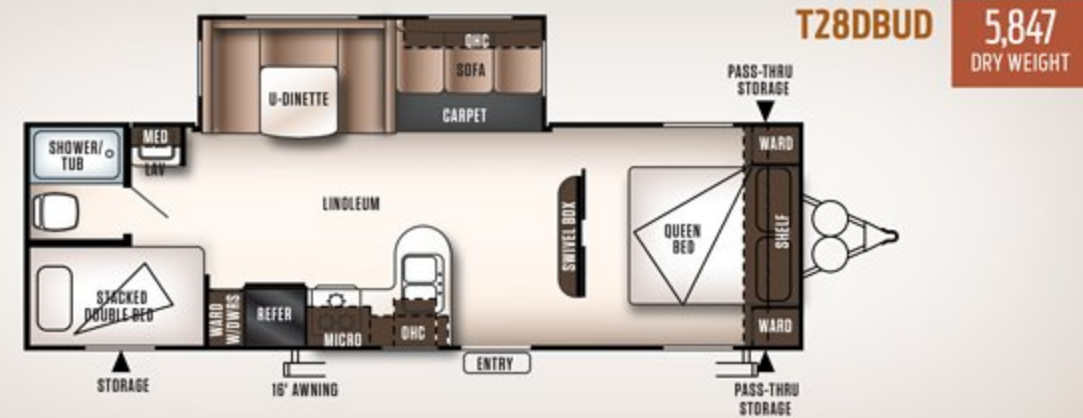
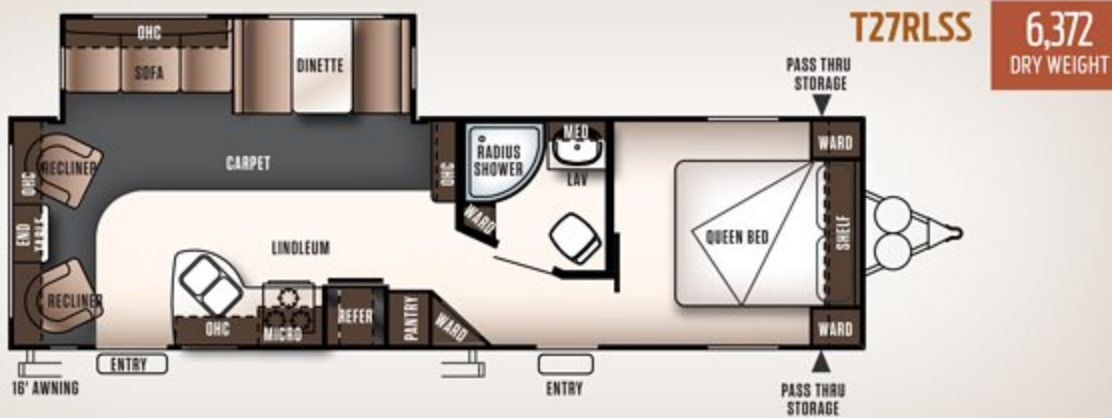
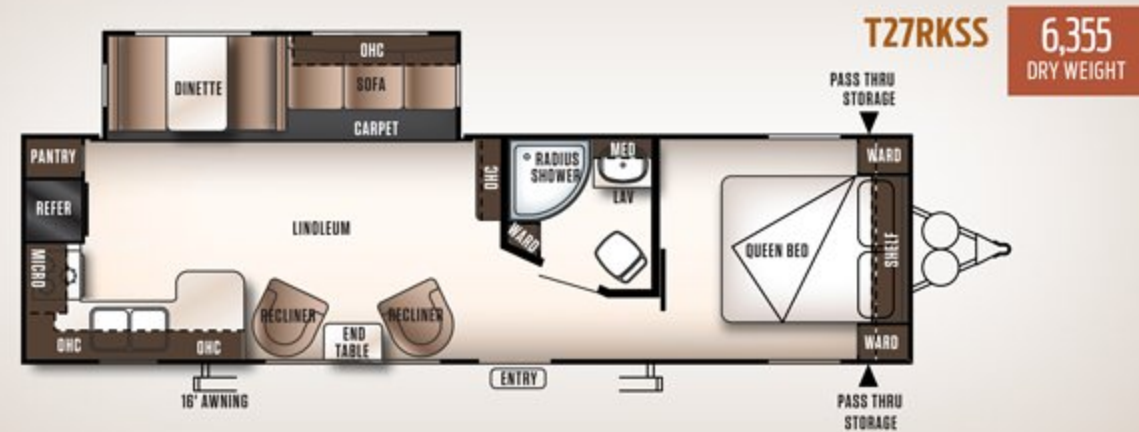
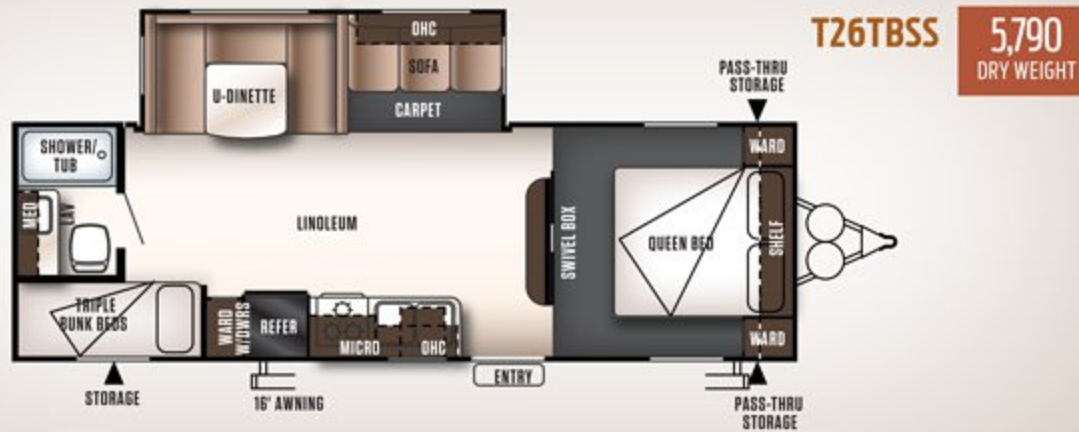


Power awning with colored LED awning light with remote (Opt.)



LG solid surface (Particle-board free) kitchen counter tops with undermount sink (Opt.)

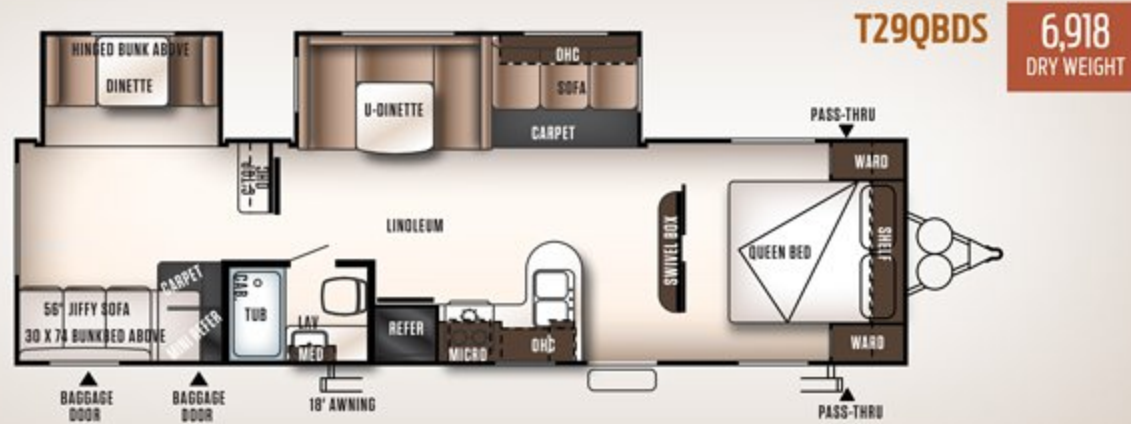




WILDWOOD  
**TRAVEL TRAILERS**

	T26TBSS	T27RLSS	T27RKSS	T28DBUD	T28RLDS	T29FKBS
HITCH WEIGHT (LBS.)	815	650	720	805	882	826
DRY SHIP WEIGHT (LBS.)	5790	6372	6355	5847	6782	7513
CARGO CARRYING CAPACITY (LBS.)	1987	1240	1327	1920	1062	3414
EXTERIOR LENGTH	29' 0"	32' 2"	33' 3"	29' 10"	32' 3"	35' 3"
EXTERIOR HEIGHT	11' 2"	11' 2"	11' 2"	11' 2"	11' 2"	11' 2"
FRESH WATER CAPACITY (GAL.)	40	40	40	40	40	40
BLACK WATER CAPACITY (GAL.)	32	27	27	32	27	30
GREY WATER CAPACITY (GAL.)	34	60	54	35	60	57
AWNING SIZE (FT.)	16'	16'	16'	16'	16'	18'

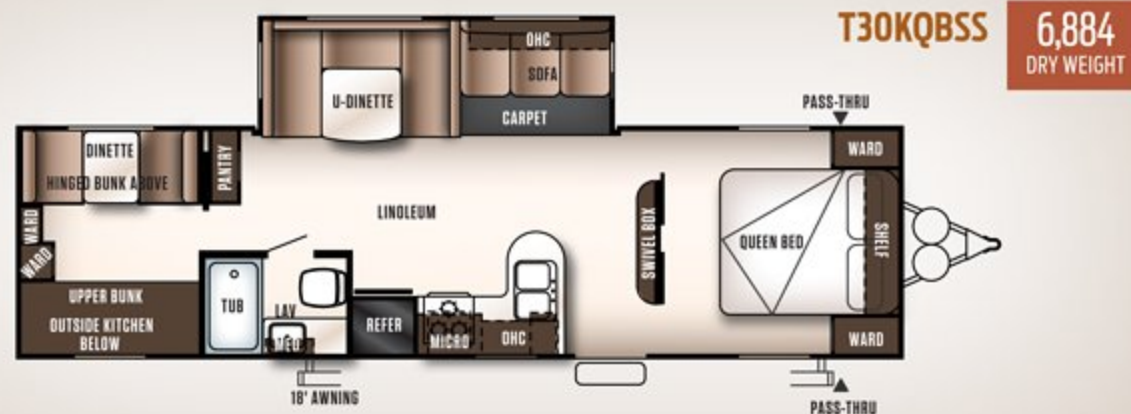




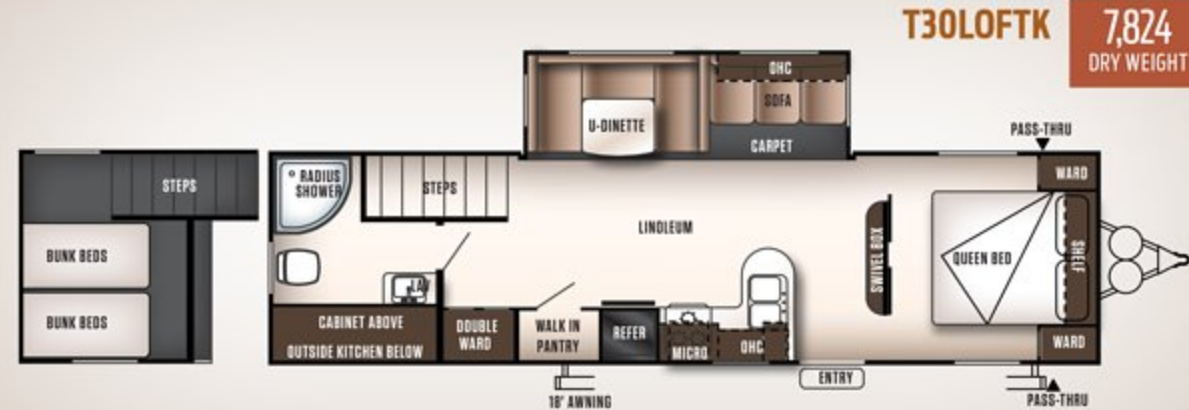
**T29QBDS** 6,918 DRY WEIGHT



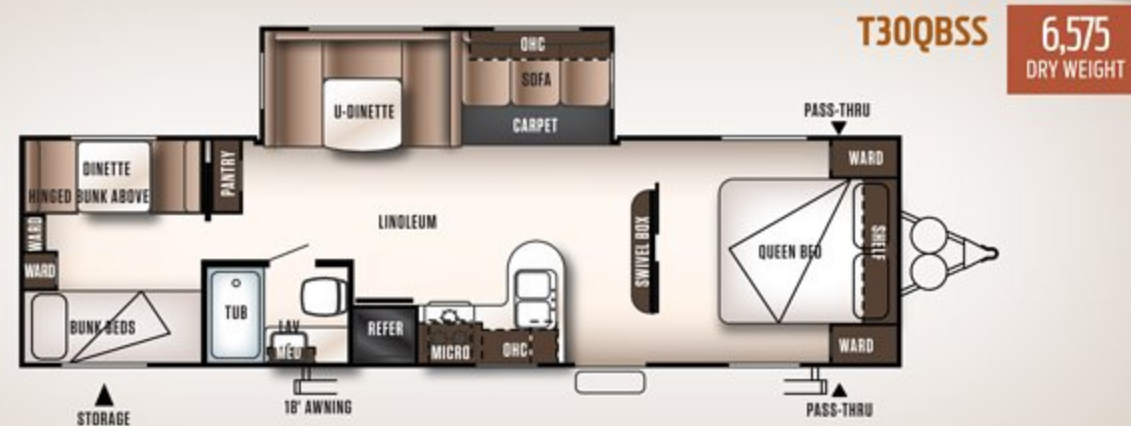
**T29UD3** 7,559 DRY WEIGHT



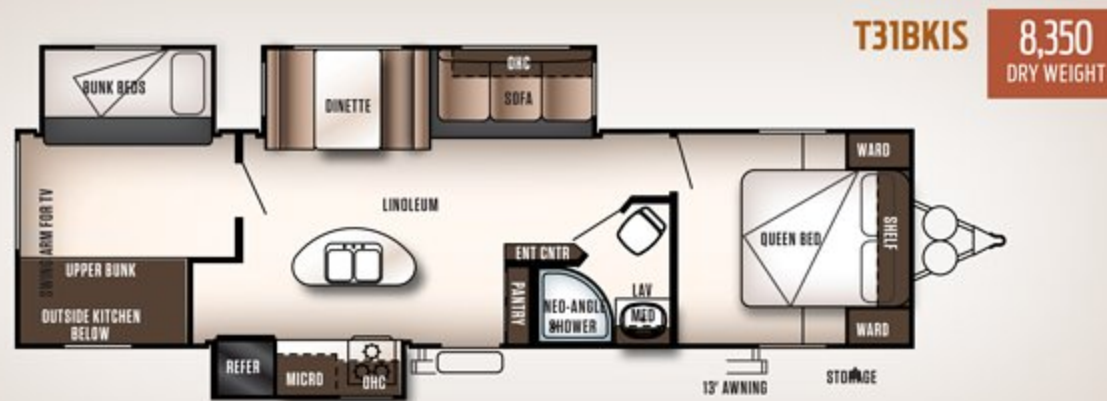
**T30KQBSS** 6,884 DRY WEIGHT



**T30LOFTK** 7,824 DRY WEIGHT



**T30QBSS** 6,575 DRY WEIGHT



**T31BKIS** 8,350 DRY WEIGHT

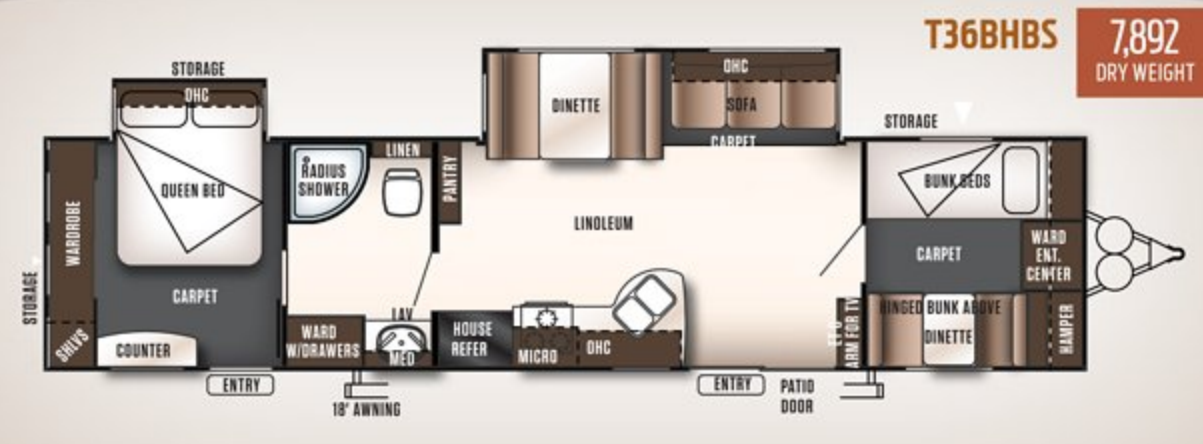
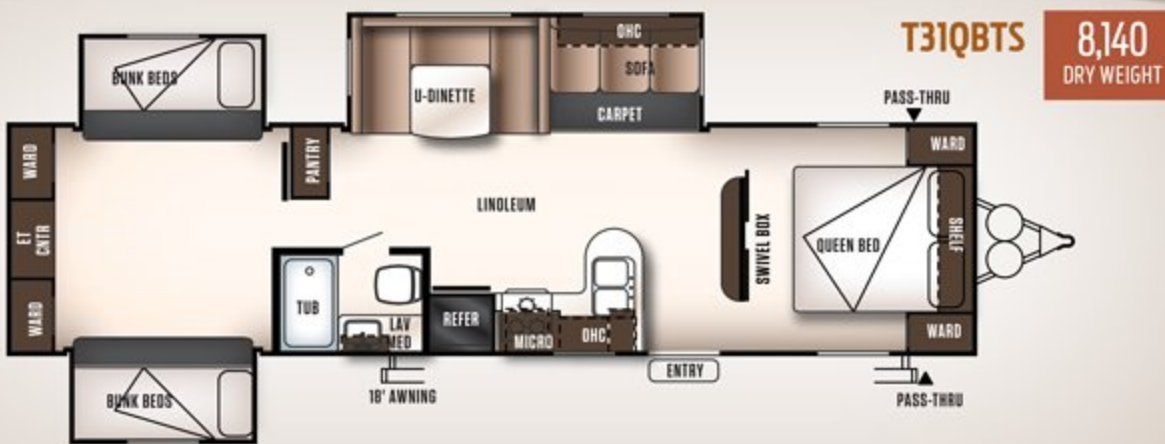
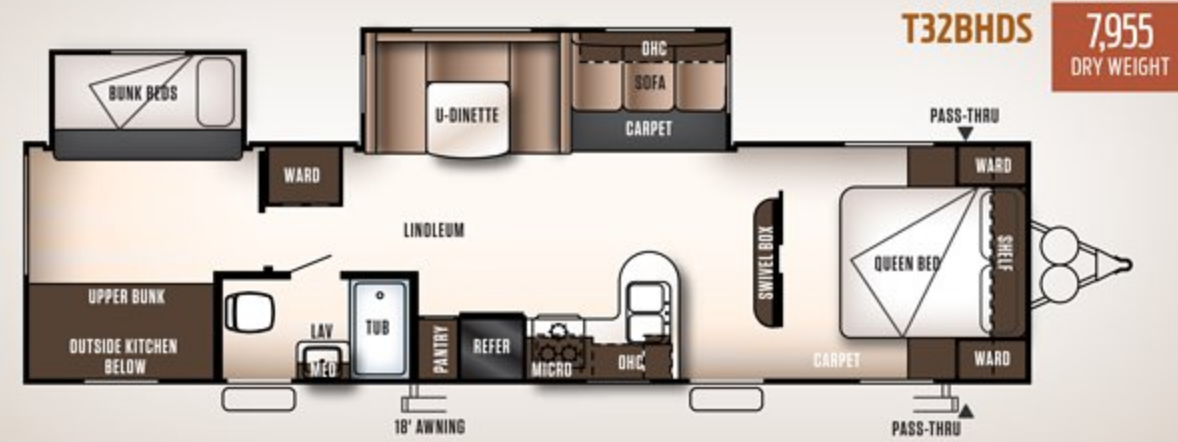
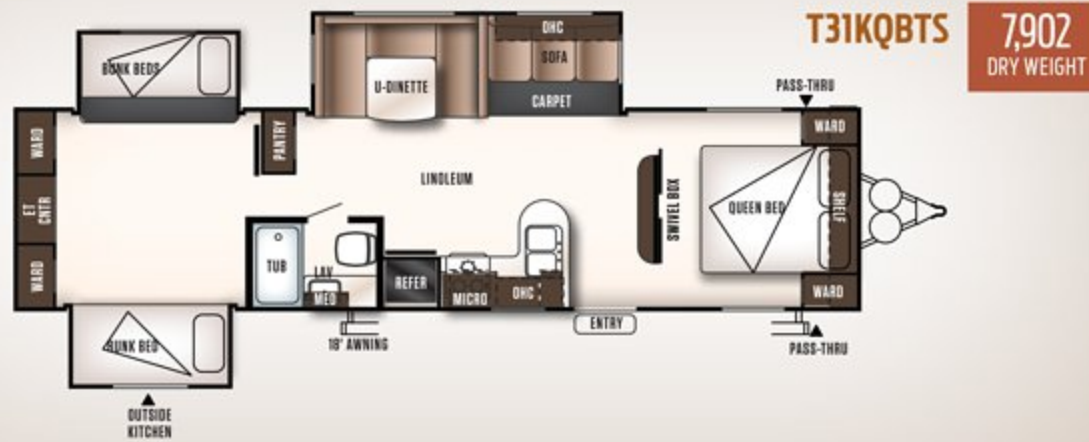
	T29QBDS	T29UD3	T30KQBSS	T30LOFTK	T30QBSS	T31BKIS
HITCH WEIGHT (LBS.)	899	956	899	857	980	970
DRY SHIP WEIGHT (LBS.)	6918	7559	6884	7824	6575	8350
CARGO CARRYING CAPACITY (LBS.)	2722	3519	2756	3134	3146	2742
EXTERIOR LENGTH	34'0"	36'5"	33'0"	34'7"	33'2"	35'8"
EXTERIOR HEIGHT	11'2"	11'2"	11'2"	13'2"	11'2"	11'2"
FRESH WATER CAPACITY (GAL.)	40	40	40	40	40	40
BLACK WATER CAPACITY (GAL.)	27	30	27	27	27	30
GREY WATER CAPACITY (GAL.)	27	54	57	57	27	60
AWNING SIZE (FT.)	18'	18'	18'	18'	18'	13'

WILDWOOD  
**FLOOR PLAN KEY**

*Pillows and blankets shown on beds and bunks are for demonstration purposes only and do not come with your new coach.*

- OHC OVERHEAD CABINET
- WARD WARDROBE
- MICRO MICROWAVE
- LAV BATHROOM SINK

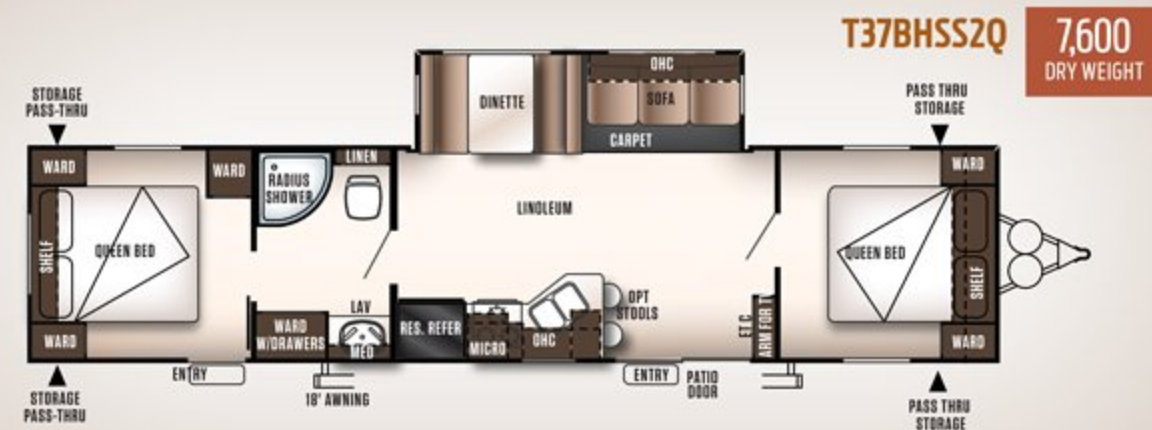




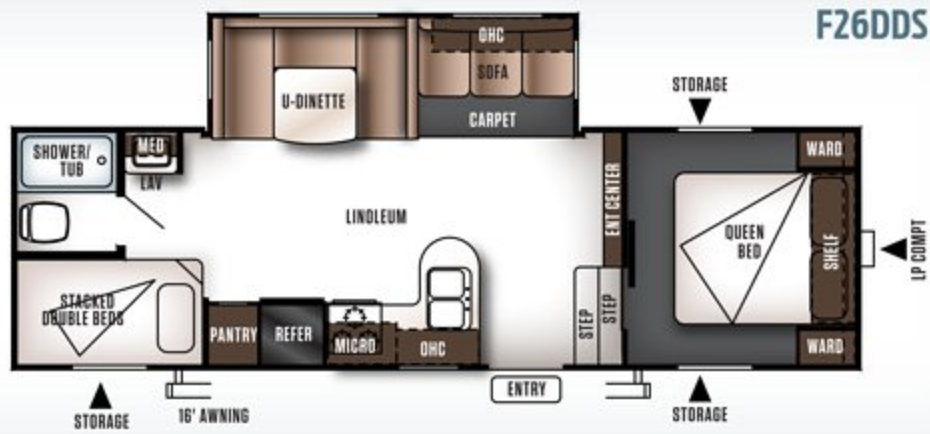
# AMERICA'S CHOICE

Wildwood brand trailers are becoming America's choice for another reason beyond interior appointments. The quality in construction of this unit makes it the wise choice in "Family Affordability." We start with a foundation of 5/8" tongue and groove exterior-grade plywood flooring. This is glued and "ring shank" nailed to 2"x3" floor joists. This glue is so strong many refer to it as a "wood weld." Here is a list of outstanding construction exterior features.

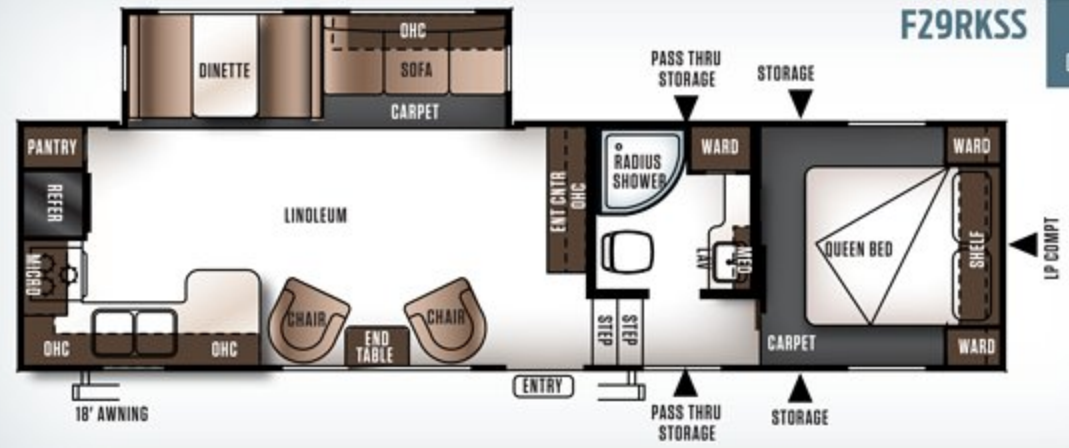
1. Overpowered drive motor for the slideout mechanism
2. One-piece seamless SuperFlex® roof
3. Smooth fiberglass entrance and compartment doors
4. Heated enclosed fresh water tanks. (This makes 3 1/2 season camping possible in your Wildwood Camper.)
5. Triple seal on slideout openings, with maximum duty perimeter strength.
6. Select axles with fully machined spindles, manufactured to exacting tolerances. The best spindle in the business helps your unit to pull arrow straight.
7. Our (CCC) cargo carrying capacities are as good or better than any brand in the business.
8. Towability is maximized, with the right combination of balance, axle placement, weight and aerodynamics.







**F26DDS**  
7,103  
DRY WEIGHT



**F29RKSS**  
7,831  
DRY WEIGHT



**F29RLW**  
7,394  
DRY WEIGHT



**F33BHOK**  
9,107  
DRY WEIGHT

WILDWOOD  
**TRAVEL TRAILERS  
& FIFTH WHEELS**

WILDWOOD  
**FLOOR PLAN KEY**

*Pillows and blankets shown on beds and bunks are for demonstration purposes only and do not come with your new coach.*

- OHC** OVERHEAD CABINET
- WARD** WARDROBE
- MICRO** MICROWAVE
- LAV** BATHROOM SINK
- TRAVEL TRAILER
- FIFTH WHEEL

**TRAVEL TRAILERS**

**FIFTH WHEELS**

	T31KQBSTS	T31QBSTS	T32BHDS	T36HBBS	T37BHSS2Q	T38RLT	F26DDSS	F29RKSS	F29RLW	F33BHOK
HITCH WEIGHT (LBS.)	793	885	859	720	970	1030	1272	1418	1441	1704
DRY SHIP WEIGHT (LBS.)	7902	8140	7955	7892	7600	8588	7103	7831	7394	9107
CARGO CARRYING CAPACITY (LBS.)	3013	2846	3026	2929	3492	2543	2931	3709	4169	2719
EXTERIOR LENGTH	36'1"	35'6"	35'8"	36'7"	36'1"	38'5"	30'9"	34'1"	31' 8"	37'9"
EXTERIOR HEIGHT	11'2"	11'2"	11'2"	11'2"	11'2"	11'2"	12'3"	12'3"	12'3"	12'9"
FRESH WATER CAPACITY (GAL.)	40	40	40	40	40	40	40	40	40	40
BLACK WATER CAPACITY (GAL.)	27	27	30	27	27	40	30	30	27	30
GREY WATER CAPACITY (GAL.)	54	27	57	30	30	40	27	54	27	57
AWNING SIZE (FT.)	18'	18'	18'	18'	18'	15'	16'	18'	18'	16'





### PRE-DELIVERY INSPECTION FACILITY

20,000 square feet of quality assurance. The bare essentials for a premium product. This state-of-the-art facility gives immediate daily feedback to production for quality assurance in every unit built.



Forest River, Inc. encourages our customers to purchase their Forest River products from a local dealership whenever possible for the following reasons:

- 1) Forest River, Inc. dealers are independently owned and operated businesses so priority service and scheduling is at their discretion and is often provided to customers that purchased their unit at that dealership.
- 2) Purchasing locally allows customers to establish meaningful relationships with a dealer, enhancing the RV experience through assistance with product questions, user tips or RV regulations for your state or country, and much more!
- 3) Canadian customers must meet requirements to bring an RV purchased out of the country to their home. These requirements may involve additional inspections and certifications, taxes and fees. Your local Canadian Dealer is a professional at meeting these requirements.
- 4) Scheduling timely warranty repairs and adjustments through a local dealership provides far greater flexibility and convenience to you, the customer!

It is the goal of Forest River, Inc. that all of our RV owners fully enjoy the RV experience and that customer satisfaction meets or exceeds their expectations!

### 24/7 EMERGENCY ROADSIDE ASSISTANCE

For a worry-free ownership experience Forest River includes one

year of Coach-Net RV Technical & Roadside Assistance with each RV purchase. Whether new to the RV lifestyle or an experienced RV enthusiast, Forest River owners have 24/7 access to technical, operational and emergency road service coverage throughout the US & Canada. Coach-Net's fast, dependable service is just a phone call away.

## Coach-Net®

RV Technical & Roadside Assistance

### THE WILDWOOD LINE-UP

## WILDWOOD



## WILDWOOD



## Heritage Glen



WILDWOOD

## DLX

WILDWOOD

## LODGE



Learn More  
Scan this barcode using a QR Reader on your smart phone to learn more about Forest River.



A Berkshire Hathaway company.

FOREST RIVER, INC. 55470 C.R. 1 ELKHART, IN 46515 | (574) 533-5934

WWW.FORESTRIVERINC.COM/WILDWOOD | WWW.FORESTRIVERACCESSORIES.COM

**FREE MEMBERSHIP**  
to Forest River Owners' Group

www.forestriverfrog.com



### Specification Definitions

**GVWR (Gross Vehicle Weight Rating)** - is the maximum permissible weight of the unit when fully loaded. It includes all weights, inclusive of all fluids, cargo, optional equipment and accessories. For safety and product performance do NOT exceed the GVWR.

**GAWR (Gross Axle Weight Rating)** - is the maximum permissible weight, including cargo, fluids, optional equipment and accessories that can be safely supported by a combination of all axles.

**UVW (Unloaded Vehicle Weight)\*** - is the typical weight of the unit as manufactured at the factory. It includes all weight at the unit's axle(s) and tongue or pin and LP Gas. The UVW does not include cargo, fresh potable water, additional optional equipment or dealer installed accessories.

\*Estimated average based on standard build optional equipment.

**CCC (Cargo Carrying Capacity)\*\*** - is the amount of weight available for fresh potable water, cargo, additional optional equipment and accessories. CCC is equal to GVWR minus UVW. Available CCC should accommodate fresh potable water (8.3 lbs per gallon). Before filling the fresh water tank, empty the black and gray tanks to provide for more cargo capacity.

\*\* Estimated average based on standard build optional equipment

Each Forest River RV is weighed at the manufacturing facility prior to shipping. A label identifying the unloaded vehicle weight of the actual unit and the cargo carrying capacity is applied to every Forest River RV prior to leaving our facilities.

The load capacity of your unit is designated by weight, not by volume, so you cannot necessarily use all available space when loading your unit.

All information contained in this brochure is believed to be accurate at the time of publication. However, during the model year, it may be necessary to make revisions and Forest River, Inc., reserves the right to make all such changes without notice, including prices, colors, materials, equipment and specifications as well as the addition of new models and the discontinuance of models shown in this brochure. Therefore, please consult with your Forest River dealer and confirm the existence of any materials, design or specifications that are material to your purchase decision. Litho. U.S.A P/W: 2014.09.17

YOUR WILDWOOD DEALER