

CEDAR CREEK

by Forest River

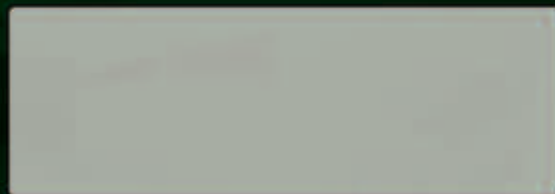


The Smart Choice for the Experienced RV'er
Fifth Wheels by Forest River

Forest River, Inc. / 501 Hawpatch Road / Topeka, IN 46571

Ph: 260-593-2404 / Fax: 260-593-2447

Visit our website at www.forestriverinc.com



CEDAR CREEK



Cedar Creek creates an ambience of luxury living for a truly exceptional travel experience. With all the amenities of a fine home, Cedar Creek abounds in exclusive innovative features you won't find anywhere else.



The 36RLTS kitchen.



The main slide room features a full 6' 7" of headroom.





Optional solid surface counter tops include built-in sink covers.



Optional Dometic® 12 cu. ft. side by side refrigerator.



The 30RKTS kitchen features a large bay view window.

Designed with upscale features, Cedar Creek allows you to travel and live in style without compromising your high standards. The abundant placement of deep cabinets, lazy susans, and large capacity pantries provides generous kitchen storage for a well-stocked kitchen. A choice of kitchen configurations, along with additional options, ensures you'll have the kitchen of your dreams.



Den area of 37RDOS.

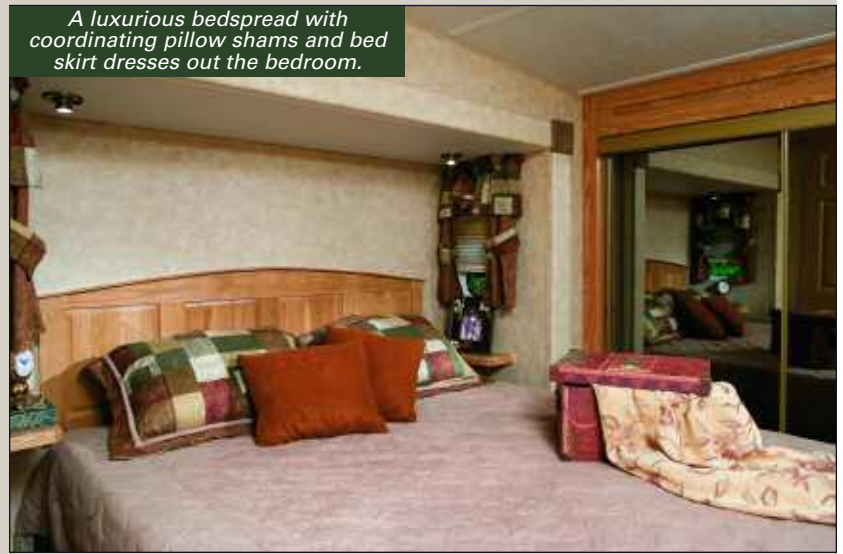


37RDOS shown in Vintage Wood decor.

Optional "Big Boy" freestanding table with table extension and sliding tabletop.



A luxurious bedspread with coordinating pillow shams and bed skirt dresses out the bedroom.



A large mirrored medicine cabinet, optional sculpted lavatory top, and residential style one piece fiberglass shower complete this bath area.



37RDOS pictured with optional La-Z-Boy® recliner.

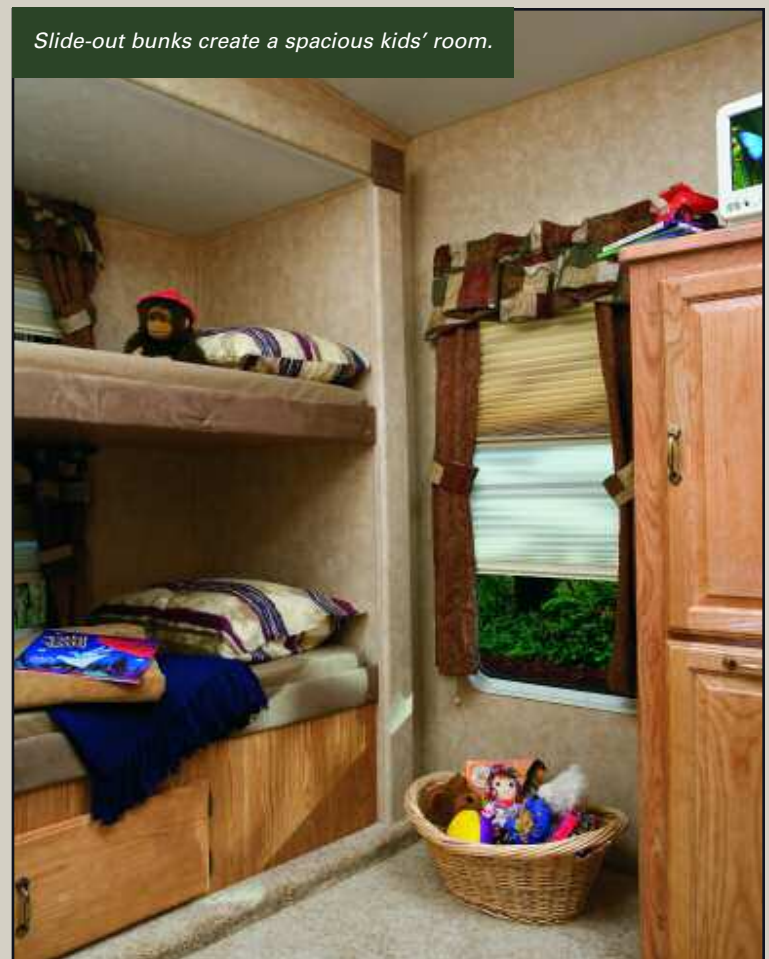
Cedar Creek offers the pinnacle of RV living with exclusive features such as a private den created with exquisite French doors and complete with entertainment center, computer desk, and cozy fireplace. Optional La-Z-Boy® recliners add an even higher level of comfort and quality.



36RLTS shown with entertainment center, fireplace, and computer desk.



Kids' dinette provides a place for table games and crafts.



Slide-out bunks create a spacious kids' room.



The large 60" x 48" dinette area window provides a great view for your dining pleasure.



Optional king size beds are available on all fifth wheels.



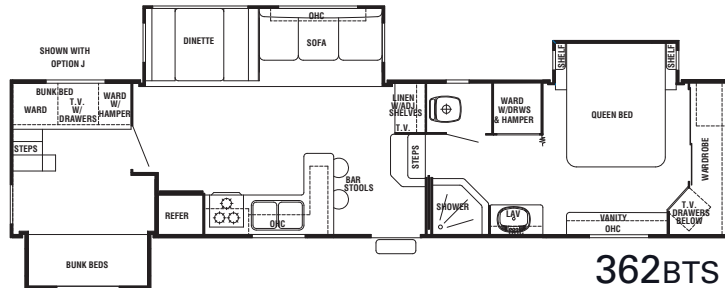
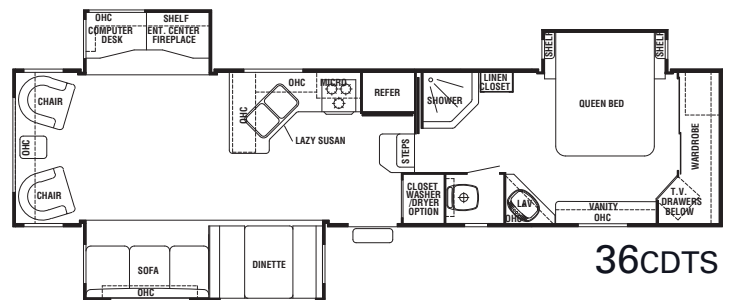
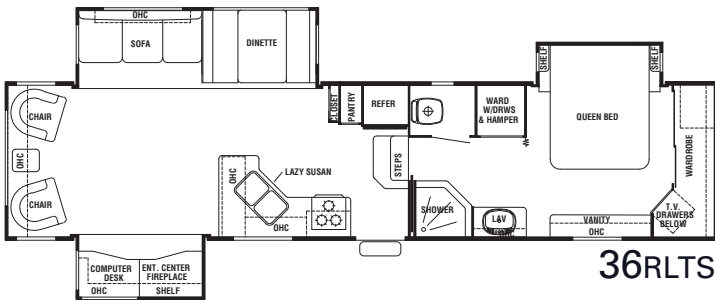
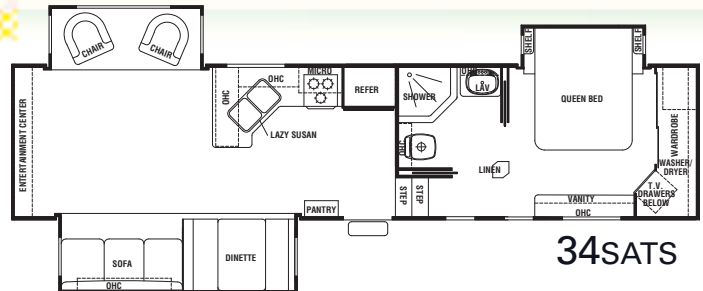
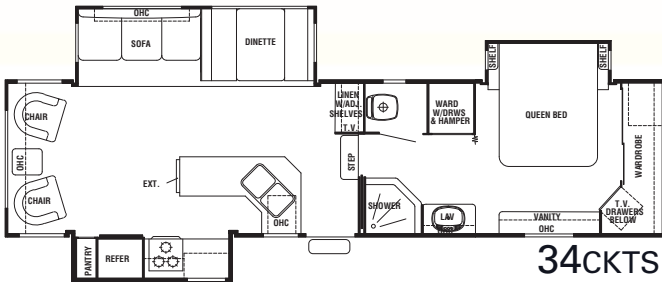
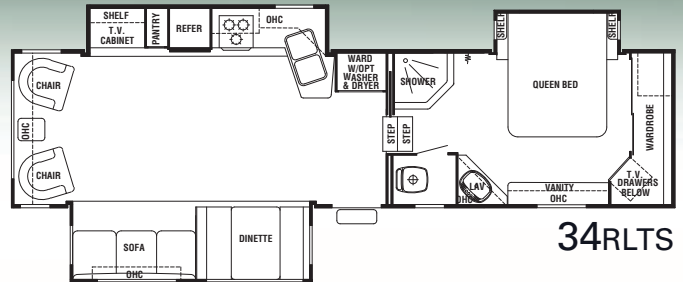
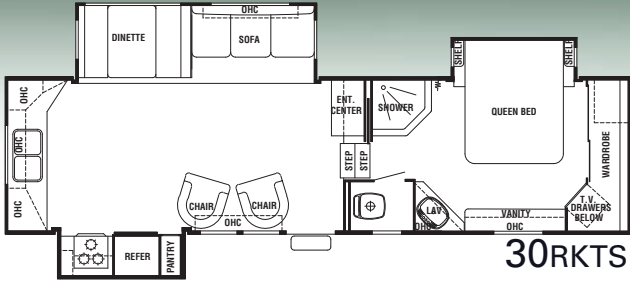
Clean ups are quick and easy with the Dirt Devil® central vacuum system.

A wide variety of floor plans creates an abundance of choices to fit your lifestyle. Bunkroom models come with lots of family friendly features such as bunk slide-outs, a special kid's dinette, and extra storage space. Of course, Cedar Creek is built with only top grade building materials carefully selected to withstand the rigors of family living with long-lasting durability.

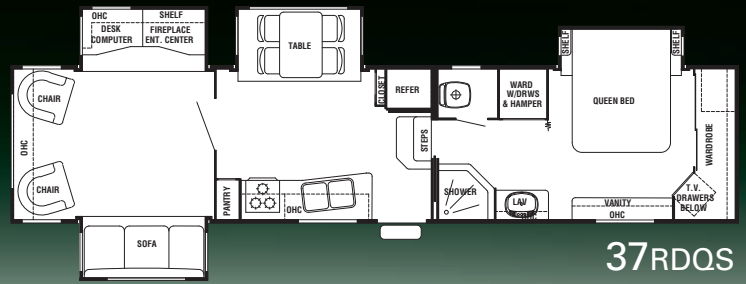
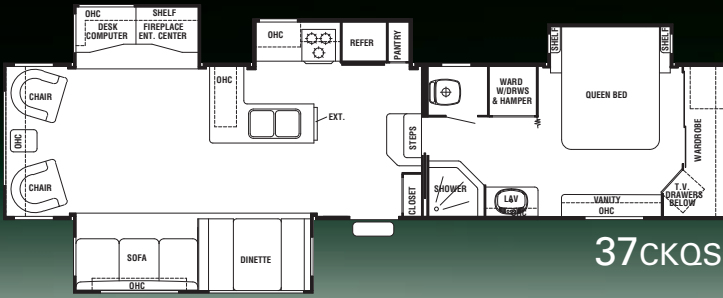
CEDAR CREEK



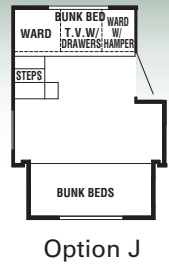
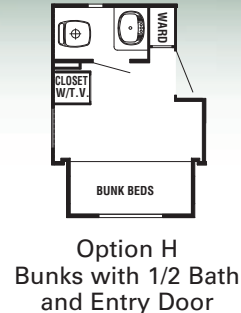
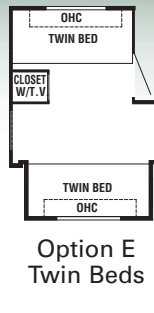
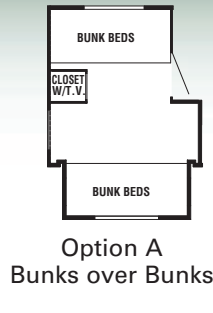
5th Wheel Floor Plans



*King Bed Option Available on all Cedar Creek Fifth Wheels.



Rear Bedroom Options for 362BTS



5th Wheel Specifications

	30RKTS	34RLTS	34CKTS	34SATS	36RLTS	36CDTS
Exterior Length	33'9"	35'7"	35'7"	37'6"	38'	38'
Exterior Height w/Air Conditioner	12'11"	12'11"	12'11"	12'11"	12'11"	12'11"
Exterior Width	96"	96"	96"	96"	96"	96"
Front Bedroom Interior Height	80"	80"	80"	80"	80"	80"
Hitch Weight	1950	1870	1742	1760	1870	1951
Axle Dry Weight	8329	9040	8781	9551	9610	9429
Unloaded Vehicle Weight	10279	10910	10523	11311	11480	11380
GVWR	13950	13870	13742	13760	13870	13951
Gross Cargo Capacity	3671	2960	3219	2449	2390	2571
Dual Axles (2)	6000# Straight	6000# Straight	6000# Straight	6000# Straight	6000# Straight	6000# Straight
Wheel Size	16 x 6	16 x 6	16 x 6	16 x 6	16 x 6	16 x 6
Tire Size	LT235/85R16/E	LT235/85R16/E	LT235/85R16/E	LT235/85R16/E	LT235/85R16/E	LT235/85R16/E
Optional Awning Size	21'	16'	18'	18'	21'	18'
Furnace Size	35 BTU	35 BTU	35 BTU	35BTU	35 BTU	35 BTU
Demand Fresh Water Capacity	64	64	64	64	64	64
Black and Gray Water Capacity	40/40/28	40/40/40	40/40/40	40/40/40	40/40/40	40/40/40
Sleeping Capacity	6	6	6	6	6	6

	362BTS	37CKQS	37RDQS
Exterior Length	38'7"	39'	38'
Exterior Height w/Air Conditioner	12'11"	12'11"	12'11"
Exterior Width	96"	96"	96"
Front Bedroom Interior Height	80"	80"	80"
Hitch Weight	1860	2210	2050
Axle Dry Weight	9950	10600	10210
Unloaded Vehicle Weight	11810	12810	12260
GVWR	13860	15500	15500
Gross Cargo Capacity	2050	2690	3240
Dual Axles (2)	6000# Straight	7000# Straight	7000# Straight
Wheel Size	16 x 6	16 x 8	16 x 8
Tire Size	LT235/85R16/E	LT235/85R16/G	LT235/85R16/G
Optional Awning Size	21'	18'	21'
Furnace Size	35 BTU	42 BTU	42 BTU
Demand Fresh Water Capacity	64	64	64
Black and Gray Water Capacity	40/40/40	40/40/40	40/40/40
Sleeping Capacity	8	6	6

All weights listed are base weights. Weight capacities +/- 5%. NOTE: All fifth wheel lengths include extended pin box and 4" bumper. *Model number of any particular unit does not necessarily reflect the overall length of the unit itself.



Cedar Creek 5th Wheel Standard Features

Exterior

- #30 Gas Bottles with Bottle Cover and Automatic Change Over
- (2) Scare Lights - Door Side and Off Door Side with Separate Wall Switches
- 110V. Outlet in Below Deck Front Storage Area
- 56" x 32" Front Storage Compartment Door
- 12V. Battery Disconnect
- 12V. Ultra-Heat Heating Pads on All Holding and Fresh Water Tanks with Thermostat
- 15,000 BTU Ducted Air Conditioner
- 15,500 LB Rated Extended Pin Box
- 16" Tire Underbelly Carrier
- 12V. Storage Lights in Below Bath Deck and Front Storage Areas
- Cavernous "Z" Frame Storage includes Vinyl Floor Covering, turning your Front Storage Compartment into a Front Storage Shed - No Dirt Grabbing Truck Felt
- 30" Radius Front Entry Door with Dead Bolt Lock and Drip Cap
- 55 AMP Power Converter
- A&E 8500 21' Awnings (Where Applicable)
- Quick and Easy Ultra Lube Axles, 16" Tires, Adjustable Hanger Plates and Four Wheel Electric Breaks
- All Exterior Compartment Doors, Exterior Lights and Corners are Sealed with Butyl Rubber and Silicone - Proven to be the Best Sealant in the Industry - No Putty or Foam Tape
- Aluminum Rear Bumper Cover
- Black Tank Flush
- Break Away Switch
- Cambered 10" I-Beam with Unique "Z" Frame Storage
- Convenient Single Access Phone Jack and Cable TV Connections
- Detachable 30 AMP Power Cord
- Enclosed and Double Layer Insulated Underbelly
- Flush Floor Bath and Bedroom Deck
- Folding White Enamel Assist Handle at Entry Door
- Front Power Electric Jacks with Quick Release Jack Pins
- Hard Heat Duct Boot Leading into Your Front Upper Deck for a More Efficient Delivery of Heat
- Hitch Light
- Large White Framed Dark Tinted Jalousie Clamp Ring Windows with Butyl Rubber Seals for Superior UV and Weather Protection
- Lighted Entry Step
- Lockable Clamp Ring Exterior Baggage Doors with Thumb Grip and Door Catch
- Opaque Jalousie Window in all Toilet Areas
- Artwork Exterior Graphics
- Porch Light
- .040 Radius Wrapped Bottom Metal Skirt

- Rear Leveling Jacks
- Shock Absorbers
- Silver Metallic Clear Coat Wheels
- Single Access Fresh Water Fill and City Water Hook-Up with Lock
- Smooth Operating Big Ezy Radius Entry Steps Specifically Designed Wider for More Secure Footing while Entering and Exiting the Coach
- Taillight Assembly with Back-Up Lights Included
- True Owens Corning® Gelcoat Exterior with Front Fiberglass Cap, Including Entry and Baggage Doors for Uniform Color Retention - No Fiberglass Fiber Lines
- UV Automotive Paint Coating is Placed on all Range and Refrigerator Vents to Prevent Premature Color Changes.
- White Enamel Rear Ladder

Bedroom

- Full 6'8" of Headroom
- Bedroom Roof Vent
- TV Center with 5 - 8" Deep, Drawers in Main Bedroom Area
- Bedroom Slide - 80" Queen Bed with Night Stands, 2 X 2 Finished Bed Base with Gas Lifts, Upgraded Pillow Top Residential Mattress, Side Ventilation Windows, Marvelous Ash Residential Style Headboard, with a Large Storage Area Under the Bed - Optional King Size Bed in all Models- WOW!
- Pillows with Shams in Bedroom Area with a Luxurious Bedspread which Includes Elastic Mattress Grips and Bed Base Bed Skirt
- Smoked Bronze Closet Doors that Conceal a Deep Hanging Storage Area
- Swivel Mount TV Antenna with Power Booster
- Ceiling Mounted, Individually Switched, Overhead Reading Lights

Kitchen

- Pantry with Large Capacity Storage Base (Where Applicable)
- 2" Solid Oak Counter Top Edge
- 10-Gallon Gas/Electric DSI Water Heater
- Armstrong "Tuff-Guard" Vinyl Floor Covering
- New Dometic Americana 8 Cu. Ft Refrigerator with Hardwood 6 Panel Raised Refrigerator Front and Adjustable Thermostat
- Crown Molding Complementing all Overhead Cabinets in Kitchen Area
- 60" X 48" Window in Dinette Area
- Entire Water Filtration System which Includes Tank and City Water - Even Your Shower Water is Filtered
- Full 42" Easy Entry, Double Pedestal Dinette Table with 2" Solid Oak Edging

- Fluorescent Lighting
- Larger 64-Gallon Demand Water System
- Lazy Susan (Where Applicable)
- 30" Over The Range Microwave with Carousel and Built-In Vent
- Peek-A-Boo Waste Container in all Rear Living Rooms
- Durable, Residential Stainless Steel Sink with Full Twin 8" Deep Wells and Includes a High Rise Swivel Spout and Vegetable Sprayer
- Residential Style, Full Extension, Roller Drawer Guides with Travel Locks - No Binding
- Silverware Drawer
- Sink Covers
- Solid Ash Drawer Fronts with Baltic Birch Sides Convenient 5" and 8" Sizes
- Toe Kicks at the Base of the Kitchen Cabinet

Living Room

- (2) Rocker Recliner Gliders or Bar Stools (Where Applicable)
- 27" LCD Flat Screen Television (34SATS only)
- 35" X 9" "SKYVIEW" Side Window in Living Area
- Carbon Monoxide Detector
- Ceiling Fan with Light
- Coordinating Wall Paper Border
- Create-A-Breeze Fantastic Fan with Thermostat and Rain Sensor in the Kitchen
- Day/Night Shades
- Fireplace (36CDTS, 36RLTS, 37CKQS, 37RDQS)
- Fluted Hardwood Main Slide Fascia Supported by Oak Columns and Post Pad at Carpet
- Hide-A-Bed Sofa
- Lambrequin Style Valance with Curtains Throughout Except Bedroom
- LP Detector
- Main Slide-Room Height 6'7"
- Pre-Drilled and Counter Sunk Fastened Cabinetry with Lumber-Core Cabinet Stiles
- Queen Ann Style End Table (Where Available)
- RV 2000 6+2 Surround Sound Stereo System with Built-In Subwoofer and Remote Control
- Smoke Detector
- Solid Ash, Cathedral Style, Overhead Cabinets with Heavy Duty Hinges, Antique Brass Handles and Knobs for a Beautiful Crisp Clean Look - No Laminated or Honeycomb Constructed Doors
- Trackless Plush Pile Carpeting in all Living Room and Bedroom Areas
- TV Cable, Satellite, and Phone Jack in Living Area
- Upgraded Lighting at Sofa and Decorative Overhead Dinette Light
- Wall Clock

Bathroom

- 2" - 10 Blade Bathroom Breeze Power Bath Vent with Convenient Wall Switch
- 3 Tier Bath Towel Rack
- 6 Panel - Embossed Woodgrain Passage Doors with Residential Door Handles
- Large Bathroom Mirror Medicine Cabinet with Overhead Make-Up Lights
- One Piece Molded, Residential Style, Fiberglass Shower with Seat that Won't Deteriorate with Age
- Skylight Over Tub
- Foot Flush Porcelain Toilet
- Wall Switched Ceiling Lights in Key Locations

Just a Few of the Additional Options

- "Quick Draw" Rear Self Leveling Jacks
- 2nd Penguin Air Conditioner for Two Total
- 15 Cu. Ft. Amana® Refrigerator with Inverter, Icemaker, Self-Defrost and Adjustable Thermostat, Backed by Maytag (Icemaker N/A on 34 CKTS, 37CKQS and 30RKTS)
- 12 Cu. Ft. Side by Side Refrigerator
- 30" Amana® Convection Oven/Microwave with 3 Burner Cooktop Backed by Maytag
- 36" Corner Bath Tub with Seat
- 50 AMP Service Only
- 50 AMP Service with Washer/Dryer Prep
- 5500 Onan Marquis Gold LP Generator
- 9000 Series A&E Awning with Metal Cap
- A&E Electric One Touch Electric Awning with Remote
- Awning Center Rafter
- "Big Boy" Free Standing Table with Table Extension, Sliding Table Top and 4 Chairs
- Brace and Wire for 2nd Air Conditioner
- Ceramic Alternative Floor Covering
- Combination Washer/Dryer
- Stackable Washer and Dryer - Wired Individually to Allow Simultaneous Wash and Dry
- Create-A-Breeze Fantastic Fans with Thermostat and Rain Sensor in the Bedroom Area
- Custom Paint Package
- Creekside Lower Body Custom Paint
- Decorative 5 Pillow Package
- Deluxe Aluminum Wheels
- Dirt Devil® Central Vacuum System with Vac Dustpan
- Electric Dump Valves
- Entertainment Package which Includes the Home Theater Dolby Digital Surround Sound Stereo System with CD/DVD Player and Flat Screen Television (20" or 27" Where Applicable)
- Fireplace (Where Applicable)
- Jack-Knife Sofa on 362BTS Only
- 72" x 80" King Size Bed
- La-Z-Boy® Recliners (Beige, Burgundy or Fabric)
- Lightweight Ultra-Leather Recliners with Ottoman
- LP Generator Prep with Carbon Monoxide Detector with 50 AMP Service
- Luxurious Sculpted Solid Surface Style Galley and Lavatory Countertops. Built-In Sink Covers are also Included to Allow for a Continuous Counter Surface
- Message Center with Switch Cover
- Mirrored Bath Door
- Outside Shower
- Rear Gelcoat Cap with Molded Bumper
- 10+2. 5.1 Dolby Digital Surround Sound Stereo System with Built-In Subwoofer and Built-In DVD Player
- Safety Glass
- Selector Switches for Slide Rooms
- Slide Room Awning Toppers
- Sliding Privacy Doors to Bedroom (Only 34CKTS, 362BTS, 36RLTS, 37CKQS, 37RDQS)
- Thermo Pane Windows
- Trailair® Air Ride Hitch Coupler
- Trailair® Center Point Air Ride Suspension
- Trailair® Equa-Flex™ Flexible Equalizer
- Triple Tier Slide-Out Storage Stack

Optional Custom Package

- A Gorgeous Blend of Custom Automotive Paint and Graphics. Choose One of the Pre-Selected Paint Colors Available (Silver Birch, Burgundy, Champagne), or Give Cedar Creek the Paint Code from Your Vehicle and We Can Paint the Unit the Same Color as Your Vehicle for No Extra Charge
- 5 Decorative Residential Style Coordinated Pillows
- Electric Dump Valves
- Hand Laid Ceramic Alternative Flooring
- Luxurious Sculpted Solid Surface Style Galley and Lavatory Countertops. Built-In Sink Covers are also Included to Allow for a Continuous Counter Surface
- Rear "Quick-Draw" Rear Electric Stabilization Jacks
- Upgraded Sealand Porcelain Commode with Handy Sprayer and Hose
- Upgraded One Piece Faucet with Pull Out Sprayer
- Message Center Cover

Cedar Creek Features

- 1 > **Optional DIRT DEVIL®** CV950 central vac cleaning system with VacPan™ automatic dustpan at entry door.
- 2 > Cedar Creek's large front **EXTERIOR STORAGE** compartment includes (2) 12v lights and a 110v outlet. With our unique "Z" frame, our customers can access comfortably all areas, access all water systems, or could add a small refrigerator or freezer. Imagine the possibilities!
- 3 > **Optional TRIPLE TIER STORAGE TOWER** with sliding trays.
- 4 > The bathroom Breeze **FANTASTIC FAN™** is included in all bathroom areas. With the windows open and this fan on, watch how the air flows through the unit, even if there is no outside breeze. Hot air goes out - cool air comes in, all with the flip of a switch.
- 5 > Imagine yourself with this cozy **FIREPLACE**. It's standard in selected models.
- 6 > The 10,000 gallon, 1 micron, **COMPLETE WATER FILTRATION SYSTEM** filters all city and tank fresh water in the unit
- 7 > **Optional TRAILAIR® AIR RIDE PIN BOX** - Lose the jiggles, bumps, chucks and jars with the 5th Wheel Air Ride Pin Box. By adding an air bag at the hitch connection, you, your towing vehicle and the coach enjoy smooth, stable towing performance.
- 8 > **TRAILAIR® EQUA-FLEX™ FLEXIBLE EQUALIZER** - This product is designed to replace the standard cast iron equalizer between the leaf spring suspension. This Equalizer provides a reduction in road shock by 53-60% according to Roush Industries, Inc. (testing completed 4/24/06). Trailair® can't improve the road, but they can improve the ride.



Exterior shown with optional Creekside paint scheme.

Custom Features

- 9 > Entry door switches will be covered by an oak frame cork board style **MESSAGE CENTER**.
- 10 > Residential style coordinated **PILLOWS** add a decorative touch to your bedroom and/or living room.
- 11 > **LUXURIOUS SCULPTED SOLID SURFACE STYLE GALLEY AND LAVATORY COUNTERTOPS**. Built-in sink covers are also included to allow for a continuous counter surface.
- 12 > "Quick Draw" rear electric **LEVELING JACKS** add to the stability of your home away from home.
- 13 > Hand laid **CERAMIC ALTERNATIVE FLOORING** which delivers a high end residential look and feel in the kitchen and bathroom areas.
- 14 > **PORCELAIN COMMODE** with foot flush standard. Custom package includes a sprayer.

Emergency Roadside Assistance Service Administered by Coach-Net®. Ask your dealer for more information.



Custom Package

Choose one of the pre-selected paint colors available (Burgundy, Champagne or Silver Birch) or give Cedar Creek the paint code from your vehicle and we can paint the unit to match for no extra charge.

Cedar Creek and Silverback Integrated Aluminum Cage Construction

State-of-the-art construction techniques along with top grade building components give Cedar Creek its reputation for long-lasting quality.



Side Walls

- Handmade 2 x 2 - 16" (or less) OC Sidewalls with Individually Fastened Custom "L" Brackets Combined with Uniroyal® Silaprene Adhesives for a Strong Flexible Frame without Welding or Lamination. (475 PSI at 2" Per Minute, Marine Grade)
- True Owens Corning™ Performance Plus Gelcoat on all Exteriors - The Best of the Best in Fiberglass
- All Baggage Doors and Entry Doors are Made out of True Owens Corning™ Performance Plus Gelcoat to Prevent Uneven Aging of Your Unit
- Automotive UV Clear Coat Paint, Guaranteed for 7 Years, on all Refrigerator Vents, Microwave Vents, and Entry Door Window Frames, Preventing Early Discoloration
- Sidewalls are Bolted to the Floor with 5/16" x 6-1/2" Carriage Bolts at each Outrigger
- Glued R-7 Fiberglass Insulation Expanded to its Full Capacity within the Sidewall Frame
- Designed by Forest River, a New Unique Slide-Out Seal System for Tighter, Stronger Water Protection - First of its Class - Compare It!
- 5 Direction Insulation in all Slide-Out Rooms

Floors

- 3" Aluminum Frame Floor with In-Floor Heat Ducting and Custom "L" Brackets Combined with Uniroyal® Silaprene Adhesives
- 5/8" Tongue and Groove Plywood, Marine Grade
- Cambered 10" I Beam "Z" Frame with Large Support Outriggers and Full Length Welds
- The Tongue and Groove Plywood Floor is Attached to the Aluminum Frame with Silaprene and Screwed every 5"
- Darco Waterproof Underbelly
- Fully Enclosed 4' x 8' ABS Removable Panels for Easier Access into the Underbelly
- R-14 Fiberglass Insulation Only - Plywood, Vinyl, Carpet, Tank Heaters, Carpet Pad, etc. are not Included within These R Values

Roof

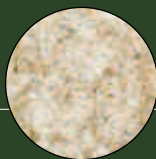
- 1/4" Foam Cor® Insulation Board Weather Barrier (R1 Value)
- Full Length 3/8" Wood Roof Decking for a Full Walk On Roof (Screwed - Not Stapled)
- R-14 (Fiberglass Insulation Only) - Roof Decking, Foam Cor®, and Rubber Membrane are not Included within This R-Value
- 2 x 2 - 16" OC - 4" Truss Roof Frame Combined with Uniroyal® Silaprene
- 2 Ply - Tuff Ply Rubber Roof Membrane with Built-In Fire Retardant
- Full Length Drip Rails with Spouts from the Front to the Rear
- Roof is Bolted to Sidewall with 5/16" x 3-1/2" Carriage Bolts
- New 3" Roof Radius



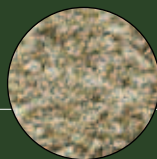
Cold room tested to ZERO degree fahrenheit with standard insulation and no tank freezing!

Fabric Choices

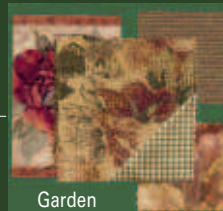
Cedar Creek & Silverback



Maze



Fern



Garden



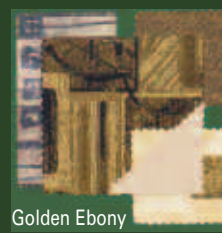
Sage Meadow



Vintage Wood



Indigo Suede



Golden Ebony



Diamond Willow



Brick Fire



Sienna Road