

Winnebago
SIGHTSEER[®]
2010



Winnebago SIGHTSEER

See the country in a Winnebago Sightseer. With beautiful cabinetry and available full-body paint it's a coach you'll want to be seen in, too. Inside you'll find exciting features like the 40" LCD TV in the 31E and 37L and available UltraLeather™ on the furniture and cab seats. Plus, it has all the SmartSpace™ amenities you expect in a Winnebago motor home, making the most of the available space. You can even have your choice of a Ford® Workhorse™ or Workhorse front engine diesel chassis. With so many choices, including the triple-slideout 37L floorplan with an available fireplace and a pull-out desk inside a stylish cabinet, it's easy to see yourself in a 2010 Winnebago Sightseer.

Perfectly Appointed

A complete galley provides everything you need to prepare delightful meals or quick snacks for you and your guests, including a microwave oven and a Magic Chef® range with your choice of storage drawers or an oven. For added cooking flexibility, you may also choose the microwave/convection oven.

Plentiful storage with full-extension drawer slides holds all of your kitchen utensils. Select the interior upgrade package for a galley backsplash, galley sink covers and the Dream Dinette™ table. You can also upgrade to the large-capacity two-door refrigerator/freezer with ice maker and a water filtration system.

Entertainment features include a front overhead 32" LCD TV on the 33C and 35J or a 40" mid-coach LCD TV on the 31E and 37L. The 37L also features a second mid-coach 19" or optional 26" LCD TV. For added flexibility, add an available second 19" front overhead LCD TV on the 31E. All TVs are connected to the dash stereo, which includes a CD/DVD player for your favorite movies. Both the TV and CD/DVD player run on 12-volt power when generator or shoreline power is not available.



GoWinnebago.com Watch key feature videos, take interactive tours, see the latest promotional offers and a whole lot more at GoWinnebago.com.



Easy Living Contemporary styling provides a warm and inviting environment. Cab seats swivel and become integral components of the living area.



BenchMark® The BenchMark full-comfort dinette features innerspring cushions and is shown here with the upgraded Dream Dinette table, which easily adjusts with one hand to change the height or for quick conversion to a comfortable bed.

Bunk Beds Let the kids drift off watching their favorite movie by adding personal DVD players to the bunk beds in the 35J.



Comfort Sofa Sleeper

The sofa/sleeper you've always wanted is here. Never before has converting your sofa into a bed been so easy—or this comfortable.



1. By day it's a plush sofa.



2. A hidden drawer stores bed linens.



3. At night, the sofa easily folds out into a bed.



4. The mattress quickly inflates and deflates using a built-in power source.

Travel Without Reservation

The cozy bedroom in the Sightseer makes every destination feel like home. It's easy to plan for trips when you know you have plenty of available storage and the ability to tow up to 5,000 pounds.⁵ Reach your dream destination and stretch out beneath the available patio awning. It is a fine complement to the deluxe graphics packages or the available full-body paint.

A 5,500-watt Cummins Onan® Marquis Gold™ generator provides plenty of power when no shoreline source is available. An inverter is also available for even more power options. The available hydraulic jacks can be controlled from the cab, entrance door or service center so you can watch the jacks lower into position.



Sleep Tight A generous rear slideout creates a comfortable and inviting bedroom. A queen-size bed on the 31E and 33C or a king-size bed on the 35J and 37L (available on 33C) provides a great night's rest. A 19" TV is available, which incorporates easy-access connection points in the wall if you want to connect a DVD player.



High Style The Sightseer both looks and feels great with a one-piece windshield, two exterior graphics packages, four full-body paint packages and available, energy-efficient dual-glazed, thermo-insulated windows.



Systems Center

The OnePlace® systems center houses all of your important switches and gauges. The PowerLine® energy management system monitors 110-volt usage and cycles appliances on and off to prevent campground overloads. TrueLevel™ uses sonar technology to read liquid levels from outside the tank. There are no probes to corrode or clog, just accurate readings time after time.



STOREMORE® You'll never have to crawl on your hands and knees thanks to the roomy StoreMore® compartments that extend with the slideroom (31E, 33C and 35J).



Exterior Entertainment Center The available exterior entertainment center includes AM/FM stereo, CD player, remote, removable table and speakers, all in a lockable compartment.



QuickPort.

The QuickPort® service connection hatch allows you to stay connected even with the bay door closed.



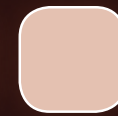
Sideview Cameras Available sideview cameras activate with the turn signal for added confidence when maneuvering.

Floorplans & Specifications

Dimensions shown are for sleeping space only and may vary due to styling differences. Dashed lines denote overhead storage areas. Floorplans and specifications are also available online at GoWinnebago.com.



Standard
UltraLeather



Optional
UltraLeather



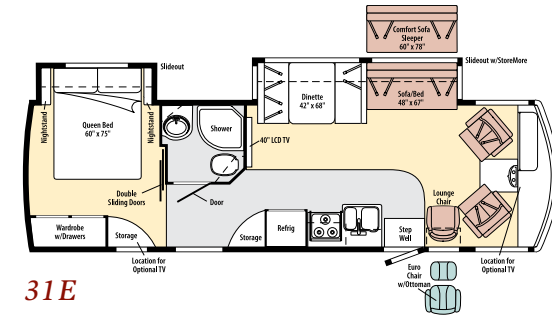
Carpet



Vinyl

Weights & Measures

	31E	33C	35J	37L
Length	32'7"	34'3"	35'7"	38'3"
Exterior Height ¹	12'3"	12'3"	12'3" ^A /12'5" ^{B,D,F}	12'5"
Exterior Width ²	8'5"	8'5"	8'5"	8'5"
Exterior Storage ³ (cu. ft.)	85.9	89	92.8	100.7
Awning Length - Front/Rear	18'	19'	14'	11'6"/17'
Interior Height	6'8"	6'8"	6'8"	6'8"
Interior Width	8'	8'	8'	8'
Freshwater Capacity w/Heater ⁴ (gal.)	90	86	81	100
Holding Tank Capacity - Black/Gray ⁴ (gal.)	38/44	39/59	44/48	50/44
LP Capacity ⁵ (gal.)	18	18	18	18
Fuel Capacity (gal.)	75 ^{A,C} /40 ^E	75 ^{A,C} /40 ^E	75 ^{A,B,D} /40 ^F	75 ^{B,D} /40 ^F
GCWR ⁶ (lbs.)	26,000	26,000	26,000	26,000
GVWR (lbs.)	22,000 ^{A,C} /20,500 ^E	22,000 ^{A,C} /20,500 ^E	22,000	22,000
GAWR - Front (lbs.)	7,500	7,500	7,500 ^{A,B} /8,500 ^{D,F}	7,500 ^B /8,500 ^{D,F}
GAWR - Rear (lbs.)	15,000 ^A /14,500 ^C /13,500 ^E	15,000 ^A /14,500 ^C /13,500 ^E	15,000	15,000
Wheelbase	208"	220"	228"	248"



31E

A Ford F53 Chassis w/19.5" Tires

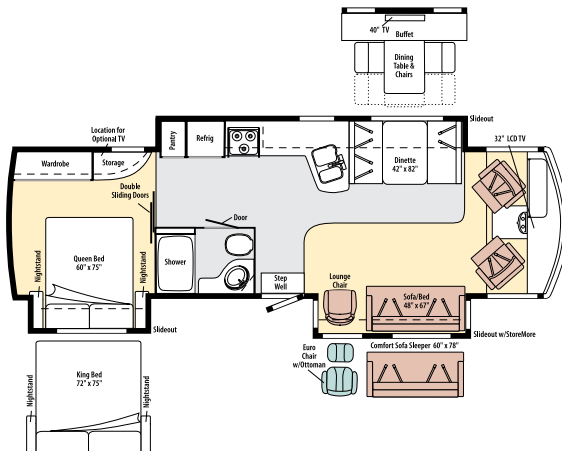
B Ford F53 Chassis w/22.5" Tires

C Workhorse W22 Chassis w/19.5" Tires

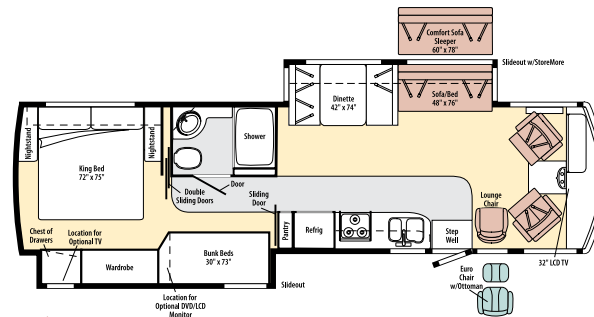
D Workhorse W22 Chassis w/22.5" Tires

E Workhorse W20 Diesel Chassis w/19.5" Tires

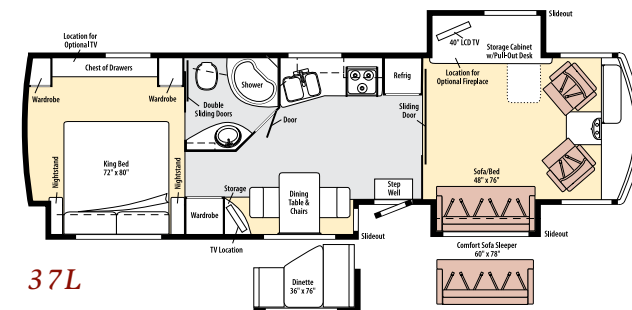
F Workhorse W22 Diesel Chassis w/22.5" Tires



33C
NEW



35J



37L

Chassis

Ford® F53 Chassis

- 362-hp 6.8L Super Duty V10 SEFI Triton® engine
- TorqShift™ 5-speed automatic transmission
- Hydraulic brakes
- 4-wheel ABS
- 130-amp. alternator w/19.5" tires or 175-amp. alternator w/22.5" tires

7-pin trailer wiring

Trailer Hitch¹: 5,000-lb. drawbar/500-lb. maximum vertical tongue weight

Stainless steel wheel liners (w/19.5" tires)

Stylized aluminum wheels (w/22.5" tires)

31E	33C	35J	37L
o	o	o	o
o	o	o	o
o	o	o	o
o	o	o	o

Optional Equipment

Automatic hydraulic leveling jacks w/3-position controls

Workhorse™ Chassis

- 340-hp 8.1L GM 8100 Vortec™ engine
- Allison® 1000 MH 6-speed automatic transmission w/overdrive
- Hydraulic brakes w/ABS
- 145-amp. alternator

Workhorse Diesel Chassis

- 230-hp V8 Navistar® MaxxForce® diesel engine
- Allison 1000 MH 6-speed automatic transmission w/overdrive
- Hydraulic brakes w/ABS
- 145-amp. alternator

Cab Conveniences

Cab Seats: armrests, lumbar support and multi-adjustable slide/recline/swivel

Stereo System: AM/FM, CD/DVD, alarm clock, weather band, front input jack and remote

Chassis/house battery radio power switch

Convenience tray w/cup holders

Power assist steering w/tilt wheel

12-volt powerpoint

Cruise control

Exterior adjustable mirrors

Map lights

Sunvisors

C.B. wire prep

Cab wraparound curtain

31E	33C	35J	37L
o	o	o	o
o	o	o	o
o	o	o	o
o	o	o	o

Optional Equipment

Rearview monitor system w/one-way audio

Sideview camera monitor system (requires rearview monitor system)

Defroster fans

Power mirrors w/defrost

6-way power driver seat

Interior

19" LCD TV (37L)

32" LCD TV (33C & 35J)

40" LCD TV (31E & 37L)

Amplified digital TV antenna

Satellite system ready

Mini blinds (lounge, dinette and galley)

Pleated shades (bedroom)

OnePlace® systems center

Tinted windows

Roof vent (lounge)

Powered roof vent (bath)

Key-activated slideroom master lock switch

31E	33C	35J	37L
o	o	o	o
o	o	o	o
o	o	o	o
o	o	o	o
o	o	o	o
o	o	o	o
o	o	o	o
o	o	o	o

Optional Equipment

Electric fireplace

19" LCD TV

26" LCD TV

Dining table/buffet/40" LCD TV

Interior Upgrade Package: galley backsplash, Dream Dinette™ dining table (NA 37L), range cover, galley sink covers, refrigerator insert upgrade, 2 throw pillows, single-control lavatory faucet

Day/night pleated shades (lounge, dinette and bedroom)

Tinted, dual-glazed, thermo-insulated windows

Vinyl floor covering (front to bedroom; cab area and slideouts carpeted)

Satellite dish antenna

Powered ventilator fan (lounge)

Galley

Laminate countertops

Flip-up countertop extension (31E & 35J)

2-door refrigerator/freezer

Microwave oven

3-burner range top w/storage below

Vented range hood

31E	33C	35J	37L
o	o	o	o
o	o	o	o
o	o	o	o

Optional Equipment

Microwave/convection oven

Large capacity 2-door refrigerator/freezer w/ice maker and water filter

3-burner range w/oven

Bath

Laminate countertop

Shower w/wall surround

Flexible showerhead

Textured glass shower door

Skylight

Bedroom

Innerspring mattress

Bedsread, pillows and shams

Bunk beds w/foam mattress, mattress cover, pillows, shams and privacy curtains (35J)

31E	33C	35J	37L
o	o	o	o

Optional Equipment

2 DVD players w/headphones, 8.5" LCD monitors (bunk area)

19" LCD TV, cable ready for a DVD player

Exterior

Automatic entrance door steps

Porch light

Lighted storage compartments

Main entrance w/screen door

Premium smooth high-gloss skin

KeyOne™ lock system

Front mud flaps

31E	33C	35J	37L
o	o	o	o
o	o	o	o
o	o	o	o
o	o	o	o

Optional Equipment

Acrylic patio awning w/metal wrap (31E & 35J) vinyl w/deluxe graphics)

Second acrylic patio awning w/metal wrap

Entertainment Center: AM/FM stereo, CD player, remote, speakers, lockable compartment and removable table

Ladder

Low front protective mask (w/full-body paint)

Heating and Cooling System

Two high-efficiency roof air conditioners w/energy management system

35,000 BTU low-profile furnace (31E & 33C)

40,000 BTU low-profile furnace (35J & 37L)

31E	33C	35J	37L
o	o	o	o

Optional Equipment

Two high-efficiency air conditioners w/heat pumps

Electrical System w/QuickPort®

AC/DC electrical distribution system, 45-amp. converter/charger w/remote

30-amp. power cord

5,500-watt Cummins Onan® Marquis Gold™ gas generator

2 deep-cycle, Group 31 batteries

Chassis and coach battery disconnect systems

PowerLine® energy management system

Automatic dual-battery charge control

Auxiliary start circuit

31E	33C	35J	37L
o	o	o	o
o	o	o	o
o	o	o	o

Optional Equipment

50-amp. power cord, automatic shoreline/generator changeover switch

300-watt inverter

600-watt inverter

5,500-watt Cummins Onan Marquis Gold LP generator (requires diesel chassis option)

Plumbing System w/QuickPort

Service Center: color labels, cable TV input, pressurized city water hook-up w/diverter valve, 3" drainage valve, portable satellite dish hook-up, power cord, 10' sewer hose

6-gallon LP water heater

LP tank

On-demand water pump

TrueLevel™ holding-tank monitoring system

Winterization Package: water heater bypass valve and siphon tube

Heated holding-tank compartment

31E	33C	35J	37L
o	o	o	o
o	o	o	o

Optional Equipment

Exterior wash station w/pump switch

6-gallon 110 volt/LP water heater w/motoraid/auto heater

Safety

Seat belts

Child seat tether anchor in forward-facing dinette seat (NA 33C)

LP, smoke and carbon monoxide detectors

10 BC fire extinguisher

Ground fault interrupter

High-mount brake lamps

Warranty⁷

12-month/15,000-mile basic warranty⁸

36-month/36,000-mile limited warranty on structure⁸

10-year limited parts and labor warranty on roof skin⁸

o Optional.

NA Not Available.

- The height of each model is measured to the top of the tallest standard feature and is based on the curb weight of a typically equipped unit. The actual height of your vehicle may vary by several inches depending on chassis or equipment variations. Please contact your dealer for further information.
- Sightseer floorplans feature a wide-body design – over 96". In making your purchase decision, you should be aware that some states restrict access on some or all state roads to 96" in body width. Before making your purchase decision, you should confirm the road usage laws in the states of interest to you.
- The load capacity of your motor home is designated by weight, not by volume, so you cannot necessarily use all available space when loading your motor home.
- Capacities are based on measurements prior to tank installation. Slight capacity variations can result due to installation applications.
- Capacities shown are tank manufacturer's listed water capacity (W.C.) Actual filled LP capacity is 80% of listing due to overfilling prevention device on tank.
- Actual towing capacity is dependent upon your particular loading and towing circumstances, which includes the GVWR, GAWR and GCWR as well as adequate trailer brakes. Please refer to the Operator's Manual of your vehicle for further towing information.
- See separate chassis warranty details provided in Owner's Manual.
- See your dealer for complete warranty information.

Not all items available in combination. See dealer for details.

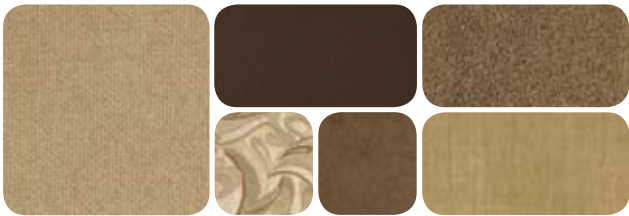
Winnnebago Industries® continuing program of product improvement makes specifications, equipment, model availability and prices subject to change without notice. Comparisons to other motor homes are based on the most recent information available at printing.

Interior Décor

Choose from three fabric collections and four cabinet wood choices with hidden hinges.



Aspen Leaf with available Bark UltraLeather™



Sesame Seed with available Truffle UltraLeather



Stargazer with available Timber UltraLeather



Honey Cherry

Belmont Maple

Forest Cherry

Coffee-Glazed
Sierra Maple

Exteriors

The Legacy Rolls On

For more than fifty years, Winnebago Industries® has been creating the RVs and motor homes that have enabled people to live their dreams, see the country, visit friends and enjoy more time together as a family. The Sightseer® continues the Winnebago legacy of combining innovations, features and quality in a coach you'll be proud to call home.



Pewter
DELUXE GRAPHICS



Canyon
DELUXE GRAPHICS



Garnet
FULL-BODY PAINT



Desert Sand
FULL-BODY PAINT



Iron Gray
FULL-BODY PAINT



Medium Stellar Blue
FULL-BODY PAINT



THE MOST RECOGNIZED
NAME IN MOTOR HOMES™




Built by Winnebago Industries. Built to last.

Winnebago motor homes are built by Winnebago Industries, the company that defined motor homes. The company that built its reputation on quality construction. The company that transformed the motor home concept into a way of life.

SUPER STRUCTURE Today, Winnebago Industries brings that reputation for quality and more than fifty years of RV innovation to the design and construction of every motor home. It's all a part of SuperStructure®, our exclusive system of proprietary structural components that instills in each motor home improved strength and durability.

Solid Foundation Steel and aluminum truss work provides a solid, flat foundation for the floor and sidewalls. Our engineers enhance the handling and stability by taking special care to properly distribute the weight of all components.

 **Interlocking Joints** The floor, sidewalls and roof are all integrally connected using interlocking joints. This ensures the Sightseer body is a cohesive unit with maximum strength and durability.

Attention to Detail Whether it's sending every Sightseer through a high-pressure water tunnel to check for leaks or labeling individual wires and barcoding parts to save time and frustration during service, Winnebago Industries considers every detail to ensure your Winnebago motor home provides you with years of pleasure.

Strong as Steel Key appliances and cabinetry are secured to a metal substructure for added stability and safety.

E-Coating Winnebago Industries employs an automotive-style dip tank process to apply an advanced electro-deposition coating on critical steel components for corrosion protection.

Thermo-Panel® Sidewalls Invented by Winnebago Industries, Thermo-Panel construction combines a fiberglass panel, high-density block-foam insulation and aluminum support structures to create some of the most long-lasting, lightweight sidewalls in the industry.



Winnebago 1-year-old fiberglass roof



Competitor's 1-year-old rubber roof

Fiberglass Roof The Sightseer features a crowned, one-piece fiberglass roof, backed with a 10-year limited parts-and-labor roof skin warranty. Fiberglass offers superior strength, attractiveness and durability over the rubber roofs found on many competitive models, which can chalk, streak and degrade over time. Fiberglass also provides increased puncture and tear resistance.



GoWinnebago.com
Visit us on the web for more information on all of our motor homes, the latest product updates and a host of web-exclusive content.



Take a Tour We're proud of our process, state-of-the-art facilities and the people who make Winnebago Industries number one. We invite you to visit our complex in Forest City, Iowa for a first-hand look at the dedication and technology behind every motor home we build.



Recognized Quality The Recreation Vehicle Dealer Association annually rates RV manufacturers and awards the Quality Circle Award to manufacturers that provide exceptional products, service and support. Winnebago Industries is proud to be the only manufacturer that has received this award every year since its inception.



Committed to Service We back our motor homes with the industry's best service after the sale:

- 12-month/15,000-mile basic limited warranty
- 36-month/36,000-mile warranty on structure
- 10-year standard limited parts-and-labor roof skin warranty
- Complimentary 24-hour roadside assistance program

- RV Technical Assistance Hotline
- RV Service Appointment Assistance
- Emergency Trip Interruption
- Emergency Message Service
- Nationwide Trip Routing
- Fee-Free Travelers Cheques



- TripSaver Fast Track Parts guarantees that in-stock warranty parts ship directly to your dealer within 24 hours
- National dealer service network



WIT Club Winnebago owners are like family. Joining the Winnebago-Itasca Travelers Club is a great way to meet and travel with other Winnebago enthusiasts. Members enjoy:

- Caravans and rallies
- Local and state group activities
- RV travel benefits

For Sales and Service Information Contact:



THE MOST RECOGNIZED
NAME IN MOTOR HOMES™

NYSE listing: WGO

Printed in USA

Seat belts are your most important hookup. Always buckle up.
© 2009 Winnebago Industries, Inc.