



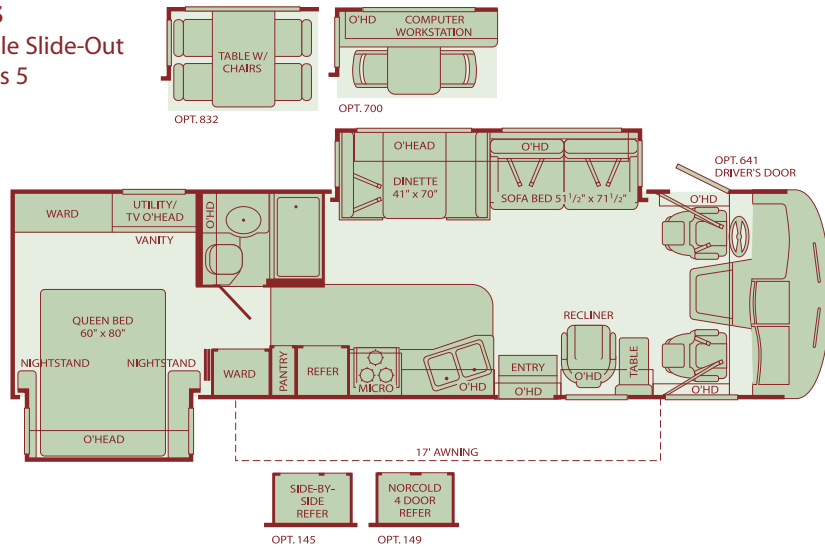
{Southwind}

SOUTHWIND Class A Gas 2005

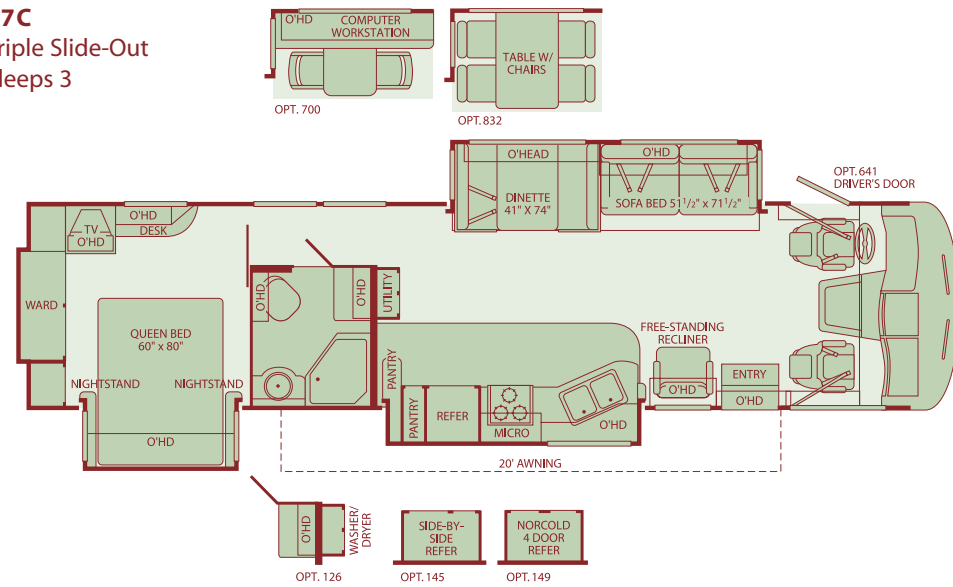


Southwind Floor Plans

32VS Double Slide-Out Sleeps 5

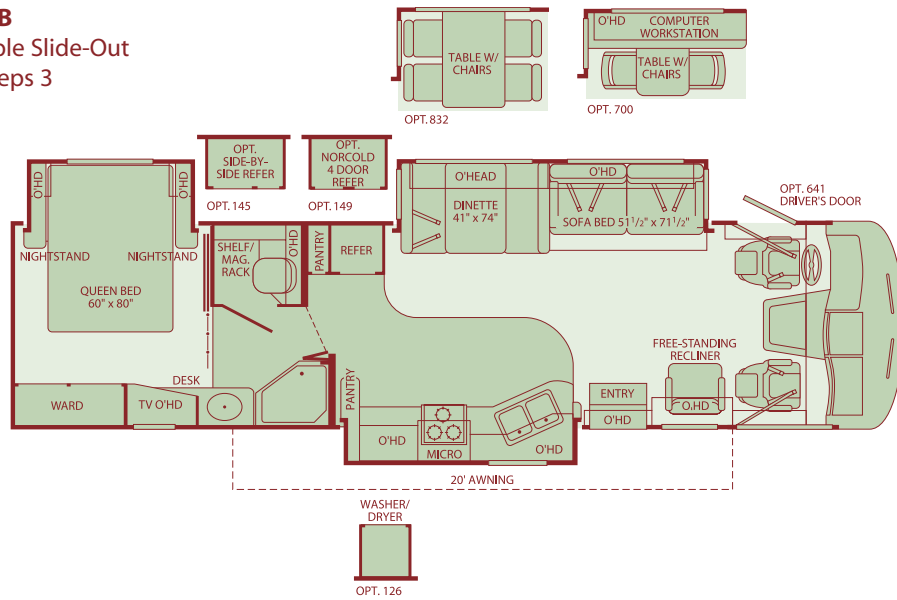


37C Triple Slide-Out Sleeps 3

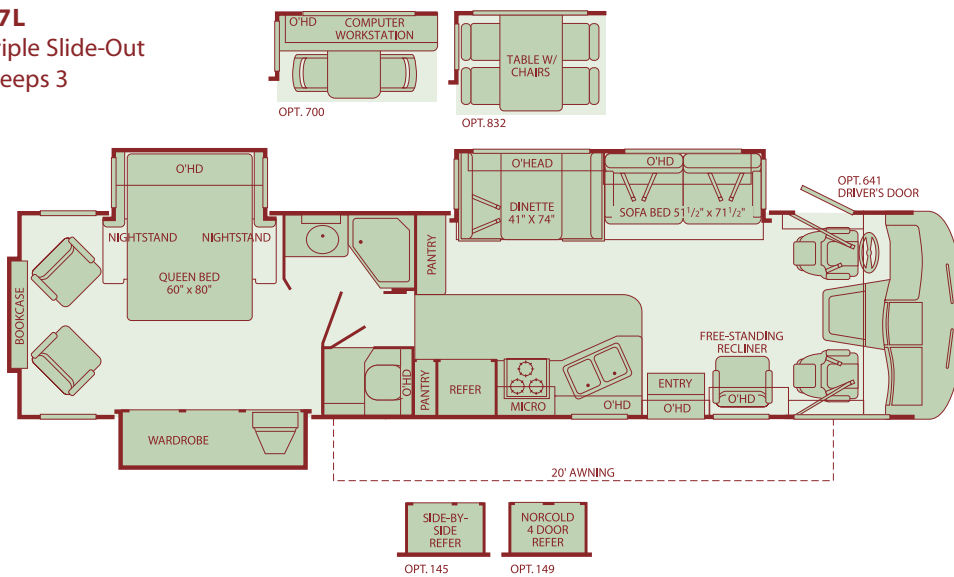


Seatbelt configuration may vary depending on options chosen.
Sleeping capacity based on standard layout. Optional furniture
may increase or decrease sleeping capacity.

36B
Triple Slide-Out
Sleeps 3



37L
Triple Slide-Out
Sleeps 3



Setting the Standard in Motor Home Quality.

Fleetwood® prototypes are exposed to thousands of miles of durability testing. Those components that don't survive are redesigned until they do. This sets our standard in safety and durability.

Fleetwood's Tuff-Ply roofing technology is one of the most durable roofing materials on the market and also resists radiation by reflecting sunlight (reduces chalking). White roof material minimizes heat build-up, keeping the temperature cool and comfortable.

Reliable TuffPEX® plumbing runs throughout each vehicle creating a durable seal on all internal tubing. TuffPEX® assures water flow and functions in the coldest of temperatures. The TuffPEX® system is an industry leader in quality plumbing.

For each outer wall, Fleetwood uses one seamless, solid piece of its exclusive Tuff-Coat® fiberglass composite. It resists UV rays, cracks and impacts. Our products look newer longer and that's a big plus at resale time.

To assure a strong, weather-resistant structure, Fleetwood Vacu-bonds® all sidewalls, floors and ceilings to a durable aluminum or steel frame. The Vacu-bond® process is unmatched by many competitors.

Fleetwood's patented Power Platform supports the body with a rigid frame that reinforces the chassis to make it even stronger. This allows Fleetwood to offer triple slide-outs.

Fleetwood sinks and shelves are designed to handle full-size kitchenware. Few competitors can say the same.

Standard Features

Interior

THROUGHOUT

- Whole Coach Water Filtration System*
- Deluxe Ball Bearing, Full Extension Drawer Guides*
- 84" Interior Ceiling Height*
- Dual Roof A/C High Efficiency w/Solar Panel and Chill Grilles*
- Wood Drawers
- 10-Gallon, Quick-Recovery Water Heater w/Direct Spark Ignition (Gas/Electric)

- Furnace 34,000 BTU (30,000, 20,000-36B & 37C)
- Water Heater Bypass System
- Demand Water Pump w/Filter
- Wall Switches
- Dual 6V/Deep-Cycle House Batteries
- 3 Interior Decors
- Wall-to-Wall Nylon Carpet w/Carpet Pad
- Woven Jacquard Feature Fabrics

- Beveled Mirrors
- Decor Lighting
- Cherry Wood Grain or Maple Wood Grain
- Fluorescent Ceiling w/Dual Bulbs
- Incandescent Lighting
- Interior Egress Assist Handle
- Smoke Detector/Alarm
- LPG Detector/Alarm
- CO Detector/Alarm
- 10 ABC Fire Extinguisher

DRIVER CONVENIENCE

- Driver/Passenger Ultraleather Captain's Chairs w/Reclining Back/Slide Controls w/Power Driver Seat*
- DSS Manual Lift/Satellite Dish
- Intermittent Wiper Control
- 3-Point Front Seat Belts
- Tilt Steering Wheel

- Double-Swivel Sun Visors w/Map Pockets
- Engine Cover Convenience Tray
- Cruise Control
- Low Profile Engine Cover
- Radio w/Single CD AM/FM/MX-Electronic Tuning
- Computer Workstation in Dash

- Auxiliary Start Circuit
- Battery Disconnect System
- Auto A/C Heater Combo
- Radio Main/Switch-Auxiliary Power
- Dash Fans

LIVING ROOM

- 27" Panasonic® Flat Screen TV in Overhead*
- Residential Seat Styling

- Day/Night Pleated Shades
- Hi-Fi VCR
- Entry Assist Handle

- Free Standing Lounge Recliner

GALLEY

- Large Double Stainless Steel Sink*
- 8-cu. ft. Dometic® Double-door Refrigerator*
- 1.0-cu. ft. Microwave Oven
- 3-Burner, High-Output Range w/Oven
- Range Cover-Flush Mount

- Light/Power Range Hood
- Single-Lever Galley Faucet
- Fan-Tastic® Power Roof Vent
- Solid Surface Countertops
- Sink Cover/Cutting Board
- Brushed Chrome Finish Cabinet Hardware
- Solid Divider Doors

- Slide-Out Dinette Bins w/Latches
- Trash Basket
- Skylight
- Radius Corner Cabinetry
- Adjustable Cabinet Shelves (Select Cabinets)

BEDROOM

- 20" Flat Screen Panasonic® TV*
- Restonic® Deluxe Pillow Top Innerspring Mattress*
- Headboard

- Telephone Jack in Dash & Bedroom
- Rear Speakers
- Bedspread w/Decor Pillows
- TV Cabinet

- Wardrobe Lighting
- Night Pleated Shades

BATHROOM

- Fan-Tastic® Power Roof Vent*
- Molded Tub/Shower Acrylic w/One-Piece Enclosure*

- Porcelain Toilet w/Water Saver
- Toilet Tank San-T-Flush™ System
- Make-Up Lights

- Skylight in Tub/Shower
- Vinyl Floor Covering
- Chrome Bath Accessories

Exterior

THROUGHOUT

- Heated Water & Holding Tank Compartments*
- Awning Rail/Drip Molding (Both Sides)*
- TV Antenna
- Dual Patio Receptacles
- 120V/12V AC/DC Converter Central Electrical Panel
- 3-Way Water Pump Switch
- 5.5kW Generator

- 50-amp Service
- Fiberglass Front/Rear Cap
- Molded Front Quarter Panels
- Molded Rear Wheel Well Trims
- Dual Pane Slider Windows
- Stainless Steel Mesh Front Grille
- 3 Colorway Graphics to Match Decor
- Stainless Steel Wheel Simulators
- Awning

- Large, Curved Aerodynamic Windshield
- Park Cable Receptacle
- Single Motor Windshield Wipers w/Wet Arm
- Halogen Headlights
- Steel Outriggers
- Mud Flaps
- Slide Topper Awnings

AUTOMOTIVE

- 4-Point Automatic Levelers *
- Trailer Hitch with 7-Point Electrical Hook-Up†

†The chassis manufacturer recommends the installation of a supplemental brake control system to activate the brakes on the vehicle or trailer you are towing.

SAFETY/CONVENIENCE

- Rear Vision Camera w/One-Way Sound*
- Swing-Up Engine Access Door
- Entry Door w/Deadbolt Latch

- Exterior Assist Handle
- Roof Ladder
- Utility Compartment w/Exterior Shower

- Heated Remote Rear View Mirrors
- Power Entry Step
- Porch Light
- Underhood Utility Lights

STORAGE

- Polyethylene Luggage Compartment Boxes*
- Single Paddle/Latches

- Insulated Luggage Doors/Aluminum Skin
- Continuous One-Piece Bulb Seal

- Lighted Compartments
- Steel Seal Frames
- Gas Lift Strut Supports

BODY STRUCTURE

- Vacu-bond® Walls w/Smooth, High-Gloss Exterior Fiberglass*
- Basement Floor Configuration*

- Royal Tuff-Ply Roof*
- Radius Roof w/Ducted A/C-Flat Interior Ceiling

- Vacu-bond® Upper/Lower Floors
- Aluminum Wall/Ceiling Framing
- Steel Surface on Bulkhead

Options

DRIVER CONVENIENCE

- King Dome Automatic Locating Satellite Dish
- Dual Media Radio w/AM/FM Cassette/CD/MX-Electronic Tuning
- Driver's Door w/Manual Crank Window Lift
- CB Radio Ready
- In-Dash CD 6 Satellite Radio

BEDROOM

- Torque Windows Upgrade
- Accessory Package (Hair Dryer, Vacuum & Flashlight)

LIVING ROOM

- 5 Disc DVD Home Theater Sound System

GALLEY

- Dinette Table w/Free-Standing Chairs
- Dinette/Computer Workstation
- 12-cu. ft. Side-by-Side Dometic® Refrigerator w/Ice Maker

AUTOMOTIVE

- Ford® Chassis 6.8L Triton™ V10 Engine
- Workhorse™ Chassis 8.1L Vortec Engine

- Convection Microwave Oven
- 8-cu. ft. Dometic® Stainless Steel Double Door Refrigerator w/Ice Maker
- Norcold® 4-Door Refrigerator w/Ice Maker
- Washer/Dryer (Select Models)

THROUGHOUT (EXTERIOR)

- CSA Package
- Electric Awning-Weather Pro (32VS)
- Full Body Paint 3 Colors
- Dual A/C w/Heat Pump w/Solar Panel On Front A/C

Fleetwood Exclusives

- Vacu-Bond® Walls w/Smooth High-Gloss Exterior Tuff-Coat® Fiberglass*
- Vacu-bond® Floor*

- Tuff-Ply UV-Resistant Heat/Cold Insulated Roofing Technology*
- Power Platform*

- Complete TuffPEX® Plumbing System*

* Denotes Fleetwood's Key Features

Weights and Measurements

FORD®/WORKHORSE™ CHASSIS	32VS	36B	37C	37L
Engine Displacement (Liters)	6.8/8.1	6.8/8.1	N/A/8.1	N/A/8.1
Wheelbase (Inches)	208/208	228/228	N/A/242	N/A/242
GVWR (lbs.)¹	20,500/20,700	22,000/22,000	N/A/22,000	N/A/22,000
Front GAWR (lbs.)²	7,000/7,500	7,500/8,000	N/A/8,000	N/A/8,000
Rear GAWR (lbs.)²	13,500/13,500	14,500/14,500	N/A/14,500	N/A/14,500
Base Weight (lbs.)³	16,960/17,600	18,230/19,260	N/A/19,050	N/A/19,200
GCWR (lbs.)⁴	25,500/25,700	26,000/26,000	N/A/26,000	N/A/26,000
Hitch Rating Weight (lbs.)[*]	5,000/5,000	5,000/5,000	N/A/5,000	N/A/5,000
Tongue Weight (lbs.)[*]	500/500	500/500	N/A/500	N/A/500
Fuel Capacity (gal.)	75/75	75/75	N/A/75	N/A/75

DIMENSIONS AND CAPACITIES

Overall Length⁵	32' 10"	35' 10"	37' 4"	37' 10"
Overall Height (with A/C)[†]	12' 7"	12' 7"	12' 7"	12' 7"
Overall Width (maximum)⁶	102"	102"	102"	102"
Interior Height (maximum)	84"	84"	84"	84"
Interior Width (maximum)	96"	96"	96"	96"
Fresh Water Holding Tank (gal.)	80	80	80	80
Grey Water Holding Tank (gal.)	58	58	58	58
Black Water Holding Tank (gal.)	42	42	42	42
Appliance LPG Tank (gal.) (WC)⁷	25	25	25	25
Water Heater Tank (gal.)	10	10	10	10

Liquid Weight Reference: Water (gal) = (8.3 lbs/3.8 kgs) Fuel (gal) = (6.1 lbs/2.8 kgs) LPG (gal) = (4.2 lbs/1.9 kgs)

Metric Conversion: Multiply pounds x 0.453 to obtain kilograms. Multiply gallons x 3.785 to obtain liters.

CHASSIS

Model: Ford®/Workhorse™	Transmission: 4-Speed Automatic with Overdrive 4R100/ 5-Speed Automatic with Overdrive – Allison® 1000 Series
Engine: 6.8L Triton™/8.1L Vortec	
Torque: 420 lb.-ft. @ 3250 RPM/ 455 lb.-ft. @ 3200 RPM	Alternator Amps: 130 Amp/145 Amp Horsepower: 310 HP/340 HP

- GVWR (Gross Vehicle Weight Rating): Means the maximum permissible loaded weight of the motor home. The GVWR is equal to or greater than the sum of the unloaded vehicle weight plus the net carrying capacity.
 - GAWR (Gross Axle Weight Rating): Means the maximum permissible loaded weight a specific axle is designed to carry.
 - Base Weight: Means the estimated weight of the motor home without fuel, options, water, cargo or passengers.
 - GCWR (Gross Combined Weight Rating): Means the value specified by the motor home manufacturer as the maximum allowable loaded weight of this motor home with its towed vehicle. Towing and braking capacities may differ. Refer to Fleetwood and chassis manufacturer manuals for complete information.
 - Length taken from front bumper to rear bumper (excludes accessories).
 - Excludes safety equipment and awnings.
 - Tank Manufacturer's listed water capacity (WC). Actual LPG capacity is 80% of water listing as required by the safety code.
- † Only if standard.

* The chassis manufacturer recommends the installation of a supplemental brake control system to activate the brakes on the vehicle or trailer you are towing.

N/A = Not Applicable

IMPORTANT — PLEASE READ: Product information, photography and illustrations included in this publication were as accurate as possible at the time of printing. For further product information and changes, please visit our website at www.fleetwoodrv.com or contact your local Fleetwood dealer. Prices, materials, design and specifications are subject to change without notice. All weights, fuel, liquid capacities and dimensions are approximate. Fleetwood has designed its recreational vehicles to provide a variety of uses for its customers. Each vehicle features optimal seating, sleeping, storage and fluid capacities. The user is responsible for selecting the proper combination of loads (i.e. occupants, equipment, fluids, cargo, etc.) to ensure that the vehicle's capacities are not exceeded.

What Drives You?

Maybe it's feeling like you're the only one on Earth. Perhaps it's the unique sense of closeness with the great outdoors. Or, it might be the joy that comes from spending quality time with family and friends. Whatever the reason, we know that you have a strong drive to experience everything that comes with spending time on the road. And for more than 50 years, we've shared that passion with you. Because we're RV enthusiasts ourselves, you can see our passion in the vehicles we design and build. Own a Fleetwood, and you'll feel like you're not just traveling, but embarking on an experience unlike any other. Set your own course for adventure and get out there and explore the world around you. Once you do, you'll see what it is that drives us — it's you.

RV OWNERCARE* is a limited one-year/15,000-mile and three year/50,000 - mile structural warranty, whichever occurs first, and it is fully transferable for the first 12 months. RV OWNERCARE is one of the RV industry's most comprehensive programs and includes systems, appliances, components and construction, with no deductible and no service charge. RV OWNERCARE coverage is provided from a company that will be around in the future to service your needs. See your nearest Fleetwood dealer for a full explanation of benefits and restrictions.

CLUB FLEETWOOD As a Fleetwood owner, you're eligible to become a member of our owners' group, Club Fleetwood. It's a perfect way to meet other Fleetwood owners who love to travel to beautiful resorts and vacation spots all across America. Call (877) 577-2560 and join the fun! Or visit www.fleetwood.com/clubs to learn more.

FLEETWOODRV.COM To locate a dealer near you, visit our website or call 1-800-444-4905. We can also be contacted at Fleetwood Customer Relations, P.O. Box 7638, Riverside, CA 92513-7638.

IMPORTANT—PLEASE READ Product information, photography and illustrations included in this publication were as accurate as possible at the time of printing. For further product information and changes, please visit our website at www.fleetwoodrv.com or contact your local Fleetwood dealer. Prices, materials, design and specifications are subject to change without notice. All weights, fuel, liquid capacities and dimensions are approximate. Fleetwood has designed its recreational vehicles to provide a variety of uses for customers. Each vehicle features optimal seating, sleeping, storage and fluid capacities. The user is responsible for selecting the proper combination of loads (i.e. occupants, equipment, fluids, cargo, etc.) to ensure that the vehicle's capacities are not exceeded.

Your local Fleetwood dealer is:



www.fleetwoodrv.com

*For complete info see your Fleetwood dealer. © 2004. Fleetwood Enterprises, Inc. Printed in the USA. Inventory control number SW05F2 11/04.

