

# COUGAR

by Keystone



**HITCH  
VISION**  
(Patent Pending)  
"No Looking Back"

2006 FIFTH WHEELS AND TRAVEL TRAILERS



**HITCH  
VISION**

(Patent Pending)

"No Looking Back"

COMP | MIRROR

## INTRODUCING HITCH VISION

*Hitch Vision allows the Fifth Wheel user complete confidence, using only their mirror, to back up and align their truck to Cougar's extended hitch pin. A built-in mirror enables the user to view everything behind him without turning and straining to see. Dual automotive docking lights allow easy unloading and loading of camping gear day or night. Hitch Vision is designed to add great eye appeal as well as an improved turning radius for your short bed truck. First time RV'ers and experienced RV'ers will tell all their friends about Cougar's new Hitch Vision. Designed by Cougar's product development team, Hitch Vision moves the dial forward in what customers expect out of their RVs. There's no looking back... experience Hitch Vision with your new Cougar today!*

*Leaving home never felt this good...*



*Desert Sunset*



*Summer Sage*



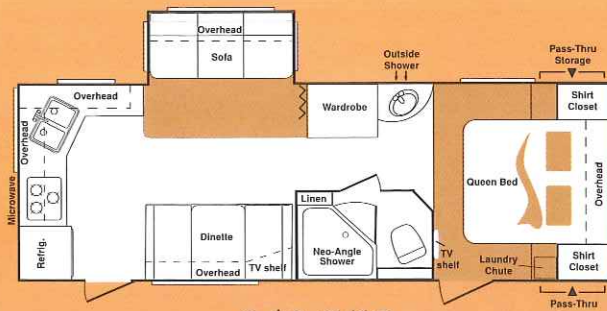
*Ocean Breeze*

*Cougar's 276EFS is warm and inviting in the Ocean Breeze color scheme.*

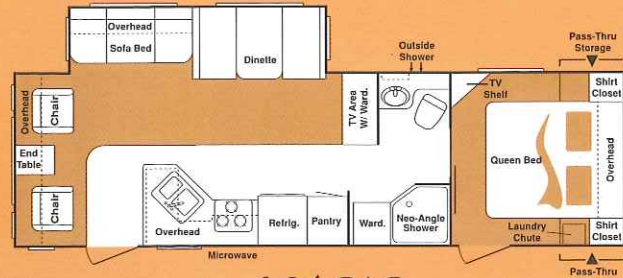


# COUGAR 2006

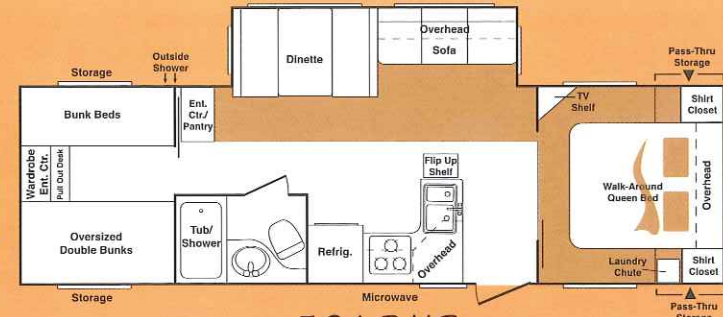
by Keystone



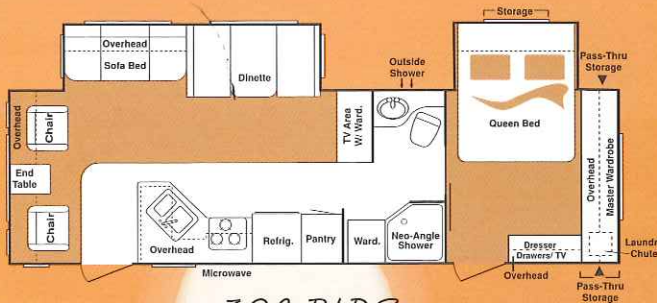
243 RKS



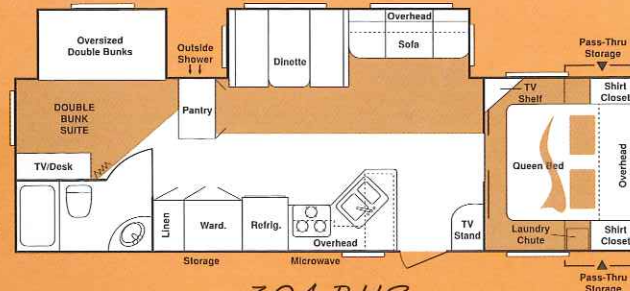
294 RLS



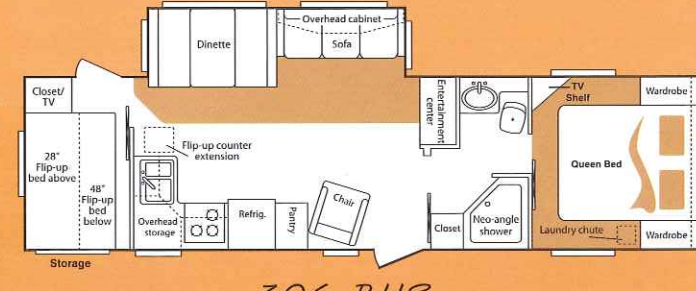
301 BHS



302 RLDS



304 BHS



306 BHS



## TRAVEL TRAILERS

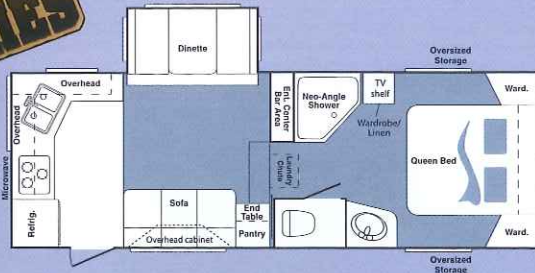
Travel Trailers	Gross Dry Wt. (M/VW)	GVWR	Carrying Capacity	Hitch	Exterior Length	Ext. Height (Top of A/C)	Fresh Water	Waste Water	Grey Water
243 RKS	5860	9370	3510	550	27' 3"	10' 11"	45	30	60
294 RLS	6425	9455	3030	700	31' 10"	10' 11"	45	30	30
301 BHS	6825	9665	2840	820	32' 9"	10' 11"	45	30	30
302 RLDS	7420	9675	2255	850	33' 9"	10' 11"	45	30	30
304 BHS	7225	9565	2340	780	33' 10"	10' 11"	45	30	30
306 BHS	7310	9555	2245	755	34' 8"	10' 11"	45	30	30



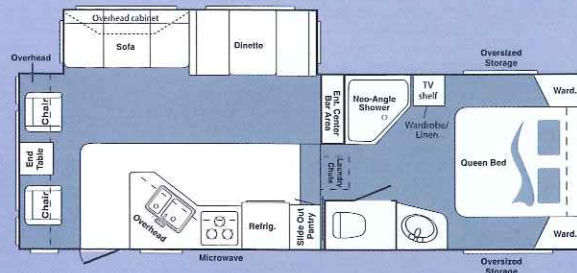
# FIFTH WHEELS

Fifth Wheels	Gross Dry Wt. (M/V)	GVWR	Carrying Capacity	Hitch	Exterior Length	Ext. Height (Top of A/C)	Fresh Water	Waste Water	Grey Water	Upper Bedroom Height
245 EFS	6245	9880	3635	1080	26' 3"	11' 10"	45	30	60	6' 4"
276 EFS	6785	10345	3560	1300	28' 10"	11' 10"	45	30	60	6' 4"
281 EFS	7620	10365	2745	1510	30' 10"	11' 10"	45	30	60	6' 4"
289 EFS	8355	10345	1990	1500	32' 6"	11' 10"	45	30	60	6' 4"
290 EFS	7850	10180	2330	1340	31'	11' 10"	45	30	60	6' 4"
291 EFS	7850	11000	3150	1520	30' 10"	11' 10"	45	30	60	6' 4"
309 EFS	8960	11780	2820	1450	33' 4"	11' 10"	45	30	60	6' 4"
314 EFS	8250	11685	3435	1470	33' 10"	11' 10"	45	30	60	6' 4"

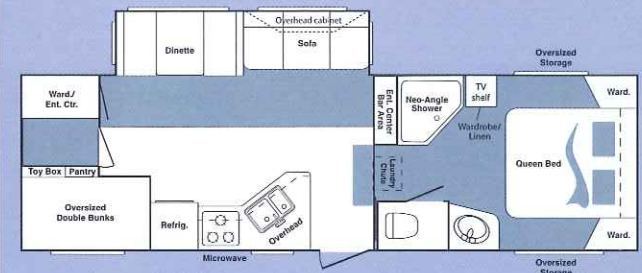
**1/2 TON SERIES**



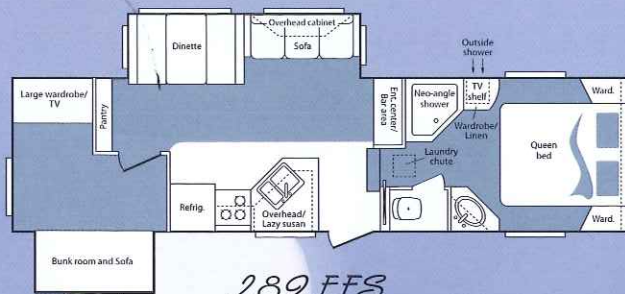
245 EFS



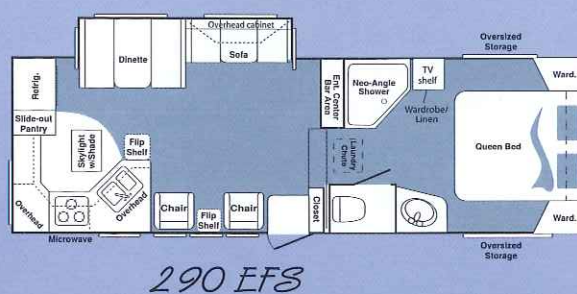
276 EFS



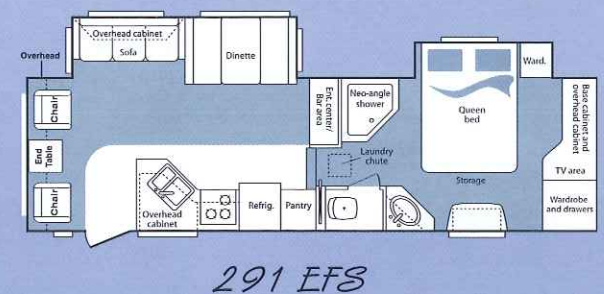
281 EFS



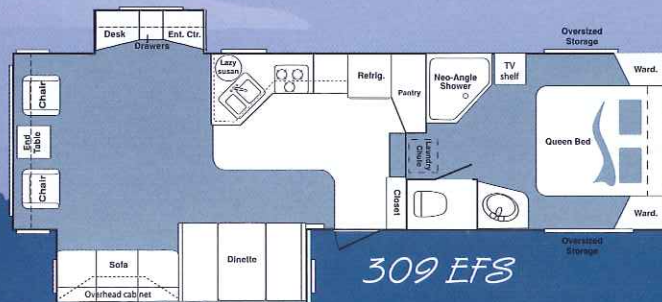
289 EFS



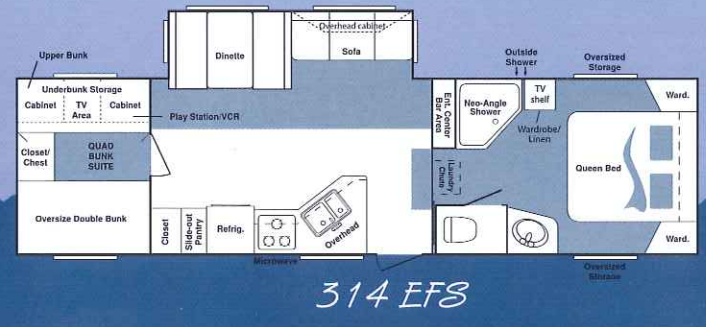
290 EFS



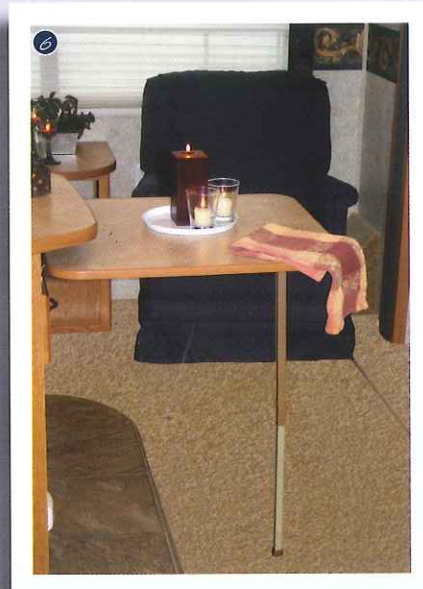
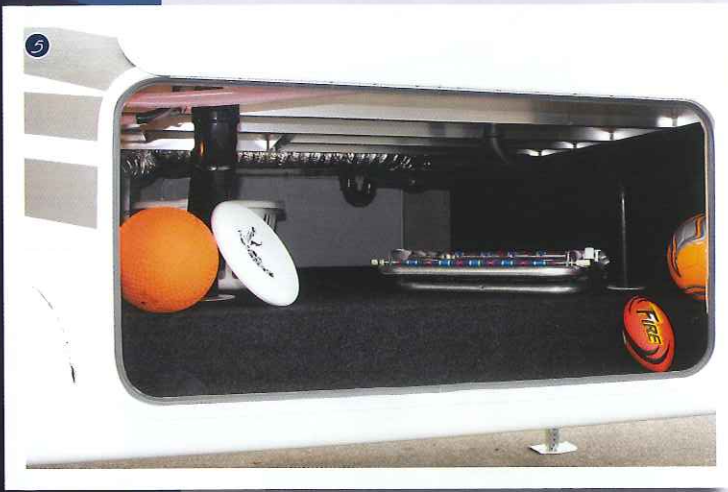
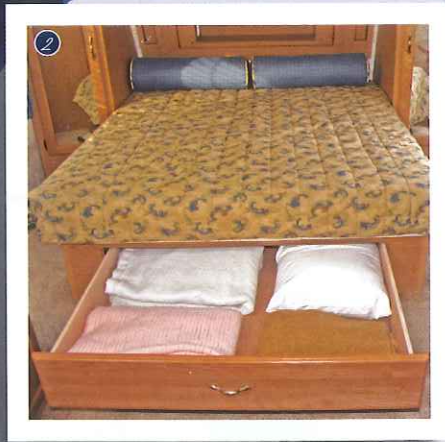
291 EFS



309 EFS



314 EFS



### DISCOVER THE DETAILS

- 1. 12 Volt "On-Demand" Flashlight: Located by entrance door
- 2. Blanket/Shoe Drawer: 40" x 34" under-bed drawer for optimum convenience
- 3. Exclusive Slide-out Bike Rack (except on 1/2 ton series)
- 4. Rear Garage: 68 cubic feet of additional storage (most bunk models)
- 5. Oversized Pass-thru Storage: with divider from battery compartment
- 6. Auxiliary Kitchen Counter Extension (Fifth Wheels only)
- 7. Polar Package: fully enclosed, sectioned underbelly with heated and enclosed dump valves
- 8. Porcelain Foot Flush Toilet
- 9. Laundry chute: available on all models

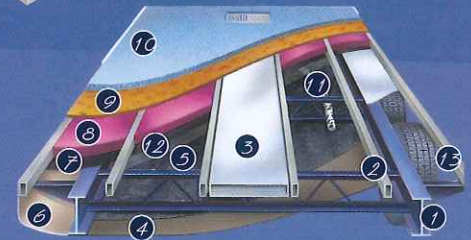
# CONSTRUCTION (5-SIDED ALUMINUM SUPER STRUCTURE)

## Roof (R-14)

1. One-piece EPDM rubber roof membrane with 12 year warranty
2. Aluminum radius roof transition molding
3. 3/8" roof decking
4. 5" fabricated rafters on 16" centers
5. Fiberglass insulation
6. Ceiling decking luan backer
7. Vinyl ceiling panel
8. Insulated, foam-core air conditioning duct
9. Hitch Vision (Patent Pending)

## Sidewalls (R-9)

10. Gel-coated filon fiberglass
11. 1/8" luan board
12. Solid block insulating foam
13. Interior decorator board
14. 2" welded aluminum wall studs
15. Electro-galvanized sheet (EGS) metal backing strips
16. Easy access adjustable snap jack pins
17. Maximum turning radius for short bed trucks
18. Tinted safety glass windows
19. Docking lights



## Floor (R-14)

1. 8" and 10" steel "rolled" I-beam
2. 3" welded aluminum floor
3. 3" large-capacity heat duct
4. 1/4" ABS sectioned underbelly
5. Welded cross members
6. Full radius wrap aluminum enclosure
7. Moisture barrier
8. Fiberglass insulation
9. 5/8" seamless, floor decking
10. Residential-grade carpeting with stain protectant
11. 2" heat duct from furnace into underbelly
12. Enclosed water lines
13. Ultra-lube axles



Large wardrobes (three locations) and a large bed drawer are designed inside the 276EFS for maximum storage.

## COUGAR STANDARDS (MORE THAN ANYONE)

- EXECUTIVE CHEF KITCHEN FEATURING:
  - Real wood cabinet doors - not composite doors
  - Dedicated trash can storage (holds 20-25 gal. container)
  - Oversized double pots and pans drawer
  - Lazy susan in overhead cabinet (most models)
  - Large 2-drawer pull out pantry drawers
  - 100% larger pantry than competitors
  - 22" baker oven with metal baking rack
  - Deep 2-bowl sink with sink cover cutting boards
  - Residential metal kitchen drawer glides with steel ball bearings throughout
- 5-sided aluminum construction
- Residential porcelain toilet with foot pedal
- Ultra lube hubs on axles (all models)
- Snap jack pins (all Fifth Wheels)
- All Fifth Wheel models under 12' exterior height (fit under your 12' door)
- Gel coated filon fiberglass
- 30,000 BTU furnace
- One-piece seamless rubber roof
- All windows in main slideout open

## "CAMPING IN STYLE" PACKAGE

- Day and Night Shades
- Laundry chute
- Black trim safety glass windows (tinted to keep the sun out)
- Microwave oven with turn style
- A & E awning
- Aluminum framed sidewalls, floors, front and rear
- 13,500 BTU air conditioner
- Raised-panel upper cabinet doors

## VALUE PACKAGE

- True home DVD system with speakers and separate zones for living room and bedroom (12 Volt compatible)
- Gas/electric water heater with fast recovery
- Residential tiled shower/tub surround
- TV antenna
- Cable hook-up
- Gel coated filon fiberglass

## SAFETY MUST-HAVES

- Flashlight "on-demand" (12 Volt) in FWs only
- Manual backup on all main slideouts
- T-mold strip on all slideouts to keep slider sweeps on your slideout (stays on in hot weather)
- Backup scare light and doorside light (great for night arrivals at campground)
- LP sensor
- Smoke detector
- Fire extinguisher
- Carbon monoxide detector

## DRY CAMPING FEATURES (FOR THOSE WHO WANT TO EXPLORE)

- 12 Volt stereo
- Large fresh, grey and black tanks on all models
- All slideout lights are 12 Volt
- Space for dual batteries
- Under 12' exterior height to stay clear of low hanging limbs
- Entire underbelly enclosed to keep debris off tanks, water lines, etc.

## COUGAR OPTIONS

- Slide in/out bike/storage rack (except 1/2 ton series)\*
- Polar package (all TT and FW models)\*
- Hitch Vision\* (variations in truck size and user height may affect the mirrored image)
- Swivel rocker
- Second swivel rocker
- Free-standing dinette
- Hide-a-bed sofa
- Outside shower
- Spare Tire
- Oak refrigerator front
- Rear garage (301, 281, 314 - add 18" )\*

\* Mandatory option



Keystone RV  
Company



Keystone RV Company • 2642 Hackberry Dr., Goshen, IN 46526 • 574-535-2100 • [www.keystone-cougar.com](http://www.keystone-cougar.com)

## DARE TO COMPARE

- #1 selling fifth wheel in its class (4 years in a row)
- Highest trade-in and resale value in the industry on average
- Hitch Vision (patent pending) front cap with docking lights
- Exclusive factory installed bike/storage rack on all FW's and TT's (except on 1/2 Ton Series)
- Fully enclosed, sectioned underbelly with heated and enclosed dump valves
- 16.2 gallons per hour - quick recovery water heater (great for bunkhouses)
- Oversized pass-thru storage doors on both sides of each coach (with divider from front battery compartment)
- Slideout seal is mounted in a "T" track (no sticky tape to hold slide seals on)
- Cougar - Executive Chef Kitchen (see Cougar Standards for details)
- Easy access laundry chute (all models)
- Large storage drawer located under master bed (FW only)
- Porcelain - foot flush toilets
- Solid lambrquin leg window treatments with Day and Night Shades standard on all models
- Extra large picture window at all dinettes, slide-out windows open for cross ventilation
- Five side welded aluminum super structure
- R9 sidewall insulation, R14 floor and ceiling insulation and R15 astrofoil in the slideout
- Fully ducted air conditioning featuring triple insulated, foil wrapped, light

\*Product information and photography are as accurate as possible at the time of publication. Colors and finishes are photographic representations and may appear differently when viewing actual materials. Features shown are not available on all models. Some features shown are options. Features, prices and specifications are subject to change without notice. 11/05

Your Cougar Dealer: