

ENDEAVOR[®]
2010



HOLIDAY RAMBLER[®]

This is Living[®]



Endeavor



A POWERFUL EXPERIENCE.

Welcome to the 2010 Endeavor — the perfect combination of powerful performance and stylish comfort. On the road, you'll enjoy an exceptional driving experience in a luxurious cockpit with Ultraleather™ seats and a wide range of state-of-the-art features. Highlights include a color rear vision system and optional GPS navigation. In the living area, you'll feel right at home with spacious furnishings, designer carpeting, beautiful hardwood cabinet doors and decorative slide-out fascia.





YOUR SOFTER SIDE.

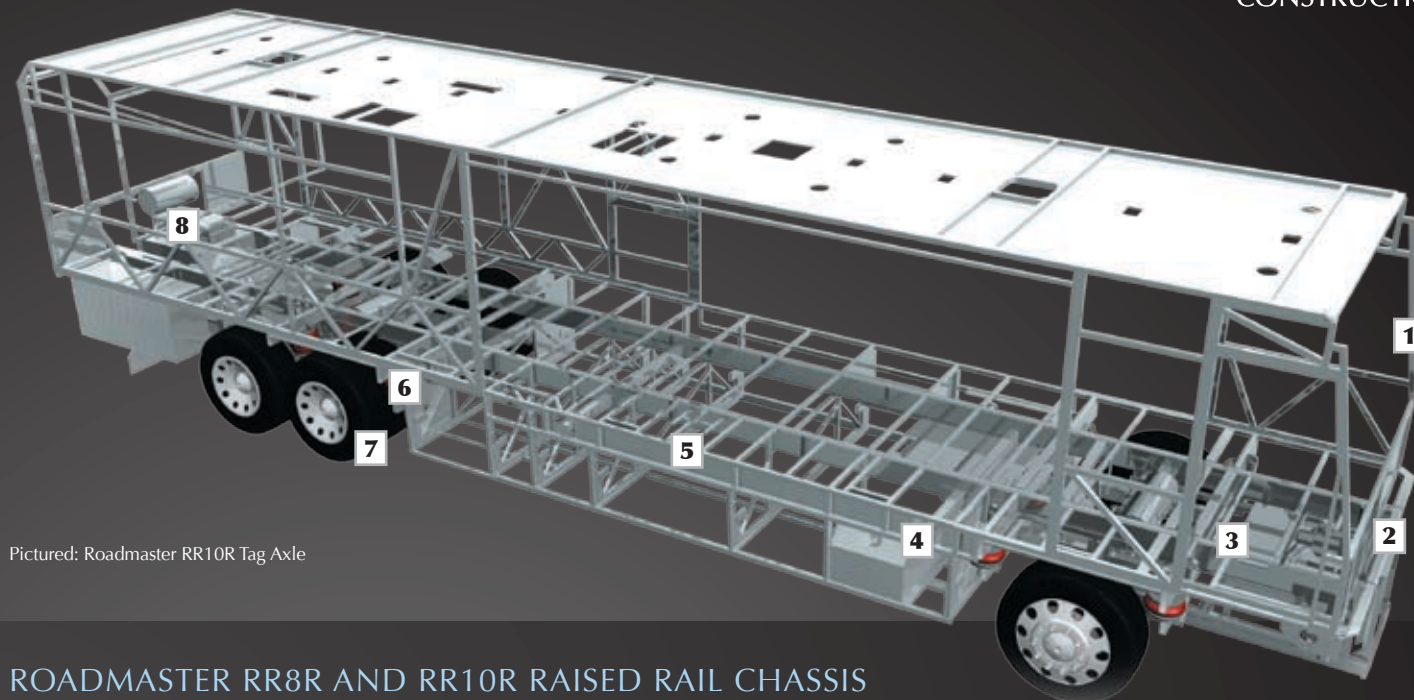
Let the Endeavor pamper you with its exquisite luxury and convenience. The kitchen features the distinctive styling of a polished radius solid surface countertop and a ceramic tile backsplash with decorative glass accents. The 42PAQ floor-plan offers a pullout countertop extension with drawer storage. Spacious comfort reigns in the

bedroom, too, with deep, 30-inch slide-outs and a queen bed or optional king on the 42 SKQ and 42PAQ. You'll also enjoy a 26-inch LCD TV and optional DVD player. The 42PAQ also boasts a bath-and-a-half layout with beautiful ceramic tile flooring, two solid surface vanities with integrated sinks and a large, one-piece shower.



THE ROADMASTER DIFFERENCE

Turn the key of the 2010 Endeavor and prepare to experience the best-in-class performance of the Roadmaster chassis. Roadmaster is the only chassis manufacturer with a 100 percent commitment to only producing chassis for luxury motorhomes. In fact, every Roadmaster chassis is custom built for the exact model and floorplan. That means you'll enjoy a smoother ride, superior front-to-rear balance and unbeatable strength and reliability. We encourage you to take a few minutes to learn more about the many features that put Roadmaster in a class by itself.



Pictured: Roadmaster RR10R Tag Axle



CUMMINS® ISL 425



For 2010, the Endeavor boasts a powerful new standard engine — the Cummins® ISL 425 HP with 1,200 lbs./ft. of torque. One word says it all. Vroom.

GETTING NOTICED.

You'll turn heads both on the road and at your destination with the Endeavor's stunning four-color, deluxe full-body paint. The impressive awning package features automatic patio and front door awnings. Polished aluminum wheels and a full-length Holiday Rambler mud flap add the perfect finishing touches. As you can see above, an optional slide-out tray helps you make the most of the coach's large pass-through storage bays.

ROADMASTER RR8R AND RR10R RAISED RAIL CHASSIS

(Roadmaster RR8R: 38PDQ; Roadmaster RR10R Tag Axle: 42SKQ, 42PAQ)

- 1** A steel cage cockpit gives the Roadmaster chassis incomparable strength and safety in the front of the coach.
- 2** Every Roadmaster chassis features a steel firewall for added protection in the cockpit.
- 3** The main rails feature an exclusive raised rail design which provides for larger full pass-through storage bays with flush floors. Other highlights include a 3/8" thick frame rail — compared to the 1/4" of other manufacturers — and a stacked aluminum intercooler and radiator for optimum heat transfer and cooling.
- 4** Dual fuel fill allows you to fill the tank from either side of the coach, for greater convenience and flexibility at the pump.
- 5** Truss System with Rust Inhibitor: This steel truss system is engineered as part of the chassis and provides outstanding strength and rigidity plus pass-through storage. In addition, the structure is pre-primed and coated with a rust-inhibiting paint.
- 6** Eight outboard-mounted air bags and eight shock absorbers on the 38PDQ, and ten air bags (eight outboard-mounted) and ten shock absorbers on the 42SKQ and 42PAQ.
- 7** Monitored leveling sensors continually adjust the air pressure at each axle to maintain a level ride and eliminate nosediving, weight transfer, and floating on curved roads. This system also stabilizes the coach on uneven surfaces.
- 8** The Endeavor features a gutsy standard Cummins® ISL 425 diesel engine with Allison® 3000 MH 6-speed World Transmission and electronic shifter.
- 9** Engine Mounting: The three-point engine mounting system lowers the coach's center of gravity and reduces the amount of vibration that reaches the coach. The mounting also makes the engine easier to service.
- 10** A 10,000 lb. tow hitch rating is the highest in its class.
- 11** Automatic Traction Control (ATC) eliminates wheel slippage in slick conditions and heightens control. The Anti-Lock Braking system (ABS) gives you superior stopping power, especially on steep grades. Together, these sophisticated systems offer the very best safety on the road.



9-LAYER ROOF CONSTRUCTION

(top to bottom)

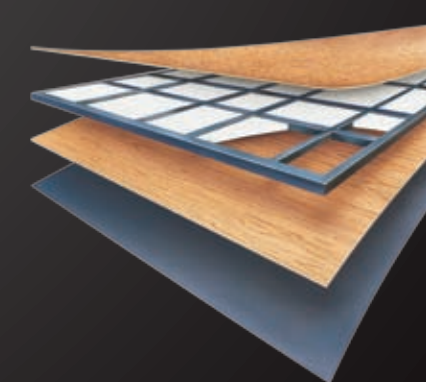
- One-piece peaked fiberglass roof
- Luaun backing
- Thick, tapered bead foam insulation
- Aluminum double I-beam superstructure filled with fiberglass insulation
- Vapor barrier
- Structure foam: thermal insulative barrier
- 1/2" bead foam insulation
- Foam padding for extra insulation
- Padded vinyl ceiling



5-LAYER FLOOR CONSTRUCTION

(top to bottom)

- Structurwood™
- 1-1/2" x 1-1/2" square tubular frame
- Blue foam
- Luaun
- 3-Ply Backer



COLORS AND PATTERNS IN PERFECT HARMONY.

Would you like to be in a win-win position when selecting the colors and patterns of your new 2010 Endeavor's exterior and interior décor? Leave it to the designers at Holiday Rambler to provide you with two of its most enticing exterior colors and interior décors

from which to choose. Select the one that fits your style — from warm and wonderful to cool and classic. Then, pair it all together with our popular solid wood Newport Cherry II cabinetry, and you've created a one-of-a-kind masterpiece all your own.



NEWPORT CHERRY II

UNMISTAKABLE QUALITY.

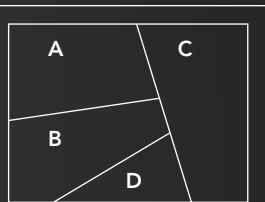
The hallmark of a Holiday Rambler is beautiful solid wood cabinetry with impeccable attention to detail. Raised panel doors provide a residential touch, while the decorative slide-out fascia trim adds elegance throughout the living areas. The storage spaces are as durable as they are attractive, with sturdy drawers and heavy-duty ball-bearing drawer guides.



RED CURRANT



MIDNIGHT GARDEN



- A. BEDSPREAD
- B. SOFA
- C. ACCENT
- D. CARPET

BODY CONSTRUCTION: FEATURES

- Steel Cage Cockpit Construction
- Smooth Gel Coat Fiberglass Exterior Walls
- Laminated Sidewall Construction
- Peaked One-Piece Fiberglass Roof with Fiberglass Insulation
- Panaview™ 1-Piece Front Windshield
- Pullout Generator Tray with One-Piece Door
- Electric Flush-Floor Stepwell Cover
- Chrome Dual-Head Power-Controlled Heated Exterior Mirrors with Turn Indicator Lights
- Side-Hinged Baggage Doors
- One-Piece Polyethylene Pass-Through Storage Compartment
- Slide-Out Battery Tray (N/A 38PDQ)
- Full-Length Mud Flap
- 3M Film Front Mask
- Deluxe Full-Body Paint
- Roof Ladder
- Undercoating

OPTIONS

- Full Pass-Through Storage Bay Slide-Out Tray (Complete Pass-Through)
- Standard Run Package: 3-Camera System, Full Pass-Through Slide-Out Tray, Central Vacuum, Power Cord Reel, RV Sani-Con System, Exterior Tank Monitor Gauges, Auto Gen Start

APPLIANCES AND ACCESSORIES: FEATURES

- Large 4-Door Refrigerator w/ Ice Maker
- High-Output 3-Sealed-Burner Cooktop without Oven
- 32" Flatscreen LCD TV in Front Cockpit Overhead (42PAQ Only)
- 37" Flatscreen LCD TV in Living Area Hutch (N/A 42PAQ)
- 26" LCD Color TV with Remote Control in Bedroom
- Home Theater System
- Curbside Exterior Patio Hookups for Cable, 110V Outlet, with Hatch Door to Exterior
- Digital Satellite System – Prep
- Cable TV Hookup and Phone Jacks
- Exterior Gas Line Hookup for LP Accessories

- Washer/Dryer Prep

OPTIONS

- High-Output 3-Sealed-Burner Range with Oven
- Dometic Sidewise 14 Cu. Ft. 2-Way Refrigerator with Ice Dispenser in the Door (N/A 38PDQ)
- Residential Stainless Steel Refrigerator (N/A 38PDQ)
- Stainless Steel Package: Includes Stainless Steel Refrigerator and Microwave (Not Available with Residential Refrigerator Option)
- Stainless Steel Microwave (42SKQ)
- Central Vacuum

- Combination Washer/Dryer
- Stackable Washer/Dryer (42SKQ)
- Bedroom DVD Player
- In-Motion Satellite (Does Not Include Receivers)
- Multi-Satellite HD Dish (Stationary Operation Only) (Does Not Include Receivers)
- Fireplace (42SKQ Only)
- Exterior Entertainment Center: 32" LCD TV with AM/FM/CD Radio with Two Speakers (N/A 42SKQ)
- High Definition Cinema Package: Sound Bar with DVD, Wireless Sub Woofer and Blue Ray Player (N/A 42SKQ)

CHASSIS/ENGINE/SUSPENSION: FEATURES

- Roadmaster Raised Rail RR8R-Series Chassis (38PDQ)
- Cushion Air Glide Suspension with Eight Outboard-Mounted Air Bags and Eight Shock Absorbers (38PDQ)
- Roadmaster Raised Rail RR10R-Series Chassis (42SKQ, 42PAQ)
- Cushion Air Glide Suspension with Ten Air Bags (Eight Outboard-Mounted) and Ten Shock Absorbers (42SKQ, 42PAQ)
- Tag Axle with Anti-Lock Brake System (42SKQ, 42PAQ)
- Cummins® 425 HP ISL Engine with Allison® 3000 MH 6-Speed World Transmission and Electronic Shifter
- Torque: 1,200 lbs./ft. Max. Net at 1,300 RPM
- Engine Displacement 538"/8.9L
- Aluminum Rear-Mounted Radiator with CAC Cooler
- Dual Fuel Fill
- 160 Amp Alternator
- Rear Axle Ratio: 4.30:1
- Prewire for Supplemental Braking System
- Polished Aluminum Wheels
- Anti-Lock Braking System with Full

- Air Brakes
- Automatic Traction Control
- Variable Geometry Turbo Exhaust Brake
- Automatic Hydraulic Leveling System
- 10,000 Lb. Hitch Receiver with Dual Connector 4-Pin or 7 Pin

INTERIOR: FEATURES

- Hardwood Cabinetry
- Polished Radius Solid Surface Kitchen Countertop with Solid Surface Sink with Two Sink Covers
- Pullout Countertop Extension with Drawer and Corian® Top (42PAQ Only)
- Kitchen Galley Backsplash: Ceramic Tile with Decorative Glass Accents
- All Other Countertops Polished Corian®
- Solid Surface Bathroom Countertop with Integrated Sink
- Ceramic Tile Flooring with 4" X 4" Accent Tile

- Designer Carpeting in Living Area and Bedroom
- Hardwood Slide-Out Fascia with Decorative Center Block
- Decorative Window Boxes throughout Coach
- Day/Night Pleated Blackout Shades in Living Area and Bedroom; EZ Lift Mini Blinds in Kitchen and Private Bath
- Soil Repellent Protection on Fabric
- Tile Entry Floor

OPTIONS

- Decors: Red Currant, Midnight Garden
- Full-Tile Living Room

COCKPIT: FEATURES

- In-Dash Driver's Message Center
- In-Dash AM/FM/CD Stereo Radio with Sirius-Ready Compatibility, Aux-In Connection, SD Card Slot and Weather Band
- Power Windshield and Manual Driver/ Passenger Solar Screens with Blackout Shades
- Adjustable Brake and Accelerator Pedals
- Color Rear Vision System
- Intermittent Windshield Wipers
- Lighted VIP Smartwheel® Multiplexed Steering Wheel with Controls for Windshield Wipers, ICC and Cruise Control
- Roof-Mounted Air Horn
- CB Prep
- Ultraleather™ Six-Way Power Pilot and Co-Pilot Seat with Power Footrest
- Color-Coordinated Carpeted Floor Mats

OPTIONS

- 3-Camera Rear Vision System
- GPS System
- Sirius Radio Satellite Tuner with Antenna
- 10-Disc CD Changer

FURNITURE: FEATURES

- Freestanding Dinette with Full-Length Wall Cabinet, Two Freestanding Chairs and Two Folding Chairs
- Roadside: Fabric Jackknife Sofa
- Curbside: Fabric Jackknife Sofa (42SKQ Only)
- Curbside: Fabric Loveseat (N/A 42SKQ)
- Queen Bed (60" x 80") with Solid Surface Nightstands

OPTIONS

- King Bed (72" x 80") with No Nightstands (42PAQ Only)
- King Bed (72" x 80") with Two Nightstands (42SKQ Only)
- Queen Bed Select Comfort Air Mattress
- King Bed Select Comfort Air Mattress (N/A 38PDQ)
- Roadside: Fabric Hide-A-Bed w/ Air Mattress
- Roadside: Ultraleather™ Jackknife Sofa
- Roadside: Ultraleather™ Hide-A-Bed with Air Mattress
- Roadside Ultraleather™ Booth Dinette

- Ensemble (42SKQ Only)
- Roadside: (2) Leather Euro-Recliners with Table (42SKQ Only)
- Roadside: Wraparound Computer Desk with Ultraleather™ Euro-Recliner (42SKQ Only)
- Curbside: Ultraleather™ Hide-A-Bed with Air Mattress (42SKQ Only)
- Curbside: Ultraleather™ Loveseat (N/A 42SKQ)
- Curbside: Ultraleather™ Easy Bed Sofa (42SKQ Only)

ELECTRICAL SYSTEMS AND LIGHTS: FEATURES

- 50 Amp 12V Distribution Panel and Power Cord
- Power Control System
- Onan® 8.0kW Quiet Diesel Generator on Manual Slide-Out Tray (38PDQ Only)
- Onan® 10.0kW Quiet Diesel Generator on Manual Slide-Out Tray (N/A 38PDQ)
- Four 6V Deep Cycle Batteries
- Two 12V Heavy-Duty Chassis Batteries
- Battery Disconnect Switch at Front Door
- Battery Boost Switch in Cockpit
- 2,000 Watt Inverter
- Recessed Docking Lights
- Porch Light and Exterior Step Light on Same Switch
- Lighted Interior Steps
- Lights in Outside Storage Compartments with Switch on Passenger Console and Utility Bay
- 110 Outlet in Outside Storage Compartment
- Underhood Utility Light
- Convenience Center in Hallway
- Prewire for Solar Panel

OPTIONS

- Auto Generator Start
- Solar Panel
- Power Cord Reel

PLUMBING AND LP SYSTEMS: FEATURES

- Demand Water System and Water Pump (42PAQ Only)
- 10-Gallon LP Gas/Electric Water Heater with Electronic Ignition DSI
- Single Lever Kitchen Faucet with Pullout Sprayer
- Bath Lavatory Faucet
- Central Water Filtration System
- Water Heater Bypass Valve
- Water Pump Switch in Kitchen Galley, Private Bath Wall and Service Bay Area
- China Toilet
- Silent Plus China Electronic Toilet
- Shower Inside Wet Bay with Hot/Cold Water
- Holding Tank Rinsing System
- Gravity and Pressurized Water Fill
- One-Piece Round Shower (42SKQ Only)
- One-Piece Rectangular Shower (38PDQ Only)
- One-Piece Neo-Angle Shower with Obscured Glass Door (42PAQ Only)
- Satin Nickel Shower Faucet w/ Slide Bar

OPTIONS

- RV Sani-Con Tank Drainage System
- Water Hose Reel
- Exterior Tank Monitor Gauge in Wet Bay
- Neo-Angled Bathtub (N/A 38PDQ)

HEATING, VENTS AND AIR CONDITIONING: FEATURES

- Dual 15M BTU Roof AC with Ducted Air, Heat Pumps, and Digital Thermostat Control (38PDQ Only)
- Dual 15M BTU and Single 13.5M BTU Roof AC with Ducted Air, Heat Pumps, and Digital Thermostat Control (42SKQ, 42PAQ)
- Dual Zone Electronic Ignition Furnaces: (1) 31M and (1) 20M BTU
- Electronic Dash AC/Heat Climate Control System
- Kitchen Powered 12V Attic Fan w/ Wall Control of Automatic Dome/Fan Power
- 12V Attic Fan in Private Bath with Wall Control of Auto Dome and Fan Power
- 12V Heater in Wet Bay

OPTIONS

- Ceiling Fan in Bedroom

SAFETY: FEATURES

- Fire Extinguisher
- Deadbolt Lock on Entrance Door
- 120V GFI Protected Circuit (Kitchen, Bath, Exterior)
- LP Gas Detector
- Smoke Detector
- Carbon Monoxide Detector
- Driver and Passenger Three-Point Seatbelts (Wall Mounted)
- Third Brake Safety Light
- Egress Window(s)

WINDOWS, DOORS AND AWNINGS: FEATURES

- Radius Flush-Mounted Dual Pane Safety Glass Dark Tinted Windows
- Front Entry Door with Removable Screen and Anti-Skid Steps
- Keyless Entry (Key Fob Only)
- Automatic Front Door Awning
- Topper Slide-Out Awnings Living Area and Bedroom
- Automatic Patio Awning
- Tinted Skylight in Bathroom with Protecta Glaze
- Window Awnings on All Slide-Out House Windows except Slide-Out Windows under Patio Awning

Due to continuous product improvements, visit www.holidayrambler.com for the latest in standards and options, specifications, and technical data.

Weights* (Lbs.)	38PDQ	42SKQ	42PAQ
Gross Vehicle Weight Rating	36,000	43,000	43,000
Gross Combined Weight Rating	46,000	53,000	53,000
Front Gross Axle Weight Rating	13,000	13,000	13,000
Rear Gross Axle Weight Rating	23,000	20,000	20,000
Tag Axle Weight Rating	N/A	10,000	10,000
Measurements			
Wheelbase	237"	261"	261"
Overall Length	39' 7"	43' 3"	43' 3"
Overall Height	12' 7"	12' 7"	12' 7"
Interior Height	84"	84"	84"
Interior Width	94.5"	94.5"	94.5"
Exterior Width	100.5"	100.5"	100.5"
Tank Capacities** (Gal.)			
Water Heater	10	10	10
Gray Tank	62	62	62
Black Tank	40	40	40
Fresh Tank	100	100	100
Fuel Tank	100	100	100
LP Tank ***	39	39	39

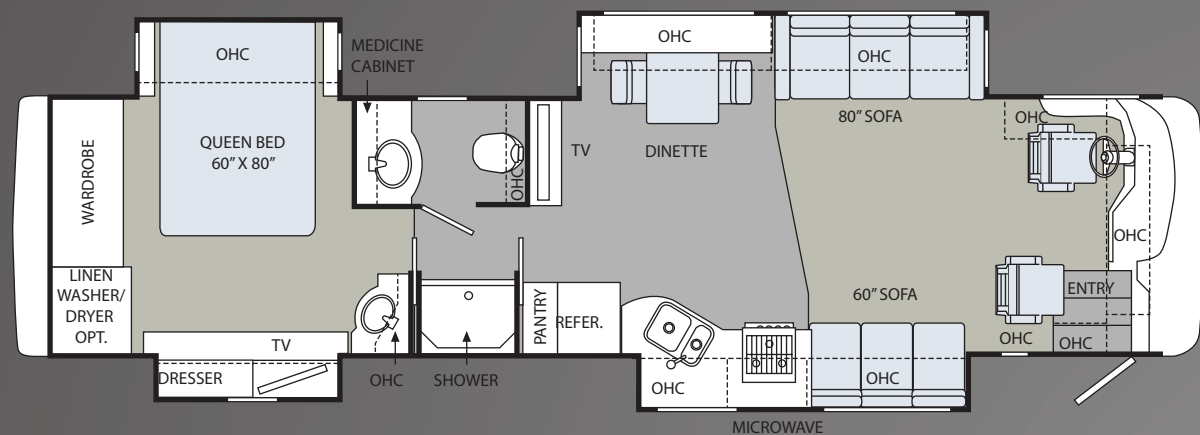
* Towing capacity is limited by GCWR; your vehicle's towing capacity is the difference between the GCWR and the actual vehicle weight, including all water, fuel, passengers and cargo. Your towed vehicle should be equipped with auxiliary brakes if the weight of the towed vehicle exceeds 1,000 lbs. Consult your owner's manual for further towing information.

** All tank capacities are estimated based upon calculations provided by the tank manufacturers and represent approximate capacities. The actual "usable capacity" may be greater or less than the estimated capacities based upon fabrication and installation of the tanks.

*** Actual filled LP capacity is 80% of listing due to safety shut-off required on tank.

The actual overall length of the recreational vehicle may differ from that indicated in the brochure due to variances in the manufacturing process and/or installed components. The actual length may be greater or less than that indicated. Due to the large variety of options and floorplan arrangements available to our customers, actual weights for each unit can differ significantly. Holiday Rambler provides a weight sticker on each unit we produce which includes that unit's tank capacities and approximate weight. Consult your local Holiday Rambler dealer for unit availability and further information. The information printed in this brochure reflects product design, fabrication, and component parts at the date of printing. The manufacturer reserves the right, at any time, to make changes in product design or material or component specifications as its sole option, without notice. This includes the substitution of components of a different brand or trade name which will result in comparable performance. All information printed in this brochure is subject to change after the date of printing. Some features shown or mentioned in this brochure are optional and may only be available in selected floorplans. Photographs may depict a floorplan option that has been discontinued or is no longer available at the time of your purchase. Photographs may show props or decorations that are not standard equipment. Holiday Rambler, the Holiday Rambler logo and its design, are registered trademarks. Other products and company names are trademarks and/or registered trademarks of their respective holders. While the color of the motorhome's exterior and the interior fabrics depicted in this sales brochure are fair and reasonable depictions, the colors depicted may not be an exact match of the actual colors because of the variances in photo-processing and printing. Due to product improvements, changes during the model year and/or transcription errors that may occur, information represented within this brochure may not be accurate at the time of your purchase. If certain information is significant to your purchasing decision, please confirm the information with your dealer. Component part and appliance manufacturers issue limited warranties covering portions of the recreational vehicle not covered under the Limited Warranties issued by Monaco RV, LLC. To learn specific details regarding warranty coverage, please contact your selling dealership or review the warranty packet inside the recreational vehicle.

38PDQ

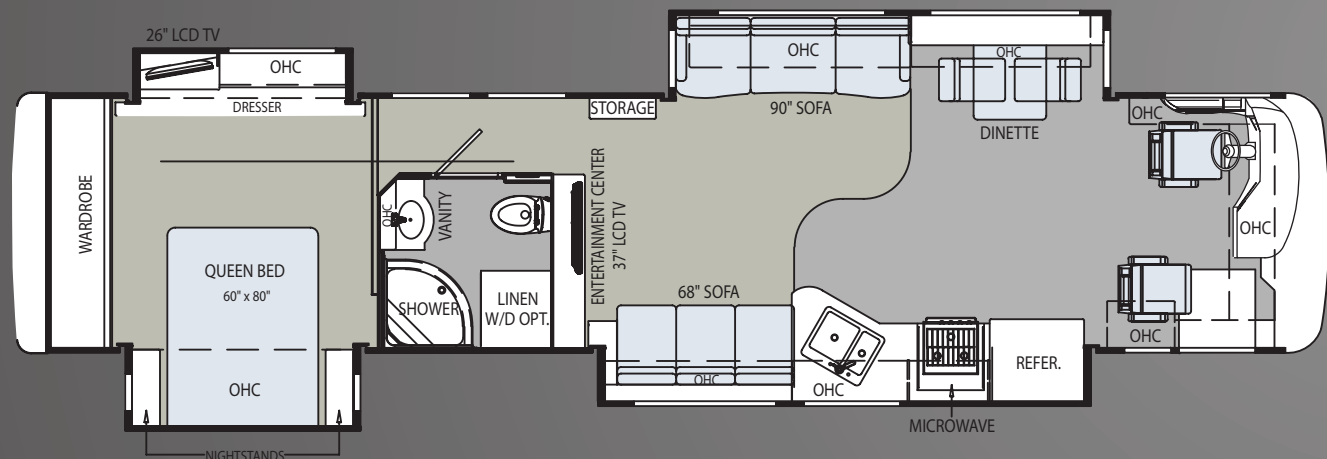


CARPET | TILE

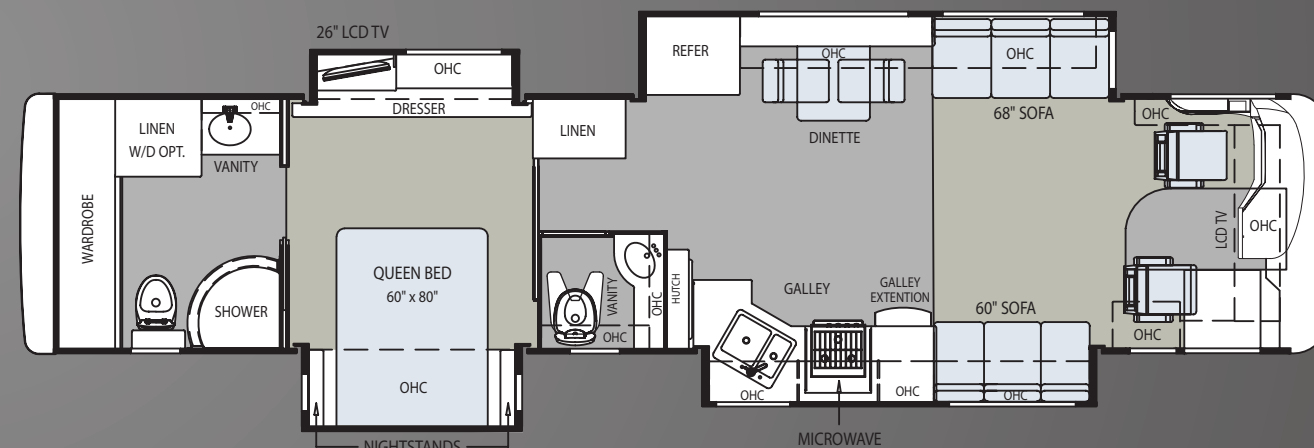
THE VIEW FROM ABOVE.

The 2010 Endeavor offers something for everyone, with overall lengths of 38 and 42 feet. All floorplans feature quad slide-outs for spacious living. Just a few points of interest include a bath-and-a-half layout and optional king bed on the 42PAQ, a front kitchen on the 42SKQ, and a large 37-inch flatscreen LCD television in the living area hutch on the 38PDQ and 42SKQ.

42SKQ



42PAQ



BUY LOCALLY. ENJOY EVERYWHERE.

Holiday Rambler strongly encourages our retail customers to purchase from their local dealerships whenever possible. Buying a new Holiday Rambler locally allows a customer to establish a relationship with a dealer close to home and provides convenient service and support from product-trained technicians. On our end, Holiday Rambler will continue to provide our dealer partners and customers with the finest recreational vehicles in the industry.

ALL ROADS LEAD TO WWW.HOLIDAYRAMBLER.COM

Wherever the road takes you, you're never more than a click away from your friends at Holiday Rambler. Just go to www.holidayrambler.com for all the latest product news, club dates and destinations, a dealer locator function, and factory tour information. You can also e-mail us directly through the site at any time.





HOLIDAY RAMBLER®

This is Living®

At Holiday Rambler, a brand of Monaco RV, it's our goal for all our customers to enjoy their RV experience from the beginning. We have forged strong, reliable relationships with our dealer partners, and we encourage our customers to do the same. We're proud to boast a network of over 350 dealership partners and service centers across North America. We're confident that this relationship will only enhance your RV experience and provide the added peace of mind you desire, so you can focus on the important stuff. After all, we're not just selling a world-class product, we're selling "fun." You can rest assured, Holiday Rambler and Monaco RV will be along for the ride, every mile your RV adventure takes you.

NAVIGATOR®



SCEPTER®



ENDEAVOR®



NEPTUNE®



ADMIRAL®



ARISTA®



ALUMA-LITE®



AUGUSTA™

