

 BEAVER 2005 PATRIOT®

ONE COACH AT A TIME.



YOURS.



 BEAVER 2005 PATRIOT®



*Detail by detail, we've created a home.*

As you step aboard the Patriot, the first thing you'll notice is its residential style living area. Countless distinctive touches add up to a



beautiful first impression. And this year, we've even raised the ceiling height and widened the hallways, giving the coach an open, spacious feel. You'll also notice the impeccable craftsmanship of the woodwork, featuring solid wood doors with colonial arch raised panels, hidden

hinges and adjustable shelves. Other details include newly styled hardwood slide-out trim, a new textured vinyl ceiling with

wood design, and a custom tile backsplash with creative inset accent design. You'll enjoy textured carpet or the optional sculptured carpet design shown here, and the coach's lighting is exquisite, with soft lighting in the living room ceiling and halogen lights under the overhead cabinets.







42' Richmond shown in Birds of Paradise decor with Cherry cabinets and Mappa Burl inlays.



42' Vicksburg shown in Birds of Paradise decor with Maple cabinets.

1

2



3

**1.** On most floorplans, the Patriot features a side-slide solid surface fixed dinette table. This adjustment allows the table top to move for additional space on either side. And with the addition of a leaf, there is seating for four people. **2.** Shown here is the living area in Paloma Picasso's Birds of Paradise decor with tile aisle from entry to kitchen and Maple woodwork. **3.** You'll love this optional 37" LCD TV that drops from the ceiling at the touch of a button. It makes the perfect companion to the exciting new home theater system with combination VCR/DVD player.



*The choice is yours.*



Beaver coaches have always been known for giving you more ways to create a coach that's distinctively your own. This year, the Patriot is available in five color schemes with stunning fabric combinations, including Birds of Paradise

by Paloma Picasso. In addition, you have your choice of a wide selection of innovative double, triple and quad slide-out floorplans, in lengths ranging from 37' to 42', with numerous furniture options to fit your lifestyle. Now, it's all up to you.

BETTER  
STAIN  
PROTECTION



Manufactured in, not added on. For added protection against stains, Dupont Teflon® soil repellent is applied to virtually all upholstery fabric during the finishing process for superior coverage.\*

\*Brand and application of upholstery fabric protection may vary depending on date recreational vehicle was manufactured.

*Patriot Designer Series "Birds of Paradise" by Paloma Picasso*

SOFA DINETTE BEDSPREAD CARPET



*"Silver Sable"*

SOFA DINETTE BEDSPREAD CARPET







*"Alpaca"*

SOFA

DINETTE

BEDSPREAD

CARPET



*"Sienna"*

SOFA

DINETTE

BEDSPREAD

CARPET



*"Spa Green"*

SOFA

DINETTE

BEDSPREAD

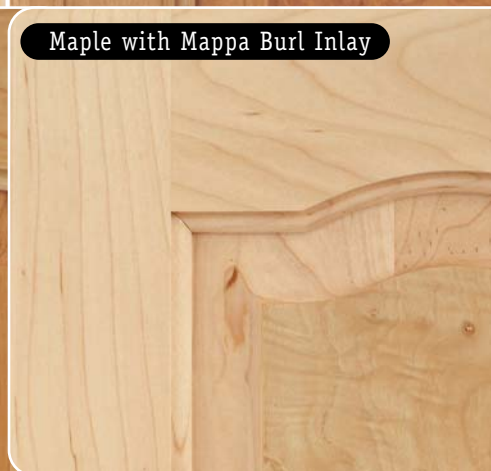
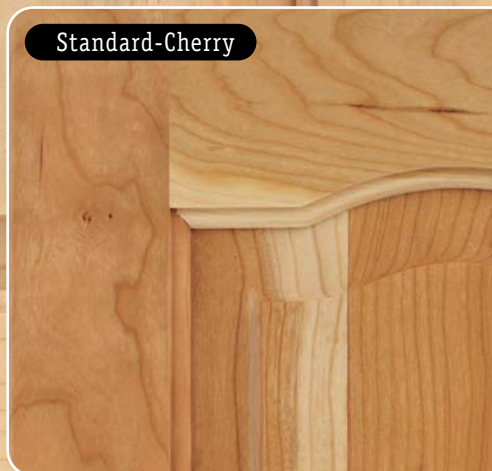
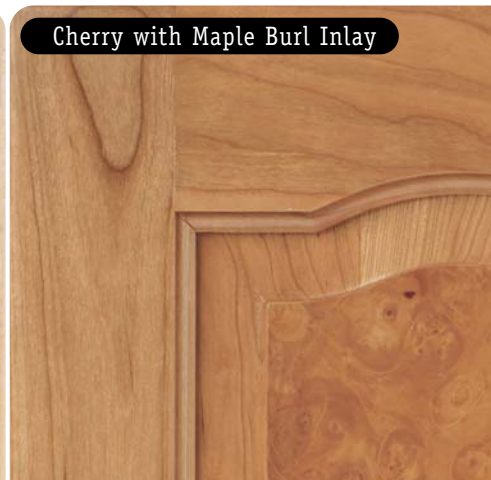
CARPET





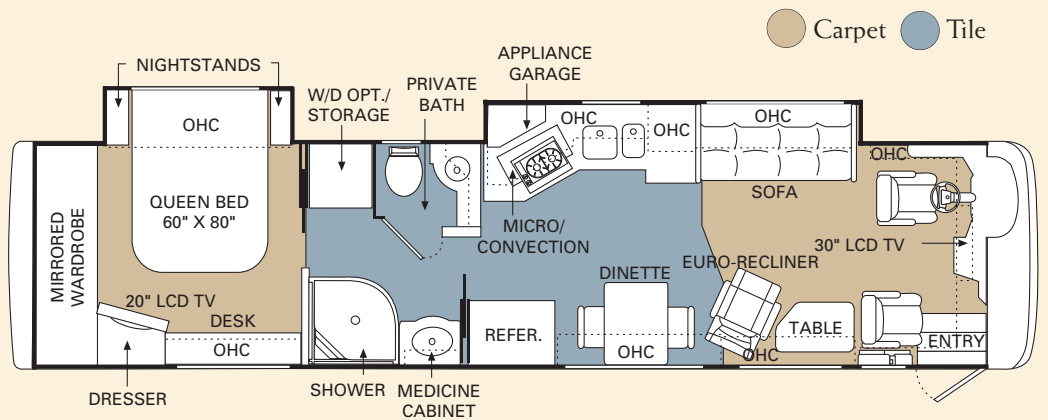
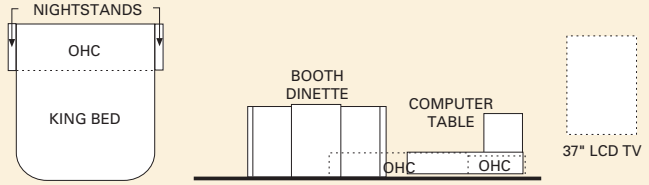
*The unmistakable craftsmanship of a Beaver coach.*

Our love affair with beautiful hardwoods from around the world continues to inspire the most stunning cabinetry you'll find anywhere. What you see here is the all natural character of our select woods, with no stains applied. This year we're offering a selection of new styles, including gloss finishes in Maple and Cherry, as well as optional cabinet door accents in Maple Burl, Mappa Burl, Makori and Bird's-Eye Maple.



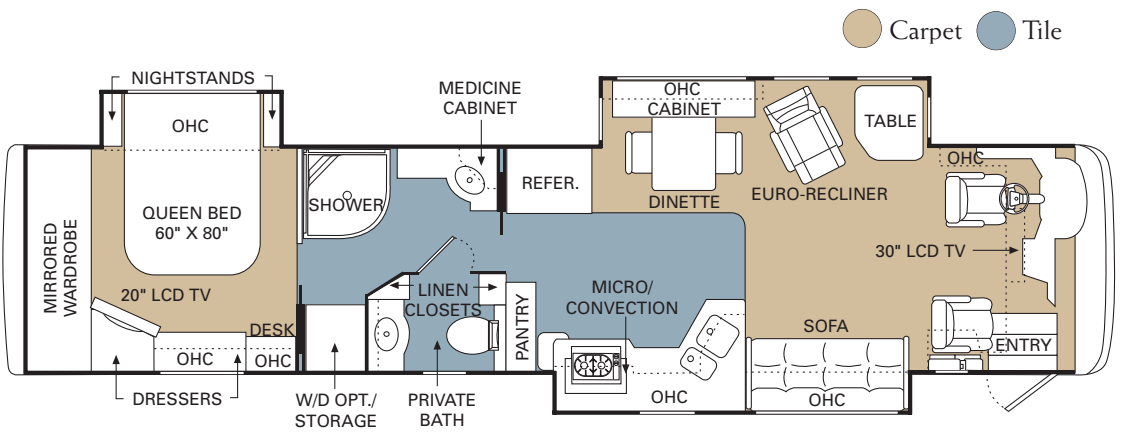
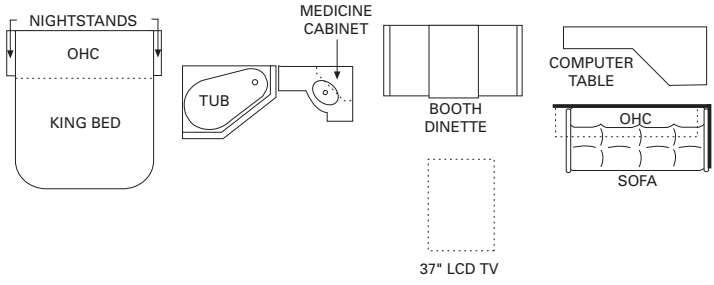
You can see the detailed craftsmanship of our solid wood colonial arch raised panel cabinet doors. By strictly managing and verifying the origins of our woods, we can ensure the consistency of grain, density and finishing characteristics — giving you the highest standards of quality. In short, it's all about our commitment to excellence and your pride in owning a Beaver coach.

# 2005 Patriot Floorplans & Options



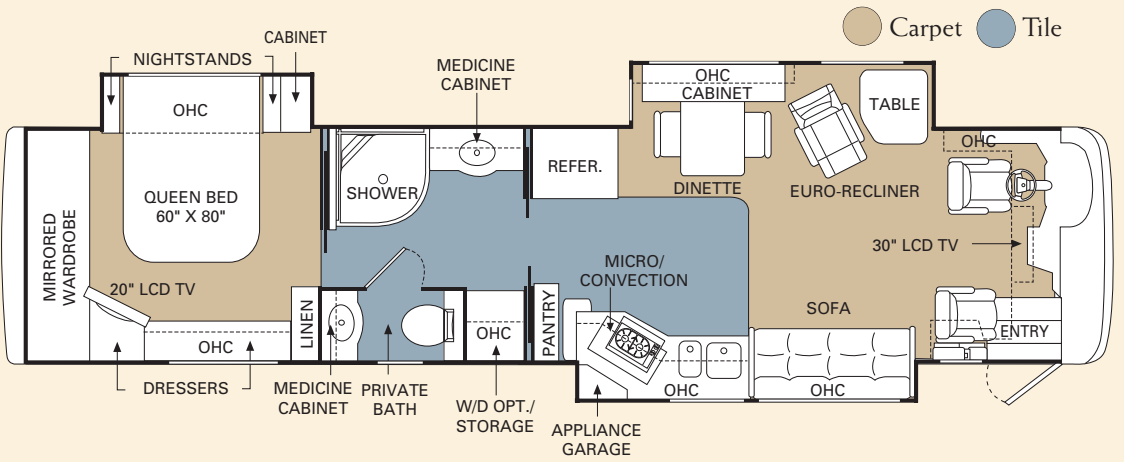
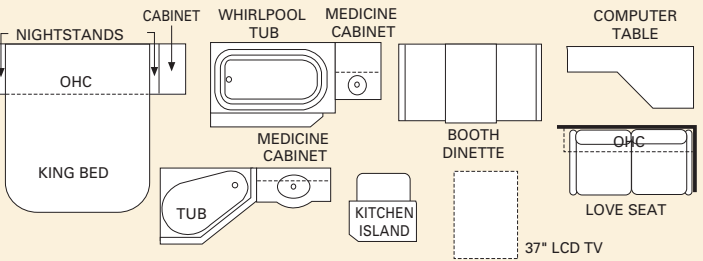
37' Ticonderoga

37' Ticonderoga Floorplan Options



40' Lexington

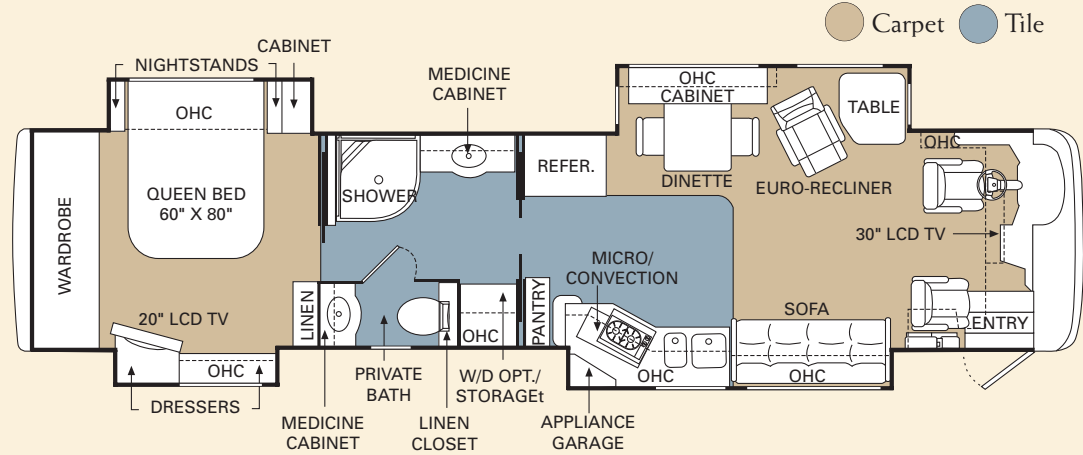
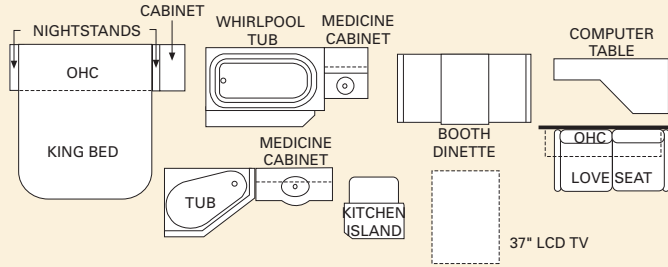
40' Lexington Floorplan Options



40' Yorktown

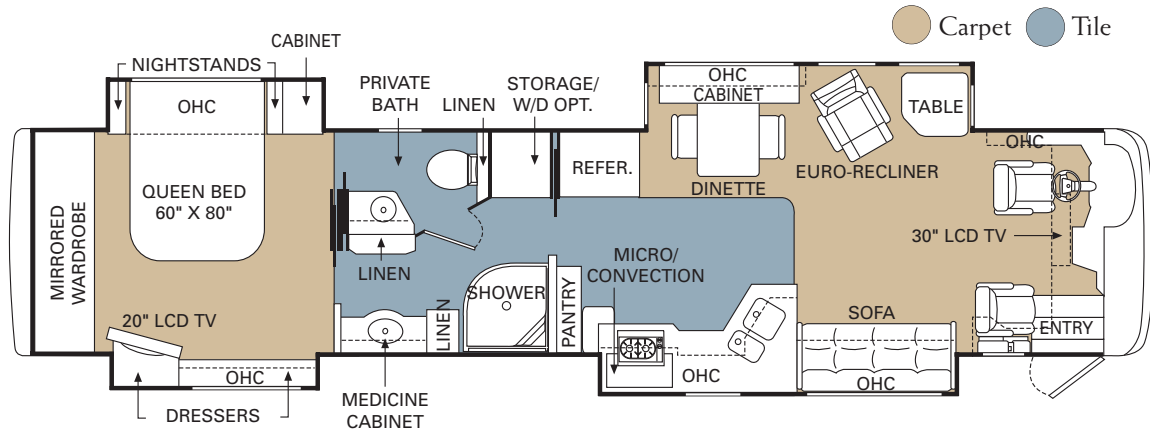
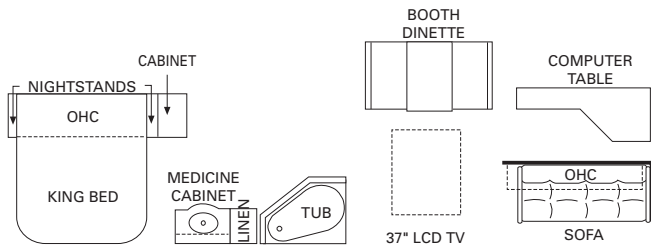
40' Yorktown Floorplan Options

2005 Patriot Floorplans & Options



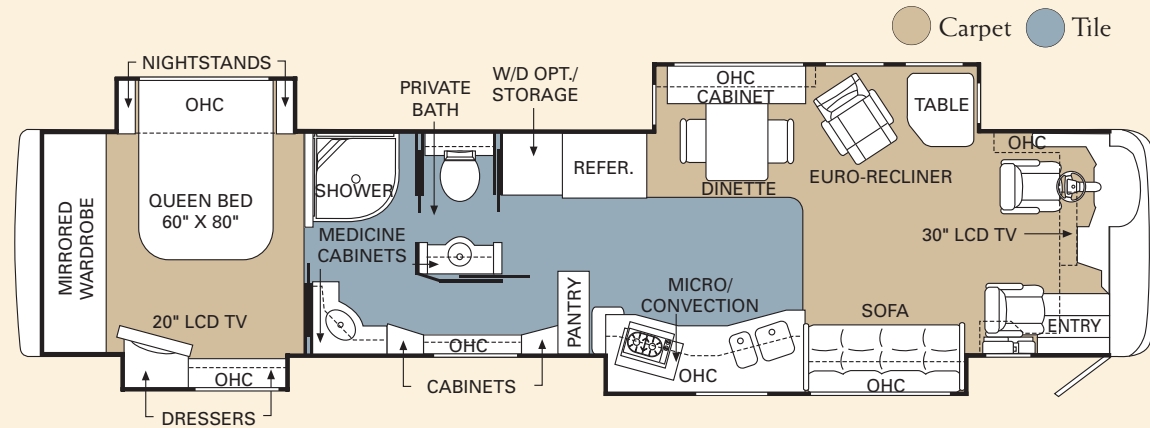
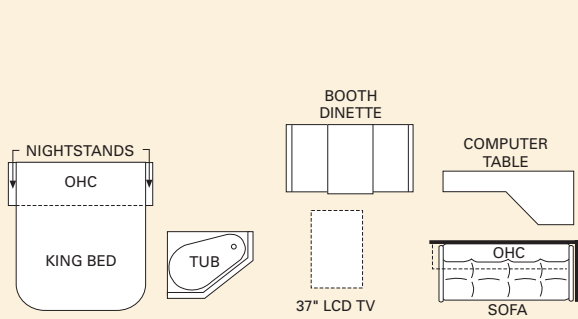
40' Wilmington

40' Wilmington Floorplan Options



42' Vicksburg

42' Vicksburg Floorplan Options



42' Richmond

42' Richmond Floorplan Options



## 2005 Patriot Specifications

### Body Construction

#### Standard Features

- Aluminum Framed Superstructure
- Seamless One-Piece Molded Crowned Fiberglass Roof
- Laminated Gel Coat Fiberglass Sidewalls
- All-Season Foam Insulated Roof
- One-Piece Front and Rear Molded Fiberglass Caps with Recess in Front Cap for Mirror Bases and Integrated Air and Turbo Intake in Rear Cap
- One-Piece Windshield
- Chrome Triple Head Power Controlled Heated Exterior Mirrors
- Aluminum Framed Laminated Floor on Steel Trusses
- Foam Insulated Underbelly
- Driving Lights
- Roof-Mounted Dual Trumpet Air Horns
- Insulated Aluminum Side-Hinged Baggage Doors under Passenger Side Front Slide-Out with Power Locks
- Storage Bays Extend with Slide-Out on Roadside
- Stationary Storage Bays on Passenger Side
- Carpet Lined Storage Compartments
- Full-Length "Beaver" Mud Flap
- Deluxe Full-Body Paint
- Chrome Rocker Trim
- Rear Ladder
- Power Entry Step
- Entry Step Storage

#### Options

- 3M® Film Front Mask
- Exterior Sun Screens
- One Manual Storage Bay Slide-Out Tray (One Side)

Two Manual Storage Bay Slide-Out Trays (One Side) (42' Models Only)

One Manual Storage Bay Slide-Out Tray (Full Pass-Thru)

### Chassis/Engine/Suspension

#### Standard Features

- Roadmaster M10S-Series Chassis (40' and 42' Models) or Roadmaster M8S-Series Chassis (37' Models)
- Caterpillar® 400 HP C-9 with Allison® 3000 MH 6-Speed Transmission with Electronic Shifter; 1100 lbs./ft. Torque Max. Net @ 1300 RPMs; 540"/8.8L Engine Displacement
- Rear Axle Ratio: 4.33:1
- 160 Amp Alternator
- Dual Fuel Fill
- Polished Aluminum Wheels
- Tires: 295/80R/22.5
- Cushion Air Glide Suspension with 10 Air Bags and 10 Shock Absorbers (8 Bags/8 Shocks on 37' Models)
- Anti-Lock Braking System with Full Air Brakes (Disc)
- Anti-Lock Braking System on Tag Axle (Drum) (40' and 42' Models)
- Auto Slack Adjusters
- Automatic Traction Control
- PAC Brake
- Fuel/Water Separator
- Air Cleaner Restriction Indicator
- Engine Block Heater with Switch on Dash
- Hydraulic Leveling System
- Engine Diagnostic Plug Added in Engine Area
- 10,000 Lb. Hitch Receiver and 7/4 Way Trailer Plugs

#### Options

- Dual Leveling System
- Air Leveling
- Caterpillar® 525 HP C-13 Engine with Thunder Package (See Thunder Specs Pg. 22)

### Cockpit

#### Standard Features

- Fiberglass Automotive Dash with Bird's-Eye Burl Instrumentation Panel, Tan Gauges with Black Lettering and Gun Metal Bezels
- Rear Vision System with Color Monitor
- In-Dash AM/FM Stereo with Multi-Disc CD Changer
- Aladdin™ Video Coach Systems Monitor with Audible Alarm Tone
- Adjustable Accelerator and Brake Pedals
- Multiplug in Dash Area
- Cup Holders
- Intermittent Windshield Wipers
- Audible Turn Signals
- Black VIP Lighted Smartwheel® with Controls for Windshield Wipers, ICC and Cruise Control
- Power Steering
- OptimaLeather™ 6-Way Power Pilot and Co-Pilot Seats with Power Footrest on Co-Pilot Seat
- Air Powered Front Entry Step Cover
- Carpet Pilot and Co-Pilot Floor Mats
- Power Sunvisors with Driver and Passenger Switches
- Manual Privacy Drapes

#### Options

- OptimaLeather™ Extra-Wide Co-Pilot Seat with Power Footrest
- Power Privacy Cab Drapes
- CB Radio
- Global Positioning System with DVD
- OnStar® Mobile Assistance (Requires Subscription)
- Sirius Satellite Stereo (Requires Subscription)
- Cellular Antenna and Wiring

### Appliances and Accessories

#### Standard Features

- Four-Door Refrigerator with Ice Maker and Raised Panel Doors
- High-Output Two-Burner Recessed Cooktop
- Convection Microwave with Touch Control
- 32" LCD TV with Remote in Living Area
- 20" Flatscreen Color TV with Remote Control in Bedroom
- Power TV Antenna and Booster
- DVD/VCR/Home Theater Combo System in Living Area
- VCR/DVD Combo Unit in Bedroom
- Prep for Satellite Receiver
- Cable TV Hook-Up and Telephone Jacks
- Combination Washer/Dryer Prep

#### Options

- Combination Washer/Dryer
- 37" LCD TV in Living Area Ceiling
- Stainless Steel Refrigerator
- Stainless Steel Microwave
- Fully Automatic Digital Satellite System with Receiver in Living Area and Bedroom
- Fully Automatic In-Motion Digital Satellite System with Receiver in Living Area and Bedroom
- Universal Remote System

### Interior

#### Standard Features

- Maple Gloss Finish Cabinetry
- Solid Wood Colonial Arch Raised Panel Cabinet Doors with Hidden Hinges
- Carpet Lined Cabinet Shelves
- Low Friction Roller Drawer Guides
- Textured Vinyl Ceiling with Wood Design
- Wallpaper with Chair Rail in Living Area
- High Gloss Solid Surface Galley Countertop with Integrated Solid Surface Sink

High-Gloss Solid Surface Bath  
Countertop with Solid Surface Edge  
and Integrated Sink

Solid Surface and Tile Galley Backsplash  
Solid Surface and Mirror Vanity Backsplash

Large Pot and Pan Drawer in Kitchen Area

Appliance Garage on Kitchen Countertop  
(N/A: 42' Vicksburg, 42' Richmond)

Cutting Boards in Kitchen

Built-In Storage Area for Kitchen  
Countertop Covers

Cedar-Lined Wardrobe Closet with Mirrored  
Wardrobe Doors

Medicine Cabinet

Bathroom Vanity Mirror

Decorative Hardwood Slide-Out Fascia Trim

Decorative Solid Mirror with Beveled Edges  
on Refrigerator Wall

Bedroom Dresser

Bedspread with Pillows

Day/Night Shades Throughout with  
Blackout Shades, Bedroom

Mini Blinds in Kitchen and Bathroom

Textured Carpet in Living Area  
and Throughout

Ceramic Tile Border Accent in Kitchen

Ceramic Tile in Entry, Kitchen and  
Bath Area

### Options

Decors: Sienna, Alpaca, Spa Green,  
Silver Sable

Paloma Picasso Decor: Birds of Paradise  
with Tile Aisle from Entry to Kitchen

Gloss Finish Cabinetry Choices: Cherry

Maple Burl Accent Cabinet Door Inserts  
with Cherry Cabinetry

Mappa Burl Accent Cabinet Door Inserts  
with Cherry and Maple Cabinetry

Makori Accent Cabinet Door Inserts  
with Cherry Cabinetry

Bird's-Eye Maple Accent Cabinet Door  
Inserts with Maple Cabinetry

Manual Roman Shades

Sculptured Carpet Design in Living Area

## Furniture

### Standard Features

Queen Mattress

Sleeper Sofa with Drawer (Roadside:  
37' Ticonderoga; Curbside: All Others)

OptimaLeather™ Euro-Recliner with  
Ottoman (Curbside: 37' Ticonderoga;  
Roadside: All Others)

Solid Surface Fixed Living Area Table

Solid Surface Fixed Dinette Table with  
Two Freestanding Dinette Chairs and  
Two Folding Chairs (37' Ticonderoga)

Side-Slide, Solid Surface Fixed Dinette  
Table with Two Freestanding Dinette Chairs  
and Two Folding Chairs  
(N/A: 37' Ticonderoga)

### Options

King Bed

OptimaLeather™ Recliner

OptimaLeather™ Love Seat with Drawer

OptimaLeather™ L-Sofa with Drawer

OptimaLeather™ Sofa with Drawer

OptimaLeather™ Hide-a-Bed

Fabric Hide-a-Bed

Air Mattress for Hide-a-Bed

Wraparound Computer Table  
(Requires Recliner)

Booth Dinette

Kitchen Island (40' Yorktown, 40' Wilmington)

## Electrical Systems and Lights

### Standard Features

50 Amp 120/240V Distribution Panel and  
Power Cord with Quick Disconnect

Locking Battery Disconnect Switch  
inside Coach

Battery Disconnect Switch in  
Battery Compartment

Onan® 10.0 kW Quiet Diesel Generator  
on Power Slide-Out Tray with Auxiliary  
Start Switch

Integrated Surge Supression

2,500 Watt Inverter with Remote

Solar Panel with Regulator

Solar Connector with Regulator

Two 12V Deep Cycle Chassis Batteries

Four 6V Deep Cycle Coach Batteries

Lights in Outside Storage Compartment

120V Receptacle in Storage Compartment

Recessed Stepwell Lights

Decorative Lighting in Bedroom and  
Living Area

Cosmetic Vanity Light

Halogen Lights in Dinette Area

Halogen Lights under Overhead Cabinets

Halogen Lights in Living Area Ceiling

Fluorescent Light in front of Refrigerator,  
Bath Area and Bedroom

110V Recept in Bed Base

Computer Hook-Up with Phone Jack at  
Dinette Area

Pilot/Co-Pilot Map Lights

Porch Light

### Options

Pure Sine Wave Inverter

## Plumbing and LP Systems

### Standard Features

Manifold Water Control System

Kitchen Faucet with Pull-Out Sprayer

Water Pump Switches in Galley, Bath  
and Water Bay

Water Purifier for Icemaker

China Toilet

No-Fuss Flush Black Holding Tank  
Rinsing System

Sewer Hose Connection inside Plumbing  
Manifold Center

Insulated Systems Compartment with Easy  
Access to Hook-Ups

Water Sprayer in Outside Bay

Power Water Hose Reel

Pressurized Water Fill

Soap Dispenser in Vanity

Handheld Shower with Slide Bar

Granicoat Shower with Shelf for  
Soap and Shampoo

### Options

Garden Tub (N/A: 37' Ticonderoga)

Whirlpool Tub (40' Yorktown,  
40' Wilmington)

## Heating, Vents and Air Conditioning

### Standard Features

Two Low-Profile Ducted 15M BTU Roof Air  
Conditioners with Heat Pumps  
(N/A: 42' Vicksburg, 42' Richmond)

Three Low-Profile Ducted 15M BTU Roof Air  
Conditioners with Heat Pumps  
(42' Vicksburg, 42' Richmond)

Aqua-Hot® Heating System

Electronic Air Conditioning/Heat  
Climate Control System

Dash Heating and Air Conditioner System  
with Defroster

12V Attic Fan with Sensor and Wall Switch  
in Kitchen, Bath and Vanity Area

### Options

Two Low-Profile 110V Baseboard Heaters

## Windows, Doors and Awnings

### Standard Features

Radius Dual Pane Safety Glass Dark Tinted  
Slider Windows

Front Entry Door with Removable Screen

Keyless Entry System with Pocket Remote

Tinted Skylight in Bathroom

Automatic Patio Awning with  
Color-Coordinated Hardware

Slide-Out Topper Awnings

Window Awning over Passenger Side  
Bedroom Window with Color  
Coordinated Hardware

Automatic Front Door Awning

### Options

Remote Controlled Girard® Automatic Patio  
Awning with Wind Sensor



# Safety

## Standard Features

- Fire Extinguisher
- Back-Up Alarm
- Deadbolt Lock on Entrance Door
- Lighted Interior and Exterior Grab Handles
- 120V GFI Protected Circuit (Kitchen, Bath, Exterior)
- LP Gas Detector
- Smoke Detector
- Carbon Monoxide Detector
- Integrated Pilot and Co-Pilot Three-Point Seat Belts
- Third Brake Safety Light
- Egress Window(s)

## Options

- Deluxe Security System
- Security Safe



## Thunder Package Standard Features

- Deluxe Full Body Paint with Thunder Logos Painted on Front and Rear Caps
- Caterpillar® 525 HP C-13 and Allison® 4000 MH 6-Speed Transmission with Electronic Shifter; 1650 lbs./ft. Torque Max. Net. at 1200 RPMs; 12.5 Liter
- Jacobs Engine Brake
- CB Radio
- Two Tone Leather VIP Lighted Smart Wheel with Controls for Windshield Wipers, ICC and Cruise Control
- 6-Way Power OptimaLeather™ Pilot and Co-Pilot Seat with Adjustable Headrests, Colored Pleats and Thunder Logo
- Residential Refrigerator
- Tapered Corian® Splash Guard
- Sleeper Sofa with Drawer and Footrest
- Solid Surface Shower with Corian Shower Caddy and Plumbing Access Cover in Granicoat Base

- Beige Grid Finish Instrumentation Panel
- Modified Exterior Graphics

## Options

- Electric Slide-Out Storage Tray (Full Pass-Through)
- Queen Air Mattress with Remote
- King Air Mattress with Remote
- SEE-Vision Security Camera System
- Collision Avoidance System
- Stainless Residential Refrigerator

## Weights

### Gross Vehicle Weight Rating (Lbs.)

37' Ticonderoga	36,300
40' Lexington	46,300
40' Yorktown	46,300
40' Wilmington	46,300
42' Vicksburg	46,300
42' Richmond	46,300

### Gross Combined Weight Rating\* (Lbs.)

37' Ticonderoga	46,300
40' Lexington	56,300
40' Yorktown	56,300
40' Wilmington	56,300
42' Vicksburg	56,300
42' Richmond	56,300

### Front Gross Axle Weight Rating (Lbs.)

37' Ticonderoga	15,300
40' Lexington	15,300
40' Yorktown	15,300
40' Wilmington	15,300
42' Vicksburg	15,300
42' Richmond	15,300

### Rear Gross Axle Weight Rating (Lbs.)

37' Ticonderoga	21,000
40' Lexington	21,000
40' Yorktown	21,000
40' Wilmington	21,000
42' Vicksburg	21,000
42' Richmond	21,000

## Tag Gross Axle Weight Rating (Lbs.)

37' Ticonderoga	N/A
40' Lexington	10,000
40' Yorktown	10,000
40' Wilmington	10,000
42' Vicksburg	10,000
42' Richmond	10,000

## Measurements

### Wheelbase

37' Ticonderoga	238"
40' Lexington	263-11/16"
40' Yorktown	263-11/16"
40' Wilmington	263-11/16"
42' Vicksburg	286-11/16"
42' Richmond	286-11/16"

### Overall Unit (Length)(Width)(Height)\*\*

37' Ticonderoga	37' 10"	102"	12'4"
40' Lexington	40' 10"	102"	12'4"
40' Yorktown	40' 10"	102"	12'4"
40' Wilmington	40' 10"	102"	12'4"
42' Vicksburg	42' 10"	102"	12'4"
42' Richmond	42' 10"	102"	12'4"

(\*\* Includes Roof Air Conditioner)

### Interior Height

All Patriot Models	81"
--------------------	-----

## Tank Capacities

### Gray Tank

All Patriot Models (62 Gal. Actual)	58 gal.
-------------------------------------	---------

### Black Tank

All Patriot Models	58 gal.
--------------------	---------

### Fresh Tank

All Patriot Models	100 gal.
--------------------	----------

### Fuel Tank

All Patriot Models	148 gal.
--------------------	----------

### LP Tank\*\*\*

All Patriot Models	29 gal.
--------------------	---------

\* Towing capacity is limited by GCWR; your vehicle's towing capacity is the difference between the GCWR and the actual vehicle weight, including all water, fuel, passengers and cargo. Your towed vehicle should be equipped with auxiliary brakes if the weight of the towed vehicle exceeds 1,000 lbs. Consult your Owner's Manual for further towing information.

\*\*\* Actual filled LP capacity is 80% of listing due to safety shut off required on tank.

All tank capacities are estimated based upon calculations provided by the tank manufacturers and represent approximate capacities. The actual "usable capacity" may be greater or less than the estimated capacities based upon fabrication and installation of the tanks.

Due to the large variety of options and floorplan arrangements available to our customers, actual weights for each unit may differ. Beaver Motor Coaches provides a weight sticker on each unit we produce, which includes that unit's tank capacities and approximate weight. Consult your local Beaver Motor Coaches dealer for unit availability and further information. The information printed in this brochure reflects product design, fabrication, and component parts at the date of printing. The manufacturer reserves the right, at any time, to make changes in product design, material or component specifications as its sole option, without notice. This includes the substitution of components of a different brand or trade name, which will result in comparable performance. All information printed in this brochure is subject to change after the date of printing. Some features shown or mentioned in this brochure are optional and may only be available in selected floorplans. Photographs may show props or decorations that are not standard equipment on Beaver Motor Coach models. Beaver Motor Coaches, the Beaver logo and its design, are registered trademarks. All other products and company names are trademarks and/or registered trademarks of their respective holders.

The actual overall length of the recreational vehicle may differ from that indicated in the brochure due to variances in the manufacturing process and/or installed components. The actual length may be greater or less than that indicated.