



# Wildwood **LODGE GRAND LODGE** DLX

Wildwood **LODGE GRAND LODGE**  
DLX



THE QUALITY YOU EXPECT. THE LUXURY YOU DESERVE.

# go wild





**Wildwood**  
**DLX**

DESTINATION TRAILER, 39FDEN SHOWN IN SOAPSTONE DECOR  
optional free standing dinette and La-Z-Boy recliner



## 39FDEN & 426-2B

### FAMILY ROOM

An inviting camper for your family's long term stays. The 426-2B (pictured) is designed with a private bunk room, 84" interior heights with 6'2" slide outs, and a U-shaped dinette!

### HOME SWEET HOME

Wildwood DLX comes outfitted with residential raised panel cabinetry, sliding glass entry doors, and an 18 cu. ft. refrigerator to make you feel right at home!

DESTINATION TRAILER 426-2B SHOWN IN TUSCAN DECOR  
optional TV



DESTINATION TRAILER 426-2B BUNKROOM



DESTINATION TRAILER 426-2B BEDROOM





**LODGE**

DESTINATION TRAILER 394FKDS SHOWN IN LA-Z-BOY COGNAC LEATHER DECOR



## 394FKDS

### THE GREAT ESCAPE

Get the night's sleep you dream of on our Serta Dreamscape mattress with comfort flex bed frame (Lodge and Grand Lodge)!

### STAY A WHILE

Pack for extended stays with the added wardrobe and drawer space provided in our bedrooms!

### RESIDENTIAL

The 394FKDS floorplan design will accommodate your friends and family with its huge kitchen and spacious living area!



DESTINATION TRAILER 394FKDS BEDROOM



DESTINATION TRAILER 394FKDS KITCHEN



# GRAND LODGE

DESTINATION TRAILER 408REDS SHOWN IN LA-Z-BOY SLATE DECOR  
optional TV



## 408REDS

### ENJOYABLE

The 408REDS (pictured) displays our La-Z-Boy Slate sofa with optional La-Z-Boy recliners. The La-Z-Boy furniture options provided in our Wildwood DLX and Lodge line of campers brings residential and quality furniture right to your camper!

### UPGRADES

The Wildwood Grand Lodge upgrades your camper to 8' interior heights, cathedral slide outs with skylights in main slide room, and three ceiling fans throughout the coach!



DESTINATION TRAILER 408REDS KITCHEN

## DLX STANDARDS AND OPTIONS, FEATURES AND FABRICS

### COMFORT AND CONVENIENCE

84" interior height  
 Black framed tinted safety glass windows  
 Powered self supporting slide rooms  
 Pleated night shades  
 Triple sealed slide outs  
 Water heater by-pass  
 16-gallon per hour quick recovery DSI water heater  
 Large pass thru storage (per floorplan)  
 Ducted Dometic® 13,500 BTU central air conditioner w/ quick cool feature  
 In-floor ducted heat w/ 35K BTU furnace  
 Stain resistant carpet with padding  
 Flush-floor slide rooms  
 Systems monitor panel  
 6' 2" tall slide rooms  
 Ultra lube axles  
 Solid wood drawer fronts with ball bearing drawer guides  
 2 outside speakers  
 Beauflor™ Durabac flooring w/ 7 yr. limited warranty

### KITCHEN

Extra large overhead cabinets  
 Raised panel overhead cabinet doors  
 18.5 cu. ft. residential refrigerator with ice maker  
 12-volt power range hood w/ light  
 Microwave w/ carousel  
 Acrylic 60/40 residential style kitchen sink  
 Built in knife holder behind stove  
 3 burner Piezo ignition range oven  
 Pull out sprayer faucet at kitchen sink  
 Kitchen waste basket  
 Pantry with shelves

### LIVING ROOM

Swivel rocker chair (per floorplan)  
 Jensen™ DVD/CD/AM/FM stereo w/ mp3 hook-up  
 Cathedral ceiling w/ ceiling fan  
 Surround sound w/ TV hook-up  
 Digital TV antenna w/ booster  
 Cable and satellite ready  
 Extra large picture window at dinette  
 Extra large dinette for more comfortable dining and sleeping  
 Decorative lights in slide-out

### BEDROOM

Serta Bradley mattress  
 Fitted bedspreads and headboard  
 Lift-up beds w/ gas struts  
 Cable TV hook-up  
 Stain resistant carpet w/ padding  
 Solid privacy doors

### BATHROOM

Built-in wood medicine cabinet and mirror  
 Ceiling light w/ convenient wall switch  
 Foot flush toilet(s)  
 ABS tub or shower w/ one-piece

### EXTERIOR

Smooth fiberglass radius baggage doors w/ thumb pulls and holdbacks  
 Cold crack and mildew resistant vinyl patio awning  
 Diamond plate rock guard  
 Patio door w/ screen  
 Steel framed 30" smooth fiberglass radius entry door  
 15" radial tires  
 Entry assist handle  
 2-30 lb. LP tanks w/ automatic change over & EZ access LP cover  
 City water fill

### CONSTRUCTION

10" Extruded I-beam frame  
 Cambered chassis  
 Fresh water tank  
 2" x 3" floor joists 12" on center  
 5/8" 5-ply tongue and groove plywood floor decking  
 2" wall studs maximum 16" on center  
 5" bowed truss roof rafters  
 3/8" walk-on roof decking  
 R-7 insulation

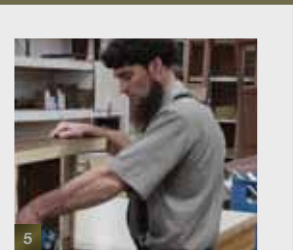
### SECURITY AND SAFETY

Smoke detector  
 Fire extinguisher  
 Carbon monoxide detector  
 LP gas leak detector  
 Amber porch light w/ interior switch  
 Screen door w/ safety latch  
 GFI receptacles and covered patio outlet  
 Welded heavy duty safety chains  
 Hitch light  
 Lockable fiberglass radius baggage doors  
 ANSI 119.5  
 Certified to meet all national highway traffic safety administration specs.

### WILDWOOD OPTIONS

Gel coat fiberglass exterior  
 10-gallon gas/electric DSI water heater  
 Skylight over tub  
 Air hide-a-bed sofa  
 Outside kitchen (402QBQ only)  
 Free standing dinette w/ 4 chairs  
 Outside shower

Contact your Wildwood DLX dealer for a complete list of options.



TUSCAN DECOR



SLATE DECOR



COGNAC LEATHER DECOR



SOAPSTONE DECOR



### INTERIOR FEATURES

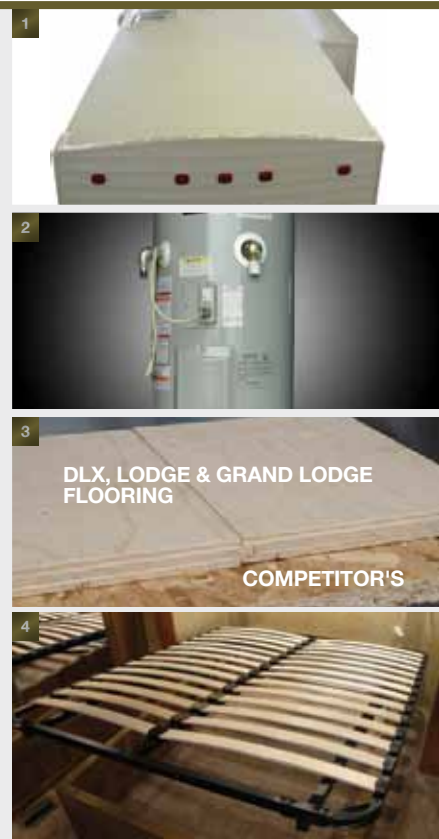
1: Serta Bradley mattress 2: Residential 18.5 cu. ft. refrigerator with ice maker 3: Exterior marine grade speaker 4: Cloth shades 5: Rest assured your unit is built with pride and integrity by our dedicated team of craftsman





Form follows function. At Wildwood Lodge, your satisfaction is serious business and it shows. Our commitment to your satisfaction includes:

- 1: A one piece seamless roof with 12 year warranty
- 2: 20 gallon water heater (Lodge and Grand Lodge)
- 3: The floor in Wildwood is 5/8" tongue and groove plywood. Most of our competitors use OSB board which is not as durable as our real wood floor.
- 4: Comfort Flex bed frame (Lodge and Grand Lodge)



## CONSTRUCTION THAT'S BUILT TO LAST

Our floorplans offer your family an inviting campsite home! With spacious interior heights, deep slides and accommodating dinette seating, Wildwood values the meaning of family room! Adequate storage throughout the interior and exterior of your coach allow for you to pack comfortably. The desired features on the inside of our units are equally matched by the well-built construction! Wildwood units are constructed to last for many years of enjoyment and memories. Take a look inside the Wildwood and see why it is one of the most **DEPENDABLE** RV's on the road today!

- A Radius triple entry steps
- B 102" exterior width for increased living space (96"DLX)
- C Tinted windows
- D Hitch light
- E Standard patio door
- F 15" radial tires (16" w/ optional fiberglass exterior)
- G 12" I-beam powder coated plywood flooring
- H 5/8" tongue and groove plywood flooring
- I Carpet w/ padding
- J Fender skirt
- K 2" wall studs 16" on center
- L 2"x 3" floor joists 12" on center
- M 15K BTU A/C (13.5K on DLX)
- N Seamless one piece roof (12 yr. warranty)
- O 3/8" roof decking (full walk-on roof)
- P R-7 fiberglass insulation throughout
- Q Dual bottle cover w/ easy access
- R 5" truss roof rafters 16" on center
- S Scare light
- T 024 aluminum siding (fiberglass opt.)
- U 84" interior height (DLX, Lodge) 96" in Grand Lodge
- V Triple seal system for slideouts

## LODGE / GRAND LODGE STANDARDS AND OPTIONS AND FEATURES

### COMFORT AND CONVENIENCE

102" exterior width for increased living space  
 84" interior height  
 Beauflor™ w/ 7 yr. limited warranty  
 Frost proof garden hose spigot (off door side)  
 Black framed tinted glass windows  
 WaterPur™ whole house water filtration system  
 Water heater by-pass  
 Wired and braced for second A/C  
 Pleated night shades  
 20-gallon electric water heater  
 Ducted Dometic® 15,000 BTU central air conditioner w/ quick cool feature  
 In-floor ducted heat w/ 40K BTU furnace  
 Shaw stain resistant carpet w/ padding  
 Flush-floor hydraulic slide rooms w/ manual override  
 Systems monitor panel  
 50 amp electrical service and 65 amp 12-volt converter  
 Solid hardwood drawer fronts

### KITCHEN

Free standing dinette with 4 chairs  
 Deluxe window package at dinette  
 Extra large raised panel overhead cabinets  
 Full extension ball bearing drawer guides  
 20" freestanding 4 burner gas range w/ oven (black)  
 18.5 cu. ft. residential electric refrigerator w/ icemaker (black)  
 Microwave w/ carousel and range hood (black)  
 Hidden storage beneath dinette seat cushions  
 Undermount stonecast 60/40 residential style sink  
 Pull out sprayer faucet  
 Pantry with shelves  
 Self edge countertops throughout

### LIVING ROOM

Swivel rocker chair(s) (per floorplan)  
 Surround sound TV hook-up  
 Jensen™ DVD/CD/AM/FM stereo w/ mp3 hook-up  
 4 cube speakers and sub woofer  
 Digital TV antenna w/ booster

Cable and satellite door side hookup  
 Glass sliding patio door w/ vertical blinds and screen door  
 Coordinating wallpaper border  
 Ceiling fan w/ wall switch

### BEDROOM

Neo-Angle shower w/ glass door  
 Built-in wood medicine cabinet and mirror  
 Ceiling light w/ convenient wall switch  
 Full extension ball bearing drawer guides  
 ABS shower w/ one-piece surround  
 12" 10-blade Fantastic Bath Fan™  
 Toothbrush holder and towel ring

### BATHROOM

Built-in wood medicine cabinet and mirror  
 Ceiling light w/ convenient wall switch  
 Foot flush toilet(s)  
 ABS tub or shower w/ one-piece

### EXTERIOR

Smooth fiberglass radius baggage doors  
 Cold Crack and mildew resistant vinyl awing  
 15" radial tires (per floorplan)  
 30 lb. double LP tanks w/ automatic change over  
 EZ access LP tank cover  
 City water fill w/ brass valve  
 Swing out assist handle

### CONSTRUCTION

12" forged I-beam frame  
 Cambered chassis  
 Seamless holding tanks

Color coded water lines  
 2" x 3" floor joists 12" on center  
 5/8" 5-ply tongue and groove plywood floor decking  
 2" wall studs maximum 16" on center  
 5" bowed truss roof rafters  
 3/8" walk-on roof decking  
 Seamless one-piece roof w/ 12 year warranty  
 Triple sealed slide outs  
 R-7 insulation throughout (floors, walls, ceilings, and slide-outs)

### SECURITY AND SAFETY

Smoke detector  
 Fire extinguisher  
 Carbon monoxide detector  
 LP gas leak detector  
 Door latch w/ integral dead bolt lock  
 Lighted main entry step w/ interior switch  
 Amber porch light w/ interior switch  
 Main entry doorside flood light  
 GFI receptacles and covered patio outlet  
 Welded heavy duty safety chains  
 Hitch light  
 Lockable fiberglass radius baggage doors  
 ANSI 119.5  
 Certified to meet all National Highway Traffic Safety Administration Specifications

### POPULAR OPTIONS

Gelcoat fiberglass exterior  
 Skylight over tub  
 Garden tub w/ glass door (per floorplan)

La-Z-Boy® living room furniture (a Forest River exclusive)  
 Air hide-a-bed sofa  
 Detachable hitch  
 Outside shower  
 10-gallon gas/electric DSI water heater (IPO 20 gal electric)

### GRAND LODGE UPGRADES OVERLODGE

96" (8') interior height  
 Cathedral slide (main slide room)  
 Knife holder and spice rack behind oven  
 Under mount bathroom sink  
 Fluorescent lighting in kitchen  
 3 ceiling paddle fans w/ light kits (110v)  
 110v lighting in coach area ceiling  
 Skylights in main slide above dinette w/ shades  
 Window above main patio door  
 Stone facade around fireplace  
 Residential porch light  
 Air hide-a-bed in main slide  
 Lighting in kitchen soffit  
 Residential master bed comforter  
 Decorative pillows  
 Washer/dryer prep (standard 408FLFB, optional 408REDS)

### OPTIONAL EQUIPMENT

La-Z-Boy recliners  
 La-Z-Boy sofa w/ hide-a-bed (must chose Slate or Cognac Leather décor)  
 Detachable hitch  
 Gel coat exterior upgrade



TUSCAN DECOR



SLATE DECOR



COGNAC LEATHER DECOR



SOAPSTONE DECOR



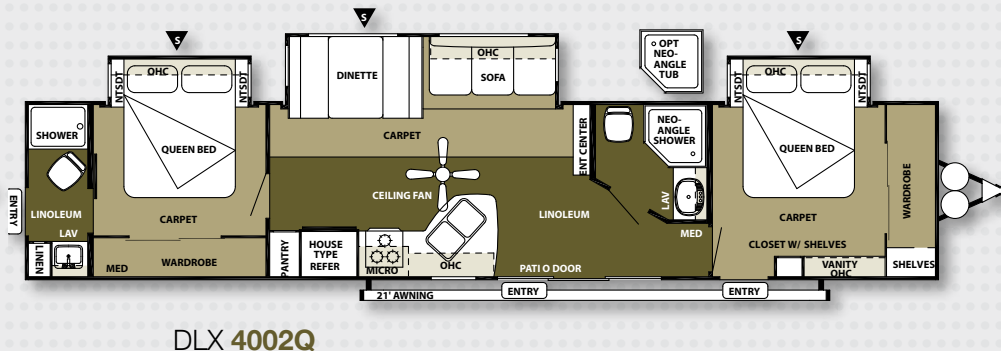
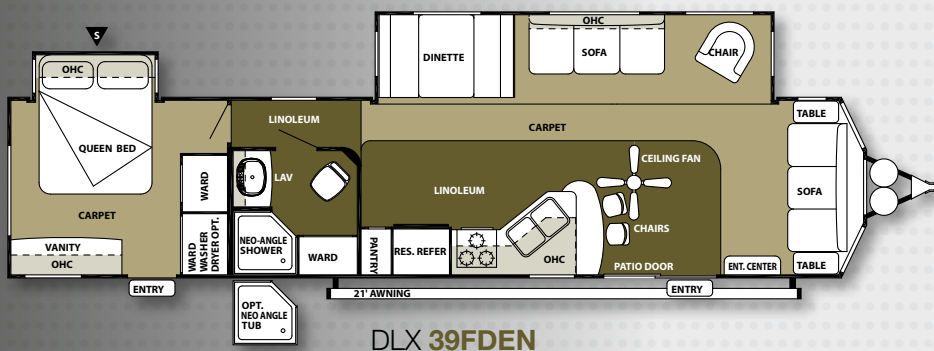
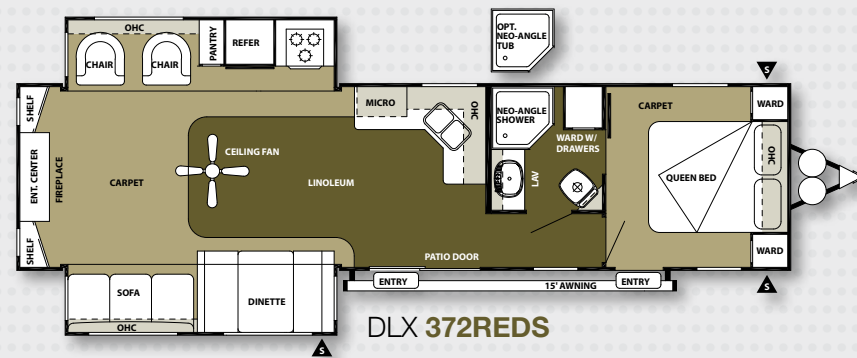
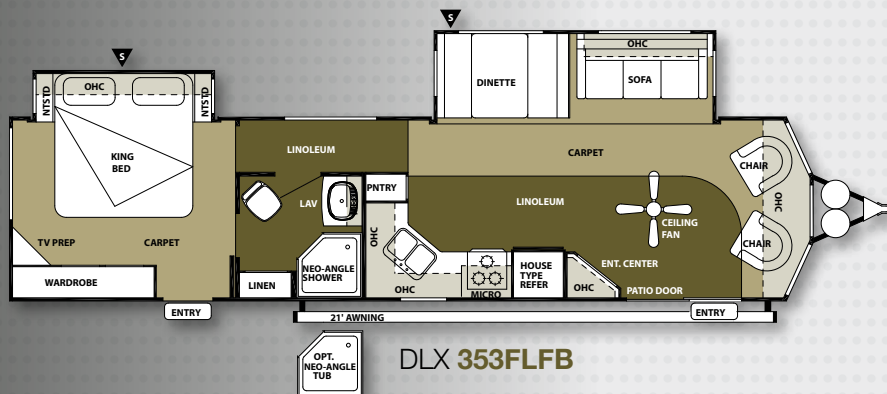
## LODGE / GRAND LODGE FEATURES



### INTERIOR FEATURES

- 1: Beauflor (7 yr. warranty) 2: Night shades 3: Foot flush toilet 4: Comfort flex bed frame 5: Water filter  
6: Spray faucet 7: Fireplace (per model) 8: Ceiling fan 9: Silverware drawer 10: Shaw carpet 11: Free standing range  
12: Outside spigot 13: Patio door (std. all models) 14: Fantastic fan

## WILDWOOD DLX FLOORPLANS



### SPECIFICATIONS

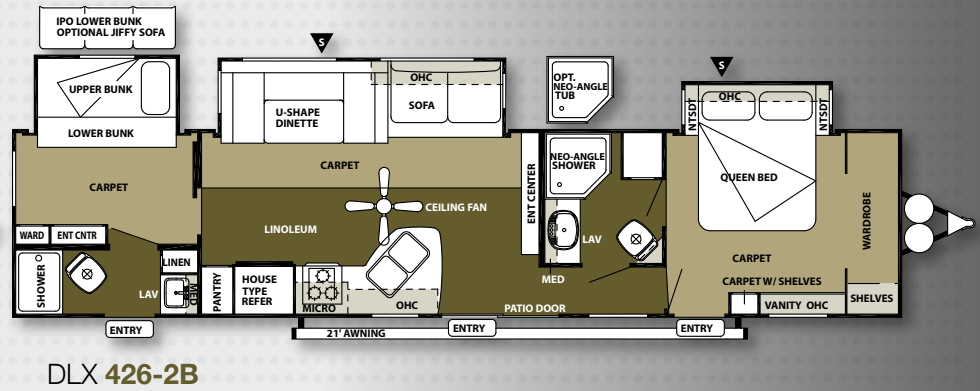
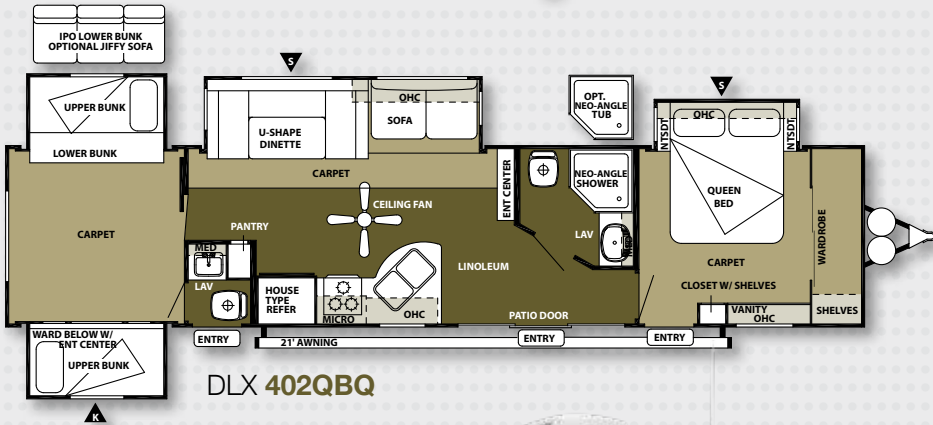
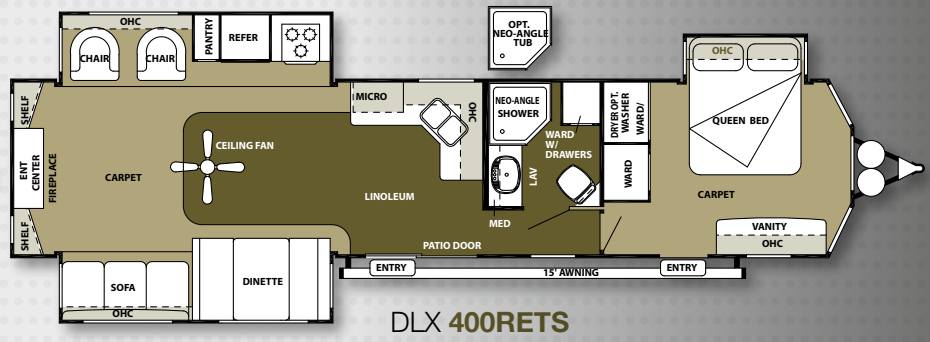
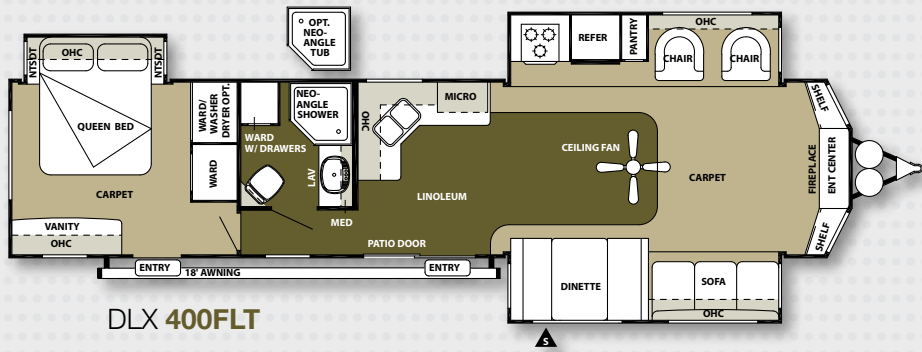
	353FLFB	372REDS	39FDEN	4002Q	400FLT	400RETS	402QBQ	426-2B
hitch weight lb.	1290	1005	1362	1260	1705	1375	1035	1365
axle weight	7330	8035	8363	8980	8185	8685	9550	8810
dry ship weight	8620	9040	9725	10240	9890	10060	10585	10175
CCC (cargo capacity)	2770	2066	1738	1121	1916	1416	2390	1290
ext. length	38' 6"	38' 7"	40' 10"	43' 5"	40' 9"	40' 9"	40' 8"	40' 5"
ext. height	12' 3"	12' 3"	12' 3"	12' 3"	12' 3"	12' 3"	12' 3"	12' 3"
int. height	84"	84"	84"	84"	84"	84"	84"	84"
fresh water cap. gal.	39	42	39	39	39	42	29	39
black water cap. gal.	43	43	38	75	43	43	75	71
grey water cap. gal.	43	43	38	75	43	43	75	71
tire size in.	15"	15"	15"	15"	15"	15"	16"	15"
awing size ft.	21'	15'	21'	21"	18'	15'	21'	21"

storage

OHC overhead cabinet  
 WARD wardrobe  
 MICRO microwave  
 LAV bathroom sink

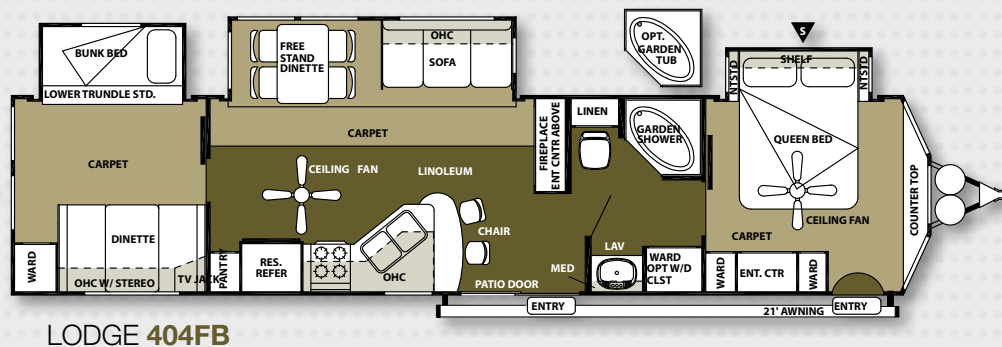
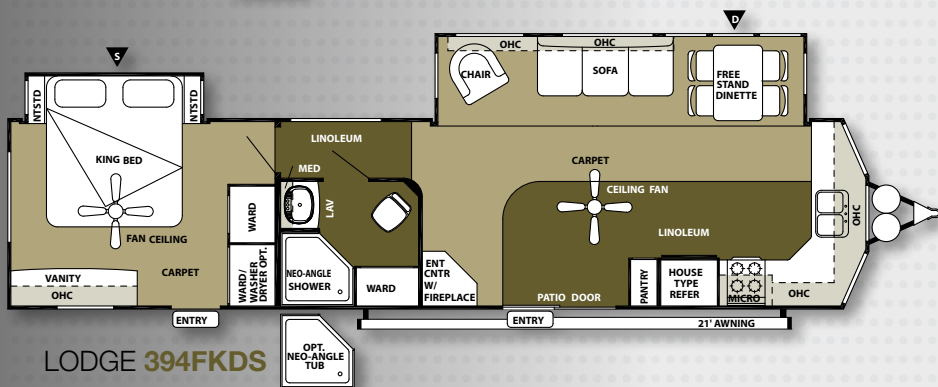
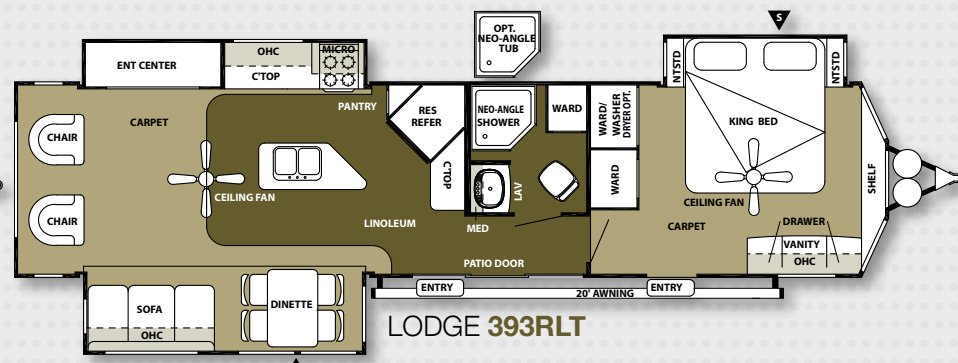
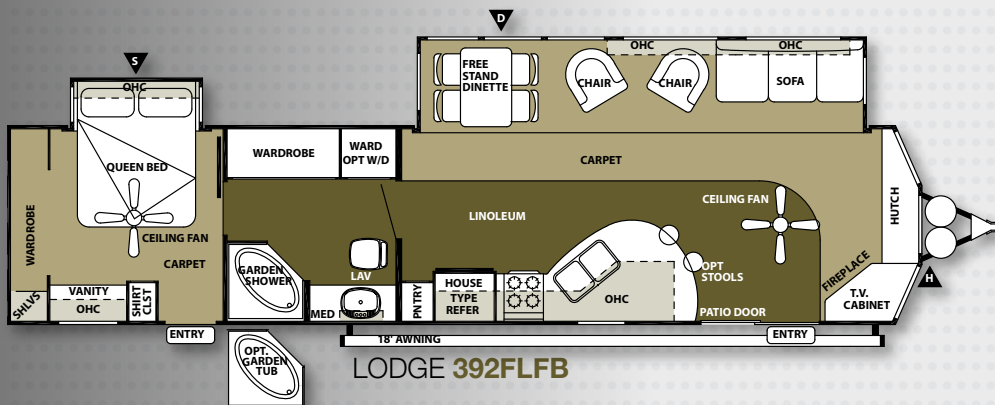
Pillows and blankets shown on bunks are for demonstration purposes only and do not come with your new coach.

# WILDWOOD DLX FLOORPLANS



# Wildwood DLX

## LODGE FLOORPLANS



### SPECIFICATIONS

	392FLFB	393RLT	394FKDS	404FB
hitch weight lb.	1500	1615	1555	1385
axle weight	8700	9045	8520	9315
dry ship weight	10200	10660	10075	10700
CCC cargo capacity	1400	2896	1581	2626
ext. length	40'	40' 5"	40' 10"	40' 11"
ext. height	12' 3"	12' 3"	12' 3"	12' 3"
int. height	84"	84"	84"	84"
fresh water cap. gal.	39	39	39	39
black water cap. gal.	27	40	43	40
grey water cap. gal.	38	80	67	70
tire size in.	15"	16"	15"	16"
awing size ft.	18'	20'	21'	21'

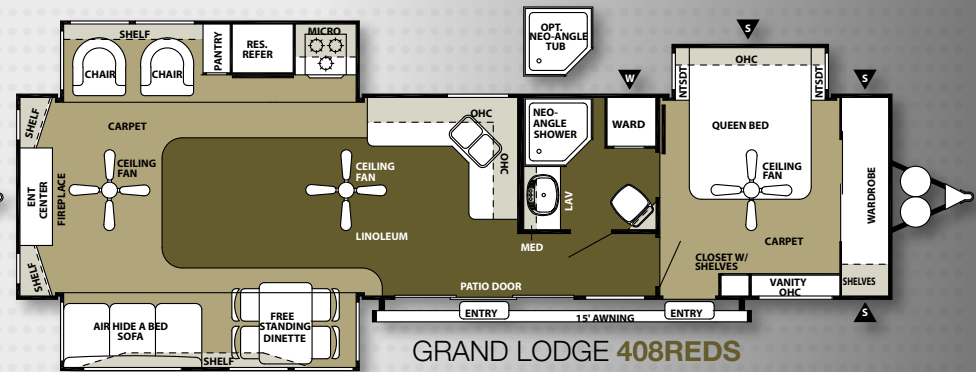
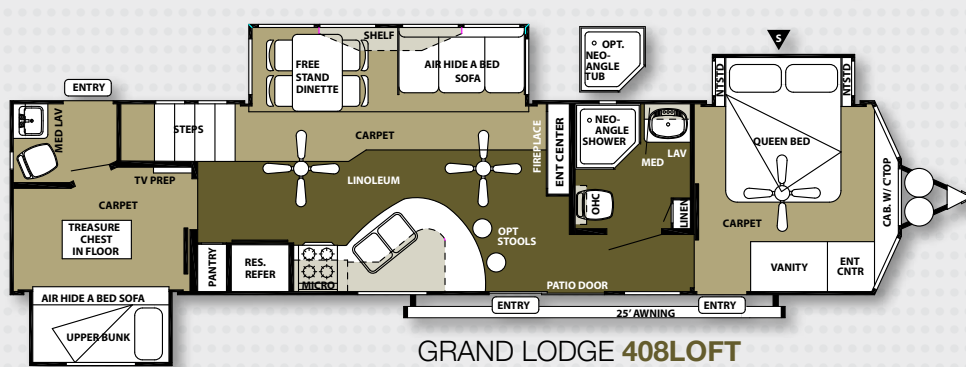
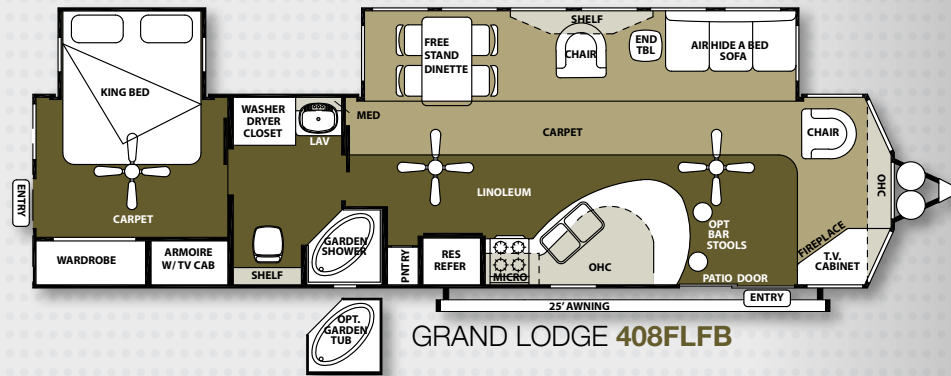
- deluxe window package
- storage
- hidden LP bottles
- OHC overhead cabinet
- WARD wardrobe
- MICRO microwave
- LAV bathroom sink

Pillows and blankets shown on bunks are for demonstration purposes only and do not come with your new coach.



# LODGE

## GRAND LODGE FLOORPLANS



### SPECIFICATIONS

	408FLFB	408LOFT	408REDS
hitch weight lb.	1790	1515	1295
axle weight	9405	10685	9990
dry ship weight	11195	12200	11285
CCC (cargo capacity)	2536	1255	1950
ext. length	40' 5"	41' 6"	39' 9"
ext. height	13' 3"	13' 3"	13' 3"
int. height	96"	96"	96"
fresh water cap. gal.	39	39	39
black water cap. gal.	40	64	40
grey water cap. gal.	40	86	40
tire size in.	16"	16"	16"
awing size ft.	25'	25'	15'

- opt. washer dryer
- prep does not include cab. storage

OHC overhead cabinet  
 WARD wardrobe  
 MICRO microwave  
 LAV bathroom sink

Pillows and blankets shown on bunks are for demonstration purposes only and do not come with your new coach.



# GRAND LODGE

# Wildwood **LODGE GRAND LODGE** DLX

THE QUALITY YOU EXPECT, THE LUXURY YOU DESERVE.



## EXCELLENT CRAFTSMANSHIP

Only the finest attention to detail goes into each Wildwood. Our skilled craftsman have many years of experience building beautifully finished cabinetry. The solid nature of our well designed woodwork is another reason why Wildwood is the best built RV on the road.



Forest River, Inc. encourages our customers to purchase their Forest River products whenever possible for the following reasons:

It is the goal of Forest River, Inc. that all of our RV owners fully enjoy the RV experience and that customer satisfaction meets or exceeds their expectations!

- 1) Forest River, Inc. dealers are independently owned and operated businesses so priority service and scheduling is at their discretion and is often provided to customers that purchased their unit at that dealership.
- 2) Purchasing locally allows customers to establish meaningful relationships with a dealer, enhancing the RV experience through assistance with product questions, user tips or RV regulations for your state or country, and much more!
- 3) Canadian customers must meet requirements to bring an RV purchased out of the country to their home. These requirements may involve additional inspections and certifications, taxes and fees. Your local Canadian Dealer is a professional at meeting these requirements.
- 4) Scheduling timely warranty repairs and adjustments through a local dealership provides far greater flexibility and convenience to you, the customer!



## PRE-DELIVERY INSPECTION FACILITY

20,000 square feet of quality assurance. The bare essentials for a premium product. This state-of-the-art facility gives immediate daily feedback to production for quality assurance in every unit built.

## YOUR LODGE SERIES DEALER

## 24/7 EMERGENCY ROADSIDE ASSISTANCE

For a worry-free ownership experience Forest River includes one

year of Coach-Net RV Technical & Roadside Assistance with each RV purchase. Whether new to the RV lifestyle or an experienced RV enthusiast, Forest River owners have 24/7 access to technical, operational and emergency road service coverage throughout the US & Canada. Coach-Net's fast, dependable service is just a phone call away.

**Coach-Net**<sup>®</sup>  
RV Technical & Roadside Assistance

**FREE MEMBERSHIP**  
to Forest River Owners' Group

[www.forestriverfrog.com](http://www.forestriverfrog.com)



### Learn More

Scan this barcode using a QR Reader on your smart phone to learn more about Forest River.



A Berkshire Hathaway company.

Forest River, Inc.  
55470 C.R. 1  
Elkhart, IN 46515  
(574) 533-5934  
[www.forestriverinc.com](http://www.forestriverinc.com)  
[www.forestriveraccessories.com](http://www.forestriveraccessories.com)