

# Montana



E<sup>B</sup>X<sup>U</sup>P<sup>I</sup>E<sup>L</sup>T<sup>B</sup>  
E<sup>R</sup>I<sup>E</sup>N<sup>C</sup>E

3610RL IN COPPER PATINA DECOR



Montana 02

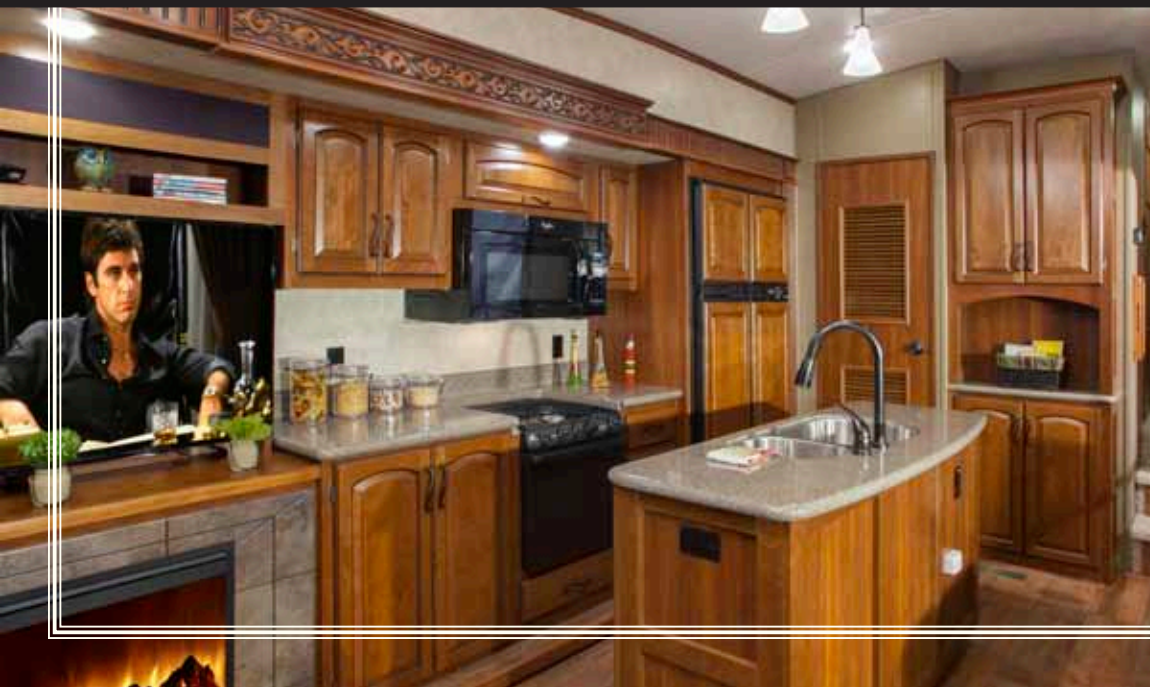


After 11 consecutive years as the best selling fifth wheel brand in America, Montana continues to provide unmatched quality, luxury and livability. Montana's Old World Craftsmen are the finest in the industry and continually strive to provide a level of "fit and finish" second to none. Look around and find yourself surrounded by the finer things such as recessed LED light fixtures, glazed cherry hardwood cabinets and plush residential carpeting with thick rebond padding. It's exactly what you should expect from the most recognized name in fifth wheels.

Eleven lavish models provide floor plan flexibility while the list of standard equipment and luxury enhancements seems endless. The new 3610 RL features an 80" long sofa below the expansive rear window with recliners or optional theater seating positioned directly across from the flat panel Sony HD television. The kitchen pantry offers abundant storage or space for a stackable washer and dryer. Minimal carpet in the living area and kitchen enhances this floor plan's durability.



03 **Montana**



3735MK IN CARBON DECOR



Montana 04

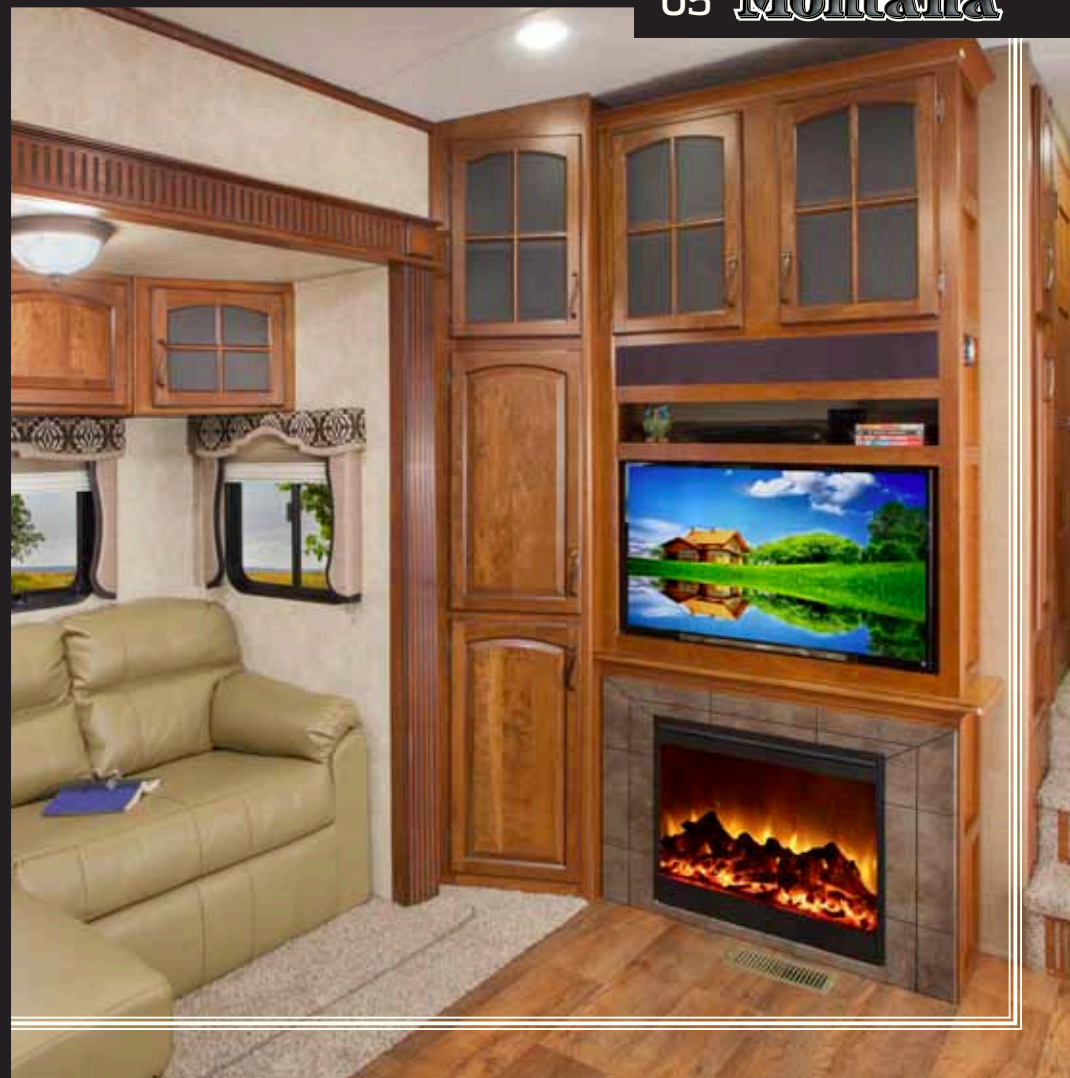


The new 3735 MK is a floor plan that begs to be called home with a tremendous island kitchen, full pantry, and over 50 cabinet doors and drawers. The rear desk with file cabinet drawers is the perfect place to catch up on email, surf the web or work from the road. Two entry doors not only provide beautiful natural light and fresh air, but easy access to the kitchen and bathroom when the slide-outs are closed.

3735MK IN CARBON DECOR



05 Montana

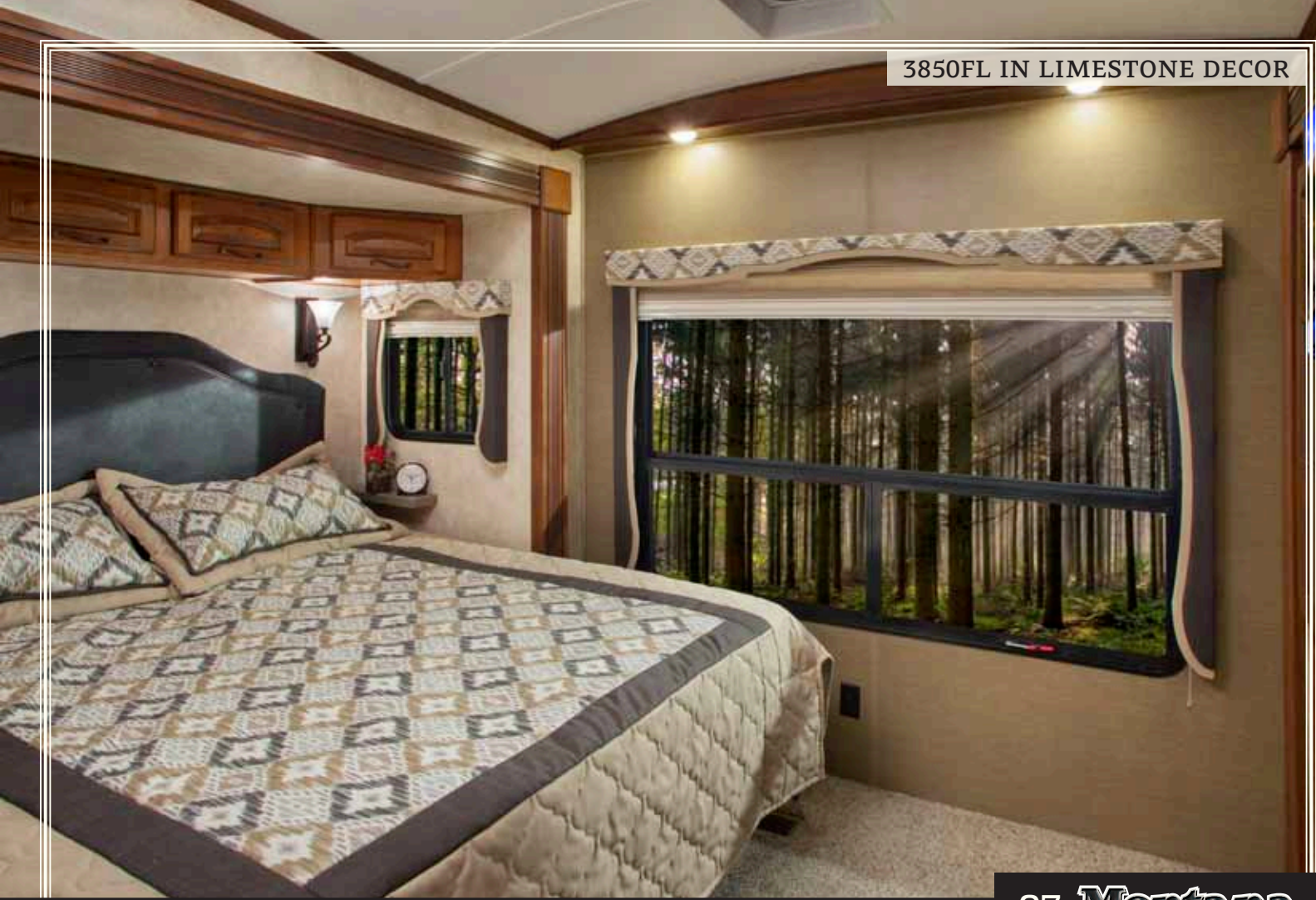




## Montana 06

The 3850 FL front living room offers unparalleled spaciousness with the innovative arched roof. Leading the way is opposing residential sofas with an ottoman in the beautiful Limestone décor. From here you can immerse yourself in the stunning clarity of the huge flat panel Sony HD television and Sony Blu-ray player home entertainment system with theater quality player 5.1 Dolby Digital surround sound. Montana brings you everything but the popcorn.

3850FL IN LIMESTONE DECOR



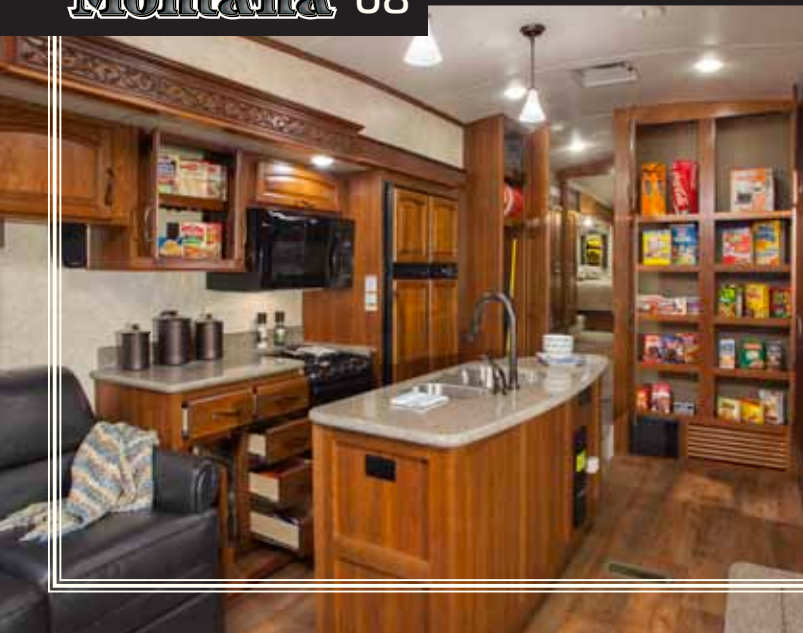
07 Montana



3725RL IN LIMESTONE DECOR



Montana 08



If you have an appetite for residential quality features and ample storage, the Montana kitchen is made to order with details like Corian countertops, flush mount range cover and dazzling backsplash. Amidst all the visual appeal, you will find the appliances you need to prepare your favorite meals, including a 30" over-the-range microwave/convection oven, 22" gas oven and three burner range top with an exterior vented range hood. Of course, the optional 4 door, 12 cubic foot refrigerator is available in all floor plans.

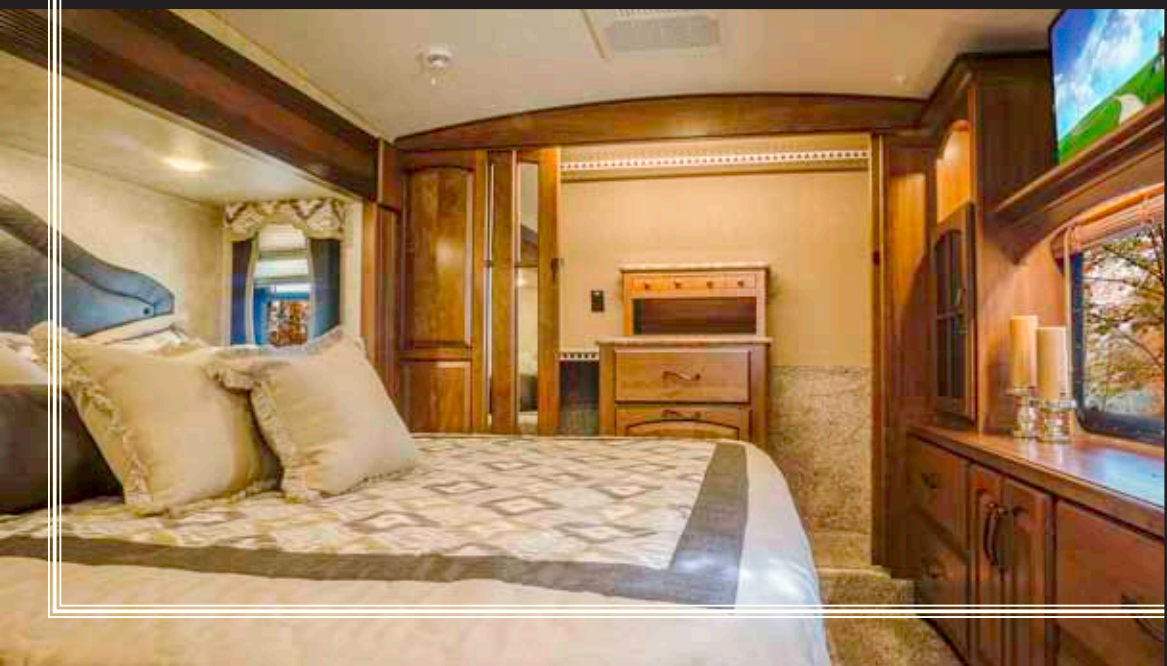


The hallway cabinets leading up to the 3725 RL bedroom are prepped for a side by side washer and dryer with each appliance on a separate circuit so both can operate at the same time. Dual entries provide easy access to the enclosed bathroom from the hallway or the bedroom. The unique corner desk in the bedroom can be employed as a work station or vanity.



3725RL IN LIMESTONE DECOR

09 Montana



## MONTANA BEDROOMS



## Montana 10



When nothing sounds better than a relaxing evening at home, look no further than the Montana bedroom suites. The entertainment center offers front row thrills thanks to a 32" flat panel HD television directly across from the bed. Several floor plans now feature a bedside linen cabinet that is accessible from the bedroom or bathroom.

The deep bedroom slide-out creates ample walk space at the foot of the bed while the arched roof provides up to 6' 8" interior ceiling height. Whether you prefer a queen or king sized bed, Montana has you covered with reading lights, bedside night stands and electrical outlets. The roomy, cedar lined storage compartment under the bed will keep your linens fresh on the longest trips.



MONTANA BEDROOMS

11 Montana



MONTANA BATHROOMS

3725RL

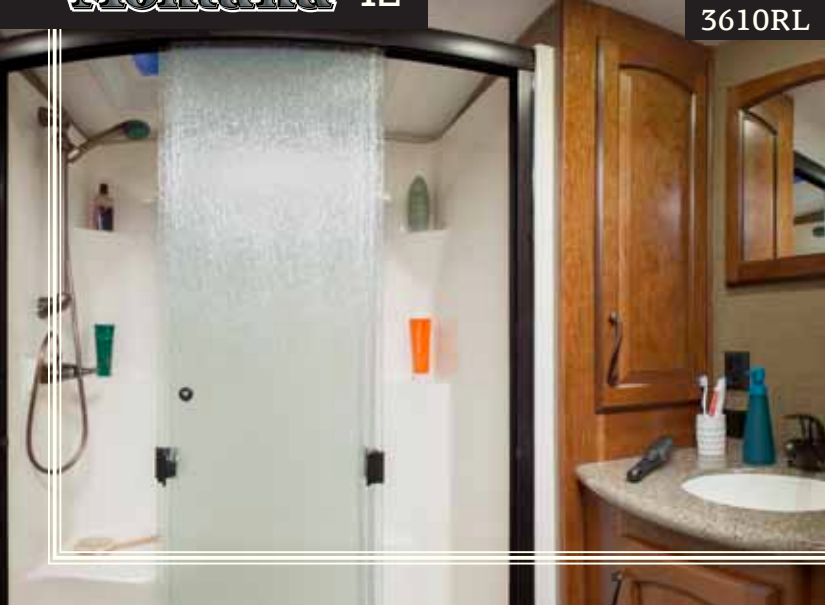


3402RL



Montana 12

3610RL



Step into the Montana bathroom and revel in the home-like surroundings: Corian vanity countertop, recessed LED lights in the ceiling and large showers. The oversized, couple-friendly medicine cabinet has a custom three bulb light fixture to provide the final decorative and functional touches. Stylish cabinetry, Corian countertops, plentiful storage and big showers...Do mornings get any better than this?

The 3900 FB features a half bathroom downstairs and an expansive master bathroom upstairs in front of the bedroom. Storage abounds throughout in the type of hand crafted wood cabinetry that makes Montana owners the envy of their peers. There's a nook, cranny or drawer for every item in your wardrobe, plus his and hers vanities for effortless organization. With bathrooms this smart and functional, life on the road is easy.

3900FB

MONTANA BATHROOMS



13 **Montana**

## ***STAY IN TOUCH***



Montana is always just a touch away. You'll find 360 virtual tours, location of your nearest dealer, photos, videos and all of the latest information about Montana on our easy to navigate website. Everything you need can be accessed anytime, day or night, from home or on the road. You can also find us on the Keystone RV facebook.

## ***BUY LOCALLY*** PURCHASING YOUR RV LOCALLY



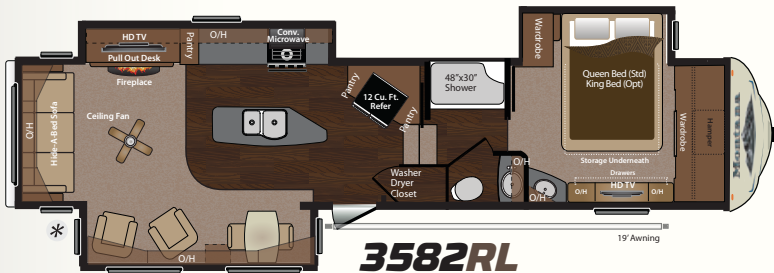
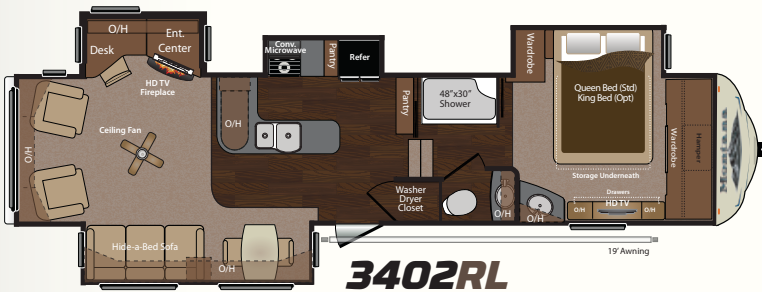
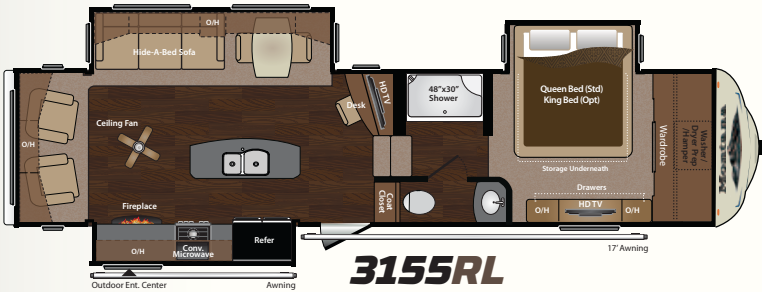
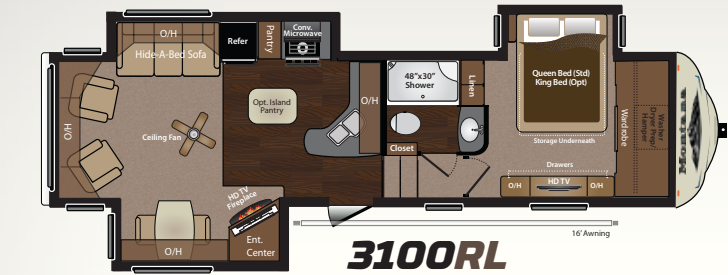
It's up to you where you purchase your new Montana, but may we suggest your local dealer? Not only does it help your local economy and provide jobs, but it will also give you an opportunity to develop a service relationship with someone that will come to know you and your coach. Congratulations on finding the best built, best equipped and best value in the industry. Happy travels!

# Montana

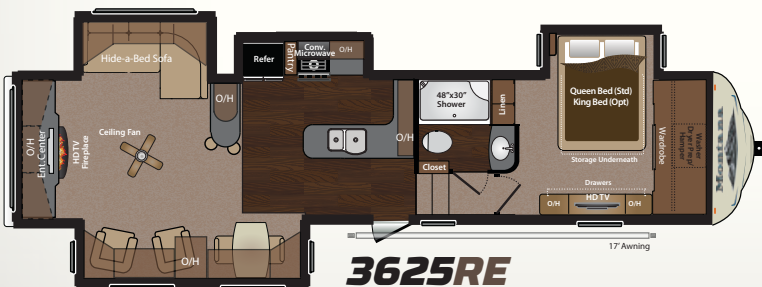
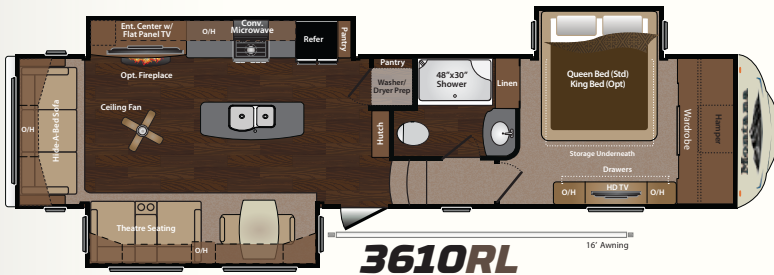
## FLOOR



## SPECIFICATIONS



\* Furniture configuration for Spring 2014 production



MODEL	3100RL	3155RL	3402RL
SHIPPING WEIGHT	11705	11880	13019
CARRYING CAPACITY	2895	3620	2981
HITCH WEIGHT	2405	2585	2635
EXTERIOR LENGTH*	35' 9"	35' 5"	39' 2"
EXTERIOR HEIGHT**	12' 11"	12' 11"	12' 11"
FRESH WATER	66	66	66
WASTE WATER	50	50	50
GRAY WATER	93	93	93
LPG CAPACITY LB.	60	60	60

MODEL	3725RL	3735MK	3750FL
SHIPPING WEIGHT	12982	13224	12629
CARRYING CAPACITY	3018	2776	3141
HITCH WEIGHT	2815	2640	2270
EXTERIOR LENGTH*	39' 2"	39' 3"	38' 2"
EXTERIOR HEIGHT**	12' 11"	12' 11"	12' 11"
FRESH WATER	66	66	66
WASTE WATER	50	50	50
GRAY WATER	93	93	93
LPG CAPACITY LB.	60	60	60

DISCLAIMER: Product information is as accurate as possible as of the date of publication of this brochure. All features, floor plans, and specifications in this brochure are subject to change without notice. Please also consult Keystone's web site at [www.keystonerv.com](http://www.keystonerv.com) for more current product information and specifications. Tow Vehicle Disclaimer. CAUTION: Owners of Keystone recreational vehicles are solely responsible for the selection and proper use of tow vehicles. All customers should consult with a motor vehicle manufacturer or their dealer concerning the purchase and use of suitable tow vehicles

# Montana

## PLANS



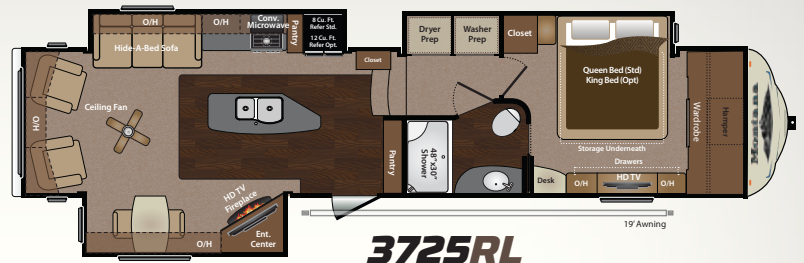
## CONFIGURATIONS

3582RL	3610RL	3625RE	MODEL
12730	12480	12978	SHIPPING WEIGHT
3260	3520	3022	CARRYING CAPACITY
2490	2790	2750	HITCH WEIGHT
39' 2"	38' 3"	38' 7"	EXTERIOR LENGTH*
12' 11"	12' 11"	12' 11"	EXTERIOR HEIGHT**
66	66	66	FRESH WATER
50	50	50	WASTE WATER
93	93	93	GRAY WATER
60	60	60	LPG CAPACITY LB.

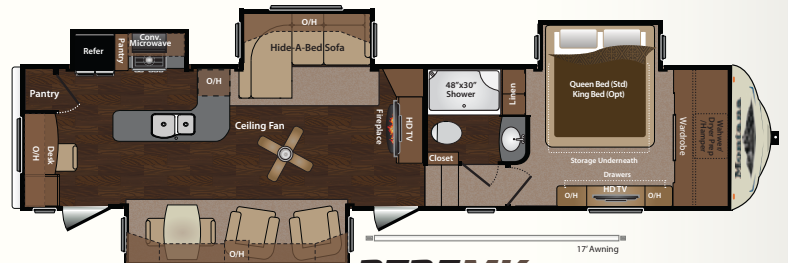
3850FL	3900FB	MODEL
12842	12856	SHIPPING WEIGHT
3158	3074	CARRYING CAPACITY
2360	2430	HITCH WEIGHT
39' 3"	39' 2"	EXTERIOR LENGTH*
12' 11"	12' 11"	EXTERIOR HEIGHT**
66	66	FRESH WATER
50	93	WASTE WATER
93	93	GRAY WATER
60	60	LPG CAPACITY LB.

for Keystone products. Keystone disclaims any liability or damages suffered as a result of the selection, operation, use or misuse of a tow vehicle. KEYSTONE'S LIMITED WARRANTY DOES NOT COVER DAMAGE TO THE RECREATIONAL VEHICLE OR THE TOW VEHICLE AS A RESULT OF THE SELECTION, OPERATION, USE OR MISUSE OF THE TOW VEHICLE. \*Length is defined as the distance from the centerline of hitch pin/coupler to rear bumper of trailer. Add 6 inches for MOR/ryde pin box. \*\* Add 6 inches for second A/C. 02/2014

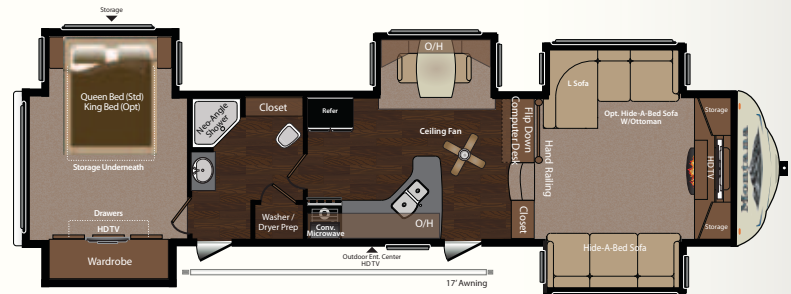
## 15 Montana



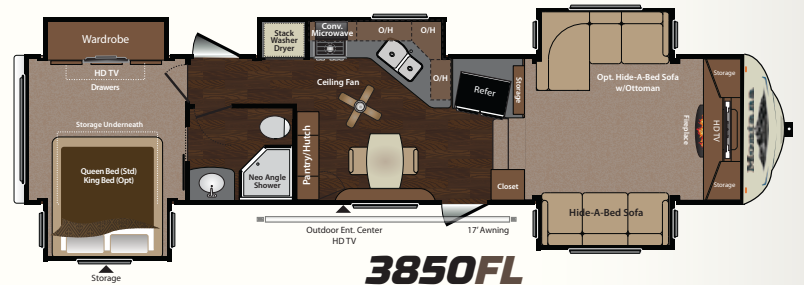
**3725RL**



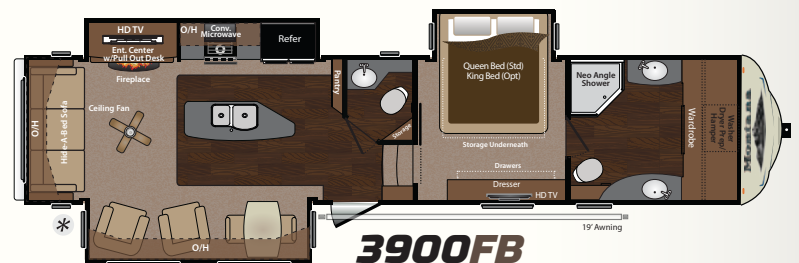
**3735MK**



**3750FL**



**3850FL**



**3900FB**

\* Furniture configuration for Spring 2014 production



360° VIRTUAL  
TOUR AVAILABLE AT  
KEYSTONERV.COM



**SCAN ME** »»»»

FOR MORE INFORMATION ON MONTANA FIFTH  
WHEELS ALONG WITH OTHER GREAT CONTENT

## NEW STANDARD FEATURES

- » Automotive finish high gloss gel coated fiberglass exterior
- » Fantastic fan with rain sensor in kitchen or living room
- » 30" Over-The-Range convection/microwave oven with range hood

- 1 » Solid hardwood slide-out fascia
- » Industry first full length arched ceiling
- » Drawer under refrigerator (Models 3100,3155, 3402, 3625, 3725, 3900)
- 2 » Four step entry
- » 35,000 BTU furnace with auto ignition and high capacity in line heating system
- » Full extension drawer guides

## PARAMOUNT PACKAGE

- 3 » Frameless windows
- » 12" I-Beam frame
- » New Max Turn front cap w/ dual LED light bars & hitch vision
- » New rear cap w/ back-up lights
- » Enhanced coverage graphics
- 4 » 24 Diode LED recessed interior lighting
- » Backlit LED light strips
- » Contemporary sorrel wall board
- » Upgraded linoleum
- » Residential stain resistant cut pile carpeting
- 5 » 70/30 stainless steel kitchen sink
- » High arch pull out kitchen faucet
- 6 » Royal Entourage Corian® countertops and Corian® kitchen backsplash
- » Flush mounted Corian® range covers
- » Glazed cherry hardwood cabinet doors, drawers, and stiles
- 7 » Elegant crown molding above kitchen & bedroom cabinets
- 8 » Hand laid mullion cabinet doors in living area & bedroom
- » Hand laid mullion bedroom closet doors
- » "Slide Wide Open" bedroom closet w/LED track lighting
- » Increased cedar lined storage under bed w/hidden storage
- 9 » New bedroom dresser & armoire w/residential wood blinds
- 10 » Bedroom 32" HD flat panel TV
- 11 » Bedroom cell phone charging station

## MOVING TO MONTANA PACKAGE

- » Queen bed (60 by 80-inch mattress)
- » Heavy duty wet bolt kit with bronze bushings and ½" shackle links
- » Central exterior water and convenience center
- » Dexter™ E-Z Lube axles with self adjusting brakes
- » MOR/Ryde™ LRE 4100 rubber suspension system
- » 5" Arched roof rafters
- » Aluminum wheels
- » Arctic insulation package
- » Vented attic system
- » Wire & frame for ducted 2nd A/C w/ remote sensor & dual zones
- » 1/2 Turn hydraulic selector valves
- » Deep tint safety glass windows
- » 15,000 BTU Dometic "Quiet Zone"™ air conditioner
- » (2) Hi back recliners (N/A 3750, 3850)
- 12 » Washer/Dryer prep
- » Blu-ray Player w/ 5.1 surround sound & HDMI cable
- » Dual reading lights over the bed
- » Ceiling fan with light kit
- » Raised panel refrigerator front

- » (2) flush mount Corian® kitchen sink covers
- » Hide-A-Bed sofa
- » Welded, aluminum framed walls, floors, and slide-outs
- » R-10 laminated sidewalls with dual layered luan
- » HD Digital TV antenna w/ booster
- » Deluxe porcelain toilet
- » RG-6 Satellite prep w/dual inputs for living area TV & bedroom TV
- » Black tank flush
- » Sky dome over Tub
- » Fold away entry handle
- » Rear roof ladder
- » Dual patio security lights
- » Undermount spare tire & carrier
- » Carbon monoxide detector and smoke detector
- » 50 Amp Service w/detachable cord

## FULL TIME LIVING PACKAGE

- » Insulated slam latch pass thru storage compartment doors with gas struts
- 13 » Enormous drop frame pass thru storage compartment
- » 30" Deep bedroom slide-out
- » 6'6" Tall main slide-outs
- » Radiant technology roof insulation (R-38 total)
- » Seamless underbelly enclosure
- » Free standing dinette
- 14 » 90 AMP Intelli-Power 4500 converter
- » HD Flat panel TV in Living Area (Size varies by model)
- » Welcome home entry light
- » 12 gallon DSI gas/electric water heater
- » 50 gallon black tank capacity
- » 93 gallon gray tank capacity
- » 66 gallon fresh water capacity

## EQUIPMENT OPTIONS

- » Low profile ducted 2nd 13,500 BTU A/C
- » Fantastic vent fan (location varies by model)
- » Generator ready (Onan 5.5 Kw Specifications)
- » Onan Marquis Gold 5.5 kw - LP generator
- » 12 Cubic foot 4 door refrigerator
- 15 » Electric fireplace
- 16 » Central vacuum
- » Rolling island pantry (3100 only)

## EXTERIOR OPTIONS

- » Mor/Ryde™ hitch pin
- » Dual pane safety glass windows
- » Slide awning package
- » 6-Point hydraulic auto-leveling system
- » Goodyear™ "G" Range tires and rims

## INTERIOR OPTIONS

- » King size bed
- » End table and lamp
- » Hi-Back desk chair w/ step ladder
- » Leather furniture package
- » Leather theatre seating (3610)
- » 2nd Hide-A-Bed sofa w/ottoman (3750, 3850)
- » Booth dinette IPO free standing dinette (n/a 3100, 3625, 3725, 3750, 3850)





**01. SOLID HARDWOOD  
SLIDE-OUT FASCIA**



**02. FOUR STEP ENTRY**



**03. FRAMELESS WINDOWS**



**04. 24 DIODE LED RECESSED  
INTERIOR LIGHTING**



**05. 70/30 STAINLESS STEEL  
KITCHEN SINK**



**06. ROYAL ENTOURAGE  
CORIAN COUNTERTOPS &  
CORIAN KITCHEN BACKSPLASH**



**07. ELEGANT CROWN MOLDING  
ABOVE THE KITCHEN &  
BEDROOM CABINETS**



**08. HAND LAID MULLION  
CABINET DOORS IN LIVING  
AREA & BEDROOM**

# EXPERIENCE BUILT BY MONTANA



**09. NEW BEDROOM DRESSER  
& ARMOIRE W/RESIDENTIAL  
WOOD BLINDS**



**10. BEDROOM 32" HD  
FLAT PANEL TV**



**11. BEDROOM CELLPHONE  
CHARGING STATION**



**12. WASHER/DRYER PREP**



**13. ENORMOUS DROP FRAME  
PASS THRU STORAGE  
COMPARTMENT**



**14. 90 AMP INTELI-POWER  
4500 CONVERTER**



**15. ELECTRIC FIREPLACE**



**16. CENTRAL VACUUM**

## WALL CONSTRUCTION (R-10)

- ① 30" Wide x 78" Tall Entry Door with Window
- ② Frameless Deep Tint Safety Glass Windows with UV Inhibitor
- ③ Adjustable Electric Patio Awning
- ④ Automotive Finish High Gloss Fiberglass Exterior Walls, Baggage Doors & Entry Doors
- ⑤ Dual 1/8" Luan Backers with Staggered Seams
- ⑥ High Density Block Foam Insulation
- ⑦ 2" Welded Aluminum Wall Studs
- ⑧ Electro-Galvanized Sheet Metal Backing Strips
- ⑨ Max Turn Fiberglass Front Cap with Improved Turning Radius, Dual LED Light Bars & Hitch Vision Mirror
- ⑩ Rear Fiberglass Cap with Back-Up Lights & Rear Ladder

## ROOF CONSTRUCTION (R-38)

- ⑪ One-Piece EPDM Roof with 12-year Warranty
- ⑫ Aluminum Radius Roof Corner Molding Wrap
- ⑬ 3/8" Fully Walkable Roof Decking
- ⑭ Radiant Technology Insulation
- ⑮ Fiberglass Insulation
- ⑯ 5" Arched Roof Rafters
- ⑰ Attic Vents
- ⑱ Dometic Quiet Zone™ 15,000 BTU A/C

## FLOOR CONSTRUCTION (R-21)

- ⑲ Residential Stain Resistant Cut Pile Carpet
- ⑳ Residential 7lb Rebond Carpet Padding
- ㉑ Residential Linoleum
- ㉒ 5/8 Seamless Floor Decking
- ㉓ 3" Welded Aluminum Floor Joists
- ㉔ Enclosed & Insulated Water Lines Between Floor Joists
- ㉕ Large Capacity Heat Duct
- ㉖ Fiberglass Insulation
- ㉗ Astro-Foil Insulation Below Holding Tanks
- ㉘ Fully Enclosed Underbelly with One Piece Fluted Polypropylene

## TIRES & CHASSIS

- ㉙ 12" Steel "Powder Coated" I-Beam Frame with Drop Frame Pass Through Storage
- ㉚ MOR/Ryde™ LRE 4100 Suspension
- MOR/Ryde™ Wet Bolt Kit with Bronze Bushings
- 8-Lug Dexter™ E-Z Lube Axles with Nev-R-Adjust Brakes

## 5" ARCHED ROOF RAFTER

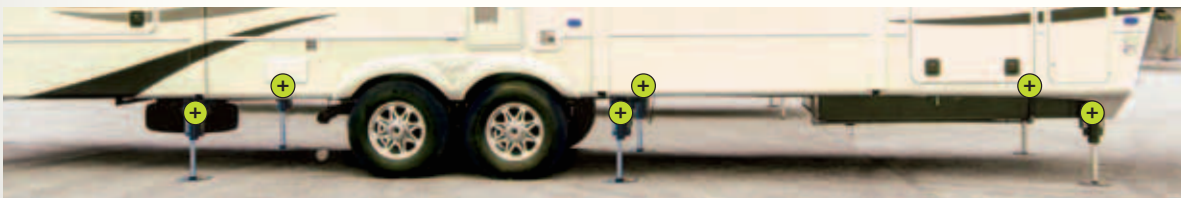


- Provides Unique Interior Feel and Look
- 5" Thick Insulation Consistent Throughout the Roof
- Arched Rafters Provide Greater Roof Weight Distribution
- Increased Interior Height Through the Montana Fifth Wheel



## 6 POINT HYDRAULIC AUTO LEVELING SYSTEM

This system has the strength you need and it is so easy to use that with one touch the coach levels itself.





# FOUR SEASON LIVING: ZERO DEGREE TESTED AND UNSURPASSED HOT WEATHER COMFORT

» The industry leader in four season fifth wheel capabilities, Montana has been tested and approved for zero degree usage since 2005.

» Radiant technology insulation combined with a layer of fiberglass insulation provide the equivalent of R-38 roof insulation. Unlike conventional fifth wheel roofs that taper down to 2" thick at the sidewall, Montana's arched roof provides consistent 5" thick roof insulation across the entire span from sidewall to sidewall.

» The Montana sidewalls are laminated with R-10 solid block foam insulation.

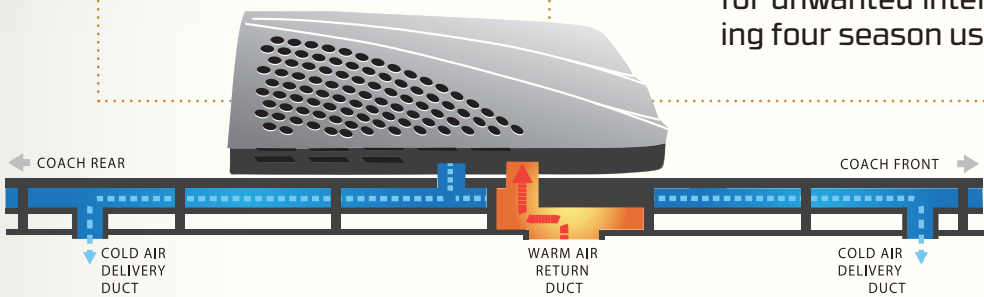
» The floor is insulated with a layer of heat reflective Astro-Foil plus a layer of fiberglass insulation equaling an R-21 value. Most importantly, the water lines are installed between the floor joists, near the heat duct and above all of the insulation and the heated underbelly.

» The holding tanks and dump valves are completely enclosed, insulated and heated.

» The low point drains are enclosed in the heated exterior convenience center.

» The optional second air conditioner is ducted and is controlled by the dual zone, digital thermostat. A remote sensor monitors the bedroom temperature.

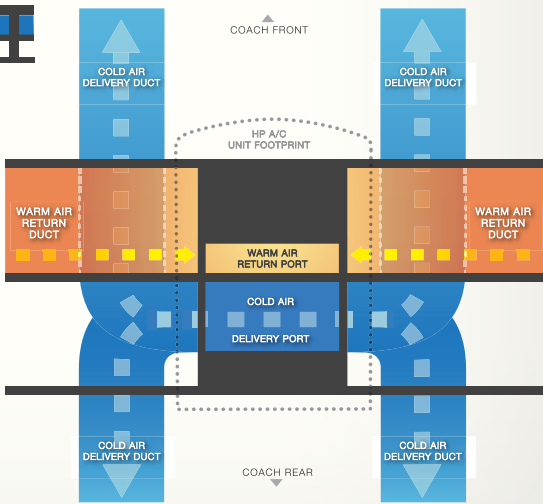
» Montana's vented attic provides vital escape routes for unwanted interior moisture that accumulates during four season usage.



## DOMETIC QUIET ZONE™ AIR RETURN SYSTEM



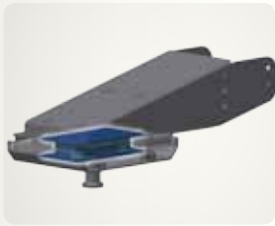
*How it works:* The Quiet Zone System™ feeds cool air directly into the ductwork system. Cool air enters a port built into the rafters at the first stage of distribution. Warm air is pulled through a separate ductwork system to be vented to the outside. This residential style system keeps noise and vibration away from the living space for quiet, cool comfort.



# ULTIMATE TOWABILITY BY APPLYING "MAX TURN" TECHNOLOGY

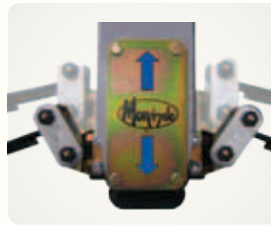
## EXPERIENCE BUILT BY

AFTER BUILDING OVER 65,000 MONTANA FIFTH WHEELS, WE'VE PERFECTED THE ART OF TOWING. YOU CAN COMPARE FEATURES. YOU CAN COMPARE FLOOR PLANS. BUT WHEN IT COMES TO TOWING, THERE IS SIMPLY NO COMPARISON TO A MONTANA FIFTH WHEEL.



### OPTIONAL MOR/RYDE™ PIN BOX

The optional MOR/Ryde pin box works in a horizontal planar motion (both longitudinally and laterally) to absorb towing shock and effectively diminish the transfer of forces from fifth wheel to truck. Forget about that harsh, jerky chucking action - not to mention the added strain on you!



### MOR/RYDE™ LRE 4100 SUSPENSION

The MOR/Ryde™ LRE 4100 Suspension increases dynamic axle travel by up to 4"! No other suspension on the market offers this level of protection. Increased travel means smoother towing, improved towability and better protection from damaging road shock.



### LOW HITCH WEIGHTS

While other fifth wheels put tremendous strain on the tow vehicle with hitch weights exceeding 2500 lbs, many Montana models offer hitch weights below 2500 lbs.



### MOR/RYDE™ WET BOLT KIT

Montana also uses the heavy-duty shackle upgrade kit that includes 1/2" shackle plates, wet or grease-able bolts and bronze bushings. This kit provides longer lasting, more durable and better performing components... another "best in class" feature.



### MAX TURN TECHNOLOGY FRONT CAP TURNING RADIUS

Max Turn technology features an integrated frame and front cap design to allow for an industry best short bed truck to fifth wheel angle. Because the front rail of the Montana frame is curved to provide more radius, making a 90 degree turn no problem with short bed trucks.



### DEXTER NEV-R-ADJUST™ BRAKES

The Dexter Nev-R-Adjust™ brakes adjust automatically in the forward moving direction, eliminating the need for manual adjustments while maintaining optimum performance and braking power.



### MAX TURN TECHNOLOGY FRONT CAP

The Max Turn Technology molded fiberglass front cap features a dramatic, aviation style curved shape to dramatically reduce the drag coefficient for maximum fuel economy.



### KEYSTONE RADIAL TIRES

Every Montana fifth wheel runs on aluminum 8-lug wheels and 16" E-Range radial tires or optional 16" G-Range Goodyear™ tires.

CONNECT WITH KEYSTONE RV AND STAY UP TO DATE WITH MONTANA NEWS AND INFORMATION |



VISIT OUR ALL NEW WEBSITE TO VIEW INTERIOR PHOTOS AND MUCH MORE AT KEYSTONERV.COM |



# Montana

WWW.KEYSTONERV.COM/MONTANA

Visit the Montana Owner's Club web site independently created and maintained by Montana fifth wheel owners.

WWW.MONTANAOWNERS.COM



Go RVing



Keystone RV Company

