

Copper Canyon

by Keystone

Copper Canyon
by Keystone



www.keystone-sprinter.com

Copper Canyon

by Keystone



Basil



Kona



Elmwood

Model 252FWRLS
Shown In Kona Decor



Model 252FWFLS



Food preparation is easier than ever with our new Corian® counter top. Corian® sets the standard when it comes to solid surface. Don't be fooled by imitations. Look for the Corian® seal. It resists staining, cleans quick and easy and withstands temperatures up to 500 degrees!



Innovative Kitchen Storage Provides all of the room needed for all of your can goods!



22" Wide

9" High

Oversized Pots and Pans Drawer.



Got heavy items? With our full extension steel drawer guides we can handle it!





Model 252FWRLS



A



B



C



Model 252FWRLS



D



E



- A. With our plush new "Evergreen" mattress you will awake rejuvenated and ready for a new day of activities!
- B. LED floor lighting.
- C. Consolidated switch control center
- D. 110 or 12 volt power Air Bed Sofa with storage drawer under the couch.
- E. Flush Mounted AM/FM/CD/DVD/iPod® Hookup Audio System

The "Easy Lift" LCD TV system in the 270FWRET, 273FWRET and 314FWRLS allows you to maximize your counter space and enjoy the view while the TV is not in use.

INTERIOR

- * 13,500 BTU Ducted Air Conditioner with "Quick Cool"
- * 30 Amp Electrical Distribution Panel
- * 12 Volt, 55 Amp Converter
- * 30,000 BTU Auto-Ignition Furnace with Thermostat
- * Water Heater Bypass for Easy Winterization
- * Residential Cabinet Hardware
- * Large Picture Window at the Dinette
- * 6' 3" interior Slide Room Height
- * 12 Volt Slide Room Lights For Dry Camping
- * In Floor Ducted Heat
- * Central Monitoring System for all Tanks and Battery
- * Raised Panel Cabinetry

LIVING ROOM

- * Cable TV Hook-Up with Antenna and Signal Booster
- * Satellite Prep
- * High Grade Carpeting
- * Residential Fabric-Covered Valances With Removable Drapes
- * Angled Overhead Storage in the Slide Room
- * Home Theater DVD / CD / AM / FM / iPod Hookup
- * 110 / 12 Volt Air Bed Sofa with Drawer
- * 32" HD LCD Television

EXTERIOR

- * One Touch Electric Awning
- * Lockable, Radius Baggage Doors
- * Rear Bumper Storage
- * Easy Opening Triple Entry Step
- * E-Z Lube™ Axles
- * Large Folding Handle for Entry Assistance
- * Tough Guard Painted Skirt Metal
- * Rain Gutters and Spouts
- * Two 30 LBS LP Bottles with Automatic change-over
- * Roto-Cast Seamless Holding Tanks
- * Keystone Original "Spacemaker" 47 Gallon Fresh Water System.
- * 30 foot, 30 Amp Power Cord
- * Universal Docking Station with Hot and Cold Water
- * Exterior BBQ Hook-Up
- * Electric Front Jacks
- * Aluminum Wheels

KITCHEN

- * Solid Surface Corian® Counter Tops
- * Under mount Sink with Corian® Covers
- * 3 Burner High Output Gas Range
- * Full Extension Ball Bearing Drawer Guides
- * Metal High Arched Faucet
- * Range Hood with Exhaust Fan and Light
- * Microwave with Carousel
- * 17" Oven
- * Reversible Dinette Seat Cushions
- * Dometic Double Door Refrigerator
- * Overhead Cabinets Above the Sink
- * Oversized Pots and Pans Drawers

BEDROOM

- * Cable TV Hook-Up
- * High Grade Carpeting
- * Under Bed Storage
- * Color Matched Bedspread
- * Bedroom Reading Lights
- * Residential Style Mattress
- * Electrical Outlets Near Bed

BATH

- * Large Vanity Sink
- * Porcelain Foot Flush Toilet
- * Residential Medicine Cabinet with Mirror
- * ABS One Piece Tub Surround
- * Skylight over the Tub
- * Retractable Clothes Line in Shower/Tub
- * Reinforced Tub Support
- * Attic Fan
- * GFI Receptacles in the Bathroom

"CUSTOMERS FIRST" SAFETY PACKAGE

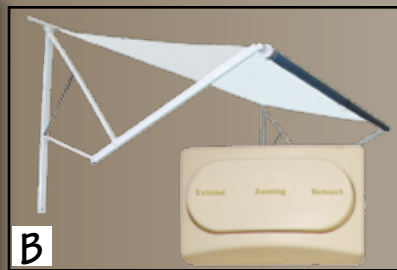
- * Tinted Safety Glass Windows
- * Dual Hitch Safety Chains
- * Manual Override for the Slide Rooms
- * Fire Extinguisher
- * Smoke Detector
- * Carbon Monoxide Detector
- * Egress Windows
- * LP Gas Leak Detector
- * Break Away Safety Brake
- * 4 Wheel Electric Brakes
- * Hitch Lights

"CAMPING MADE EASY" PACKAGE

- * Laminated Aluminum Framed Sidewalls
- * Enclosed Underbelly
- * Exterior Speakers
- * E-Z Lube™ Axles
- * Overhead Slide Room Cabinets
- * Skylight in the Shower
- * 6 Gallon Gas / Elect DSI Water Heater
- * Microwave
- * Oven
- * Illuminated light switches
- * 13.5 ducted air conditioner
- * DVD/CD/AM/FM/iPod Hook Up
- * Large Folding Grab Handle
- * Electric Front Jacks
- * Black Tank Flush
- * Retractable Clothes Line

POPULAR OPTIONS

- * Extra large Refrigerator
- * Wire and Frame for a Second A/C (Some Models)
- * 50 Amp Service (Some Models)
- * Spare Tire Kit
- * 10 Gallon Water Heater (Some Models)
- * Upgraded 15,000 BTU Air Conditioner
- * Free Standing Dinette with Four Chairs
- * Six Panel Refrigerator Front
- * Rear Ladder
- * Recliners in Place of Swivel Rockers (Some Models)
- * Second Swivel Rocker (Some Models)
- * 68" Air Bed Sofa in Place of Lower Bunk and Trundle (292FWBHS)



- A. LED Lighted EZ View Hitch Mirror.
- B. "Knee Action" Electric Awning Flexes in Moderate Winds. Adjustable arms tilt for water run off.
- C. Docking Station.
- D. 15" Aluminum Wheels.
- E. Radius Triple Entry Steps.
- F. Fully Enclosed Underbelly.
- G. Exterior Grab Handle for entry assistance.
- H. New Motion Detector Light.
- I. Spacious pass through storage with a 110 volt plug and television cable connection.



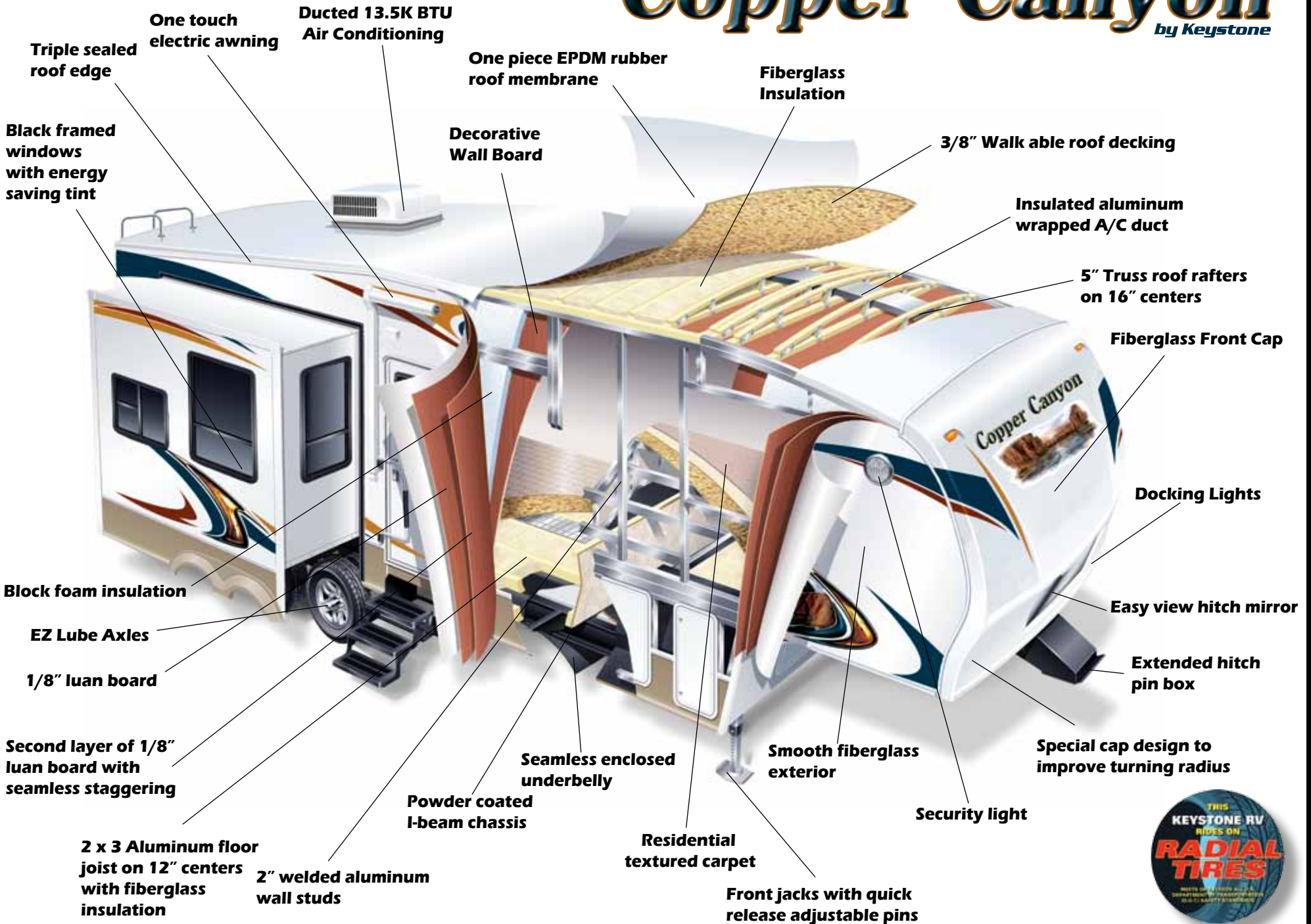
Your Copper Canyon 324FWBHS has an exceptional outdoor kitchen making enjoying the outdoors complete. No more going in and out of the main kitchen for dishes, utensils, and all the other items to cook outside. This unit is equipped with a 4.6 cu ft refrigerator, spacious overhead cabinet storage, drawers for your silverware. The space contains 110 volt receptacles, a sink with hot and cold water.

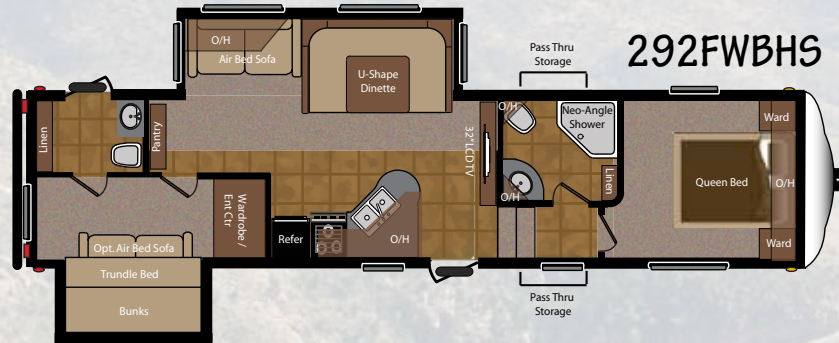
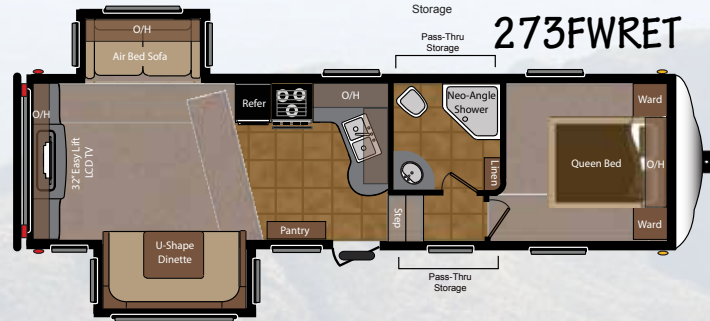
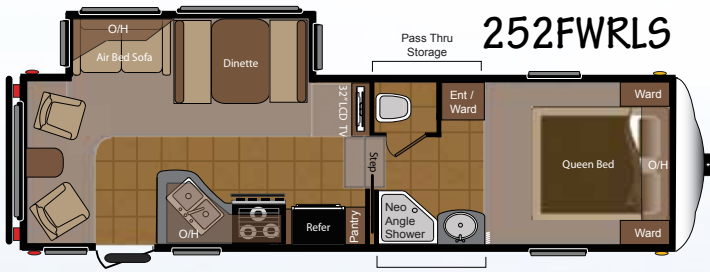


Sprinter's front cap design allows short bed trucks with extended cabs to turn an additional 30% without making contact with the front cap.

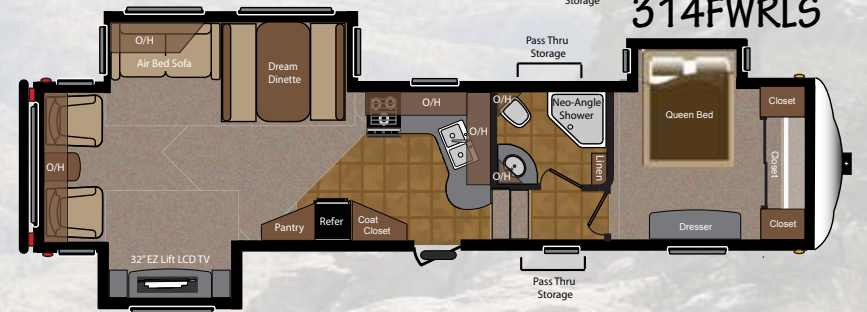
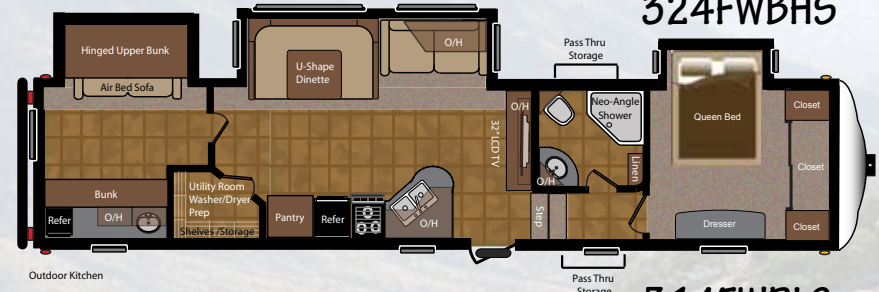
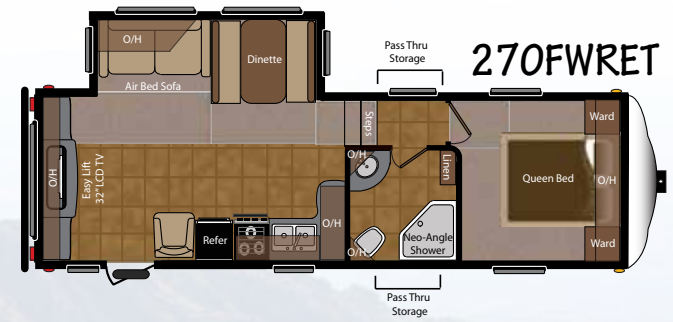
Copper Canyon

by Keystone





This camera symbol appears on the keystone-sprinter.com web site next to the floor plans. Click on the camera to view snap shot photos of the inside of the unit.



Fifth Wheels	252FWRLS	270FWRET	273FWRET	292FWBHS	314FWRLS	324FWBHS
Shipping Weight	7368	6990	7716	9095	9555	10'580
Carrying Capacity	2752	3050	2524	2655	1250	3600
Hitch	1320	1240	1400	1620	1920	2160
Exterior Length	28' 11"	28' 8"	30' 11"	34' 7"	36'	38' 6"
Exterior Width	8'	8'	8'	8'	8'	8'
Ext. Hgt. - A/C Top	12'	12'	12'	12'	12' 10"	12' 8"
Fresh Water	44	47	47	47	47	47
Waste Water	32	32	32	64	32	32
Grey Water	64	32	32	64	32	32
LPG Capacity	60	60	60	60	60	60
Tire Size	225/75R15D	225/75R15D	225/75R15D	225/75R15D	225/75R15E	225/75R15E

Copper Canyon

by Keystone

Reasons to Purchase from Your Local Dealer

When you purchase locally, you'll receive a full product orientation at time of delivery. In addition, you'll be introduced to your local dealership's service, parts and warranty staff who will be there should you ever need them. Many dealers put their purchasing customers first when it comes time to getting the coach serviced. Don't underestimate the value a local dealer can add to the enjoyment of your RV experience.



**2642 Hackberry Drive
PO Box 2000
Goshen, IN 46526
574-535-2100**



Product information is as accurate as possible as of the date of publication of this brochure. Features, floor Plans and specifications are subject to change without notice. Please also consult Keystone's website at keystonerv.com for more current product information. **Tow Vehicle Disclaimer:** Owners of Keystone Recreational Vehicles are solely responsible for the selection and proper use of tow vehicles. All customers should consult with a motor vehicle manufacturer or their dealer concerning the purchase or proper use of suitable tow vehicles for Keystone products. Keystone disclaims any liability or damages suffered as result of the selection, operation, or misuse of a tow vehicle. KEYSTONE'S LIMITED WARRANTY DOES NOT COVER DAMAGES TO THE RECREATION-AL VEHICLE OR THE TOW VEHICLE AS RESULT OF THE SELECTION, OPERATION, USE OR MISUSE OF THE TOW VEHICLE. January 2011.