

COUGAR: Fifth Wheels and Travel Trailers



Cougar

BY KEYSTONE



EASTERN EDITION

BY KEYSTONE
Cougar

www.keystone-cougar.com



WHERE LUXURY & LIGHTWEIGHT MEET



327RES BEDROOM



PORCELAIN FOOT FLUSH TOILET



EXCLUSIVE TO COUGAR:
COMFORT CAMP II PILLOW TOP MATTRESS

IT IS OUR GOAL TO GIVE EVERY COUGAR A RESIDENTIAL LOOK AND FEEL WITH ADDED FEATURES THAT YOU AND YOUR FAMILY WILL APPRECIATE.

- Large Bathroom Sink
- Porcelain Foot Flush Toilet
- Residential Bedroom and Bathroom Door Heights
- LED Vanity Mirror Lights
- Residential Comfort Camp II Pillow Top Mattress
- Unbeatable Wardrobe Storage
- Large Vanity Mirror

Residential Look and Feel



**LOOK FOR WALK
AROUND VIDEOS
ON OUR WEBSITE!**

Cougar
BY KEYSTONE

THE COUGAR OTTOMAN

Cougar's one of a kind ottoman functions as a foot rest, storage area, coffee table or even as a sofa extension.

Having guests? Simply slide the ottoman under the sofa and fold out the air mattress hide-a-bed for a great night's sleep.



327RES (SHOWN IN SEDONA SUEDE DECOR)

THE 327RES HAS QUICKLY BECOME ONE OF OUR MOST POPULAR MODELS.

The interior boasts an abundance of storage space and its residential elegance is topped off by extra large windows (all of which open for cross ventilation).



AVAILABLE ON THE
COUGAR 327RES



Storage, Comfort and Convenience

Cougar
BY KEYSTONE



325SRX LIVING AREA (SHOWN IN AUTUMN NIGHT DECOR)



COUGAR 325SRX GARAGE



ADJUSTABLE RAMP LEGS

Part of what has made Cougar such a success over the years is our ability to incorporate customers wants and needs into a variety of floorplans. The Cougar 325SRX combines a garage model fifth wheel with a residential main living area. This creates the perfect unit for a variety of hobbies.

Variety



LOOK FOR WALK
AROUND VIDEOS
ON OUR WEBSITE!



327RES KITCHEN

COUGAR "EXECUTIVE CHEF KITCHEN" INCLUDES:

- ① Countertop Extension - Most Models
- ② Sink Covers
- ③ Dedicated Trash Can Storage
- ④ Large Countertop
- ⑤ 22" Oven
- ⑥ Easy to Reach Microwave Oven
- ⑦ Solid Cherry Wood Cabinet Doors and Drawers
- ⑧ Gas Struts on Overhead Cabinet Doors
- ⑨ 8 Cubic Foot Refrigerator - N/A on 1/2 Ton Series
- ⑩ Best in Class Pantry Storage
- ⑪ Full Extension Drawer Guides
- ⑫ Utensil Drawer - All Models
- ⑬ Pots and Pans Drawers - Most Models



KITCHEN STORAGE



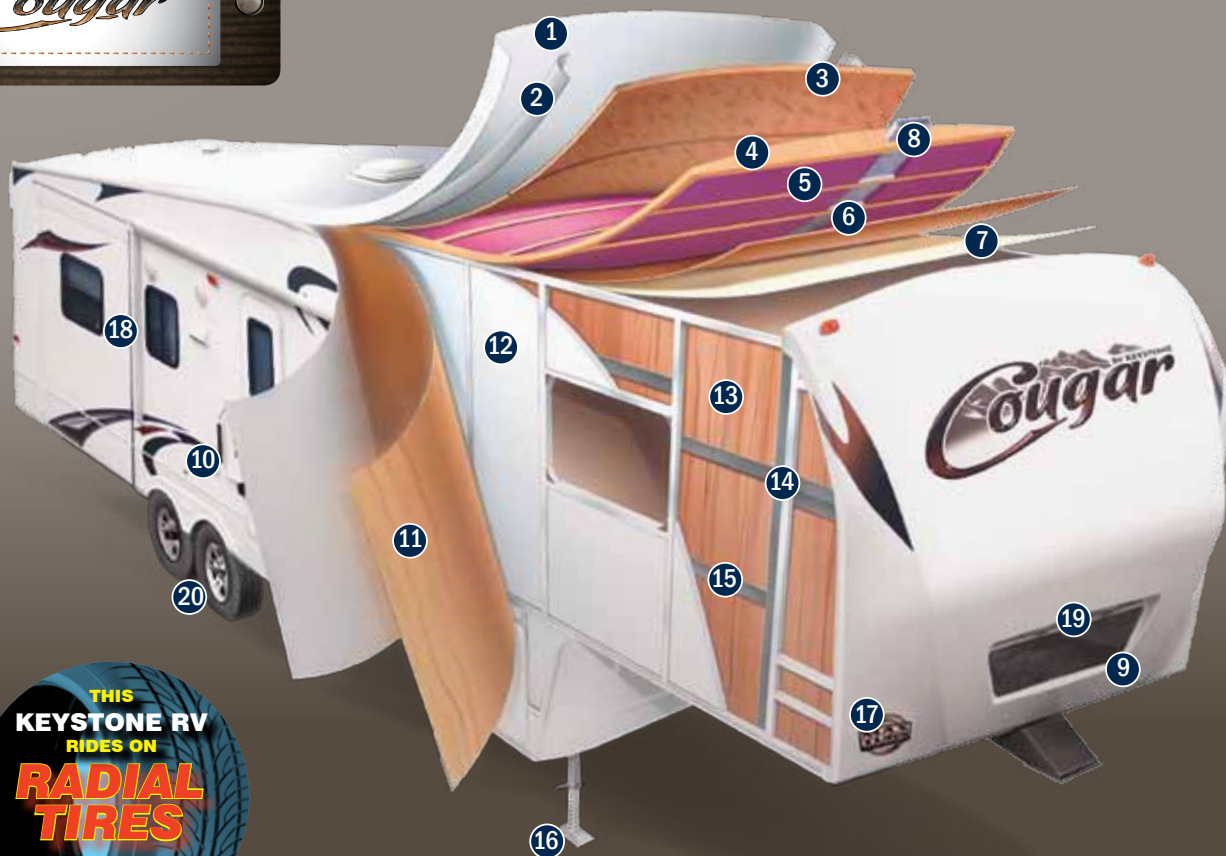
Cougar's commitment to having the **best storage in its class** is evident in the deep pots and pan drawers as well as our large easy to reach pantries.



COUGAR FIFTH WHEELS HAVE SET A HIGHER STANDARD WITH **BEST IN CLASS** PASS THROUGH STORAGE.

Maximum Storage Capacity

Cougar
BY KEYSTONE



(5-SIDED ALUMINUM SUPER STRUCTURE)

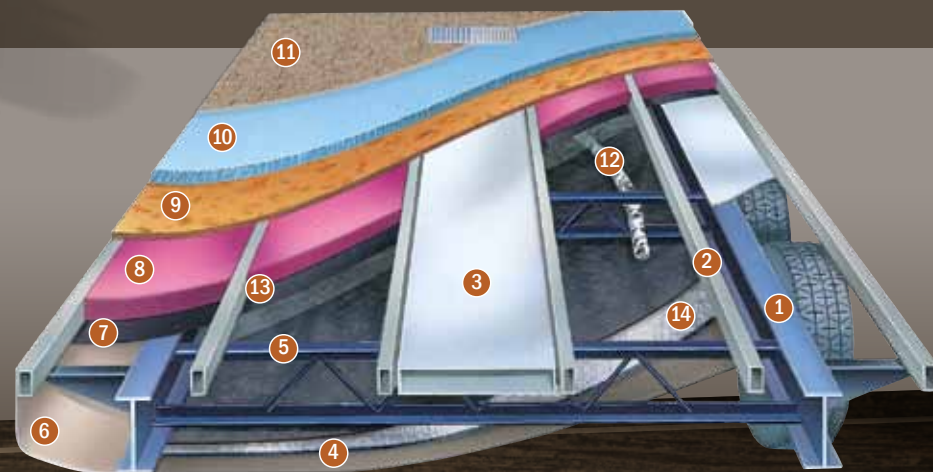
- ① One-piece EPDM rubber roof membrane with 12 year warranty
- ② Radius roof transition molding
- ③ 3/8" roof decking
- ④ 5" fabricated rafters on 16" centers
- ⑤ Fiberglass insulation (R-14)
- ⑥ Ceiling decking Luan backer
- ⑦ Vinyl ceiling panel
- ⑧ Triple insulated, foam-core air conditioning duct
- ⑨ Hitch Vision (Patented)
- ⑩ Gel-coated Filon® fiberglass sidewall
- ⑪ 1/8" Luan board (second layer in select models)
- ⑫ Solid block foam insulation (R-9)
- ⑬ Interior decorator board
- ⑭ 2" welded aluminum wall studs
- ⑮ Electro-galvanized sheet (EGS) metal backing strips
- ⑯ Easy access adjustable snap jack pins
- ⑰ Increased "Max Turn" turning radius
- ⑱ Tinted safety glass windows
- ⑲ Docking lights
- ⑳ E-Z lube axles

THIS
KEYSTONE RV
RIDES ON
**RADIAL
TIRES**

MEETS OR EXCEEDS ALL U.S.
DEPARTMENT OF TRANSPORTATION
(D.O.T.) SAFETY STANDARDS

FLOOR (R-14) + (R-15)

- ① 8" and 10" Steel "rolled" I-beam
- ② 3" Welded aluminum floor joists
- ③ 3" Large-capacity insulated heat duct
- ④ 1/4" Enclosed underbelly
- ⑤ Welded steel cross members
- ⑥ Full radius wrap aluminum enclosure
- ⑦ Moisture barrier
- ⑧ Fiberglass insulation (R-14)
- ⑨ 5/8" Seamless floor decking
- ⑩ Carpet padding
- ⑪ Residential-grade carpeting with stain protectant
- ⑫ 2" Heat duct from furnace into underbelly
- ⑬ Heated, enclosed water lines
- ⑭ Astro-Foil insulation barrier (R-15)



Cougar Construction



PATENTED
**HITCH
VISION**
"NO LOOKING
BACK"

COUGAR "HITCH VISION"

Hitch Vision moves the dial forward in what customers expect from an RV. There's no looking back!

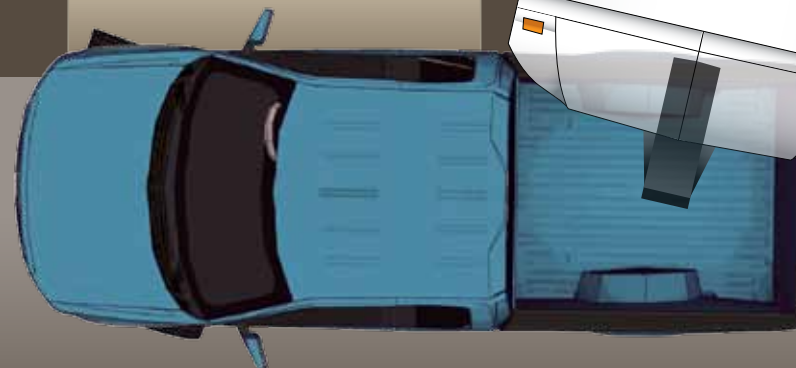
Hitch Vision gives the fifth wheel user complete confidence to back up and align their truck to Cougar's extended hitch pin using only the built-in mirror for guidance. Dual automotive LED docking lights, which can be controlled by the E-Z Camp Cougar Remote, allow you to load or unload camping gear day or night. (Hitch Vision also comes in handy when using the E-Z Camp Cougar Remote to raise and lower landing gear.)

Once you've used Hitch Vision, "there's no looking back" to the inconvenience of turning or straining to see your fifth wheel.



MAX TURN

The Cougar Max Turn Cap coupled with our heavy duty extended hitch pin makes turning and maneuvering a breeze.



LOOK FOR WALK
AROUND VIDEOS
ON OUR WEBSITE!

Advancing the Industry

By Keystone
Cougar

DSI

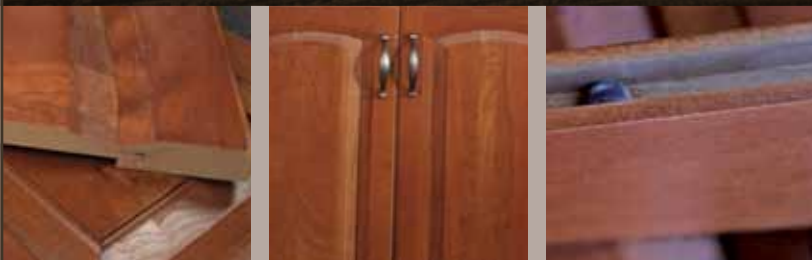
Annual RVDA DEALER
SATISFACTION INDEX



COUGAR HAS EARNED THE DSI AWARD AN UNPRECEDENTED 3 YEARS IN A ROW!

THE DSI (DEALER SATISFACTION INDEX) AWARD RATES THE LEVEL OF SATISFACTION THE DEALERS HAVE IN A MANUFACTURER. IT RATES MANUFACTURERS IN MANY AREAS SUCH AS: PRODUCT DESIGN, PRODUCT RELIABILITY & QUALITY, WARRANTY SUPPORT, AND PARTS SUPPORT.

SELECT GRADE CHERRY WOOD



At Cougar we are always trying to think of new ways to add value. With the new "Cougar Cherry" cabinet doors we were the first in our class to use true select grade cherry wood on all our doors and drawers. We also use teflon spacer balls in all of our cabinet doors to prevent warping, bending and cracking.

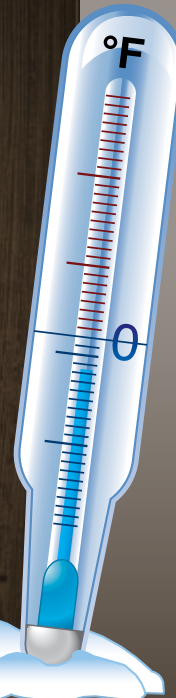
**POLAR
PACKAGE
PLUS**



ZERO° DEGREE TESTED

Cougar has been zero degree tested. The Polar Package Plus allows you to camp to zero degrees without worry of your tanks or water lines freezing up.

We also add upgraded insulation to our slide-out floors to control the hot and cold exchange and unlike our competition we merge our skirt metal to the I-Beam for complete enclosure of your fifth wheel underbelly.



CONTROL EVERYTHING WITH THE COUGAR E-Z CAMP REMOTE



Docking Light



Landing Gear



Electric Slide Out



High Emittance
LED Flashlight



Electric Awning

Cougar Command Center features back lighted switches and conveniently places all of your controls in one place.



Cougar comes outfitted with a black tank flush hook-up. This feature keeps the black tank clean and trouble free.



Cougar

Equa-Flex Suspension comes standard on all Cougar fifth wheels.



32" LCD TV
BEST IN CLASS
WITH SWING ARM



Cougar slide-outs feature solid hardwood fascia.



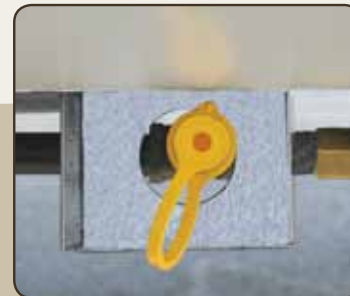
Another Cougar first: The rear storage rack provides a quick slide-away storage alternative. (N/A on certain floorplans)



The Cougar docking station conveniently locates and protects your outside hook ups for quick and easy set up. (FW only)



Cougar's sofa converts into an air mattress bed easily inflated and deflated by an electric pump. The Cougar hide-a-bed also includes an extra large storage drawer.



Cougar provides an outside LP gas hook-up standard on all models.



Cougar uses the largest picture windows in its class with both day and night shades for privacy any time.

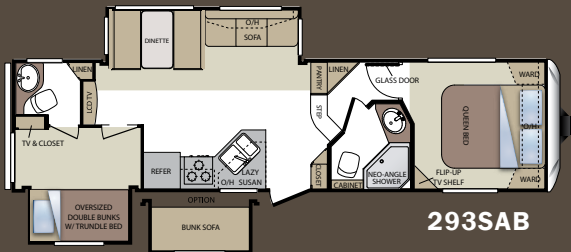
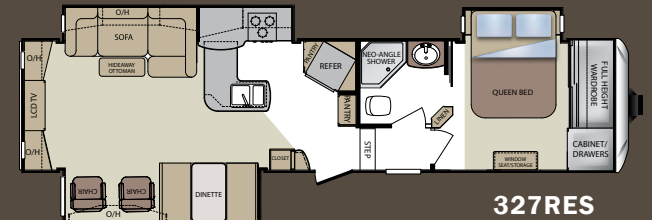
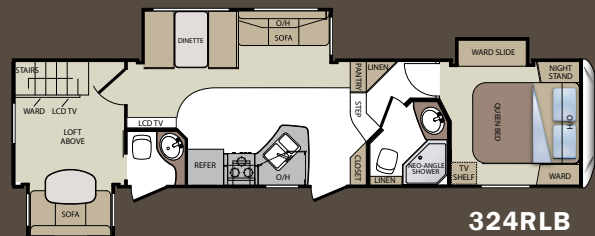
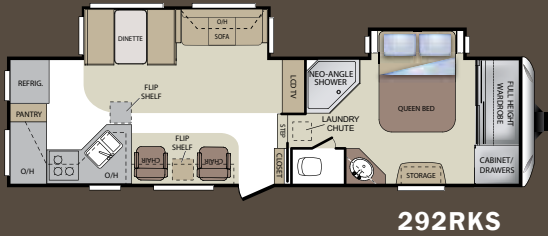
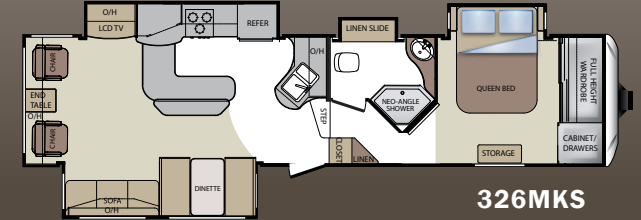
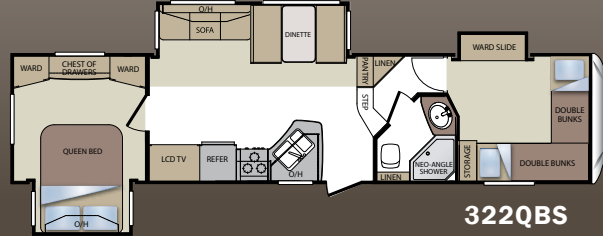
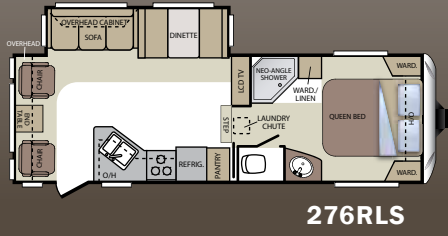
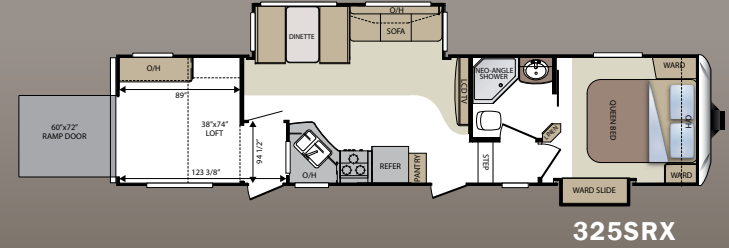
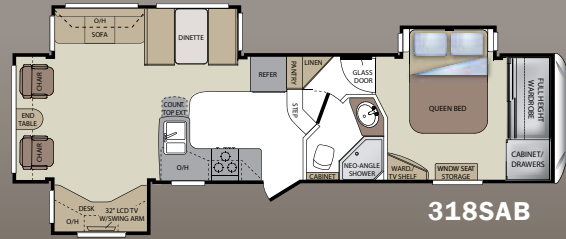
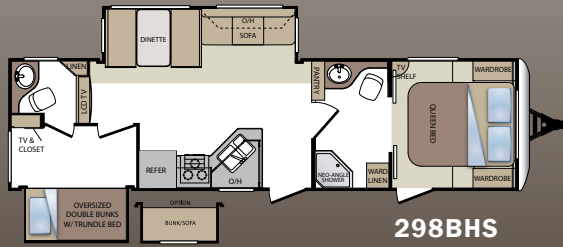


The Cougar Advantage

Cougar
BY KEYSTONE

TRAVEL TRAILERS

FIFTH WHEELS



TRAVEL TRAILERS

FIFTH WHEELS

MODEL	298BHS	302RLS	245RKS	276RLS	292RKS	293SAB	318SAB	322QBS	324RLB	325SRX	326MKS	327RES
Shipping Weight	7900	7642	6542	7212	8555	8831	9210	9489	10133	9270	9920	9950
Carrying Capacity	2975	2033	3313	2968	3230	2704	2445	2371	1782	2930	2045	1995
Hitch	715	875	1055	1380	1625	1375	1525	1460	1515	1800	1565	1545
Length	34' 8"	33' 9"	26' 3"	28' 9"	33'	33' 5"	34' 7"	36' 6"	36' 3"	36' 7"	36' 2"	36' 5"
Height	11' 4"	11' 2"	11' 8"	11' 8"	12'	12'	12'	12'	13'	13'	12'	12'
Fresh Water	60	60	60	60	60	60	60	60	60	60	60	60
Waste Water	38	38	38	38	38	76	38	38	76	38	38	38
Gray Water	76	76	76	76	76	76	76	76	76	76	76	76
Awning Length	17'	17'	16'	19'	19'	17'	16'	17'	17'	17'	12'	12'

VIEW SNAPSHOT PHOTOS OF FLOORPLAN INTERIORS AT WWW.KEYSTONE-COUGAR.COM

STANDARDS, OPTIONS AND DECORS

COUGAR STANDARDS

- Residential porcelain toilet with foot pedal
- EZ lube hubs on axles (all models)
- Snap jack pins (all Fifth Wheels)
- All Fifth Wheel models at or under 12' exterior height (except 324, 325)
- 30,000 BTU furnace
- One-piece seamless rubber roof
- All windows in main slide out open
- Cherry wood cabinet doors
- Solid hardwood slide fascia

"CAMPING IN STYLE"* PACKAGE

- Day and Night Shades
- Laundry chute (some models)
- Black trim safety glass windows (tinted to keep the sun out)
- Microwave oven with turn style
- Aluminum framed sidewalls, floor, front and rear walls, slide rooms
- 13,500 BTU air conditioner
- Raised-panel cabinet doors
- Cougar Comfort Camp II - Pillow Top Mattress

VALUE PACKAGE*

- True home CD/DVD system with speakers and separate zones (12-Volt compatible); MP3 player hookup on stereo
- Gas/electric water heater with quick recovery
- Residential shower/tub surround
- TV antenna
- Satellite/Cable hook-up
- Gel coated Filon® fiberglass
- Full walk-on roof
- Fiberglass walls
- Rear stabilizer jacks
- Equa Flex Suspension
- Max Turn Technology front cap (fifth wheels only)

CONVENIENCE PACKAGE

- Outside shower*
- Residential refrigerator front*
- Spare tire*
- XL grab handle*

SAFETY MUST-HAVES*

- Manual backup on all main slide outs
- T-mold bulb seals on all slide outs to keep slider sweeps on your slide out (stays on in hot weather)
- LP sensor
- Smoke detector
- Fire extinguisher
- Carbon monoxide detector

DRY CAMPING FEATURES

- 12 Volt stereo/MP3 compatible
- Large fresh, gray & black tanks (all models)
- All slide-out lights are 12 Volt
- Space for dual batteries
- Under 12' exterior height (most models)
- Entire underbelly enclosed to keep debris off tanks, water lines, etc.
- All lights 12V compatible

COUGAR OPTIONS

- 32" LCD TV (fifth wheels only)*
- Outside speakers*
- Black tank flush*
- Electric awning*
- Cougar remote*
- Entertainment storage hook-up (fifth wheels only)*
- Outside LP quick connect*
- Radial tires*
- Polar Package Plus*
- 8 cu. ft. refrigerator* (292, 293, 318, 322, 324, 325, 326, 327 only)
- 16" wheels* (292, 293, 318, 322, 324, 325, 326, 327 only)
- Dual pane windows
- 19" LCD TV (324, 322, 325)*
- Slide in/out bike/storage rack (N/A on 245, 276 and 325)
- Air mattress sofa with storage

- Swivel rocker (276, 292, 302, 318, 326, 327)
- Second swivel rocker
- Free standing dinette
- 15,000 BTU A/C
- Aluminum wheels
- Recliners (327, 318, 326, 292 only)

* Mandatory option



DARE TO COMPARE

- #1 selling fifth wheel in its class (9 years in a row)
- Highest trade-in and resale value in the industry on average
- Hitch Vision (patented) front cap with docking lights & Max Turn Technology (FW only)

- Exclusive factory installed bike/storage rack on most Fifth Wheels and Travel Trailers
- Fully enclosed, underbelly with heated and enclosed dump valves
- 16.2 Gallons per hour - quick recovery water heater (great for bunkhouses)
- Oversized pass-thru storage doors
- Slide out seal is mounted in a "T" track (no sticky tape to hold slide seals on)

- Extra large slide-out windows open for cross ventilation
- Panoramic picture window at all dinettes
- Day/night shades
- Porcelain foot flush toilets
- Five side welded aluminum super structure
- R-9 sidewall, R-14 roof, R14+R15 floor insulation and R-15 astro-foil in the slide out
- Fully ducted air conditioning featuring triple insulated, foil wrapped, light weight ducts

- 12 Volt compatible for dry camping
- Outside docking station (FW only)
- Back lit inside command center (most FWs)
- True cherry wood cabinet doors
- Cougar remote with flashlight
- Polar package plus
- Full extension drawer guides
- Black tank flush



LOOK FOR WALK AROUND VIDEOS ON OUR WEBSITE!

Discover Which Options are Right for You