

Summer[®]
2003

Check out the 2003 Itasca Suncruiser. You'll quickly see why it's the best selling Itasca motor home.

Years of extensive research have made the Suncruiser a consistent favorite among motor home enthusiasts. Not ones to rest on our laurels, we continue to improve on these already user-friendly designs. The 2003 Suncruiser offers even more new, innovative features such as the BenchMark™ Full Comfort Dinette and a unique, multi-purpose table that helps you make the most of your interior living space. New, front-end exterior styling, taller valance panels and a one-piece, rear fiberglass cap provide an enhanced appearance.

Expanded Ford® and Workhorse™ chassis offerings are new for 2003, including a 22,000 lb. GVWR Workhorse chassis with 22.5 inch tires.

With countless user-friendly features and abundant storage both inside and out, the 2003 Itasca Suncruiser is one motor home that exceeds even the highest of expectations.

Suncruiser
2003



38G FERN GARDEN

STOREMORE

RELAX WITH ALL THE COMFORTS OF HOME. The StoreMore slideout system expands to create an invitingly spacious living area and to allow for more comfortable furnishings, including the Rest Easy™ Multi-Position Lounge. Spacious cabinetry, in three woodgrain choices, provides easy-to-use storage, and cabinet doors feature a highly durable catalyzed finish for a rich, elegant appearance usually reserved for exclusive home cabinetry. Enjoy advanced climate control with the TrueAir™ Residential Central Air Conditioning System. It delivers cool air evenly throughout the coach with adjustable ceiling vents. The available Home Comfort Plus Package includes a heat pump that helps take the chill off cool mornings without starting the furnace. Dual-glazed windows increase thermal efficiency and include day/night pleated shades for variable levels of light and privacy.

INTERIOR DECORS

IVORYWOOD



FERN GARDEN



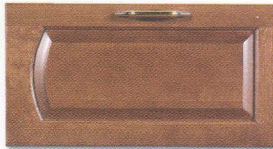
CRYSTAL LAKE



PORTSMOUTH OAK
WOODGRAIN



CONCERT CHERRY
WOODGRAIN



WASHED MAPLE
WOODGRAIN





THE GALLEY IS LOADED WITH USER-FRIENDLY FEATURES that make preparing a meal or a quick snack a breeze. It comes standard with an Amana® three-burner range with oven and a 30" residential microwave with a sensor cook feature. A microwave/convection oven is also available. A large, solid-surface counter-top is extremely durable and cleans easily, while the flip-up extension (NA 37C) provides plenty of work space. The stain-resistant composite sink is sized to accommodate large plates and pans. The single-control faucet includes a pull-out sprayer for added convenience.



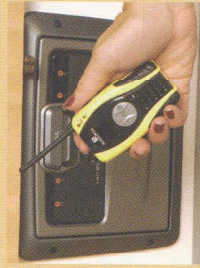
FOR ADDED COLD STORAGE, choose the available four-door refrigerator. It includes an icemaker for your convenience. An icemaker is also available with the large double-door refrigerator.



NATURAL LIGHT from the overhead skylight accents the open, airy feeling of the bath area. Convenient standard amenities include a single-control shower faucet, residential-height toilet with foot-pedal flush, powered/roof-mounted fan and plentiful storage.



YOU'LL LOVE THE FLEXIBILITY of the hoop-base lounge chair. This cozy rocker is also a comfortable recliner with a footrest. And perhaps best of all, it can be easily positioned to your favorite spot when you're not traveling. Select the available UltraLeather HP™ for an added touch of luxury.



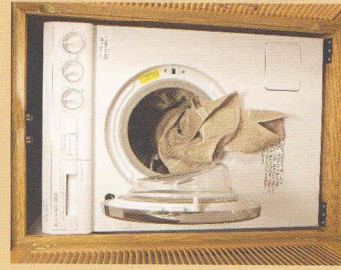
range and recharge from the coach's house batteries at their built-in charging station. The nickel-metal hydride batteries provide up to 15 hours of standby and 90 minutes of talk time per charge.



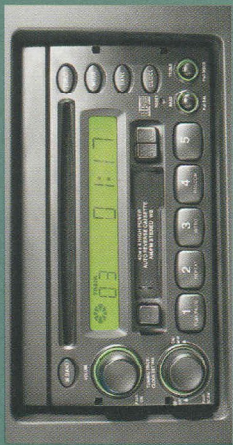
HANDY, AVAILABLE FEATURES such as the rechargeable flashlight, hand-held vacuum and two-way radios are located in the easily accessible convenience center.



THE WALL-MOUNTED HAIR DRYER, located in the bathroom, includes a night-light for added convenience.



DO YOUR LAUNDRY ANY TIME with the combination washer/dryer, available in the 37C and 38G.

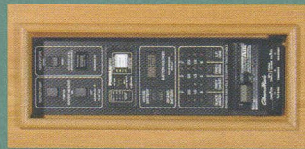


Itasca owners are raving about the RV Radio. Bigger buttons, more features and a larger display make it one of our most talked-about innovations. AM/FM stereo, cassette deck and CD player are all included. There's even a built-in weather band to keep you informed of travel conditions when you're on the road.



Keep your electrical system running smoothly even when operating your central air conditioning on

30-amp, shoreline power. The PowerLine™ Energy Management System monitors onboard 110-volt electrical usage and automatically minimizes the nuisance of tripped campground circuits by controlling the operation of postponable electrical loads during periods of heavy usage. As demand is lowered, PowerLine automatically returns power to the secondary appliances and systems.



Eliminate the run-around with the OnePlace Systems Center. It brings together frequently used switches, gauges and controls in one convenient location so you can easily check and operate important systems from one central location.



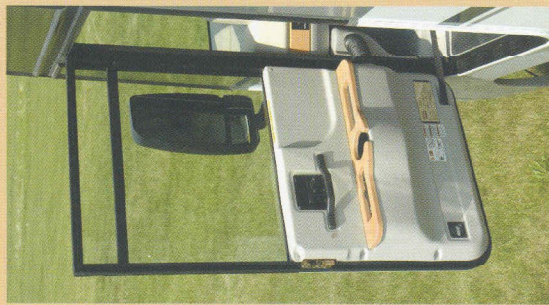
Adjust the volume to your satisfaction with individual speaker volume-control knobs. They're located below the overhead lounge cabinets. (NA with Deluxe Sound System)



ARRIVE REFRESHED after a long drive thanks to the high-back premium cab seats. They incorporate multi-position armrests as well as swivel, slide and recline features so you can adjust them to the position that fits you best. Enhance your ride even further by selecting the 6-way power pedestal, available for both the driver and passenger seats. Cab seats with the UltraLeather HP upgrade also include adjustable lumbar support.



STAYING IN FOR THE EVENING? Enjoy a variety of entertainment options starting with the standard 25" TV. You can also choose the available VCR, DVD player and digital satellite dish to ensure that you'll never have to go without your favorite programs or movies. Enjoy theatre-quality sound from the available Deluxe Sound System with 5-channel QSurround™ sound. This feature also includes the TV and VCR stereo upgrades. Select the available 300 watt inverter to enjoy these features even when you're not connected to shoreline or generator power.



THE DRIVER'S SIDE DOOR is a convenience you won't find in all Class A motor homes. The trim panel incorporates a deep cupholder and power mirror controls.



DRIVER'S CONTROLS ARE CONVENIENTLY LOCATED at your fingertips in the ergonomic cockpit area. The dash features large, easy-to-read switches and gauges that are sized for easy operation. The standard, dash-mounted electronic compass is a helpful navigation tool that even displays exterior temperature at the touch of a button. An available Sony® rearview monitor system includes a one-way audio feature for ease in backing and maneuvering.



THE AVAILABLE WORKSTATION provides a perfect surface for using a laptop computer or writing postcards. It slides toward the passenger at their convenience and includes a storage compartment below.



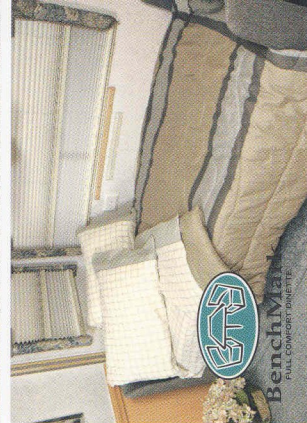
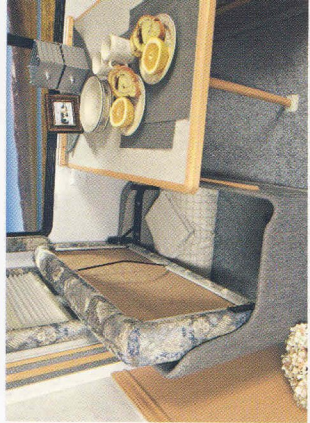
38G FEEN GARDEN

A REAR SLIDEOUT IS STANDARD on every model, creating a spacious bedroom with a walk-around queen-size bed with Serta® mattress and a full-size wardrobe. The 38G, shown here, even includes two cedar wardrobes for his and her hanging storage. Additional storage can be found in the bedside nightstands, overhead cabinetry and in the underbed compartment.



38G FEEN GARDEN

ANOTHER SMART SUNCRUISER FEATURE is this handy bedroom desk/vanity area. Conveniences such as a large desktop, a tip-up storage area, an additional phone/modem jack and a folding chair are all included. Other residential bedroom features include a tip-out hamper, sliding mirrors, built-in 19" color TV and an alarm clock.



THE NEW BENCHMARK™ FULL COMFORT DINETTE is another Wimmebago Industries exclusive. It features seats with an inner-spring design for complete residential style and comfort. The seats also lift up to reveal large, easy-to-access storage. BenchMark even converts to a truly comfortable bed. (NA 37C)



REST EASY MULTI-POSITION LOUNGER

It starts as a plush couch with a convenient flip-down center cushion that doubles as a beverage tray with dual drink holders and a storage area.



Touch a button and it becomes a relaxing recliner with a pull-out ottoman.



Touch the button again and it's a contoured 75" x 60" bed.

THE REST EASY MULTI-POSITION LOUNGER PROVIDES UNMATCHED SEATING FLEXIBILITY AND COMFORT.



YOU'LL HAVE PLENTY OF OPTIONS with this available, multi-function table. It provides dining for two, expands to seat four or can be used for a computer or working on a hobby. (Available in the 37C and 38G)

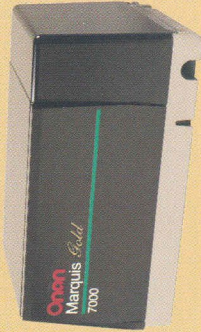


THE ELEGANT DINING TABLE provides spacious dining for two and easily expands to accommodate guests. It comes standard on the 37C and 38G and can replace the dinette on all other models.

BUILT-IN RAIN GUTTERS are incorporated into the awning rails to channel rainwater away from the sidewalls, entrance door and windows, helping keep the exterior clean and streak free.



FOR AUXILIARY POWER without the noise, the Sunranger features a 5,500 watt Onan® Marquis Gold™ generator. It's the quietest generator in its class and features digital voltage regulation and self-diagnostic capability for quick troubleshooting. A 7,000 watt Onan Marquis Gold generator is also available.



ESCAPE FROM THE SUMMER HEAT into the precision climate control provided by the TrueAir Residential Central Air Conditioning System. Powered by a Coleman®-Mach® central cooling unit, TrueAir offers superior environmental control throughout the coach. The cooling unit is located in the basement to provide a lower vehicle profile, reduce noise and eliminate roof runoff from A/C related condensation. It is also much easier to service and provides a lower center of gravity than roof pod units. A heat pump is also available to help warm your coach on cool mornings without starting the furnace.



ONE KEY OPENS MOST DOORS AND COMPARTMENTS, thanks to the convenient KeyOne™ System. The key is double-bitted to fit easily into the lock no matter which way it is inserted.

ACCESS TO STORED GEAR IS ALWAYS CONVENIENT with the hydraulically-powered StoreMore slideout system. StoreMore allows exterior compartments to extend with the slideroom for easy access. A Winnebago Industries original, it is still the industry's premier slideout system. StoreMore exterior compartments are also designed to accommodate large or odd-shaped items so you can bring along your golf clubs or even a folding ladder. Compartment doors incorporate single-paddle latches and gas struts for easy opening.



KEEP SAND AND MUD OUTSIDE with the exterior wash station. The same heated compartment also houses the major plumbing connections and service points for added convenience.

SATELLITE READY. Every Suncruiser comes prewired for the available digital satellite dish that can be installed now or added later.



AN EXTERIOR ENTERTAINMENT CENTER lets you listen to your favorite music as you enjoy the great outdoors. It includes two speakers, a 12-volt powerpoint, TV jack and a removable TV table. Choose from the standard AM/FM stereo with cassette or available CD.

AN EXPANDED VIEW is yours with the exterior mirrors. They feature large flat and convex surfaces, and electric defrost for increased visibility and safety. Adjusting for individual driver preference is easy with the electric controls.



ENTER AND EXIT WITH CONFIDENCE. Large interior and exterior assist handles provide stable hand holds for entering or exiting.



SUNCRUISER EXTERIORS



LIGHT SILVER METALLIC

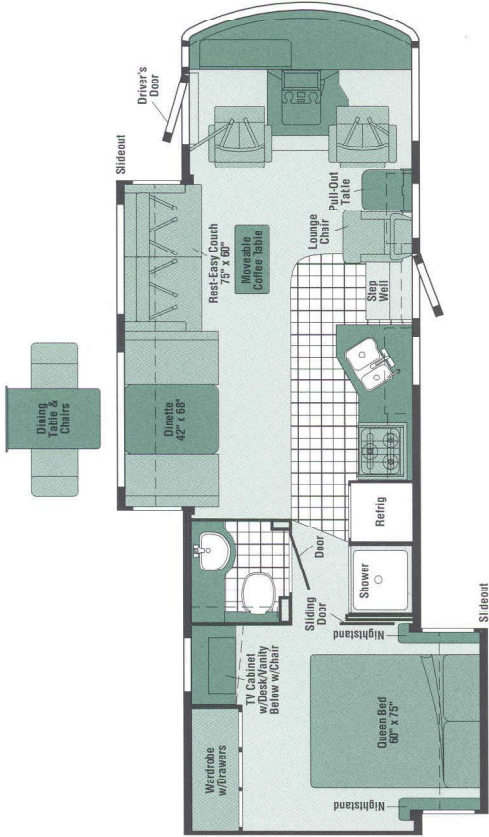


AGUAR BLUE METALLIC

SUNCRUISER FLOORPLANS

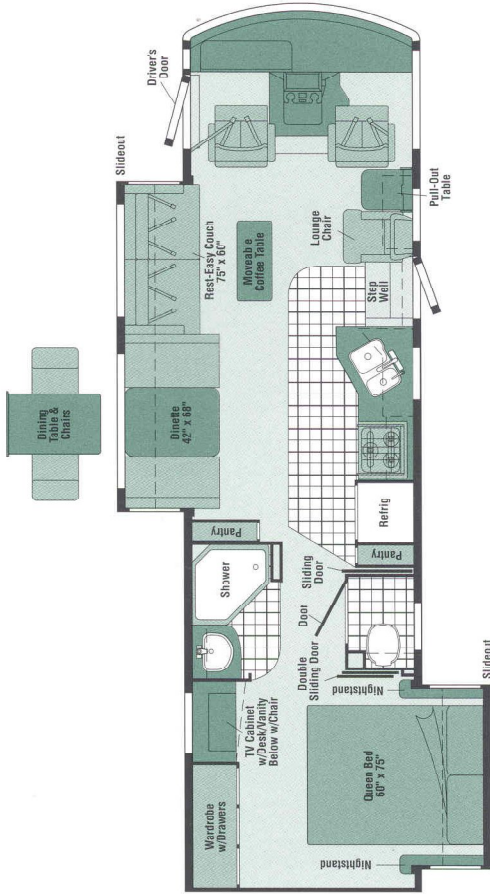
31Y

- Couchy/dinette **STOREMORE** slideout system
- Rear bedroom slideout w/ large wardrobe & desk/vanity area
- Moveable hoop-base lounge chair
- Split-bath design
- **REST EASY** Multi-Position Lounge



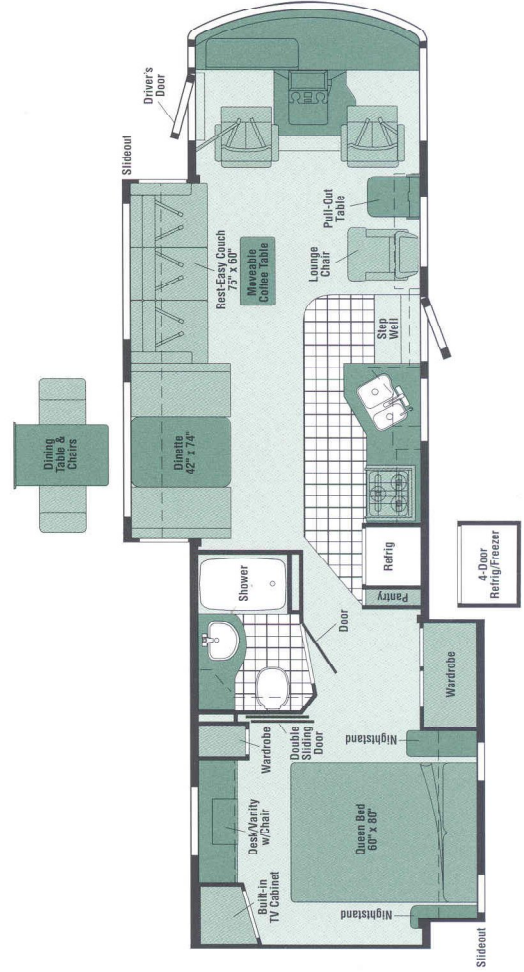
33V

- Couchy/dinette **STOREMORE** slideout system
- Rear bedroom slideout w/ large wardrobe & desk/vanity area
- Split-bath w/ private toilet area
- Dual pull-out pantries in galley area
- **REST EASY** Multi-Position Lounge



35U

- Couchy/dinette **STOREMORE** slideout system
- Rear bed/wardrobe slideout w/ large vanity area and built-in TV
- Moveable hoop-base lounge chair
- **REST EASY** Multi-Position Lounge

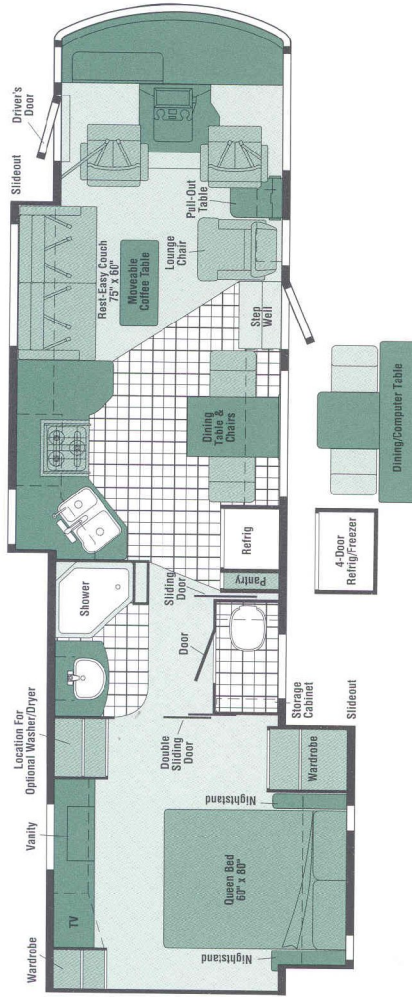


NEW

AVAILABLE JANUARY 2003

37C

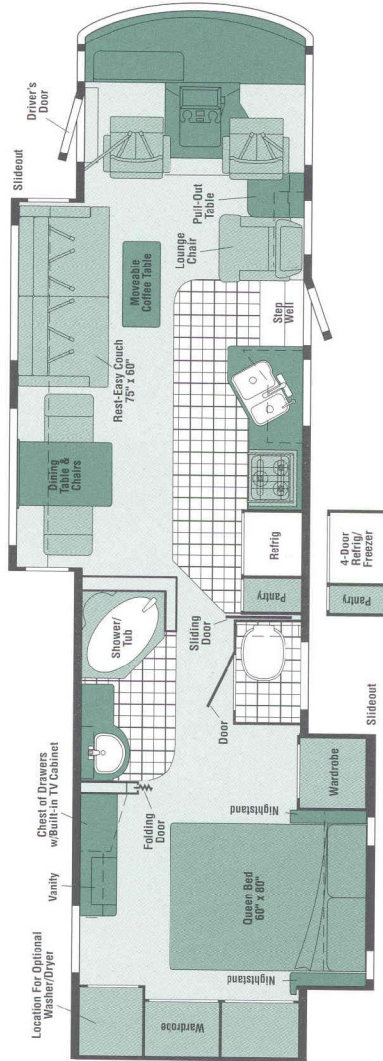
- Couch/galley **STOREMORE** slideout system
- Rear bed/wardrobe slideout w/ large vanity
- Spacious split bath area w/ shower and private toilet area
- Available washer/dryer
- **REST EASY** Multi-Position Lounge



NEW

38G

- Couch/dining table **STOREMORE** slideout system
- Rear bed/wardrobe slideout w/ large vanity area and built-in TV
- Moveable hoop-base chair
- Available washer/dryer
- **REST EASY** Multi-Position Lounge



SEAT BELTS



VINYL TILE FLOORCOVERING

Note: Dimensions shown are for sleeping space only and may vary due to styling. Dashed lines denote overhead storage areas.

WHERE STYLE MEETS FUNCTION. Sun Cruiser's redesigned front and one-piece rear fiberglass cap and stainless steel wheel liners add a touch of class. Standard and available Ford and Workhorse chassis ranging from 20,500 to 22,000-lb. gross vehicle weight ratings let you tailor your coach to perfectly fit your driving and towing requirements. Choose the 22.5-inch tires available on the 35U, 37C and 38G for diesel pusher like look and ride performance.



2003 SUNCRUISER SPECIFICATIONS

	31Y	33V	35U	37C	38G
Length	31'8"	33'7"	35'8"	37'4"	38'2"
Exterior Height* - Ford®/Workhorse™	11'4"/11'7"	11'4"/11'7"	11'4"/11'5" □/11'8" ▣/11'9" Δ	11'4"/11'8" ▣/11'11" Δ	11'4"/11'8" ▣/11'11" Δ
Exterior Storage [∞] (cu. ft.)	8'5.5"	8'5.5"	8'5.5"	8'5.5"	8'5.5"
Interior Height	52.7	60.4	87.7	84.4\$	84.4
Interior Width	6'8"	6'8"	6'8"	6'8"	6'8"
Interior Width	8'	8'	8'	8'	8'
Fresh Water Capacity w/Heater (gal.)	90	90	90	90	90
Hold. Tank Capacity - Black/Gray (gal.)	45/41	52/45	40/54	53/55\$	53/55
LP Capacity (gal.)	28	28	28	28	28
Fuel Capacity - Ford & Workhorse (gal.)	75	75	75	75	75
GCWR - Ford/Workhorse (lbs.)	26,000/NA	26,000/26,000	26,000/26,000	26,000/26,000	26,000/26,000
GVWR - Ford/Workhorse (lbs.)	20,500/NA	20,500/20,700 □	20,500 [∞] /22,000 [∞] /20,700 □/22,000 [∞] /22,000 [∞] Δ	22,000/22,000 [∞] /22,000 [∞] Δ	22,000/22,000 [∞] /22,000 [∞] Δ
GAWR - Front, Ford/Workhorse (lbs.)	7,000/NA	7,000/7,500 □	7,000 [∞] /7,500 [∞] /7,500 [∞] □/8,000 [∞] /8,500 [∞] Δ	7,500 [∞] /8,000 [∞] ▣/8,500 [∞] Δ	7,500 [∞] /8,000 [∞] ▣/8,500 [∞] Δ
GAWR - Rear, Ford/Workhorse (lbs.)	13,500/NA	13,500/13,500 □	13,500 [∞] /14,500 [∞] ▣/13,500 [∞] □/14,500 [∞] ▣/15,000 [∞] Δ	14,500/14,500 [∞] ▣/15,000 [∞] Δ	14,500/14,500 [∞] ▣/15,000 [∞] Δ
Wheelbase	190"	208"	228"	248"	248"

□ = Ford Standard Chassis ∞ = Workhorse Chassis Option 1PN w/19.5" Tires Δ = Workhorse Chassis Option 1PS w/22.5" Tires

AUTOMOTIVE/CHASSIS

	31Y	33V	35U	37C	38G
Chassis - Ford® 6.8L Super-Duty V10 SOHC Triton™ engine, 310-hp, 4R100 electronic, 4-speed overdrive transmission, 130-amp. alternator, 4-wheel anti-lock brakes	S	S	S	S	S
Chassis - Workhorse® 8.1L Vortec V8, 340-hp, Allison® 1000 electronic 5-speed overdrive transmission, 145-amp. alternator, 4-wheel anti-lock brakes	0	0	0	0	0
Leaving Jacks hydraulic, manual touch pad w/chime, Tire Spare (NA w/Workhorse Chassis 1PS), Tire Tool wrench, Trailer Hitch 5,000-lbs. drawbar/350-lbs. maximum vertical tongue weight* & wiring, Wheel Liners stainless steel	S	S	S	S	S

CAB AREA & DRIVER CONVENIENCES

	31Y	33V	35U	37C	38G
Cab Seats (fabric) w/3-point adjustable seat belts, armrests, multi-adjustable swivel/slider/recline, Cab Sound Control Package , Cigarette Lighter/12-Volt Powerpoint , Compass electronic w/outdoor thermometer, Convenience Tray , Cruise Control , Door driver w/power window, assist bar.	S	S	S	S	S

CAB AREA & DRIVER CONVENIENCES (CONT.)

	31Y	33V	35U	37C	38G
KeyOne™ (common key w/entrance door & exterior storage compartments), Courtesy Light , Curtain front wraparound, pleated w/wands, Driver Door Trim Panel w/beverage holder, power mirror controls, Floor Mats carpet driver & passenger, Map Lights , Shades light filtering, cab windows, Shelf passenger side w/beverage holder, storage, powerpoint, Steering Wheel tilt w/power assist, Sunvisors (2) , Window (passenger) full-slider w/screen, dual-glazed/thermo-insulated, Windshield Wipers intermittent	S	S	S	S	S
Cab Seats UltraLeather HP™ seating surface w/manual lumbar support	0	0	0	0	0
Cab Seat Pedestal 6-way power assist (driver)	0	0	0	0	0
Cab Seat Pedestal 6-way power assist (driver & passenger)	0	0	0	0	0
Defroster Fans (2) auxiliary 2-speed w/instrument panel switch	0	0	0	0	0
Monitor System rearview w/single camera & 1-way audio, Sony® Workstation in dash	0	0	0	0	0

ENTERTAINMENT

	31Y	33V	35U	37C	38G
CB Prep antenna, antenna lead, 12-volt powerpoint, Entertainment Center (Exterior) w/Cassette* DC receptacle, AC duplex receptacle, AM/FM radio, exterior antenna jack, TV jack, radio antenna, speakers (2), lockable compartment, removable table, RV-RADIO™ (Cab) AM/FM stereo cassette/CD w/weather band, roof-mounted flexible rubber antenna, speakers (4), Radio Power Switch main/auxiliary battery, Satellite System Ready , Telephone input & interior jack(s), TV 19" Color AC w/remote, bedroom: TV 25" Color AC w/remote, TV Enhancement Package antenna (amplified), interior jacks, coax wiring, cable input, antenna check reminder light, Video Selection System	S	S	S	S	S
Compact Multi-disc Changer Sony®	0	0	0	0	0
DVD* (digital video disc) player	0	0	0	0	0
Entertainment Center (Exterior) w/CD Player*	0	0	0	0	0
Radios (4) two-way	0	0	0	0	0
Satellite Dish Antenna Winegard®, RV digital, elevation sensing unit	0	0	0	0	0
Sound System Deluxe w/DSurround™ TV 25" stereo color AC, stereo VCR, amplifier, speakers (5), sub-woofers (2)	0	0	0	0	0
VCR* w/remote	0	0	0	0	0

INTERIOR

	31Y	33V	35U	37C	38G
Ceiling fabric, Clock , Lights ceiling, incandescent, bath, bedroom w/wall switches, Light decorative oval, Lights fluorescent, recessed, galley, lounge w/wall switches, Lights reading, Mirror , Shades day/night pleated, Windows dual-glazed/thermo-insulated	S	S	S	S	S
Accessory Package rechargeable flashlight, rechargeable vacuum cleaner	0	0	0	0	0
Light wall lamp (lounge area)	S	S	S	S	S
Picture	S				

CABINetry

	31Y	33V	35U	37C	38G
Woodgrain Portsmouth Oak stile-and-rail construction w/arched raised panel inserts on upper doors	S	S	S	S	S
Woodgrain Concert Cherry stile-and-rail construction w/arched raised panel inserts on upper doors	0	0	0	0	0
Woodgrain Washed Maple stile-and-rail construction w/arched raised panel inserts on upper doors	0	0	0	0	0

FLOORCOVERING

Carpeting w/pad, Vinyl Tile bath, galley

31Y \$ S S S S

FURNITURE

Coffee Table, Lounge Chair* (Fabric) w/cabinet & table w/magazine rack, hoop-base, recliner, rocker, footrest, ReerEasy®

31Y \$ S S S S

Multi-Position Lounge (Fabric) w/throw pillows & fold-down beverage holder

33V \$ S S S

Bench Mark Full Comfort Dinettes access to storage below

33V \$ S S 0

Dining Table & Chairs* (2) free standing, (2) folding

33V 0 0 S S

Multi-Purpose Table & Chairs* (2) free standing, (2) folding

33V 0 0 0

Lounge Chair (UltraLeather HP™) hoop-base

33V 0 0 0 0

ReerEasy® Multi-Position Lounge (UltraLeather HP™)

31Y 0 0 0 0

GALLEY

CoffeeMaker, Countertops solid-surface, Faucet single-control, w/pull-out sprayer, Light fluorescent, under cabinet, Microwave,

386 \$ S S S S

Mirrors, Range three-burner w/large oven, glass door, recessed, sealed burners, Amana® Range Cover, Refrigerator/Freezer large double-door, Norcold® Roof Vent powered ventilator fan,

37C \$ S S S

Sink double-bowl molded w/sink covers (countertop material), Wastepaper Basket, Water Purification System w/separate faucet

35U \$ S S S

Countertop Flip-up Extension

33V \$ S S S

Microwave/Convection Oven Sharp®

33V 0 0 0 0

Pantry w/adjustable shelves (33V w/dual pantries)

33V \$ S S S

Range Top three-burner w/storage below, recessed, sealed burners, Amana®

33V 0 0 0 0

Refrigerator/Freezer large double-door w/ice-maker, Norcold®

33V 0 0 0 0

Refrigerator/Freezer* side-by-side w/ice-maker, Norcold®

33V 0 0 0

Utility Tray tip-out

33V S

Wall Border

31Y S

BATH

Cabinet lavatory, Cabinet medicine, Faucet (lavatory) dual-control, Faucet (shower) single-control w/fixed shower head, Hair Dryer wall-mounted w/night-light, Light shower, Lights makeup,

31Y \$ S S S S

Roof Vent power, Shower Door textured glass, Shower Skylight, Sink oval, Tissue Holder, Toilet (Porcelain) w/foot-pedal flush, Towel Rack 3-rod, mounted to door

33V \$ S

Chair Rail

33V \$ S

Cabinet linen

33V S

Magazine Rack

33V S S S

Mirror

33V S S

Robe Hook

33V S S S

Shower

33V S S S

Shower w/removable clothes rod

33V S

Shower/Tub

33V S

BATH (CONT.)

Shower Head hand held

31Y 0

Shower Package hand held shower head, fold-down bath shower seat

33V 0 0 0

Towel Bar

33V S S S S

Towel Ring

33V S S S S

BEDROOM

Alarm Clock, Bed queen, Serta® innerspring mattress, w/underbed storage, Bedspread, Pillows, Throw Pillow, Ceiling Molding, Headboard, Lights decorative wall lamps (2), Nightstands (2),

386 \$ S S S S

Powerpoint 12-volt DC receptacle(s), Vanity Cabinet w/fold-up countertop, folding chair, sliding mirrors over window (35U only),

37C \$ S S S S

Wardrobe Cabinet carpeted floor, clothes rod, cedar-lined, drawers (NA 35U), light, shelves (37C, 386)

35U \$ S S S S

Hamper tip-out

33V \$ S S S

Mirror backwall w/wood frame

31Y \$ S S S

EXTERIOR

Awning* patio, Awning Rails w/rain gutters, Door entrance w/separate screen door, deadbolt lock, Door fuel-fill, locking,

386 \$ S S S S

Entrance Door Steps electric w/doorjamb switch, Exterior Graphics Packages Jaguar Blue Metallic recommended w/ivorywood, Fern Garden or Crystal Lake, Or Light Silver Metallic recommended w/ivorywood, Fern Garden or Crystal Lake, Ladder, Lights fog lamps, Light porch light w/interior switch, Light driver-side service, Mirrors electric/remote w/defrost, Mudflaps rear,

37C \$ S S S

Receptacle AC duplex, Sidewall Skin one-piece smooth fiberglass, high-gloss, Storage Compartments smooth valance panels, trunk liner, gas struts, Tri/Mark® KeyOne™ System, paddle latch, lights

33V 0 0 0 0

Awning* patio, electric, w/wind sensor, remote

33V 0 0 0 0

Undercoating Workhorse™

31Y 0 0 0 0

SYSTEMS

Automotive Heater/Air Conditioner, Auxiliary Start Circuit, Batteries (Coach) (2) deep cycle, group 24, Battery (Coach) disconnect system, Battery Charge Control automatic dual, Drain 1" water tank, Electrical Distribution System AC & DC breaker panels, 45-amp, electronic converter/charger, Generator 5-500 watt, Onan® Marquis Gold™ gas, Generator/Shoreline Automatic Changeover

31Y \$ S S S S

Switch, ONEPLACE™ Systems Center wall-mounted, battery digital voltmeter, energy management display, generator hourmeter gauge, generator start/stop switch, holding tank levels, LP tank level, solar panel/battery charger light, water heater switch & lights, water pump switch & light, water tank level, Power Card 30-amp.,

33V \$ S S S

POWERLINE™ Energy Management System, Service Center (Drainage/Water) city water hookup/tank diverter fill, drainage valves, exterior wash station w/pump switch, 10' sewer hose, Service Center (Electrical) cable input, power cord, telephone input, Solar Panel 10 watt battery charger, Tank flushing system, black tank only, Tank holding, heated compartment, Tank LP, permanent mount w/gauge, TRUEAIR™ Central Air Conditioning System, Water Heater 10-gallon electronic ignition, 120 vac/LP gas w/Motoraid, Water Heater Winterization Bypass Valve manual, Wash Station exterior, Water Pump demand,

37C \$ S S S S

35U \$ S S S S

33V \$ S S S S

31Y \$ S S S S

SYSTEMS (CONT.)

Water System Winterizing Valve manual, Water Tank Fill gravity w/locking door, Water Tank Fill pressurized city hookup w/diverter valve

31Y \$ S S S S

Furnace 35,000 BTU, low profile

33V \$ S

Furnace 40,000 BTU, low profile

33V \$ S S

Generator 7,000 watt, Onan® Marquis Gold™ gas

33V 0 0 0 0

Home Comfort Plus Package central air heat pump, auxiliary automotive heater, insulated powered ventilator fans (bath & galley)

33V 0 0 0 0

Inverter* DC/AC, 300 watt

33V 0 0 0 0

Power Card 50-amp.

33V 0 0 0 0

Washer/Dryer Combination

33V 0 0

Washer/Dryer Prep

33V \$ S S

SLIDEOUT

Slideout Room (bed 31Y, 33V & bed/wardrobe 35U, 37C, 386)

386 \$ S S S S

Slideout Room (couch/dinette) w/slidoor cover, STOREMORE®

37C \$ S S S

Slideout Room (galley/couch) w/slidoor cover, STOREMORE®

33V \$ S S S

31Y \$

SAFETY

Assist Bar interior, Assist Handle exterior, acrylic w/logo, Bumpers front & rear, Detectors/Alarms LP leak, smoke, carbon monoxide, Fire Extinguisher 10 B.C., Ground Fault Interrupter, Light center high-mount brake lamp, Light courtesy w/wall switch, Lights daytime running lamps, Window escape, Windshield laminated safety glass

386 \$ S S S S

37C \$ S S S S

35U \$ S S S S

33V \$ S S S S

31Y \$ S S S S

WARRANTY

12-month/15,000-mile basic limited warranty,

386 \$ S S S S

36-month/36,000-mile warranty on structure,**

37C \$ S S S S

10-year limited parts & labor warranty on roof skin

35U \$ S S S S

33V \$ S S S S

31Y \$ S S S S

* The height of each model is based on the curb weight of a typically equipped unit on the standard chassis. The actual height of your vehicle may vary by as much as 2" depending on class or equipment variations.

^ Suncoaster floorplans feature a wide-body design — over 96". In making your purchase decision, you should be aware that some states restrict access on some or all state roads to 96" in body width. Before making your purchase decision, you should confirm the road usage laws in the states of interest to you.

* Not all items available in combination. See dealer for details.

◇ Capacities shown are tank manufacturer's listed water capacity (W.C.). Actual filled LP capacity is 80% of listing due to overfilling prevention device on tank.

∞ Your motor home's load capacity is designated by weight, not by volume, so you cannot necessarily use all available space when loading your motor home.

\$ Measurements are based on the most recent information available. See your dealer for updated specifications.

NA Not Available

S Standard

0 Optional

+ Actual towing capacity is dependent on your particular loading and towing circumstances which includes the GVWR, GAWR and GVWR as well as adequate trailer brakes. Please refer to your vehicle's operator's manual for further towing information.

** See your dealer for complete warranty documentation information.

Winnipeg Industries® continuing program of product improvement makes specifications, equipment, model availability and prices subject to change without notice. Comparisons to other motor homes are based on the most recent information available.

Not all motor homes are created equal. Take a closer look and you'll see there is much more to an Itasca Suncruiser than a long list of standard features and compelling floorplans. Beneath it all, you'll find a SuperStructure™ foundation of strength and durability.

SuperStructure is the term given to Winnebago Industries' structural motor home design and construction. Rather than a single component, it is the culmination of design integration that incorporates steel and aluminum substructures, composite-design laminated floor risers, interlocking joint technology and Thermo-Panel® floor, roof and sidewalls to form an incredibly strong, durable vehicle body.



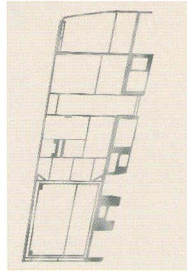
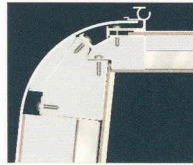
LAMINATED RISERS feature a welded aluminum core for superior strength and provide a stable base for the floor structure and storage compartments.

THE FOUNDATION SUBSTRUCTURE assembly is precision-aligned to maximize longitudinal and cross-coach support, as well as strength and durability.

CRITICAL STEEL COMPONENTS are treated using an advanced electro-deposition coating process that provides superior corrosion protection.



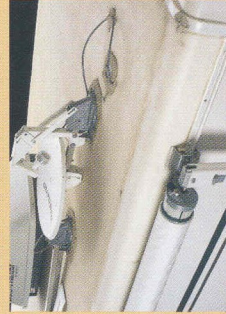
INTERLOCKING JOINT CONSTRUCTION utilizes advanced aluminum structural components to create integrated floor-to-sidewall and sidewall-to-roof joints. This design effectively distributes the weight of the walls and roof, making a stronger and more durable body than competitor designs which rely on screws to carry the weight.



WE INVENTED THERMO-PANEL SIDEWALL construction and over the year's have perfected this innovative composite construction process. It combines an exterior fiberglass panel, high-density block foam insulation and welded aluminum support structures to create some of the strongest, most durable and lightweight sidewalls in the industry.



1-YEAR OLD ITASCA FIBERGLASS ROOF



1-YEAR OLD COMPETITOR'S RUBBER ROOF

BUILT TO A HIGHER STANDARD. The Suncruiser features a crowned, one-piece fiberglass roof backed with a 10-year limited parts and labor roof skin warranty. Fiberglass offers superior strength, attractiveness and durability over the rubber roofs found on many competitive models which can chalk, streak and degrade over time. Fiberglass also provides increased puncture and tear resistance.

COMMITTED TO SERVICE. We back our motor homes with the best service after the sale in the industry.



- 12-month/15,000-mile basic limited warranty
- 36-month/36,000-mile warranty on structure
- Standard 10-year limited parts and labor roof skin warranty
- Complimentary 24-hour roadside assistance program
- TripSaver Fast Track Parts. TripSaver guarantees that in-stock warranty parts ship directly to your dealer within 24 hours.
- National dealer service network



RECOGNIZED QUALITY. Recreation Vehicle Dealer Association members annually rate RV manufacturers on the quality of their products, and sales and service support. Winnebago Industries has achieved the coveted Quality Circle award every year since its inception, the only major motor home manufacturer to do so.



ALL MOTOR HOMES ARE NOT CREATED EQUAL. Learn more about what sets Winnebago Industries apart. Ask your dealer for this guide. It will help you learn what makes Winnebago Industries motor homes distinctly superior to other brands.

WARNING: JOINING WIT HAS BEEN KNOWN TO CAUSE EXCESSIVE FUN. Winnebago-Itasca Travelers (WIT) is a club for owners of Winnebago Industries motor homes. WIT is a great way to meet people and offers you:



- Caravans and rallies
- Local and state group activities
- RV travel benefits

winnebagoind.com

For Sales and Service Information Contact:



©2002 Winnebago Industries, Inc.



Printed in USA

Seat belts are your most important hookup. Always buckle up.