

2014 Travel Star

TRAVEL TRAILERS AND EXPANDABLES BY STARCRAFT®

Travel Star

50 YEARS OF CAMPING | PURE AND SIMPLE



STARCRAFT

CAMPING | pure and simple.

The Gold Edition

- ◆ 2-YEAR LIMITED WARRANTY
- ◆ VACUUM-BONDED SIDEWALLS
- ◆ 7' INTERIOR CEILING HEIGHT
- ◆ OUTSIDE SHOWER (SELECT MODELS)





TRAVEL STAR TRAVEL TRAILER 294RESA | JEWEL



Travel Star
Simply Convenient.

Galaxy Black Pearl Edition

- 1 REMOTE CONTROL FOR AWNING, FRONT AND REAR JACKS, SECURITY LIGHTS, PORCH LIGHT AND SLIDEOUTS
- 2 22" BEDROOM TV WITH INSIDE/OUTSIDE BRACKET
- 3 SLAM LATCH PASS-THRU STORAGE DOORS
- 4 COLORED FIBERGLASS FRONT CAP
- 5 ALUMINUM RIMS WITH RADIAL TIRES AND WIDE-STANCE DESIGN

Yesterday's Lessons

At Starcraft, we're a family-owned business in the business of making camping fun. Over the last 50 years, we've created a solid reputation building dependable campers at affordable prices, using only the highest-quality materials. In that time, we've learned a thing or two about camping. We know why people like to camp, and what they like to do when camping. We put that knowledge into every camper we build.



Camping. Pure and Simple.





TRAVEL STAR TRAVEL TRAILER 285FB | SABLE

Sable décor choice - Available on all Travel Star models



1 SOFA 2 ACCENT FABRIC 3 CHAIR 4 BEDROOM ACCENT 5 DRAPERY 6 WOOD 7 CARPET



Travel Trailer

Simply More.

- 1 ENTERTAINMENT CENTER WITH 40" LED TV
- 2 ELECTRIC AWNING WITH LED LIGHTING STRIP (50TH ANNIVERSARY PACKAGE)
- 3 XTEND-A-BED, FEATURES 60" x 80" FULL-SIZED QUEEN BED (50TH ANNIVERSARY PACKAGE)
- 4 DOUBLE SINKS IN BATHROOM (285FB)
- 5 60" SHOWER WITH DUAL SHOWER HEADS AND SKYLIGHT (285FB)



Standards and Options

STANDARD CONSTRUCTION EQUIPMENT

3/8" decking on roof
5/8" tongue-and-groove plywood floor
4-1/2" arched truss roof rafters (R-22 insulation)
6" interior slideout height
7" interior ceiling height
Arctic Package: Insulated, heated and enclosed underbelly, foil insulation in roof and slideout floors
Screwed-stile hardwood cabinetry
I-Class cambered structural-steel I-beam frame
In-floor ducted heat
One-piece seamless rubber roof material
R-7 insulation in floor and sidewalls
TuffShell vacuum-bonded laminated sidewalls

STANDARD EXTERIOR EQUIPMENT

6-gal. gas/electric DSI water heater
30-lb. propane bottles with cover (2)
30" x 72" radius-cornered main entrance door with screen door
120V G.F.C.I. protected exterior receptacle
Bumper with drain hose carrier and end caps
Cable and satellite TV prep
Crank-up HDTV antenna with signal booster
E-Z Lube axles
Fiberglass front cap
Front diamond plate
Large grab handle at entry door
Nev-R-Adjust electric brakes
Outside refrigerator (select models)
Outside kitchen with bumper mount grill, refrigerator and sink (309BHS)
Outside TV prep
Patio awning
Propane bottle cover made of molded ABS
Radial tires
Stabilizer jacks (4)
Starmaxx pass-through storage with tool hooks and courtesy light
Step light at entry door
Tinted safety-glass windows
Water system winterization kit

STANDARD INTERIOR EQUIPMENT

A/C Chillgrille
Auto-ignition furnace with wall thermostat with full-drawer extension
Bourbon Glaze beech wood doors and drawers throughout
Command Center with centrally located switches
Decorative lighting package
Evergreen mattress with radius corners
Marine-grade table leg and pedestal base
Multi-Media Sound System AM/FM/CD stereo with MP3 input jack
Overhead cabinetry in slideout above sofa
Pleated shades
Porcelain toilet with foot flush
Quilted bunk mats
Radius shower (select models)
Sliding pocket doors in front bedroom (select models)
Roof-mounted antenna for radio
Shaw Carpet-with R2X stain and soil resistance
Sleeper sofa
Storable laundry basket under bed
Window treatments with wood trim around windows

STANDARD KITCHEN EQUIPMENT

Deep-storage drawers under booth dinette seat (2)
Double drawer with integrated silverware dividers
Extra large picture window at dinette
Flush-mount refrigerator with black panel inserts

Integrated trash can storage (select models)
Kitchen backsplash
Pots and pans drawer, below oven (select models)
Range hood with light and exhaust fan
Residential-style faucet with pull-out sprayer
Sink covers with integrated drying rack
Spice rack storage integrated into valance
Storable cutting board

CUSTOMER CONVENIENCE PACKAGE

3-burner range with 9,000-BTU SuperBurner and piezo igniter
13,500 or 15,000-BTU A/C
Black tank flush
Microwave
Outside shower
Outside speakers (2)
Oversized 21" oven
Roof ladder
Security lights (2)
Spare tire with carrier
Tub surround
Water heater bypass system

OPTIONS

22" LED TV in bedroom with inside/outside bracket
50-amp service with 2nd A/C prep (select models)
Aluminum rims
Bumper-mount grill
Frameless thermal-pane windows
Free-standing table with hidden leaf and four chairs (285FB and 286RLWS)
Free-standing table with hidden leaf and four chairs in lieu of folding table with two Euro chairs (294RESA)
Front and rear electric stabilizer jacks
Hide-a-bed sofa (select models)
Recliner chairs (2) in lieu of swivel rocker (286RLWS)
Thermal-pane windows

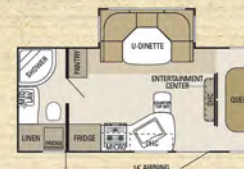
GALAXY BLACK PEARL EDITION

6-panel residential trim bathroom door
Aluminum rims
Bedroom carpet
Equa-Flex axle equalizer
Frameless windows
Front and rear electric stabilizer jacks
Hardwood refrigerator door inserts
Headboard with integrated shelf and 22" LED TV in bedroom
Large folding grab handle
Keyless main entrance door
Painted black front cap with rock-guard protection
Remote control for awning, front and rear jacks, security lights, porch light and slideouts
Raised-panel cabinetry in living room and kitchen
Skylight with LED lighting in living room and kitchen
Slam-latch, pass-thru storage doors
Solid-surface kitchen countertops with undermounted sink and covers
Upgraded graphics
Wallpaper border in living room

50TH ANNIVERSARY PACKAGE (MANDATORY)

8 cu. ft. refrigerator
CD/DVD with MP3 and iPod input jack
Electric awning with LED lighting
Electric tongue jack
Xtend-a-bed (60" x 80" queen bed)
12-volt dual USB outlet
50th anniversary tire cover

Floorplans



Travel Star TT 244DS

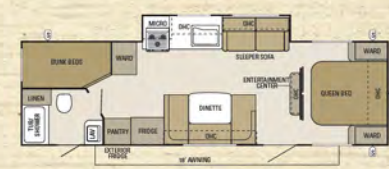


Travel Star TT 274RKS

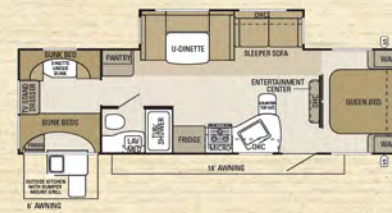
Travel Star TT 285FB OPTIONS: A, B



Travel Star TT 286RLWS OPTIONS: A, B



Travel Star TT 294RESA OPTIONS: A, C



Travel Star TT 299BHU

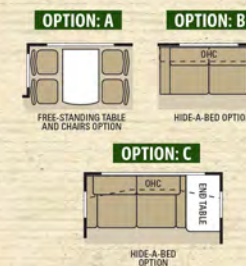
Travel Star TT 309BHS OPTION: B

Specifications

Floorplan	Exterior Length	Exterior Height	Interior Height	Unloaded Vehicle Weight (lbs.)	Dry Hitch Weight (lbs.)	Cargo Carrying Capacity (lbs.)	Fresh Water Capacity (gal) (includes water heater)	Gray Waste Water Capacity (gal)	Black Waste Water Capacity (gal)
244DS	TBD	TBD	84"	TBD	TBD	TBD	68.6	30.8	30.8
274RKS	30' 1"	137"	84"	5,870	760	1,630	68.6	61.6	30.8
285FB	32' 1"	139"	84"	6,440	845	1,810	72.6	62.8	30.8
286RLWS	33' 3"	137"	84"	6,740	940	2,260	72.6	30.8	30.8
294RESA	34'	137"	84"	7,420	1,000	1,830	68.6	30.8	30.8
299BHU	32' 7"	138"	84"	6,175	760	1,775	68.6	30.8	30.8
309BHS	34' 1"	138"	84"	6,905	850	1,895	68.6	30.8	30.8

UNLOADED VEHICLE WEIGHT (UVW): Sometimes referred to as "Dry Weight," UVW means the typical weight of this trailer as built at the factory. The UVW, as used in product literature and other promotional materials, does not include cargo, fresh water, propane, options or dealer-installed accessories. The weights of certain options and/or option packages are not included in the UVW listed above. **GROSS VEHICLE WEIGHT RATING (GVWR):** GVWR means the maximum permissible weight of the trailer, including the UVW plus passengers, personal items, all cargo, fluids, options, and dealer-installed accessories. The GVWR is equal to or greater than the sum of the UVW and the CCC. **CARGO CARRYING CAPACITY (CCC):** CCC means the maximum weight of all passengers, personal items, food, fresh water, propane, tools, other cargo and dealer-installed accessories that can be carried by the trailer. CCC is equal to or less than GVWR minus UVW. The addition of options will decrease the CCC. **HITCH WEIGHT (HW):** The hitch weight, as used in product literature

and other promotional materials, does not include cargo, fresh water, propane gas, options or dealer-installed accessories. The addition of these types of items will either add to or subtract from the stated hitch weight. It is important for your safety and enjoyment that your tow vehicle be adequately sized and equipped to tow and handle the GVWR of the RV you select. Review weights and rating of your tow vehicle and consult a competent advisor for questions or advice. Whether you are new to RVing or a veteran, get a feel for the performance of your tow vehicle and the RV together before heading out on the roadways. When you tow an RV, you must drive differently than you do when driving a single vehicle. Practice hooking up, driving, backing up and braking in a safe environment or seek out professional instruction. Starcraft affixes a weight label to each RV which lists weight information for that vehicle. See specification chart above.



SCAN for a complete list of standards and options, OR VISIT starcraftcamping.com



Marble décor choice - Available on all Travel Star models



1 SOFA 2 ACCENT FABRIC 3 CHAIR 4 BEDROOM ACCENT 5 DRAPERY 6 WOOD 7 CARPET

TRAVEL STAR EXP 229TB | MARBLE



Expandable
Simply Roomy.

- 1 AQUASHIELD AQUALON TENTS WITH 7-YEAR WARRANTY
- 2 CONVENIENT OUTDOOR REFRIGERATOR (227CKS)
- 3 AMISH-CRAFTED CABINETY WITH SCREWED-STILE CONSTRUCTION
- 4 HIGH-RISE MIXING FAUCET WITH PULL-OUT SPRAYER (SELECT MODELS)
- 5 OUTDOOR BUMPER-MOUNT GRILL (OPTIONAL)
- 6 LARGE U-DINETTE WITH DEEP-STORAGE DRAWERS
- 7 QUILTED BUNK MATS WITH 1,100-LB. RATED BUNKS

2



3



4



5



6



Standards and Options

STANDARD CONSTRUCTION EQUIPMENT

78" ceiling height
Cable support bunk end system (1,100-lb. capacity)
Corrosion-resistant frame
Crowned truss roof
One-piece seamless rubber roof material
Screwed-stile hardwood cabinetry
TuffShell vacuum-bonded sidewalls
Welded tubular-aluminum sidewalls

STANDARD EXTERIOR EQUIPMENT

2-5/16" hitch coupler
6-gal. gas DSI water heater
12V demand water pump
20-lb. propane bottles with auto changeover (2)
120V G.F.C.I. protected exterior receptacle
Aerodynamic front profile
Amber patio light with inside switch
AquaShield Aqualon water-repellent sectionalized tent with 7-year warranty
Bumper with drain hose carrier and end caps
Bunk-end tents permanently attached to bed base
Crank-up HDTV antenna with signal booster
E-Z Lube axles
Fresh water fill and hookup connection
Front diamond plate
Lighted entrance step
Molded rain guttering with extended drip spouts
Outside refrigerator (227CKS)
Outside grill prep
Painted bottom radius skirting
Patio awning
Radial tires
Self-supporting lockable bunk ends (no poles required)

STANDARD INTERIOR EQUIPMENT

18,000-BTU furnace with auto-ignition
Ball bearing drawer guides, 50-lb. capacity with full-drawer extension
Bathroom exhaust fan
Bourbon Glaze beech wood doors and drawers throughout
Cable and satellite TV prepped
High-density foam cushions
LED light in bunk area
Pleated shades
Porcelain toilet with foot flush
Privacy curtains for bunks
Queen bed-sized quilted bunk mats (2)
Stereo with MP3 input jack and 2 speakers
Systems monitor panel
Tub/shower skylight
Vanity mirror in bathroom
Water heater bypass system
Winterization kit

STANDARD KITCHEN EQUIPMENT

3-burner range
13,500-BTU A/C with wall thermostat
ABS gas bottle cover with access hatch to propane valves
ABS tub surround
Flush-mounted refrigerator
High-rise mixing faucet with pull-out sprayer (select models)
Large kitchen window (select models)
Oversized kitchen sink with integrated drying racks (select models)
Range hood with light and exhaust fan
Spare tire with carrier and cover

CUSTOMER CONVENIENCE PACKAGE

13,500 BTU A/C
ABS propane bottle cover
Marine-grade exterior speakers (2)
Microwave with carousel
Spare tire with carrier
Stabilizer jacks (4)
Tub surround
Water heater bypass system

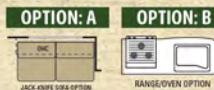
OPTIONS

22" LED TV and CD/DVD Player with MP3 iPod input jack
Aluminum rims
Bumper-mount grill
Jack-knife sofa (select models)
Oven

50TH ANNIVERSARY PROMOTIONAL PACKAGE

50th Anniversary spare tire cover
Electric awning with LED lighting
8 cu. ft. refrigerator

7

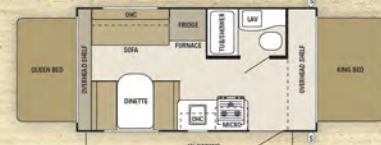


OUTSIDE STORAGE
TRAILER HITCH
LAV BATHROOM SINK
MICRO MICROWAVE
OHC OVERHEAD CABINETS
FRIDGE REFRIGERATOR
WARD WARDROBE

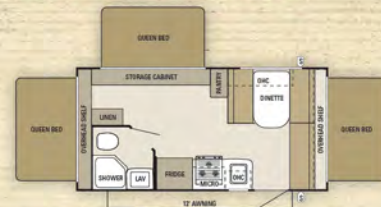


SCAN for a complete list of standards and options,
OR VISIT starcraftcamping.com

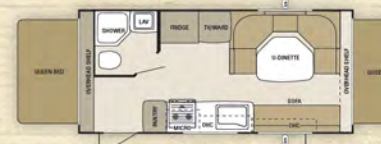
Floorplans



Travel Star EXP 186RD **OPTION: A**



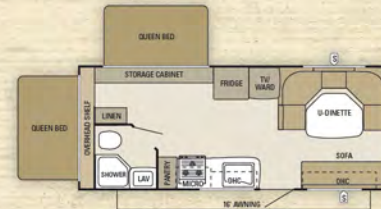
Travel Star EXP 187TB



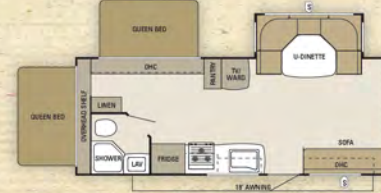
Travel Star EXP 207RB **OPTION: A**



Travel Star EXP 227CKS



Travel Star EXP 229TB **OPTION: A**



Travel Star EXP 239TBS **OPTIONS: A, B**

Specifications

Floorplan	Exterior Length	Exterior Height with A/C	Interior Height	Unloaded Vehicle Weight (lbs.)	Dry Hitch Weight (lbs.)	Cargo Carrying Capacity (lbs.)	Fresh Water Capacity (gal) (includes water heater)	Gray Waste Water Capacity (gal.)	Black Waste Water Capacity (gal.)
186RD	20' 7"	122"	78"	3,355	443	1,120	28.5	30.8	30.8
187TB	21' 7"	122"	78"	3,650	415	825	28.5	30.8	30.8
207RB	22' 9"	122"	78"	3,750	420	1,200	28.5	30.8	30.8
227CKS	25' 8"	128"	78"	4,660	480	1,315	28.5	30.8	30.8
229TB	25' 10"	122"	78"	4,120	400	1,330	28.5	30.8	30.8
239TBS	TBD	TBD	78"	TBD	TBD	TBD	28.5	30.8	30.8

UNLOADED VEHICLE WEIGHT (UUV): Sometimes referred to as "Dry Weight," UUV means the typical weight of this trailer as built at the factory. The UUV, used in product literature and other promotional materials, does not include cargo, fresh water, propane, options or dealer-installed accessories. The weights of certain options and/or option packages are not included in the UUV listed above. **GROSS VEHICLE WEIGHT RATING (GVWR):** GVWR means the maximum permissible weight of the trailer, including the UUV plus passengers, personal items, all cargo, fluids, options and dealer-installed accessories. The GVWR is equal to or greater than the sum of the UUV and the CCC. **CARGO CARRYING CAPACITY (CCC):** CCC means the maximum weight of all passengers, personal items, food, fresh water, propane, tools, other cargo and dealer-installed accessories that can be carried by the trailer. CCC is equal to or less than GVWR minus UUV. The addition of options will decrease the CCC. **HITCH WEIGHT (HW):** The hitch

weight, as used in product literature and other promotional materials, does not include cargo, fresh water, propane gas, options or dealer-installed accessories. The addition of these types of items will either add to or subtract from the stated hitch weight. It is important for your safety and enjoyment that your tow vehicle be adequately sized and equipped to tow and handle the GVWR of the RV you select. Review weights and rating of your tow vehicle and consult a competent advisor for questions or advice. Whether you are new to RVing or a veteran, get a feel for the performance of your tow vehicle and the RV together before heading out on the roadways. When you tow an RV, you must drive differently than you do when driving a single vehicle. Practice hooking up, driving, backing up and braking in a safe environment or seek out professional instruction. Starcraft affixes a weight label to each RV which lists weight information for that vehicle. See specification chart above.

CELEBRATING

50 Years of Innovation



Starcraft is one of the most dependable names in the camping industry, thanks to 50 years of unwavering innovation.

Our family-owned company remains devoted to building quality campers purely built for camping — all at an affordable price.

With a versatile lineup, Starcraft delivers everything you need to have a great time in the great outdoors.



EXTENDED CAMPING

Our standard Arctic Package extends your camping season, providing protection against cooler temperatures with its insulated, heated and enclosed underbelly.



DURABLE CONSTRUCTION

Using TuffShell vacuum-bonded lamination, our walls combine welded aluminum framing, fiberglass sidewalls and metal backers, ensuring your camper can handle the toughest conditions. Also, residential-style ball bearing drawer guides give our drawers full extension, smooth operation and more strength.



eco advantage

The Starcraft EcoAdvantage is our company's commitment to protecting the environment. Scan this QR code with your smartphone to watch a video about our efforts and the impact we're making on our planet.



For a copy of the industry-leading limited warranty with full terms and conditions, ask your local Starcraft dealer.



Roadside Assistance

Travel worry-free with the complimentary 1-Year Roadside Assistance program, which gives you immediate access to dependable roadside assistance with a simple phone call (available at participating dealers).



The Value of Your Local Starcraft Dealer

Establishing a solid relationship with your local Starcraft dealer is a key component in the enjoyment of your new Starcraft. By purchasing from a local dealer, you will have a convenient location for sales, parts and service support.

FOLLOW US ON



© Starcraft RV • 536 Michigan St., Topeka, IN 46571

www.starcraftcamping.com
See dealer for further information and prices. All information in this brochure is the latest available at the time of publication approval. Starcraft reserves the right to make changes and to discontinue models without notice or obligation. Photos in this brochure may show optional equipment and props for photography purposes. RV's built for sale in Canada may differ to conform to Canadian codes.

www.starcraftcamping.com

VISIT OUR WEBSITE FOR MORE INFORMATION OR TO FIND A DEALER NEAR YOU.