

**Dutch Star**  
2007 || DIESEL MOTORHOME



**Dutch Star**

2007 || DIESEL MOTORHOME





**YOUR DUTCH STAR KITCHEN**

Built-in appliances, generous cabinets and plenty of countertop space help make meal preparation a breeze. Clean-ups are easy, too, thanks to a new routed countertop backsplash of polished Corian®.

## COULD A STAR HOLD YOUR DESTINY? THIS ONE COULD.

---

Wherever it is you've dreamed of taking your RV, Dutch Star will get you there—with more power, performance and personality than any other motorhome in its class. Our designers and engineers have seen to that. They've given Dutch Star generous, wide-open interiors, a wealth of sophisticated standards and upscale options, a high-horsepower engine and all the usual traits that make this a genuine Newmar. Like solid dependability. Elegant styling. And uncompromising value. Now, that'll take you...

ANYWHERE YOU'RE DESTINED TO GO.





**COCKPIT SAFETY AND COMFORT**

The leather/vinyl front seats offer six-way power and lumbar support as well as three-point, height-adjustable seat belts for added comfort and safety.

**NORCOLD® FOUR-DOOR REFRIGERATOR**

With its integrated icemaker and water dispenser, this Dutch Star option brings true homestyle functionality to your kitchen.



**STYLISH LIVING**

Inside and out, Dutch Star dazzles. The new exterior graphics, for instance, lend both drama and class. In the kitchen, optional Light Maple Glazed Hardwood Cabinetry adds an extra touch of distinction. An optional ceramic tile floor with an area rug and a standard hidden-leaf dinette table are further appointments you'll appreciate.





#### EASY-GLIDING DRAWERS

Residential-style full-extension ball-bearing guides let you open and close any drawer with exceptional ease. Added convenience is provided by a standard, molded silverware divider tray.

---

#### PULLOUT FAUCET

The kitchen sink's single-lever faucet has a pullout spout for easier use. The sink itself is undermounted and comes with flush-fitting solid-surface covers to match the polished Corian® countertop and backsplash.







#### BATHROOM AMENITIES

Easy-cleaning, polished Corian® countertops, ample cabinet space and a decorative glass shower door are but a few of the Dutch Star bathroom's thoughtful conveniences.



#### FURTHER BEDROOM AMENITIES

Dutch Star bedrooms feature redesigned cabinetry to accommodate a second satellite receiver and the optional washer/dryer combo.



#### RESTFUL COMFORT

The luxurious pillowtop mattress, quilted bedspread with shams and accent pillows make the Dutch Star bedroom an inviting place for relaxation and renewal. Recessed storage in the closet allows you to maximize your space.



#### DUTCH STAR DASH

Our dash configuration puts all Dutch Star navigation tools well within view and reach. A color rearview monitor system, one-piece windshield and VIP SMART Wheel are standard features.



#### MISSION CONTROL

The Dutch Star cockpit has everything you need to take command of the road. Its leather/vinyl driver and passenger seats feature six-way power adjustment, lumbar support and swivel capability. Above the cockpit is a new Sony® home theater system with a single-disc DVD player and a surround-sound receiver.





#### EXTERIOR BATTERIES

Your Dutch Star gives you four 6-volt batteries mounted on an easily accessible pullout tray and housed in their own exterior compartment featuring a side-hinged swing-out door.



#### EXTERIOR POWER CONNECTION

With this exterior power connection and optional cord rewind reel, you have convenient access to electrical power outside the Dutch Star.



#### OPTIONAL SIDEVIEW CAMERAS

While underway, Dutch Star's optional sideview cameras let you safely view from the cab the area immediately surrounding either side of the coach.

#### NEW EXTERIOR GRAPHICS

This year's more richly detailed Full-Paint Masterpiece Finish™ exterior graphics give the Dutch Star an even sleeker, bolder look.



**CEILING: R-VALUE = 16**

- a. BriteTEK™ Roof
- b. 9 mm Wood Decking
- c. Fiberglass Batten Insulation
- d. A/C Ducting
- e. Aluminum Roof Truss
- f. Kraft Paper Vapor Barrier
- g. 5/8" Bead Foam
- h. 3/16" Panel
- i. Padded Vinyl Overlay

**WALLS: R-VALUE = 11**

- j. 3/16" Plywood Interior Wall
- k. 5/8" Bead Foam
- l. Kraft Paper Vapor Barrier
- m. Fiberglass Batten Insulation
- n. 3/16" Plywood Exterior Wall
- o. Composite One-piece Gelcoat Exterior Sidewall
- p. 16" On-center Aluminum Framing with 3 1/2" Header

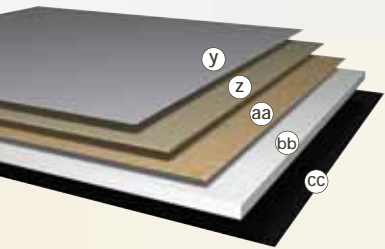
**BASEMENT: R-VALUE = 4**

- y. Cargo Liner
- z. 3/8" Floor Decking
- aa. 3/16" Luan Panel
- bb. 1 1/2" Bead Foam
- cc. Aluminum Sheeting (Prevents Distortion)

**FLOORING: R-VALUE = 16**

- q. Carpet/Tile
- r. Carpet Padding
- s. 3/8" Floor Decking
- t. Fiberglass Batten Insulation
- u. 2" x 3" Wood Framing
- v. Polyethylene Moisture Barrier
- w. Foam Panels (Noise Reduction)
- x. Aluminum Ducting

- 1. 13.5M or 15M Penguin™ Heat Pump Central Air Conditioners (2)
- 2. One-piece Windshield
- 3. Coated Aluminum Wheels
- 4. Double-pane Tinted Safety-glass Windows
- 5. Side-hinged Baggage Doors with Pullout Tray



**NEWMAR TOTAL COMFORT™ CENTRAL AIR CONDITIONING**

Experience RV air conditioning just like that found in site-built homes. Newmar's Total Comfort Central Air Conditioning is actually two separate, fully ducted systems: one to distribute incoming cool air, the other to quickly and effectively remove warm air from every living area.

**PROTECTED C-CHANNELS**

To keep the electrical wiring that runs through holes in the aluminum-frame C-channels from chafing, each hole is ringed with a rubber grommet.

**SIKAFLEX®**

Used throughout Newmar construction, Sikaflex® elastic adhesive is one of the strongest bonding agents on the market today. It also serves as a sealant against air and water. And it helps dampen both sound and vibration.

**16" ON-CENTER FRAMING**

Just like a fine site-built residential home, your Newmar home is framed 16 inches on center, which allows the best placement of outlets, switches and other components.





BISCOTTI



CIDER



SABLE



SEA GLASS



a.



b.



c.



d.



e.



f.



g.



h.

WOOD FINISHES & INTERIORS

- a. Mesa Oak Hardwood Cabinetry, Standard
- b. Coastal Cherry Hardwood Cabinetry
- c. Light Maple Glazed Hardwood Cabinetry
- d. Velvet Cherry Hardwood Cabinetry
- e. Biscotti Color Scheme with flooring options (top to bottom): simulated plank (standard, matches cabinetry), ceramic and marble
- f. Cider Color Scheme with flooring options (top to bottom): simulated plank (standard, matches cabinetry), ceramic and marble
- g. Sable Color Scheme with flooring options (top to bottom): simulated plank (standard, matches cabinetry), ceramic and marble
- h. Sea Glass Color Scheme with flooring options (top to bottom): simulated plank (standard, matches cabinetry), ceramic and marble

Some features shown in our literature are optional. Colors and finishes are photographic representations. The actual materials may look different. Prices, specifications and floorplans are subject to change at Newmar's discretion, without prior notice or obligation. Please see your dealer for actual samples and specifications.

FULL-PAINT MASTERPIECE FINISH™

Newmar's Full-Paint Masterpiece Finish raises the exterior beauty and durability of our motorhomes to a whole new level. This model year, we're offering our richest-looking graphics ever—to lend even more character and class. As industry leaders in applying full body paint to motorhome coaches, we at Newmar are pleased to offer the Full-Paint Masterpiece Finish as a Dutch Star Diesel Motorhome standard.

DETAILS, DETAILS, DETAILS. Go ahead. Get close. Real close. You'll see that this motorhome's comfort and styling aren't superficial: They're built into the very weave of our fabrics, the very grain of our cabinets and every nook and cranny you might want to scrutinize. After all, it's details that make the Newmar difference.

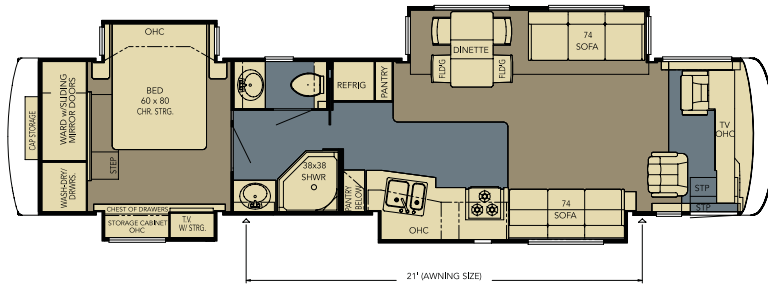
Carpet

Simulated Plank Flooring

### DSDP 4023

Length: 40' 8"  
Width: 101.5"

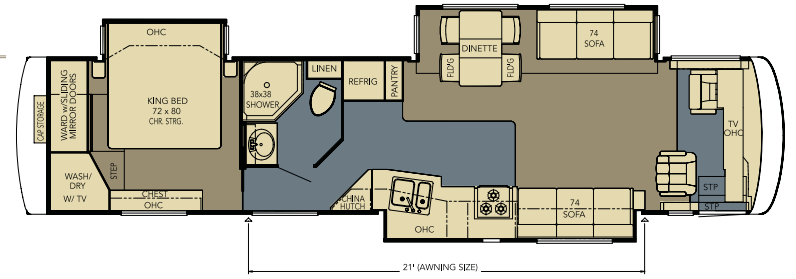
- Options:
- K124
  - K421\_2
  - K541\_2
  - K911
  - P370\_2



### DSDP 4036

Length: 40' 8"  
Width: 101.5"

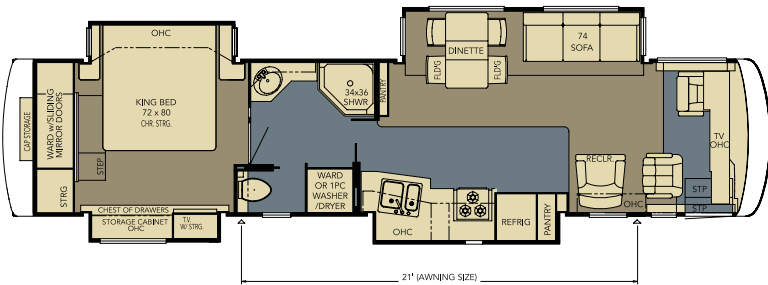
- Options:
- K030
  - K124
  - K421\_2
  - K541\_2
  - K911
  - P370\_12



### DSDP 4024

Length: 40' 8"  
Width: 101.5"

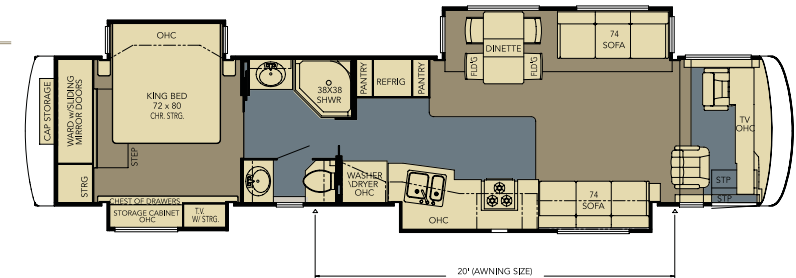
- Options:
- K030\_3
  - K124
  - K240
  - K421\_2
  - K541\_2
  - R104



### DSDP 4304

Length: 42' 8"  
Width: 101.5"

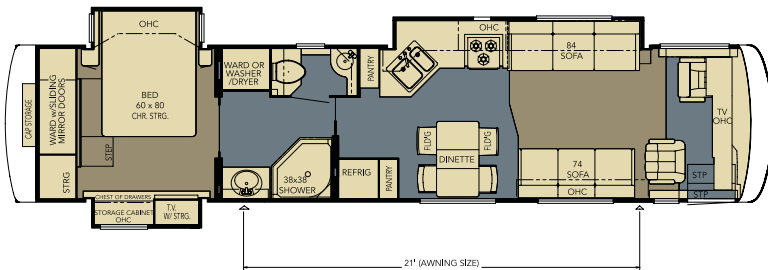
- Options:
- K030
  - K124
  - K421\_2
  - K541\_2
  - K911
  - P370\_6



### DSDP 4029

Length: 40' 8"  
Width: 101.5"

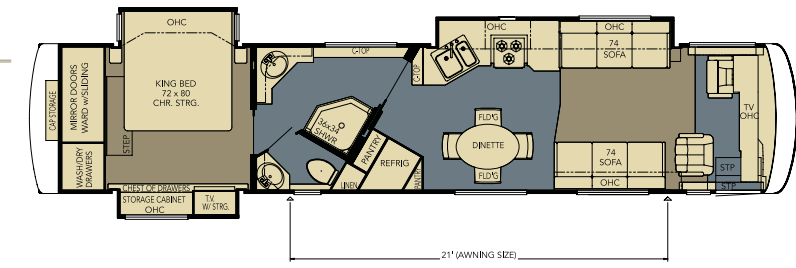
- Options:
- K124\_2
  - K421\_3
  - K541
  - K910
  - N450\_5
  - P370\_10



### DSDP 4306

Length: 42' 8"  
Width: 101.5"

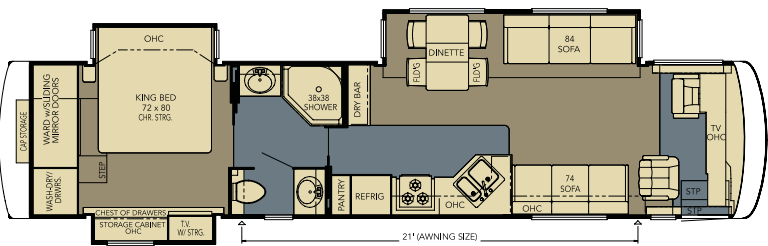
- Options:
- K030
  - K124\_2
  - K421\_3
  - K910
  - N450\_5



### DSDP 4035

Length: 40' 8"  
Width: 101.5"

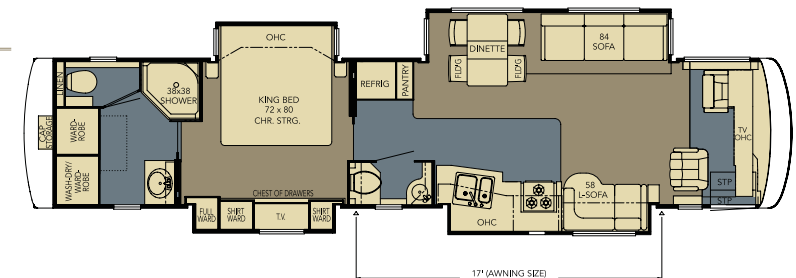
- Options:
- K030
  - K124
  - K421\_2
  - K541\_2
  - K801
  - K910
  - N450\_6
  - P370\_11



### DSDP 4307

Length: 42' 8"  
Width: 101.5"

- Options:
- J580
  - K030\_4
  - K124
  - K421\_2
  - K541\_2
  - K801
  - P370\_7

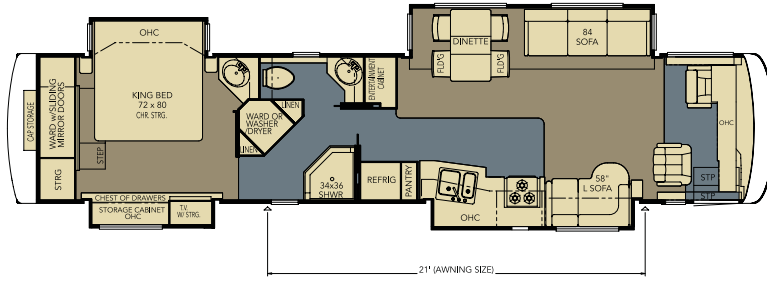




## DSDP 4320

Length: 42' 8"  
Width: 101.5"

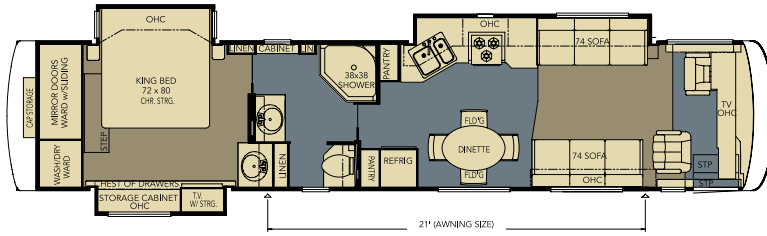
- Options:  
 • J374  
 • J580  
 • K030  
 • K124  
 • K421\_2  
 • K541\_2  
 • K801



## DSDP 4321

Length: 42' 8"  
Width: 101.5"

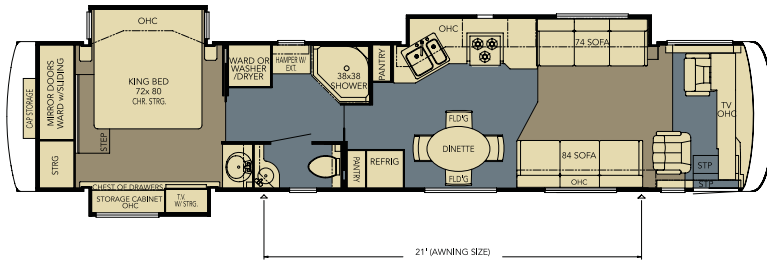
- Options:  
 • K030  
 • K124\_2  
 • K421\_3  
 • K910  
 • N450\_5  
 • P370\_8



## DSDP 4323

Length: 42' 8"  
Width: 101.5"

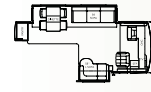
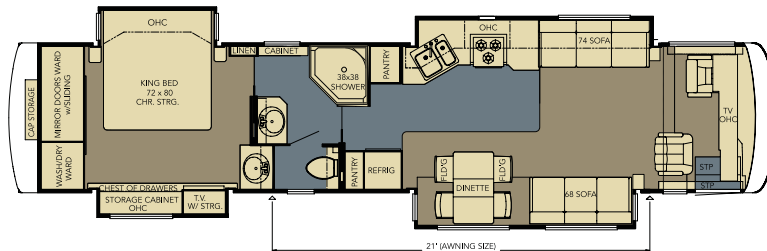
- Options:  
 • K030  
 • K124\_2  
 • K421\_3  
 • N450\_5  
 • P370\_9



## DSDP 4324

Length: 42' 8"  
Width: 101.5"

- Options:  
 • K030  
 • K124\_5  
 • K421  
 • K541\_6  
 • P370\_8



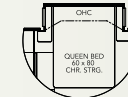
### J374

26" LCD TV Option  
in Front of OHC  
4320



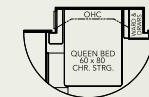
### J580

59" Entertainment  
Center  
4307, 4320



### K030

Queen Bed (ILO King)  
4035, 4036, 4304, 4306,  
4320, 4321, 4323, 4324



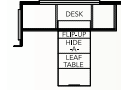
### K030-3

Queen Bed  
with Wardrobe (ILO King)  
4024



### K030-4

Queen Bed (ILO King)  
4307



### K124

Combination  
Desk Dinette  
4023, 4024, 4035, 4036,  
4304, 4307, 4320



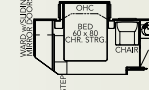
### K124-2

Combination  
Desk Dinette  
4029, 4306, 4321, 4323



### K124-5

Combination  
Desk Dinette  
4324



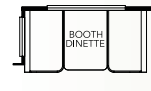
### K240

Queen Bed with Chair  
4024



### K421

Booth Dinette  
4324



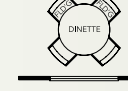
### K421-2

Booth Dinette  
4023, 4024, 4035, 4036,  
4304, 4307, 4320



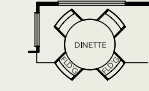
### K421-3

Booth Dinette  
4029, 4306, 4321, 4323



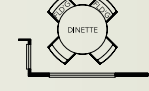
### K541

Round Dinette  
4029



### K541-2

Round Dinette  
4023, 4024, 4035, 4036,  
4304, 4307, 4320



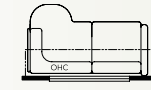
### K541-6

Round Dinette  
4324



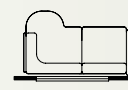
### K801

Combination U-dinette  
and L-lounge  
4035, 4307, 4320



### K910

72" L-lounge  
4029, 4035, 4306, 4321



### K911

72" L-lounge  
4023, 4036, 4304



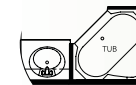
### N450-5

Center Entry  
4029, 4306, 4321, 4323



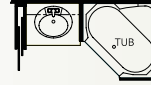
### N450-6

Center Entry  
4035



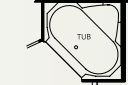
### P370-2

Bathtub (ILO Shower)  
4023



### P370-6

Bathtub (ILO Shower)  
4304



### P370-7

Bathtub (ILO Shower)  
4307



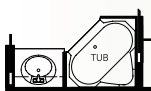
### P370-8

Bathtub (ILO Shower)  
4321, 4324



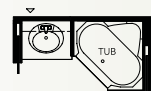
### P370-9

Bathtub (ILO Shower)  
4323



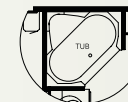
### P370-10

Bathtub (ILO Shower)  
4029



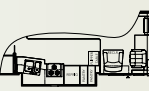
### P370-11

Bathtub (ILO Shower)  
4035



### P370-12

Bathtub (ILO Shower)  
4036



### R104

Power Lock Arms  
4024

## STANDARD FEATURES

### CHASSIS FEATURES

- Spartan® Mountain Master GT Chassis with IFS
- Cummins® ISL 400 hp
- Two-stage Engine Compression Brake
- Adjustable Pedals
- Tag Axle on 43' Floorplans
- Coated Aluminum Wheels
- Hydraulic Levelling Jacks
- Cruise Control
- Tilt-and-Telescope Steering with VIP SMART Wheel
- Recessed Fuel Fills with Crossover to Fill from Either Side
- Anti-lock Braking System
- Electronic Chassis Information Display in Dash

### AIR CONDITIONING & HEATING

- Two 13.5M Penguin™ Heat Pump Central Air Conditioners (40' Floorplans)
- Two 15M Penguin™ Heat Pump Central Air Conditioners (43' Floorplans)
- Propane Furnace with In-floor Ducted Heat
- Dash Heater and High-output Air Conditioner
- Propane Leak Detector

### APPLIANCES & ACCESSORIES

- 30" Convection Microwave Oven
- Three-burner Cooktop with Piezo Ignition
- Polished Corian® Range Cover
- Dometic® 10 cu. ft. Refrigerator with Icemaker
- Hardwood Raised-panel Refrigerator Front
- 10 gal. XT16 Gas/Electric Water Heater with Direct-spark Ignition
- Washer/Dryer Prep
- Sony® 26" Flatscreen LCD Color TV in Living Area
- Sony® Flatscreen Color TV in Bedroom
- AM/FM Dash Radio with Cassette and CD Player
- Sony® Surround Sound Home Theater System with Single-disc DVD Player
- Rearview Color Monitor System
- TV Antenna with Power Booster & Two Interior Jacks
- Satellite Prep—Phone, TV Jack and Receptacle
- Telephone Connection with Phone Jacks in Living and Dash Area
- Two Bedroom Radio Speakers with On/Off Switch
- Roof-mounted Air Horns
- 10 Bc Fire Extinguisher, Carbon Monoxide and Smoke Detectors

### CABINETS & FURNITURE

- Oak Hardwood Cabinets with Raised-panel Double-arched Cabinet Doors
- Hidden-leaf Dinette Table with Four Chairs (Two Fixed, Two Folding)\*

- Polished Corian® Countertop in Kitchen with Undermounted Sink and Flush Sink Covers
- Polished Corian® Countertop with Integrated Bowl in Bathroom
- Residential-style Full-extension Ball-bearing Drawer Guides
- Knife Hinges on Cabinet Doors
- Flexsteel® Furniture
- Pullout Pantry Shelves\*
- Leather/Vinyl Driver/Passenger Seats with Six-way Power, Power Lumbar and Footrest on Oversized Passenger Seat
- Adjustable-height Seat Belts
- Lifts on Bed Top to Access Storage Area
- Storage Shelves Recessed into Rear Cap of Rear Wardrobe Floorplans
- Luxurious Pillowtop Mattress with Quilted Bedspread, Shams and Accent Pillows
- King Bed\*

### ELECTRICAL FEATURES

- 8.0 kW PowerTech Quiet Series Diesel Generator on Slideout Tray
- 50 Amp Electrical Service with Flexible Cord
- Four 6 Volt House Batteries on Pullout Tray
- Battery Disconnect Switch
- 5 Watt Solar Panel
- 2000 Watt Inverter
- Emergency Start Switch
- Exterior Security Lights, One on Each Side
- Midship Side Turn Signals
- Recessed Docking Lights
- Switched Receptacle for Engine Block Heater
- 110 Volt Exterior Receptacle
- Fluorescent Lights Throughout
- Lighted Wardrobe
- Slideout Information Voice Module
- Manually Operated Hold-to-Run Slideout Switch
- ICC Light Switch
- Two 12 Volt Auxiliary Receptacles on Dashboard
- Interior Courtesy Lights
- Mood Lights Recessed in Ceiling

### EXTERIOR FEATURES

- Full-Paint Masterpiece Finish™ with Diamond Shield Front Protective Film
- One-piece Windshield
- Large Chrome Convex Exterior Mirrors with Remote Control and Defrost
- Automatic Entrance Door with Double Step
- Front Entry Door with Power Flush Stepwell Cover
- Side-hinged Baggage Doors
- (Except Door for Exterior Entertainment Center)

- Lighted Exterior Storage Compartments with Cargo Liner, Controlled by Interior Master Switch
- 10,000 lb. Towing Hitch with Two Extra 14 Gauge Wires
- Lighted Acrylic Assist Handle at Entrance Door
- Rear Protective Full-width Tow Guard
- Rear Ladder

### INTERIOR FEATURES

- Padded Vinyl Ceiling
- Day/Night Pleated Window Shades and Lambrequins
- Mini-blinds in Kitchen and Bath Areas
- Hardwood Fascia on Living Area Slideouts
- Simulated Plank Floor in Kitchen, Bathroom and Driver/Passenger Area
- Polished Corian® Routed Backsplash in Kitchen
- Deluxe Carpeting with High-density Padding in Living Room and Bedroom
- Flat-panel Interior Passage Doors
- Interior Assist Handle at Main Entrance Door
- Sun Shades on Driver and Passenger Side Windows
- Power-activated Sun Visors
- Non-powered Vertical Drop Windshield Privacy Shade

### PLUMBING & BATH FEATURES

- Demand Water System with SHURflo® Pump
- Sewage Holding-tank Rinse
- Water Heater Bypass System
- SeaLand™ 500+ China Stool
- Towel Bars and Tissue Holder
- Towel Ladder on Hinged Bathroom Door
- Fiberglass Bathtub/Shower with Glass Shower Door
- Monitor Panel
- Water Pump Switches Located in Bathroom, Kitchen and Exterior, Near Gate Valves
- Exterior Shower
- Water Filter for Entire Unit

### WINDOWS, AWNINGS & VENTS

- Double-pane Tinted Safety-glass Windows
- Fan-Tastic® Vent with Rain Sensor in Kitchen and Bathroom Areas
- A&E® 9000 Bedroom and Slideout Window Awnings
- A&E® Oasis Power Front Entrance Door Awning
- A&E® Weather Pro Power Side Awning
- A&E® Slideout Awning Covers
- Cockpit Overhead Ventilation System

\*CHECK WITH DEALERSHIP ON FLOORPLAN AVAILABILITY.

## OPTIONAL FEATURES

### AIR CONDITIONING & HEATING

- Two 15M Penguin™ Heat Pump Central Air Conditioners
- Extra 15M Penguin™ Heat Pump Central Air Conditioner (43' Floorplans)
- Hydronic Zone Heating System (Replaces Water Heater and Furnace)
- Auxiliary Heater in Bedroom

### APPLIANCES & ACCESSORIES

- Three-burner Range with Oven and Piezo Ignition
- Dometic® 12 cu. ft. Side-by-Side Refrigerator with Icemaker
- Norcold® 12 cu. ft. Four-door Refrigerator with Icemaker and Water Dispenser
- Norcold® Freezer on Pullout Tray
- One-piece Washer/Dryer\*
- Two-piece Washer/Dryer\*
- Dishwasher-in-a-Drawer Below Three-burner Cooktop
- Sony® LCD Color TV with DVD Player in Living Area Overhead Cabinet\*
- SIRIUS® Satellite Radio Capability (Does not include monthly subscription)
- 10-disc CD Player
- External Entertainment Center with 26" LCD TV, AM/FM Radio and CD Player
- Automatic Satellite without Receiver
- In-motion Satellite without Receiver
- Entertainment Center with Relocated Living Area TV
- TripTek™ Electronic Travel Information (Displayed on Rearview Monitor)
- Sideview Cameras
- Navigation System
- CB Radio with Antenna
- CB Antenna
- Engine Assist for Water Heater (Not Available with Hydro Hot Option)

### CABINETS & FURNITURE

- Coastal Cherry Hardwood Cabinets
- Velvet Cherry Hardwood Cabinets
- Light Maple Glazed Hardwood Cabinets
- Distressed Leather/Vinyl Driver/Passenger Seats
- Distressed Leather/Vinyl Swivel Rocker Recliner\*
- Distressed Leather/Vinyl Recliner with Ottoman\*
- Distressed Leather/Vinyl Freestanding Recliner\*
- Distressed Leather/Vinyl L-Lounge\*
- Distressed Leather/Vinyl Sofa\*
- Hide-a-Bed Sofa with Air Mattress\*



## FLOORPLAN SPECIFICATIONS

- Distressed Leather/Vinyl Hide-a-Bed Sofa with Air Mattress\*
- Distressed Leather/Vinyl Combination U-dinette and L-lounge\*
- Booth Dinette with Forward-facing Seatbelts
- Combination Desk/Dinette Table with Two Fixed and Two Folding Chairs\*
- Round Hardwood Dinette Table with Two Fixed and Two Folding Chairs with Large Dinette Window\*
- Folding Coffee Table
- Overhead Cabinet Above Sofa and Dinette (Included with the Power Lock Arm Option)
- Queen Bed

### ELECTRICAL FEATURES

- Solar Prep
- 7.5 kW Onan® Diesel Quiet Series Generator
- Pre-wired for Freezer
- Power Cord Rewind Reel
- Energy Management System
- Roof-mounted Spotlight

### EXTERIOR FEATURES

- Hydraulic Leveling Jacks with Automatic Control (Standard on Tag Axle Floorplans)
- Large Storage Tray with Access from One Side or Either Side
- Small Storage Tray

### INTERIOR FEATURES

- Simulated Marble Floor in Kitchen, Bathroom and Driver/Passenger Area
- Ceramic Floor Tile in Kitchen, Bathroom and Driver/Passenger Area
- Ceramic Floor Tile in Kitchen, Bathroom and Throughout Main Living Area with Custom Area Rug
- Undermounted Solid-surface Sinks
- Center Entrance Door Layout\*

### PLUMBING & BATH FEATURES

- Assist Handle in Bathtub/Shower
- Fold-down Shower Seat
- Corner Bathtub\*
- 110 Volt Heat Pads for Holding Tanks

### CONSTRUCTION FEATURES

- One-piece Molded Fiberglass Roof with 9 mm Decking
- Power Lock Arms on All Slideout Rooms
- Power Baggage Door Locks

### WINDOWS, AWNINGS & VENTS

- Keyless Entry
- Driver's Side Power Window

FLOORPLAN	APP. OVERALL LENGTH <sup>1</sup>	WIDTH	APP. OVERALL HEIGHT	INTERIOR WIDTH	INTERIOR HEIGHT	GREY	SEWAGE	WATER	PROPANE	FURNACE	WATER HEATER
DSDP 4023	40' 8"	101.5"	12' 6"	95.5"	84"	65 gal.	45 gal.	105 gal.	32 gal.	42,000 Btu	10 gal.
DSDP 4024	40' 8"	101.5"	12' 6"	95.5"	84"	65 gal.	45 gal.	105 gal.	32 gal.	42,000 Btu	10 gal.
DSDP 4029	40' 8"	101.5"	12' 6"	95.5"	84"	65 gal.	45 gal.	105 gal.	32 gal.	42,000 Btu	10 gal.
DSDP 4035	40' 8"	101.5"	12' 6"	95.5"	84"	65 gal.	45 gal.	105 gal.	32 gal.	42,000 Btu	10 gal.
DSDP 4036	40' 8"	101.5"	12' 6"	95.5"	84"	65 gal.	45 gal.	105 gal.	32 gal.	42,000 Btu	10 gal.
DSDP 4304	42' 8"	101.5"	12' 7"	95.5"	84"	65 gal.	45 gal.	105 gal.	32 gal.	42,000 Btu	10 gal.
DSDP 4306	42' 8"	101.5"	12' 7"	95.5"	84"	65 gal.	45 gal.	105 gal.	32 gal.	42,000 Btu	10 gal.
DSDP 4307	42' 8"	101.5"	12' 7"	95.5"	84"	65 gal.	45 gal.	105 gal.	32 gal.	42,000 Btu	10 gal.
DSDP 4320	42' 8"	101.5"	12' 7"	95.5"	84"	65 gal.	45 gal.	105 gal.	32 gal.	42,000 Btu	10 gal.
DSDP 4321	42' 8"	101.5"	12' 7"	95.5"	84"	65 gal.	45 gal.	105 gal.	32 gal.	42,000 Btu	10 gal.
DSDP 4323	42' 8"	101.5"	12' 7"	95.5"	84"	65 gal.	45 gal.	105 gal.	32 gal.	42,000 Btu	10 gal.
DSDP 4324	42' 8"	101.5"	12' 7"	95.5"	84"	65 gal.	45 gal.	105 gal.	32 gal.	42,000 Btu	10 gal.

## SPARTAN® CHASSIS INFORMATION

FLOORPLAN	ENGINE HP	AXLE RATIO	FUEL CAP.	WHEELBASE	FRONT GAWR <sup>2</sup>	REAR GAWR <sup>2</sup>	TAG GAWR	GVWR <sup>2</sup>	GCWR <sup>2</sup>	APP. UVW	APP. NCC
DSDP 4023	400	4.88	150 gal.	276"	14,200 lb.	20,000 lb.	—	34,200 lb.	44,200 lb.	28,463 lb.	5,737 lb.
DSDP 4024	400	4.88	150 gal.	276"	14,200 lb.	20,000 lb.	—	34,200 lb.	44,200 lb.	28,418 lb.	5,782 lb.
DSDP 4029	400	4.88	150 gal.	276"	14,200 lb.	20,000 lb.	—	34,200 lb.	44,200 lb.	27,781 lb.	6,419 lb.
DSDP 4035	400	4.88	150 gal.	276"	14,200 lb.	20,000 lb.	—	34,200 lb.	44,200 lb.	28,046 lb.	6,154 lb.
DSDP 4036	400	4.88	150 gal.	276"	14,200 lb.	20,000 lb.	—	34,200 lb.	44,200 lb.	28,243 lb.	5,957 lb.
DSDP 4304	400	4.88	150 gal.	276" + TAG	14,200 lb.	20,000 lb.	10,000 lb.	44,200 lb.	54,200 lb.	31,527 lb.	12,673 lb.
DSDP 4306	400	4.88	150 gal.	276" + TAG	14,200 lb.	20,000 lb.	10,000 lb.	44,200 lb.	54,200 lb.	30,942 lb.	13,258 lb.
DSDP 4307	400	4.88	150 gal.	276" + TAG	14,200 lb.	20,000 lb.	10,000 lb.	44,200 lb.	54,200 lb.	31,730 lb.	12,470 lb.
DSDP 4320	400	4.88	150 gal.	276" + TAG	14,200 lb.	20,000 lb.	10,000 lb.	44,200 lb.	54,200 lb.	31,654 lb.	12,546 lb.
DSDP 4321	400	4.88	150 gal.	276" + TAG	14,200 lb.	20,000 lb.	10,000 lb.	44,200 lb.	54,200 lb.	30,828 lb.	13,372 lb.
DSDP 4323	400	4.88	150 gal.	276" + TAG	14,200 lb.	20,000 lb.	10,000 lb.	44,200 lb.	54,200 lb.	30,778 lb.	13,422 lb.
DSDP 4324	400	4.88	150 gal.	276" + TAG	14,200 lb.	20,000 lb.	10,000 lb.	44,200 lb.	54,200 lb.	31,762 lb.	12,438 lb.

### SPARTAN® MOUNTAIN MASTER CHASSIS

The Spartan Mountain Master and Mountain Master GT don't just lead the way, they pave the way! Spartan's Mountain Master chassis is America's most popular, most reliable, highest-performing diesel pusher. Experience the power, the superior ride and handling and excellent driving performance in your coach built on a Spartan Mountain Master chassis. The Mountain Master chassis provides excellent resale value and carries a 36-month, 50,000-mile, no-deductible warranty, which includes roadside assistance for the entire warranty period. Sit back and enjoy the ride!



Lengths, heights, widths and dry weights are approximate. Weight will vary based on optional equipment added to the above base weight.

<sup>1</sup> Lengths do not include the rear ladder.

<sup>2</sup> Specifications are supplied by the chassis manufacturer.

**GAWR:** Gross Axle Weight Rating is the maximum permissible weight for an axle.

**GCWR:** Gross Combination Weight Rating is the value specified by the manufacturer of the vehicle as the maximum allowable loaded weight of this motorhome and any towed trailer or towed vehicle.

**GVWR:** Gross Vehicle Weight Rating is the maximum permissible weight of a fully loaded motorhome.

**UVW:** Unloaded Vehicle Weight is the weight of this motorhome as built at the factory with full fuel, engine oil and coolants. The UVW does not include cargo, fresh water, LP gas or dealer-installed accessories.

**NCC:** Net Carrying Capacity is the maximum weight of all occupants, including the driver, personal belongings, food, fresh water, waste water, LP gas, tools, tongue weight of towed vehicle, dealer-installed accessories, etc., that can be carried by the motorhome.

# Dutch Star

2007 || DIESEL MOTORHOME



## WHAT'S IN A NAME?

When you buy a Newmar, you get more than an RV. You get the benefit of all we at Newmar believe in:

- Building products worthy of our customers' highest expectations for quality, durability and value
- Blending advanced manufacturing techniques with the time-tested practices of Amish craftsmanship
- Leading the industry with innovations that enhance RV living
- Offering responsive, effective customer service and support
- Being conscientious, loyal and fair in our business dealings
- Treating everyone according to the highest moral and ethical principles

This is what we value—and have valued from the day we opened shop in 1968. This is what the name Newmar has come to mean for so many. And this is what we'll hold on to for as long as we do business.



WHEN YOU KNOW THE DIFFERENCE™

**NEWMAR CORPORATION**  
355 N DELAWARE ST  
PO BOX 30  
NAPPANEE IN 46550-0030  
574-773-7791 FAX 574-773-2895

[www.newmarcorp.com](http://www.newmarcorp.com)

Your Official Newmar Dealer