



Live out loud.







Live out loud.

www.safarimotorcoaches.com

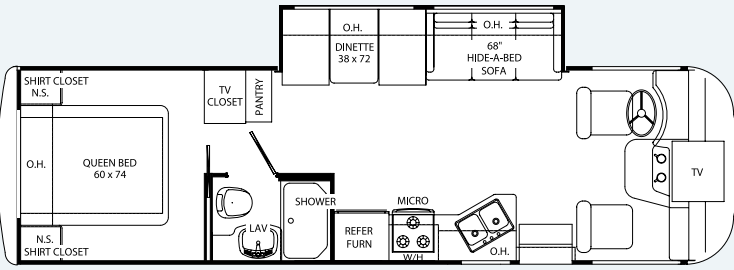
JUST A CLICK AWAY

Safari is always just a click away. You'll find dealer links, service center locations, owner news and all the latest information on your Passage on our friendly, easy-to-navigate website. It's a direct link to everything Safari that can be accessed anytime, day or night, from home or on the road. Visit www.safarimotorcoaches.com.

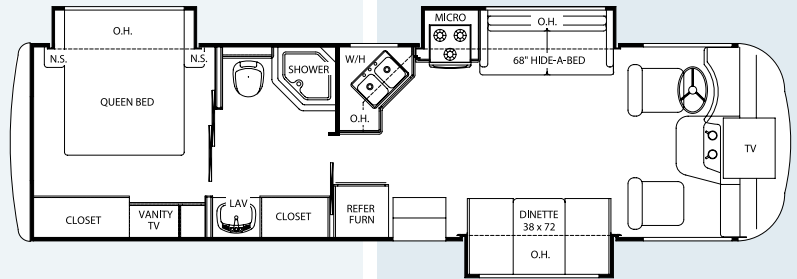


PASSAGE 08 FLOORPLANS

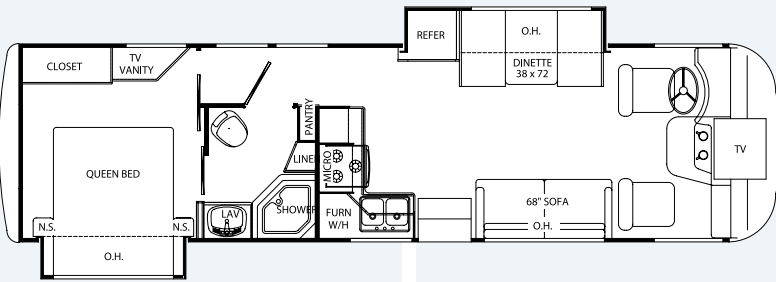
300



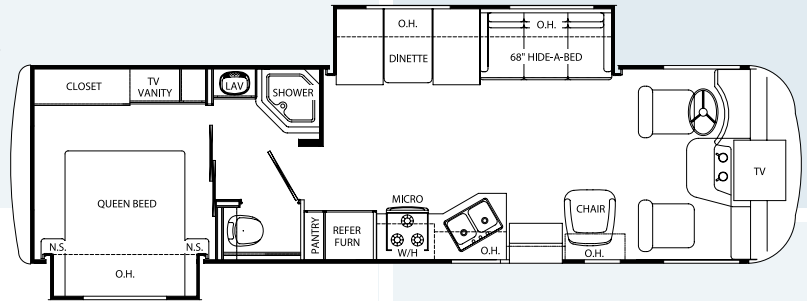
310



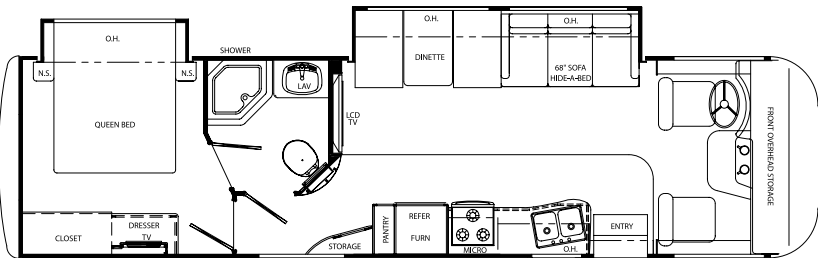
315



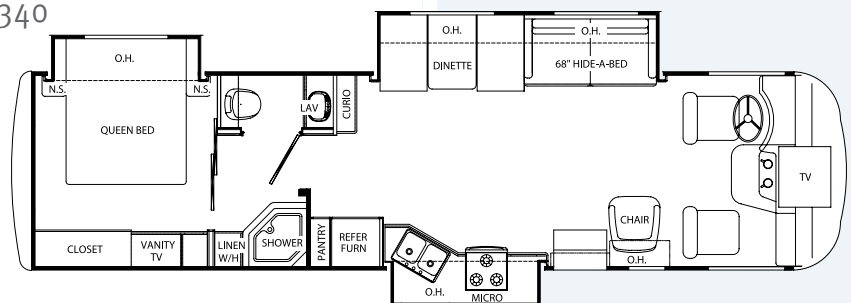
321



330



340



EXTERIOR

- Tubular aluminum welded sidewalls, roof and floor
- Fiberglass exterior sidewalls with high-density block foam insulation
- Air conditioning duct work molded into roof insulation
- Automatic electric entrance step
- In floor rigid heat duct
- Exterior utility center (N/A: 300, 310, 315)
- Exterior shower (Opt. 300, 310, 315)
- Rubber roof
- Automatic hydraulic leveling jacks (Opt. 300, 310, 315)
- Patio awning and slide-out awnings
- Roof ladder

EXTERIOR OPTIONS

- Pined skirt
- Exterior shower (Std. on 321, 340)

AUTOMOTIVE

- 5,000 lb. receiver hitch
- Wood grain dash kit
- Dash fans
- Deluxe exterior mirrors
- One-piece fiberglass front and rear caps
- Fog lights
- AM/FM/CD/Cassette radio – weatherband and SIRIUS® satellite ready
- Stainless steel wheels with valve extenders

AUTOMOTIVE OPTIONS

- Ultra™ Leather pilot and co-pilot captains chairs
- Six way power pilot seat
- Back-up monitor
- Heated, remote exterior mirrors
- Spare tire and rim (N/A: 340)

INTERIOR

- Residential linoleum in entry way, galley and bath
- Large metal entry grab handle
- 13,500 BTU front roof air conditioner
- Raised panel overhead cabinet doors
- Brushed nickel finish hardware
- Mini blinds throughout
- Soft touch vinyl ceiling (N/A: 300, 310, 315)

INTERIOR OPTIONS

- Decors: Brass Ring, Autumn Trail II
- 13,500 BTU rear roof air conditioner (Req. 50 amp service and 5500 watt generator)
- Day/night shades throughout
- Fantastic fan in living area
- Thermal pane windows
- Ultra™ Leather hide-a-bed sofa (N/A: 315)
- Fabric sofa with pedestal table in place of dinette (310)
- Ultra™ Leather sofa with pedestal table in place of dinette (310)
- Ultra™ Leather sofa (315)
- Fabric recliner IPO barrel chair (N/A: 300, 310, 315)
- Ultra™ Leather recliner in place of barrel chair (N/A: 300, 310, 315)
- Hard vinyl ceiling (N/A: 321, 340)
- Fabric hide-a-bed sofa (N/A: 315)
- Overhead lights in living room

GALLEY

- Double door refrigerator
- 3-burner high output gas range with oven
- Microwave oven
- Laminate countertops
- Large stainless steel double bowl sink
- Slide-out pantry (N/A: 300, 310, 315)
- Full extension metal drawer guides

GALLEY OPTIONS

- Half-Time microwave oven with 3 burner range top

ENTERTAINMENT

- Cable television and satellite prep
- 24" color television in front overhead (N/A: 300, 310, 315)
- 20" color television in front overhead (N/A: 321, 330, 340)
- 20" color television in bedroom (N/A: 300, 310, 315)
- Television cabinet in bedroom

ENTERTAINMENT OPTIONS

- Surround sound home theater system with DVD player
- Exterior entertainment center with CD player
- 14" color television-bedroom (N/A: 321, 330, 340)
- DVD player
- Satellite dish

BEDROOM AND BATHROOM

- Inner spring mattress
- Bedspread and pillow shams
- Vanity with stool (N/A: 300, 315)
- China bowl toilet
- Power bath vent
- Skylight in shower
- Neo-angled shower with glass door (N/A: 300)

SAFETY

- Entry door with deadbolt lock
- Smoke, LPG, and carbon monoxide detectors
- Fire extinguisher
- Three-point seat belts
- Seat belts throughout

ELECTRICAL SYSTEM

- Guardian RV Quietpact® 40G (3600 watt) generator (One A/C only) (N/A: 321, 340)
- Guardian RV Quietpact® 55G (5500 watt) generator (N/A: 300, 310, 315)
- 30-amp service
- Marine-style detachable power cord
- 6-gallon gas water heater
- Water heater bypass kit
- Battery disconnect
- Emergency start switch
- "Command Central" systems control switch/monitor panel

ELECTRICAL SYSTEM OPTIONS

- 50 amp service/gas elect water heater (5.5 gen. required)
- Onan Microquiet™ 4000 (4000 watt) generator (N/A: 321, 340)
- Guardian RV Quietpact® 55G (5500 watt) generator
- Onan RV Marquis Gold (5500 watt) generator
- Second auxiliary battery

STORAGE

- Pass-through storage areas (N/A 300, 321)
- Flush mount radius luggage doors
- Heated holding tanks (Opt. on 300, 310, 315)
- Heated and enclosed roto-cast. holding tanks (Std. on 321, 340)

PASSAGE 08 WEIGHTS & MEASUREMENTS

	300	310	315	321	330	340
Weights (Workhorse Chassis - 8.1 L Vortec - V-8) * (Lbs.)						
Gross Vehicle Weight Rating	16,000	18,000	18,000	18,000	21,000	21,200
Gross Combined Weight Rating	22,000	22,000	22,000	22,000	26,200	26,200
Weights (Ford Chassis - 6.8 L Triton - V-10) * (Lbs.)						
Gross Vehicle Weight Rating	16,000	18,000	18,000	18,000	20,500	20,500
Gross Combined Weight Rating	TBD	TBD	TBD	TBD	25,500	25,500
Measurements						
Wheelbase	190"	190"	190"	190"	208"	208"
Overall Length (Workhorse)	22' 11"	28' 1"	29' 11"	31' 2"	TBD	32' 0"
Overall Length (Ford)	22' 2"	27' 4"	29' 2"	30' 5"	TBD	31' 3"
Overall Height, Including A/C	10' 8"	10' 8"	10' 8"	10' 8"	10' 8"	10' 8"
Interior Height	80"	80"	80"	80"	80"	80"
Overall Width	99"	99"	99"	99"	99"	99"
Awning Size	14'	18'	18'	18'	18'	18'
Tank Capacities ** (Gal.)						
Fuel	75	75	75	75	75	75
LPG (Pounds)	68	68	68	68	68	68
Fresh Water	50	50	50	50	50	50
Waste Water	40	40	40	40	40	40
Gray Water	40	40	40	40	40	40
Water Heater	6	6	6	6	6	6
Furnace (BTU's)	35,000	35,000	35,000	35,000	35,000	35,000



ASSISTANCE

SALES • TECH • ROADSIDE



WE'RE HERE. ANYTIME, EVERY TIME.

- Reach us anytime — literally — via our live customer support line.
- Drive in to one of our 350 Service Centers.
- Enjoy the first year free when you enroll in our Owner Advantage Roadside Assistance Program.
- See where it all begins with a tour of one of our facilities in Indiana or Oregon. Call 1-800-650-7337 or 1-800-634-0855 to find out more.

* Towing capacity is limited by GCWR; your vehicle's towing capacity is the difference between the GCWR and the actual vehicle weight, including all water, fuel, passengers and cargo. Your towed vehicle should be equipped with auxiliary brakes if the weight of the towed vehicle exceeds 1,000 lbs. Consult your owner's manual for further towing information.

** All tank capacities are estimated based upon calculations provided by the tank manufacturers and represent approximate capacities. The actual "usable capacity" may be greater or less than the estimated capacities based upon fabrication and installation of the tanks.

*** Actual filled LP capacity is 80% of listing due to safety shut-off required on tank.

The actual overall length of the recreational vehicle may differ from that indicated in the brochure due to variances in the manufacturing process and/or installed components. The actual length may be greater or less than that indicated. Due to the large variety of options and floorplan arrangements available to our customers, actual weights for each unit can differ significantly. Safari provides a weight sticker on each unit we produce which includes that unit's tank capacities and approximate weight. Consult your local Safari dealer for unit availability and further information. The information printed in this brochure reflects product design, fabrication, and component parts at the date of printing. The manufacturer reserves the right, at any time, to make changes in product design or material or component specifications as its sole option, without notice. This includes the substitution of components of a different brand or trade name which will result in comparable performance. All information printed in this brochure is subject to change after the date of printing. Some features shown or mentioned in this brochure are optional and may only be available in selected floorplans. Photographs may show props or decorations that are not standard equipment on Safari models. Safari, the Safari logo and its design, are registered trademarks. All other products and company names are trademarks and/or registered trademarks of their respective holders. While the color of the motorhome's exterior and the interior fabrics depicted in this sales brochure are fair and reasonable depictions, the colors depicted may not be an exact match of the actual colors because of the variances in photo-processing and variances caused by inserting the photographs within the sales brochure. Due to product improvements, changes during the model year and/or transcription errors that may occur, information represented within this brochure may not be accurate at the time of your purchase. If certain information is significant to your purchasing decision, please confirm the information with your dealer prior to submitting your order. Component part and appliance manufacturers issue limited warranties covering those portions of the recreational vehicle not covered by the Limited Warranties issued by Monaco Coach Corporation. To learn which specific component parts and appliances are excluded from the Limited Warranties issued by Monaco Coach Corporation, please contact your selling dealership or Monaco Coach Corporation directly, or review the warranty packet inside the recreational vehicle.

BEING DIFFERENT MAKES ALL THE DIFFERENCE.

At Monaco Coach Corporation, we always strive to be the best. And that means thinking outside the box. Giving you more of what you want in an RV. Like our exclusive Roadmaster chassis. PanaSuite™ full-wall slides. And programs like Monaco Financial Services and 24/7 roadside assistance. No other manufacturer can match Monaco's offerings. No one even comes close. Why not discover the difference for yourself? Visit www.monacodifferent.com.

Kay
KAY TOOLSON,
CEO



“No other manufacturer can match Monaco's offerings. No one even comes close.”



www.safarimotorcoaches.com

91320 Coburg Industrial Way, Coburg, OR 97408

1.800.458.8735

WARRANTIES

12 MONTH/24,000 MILE
basic limited warranty

5 YEAR/50,000 MILE limited warranty on
aluminum or steel frame structure of
sidewall, roof, front and rear cap

Applies to certain models. See owner's
manual for complete details.