

2006

*Mirada*<sup>TM</sup>

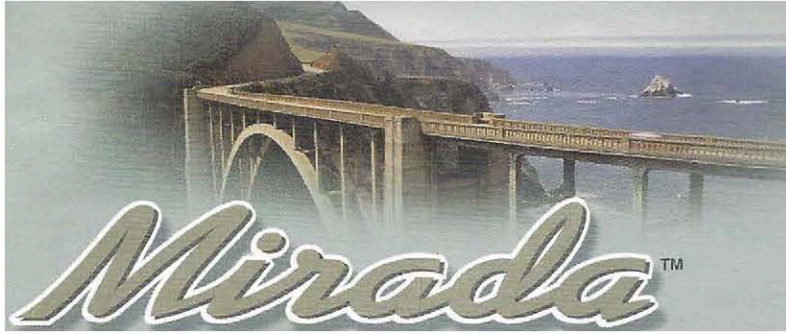
Class A Motorhomes by Coachmen®

f i



Leader to the Great Outdoors®





by Coachmen

## Pursue Your Passion.

The Mirada™ offers you a safe and affordable way to pack up and go for the weekend or for an extended stay. Enjoy carefree travel with your family, go where the open road takes you, and share the beauty and splendor of America. Experience the freedom to go wherever you want, whenever you want, and create special family memories that last a lifetime. Take pleasure in the independence, flexibility and leisure you get from owning a Mirada™ by Coachmen RV.



The optional *in dash* stereo complete with cassette and CD player, and built-in weather band has large, easy-to-use buttons that let you keep your eyes on the road rather than on the radio.



The durable vinyl engine cover is sewn together for a custom fit, and the convenient snack tray offers storage space for your driving accessories.

## Decor Selections

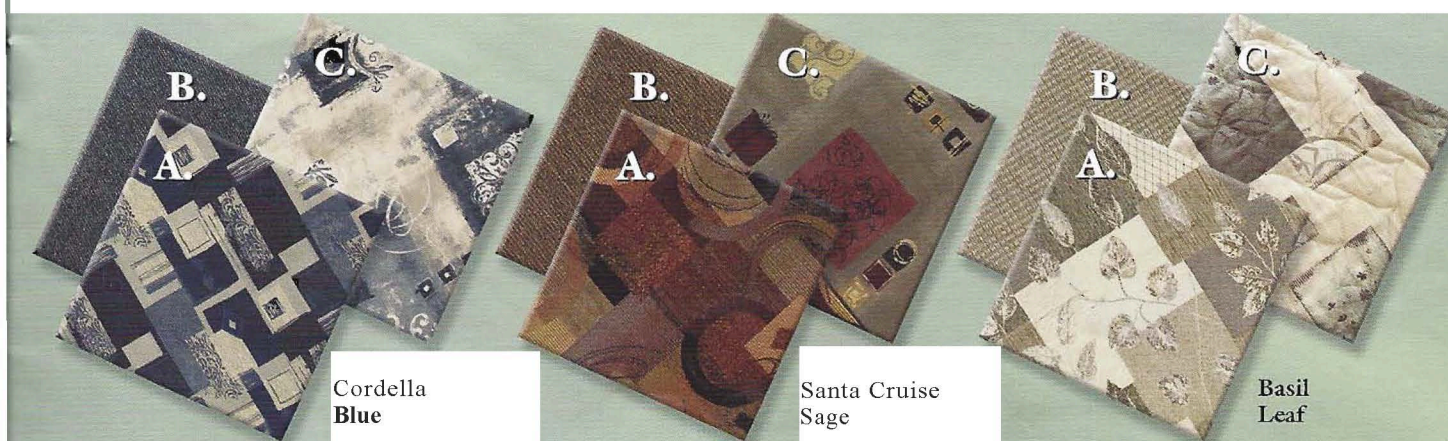
**Fabric Key:**

- A. Main
- B. Accent
- C. Bedspread





You'll be amazed by the view both out the windows and the coach of the Mirada™. Enjoy an exciting array of amenities like the swivel lounge chair, deluxe kitchen faucet with pullout sprayer, flat-screen overhead television and raised panel cabinet doors (option). (Shown in Terrace Birch cabinetry and Basil Leaf interior decor)







The spacious Mirada™ 310 DS has plenty of room to prepare a full meal in the kitchen area, play games at the table and watch the flatscreen television from the couch, all in the same space. The sofa and Boston booth **dinette** will even convert to provide additional sleeping spaces. (Shown in Monterey Haze and Cordella Blue interior decor)



The Mirada™ bedroom is not only elegant with its designer bedspread and valances, but it is also practical with plenty of storage space behind its beautiful **cabinetry**.

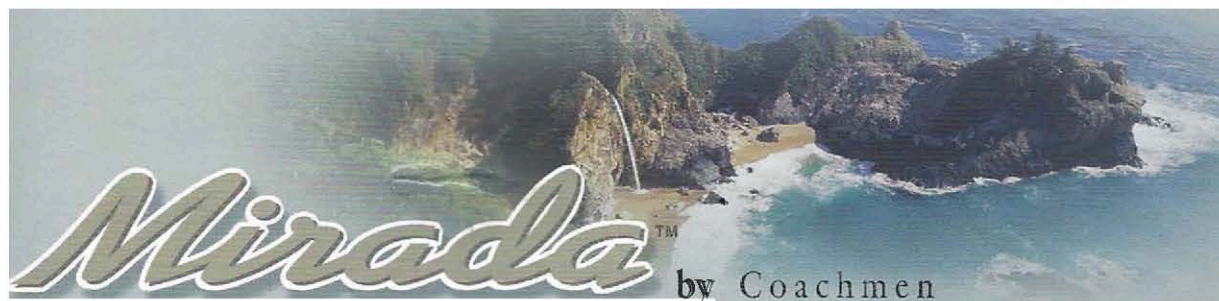


Every Mirada™ is equipped with a designer kitchen faucet that features an integrated sprayer. Combined with extra deep sink bowls, **food** prep and clean up is a breeze.



A standard residential style glass shower door gives the bath area a high-end appeal. (Standard on 290KS, 310DS, 358TS)





## Ask Your Dealer About These Coachmen® Exclusive Design Features.



Coachmen's SureLine™ Electrical Harness provides color coded wiring and specific wiring schematics for easy serviceability. High quality automotive electrical connectors and Alltloom protective covering make for a reliable and durable harness. The wires are grouped together and neatly nicked into the framework under the coach, safe from road debris.



**NO-MESS™**  
TERMINATION

By Coachmen

Another Coachmen exclusive is the No-Mess™

Termination system. This easy to swivel boom arm provides a convenient storage location for the termination hose. Your storage bay stays cleaner and the hose can remain connected after use.



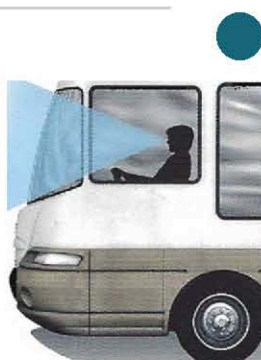
**SAFETY FIRST**

All Coachmen Motorhomes utilize Duratube™ full length copper LP lines with double flared ends to ensure a tight seal and years of corrosion free use. Coachmen builds quality for the long haul.



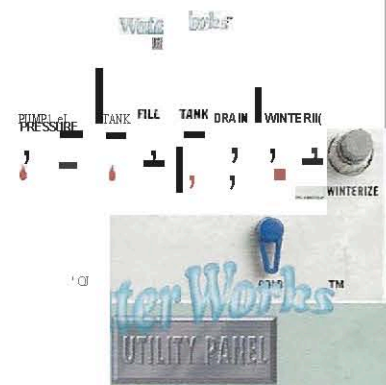
**Even Cool™**  
By Coachmen

The Coachmen Even Cool™ air conditioning system is ducted through the crowned, vacuum bonded roof and utilizes AMOCO insulated ductwork with radiused corners to provide for maximum cooling efficiency.



**SIGHTRITE™ DASH™**  
By Coachmen

The Coachmen Sight Rite™ dash was designed with a 20 degree incline for increased visibility and reduced front blind spot.



By Coachmen

Our easy to use Water Works™ Utility Panel with large dials, simply displays how to perform each function. No lengthy explanations or wordy booklet are necessary.



**SAFETY FIRST**

Another Coachmen innovation is the optional Children 1st™ Child Safety Restraint System. There is space for two child seats, and each of the two locations provide two lower anchors and one top anchor for enhanced 3-point protection for your children.



# Mirada™

by Coachmen

## Specifications

	290KS	300QB	310DS	348DS	358TS
Chassis	FORD	FORD	FORD	FORD	FORD
Chassis Model	F-53	F-53	F-53	F-53	F-53
Engine Size	V10-6.8L	V10-6.8L	V10-6.8L	V10-6.8L	V10-6.8L
Wheel Base	228"	190"	208"	228"	228"
Rear Axle Ratio	5.38	5.38	5.38	5.38	5.38
Tire Size	19.5"	19.5"	19.5"	19.5"	19.5"
GVWR(lbs.)	15,000	15,700	20,500	20,500	22,000
CW(lbs.)	14,287	13,071	15,607	16,356†	16,356†
GAWR Front (lbs.)	7,000	6,000	7,660	7,000	7,500
GAWR Rear (lbs.)	11,000	11,000	13,500	13,500	14,500
GCWR (lbs.)	26,000	26,000	26,000	26,000	26,000
Exterior Length	32' 10"	31' 8"	33' 4"	36' 1"	35' 9"
Exterior Clearance Height*	11' 4"	11' 4"	11' 4"	11' 4"	11' 4"
Exterior Width	8' 3"	7' 11"	8' 3"	8' 3"	8' 3"
Sleeping Capacity	4	4	4/5	4/5	4/5
Interior Width	96"	92"	96"	96"	96"
Interior Height	80"	80"	80"	80"	80"
Fuel Capacity (gal.)	75	75	75	75	75
Alternator Amps	130	130	130	130	130
Fresh Water Capacity (gal.)	75	75	51	51	51
Waste Water Capacity (gal.)	37	35	35	35	35
Grey Water Capacity (gal.)	35	35	35	35	35
Water Heater Capacity	6	6	6	6	6
LP Gas Capacity (lbs.)	85	85	85	85	85
Furnace Rating (x 1,000) BTU	30	30	30	30	30

\* = Includes Clearance for Air Conditioner  
t = Estimated

**GVWR (Gross Vehicle Weight Rating):** The weight of the unit, including the UVW plus all fluids, cargo, optional equipment and accessories. For safety performance, do not exceed the GVWR.

**CW (Curb Weight):** The weight of the unit without factory or options, plus allowance for the weight of full RL capacity. The "payload capacity" of all other optional equipment and accessories can be determined by subtracting the CW from the GVWR.

**GAWR (Gross Axle Weight Rating):** The total weight each front/rear axle, suspension and tire system is designed to the unit, care should be taken to balance cargo weight in consideration of the GAWR.

**GCWR (Gross Combined Weight Rating):** The maximum total weight of the loaded unit, plus a tow vehicle, of both the unit and tow vehicle, fuel for each, all other fluids, equipment and accessories.

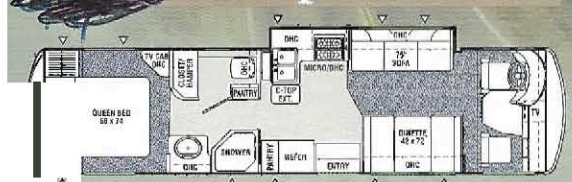
**Wider Widths:** Numerous Coachmen floorplans feature the "wide body" design concept, which gives you significantly enhanced interior living space and

In making your purchase decision, you should be aware that a few states restrict access on some or all roads within the state to vehicles with a maximum 96" width, although special road usage permits may be available. Vehicles up to 102" in width are permitted in the vast majority of States. You should confirm the road usage laws in the state of interest to you purchase decision. If width is of concern to you, we invite you to consider the broad array of other Coachmen models offered in the standard 96" width.

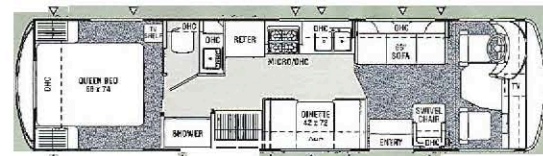
**IMPORTANT NOTE:** All capacities are approximate, and all dimensions are nominal. Coachmen motorhomes are designed to allow for a number of trips with two people or short trips with more. Accordingly, each unit allows ample room for sleeping, seating, fluids and cargo. While the customer is the beneficiary of this design, the customer also must select the proper combination of load and tow capacity exceeding the chassis weight capabilities. Consumer may need additional braking capacity to tow loads greater than 1,000 pounds.

Indicates Carpeting  
Indicates Outside Storage Location

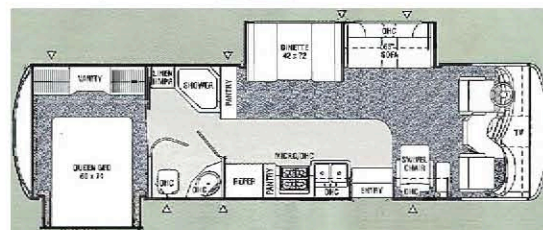
## Floorplans



290KS A)



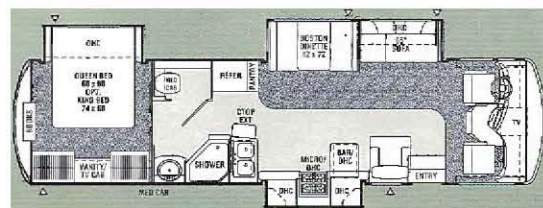
300QB (All'ail'ble w/option: A)



310DS B)



348DS B)



358TS (Available w/option: B)

## Available Options



A. Residential Dinette



B.

Seat belts should always be worn for passenger safety. Scar belts are provided at most locations to allow convenience in selecting which seat to use. It is the responsibility of the driver to ensure that the number of passengers allowed while the vehicle is in motion will always be within the stated sleeping capacity. Though extra seating may be provided, for your safety, please consult with your Coachmen dealer and confirm the existence of any interior design or specifications material to your purchase decision.

All information contained in this brochure is believed to be accurate at the time of publication. However, during the year, it may be necessary to make revisions and Coachmen reserves the right to make all such changes including changes in prices, colors, materials, equipment and specifications, as well as the addition of new models and the discontinuance of models shown in this brochure. Therefore, please consult with your Coachmen dealer and confirm the existence of any interior design or specifications material to your purchase decision.



## Standard Features

## Optional Features

### INTERIOR APPOINTMENTS

- Terrace Birch Cabinetry
- Raised Panel Overhead Cabinet Doors
- Residential Metal Drawer Guides
- Techwood® Drawer Sides
- Linoleum Flooring (Kitchen, Bath)
- Mini-Blinds Throughout
- Slider Windows - w/ Safety Glass
- Reclining, Swivel Pilot Seats
- Jack Knife Sofa
- Lounge Chair (Except 290KS)
- Innerspring Boston Booth Dinette
- TV Shelf in Bedroom (300QB)
- TV Cabinet in Bedroom (Except 300QB)
- Driver/ Passenger Snack Tray
- 12V Power

### INTERIOR EQUIPMENT

- 20" FlatScreen TV - Coach
- AM/ FM CD Player w/ 4 Speakers
- TV Antenna and Rotor Package
- Cable TV Jacks (Coach & Bedroom)
- LP Leak Alarm
- Smoke Detector
- Carbon Monoxide Detector
- Fire Extinguisher
- Phone Jack

### GALLEY

- Microwave Oven w/ Vent Light
- 3-Burner (High Output) Range
- Double Door Refrigerator
- Freezer Shelf & Refrigerator Light
- Double Bowl Stainless Steel Sink
- Drainage (Except 290KS)

### BATH AND WATER

- Marine Toilet
- Glass Shower Door (290KS, 310DS, 358TS)
- Pleated Shower Door (300QB, 348DS)
- Power Bath Vent
- 6-Gallon E.J. Water Heater
- Demand Water Pump
- One Piece ABS Tub Surround
- Skylight Over Shower
- No-Mess™ Termination System
- Water Works™ Utility Panel

### ELECTRICAL / HEATING /

#### AIR CONDITIONING:

- 30 Amp Power Cord
- 55 Amp 110/ 12-V Power Converter
- GFI Circuit
- Outside Receptacle (DS)
- Generator Ready with Mount Kit
- Emergency Start Switch
- Battery Disconnect
- Auxiliary Battery
- Patio Light
- 30,000 BTU E.I. Furnace
- 13,500 BTU Ducted Air Conditioner w/ Even Cool™
- Wired for Air Conditioner
- Prewired for Satellite Dish
- Remote Control

- Command Center Molar Panel
- Entry Step Switch Panel

### SLEEPING

- Queen Bed
- Deluxe Innerspring Mattress
- Bedspread and Pillow Shams
- Privacy Drape - Cab

### AUTOMOTIVE / EXTERIOR

- Tilt Steering Wheel
- Cruise Control
- Intermittent Wipers
- Dash Air Conditioning
- Sight Rite™ Dash
- Radial Tires
- Full Metal Wheel Covers
- Front & Rear Mud Flaps
- Power Entry Step - Single
- Laminated Floor & Sidewalls
- Crowned, Laminated Rubber Roof
- Semi-Basement Floor Design
- Store Rite™ Roto Cast Compartments
- Fiberglass Front Cap
- Dead Bolt Lock-Entrance Door
- Hydraulic Leveling Jacks (Optional 300QB)
- Patio Awning
- 5,000 lb Towing Hitch w/ 7-Way Plug
- Radius Baggage Doors
- Radius Entry Doors
- Rear Bezel w/ Light Bar
- Steel Rear Bumper

### Deluxe Package Includes:

- 4.0 KW Gas Generator (Onan)
- Standard Wheel Inserts
- Spare Tire w/ Stainless Steel Cover
- Owner Information Package

### Premier Package Includes:

- Deluxe Package Items Plus:
- Convenience Package
- (Rechargeable Flashlight & Vac.)
- Night Shades\*
- VCR/DVD Combo\*
- Exterior Entertainment Center
- AM/ FM Stereo with CD, Cassette and Weather Band
- Rear Vision Camera\*
- Composite Sink Covers
- Range Cover\*
- Electric Heated Holding Tanks
- Passenger Side Console with Computer Hookups
- Roof Ladder\*
- Outside Exterior Mirrors
- Painted Skirt with Graphics\*
- Front End Paint Protection\*

### Additional Options

- Monterey Haze Cabinetry
- Residential Dinette with Four Chairs (290KS, 300QB)
- Raise Panel Doors Throughout (Monterey Haze)
- Glass Shower Door (290KS, 310DS, 358TS)
- Child Safety Dinette System
- Hide-A-Bed Sofa (310DS, 348DS, 358TS)
- Kingbed 74"x 80" (348DS, 358TS)
- 14" FlatScreen TV - Bedroom (290KS)
- 20" FlatScreen TV - Bedroom (N/A 290KS, 300QB)
- Drivers Map Light
- 2-Channel Stereo (Pack of 4)
- Large Double Door Refrigerator (Except 300QB)
- 5.5 KW Gas Generator (Onan)
- 50 Amp Service w/ Detachable Cord
- 2nd 13,500 Ducted Roof A/C
- 2nd 11,000 Ducted Roof A/C
- 2nd Coach Battery
- Hydraulic Leveling Jacks - (300QB) (Standard on Slide Models)
- Paint w/ Graphics (2 - Selections)
- CSA UpEt
- Front End Paint Protection (Temporary)
- Slideout Awning - Bedroom (310QB, 348DS, 358TS)
- Slideout Awning - Coach (Slide Models)

\*Items also available as a freestanding option

## Graphics Selection

Pale Jade



Sand Castle







## Discover the Coachmen Advantages

### Service After the Sale

**Industry Leading Buckstopper™ Warranty –** Coachmen's exclusive **Buckstopper™** Limited Warranty provides one-year coverage on most parts, components and appliances. Coachmen stands behind their **product** and is supported by a network of over 300 service centers.

### **Two Year Structural & Major Components Manufacturer's Warranty –**

Coachmen provides a two-year structural and major components manufacturer's warranty, along with a complete written Warranty **Summary** Guide, for your peace of mind.

### **Comprehensive Owner's Information –**

For your convenience we offer published materials on key equipment and options, as well as information pertaining to **of important** components. We also offer a true Trouble Shooting and Maintenance Guide for the simple answers to frequently asked questions.



### **Toll Free Service Numbers –**

Our toll free phone numbers provide you with direct access to a Coachmen RV Service Representative.

### **Dealer Support Tools –**

Coachmen makes sure that their dealers are well equipped and trained to **service** your needs with: Systems Manuals, PDI Manuals, Electronic Parts Catalogs, Coach-Link® "On-Line" **Electronic** Dealer Communication System and continual service training.

### **Service Support Center Website –**

Coachmen provides **you** access to key information **24 hours** a day through the Internet. On-line you can find a Service Dealer Locator, Maintenance Information, Trouble Shooting Information, Product Warranty Information, Customer "E-Assistance", Frequently Asked Questions (FAQ's) and Publications ordering, dating back to 1972 models.

### **Priority Parts Ordering –**

Coachmen provides a **program** for overnight parts shipment in critical repair situations.

### Coachmen Caravan Camping Club™

Coachmen Caravan **Camping** Club is your ticket to making friends for life. Share old stories and make new, in the company of fellow Coachmen Caravan members. With the purchase of a Coachmen RV, you are invited to join one of the nation's largest manufacturer sponsored RV clubs with a **FREE** membership. As part of the Coachmen Caravan family, you will receive incredible membership benefits that will help to ensure your safety and enjoyment throughout your RV experiences. Enjoy **your** Coachmen RV more with the Coachmen Caravan **Camping** Club.



Coachmen Recreational Vehicle Company, LLC  
P.O. Box 30, Middlebury, IN 46540  
P.O. Box 948, Fitzgerald, GA 31750

Visit our website at: [www.coachmenrv.com](http://www.coachmenrv.com)

©2005 Coachmen Recreational Vehicle Company, LLC •  
All rights reserved. Litho in USA 6105

