

# VIEWFINDER

*by CruiserRV*



*Lightweight Luxury*



Introducing the All New

**VIEWFINDER**  
*Signature*

The ViewFinder Signature  
Edition Package

setting a new standard for luxury  
now available on all models

[www.cruiserrv.com](http://www.cruiserrv.com)





# VIEWFINDER

## *Signature*

With even more ViewFinder models to choose from, consider adding the NEW Signature Edition package and enjoy even more innovation. Hand-glazed cabinet doors, solid surface kitchen countertops, frameless windows and larger flat screen TVs are only a few of the features you'll experience with the Signature!



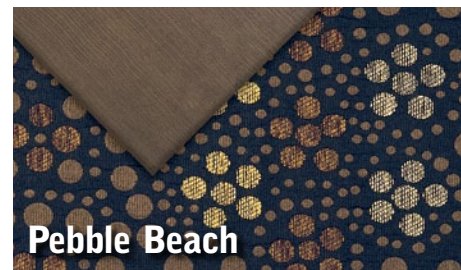
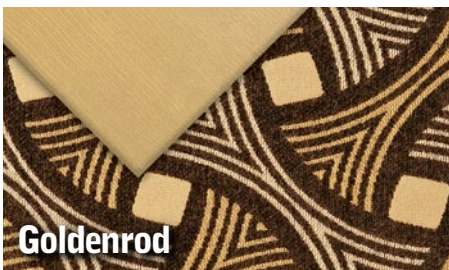
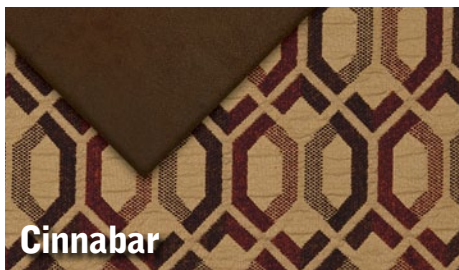


**V-24SD**  
The front "V" kitchen shown has plenty of storage and conveniences built in. The innovative design of the front cap provides an added... **60 cubic feet of space.**

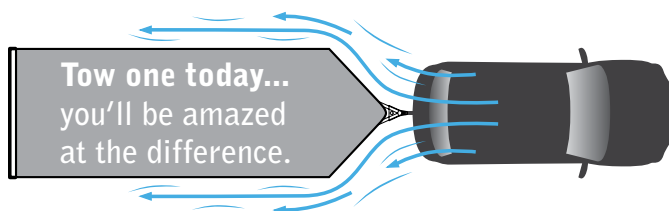


## VIEWFINDER

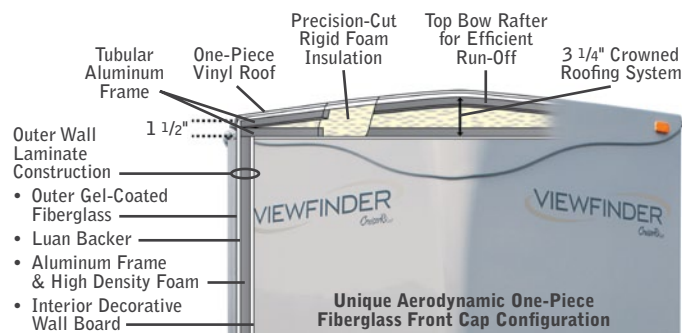
Designed for comfort and luxury from the ground up, the ViewFinder is outfitted for the true RV enthusiast. From well apportioned standard features to the amazing option packages available, you'll quickly discover the ViewFinder has plenty to offer.



## V-nose Advantage



Enjoy greater fuel efficiency with the front fiberglass V-cap design. The ViewFinder is specifically engineered to minimize air resistance as encountered with traditional RVs.







## V-28RLSS

The barrel ceiling lends an air of distinction to the spacious living room with overhead storage and oversized windows. With a full 6' 11" of height, you'll be amazed at the open feel and incredible look of this design.

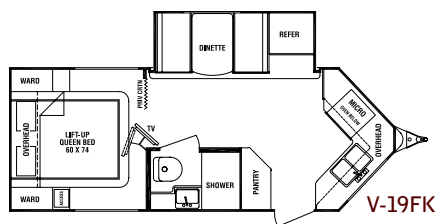


## V-21FB

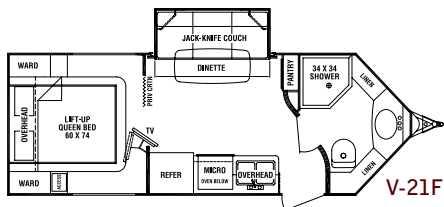
This beautifully appointed interior shows off the warm glow of the solid cherry cabinet doors. An amazingly large bathroom is featured in the front of this model, as well as a versatile sofa slideout, which increases space and it easily converts for sleep.



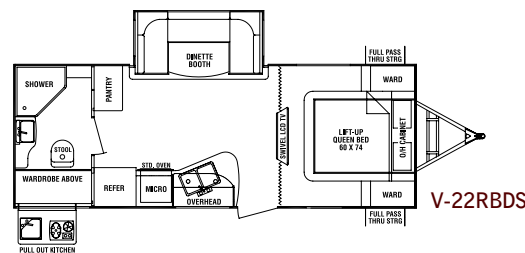
# The ALL NEW Signature Edition Package is available on your choice of the Conventional cap or V-nose cap designs.



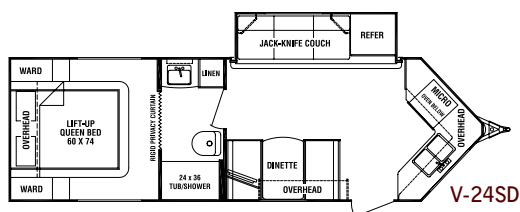
V-19FK



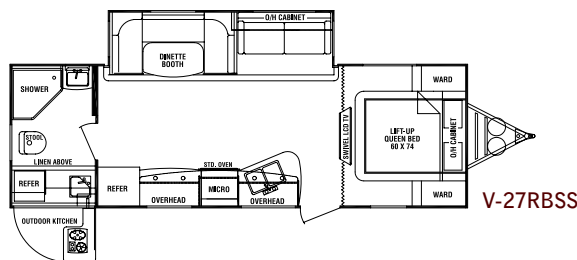
V-21FB



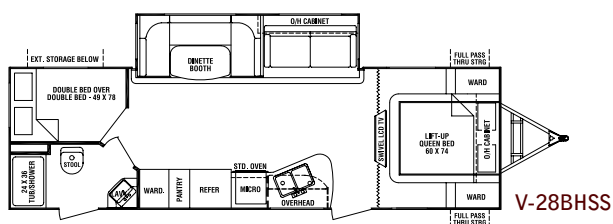
V-22RBDS



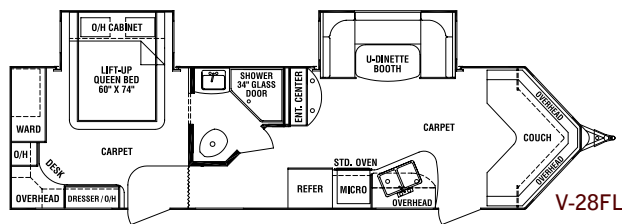
V-24SD



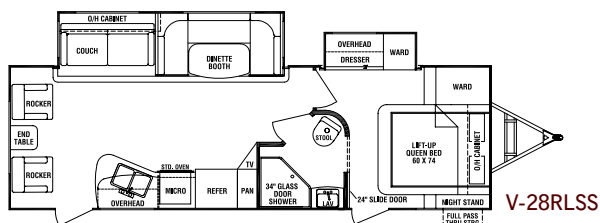
V-27RBSS



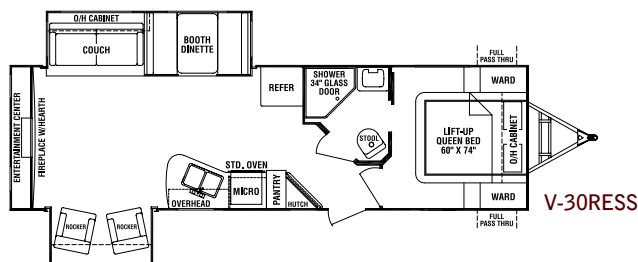
V-28BHSS



V-28FL



V-28RLSS



V-30RESS

SPECIFICATIONS	V-19FK	V-21FB	V-22RBDS	V-24SD	V-27RBSS	V-28BHSS	V-28FL	V-28RLSS	V-30RESS
Exterior Length	22' 2"	23' 4"	26' 1"	26' 5"	29' 7"	31' 9"	32' 1"	32' 0"	32' 9"
Exterior Width	90"	90"	96"	90"	96"	96"	90"	96"	96"
Exterior Height	10' 2"	10' 2"	10' 10"	10' 2"	10' 10"	10' 10"	10' 2"	10' 10"	11' 1"
Interior Height	6' 6"	6' 6"	6' 6"	6' 6"	6' 11"	6' 11"	6' 6"	6' 11"	6' 11"
Bed Size	60" x 74"	60" x 74"	60" x 74"	60" x 74"	60" x 74"	(1) 60" x 74" (2) 49" x 76"	60" x 74"	60" x 74"	60" x 74"
Dinette Bed Size	37" x 70"	N/A	41" x 81"	37" x 72"	41" x 81"	41" x 81"	41" x 81"	41" x 81"	41" x 67"
Couch Size	N/A	40" x 68"	N/A	40" x 68"	42" x 62"	42" x 62"	25" x 101"	42" x 62"	42" x 62"
Axle Weight (lbs.)	3,248	3,519	4,425	3,383	4,875	4,950	4,710	4,780	TBD
Hitch Weight (lbs.)	625	554	445	795	585	660	990	645	TBD
Dry Weight (lbs.)	3,873	4,073	4,870	4,178	5,460	5,565	5,700	5,425	TBD
GVWR (lbs.)	6,225	6,154	7,445	6,395	7,585	7,660	7,990	7,645	TBD
Cargo Capacity (lbs.)	2,352	2,081	2,575	2,217	2,125	2,095	2,290	2,220	TBD
Fresh Tank (gal.)	36	36	36	36	36	36	36	36	36
Gray Tank (gal.)	38	38	38	(2) 38	38	38	38	38	38
Black Tank (gal.)	38	38	38	38	38	38	38	38	38
LP Bottle (lbs.)	40	40	40	40	40	40	40	40	40
Power Conv. (amps)	55	55	55	55	55	55	55	55	55
Elec. Ign. Furn (BTU)	20K	20K	20K	20K	20K	20K	20K	20K	30K

NOTE: Weights are approximate and based on standard features. Optional equipment is not included. Cruiser RV, LLC constantly strives to improve its product. All specifications are subject to change without notice or obligation. See your local Cruiser RV dealer today to review a current model.





Oven/Range



Stainless steel pull-out  
sprayer kitchen faucet



In-ceiling Speakers



Optional Flatscreen TV



Optional Microwave



Frameless Windows  
(Signature only)



LED Lights  
(Signature only)



Optional Electric Awning



Optional BBQ Grill



Cast Aluminum Wheels  
with Nitrogen Filled  
Radial Tires

## Standard Features

- Dark grey fiberglass cap with docking lights
- Aluminum Framed construction
- Aluminum framed floor with 5/8" T&G plywood decking
- Nitrogen filled radial tires
- Aluminum wheels
- Sealed, heated underbelly
- Slam-latch cargo doors
- Pull-out kitchen faucet
- Real hardwood Cherry raised panel cabinet doors
- Oil rubbed bronze hardware
- Stainless steel kitchen appliances
- Cold crack resistant flooring

## Signature Edition Package:

- 13.5k BTU ducted A/C
- Electric awning
- Undermount spare tire and carrier
- Stainless steel microwave
- 6 gallon DSI gas/electric water heater
- Outside shower
- Exterior BBQ Grill and bracket
- Upgrade to 32" LCD TV
- High gloss silver walls
- Upgraded graphics package with poured logo
- Frameless, bonded glass windows
- LED exterior lighting
- Power tongue jack
- Front and rear electric stabilizer jacks
- Equa-Flex suspension system
- Solid surface kitchen countertop
- Glazed Cherry raised panel cabinet doors
- Ever-Pedic memory foam mattress
- Decorative lighting
- Fireplace (per floorplan)
- Enclosed tub or shower surround
- Base and crown molding trim package
- Hide-A-Bed with storage drawer (per floorplan)
- Upgraded designer bedspread
- Swivel TV/Fireplace (V22RBDS, V27RBSS, V28BHSS)
- Designer valances and night shades

## ViewFinder Option Package:

- 13.5k BTU A/C
- Electric awning
- Spare tire & carrier
- Stainless steel microwave
- 6 gallon DSI gas/electric water heater
- Outside shower
- Exterior BBQ Grill and bracket
- 24" LED TV w/bracket

## Other Popular Options:

- Fantastic Vent
- Convection Microwave Upgrade
- Power Tongue Jack
- Ultra-Light Power Jack Pack
- Bike Rack
- Freestanding Table and Chairs (Signature Package only)

## Cruiser RV, LLC

7805 North SR 9 • P.O. Box 130 • Howe, IN 46746

Ph 260-562-3500 • Fax 260-562-2210

Toll Free 866-277-5630

[www.cruiserrv.com](http://www.cruiserrv.com)



Your Dealer