

# ***EVEREST***

## *2005*



Absolute Luxury  
On the Road to Adventure





## ALL-ALUMINUM CONSTRUCTED FIFTH WHEEL

In the entire history of our industry, there have been only a few designs which have approached the full potential possible in a recreational vehicle. We believe you will agree that the 2005 Everest is such an achievement.



This thoughtfully designed Everest entertainment center is angled for optimum viewing. The desk is computer friendly with an optional telephone/modem connection for your convenience. Enjoy listening to music from true home theater Surround Sound while you absorb the cozy warmth from your optional fireplace.



Everest 343L floor plan shown here in Cairo decor.

## No Details Have Been Missed

When you sit back in this lavish coach, you will notice the fine attention to detail, from the generous countertop space to the huge bay windows and sculpted carpet. Enriching the living space is an abundance of the highest quality, residentially constructed all-wood cabinetry. Notice the elegance added by the rich detail on the real oak slide fascia. Beyond the fascia, ample overhead storage and designer lighting enhance the 6'4" slide-out, completing a living area with full residential proportions and atmosphere.

Certain floor plans will not accommodate these features.





Styled in the subtle, restful tones of our Cambridge Bay color scheme, the 293P will please even the most discriminating traveler. It features a huge campsite window alongside your front door. A pair of optional recliner/glidens, rarely found in fifth wheels of less than 32 feet, creates the ideal seating for enjoying the view. The peninsula rear kitchen provides maximum space for efficient meal preparation and serving while adding to the residential ambience. Also notice the extensive banks of cabinetry, another outstanding feature of this Everest floor plan.

## Expect Excellence...

Inspired by the absolute luxury of a premiere resort or a high-rise condominium suite, Everest interiors offer the ultimate in comfort and total contentment. Every beautiful and convenient detail, room by room, every unseen construction and convenient utility feature, brings you the complete enjoyment of your travel experience. You know what you want, and now you know where to find it.

This is the promise of Everest.

Everest by Keystone...created for those who prefer to make no compromises.

Certain floor plans will not accommodate features shown.

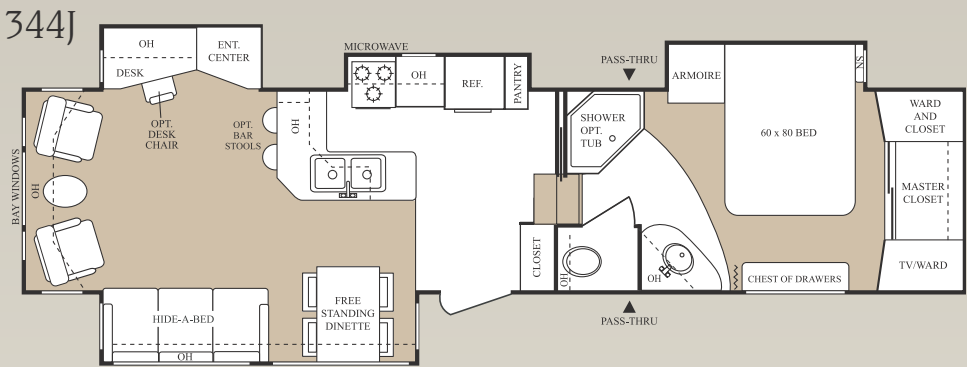
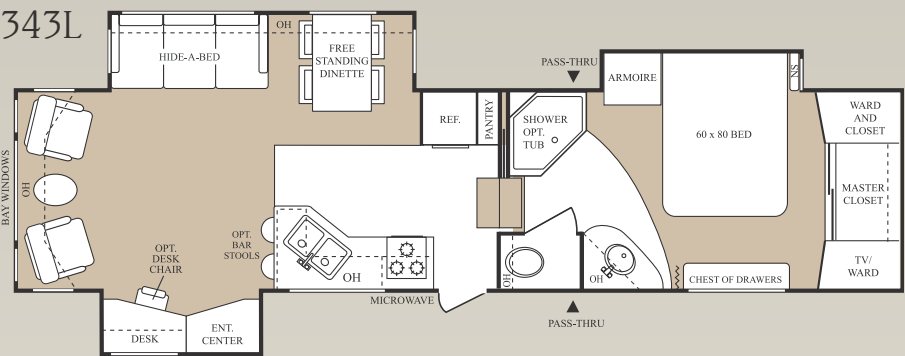
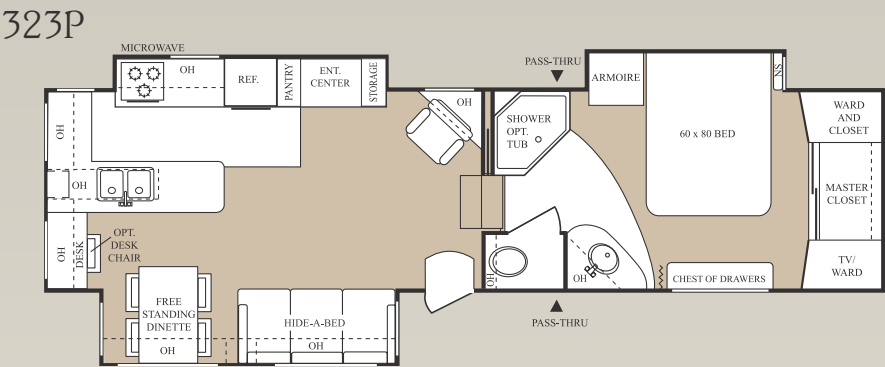
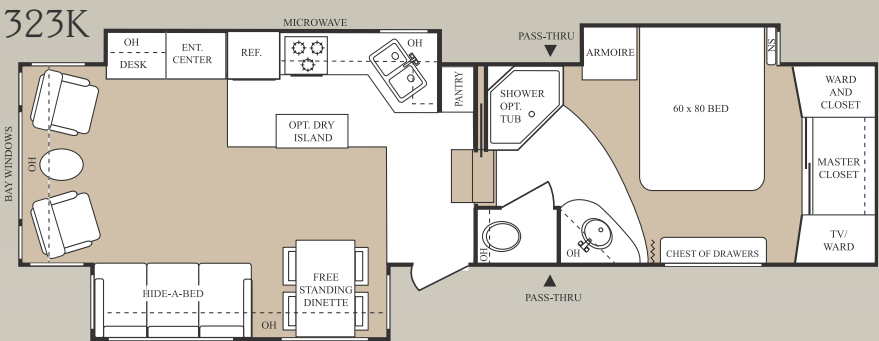
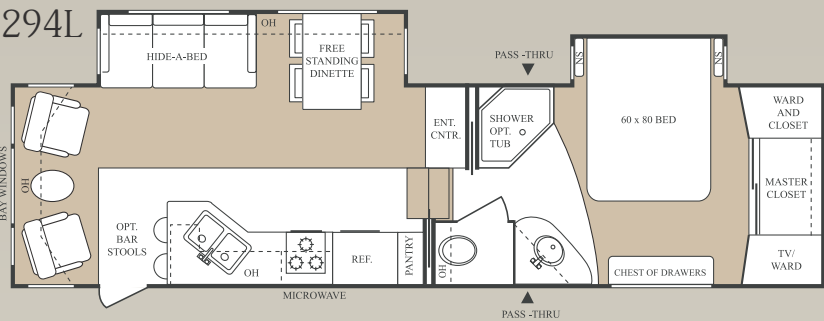
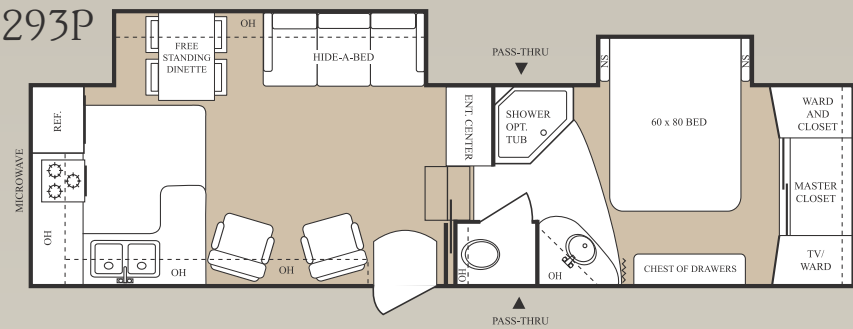


An elegantly shaped wooden arch enhances etched-glass doors leading from the kitchen/dining area into the sunken living room of Everest's tri-level, four slide-out floor plan, the 364Q. The atmosphere of residential elegance, light and warmth created by this stunning design makes it one of the most beautiful interiors ever seen in a recreational vehicle at any price.



One of the four slide-out areas in the 364Q is this atrium-style dining room with padded, upholstered lambrequins framing the windows. Color coordinated designer chairs have a hidden underseat storage area. The table features both a pull-out extension and a cleverly concealed storage area beneath the top. Day/night shades allow you to control the setting from sunny and bright to cozy and candlelit.





Everest proudly features Endura™ high-end raised-panel solid wood cabinet doors, created by residential furniture craftsmen.

Endura achieves superior dimensional stability through the combining of today's advanced manufacturing technology and the timeless beauty of Nature's hardwood. The result...a cabinet door, Warranted for 10 Years.

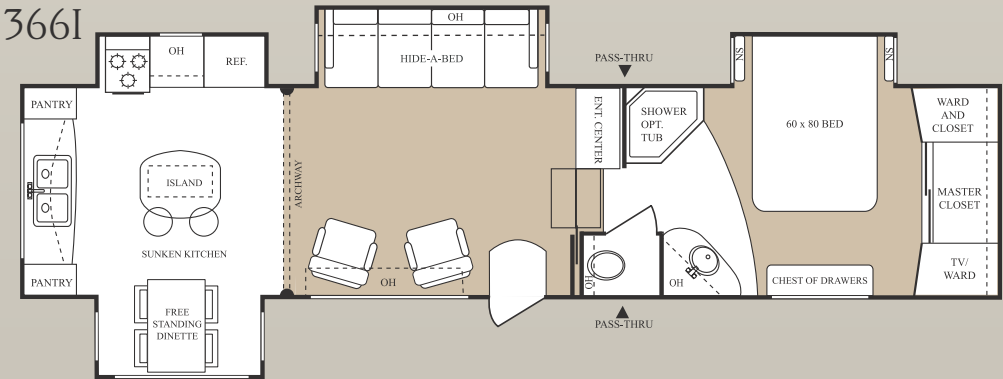
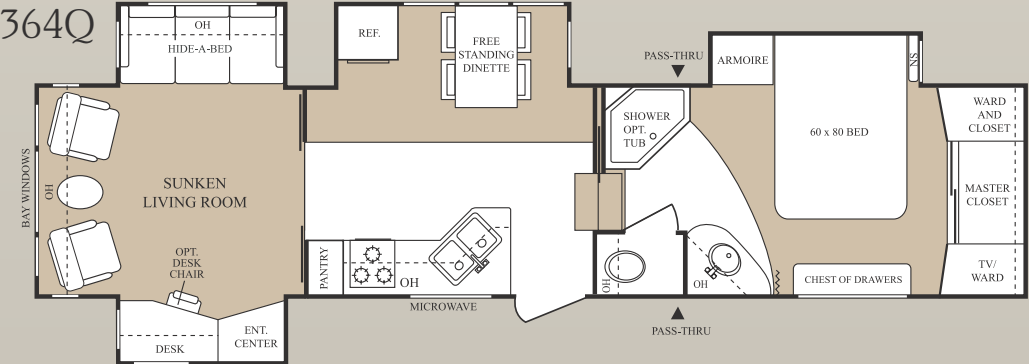
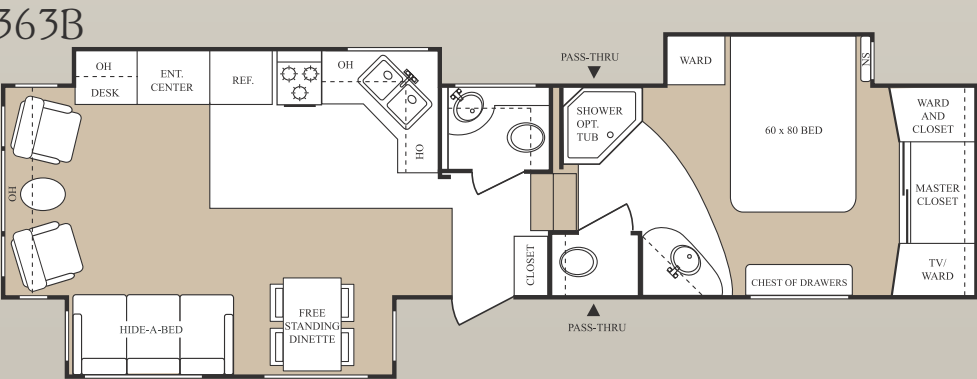
EVEREST FIFTH WHEELS									
Models	293P	294L	323K	323P	343L	344J	363B	364Q	366I
GVWR	12700	12480	14000	13900	13980	14020	TBA	14320	TBA
UVW (Unloaded Vehicle Weight)	9540	9600	10690	10880	11080	11900	TBA	11700	TBA
CCC (Cargo Carrying Capacity)	3160	2880	3310	3020	2900	2120	TBA	2620	TBA
Hitch Weight	2340	2080	2040	1960	2000	2020	TBA	2320	TBA
Exterior Length	32' 10"	32' 10"	34' 11"	34' 11"	36' 11"	37' 1"	37' 1"	37' 1"	37' 1"
Exterior Width	8'	8'	8'	8'	8'	8'	8'	8'	8'
Height with A/C	12' 8"	12' 8"	12' 8"	12' 8"	12' 8"	12' 8"	12' 8"	12' 8"	12' 8"
Fresh Water (gal.)	66	66	66	66	66	66	66	66	66
Waste Water (gal.)	39	39	39	39	39	39	39	39	39
Grey Water (gal.)	77	77	39	77	77	54	77	54	54
Tire Size	LT235 85R16E	LT235 85R16E	LT235 85R16E	LT235 85R16E	LT235 85R16E	LT235 85R16E	LT235 85R16E	LT235 85R16E	LT235 85R16E

All Everest kitchens are provided with a flush-mount deep double-bowl porcelain sink with a residential, single-lever faucet and a pull-out sprayer.



Extended hitch pin adds 9" to all models. High-gloss fiberglass option adds approximately 300 lbs.

Single Level Bedroom and Bathroom Suite Standard on Every Floor Plan!



Features, floor plans, and specifications are subject to change without notice. All lounge chairs/recliners and end tables are optional.



# Absolute Luxury Starts with Construction

Everest's engineers are committed to you, the customer. Every layer, every support, every building material has been researched and then chosen with expert knowledge by RV industry veterans to give our customers a structurally sound, easy-to-tow fifth wheel such as we ourselves would like to own. Shown here are some of the key components of Everest's quality-conscious construction story.

## Sidewalls

- A. One Piece High-Gloss Fiberglass Gooseneck Corner Wraps
- B. Gel-Coated Filon Fiberglass (High-Gloss Fiberglass optional)
- C. 1/8" Luan Wood Backer
- D. Second Layer 1/8" Luan Wood Backer w/ Staggered Seams
- E. Solid Block (EPS - Expanded Polystyrene) Insulation
- F. Radius Window Corner Blocks
- G. Metal Backing Strips (EGS- Electro-Galvanized Sheet)
- H. 2" Welded Aluminum Side-wall Studs



The one-piece, high-gloss gooseneck corner wrap protects your Everest during travel — a highly functional aerodynamic design detail that also beautifies your exterior.

## Tires and Chassis

- BB. Shock Absorbers on each Wheel
- CC. Large 16" E Rated Tires
- DD. Easy-to-Lube Axles



The exterior utility center allows easy maintenance in one stop, at the off-door side. Note that the water heater and furnace vents are here, away from your front entry and patio.

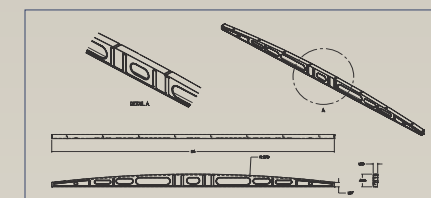
EVEREST IS BUILT WITH PRIDE AND INTEGRITY BY NORTH AMERICA'S LEADER IN TOWABLE RV'S.



## Full Aluminum Superstructure for Strength and Ease of Towing

## Roof

- V. 1/8" Ceiling Decking with Interior Vinyl Ceiling
- W. Uni-Rafter™ Stamped Steel, Tapered Roof Rafters (See Illustration Below)



- X. Fiberglass Batten Insulation (Double Insulation optional)
- Y. 3/8" Weyerhaeuser Structure Wood Roof Decking with 25-year Warranty
- Z. Aluminum Radius Roof Corner Molding Wrap
- AA. One-piece (seamless) EPDM Rubber Roof with 12-year Warranty

## Caps

- S. Molded High-Gloss Fiberglass Front and Rear Caps
- T. Fiberglass Batten Insulation
- U. 2" Welded Aluminum Front and Rear Cap Studs



## Floor

- I. 27 ounce Residential - grade Sculpted Carpet with Teflon Stain Protection
- J. Carpet Padding
- K. 5/8" Seamless Wood Floor Decking with 25 Year Warranty
- L. Fiberglass Batten Insulation (Double Insulation optional)
- M. 3" Welded Aluminum Floor Joists on 12"- 16" Centers
- N. Darco Wrap (Main Floor)
- O. 10" Steel "Powder Coated" I-Beam Frame

- P. Fiberglass Batten Insulation
- Q. Astro-Foil (Bubble Pack) Insulation
- R. One-piece (Seamless) Fluted Polypropylene Fully Enclosed Sub-Floor

## INSULATION FACTORS

Walls — R-9  
Roof — R-15\*  
Floor — R-29\*

\*Insulation values are calculated utilizing the Optional Double Insulation Package



Everest's one-piece fluted polypropylene completely enclosed, double-insulated and heated subfloor.

Features, floor plans, and specifications are subject to change without notice.





Everest offers you ultimate convenience with many kitchen plans to choose from. The family-size rear kitchen in the 3661 floor plan, above, is an excellent example. Every Everest kitchen includes a 22" oven, a Space-Maker™

microwave, double-door refrigerator, single-lever sink faucet with pull-out sprayer, built-in spice rack/knife holder, wood-style flooring, and Endura™ 10-year warrantied cabinetry.



Everest's impressive bathroom has an easy step-in garden shower and a residential six-panel lavatory door as well as ample storage space. The perfect accommodations for an extended trip!

## BATH & BEDROOM STANDARDS

- Single-Level Floor in Master Bedroom & Bathroom
- Armoire (Most Models)
- Garden Shower with Glass Shower Door
- Skylight in Bathroom
- Power Vent in Bath
- Foot Flush Toilet
- 6-Panel Bath Door
- Residential Queen-Size Bed (60" x 80")
- Large Under Bed Storage Drawer
- Innerspring Mattress
- Bedspread and Shams
- Shoe Box Storage
- Laundry Chute
- Hidden Pull-Out TV Tray

## BATH & BEDROOM OPTIONS\*

- 13,500 BTU A/C in Bedroom (Non-Ducted)
- Wire and Brace for 2nd A/C in Bedroom (A/C not included)
- Create-a-Breeze Roof Vent
- Porcelain Toilet
- Garden Tub in place of Shower

\*N/A on all models

## LIVING ROOM STANDARDS

- Sculpted Residential Carpet
- Flush Floor Slide-Outs w/ 64" Headroom
- Floor Ducted Heat
- Ceiling Paddle Fan with Light
- White Clamp-Ring Windows
- TV Antenna
- 5-Speaker Home Theater Surround Sound System with Hidden Sub-Woofer and CD/DVD/Tuner
- Cable TV Hook-Up / Satellite Dish Ready
- Create-a-Breeze Roof Vent
- Phone Jack
- Day/ Night Shades
- Hide-a-Bed Sofa

## LIVING ROOM OPTIONS\*

- 27" TV
- Fireplace (N/A on 294L, 293P, 3661)
- Ottoman with Storage
- Desk Chair (323P, 343L, 344J, 364Q)
- Cloth or Leather Recliner/Glider(s)
- End table (N/A on 293P, 323P, 3661)

\*N/A on all models

## KITCHEN STANDARDS

- Residential Raised-Panel Endura™ Cabinet Doors with 10 year warranty
- Double-Door Refrigerator
- Solid Oak Wood Edge Countertop in Kitchen
- Space-Maker™ Microwave Oven
- 3-Burner Range with Oven, Folding Range Cover
- Lighted Power Range Hood
- Fluorescent Light in Kitchen
- Double-Bowl Porcelain Kitchen Sink
- Free-Standing Dinette Table with Pull-Out Extension and 4 High-Back Chairs with Storage
- Spice Rack with Knife Holder
- Pull-Out Pantry
- Large Double-Door Refrigerator
- 6-Panel Wood Refrigerator Front



323K – Optional Island Kitchen

## KITCHEN OPTIONS\*

- Booth Dinette (Some Models)
- Sink Cover
- Water Purifier
- Island Kitchen Base ( 323K only)
- Bar Stools (2) (294L, 343L, 344J, 3661 only)

\*N/A on all models



You'll love the comfort and beauty of Everest's spacious Master suite bedroom. Residential touches include the full 60"x80" queen-size bed, the four-drawer dresser with shoe-box storage, neo-angled front closet with pull-out TV shelf, extra-large armoire, and much more.

Certain floor plans will not accommodate features shown.



# Absolute Luxury Includes Carefree Maintenance & Storage



Another expertly planned Everest detail allows you plentiful storage in the Standard easy-access slide-out pantry.



Underseat storage



Hidden laundry chute



Cleaning goes quickly with Everest's Central Vacuum System. Plug it in outside or inside. Empty or clean the bag using your exterior access plug-in, then store the hose in the underbelly compartment. You'll never have to tote or store a vacuum again!



Every Everest fifth wheel features a front utility storage compartment complete with racks, bins and hanging hooks.



Stow-Away Storage! 130-Plus Cu.Ft. of felt-finished, unobstructed storage space, perfect for carrying along any item.

## EXTERIOR STANDARDS

- 12-Gallon Gas/Electric Water heater with DSI
- Tinted Safety Glass Windows
- Folding Entry Handle
- Hydraulic Selector Valves for Slide-Outs
- Highgloss Fiberglass Front Cap and Rear Cap
- Alumi-Core (Aluminum Super-Structure in Walls and Floor)
- Uni-Rafters™
- Stunning Exterior Graphics and Luxurious Interior Decors
- Stow-Away Storage — Multi-Functional Exterior Storage System (130-Plus Cu. Ft.)
- Patio Awning
- Rear Ladder
- Gutters with Rain Spouts
- Powered Front Landing Jacks
- Shock Absorbers
- Stabilizer Jacks
- Easy-To-Lube Axles
- 16" Tires and Wheels
- Hydraulic Pump Override
- Monitor Panel
- LP Leak Detector
- Enclosed and Heated Underbelly with Double Insulated Tanks
- No-Fuss Flush System for Waste Tank
- Water Heater Bypass Kit
- Two 30 lb. LP bottles with Auto Switch-Over
- 15,000 BTU A/C — Ducted
- SnapJacks (Easy-to-Use Front Landing Jack Pins)
- 50-amp Service with Detachable Cord

\*N/A on all models

\*\*Mandatory Option

Certain floor plans will not accommodate these features.

## MORE OPTIONS\*

- Under-Carriage Spare Tire Kit with Spare Tire
- Aluminum Wheels
- High-Gloss Fiberglass Sidewalls
- Generator Prep
- Heat Strips for Holding Tanks (Extra Protection-Heated Holding Tanks Std.)
- Security Lights
- Central Vacuum System w/Exterior Storage Hook-up
- Double Insulation- Roof and Floor
- Slide-Out Awnings
- Exterior Shower
- Washer-Dryer Prep
- Carbon Monoxide Detector\*\*

Everest is a product of:



2642 Hackberry Drive, Goshen, IN 46526

(574) 535-2100

[www.keystone-everest.com](http://www.keystone-everest.com)



Go RVing  
Life's A Trip™

For More Information, Contact Your Everest Dealer:

Product information is as accurate as possible at the time of publication. Features, floor plans, and specifications are subject to change without notice. Some features listed and shown are optional.

R 11/04