

WILDWOOD  
DLX LODGE



360° OF  
MEMORIES



YOUR HOME AWAY FROM HOME.

DLX LODGE

WILDWOOD LODGE  
**T4092BFL**

SHOWN IN GRANITE DÉCOR

*Shown with Optional TV*





Master bedroom



Stairs to loft



Upstairs loft



Bathroom with 51" shower



Kitchen shown with optional toe kick LED lighting



WILDWOOD DLX  
**T402QBQ**

SHOWN IN COGNAC LEATHER

Shown with Beauflor® Plank Wood Linoleum



Foot flush toilet (Std.)



Residential ceiling fan and light in living area and bedroom



Recessed stove with glass stove cover (Optional in DLX only)



Optional outside kitchen model 402QBQ



Optional jiffy sofa can replace lower bunk



WILDWOOD DLX  
**T39FDEN**

SHOWN IN GRANITE DÉCOR

Shown with Beauflor® Plank Wood Linoleum



**EXCELLENT CRAFTSMANSHIP**

Our skilled craftsmen have years of experience building beautifully finished RVs. Forest River, started building RVs in 1996 and today is the number one producer of travel trailers in the world.\* Wildwood has been part of that since the beginning.

\* Independent data provided for January through August 2015 by Statistical Survey's, Inc. Grand Rapids, Michigan.



MODEL 39FDEN



39FDEN Main Slide



A



B



C



D



E



F



G



H



I



J



K



L

## POPULAR FEATURES

# WILDWOOD DLX

- A. Beauflor® Plank Wood Linoleum
- B. Drawers with 30 Pound Ball Bearing Drawer Guides
- C. Weather-Proof Exterior Speakers
- D. Wood Blinds (Living Area)
- E. Lazy-Boy® Hide-A-Bed Sofa
- F. Patio Door
- G. 5/8" Tongue and Groove Floor Decking
- H. Large Dresser Drawers
- I. New Stainless Steel High Rise Faucet with Sprayer
- J. Living Room Ceiling Fan
- K. Recessed stove with glass stove cover (Optional in DLX only)
- L. Foot Flush Toilet





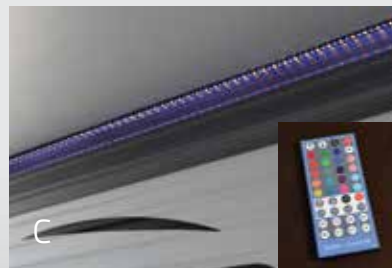
# UPGRADES ON THE WILDWOOD LODGE

- M. Free Standing Dinette
- N. Serta® Dreamscape Mattress
- O. 8' Flat Ceilings
- P. Comfort FlexBed Frame
- Q. Skylight in Kitchen
- R. 4-Burner Free-standing Range with 20' x 20" Oven Door
- S. Fantastic™ Fan
- T. 20 Gallon Electric Water Heater
- U. Shaw Stain Resistant Carpet
- V. Electric Fireplace (Most Lodge Models)



# CONSTRUCTION BUILT TO LAST. WILDWOOD LODGE

- 1** Radius triple entry steps
- 2** 102" exterior width for increased living space (96" on DLX Models)
- 3** Tinted safety glass windows
- 4** Standard patio door (3 window door on some models)
- 5** 15" radial tires (16" with opt. fiberglass exterior)
- 6** 12" powder coated I-beam
- 7** 5/8" tongue and groove plywood flooring
- 8** Shaw® stain resistant Carpet with padding
- 9** Radius fender skirt
- 10** 2" wall studs 16" on center
- 11** 15K BTU A/C (13.5K on DLX)
- 12** Seamless one-piece roof (12 yr. warranty)
- 13** 3/8" roof decking (full walk-on roof)
- 14** R-7 fiberglass insulation throughout
- 15** Dual 30# bottle cover w/ easy access
- 16** 5" truss roof rafters 16" on center
- 17** 0.24 aluminum siding (fiberglass opt.)
- 18** 84" interior height DLX (96" interior height Lodge)



- A** LED interior lighting (Opt.)
- B** 2" Wood blinds (Opt. on Lodge only)
- C** Colored LED awning light with Remote (Opt.)
- D** Ceiling fan in bedroom (NA 4092BFL & 4102BFL)

# WILDWOOD DLX STANDARDS & OPTIONS



## COMFORT & CONVENIENCE

84" interior height with cathedral ceilings  
Black framed tinted safety glass windows  
Powered self supporting slide rooms  
Pleated night shades  
Triple sealed slide outs  
Water heater by-pass  
16-gallon per hour quick recovery DSI water heater  
Ducted Dometic® 13,500 BTU central air conditioner w/ quick cool feature  
In-floor ducted heat w/ 35K BTU furnace  
Stain resistant carpet with padding  
Flush-floor hydraulic slide rooms with manual override (most models)  
Systems monitor panel  
6' 2" tall slide rooms  
Ultra lube axles  
Solid wood drawer fronts with ball bearing drawer guides  
2 outside speakers  
Beauflor® flooring

## KITCHEN

Extra large overhead cabinets  
Raised panel overhead cabinet doors  
16 cu. ft. residential refrigerator  
12-volt power range hood w/ light  
Microwave w/ carousel  
Designer metal kitchen back splash

Stainless 50/50 residential style kitchen sink  
Built in knife holder behind stove (some models)  
Thermoform countertops throughout  
3 burner Piezo ignition range oven  
High rise spring faucet at kitchen sink  
Kitchen waste basket  
Pantry with shelves

## LIVING ROOM

Lazy-Boy® recliners (per floorplan)  
Lazy-Boy® Hide-a-bed sofa  
DVD/CD/FM stereo w/ mp3 hook-up  
Cathedral ceiling w/ ceiling fan  
Surround sound w/ TV hook-up  
Digital TV antenna w/ booster  
Cable and satellite ready  
Extra large picture window at dinette  
Extra large dinette for more comfortable dining and sleeping  
Decorative lights in slide-out

## BEDROOM

Serta® Bradley mattress  
Designer residential bedspread with 5 pillows  
Lift-up beds w/ gas struts  
Cable TV hook-up  
Stain resistant carpet w/ padding  
Solid privacy doors

## BATHROOM

Built-in wood medicine cabinet and mirror  
Ceiling light w/ convenient wall switch  
Foot flush toilet(s)  
ABS tub or shower w/ one-piece surround

## EXTERIOR

Smooth fiberglass radius baggage doors w/ thumb pulls and holdbacks  
Cold crack and mildew resistant vinyl patio awning  
Patio door w/ screen  
Radius entry door  
15" radial tires (16" with optional fiberglass exterior)  
Entry assist handle  
2-30 lb. LP tanks w/ automatic change over & EZ access LP cover  
City water fill

## CONSTRUCTION

10" Extruded I-beam frame  
Cambered chassis  
Fresh water tank  
2" x 3" floor joists 12" on center  
5/8" 5-ply tongue and groove plywood floor decking  
2" wall studs maximum 16" on center  
5" bowed truss roof rafters  
3/8" walk-on roof decking

R-7 insulation  
Seamless one piece roof w/ 12 year warranty

## SECURITY & SAFETY

Smoke detector  
Fire extinguisher  
Carbon monoxide detector  
LP gas leak detector  
Amber porch light w/ interior switch  
Screen door w/ safety latch  
GFI receptacles and covered patio outlet  
Welded heavy duty safety chains  
Lockable fiberglass radius baggage doors  
Certified to meet all national highway traffic safety administration specs.

## WILDWOOD DLX OPTIONS

Gel coat fiberglass exterior  
10-gallon gas/electric DSI water heater  
Skylight over tub  
Outside kitchen (402QBQ only)  
Free standing dinette w/ 4 chairs  
Outside shower  
Detachable Hitch  
Solid Surface Kitchen Countertop  
LED colored awning light with remote  
LED interior lighting

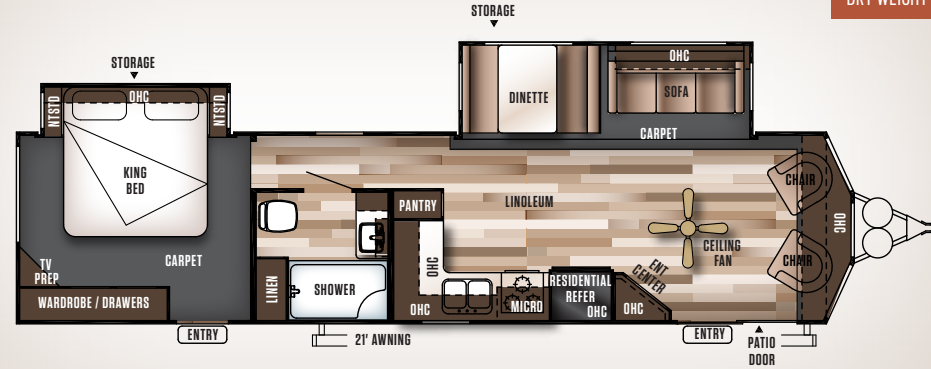
# WILDWOOD DLX

FLOORPLANS & SPECS

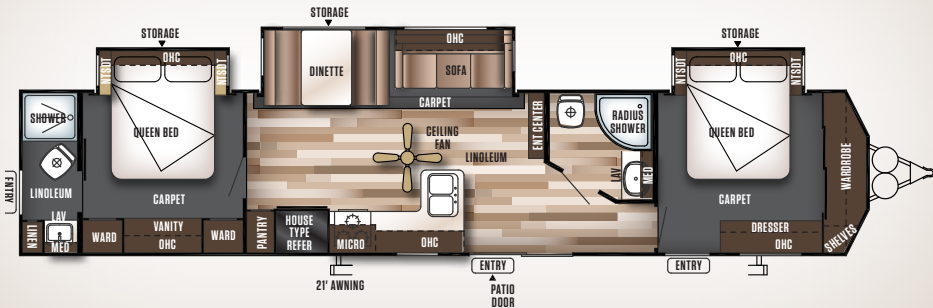


Model 39FDEN shown

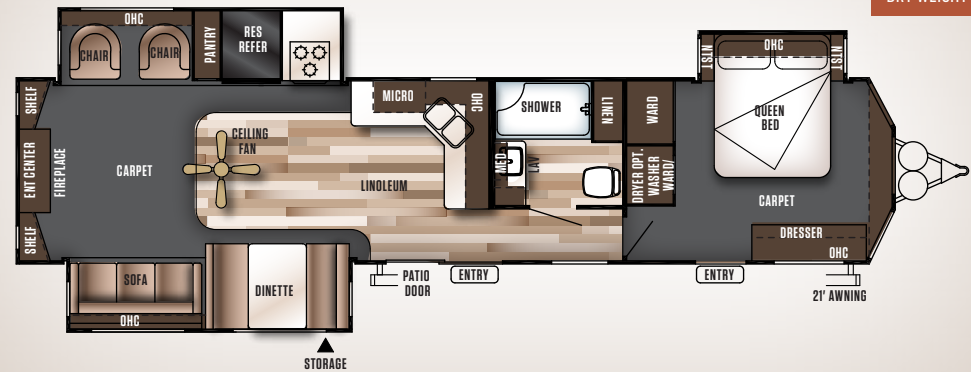
**353FLFB** 8,620 DRY WEIGHT



**400ZQ** 10,240 DRY WEIGHT



**400RETS** 10,060 DRY WEIGHT



## WILDWOOD DLX & LODGE FLOOR PLAN KEY

*Pillows and blankets shown on beds and bunks are for demonstration purposes only and do not come with your new coach.*

- OHC** OVERHEAD CABINET
- WARD** WARDROBE
- MICRO** MICROWAVE
- LAV** BATHROOM SINK

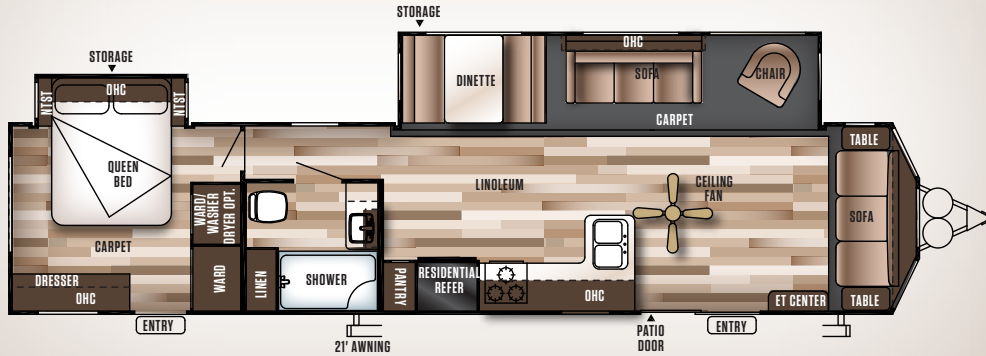
### DLX FLOORPLANS

### LODGE FLOORPLANS

	353FLFB	39FDEN	400RETS	400ZQ	402QBQ	426-2B	385FLBH	393RLT
HITCH WEIGHT (LBS.)	1290	1362	1375	1260	1075	1365	2148	1492
UNLOADED VEHICLE WEIGHT (LBS.)	8620	9725	10060	10240	10585	10175	10148	10660
CARGO CARRYING CAPACITY (LBS.)	2771	1738	1416	1121	2431	1291	3792	2773
EXTERIOR LENGTH	38'6"	41'	40'10"	43'6"	40'8"	40'5"	38'6"	40'11"
EXTERIOR HEIGHT	11'8"	11'11"	12'	12'3"	12'3"	12'3"	12'6"	12'9"
FRESH WATER CAPACITY (GAL.)	39	39	42	39	39	39	40	39
BLACK WATER CAPACITY (GAL.)	30	43	43	73	73	60	43	43
GREY WATER CAPACITY (GAL.)	40	43	43	86	86	86	86	86
AWNING SIZE (FT.)	21'	21'	15'	21'	20'	21'	21'	21'

39FDEN

9,775  
DRY WEIGHT



# WILDWOOD LODGE

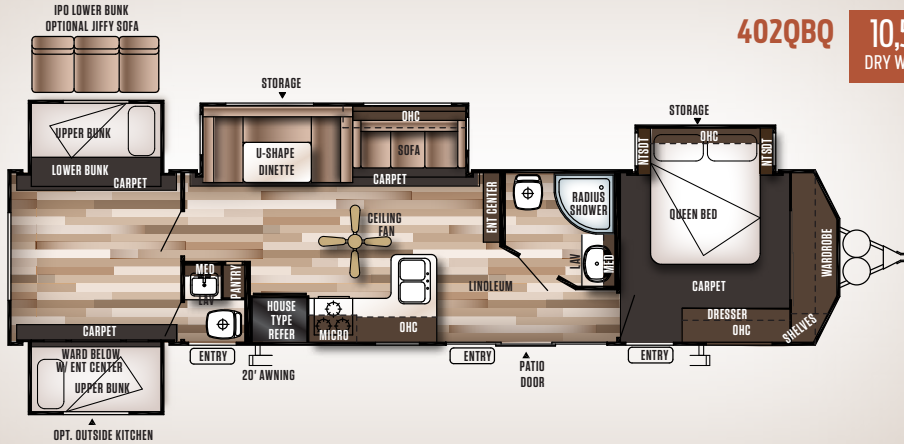
FLOORPLANS & SPECS



Model 4092BFL shown in optional fiberglass gel coat exterior

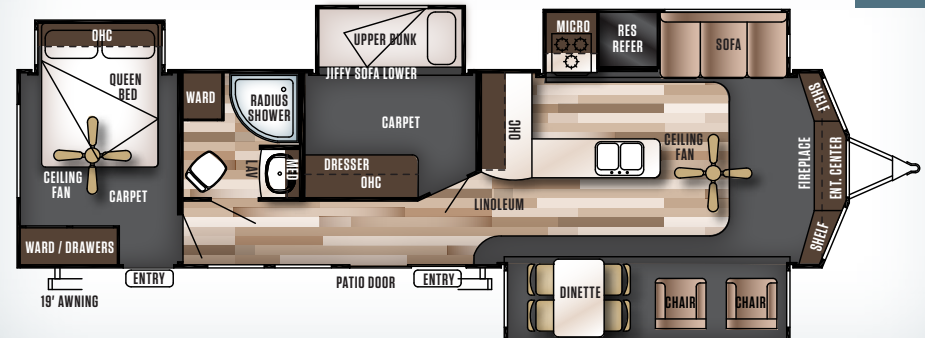
402QBQ

10,585  
DRY WEIGHT



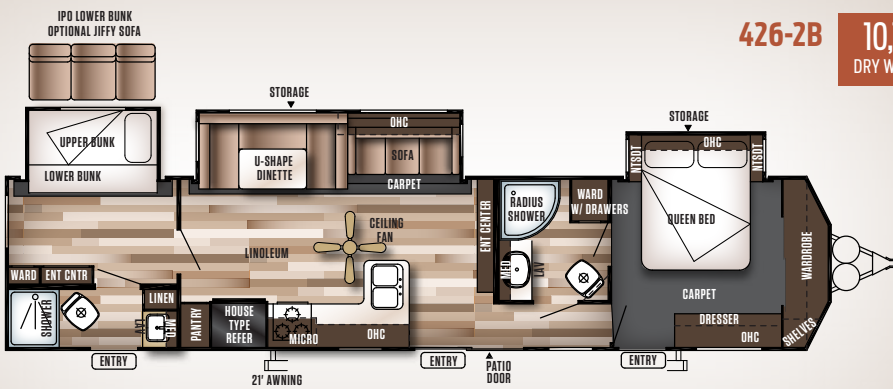
385FLFB

10,148  
DRY WEIGHT



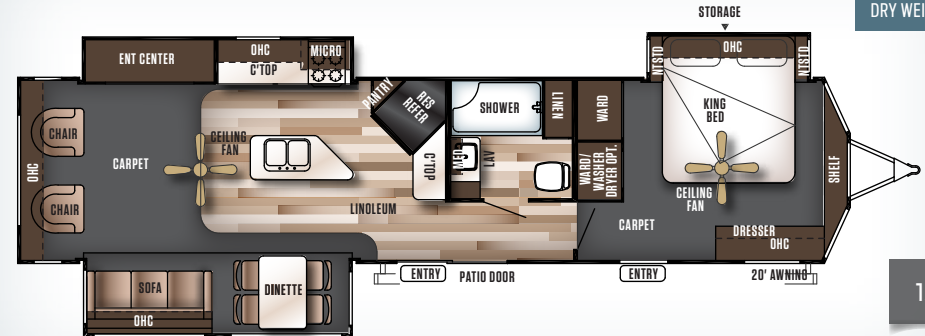
426-2B

10,175  
DRY WEIGHT

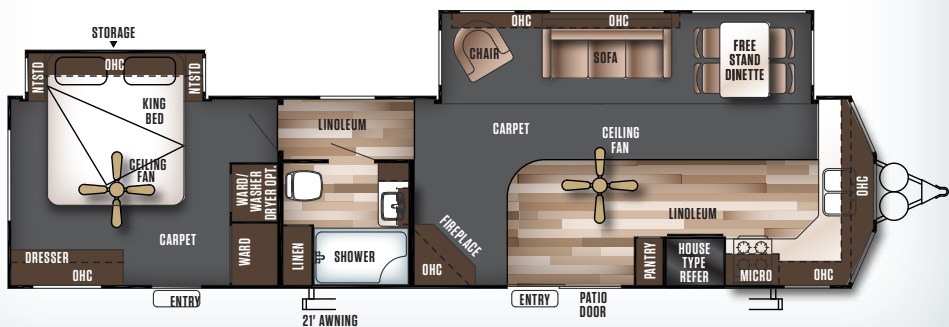


393RLT

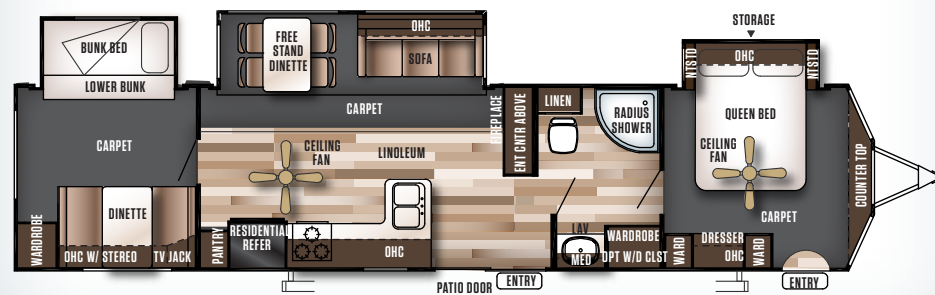
10,660  
DRY WEIGHT



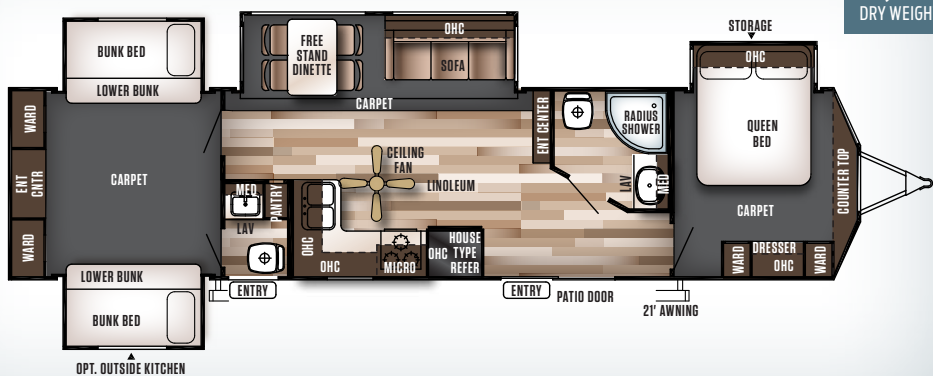
**394FKDS** 10,075  
DRY WEIGHT



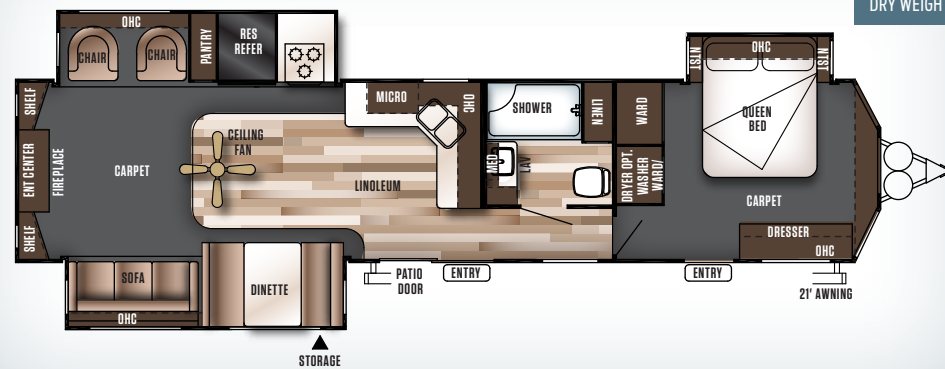
**404FB** 10,700  
DRY WEIGHT



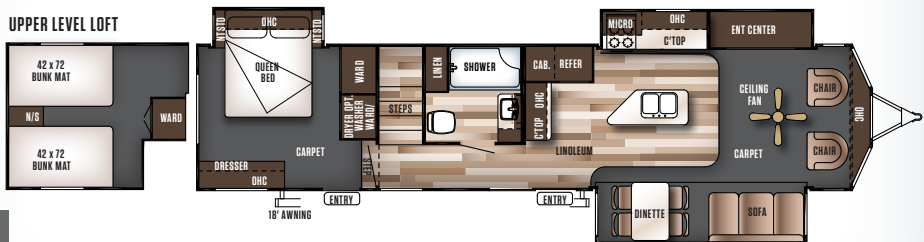
**404X4** 11,280  
DRY WEIGHT



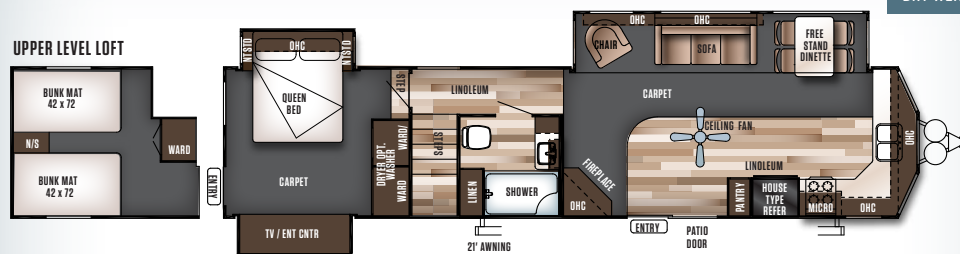
**407REDS** 10,260  
DRY WEIGHT



**4092BFL** 11,853  
DRY WEIGHT



**4102BFL** 11,848  
DRY WEIGHT



# WILDWOOD LODGE STANDARDS & OPTIONS

## COMFORT AND CONVENIENCE

- NEW 8 foot tall ceiling heights
- NEW 7 foot tall slide heights
- NEW ceiling fan in living room and bedroom (na in 4092 bedroom)
- NEW deluxe window package with tinted glass windows
- La-Z-Boy® recliners
- **Beaflor® plank wood linoleum**
- **102" exterior width for increased living space**
- Water heater by-pass
- Wired and braced for second A/C
- NEW 2" wood blinds in living room and kitchen
- **20-gallon electric water heater**
- Ducted Dometic® 15,000 BTU central air conditioner w/ quick cool feature
- In-floor ducted heat w/ 35K BTU furnace
- Flush-floor hydraulic slide rooms w/ manual override (most models)
- Systems monitor panel
- **Shaw stain resistant carpet with padding**
- **50 amp electrical service and 65 amp 12 volt converter**
- Solid hardwood drawer fronts

## KITCHEN

- **NEW (2) outlets in every kitchen**
- NEW skylight in every kitchen
- NEW brushed nickle hardware
- Designer metal kitchen back splash
- NEW high rise spring faucet
- NEW oversized 33" x 19" stainless steel under mount sink
- NEW stainless steel appliances
- Free standing dinette with 4 chairs

- **Extra large raised panel overhead cabinets**
- Full extension ball bearing drawer guides
- **20" free standing 4 burner gas range w/ oven**
- 16 cu. ft. residential electric refrigerator
- Microwave with carousel and range hood
- Pantry with shelves
- Thermoform countertops throughout

## LIVING ROOM

- **NEW Lazy-Boy® sofa hide-a-bed**
- **Lazy-Boy® recliners (per floorplan)**
- Surround sound TV hook-up
- DVD/CD/AM/FM stereo w/ mp3 hook-up
- 4 cube speakers
- **Winegard® TV antenna w/ booster**
- **Cable and satellite door side hookup**
- Glass sliding patio door w/ vertical blinds and screen door
- **Ceiling fan with wall switch**

## BEDROOM

- **NEW extra large dresser drawers**
- NEW shoe nook at foot of master bed
- NEW outlets at back-side of master-bed
- Serta® mattress
- Designer residential bedspread with 5 pillows
- **Ceiling fan w/ wall switch (na 4092BFL)**
- Comfort Flex (box spring) bed frame and base with storage (most models)
- Under bed storage (most models)
- Cable TV hook-up
- Solid privacy doors

## BATHROOM

- **NEW 50" walk-in shower with seat (most models)**
- Built-in wood medicine cabinet and mirror
- Ceiling light w/ convenient wall switch
- **Full extension ball bearing drawer guides**
- Foot flush toilet(s)
- **12" 10-blade Fantastic Bath Fan™**
- Toothbrush holder and towel ring

## EXTERIOR

- Upgraded graphics package
- NEW black exterior moldings
- NEW (2) 110v lights on front (some models)
- Smooth fiberglass radius baggage doors
- Cold crack and mildew resistant vinyl awning
- 15" radial tires (per floorplan)
- 30 lb. double LP tanks w/ automatic change over
- EZ access LP tank cover
- City water fill w/ brass valve
- **Swing out entry assist handle**
- **Two exterior speakers**
- **Triple sealed slideouts**

## CONSTRUCTION

- 12" forged I-beam frame
- Cambered chassis
- Seamless holding tanks
- Color coded water lines
- 2" x 3" floor joists 12" on center
- **5/8" 5-ply tongue and groove plywood floor decking**
- 2" wall studs maximum 16" on center
- 5" bowed truss roof rafters
- 3/8" walk-on roof decking

- **One-piece, seamless roof w/ 12 year warranty**

- Triple sealed slide outs
- R-7 insulation throughout (floors, walls, ceilings, and slide-outs)
- 102" exterior width for increased living space

## SECURITY AND SAFETY

- Smoke detector
- Fire extinguisher
- Carbon monoxide detector
- LP gas leak detector
- Door latch w/ integrated dead bolt lock
- Amber porch light w/ interior switch
- GFI receptacles and covered patio outlet
- Welded heavy duty safety chains
- Lockable fiberglass radius baggage doors
- ANSI 119.5
- Certified to meet all National Highway Traffic Safety Administration Specifications

## POPULAR OPTIONS

- NEW LED toe kick accent lighting
- True high gloss Gelcoat fiberglass exterior
- Skylight over tub
- LG® brand solid surface countertops
- LED colored awning light with remote
- LED interior lighting
- Central vacuum system
- Detachable hitch
- Outside shower
- 10-gallon gas/electric DSI water heater (IPO 20 gal electric)
- Extra insulation roof & floor

WILDWOOD LODGE

## FLOOR PLAN KEY

*Pillows and blankets shown on beds and bunks are for demonstration purposes only and do not come with your new coach.*

### OHC

OVERHEAD CABINET

### WARD

WARDROBE

### MICRO

MICROWAVE

### LAV

BATHROOM SINK

	394FKDS	404FB	404X4	407REDS	4092BFL	4102BFL
HITCH WEIGHT (LBS.)	1555	1385	1120	1330	1605	1241
UNLOADED VEHICLE WEIGHT (LBS.)	10075	10700	11280	10260	11853	11848
CARGO CARRYING CAPACITY (LBS.)	1581	2626	1781	3010	1693	1334
EXTERIOR LENGTH	40'10"	40'2"	41'0"	39'10"	42'	41'6"
EXTERIOR HEIGHT	12' 8"	12' 8"	10'9"	12'5"	13'5"	13'6"
FRESH WATER CAPACITY (GAL.)	39	39	50	39	40	40
BLACK WATER CAPACITY (GAL.)	30	30	73	43	43	43
GREY WATER CAPACITY (GAL.)	86	80	86	43	86	129
AWNING (FT.)	21'	21'	21'	18'	18'	21'



### PRE-DELIVERY INSPECTION FACILITY

20,000 square feet of quality assurance. The bare essentials for a premium product. This state-of-the-art facility gives immediate daily feedback to production for quality assurance in every unit built.



Forest River, Inc. encourages our customers to purchase their Forest River products from a local dealership whenever possible for the following reasons:

- 1) Forest River, Inc. dealers are independently owned and operated businesses so priority service and scheduling is at their discretion and is often provided to customers that purchased their unit at that dealership.
- 2) Purchasing locally allows customers to establish meaningful relationships with a dealer, enhancing the RV experience through assistance with product questions, user tips or RV regulations for your state or country, and much more!
- 3) Canadian customers must meet requirements to bring an RV purchased out of the country to their home. These requirements may involve additional inspections and certifications, taxes and fees. Your local Canadian Dealer is a professional at meeting these requirements.
- 4) Scheduling timely warranty repairs and adjustments through a local dealership provides far greater flexibility and convenience to you, the customer!

It is the goal of Forest River, Inc. that all of our RV owners fully enjoy the RV experience and that customer satisfaction meets or exceeds their expectations!

### 24/7 EMERGENCY ROADSIDE ASSISTANCE

For a worry-free ownership experience

Forest River includes one

year of Coach-Net RV Technical & Roadside

Assistance with each RV purchase. Whether

new to the RV lifestyle or an experienced RV enthusiast,

Forest River owners have 24/7 access to technical,

operational and emergency road service

coverage throughout the US & Canada.

Coach-Net's fast, dependable

service is just a phone

call away.

## Coach-Net®

RV Technical & Roadside Assistance

## THE WILDWOOD LINE-UP

# WILDWOOD



# WILDWOOD

*Luxe*



## Wildwood Heritage Glen



WILDWOOD

# DLX

WILDWOOD

# LODGE



**Learn More**  
Scan this barcode using a QR Reader on your smart phone to learn more about Forest River.



A Berkshire Hathaway company.

FOREST RIVER, INC. 55470 C.R. 1 ELKHART, IN 46515 | (574) 533-5934

WWW.FORESTRIVERINC.COM/WILDWOOD | WWW.FORESTRIVERACCESSORIES.COM

## FREE MEMBERSHIP

to Forest River Owners' Group

www.forestriverfrog.com



### Specification Definitions

**GVWR (Gross Vehicle Weight Rating)** - is the maximum permissible weight of the unit when fully loaded. It includes all weights, inclusive of all fluids, cargo, optional equipment and accessories. For safety and product performance do NOT exceed the GVWR.

**GAWR (Gross Axle Weight Rating)** - is the maximum permissible weight, including cargo, fluids, optional equipment and accessories that can be safely supported by a combination of all axles.

**UVW (Unloaded Vehicle Weight)\*** - is the typical weight of the unit as manufactured at the factory. It includes all weight at the unit's axle(s) and tongue or pin and LP Gas. The UVW does not include cargo, fresh potable water, additional optional equipment or dealer installed accessories.

\*Estimated average based on standard build optional equipment.

**CCC (Cargo Carrying Capacity)\*\*** - is the amount of weight available for fresh potable water, cargo, additional optional equipment and accessories. CCC is equal to GVWR minus UVW. Available CCC should accommodate fresh potable water (8.3 lbs per gallon). Before filling the fresh water tank, empty the black and gray tanks to provide for more cargo capacity.

\*\* Estimated average based on standard build optional equipment

Each Forest River RV is weighed at the manufacturing facility prior to shipping. A label identifying the unloaded vehicle weight of the actual unit and the cargo carrying capacity is applied to every Forest River RV prior to leaving our facilities.

The load capacity of your unit is designated by weight, not by volume, so you cannot necessarily use all available space when loading your unit.

All information contained in this brochure is believed to be accurate at the time of publication. However, during the model year, it may be necessary to make revisions and Forest River, Inc., reserves the right to make all such changes without notice, including prices, colors, materials, equipment and specifications as well as the addition of new models and the discontinuance of models shown in this brochure. Therefore, please consult with your Forest River dealer and confirm the existence of any materials, design or specifications that are material to your purchase decision. Litho. U.S.A P/W: 2014.09.17

YOUR WILDWOOD DEALER