

 **ITASCA.**



SUNCRUISER



THE TRUE SOURCE OF ITASCA.

On July 13, 1832, the Ojibwe Chieftain Ozawindib and mineralogist Henry R. Schoolcraft paddled their way to the headwaters of the Mississippi. Their journey led them to a tiny, gurgling stream flowing from a pristine, crystal clear lake — the source of the mighty Mississippi. In awe of the beauty before him, Schoolcraft named this area ITASCA, which is derived from the Latin phrase Veritas Caput, meaning "True Head" or "True Source". Itasca motor homes are named after Ozawindib and Schoolcraft's famous discovery, because, like Lake Itasca, Itasca motor homes are also the true source of many good things. A source of fun. Memories. Adventure. And family togetherness. You'll find the true source of all of this described on the following pages — a motor home featuring everything needed to make your own discoveries. If you'd like to find the true source of the Mississippi, follow U.S. Highway 71 to Minnesota 200. (Itasca State Park is located about 21 miles north of Park Rapids in Minnesota).



34RQ

INTRODUCING THE HIGH STORAGE MOTOR HOME WITHOUT THE HIGH PRICE.

The Itasca® Suncruiser® is the perfect vehicle to turn your dreams of owning a high storage Class-A motor home into reality. After all, no other comparably priced high storage Class-A motor home offers so many ingenious features and so much construction strength.

And now you can take advantage of the All-Season Value Package for a savings of \$2,520. With this special package, your motor home is equipped with an awning and a driver's door in addition to many other convenient options. See your dealer for details.

How is it possible to offer so much for so little? Simple — our factory is the most advanced and efficient in the industry, allowing for the unparalleled construction strength you'll find underneath Suncruiser's graceful exterior. This intelligent design, combined with more than 35 years of experience in the industry, gives the Suncruiser unmatched performance, durability and resale value. And Itasca looks after you long after you've left the dealer lot, with one of the strongest warranties and care packages in the industry.

Test drive the new Suncruiser. You'll find it has the beauty, comfort and storage space you've been looking for. And the price you've been dreaming about.



Exciting new graphics compliment the exterior's innovative and aerodynamic styling. No wonder Suncruiser turns so many heads.

Itasca's Thermo-Panel® construction of the one-piece sidewalls and backwall provides a neat insulation sandwich with no exposed rivets or seams. And it's backed by an exclusive ten year limited warranty.





Our diesel pusher model provides longer driving range and increased power.

Suncruiser features an abundance of tinted windows to ensure privacy and significantly cool the interior. Suncruiser's large, wraparound windshield features a wide tinted shade band for added protection from the sun.



Good-bye transistor radio. Our entertainment center's specially designed waterproof, locking compartment includes an AM/FM cassette stereo, speakers, outlets and TV connections.



Don't leave anything behind. Large, locking pass-through storage bay allows for easy storage of virtually anything you'll want to bring with you.

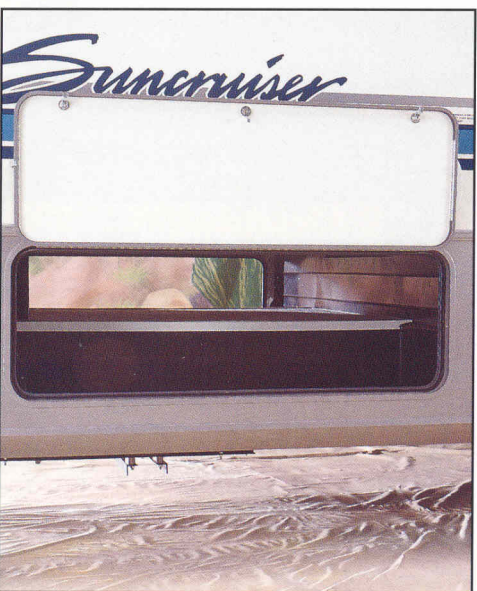
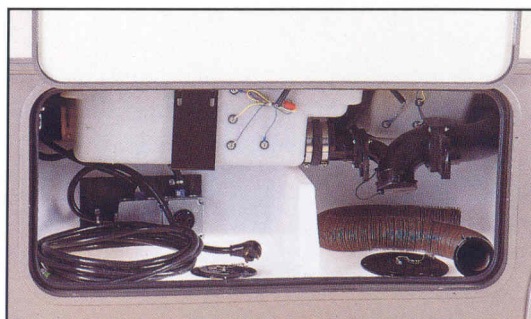
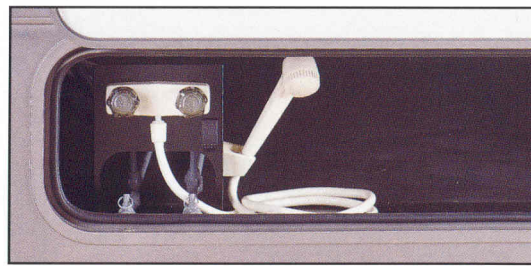


Suncruiser's easy access entrance door includes an automatically lowering entrance step.

Now you know why we offer options like a handy exterior shower with its own water pump switch.



The holding tank is mounted in steel and features a durable vinyl flooring.





34RA

WE'RE VERY RIGID ABOUT FLEXIBILITY.

If there's one thing we're very firm on at Itasca, it's your flexibility. This is evident throughout SunCruiser's spacious interior. A choice of four distinctive interior decors, and a number of options give you the ability to customize the interior to fit your needs. And SunCruiser's six different floorplans give travelers even more choices. For instance, our popular 34RA floorplan features a special side-aisle

configuration for increased bedroom privacy and a convenient bedroom entrance to the bath.

But no matter which layout and decor you choose, you'll appreciate the innovative thinking that goes into each and every SunCruiser interior. Hand-crafted furniture, beautiful cabinetry, well-placed lighting and an abundance of picture windows give SunCruiser a naturally open, airy feeling. The 1994 SunCruiser; comfortable, flexible and extremely livable. Get ready to fall in love.

Our engineers designed SunCruiser using a revolutionary RV development process called "Home Comfort Design". This unique approach to motor homes results in an extremely comfortable and efficient interior.

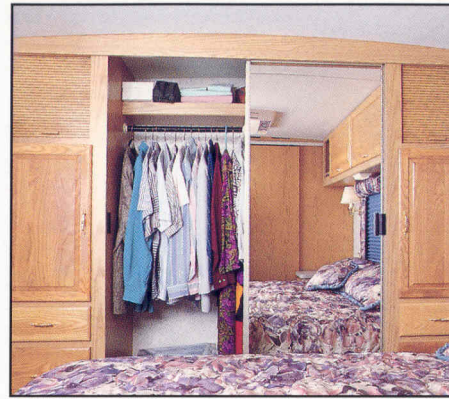


Beautiful hand-crafted wood-doored cabinets throughout the SunCruiser nicely complement the decor and add plenty of functional storage space.

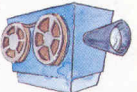




34RO



Instrument panel switches shouldn't be any harder to operate than this. Sun Cruiser's cab area incorporates large, easy-to-use rocker switch controls right at the driver's fingertips.

Watch all your favorites on Sun Cruiser's optional color TV & VCR with remote. The TV  enhancement package is standard giving you improved reception when you're camping off the beaten track.


The spacious wardrobe shelves and two clothes rod positions ensure plenty of room for neatly hanging clothing.



There's definitely no roughing it in the 1994 Sun Cruiser. The bathroom offers both elegant design and efficient use of space.

Includes a single-piece shower with flexible shower head and glass doors on the 29RQ and 37RW, marine toilet with sprayer, mirrored medicine cabinet, makeup lights and a large sink and countertop.

While most manufacturers rely on weaker fiberglass support structures, Sun Cruiser's wraparound windshield is mounted in steel with automotive adhesive — the strongest and safest method possible.

 From the kitchen to the overhead cabinets, we have designed everything in the Sun Cruiser to be easy to reach.

Sun Cruiser's kitchen is perfect for a complete dinner or a midnight snack. Standard features include a four burner range with oven, microwave, and large double-door refrigerator/freezer.



34RQ



Unfortunately, kids have the tendency to spill. Fortunately, all our carpet and fabrics are treated with Scotchgard™ Protector — so you can spend more time enjoying your trip and less time worrying about spills.

A FRIENDLY INVITATION.

Our engineers have gone to great lengths to make the new Suncruiser as inviting as possible. Every feature has been carefully designed to make your travels a little easier.

The rear bedroom features an island queen bed complimented by coordinated bedspread, pillow shams and window accents. Like the rest of the

interior, the bedroom includes plenty of easily accessible storage space.

From the driver's area up front to the bedroom in back, you'll find that every last inch of the new Suncruiser has been carefully designed to offer the utmost in comfort and convenience. Here's your invitation to unparalleled luxury and livability: R.S.V.P. at your Itasca dealer soon.

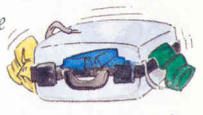
The overhead cabinets are accented with stunning brass trim for a rich and luxurious look.

These abundant storage spaces allow you to bring the comforts of home with you, where ever you go.





The roomy bedroom nightstands and overhead cabinets feature abundant storage space for your clothes. These well planned storage areas make packing for those long trips a lot less complicated.



A wide variety of bedroom layouts is available, and some models include a choice of queen or two twin beds.

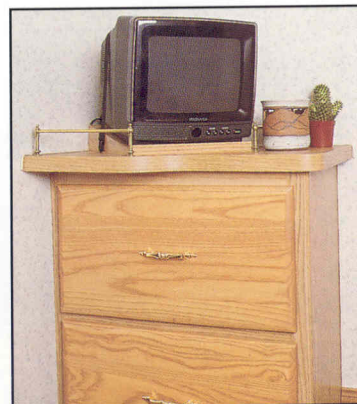


Special gas springs allow the bed to be lifted with no effort at all. Large underbed storage area is perfect for blankets, linens, extra towels, etc. This storage area is not available on the 34RO pusher.

A 9" color TV with remote control is a popular bedroom option. Perfect if you just want to kick back, relax and enjoy a good movie or show. But, if you want to spruce up and hit the town, the Suncruiser offers a convenient mirror with make-up lights.



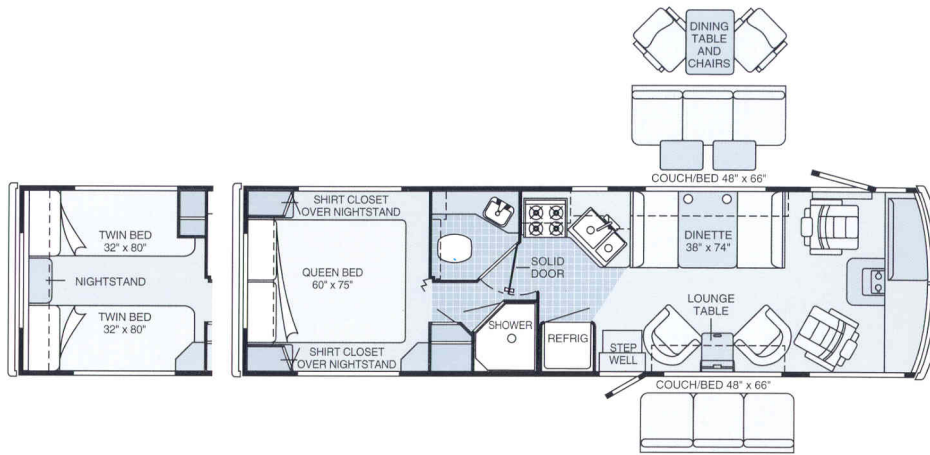
Thoughtful added touches are one reason the Suncruiser is so popular. Convenient reading lights are located on both sides of the bed on some models for late night reading.



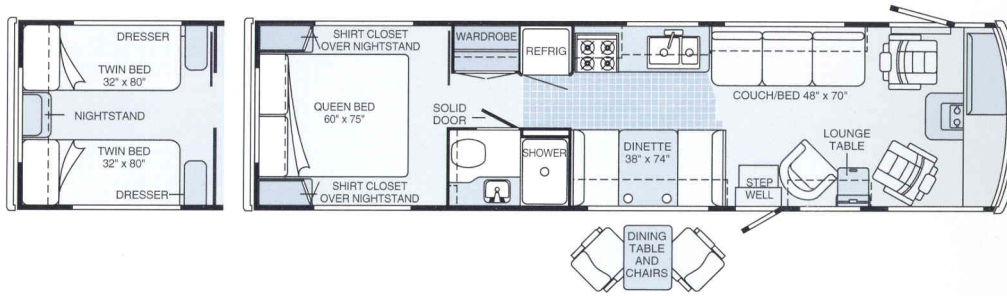
Suncruiser's comfortable Sealy® innerspring mattress makes for the perfect night's sleep.

SUNCRUISER

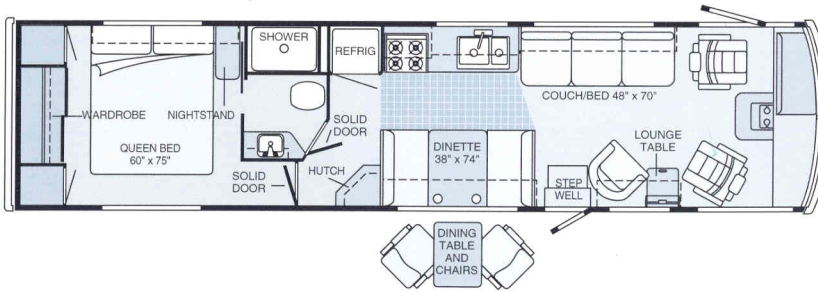
29RQ Unique angled kitchen puts everything within easy reach while increasing bedroom privacy. Features several different seating options in the front and choice of a queen bed or two twin beds in the rear bedroom.



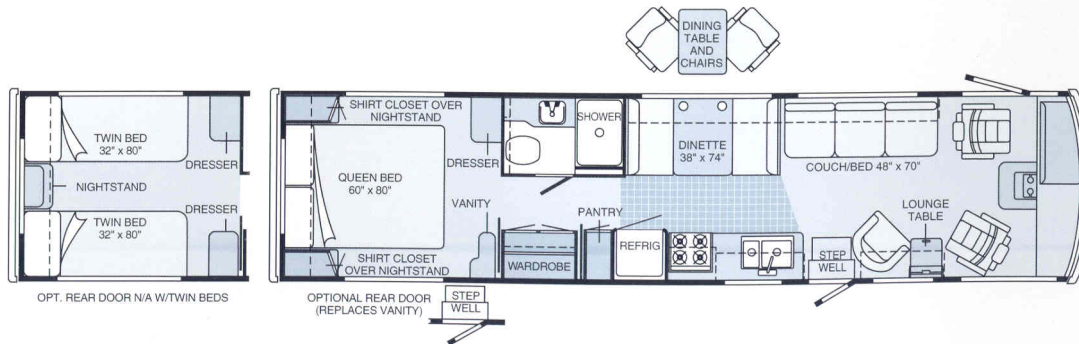
32RQ The 32RQ makes the most of every square inch. A large wardrobe is located right outside the bedroom. Spacious bathroom features a solid door. Kitchen includes either a comfortable dinette or dining table and chairs.



34RA Sideways placement of the queen bed and central placement of the bathroom provides the bedroom with increased privacy. Bedroom includes wardrobe, nightstand and separate entrance to the bathroom. Includes a handsome corner hutch.



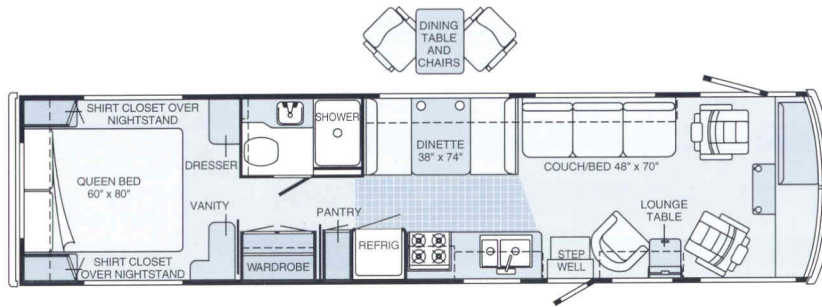
34RQ Bedroom includes dresser and choice of vanity or convenient rear door. Option of twin beds include two dressers. For extra storage, a large, solid door pantry is located in the kitchen. Full-size couch and comfortable lounge chair allow easy relaxing up-front.



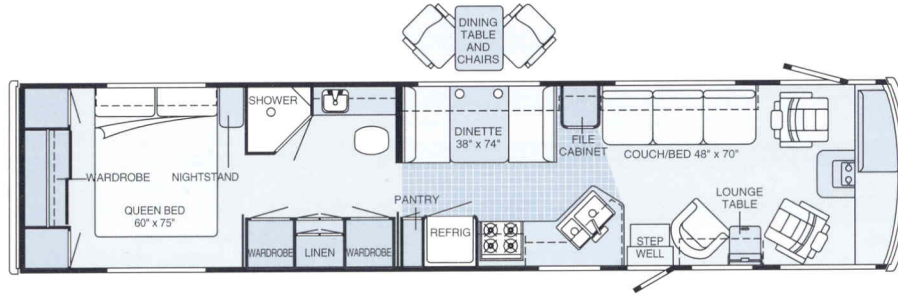
Dimensions shown are for sleeping space only and dashed lines denote overhead storage area. Patterned area indicates optional vinyl floor covering. Optional driver's door is shown.

SUNCRUISER

34RQ Pusher Rear diesel engine eliminates the need for a front engine compartment. This allows for increased driver and passenger legroom and easily accessible entry to the driving compartment. A large underfloor storage compartment and combination cabinet/beverage tray replace the engine cover.



37RW Our largest SunCruiser includes an angled kitchen design for added convenience. Kitchen area features pantry and large file cabinet. In addition to the large wardrobe located in the bedroom, two separate wardrobes and a large linen closet provide an abundance of storage space.



Extra-wide windshield shade band

Large full-sweep wipers securely mounted in steel

Porch and stepwell light with assist handle

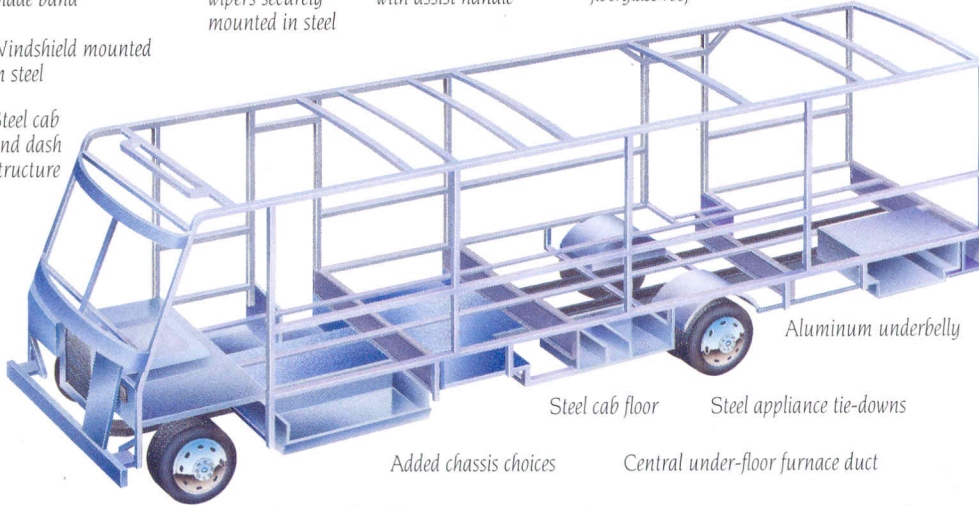
Crowned, single-piece fiberglass roof

Built-in awning rail

Full welded aluminum sidewall and roof structure

Windshield mounted in steel

Steel cab and dash structure



Interlocking roof/sidewall joint and sidewall/floor joint

Rust-free aluminum rear bumper

Standard class II hitch mounted directly to chassis

Standard radial tires, spare and wheel covers

Central electrical box under hood

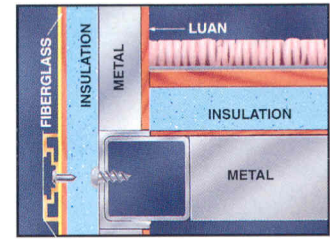
Steel beam reinforced bumper mounted directly to chassis

Large steel storage compartment

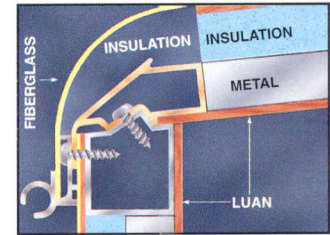
Exterior access furnace

Solid steel foundation welded to chassis

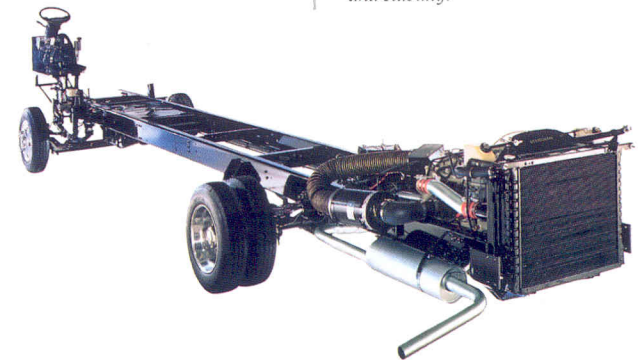
Large gas tank and overdrive transmission



The floor-to-wall joint utilizes a custom extrusion that locks the two pieces in place. This means the weight of the wall is supported by the joint, rather than by screws that simply attach the two pieces together.



The crowned fiberglass roof wraps over the joint into the sidewall for a smooth, attractive fit. Our exclusive locking joint system joins roof and sidewalls, providing maximum strength and stability.



The rear engine chassis with leaf-spring suspension provides a smooth, quiet, vibration-free ride and features a 5.9L turbo-charged, after-cooled Cummins® diesel for increased efficiency and lower operating costs, 77" front axle for maximum stability and maneuverability, and four-wheel power disc brakes with electric backup for superior braking performance. Allison AT-542 4-speed automatic transmission and 3.31:1 axle ratio (4.31:1 with the optional 230 horsepower model) enhance driving comfort and passing power, making towing a breeze - even on uphill grades.

1994 SUNCRUISER

	29RQ	32RQ	34RQ	34RA	37RW	34RQ Pusher
Length	29'10"	32'	34'	34'	37'4"	34'
Exterior Height w/Roof Air - Chevrolet	11'5"	11'7"	11'8.5"	11'9.5"	11'8.5"	NA
Exterior Height w/Roof Air - Ford	TBD	11'6"	11'8"	11'6"	11'10"	NA
Exterior Height w/Roof Air - Pusher	NA	NA	NA	NA	NA	11'7"
Exterior Width	8'	8'	8'	8'	8'	8'
Interior Height	6'8"	6'8"	6'8"	6'8"	6'8"	6'8"
Interior Width	7'7"	7'7"	7'7"	7'7"	7'7"	7'7"
Exterior Storage	TBD	88.8 cu. ft.	106 cu. ft.	110 cu. ft.	102 cu. ft.	106 cu. ft.
Fuel Capacity - Chevrolet	78 gal.	78 gal.	78 gal.	78 gal.	78 gal.	NA
Fuel Capacity - Ford	75 gal.	75 gal.	75 gal.	75 gal.	75 gal.	NA
Fuel Capacity - Pusher	NA	NA	NA	NA	NA	90 gal.
Fresh Water Capacity w/Heater	106 gal.	106 gal.	106 gal.	106 gal.	106 gal.	92 gal.
Holding Tank Capacity	111 gal.	99 gal.	105 gal.	99 gal.	105 gal.	105 gal.
LP Capacity	60 lbs.	80 lbs.	100 lbs.	100 lbs.	100 lbs.	130 lbs.
GVWR - Chevrolet	14,800 lbs.	16,000 lbs.	16,000 lbs.	16,000 lbs.	18,000 lbs.	NA
GVWR - Ford	15,200 lbs.	17,000 lbs.	17,000 lbs.	17,000 lbs.	19,000 lbs.	NA
GVWR - Pusher	NA	NA	NA	NA	NA	18,340 lbs.
GVWR - Pusher (Optional)	NA	NA	NA	NA	NA	19,840 lbs.
Wheelbase	178"	208"	228"	228"	228" + Tag	228"

AUTOMOTIVE

	29RQ	32RQ	34RQ	34RA	37RW	34RQ P
Chassis - Chevrolet	◆	◆	◆	◆	◆	◆
7.4L 454 V-8 Fuel-Injected Gasoline Engine, Automatic Transmission w/Overdrive & Cooler, Front Suspension: Independent, Coil Spring w/Aux. Air Springs, Rear Suspension: Leaf Spring, 630-CCA Battery/105-Amp. Alternator						
Chassis - Chevrolet	◆					
6.5L Turbo Diesel Engine, Automatic Transmission w/Overdrive & Cooler, Front Suspension: Gas, Rear Suspension: Leaf Spring, 630-CCA Battery/105-Amp. Alternator, Available Spring 1994						
Chassis - Ford	◆	◆	◆	◆	◆	◆
7.5L 460 V-8 Fuel-Injected Gasoline Engine, Automatic Transmission w/Overdrive & Cooler, Front Suspension: Mono-Beam Axle w/Leaf Spring, Rear Suspension: Multi-Leaf Spring, 650-CCA Battery/130-Amp. Alternator						
Chassis - Oshkosh	◆					
5.9L 190 H.P. Turbo-Charged/After-Cooled Cummins Diesel Engine, Automatic Transmission w/Overdrive & Cooler, I-Beam w/Leaf Spring Front Suspension, Leaf Spring Rear Suspension, 923-CCA Battery/100-Amp. Alternator						
Chassis - Oshkosh	◆					
5.9L 230 H.P. Turbo-Charged/After-Cooled Cummins Diesel Engine, Automatic Transmission w/Overdrive & Cooler, I-Beam w/Leaf Spring Front Suspension, Leaf Spring Rear Suspension, 923-CCA Battery/100-Amp. Alternator						
Shocks (Gas) Front, Chevrolet	◆	◆	◆	◆	◆	◆
Suspension (Air) Tag Axle						◆
Tires (Radial) w/Spare	◆	◆	◆	◆	◆	◆
DRIVER CONVENIENCES	29RQ	32RQ	34RQ	34RA	37RW	34RQ P
12-V Electrical Supply/Lighter	◆	◆	◆	◆	◆	◆
Battery Charge Control Dual, Automatic	◆	◆	◆	◆	◆	◆
Battery Disconnect Auxiliary	◆	◆	◆	◆	◆	◆
Cabinet Center Console						◆
Convenience Tray	◆	◆	◆	◆	◆	◆
Curtain w/Track Front Wrap-Around	◆	◆	◆	◆	◆	◆
Cruise Control	◆	◆	◆	◆	◆	◆

DRIVER CONVENIENCES (cont.)

	29RQ	32RQ	34RQ	34RA	37RW	34RQ P
Defroster Auxiliary 2-Speed	◆	◆	◆	◆	◆	◆
Driver's Door	◆	◆	◆	◆	◆	◆
Heating/Air Conditioning Automotive Blend Air System	◆	◆	◆	◆	◆	◆
Hood Release Exterior Key Locks	◆	◆	◆	◆	◆	◆
Map Light	◆	◆	◆	◆	◆	◆
Mirrors (Rear View) Low Mounted	◆	◆	◆	◆	◆	◆
Mirrors (Rear View) Low Mounted, Include Convex Element	◆	◆	◆	◆	◆	◆
Rear View Monitor System Video/Audio	◆	◆	◆	◆	◆	◆
Seats w/3-Point Retracting Seat Belts Reclining High-Back Design, Hinged Armrests, Lumbar Support, Swivel/Slide Pedestal	◆	◆	◆	◆	◆	◆
Service Light Driver's Side	◆	◆	◆	◆	◆	◆
Start Circuit Auxiliary	◆	◆	◆	◆	◆	◆
Steering Power Assisted w/Tilt Wheel	◆	◆	◆	◆	◆	◆
Storage Cabinet (Front Overhead)	◆	◆	◆	◆	◆	◆
Sunvisors	◆	◆	◆	◆	◆	◆
Upgrade - Driver's Convenience Package Carpeted Floor Mats, Wall-Mount Map Pockets	◆	◆	◆	◆	◆	◆
Windows (Driver/Passenger) Sliding, w/Screens	◆	◆	◆	◆	◆	◆
Windshield Wipers (Intermittent)	◆	◆	◆	◆	◆	◆
ENTERTAINMENT	29RQ	32RQ	34RQ	34RA	37RW	34RQ P
Antenna (Radio) Roof-Mounted, Flexible Rubber	◆	◆	◆	◆	◆	◆
C.B. Prep Kit Antenna, Coax Wiring, 12-V Power Connection	◆	◆	◆	◆	◆	◆
Entertainment Center (Patio) AM/FM Radio, Cassette Deck, Speakers (2), DC Receptacle, 110-V Outlet, TV Jack, Radio Antenna, TV Table, Locking Door	◆	◆	◆	◆	◆	◆

ENTERTAINMENT (cont.)

	29RQ	32RQ	34RQ	34RA	37RW	34RQ P
Inverter 110-V for TV/VCR	◆	◆	◆	◆	◆	◆
Stereo Power Switch For Main or Auxiliary Battery Use	◆	◆	◆	◆	◆	◆
Stereo w/Digital Clock (Cab) Electronic Tune AM/FM Cassette Deck w/Seek, Speakers (4)	◆	◆	◆	◆	◆	◆
TV (13" Color) & VCR w/Remote Switching System, Cabinet Exchange	◆	◆	◆	◆	◆	◆
TV (13" Color) w/Remote	◆	◆	◆	◆	◆	◆
TV (9" Color) w/Remote Located in Bedroom	◆	◆	◆	◆	◆	◆
TV Enhancement Package Antenna (Amplified), DC Receptacles (2), Interior Jacks (2), Coax Wiring, Cable Input, Exterior Antenna Jack, TV Shelf or Stand	◆	◆	◆	◆	◆	◆

INTERIOR

	29RQ	32RQ	34RQ	34RA	37RW	34RQ P
Cabinets Wood Doors	◆	◆	◆	◆	◆	◆
Carpeting w/Pad Stain Resistant w/Scotchgard™ Protector	◆	◆	◆	◆	◆	◆
Ceiling Padded Vinyl Headliner	◆	◆	◆	◆	◆	◆
Ceiling Lights	◆	◆	◆	◆	◆	◆
Ceiling Vent Powered, Bathroom	◆	◆	◆	◆	◆	◆
Ceiling Vent Powered Ventilator Fan, Galley	◆	◆	◆	◆	◆	◆
Ceiling Vents Non-Powered, Lounge, Galley & Bedroom	◆	◆	◆	◆	◆	◆
Clock Decorator Style	◆			◆	◆	
Color Themes (Interior) Choice of Oxford (Blue), Festival (Taupe/Green), Parchment (Tan), Woodland (Green)	◆	◆	◆	◆	◆	◆
Divider Folding Door	◆					
Divider Hinged Door				◆		
Divider Sliding Doors (2) 1 Door on 32RQ		◆	◆	◆	◆	◆
Lamp(s) Decorator Style, in Lounge		◆	◆	◆	◆	◆
Light (Aisle Courtesy) by Entrance Door	◆	◆	◆	◆	◆	◆
Mini-Blinds Galley & Bath	◆	◆	◆	◆	◆	◆
Washer/Dryer Combination						◆
Windows Tinted w/62% Light Transmittal	◆	◆	◆	◆	◆	◆
Windows Dual Glazed, Thermo-Insulated Available Fall 1993	◆	◆	◆	◆	◆	◆

GALLEY

	29RQ	32RQ	34RQ	34RA	37RW	34RQ P
Coffee Maker	◆	◆	◆	◆	◆	◆
Flooring (Vinyl)	◆	◆	◆	◆	◆	◆
Hutch						◆
Ice Maker						◆
Microwave Oven	◆	◆	◆	◆	◆	◆
Pantry			◆	◆	◆	◆
Picture Framed		◆	◆	◆	◆	◆
Range Hood w/Light, Powered Vent	◆	◆	◆	◆	◆	◆
Range w/Large Glass-Doored Oven 4-Burners, Bi-Fold Range Cover	◆	◆	◆	◆	◆	◆
Refrigerator/Freezer Large, Double-Door, Flush Mounted	◆	◆	◆	◆	◆	◆
Sink (Double) Stainless Steel, Recessed w/Cover	◆	◆	◆	◆	◆	◆

GALLEY (cont.)	29RQ	32RQ	34RQ	34RA	37RW	34RQ P
Storage below Dinette Seats	◆	◆	◆	◆	◆	◆
Water Purification System	◆	◆	◆	◆	◆	◆
BEDROOM	29RQ	32RQ	34RQ	34RA	37RW	34RQ P
Bedsprad(s), Pillows,	◆	◆	◆	◆	◆	◆
Pillow Shams, Throw Pillow						
Lamps Decorator Style, Wall-Mounted	◆	◆	◆	◆	◆	◆
Mattress(es)	◆	◆	◆	◆	◆	◆
Sealy® Innerspring w/Non-Slip Mat, Access to Storage below, Gas Springs. No Underbed Storage on 34RQ Pusher						
TV Shelf	◆	◆	◆			◆
Also Available on 32RQ w/Twin Bed Option						
TV Stand				◆	◆	
Wardrobe	◆	◆	◆	◆	◆	◆
Mirrored Doors, Carpeted Floor, Light						
BATHROOM	29RQ	32RQ	34RQ	34RA	37RW	34RQ P
Lavatory Cabinet	◆	◆	◆	◆	◆	◆
Linen Cabinet	◆	◆	◆			◆
Makeup Lights (3)	◆	◆	◆	◆		◆
Makeup Lights (4)					◆	
Medicine Cabinet			◆			
2 Mirrored Doors on 37RW, 1 Mirrored Door on 34RA						
Medicine Cabinet Wood Doors	◆	◆	◆			◆
Mirror Wall-Mounted	◆	◆	◆			◆
Shower & Tub	◆	◆	◆	◆	◆	◆
Flexible Shower Head, Molded Single-Piece Walls						
Shower Curtain w/Rod		◆	◆	◆		◆
Shower Door (Solid Glass)	◆				◆	
Sink Rectangular, Molded Soap Dishes	◆	◆	◆	◆	◆	◆
Tissue Holder Surface Mount	◆	◆	◆	◆	◆	◆
Toilet w/Sprayer Marine Style	◆	◆	◆	◆	◆	◆
Towel Bar					◆	
Towel Rack (4)	◆	◆	◆	◆	◆	◆
Towel Ring	◆	◆	◆	◆	◆	◆
EXTERIOR	29RQ	32RQ	34RQ	34RA	37RW	34RQ P
Awning Rail	◆	◆	◆	◆	◆	◆
Awning (Acrylic)	◆	◆	◆	◆	◆	◆
w/Center Rafters & Cradle on 34RQ w/Rear Entrance Door						
Bumpers Rustproof, Front: Steel	◆	◆	◆	◆	◆	◆
Reinforced Molded Plastic, Rear: Formed Aluminum w/End Caps						

EXTERIOR (cont.)	29RQ	32RQ	34RQ	34RA	37RW	34RQ P
Entrance Door*						◆
Rear, w/Screen Door & Window						
Entrance Door Locks (2)	◆	◆	◆	◆	◆	◆
Latch, Deadbolt						
Entrance Door Steps (Electric)	◆	◆	◆	◆	◆	◆
w/Door Latch Switch						
Entrance Door w/Screen Door	◆	◆	◆	◆	◆	◆
Graphics	◆	◆	◆	◆	◆	◆
Holding Tanks (Heated Compartment)	◆	◆	◆	◆	◆	◆
Luggage Rack & Ladder	◆	◆	◆	◆	◆	◆
Mud Flaps Rear	◆	◆	◆	◆	◆	◆
Outlet 110-V, Curbside	◆	◆	◆	◆	◆	◆
Porch Light Interior Switch	◆	◆	◆	◆	◆	◆
Power Cord Storage Compartment	◆	◆	◆	◆	◆	◆
Sewer Hose & Storage Compartment	◆	◆	◆	◆	◆	◆
Shower Pull-out w/Water Pump Switch	◆	◆	◆	◆	◆	◆
Storage Compartments	◆	◆	◆	◆	◆	◆
Floor Lining, Locks, Hold-Ups, Lights, Steel Construction						
Tire Tools	◆	◆	◆	◆	◆	◆
Wrench, Leverage Bar, Tire Hoist Rod on 34RQ Pusher						
Trailer Towing Package	◆	◆	◆	◆	◆	◆
w/Class II Hitch						
Trailer Wiring Extension	◆	◆	◆	◆	◆	◆
Undercoating	◆	◆	◆	◆	◆	◆
Water Fill Door Lockable	◆	◆	◆	◆	◆	◆
Water Tank Drain	◆	◆	◆	◆	◆	◆
Wheel Covers	◆	◆	◆	◆	◆	◆
Wheel Liners Stainless Steel	◆	◆	◆	◆	◆	◆

SYSTEMS	29RQ	32RQ	34RQ	34RA	37RW	34RQ P
Air Conditioning Pre-Wiring Roof	◆	◆	◆	◆	◆	◆
Air Conditioner Roof, 13,500-BTU	◆	◆	◆	◆	◆	◆
Air Conditioners*	◆	◆	◆	◆	◆	◆
Roof, Front/Rear: 13,500/11,000-BTU						
Air Conditioners*		◆	◆	◆	◆	◆
Roof, Front/Rear: 13,500/13,500-BTU						
Air Conditioners*						◆
Roof, Low-Profile, Front/Rear: 13,500/13,500-BTU						
Batteries (2)	◆	◆	◆	◆	◆	◆
Deep Cycle RV, in Stepwell Compartment						
City Water Hook-Up	◆	◆	◆	◆	◆	◆

SYSTEMS (cont.)	29RQ	32RQ	34RQ	34RA	37RW	34RQ P
Electrical Control Center	◆	◆	◆	◆	◆	◆
110-V AC/12-V DC, 9-Amp. Battery Charger, 45-Amp. Converter, DC Automotive Fuses, AC Circuit Breakers, 30-Amp. Power Cord						
Furnace	◆	◆				
Ducted, Low Profile, Electronic Ignition, 35,000-BTU						
Furnace			◆	◆	◆	◆
Ducted, Low Profile, Electronic Ignition, 40,000-BTU						
Furnace Ducting System	◆	◆	◆	◆	◆	◆
Rigid, below Floor						
Generator Prep Kit	◆	◆	◆	◆	◆	◆
Gas Line (NA on 34RQ Pusher), 12-V Wiring						
Generator* 4,000, 5,000 or 6,500-Watt, Gas	◆	◆	◆	◆	◆	◆
Generator* 6,500-Watt, LP						◆
Leveling System by HWH®	◆	◆	◆	◆	◆	◆
4-Point, Manual Controls						
LP Tank Permanent Mount w/Gauge	◆	◆	◆	◆	◆	◆
Monitor Panel	◆	◆	◆	◆	◆	◆
Water, Holding & LP Tank Levels, Battery Condition Gauge, Water Heater Ignition Switch w/Pilot Indicator Light, Water Pump Switch, Located in Galley						
Water Heater 6-Gal., Electronic Ignition	◆	◆	◆	◆	◆	◆
Water Heater (Motoraid) & Rear Automotive Heater	◆	◆	◆	◆	◆	◆
Water Heater Winterization By-Pass Valve	◆	◆	◆	◆	◆	◆
Water Pump (Demand) 3 Switches	◆	◆	◆	◆	◆	◆
SAFETY	29RQ	32RQ	34RQ	34RA	37RW	34RQ P
Assist Handle Interior	◆	◆	◆	◆	◆	◆
Assist Handle Exterior	◆	◆	◆	◆	◆	◆
Assist Strap Interior	◆	◆	◆	◆	◆	◆
Carbon Monoxide Detector/Alarm	◆	◆	◆	◆	◆	◆
Fire Extinguisher (10-B.C.)	◆	◆	◆	◆	◆	◆
Ground Fault Interrupter	◆	◆	◆	◆	◆	◆
LP Leak Detector/Alarm	◆	◆	◆	◆	◆	◆
Smoke Detector/Alarm	◆	◆	◆	◆	◆	◆

Standard ◆ Optional ◇

*Not all options available in combinations. See dealer for details.

Winnebago Industries' continuing program of product improvement makes specifications, equipment, model availability and prices subject to change without notice.

1994 SUNCRUISER INTERIORS

Itasca's custom interior decors feature elegant, Scotchgard™ protected fabrics for a unique, comfortable feel that's as welcoming as it is long lasting. Careful attention has assured the carpet, window dressings and upholstery work together creating a unified look.



Oxford



Accent



Carpet



Festival



Accent



Carpet



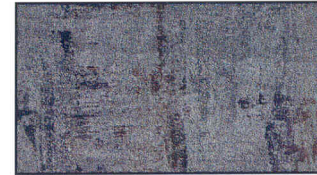
Parchment



Accent



Carpet



Woodland



Accent



Carpet

THE INDUSTRY LEADER FOR MORE THAN THIRTY YEARS.

More than 35 years ago the first travel trailer rolled out of Winnebago Industries' factory. Eight years later, the Winnebago Brave made its debut and changed travel



forever. Naturally, we're very proud of our heritage, and we're just as proud of our industry leading technology and the countless motor home innovations and improvements that have made Winnebago Industries the clear leader in motor homes.

THE MOST ADVANCED RV FACTORY IN THE WORLD.

Welcome to Forest City, Iowa, home of the largest and most advanced RV production facility in the industry. Winnebago Industries' motor homes are designed here using the latest in Computer Aided Design technology.

Unlike other manufacturers who utilize many off-the-shelf items, the majority of components used in Winnebago Industries' motor homes are manufactured in-house.



Products manufactured on site include: most welded steel cabs and coach floor support structures, furniture, cabinetry, holding tanks, windows and our exclusive Thermo-Panel® sandwich wall and roof structure.

In addition to the production facilities, a state-of-the-art testing site and torturous test track ensure the quality, fit and finish of each model.

Free tours of the Winnebago Industries factory are available year round. Please call (515) 582-3535 for more tour information.

WE'LL TRAVEL WITH YOU.

To ensure your safety and well-being on the road, a one year membership in the Winnebago Industries Preferred Care



Program is included with most new Itasca. This special program provides service assistance through a toll-free phone network, anywhere in the U.S. and Canada. The Preferred Care Program's number is staffed 24 hours-a-day, 365 days-a-year by experienced service professionals. Services include dispatching emergency road service and towing, answering service questions, and providing access to over 20,000 prequalified service locations. After the first year, the Preferred Care Program can be extended through membership in the Winnebago-Itasca Travelers (WIT) Club.

AN AMAZING MOTOR HOME WITH AN INCREDIBLE WARRANTY.

Itasca motor homes are covered by the most comprehensive warranty in the industry. The standard warranty protects your Itasca for 12 months or 15,000 miles. Following the expiration of the standard warranty, extended coverage on structural components continues to 36 months/36,000 miles from purchase date, whichever comes first. Roof and sidewall surface materials feature 10 year limited warranty coverage for the original owner, and the 100% stain-free carpeting carries an extensive package of fade, stain and wear coverage. See your Itasca dealer for more information on this complete warranty package.



SAFETY FIRST.

Winnebago Industries leads the motor home industry in more than technology and innovation. We're also a leader in safety. In fact, Itasca motor homes are loaded with safety features you won't find on many other motor homes. Features like 3-point safety belts on most models, a solid steel foundation welded to the chassis for incredible strength, our steel cab, dash and floor substructure, and the windshield mounted in steel with a special adhesive, (many competitors' windshields are mounted in weaker fiberglass).



WINNEBAGO-ITASCA TRAVELERS AND YOU.

Every Itasca owner is invited to join the Winnebago-Itasca Travelers (WIT) Club. As a WIT member, you can take advantage of special services like professional trip routing and mail forwarding and you'll receive the WIT Club News magazine. For more information on the WIT Club, see your Itasca dealer or call (515) 582-6874.

For Sales and Service Information Contact:

