



1996 JAYCO

# EAGLE SL™

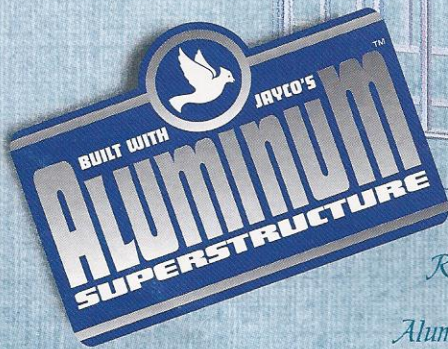
TRAVEL TRAILERS  
& FIFTH WHEELS



*1" x 1" Tubular  
Aluminum Frame*

*4" Roof Truss*

*Mig-Welded  
Joints*



*Reinforced  
1-1/2"  
Aluminum Tubing*



**YOU'LL LOVE THIS PLACE!**



Eagle 234 SL  
Travel Trailer,  
Teal Decor

# A SERIOUS ADVANCE IN RV FUN!

Eagle SL™ travel trailers and fifth wheels are the first *value-priced* RVs to offer an advanced aluminum-frame superstructure. And that's just the first of their many innovations; innovations that make for super dependability — and an extra measure of pleasure for you and your family!

The aluminum frame, strong yet lightweight, makes Eagle SL perfect for towing behind today's lighter, more fuel-efficient vehicles. Lengths under 25 feet help in this regard, too. And talk about peace of mind: Every frame joint is solidly welded;

the all-aluminum roof has a three-inch arch and aluminum trusses for added strength where it counts; and sturdy aluminum framing surrounds all doors and windows.

Eagle SL is equally strong on comfort. Treat yourself to its inviting, permanent sleeping accommodations... its relaxing lounge and dining area... its complete kitchen, where

delicious, home-cooked meals become a reality... and its bathroom, with all the amenities you want when you travel. Savor as well its tasteful, contemporary decor. And take note of all its practical, comfort-enhancing features.

You'll be amazed we offer so much — especially at a price that's not just affordable, but downright *amazingly low!*

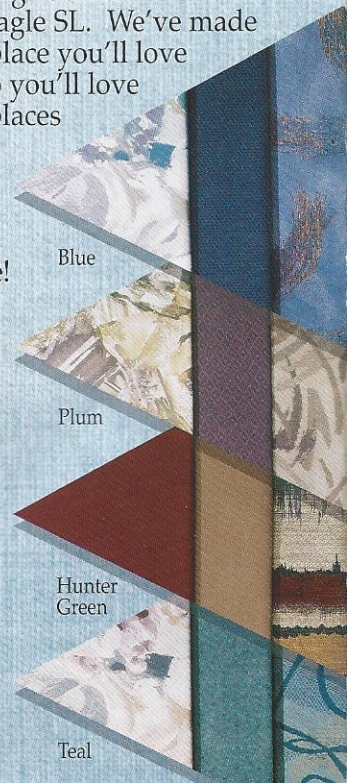
How do we do it? By bringing every bit of our 27 years of experience to bear on cutting costs without cutting corners.

Eagle SL. We've made it a place you'll love — so you'll love the places you take it even more!



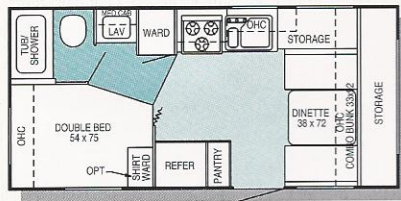
Right: Eagle 207 SL Fifth Wheel,  
Hunter Green Decor

Far right: Spacious Eagle SL bathrooms  
come with a shower tub

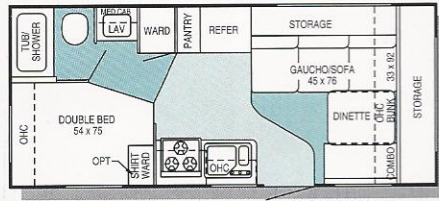


# YOU'LL LOVE THESE FLOOR PLANS!

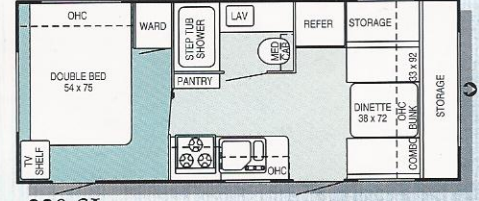
## Eagle SL™ Travel Trailers



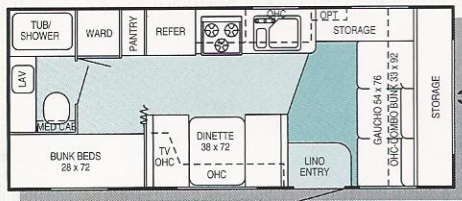
210 SL OPTION A



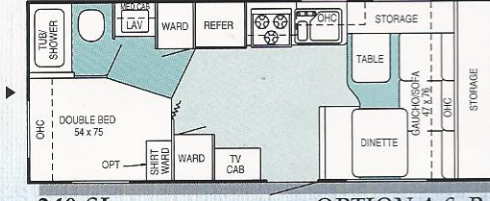
220 SL OPTION A



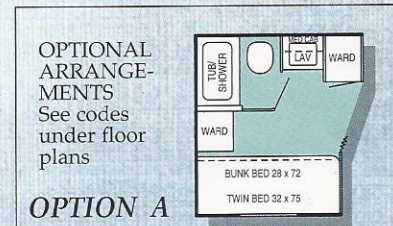
230 SL



234 SL



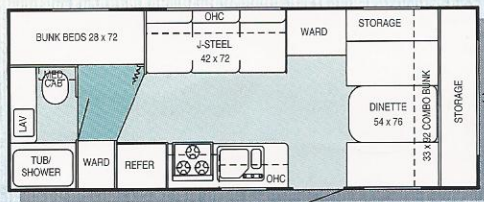
240 SL OPTION A & B



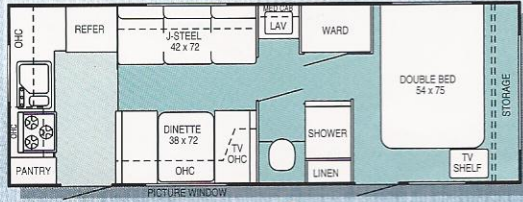
OPTIONAL ARRANGEMENTS

See codes under floor plans

OPTION B



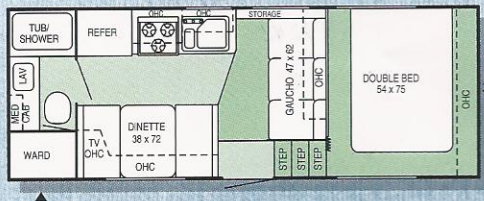
244 SL



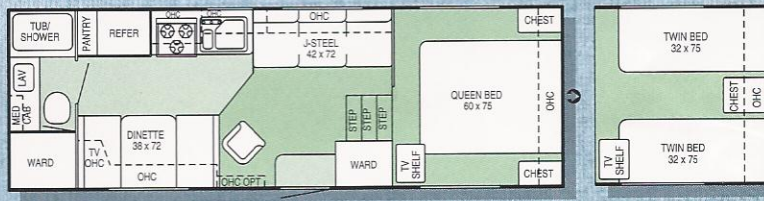
256 SL

**NEW!**

## Eagle SL™ Fifth Wheels

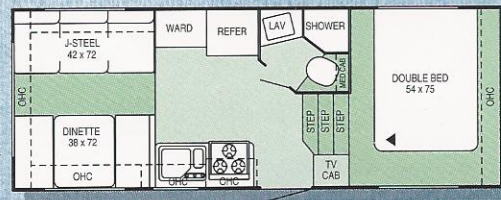


207 SL



247 SL

Twin Bed Option



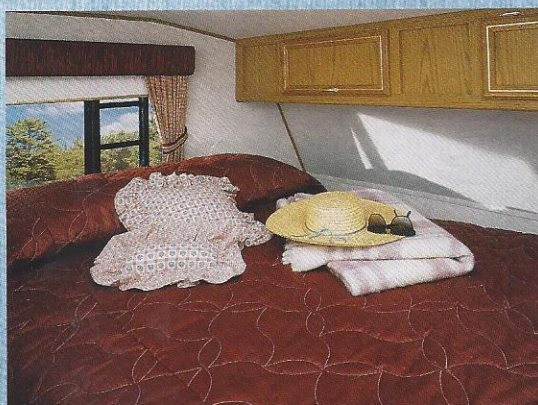
211 SL

KEY TO FLOOR PLAN CODES:  
 ◁ = Front ▶ = Outside Storage Compartment

### 1996 EAGLE SL TRAVEL TRAILER/FIFTH WHEEL SPECIFICATIONS

	EXTERIOR LENGTH	EXTERIOR HEIGHT*	BEDROOM INTERIOR HEADROOM	APPROX. DRY WEIGHT W/STANDARD EQUIPMENT (LBS.)	APPROX. DRY HITCH WEIGHT (LBS.)	GROSS VEHICLE WEIGHT RATING (LBS.)	FRESH WATER TANK (GALS.)	GRAY WATER HOLDING TANK (GALS.)	TOILET W/WASTE HOLDING TANK (GALS.)	OPTIONAL AWNING LENGTH (FT.)
<b>TRAVEL TRAILERS</b>										
210 SL	21' 5"	118"	77"	3485	425	5700	36	25	25	11'
220 SL	22' 10"	118"	77"	3640	440	5700	36	25	25	13'
230 SL	23' 8"	118"	77"	3570	550	5800	36	25	25	14'
234 SL	23' 8"	118"	77"	3790	550	5800	36	25	25	14'
240 SL	24' 10"	118"	77"	3865	505	6200	36	25	25	13'
244 SL	24' 11"	118"	77"	3940	515	6200	36	25	25	14'
256 SL	26' 6"	118"	77"	4295	560	6400	36	25	25	16'
<b>5TH WHEELS</b>										
207 SL	22' 1"	132"	44"	3855	730	6100	36	25	25	10'
211 SL	22' 11"	132"	44"	3830	850	6100	36	25	25	14'
247 SL	24' 11"	132"	44"	4145	730	7000	36	25	25	16'

\* Includes optional roof air conditioning



Bedrooms are warm and comfortable, as shown here in the Eagle 207 SL Fifth Wheel.

# YOU'LL LOVE THESE FEATURES!

## MEGA-TRUNK



Dual LP-gas bottles, stowed in their own easy-to-get-at compartment on the side of the RV



Thoughtful entryway grab-handle inside the RV



Large-capacity, flush-mounted, double-door refrigerator



Huge exterior storage trunk, uniquely and conveniently positioned at the front of the RV; full 25-cubic-foot capacity; interior light; strong, dent-resistant ABS lid; support arm to hold lid open

On the cover: Eagle 234 SL Travel Trailer; Eagle 207 SL Fifth Wheel

## EAGLE SL STANDARD FEATURES

### EXTERIOR FEATURES

- Full Width 25 Cu. Ft. Front Storage Compartment (Travel Trailers Only)
- Radial Tires
- Fiberglass Stoneguard on Front Window (Travel Trailers Only)
- Double Entrance Step, Self-Storing, Non-Skid
- Clear-Lens Patio Light with Inside Switch
- White-Framed Entry Door
- Radius-Cornered Windows
- Dead-Bolt Lock on Entrance door
- Drain-Hose Carrier Bumper

### HEAT, POWER AND WATER

- Twin 30# LP-Gas Tanks with Regulator, in Lockable Side Compartment
- Water-Heater Bypass Kit
- Water-System Winterization Kit
- City Water Hook-Up
- 6-Gallon Gas Water Heater
- Brass and Copper Water Fittings
- Systems Monitor Panel
- 12-Volt Electric System with 110-Volt Converter
- 30-Amp Power Cord
- 110-Volt Exterior Receptacle
- Auto-Ignition Furnace with Thermostat
- In-Floor Ducted Heat

### LIVING ROOM

- Large Dinette
- J-Steel Sofa Converts to Bed (Some Models)
- Oak-Grain Panel Doors and Drawers
- Radius Residential-Style Trim and Molding

- Interior Entrance Door Grab-Handle
- Deep-Pile, No-Track Carpeting with 1/2" Pad
- Coordinated Fabrics Throughout
- Fabric-Covered Box Valances, Window Drapes, and Tie Backs
- Roller Shades
- Decorative Glass in Overhead Cabinets
- Crank-Up TV Antenna with Signal Booster

### KITCHEN

- Residential-Style Mixing Faucet
- Caulked-In-Place 60/40 Porcelain Sink
- Oak Sink-Cover Cutting Board
- Attractive, Coordinated Countertops
- Large Flush-Mount Double-Door Refrigerator
- Three-Burner Range with 9,000-BTU "SuperBurner"
- Oversized Oven
- Range Hood with Light and Fan
- Extra-Long Silverware Drawer
- Deep, Lipped Overhead Cabinets

### BEDROOM

- Innerspring Mattress (Some Models)
- Bed Struts for Easy-Lift-Up Beds, Storage Underneath (Some Models)
- Coordinated, Quilted Bed Spread and Head Board (Not in Bunk Beds)
- Flush Wardrobe Doors with Homestyle Handles
- Radius-Cornered Vented Windows
- TV Cabinet or Flip-Up TV Shelf (Some Models)

### BATHROOM

- 12-Volt Power-Vent with Frosted Lens
- Seamless ABS Tub/Shower Surround

- Wood Medicine Cabinet with Mirror (Most Models)
- Shower Curtain
- Towel Holder

## INTERIOR OPTIONAL FEATURES

- Raised-Panel Oak Doors and Drawers
- Bi-Fold Shower Door
- Kitchen or Bathroom Carpeting
- Mini Blinds
- Safety Glass
- Battery-Operated Clock
- Cable-TV Hook-Up
- Phone Jack
- 800-Watt Microwave Oven with Carousel
- Roof Air-Conditioning
- Bath Skylight (on Some Models)
- Range Cover
- 6-Gallon Gas/Electric Auto-Ignition Water Heater
- Coach Battery
- Stereo AM/FM Cassette

## EXTERIOR OPTIONAL FEATURES

- Rear Window Stoneguard Awning (on Certain Models)
- Patio Awning
- Spare Tire, Carrier and Cover
- Stabilizer Jacks
- Rubber Roof
- Insulated Holding Tanks
- Extra Roof Insulation
- Outside Shower

We cordially invite you, as we do all Jayco owners, to join the Jayco Jafari



International Travel Club. Ask your dealer about the Jafari chapter, or "flight," as it's called, in your area. Or write Jayco direct.

#### LIMITED WARRANTY

Jayco recreation vehicles are warranted to the original owner for twelve (12) months from the date of purchase against defects in materials and workmanship. Please refer to the limited warranty available at your Jayco dealership.

#### PLEASE NOTE

All information in this brochure is the latest available at the time of publication approval. Jayco reserves the right to make changes and to discontinue models without notice or obligation. Pictures in this brochure may show optional equipment. RVs built for sale in Canada may differ to conform to Canadian codes.

For Further Information and Prices, See:

CUNNELLY'S CAMPER CORNER  
335 South 5th Ave.  
BROKEN BOW, NE 68822  
308-872-6603

WELCOME HOME



# Jayco®

Jayco, Inc.  
P.O. Box 460  
Middlebury, IN 46540

