

International Serenity



For the utmost in tranquility, Airstream has created the International Serenity. Every interior shape, surface and color is designed to envelop the mind and body in a soothing den of luxury and comfort. The Serenity captures a tasteful "East meets West" elegance with Corian® countertops, handcrafted curved cabinetry and accents of lemongrass and rice paper that deliver luxury and tranquility in one harmonious design.

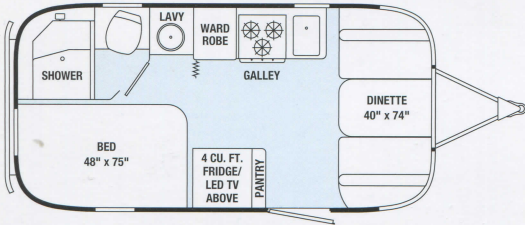
*You'll feel the calming spirit
the moment you enter.*



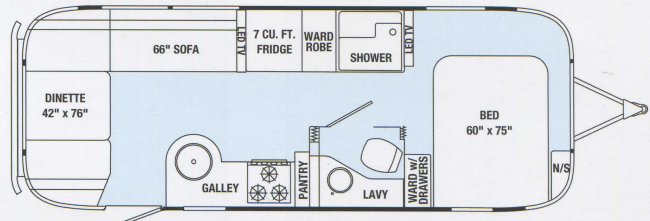
30 INTERNATIONAL SERENITY



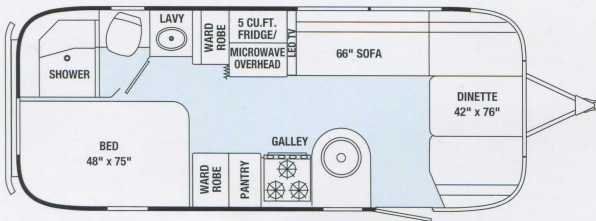
International Serenity Floorplans



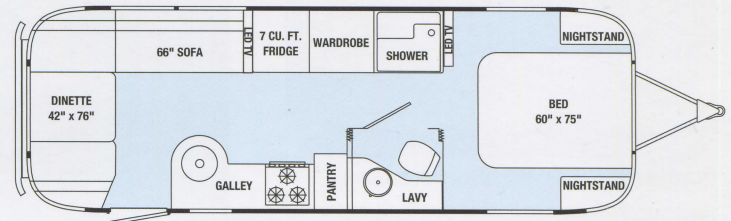
19 International Serenity



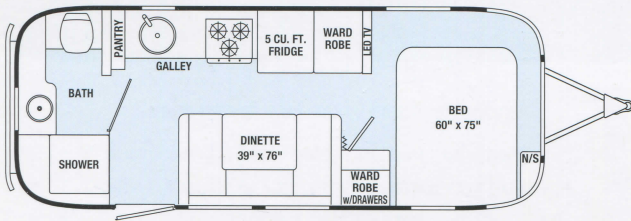
25FB International Serenity



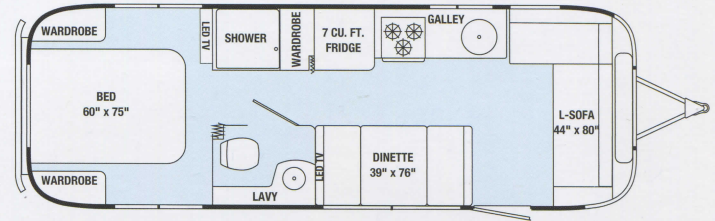
23D International Serenity



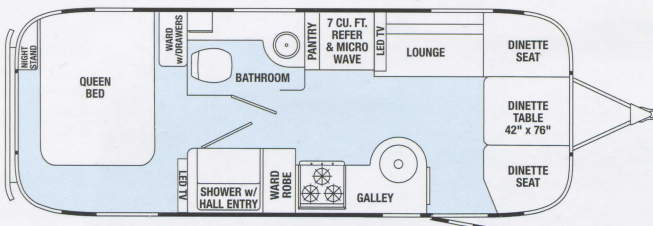
27FB International Serenity



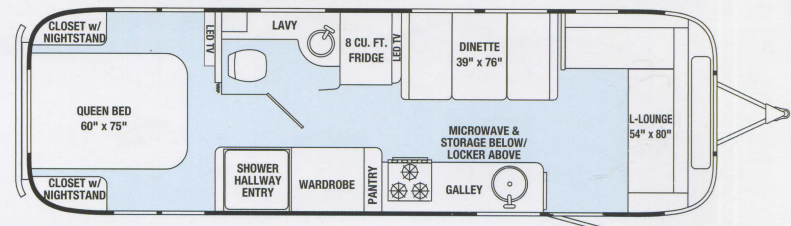
23FB International Serenity



28 International Serenity



25 International Serenity



30 International Serenity



Axle

19

or



Axles

23D thru 30



GVWR

4,500 - 8,800 lbs



Length

19'2" - 30'11"



Sleeps

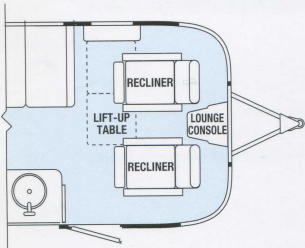
2-6

Interior Décors

- Oyster Ultraleather™
- Espresso Ultraleather™
- Salsa Ultraleather™

SPECIFICATIONS	19	23D	23FB	25	25FB	27FB	28	30
Exterior Length	19' 2"	23'	23' 9"	25' 11"	25' 11"	28'	27' 11"	30' 11"
Exterior Width	8'	8'	8'	8' 5.5"	8' 5.5"	8' 5.5"	8' 5.5"	8' 5.5"
Interior Width	7' 7"	7' 7"	7' 7"	8' 1"	8' 1"	8' 1"	8' 1"	8' 1"
Exterior Height with A/C	9' 5"	9' 5"	9' 5"	9' 9"	9' 9"	9' 9"	9' 9"	9' 9"
Interior Height with A/C	6' 4.5"	6' 4.5"	6' 4.5"	6' 7.5"	6' 7.5"	6' 7.5"	6' 7.5"	6' 7.5"
Hitch Weight (w/LP & w/o options, water & cargo) (lbs.)	550	720	467	886	833	770	950	880
Unit Base Weight (w/LP & w/o options, water & cargo) (lbs.)	3,823	4,761	4,806	5,580	5,612	5,824	5,923	6,382
Gross Vehicle Weight Rating (lbs.)	4,500	6,000	6,000	7,300	7,300	7,600	7,600	8,800
Net Carrying Capacity (NCC=GVWR-UBW) (lbs.)	677	1,239	1,194	1,720	1,688	1,776	1,687	2,418
Fresh Water Tank (gal.)	23	39	39	39	39	39	39	54
Gray Water Tank (gal.)	21	21	30	35	37	37	37	38
Black Water Tank (gal.)	18	18	18	37	39	39	35	38
Water Heater w/electronic ignition (gal.)	6	6	6	6	6	6	6	6
A/C w/heat pump (BTU)	13,500	13,500	13,500	15,000	15,000	15,000	15,000	15,000
Furnace (BTU)	16,000	25,000	18,000	25,000	25,000	25,000	30,000	30,000
LPG (2 - 30 lb. steel tanks)	60	60	60	60	60	60	60	60
Deep Cycle Battery (lead acid) Group 24	2	2	2	2	2	2	2	2
Sleeping Capacity	2-4	2-5	2-4	2-5	2-5	2-5	2-6	2-6
LP (2 30 lb. steel tanks) (lbs.)	60	60	60	60	60	60	60	60
Deep Cycle Battery (lead acid) Group 24	2	2	2	2	2	2	2	2
Sleeping Capacity	2-4	2-5	2-4	2-5	2-5	2-5	2-6	2-6

Please visit www.airstream.com to learn more and to find your nearest Airstream Dealer.



adventure, inspired by
AIRSTREAM



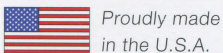
Airstream Online

Learn more! visit www.airstream.com

To find more helpful hints, product selector tools,
 locate a dealer or learn more about our heritage
 and our community,
 please visit www.airstream.com.



THOR
 INDUSTRIES, INC.



Airstream is a subsidiary
 of Thor Industries, Inc.

Airstream now offers
 24/7 roadside service &
 technical assistance
 provided by CoachNet.



Airstream, Inc.
 419 West Pike Street
 P.O. Box 629
 Jackson Center, OH 45334 USA
 937-596-6111

All content and images
 © Airstream 2014 & 2015
 International Serenity 15k 0/14

Product information, specifications, and photography in this brochure were as accurate as possible at time of printing. Photographs may contain some features that are optional on your vehicle. Since we continually strive to improve our products, actual products may differ. Prices and specifications are subject to change without notice. All capacities are approximate and dimensions are nominal. Some features or options may be different or unavailable in Canada.

Vehicle Loading – Every effort has been made to provide the greatest number of options for the recreation vehicle owner. Along with these choices comes the responsibility to manage the loads that are imposed by the choices so that they remain within the manufacturer's specified chassis weight limits. Do not overload the recreation vehicle.

Dry Weights - based on standard features; optional equipment not included. Net Carrying Capacity (NCC) is determined by subtracting Unit Base Weight (UBW) from the Gross Vehicle Weight Rating (GVWR), and is the capacity available for water, options and cargo. Liquid capacities and weights are approximations only.

Warning – This information is intended as a guide only. Weights of individual vehicles may vary. Consult your owner's manual for complete loading, weighing, and towing instructions.