

COUGAR

PREMIUM FIFTH WHEELS · HALF-TON FIFTH WHEELS & TRAVEL TRAILERS



KEYSTONE
RV COMPANY

CAMP BETTER



2023 COUGAR | EXCEPTIONAL FEATURES (ALL MODELS)

- **NEW** EXTERIOR GRAPHICS PACKAGE
- PAINTED FRONT CAP W/ AUTOMOTIVE CLEAR COAT
- ALPHA PLY ROOF W/ LIFETIME WARRANTY
- GIGGY BOX: INDUSTRY'S FIRST ORGANIZED 12 VOLT WIRE DISTRIBUTION
- GOODYEAR™ TIRES
- TIRE LINC TPMS PREP
- ROAD ARMOR SUSPENSION & PIN BOX (FW ONLY)
- CLIMATE GUARD PROTECTION PACKAGE
- AUTO LEVELING (SELECT TT ONLY)
- HYPERDECK™ HIGH-PERFORMANCE WATER-RESISTANT RV FLOORS (1/2 TON FW & TT)
- IN-COMMAND® GENERATION 3 W/ GLOBAL CONNECT
- WINEGARD 360 PLUS WI-FI PREP
- KEY TV
- COLOR CODED & NUMBERED WIRING
- 3 YEAR WARRANTY
- AMY GRAY SIGNATURE™ INTERIOR DESIGN
- SLIM SHADE ON ENTRY DOOR
- **NEW** GIRARD ON-DEMAND WATER HEATER
- **NEW** 12V FURRION REFRIGERATOR
- GRIDDLE (SELECT FLOOR PLANS)
- SOLARFLEX™ 400I AND SOLARFLEX™ 600I-L SOLAR POWER OPTIONS W/OPTIONAL DRAGONFLY ENERGY LITHIUM-ION BATTERIES

2023 COUGAR | EXCEPTIONAL FIFTH WHEEL FEATURES

- ROAD ARMOR SUSPENSION & PIN BOX
- DEEPER BED SLIDE W/ MORE WALKAROUND SPACE
- CPAP-READY NIGHT STANDS
- DURABLE RUBBER FLOORING IN PASS THROUGH
- STACKABLE W/D PREP
- **NEW** FURRION 16 CU. FT. REFRIGERATOR

VISIT OUR WEBSITE FOR PHOTOS,
360° TOURS, AND FULL PRODUCT DETAILS





KEYSTONE COUGAR IS CELEBRATING 25 YEARS OF INDUSTRY LEADERSHIP

THE BRAND HAS NEVER LOOKED BETTER WITH ITS STYLISH NEW FRONT CAP AND GRAPHICS, AND AMY GRAY SIGNATURE INTERIOR DESIGN.

Cougar offers a wide selection of the most-loved travel trailer and fifth wheel floorplans, designed for both half-ton and full-size pick ups. The Cougar line-up is designed to grow with your family—from your first RV to your last. Join the generations of campers that have returned to Cougar for the brand's cutting-edge innovation, quality, style and affordability.

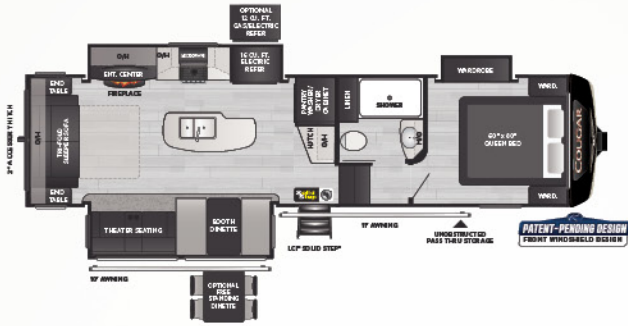


"We chose the 2021 Cougar 368MBI for several reasons. The mid bunk room being the main one, but also the kitchen style (island!) and storage. We didn't even realize we had two huge storage areas under the pull out couches until a year of full timing. What a pleasant surprise that was!"



@RVHAPPYET — COUGAR 368MBI OWNERS

PREMIUM FW



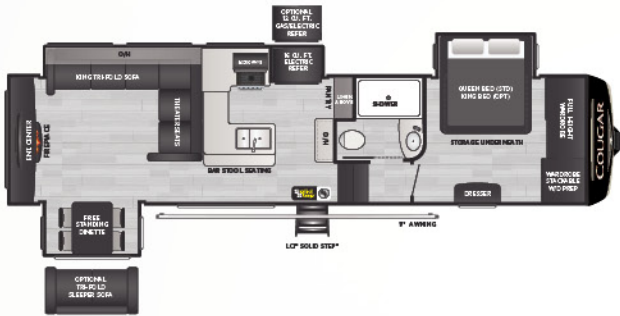
290RLS | WEIGHT 10124 | LENGTH 33' 8"

PREMIUM FW • REAR LIVING, STACKABLE W/D PREP, THREE SLIDES



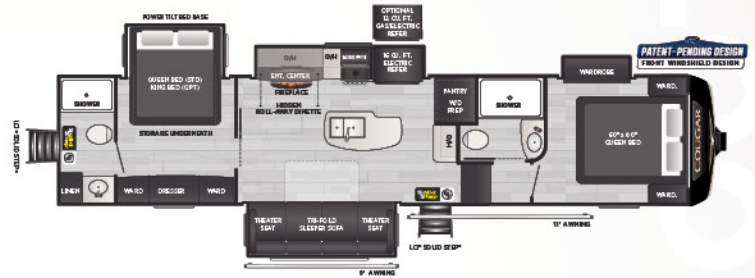
316RLS | WEIGHT 10562 | LENGTH 35' 8"

PREMIUM FW • DOUBLE VANITY, REAR LIVING ROOM, THREE SLIDES



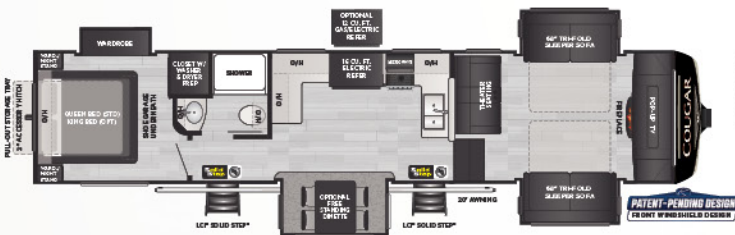
NEW! **320RDS** | WEIGHT TBD | LENGTH 36' 3"

PREMIUM FW • REAR DEN, GIANT L-SHAPE LOUNGE



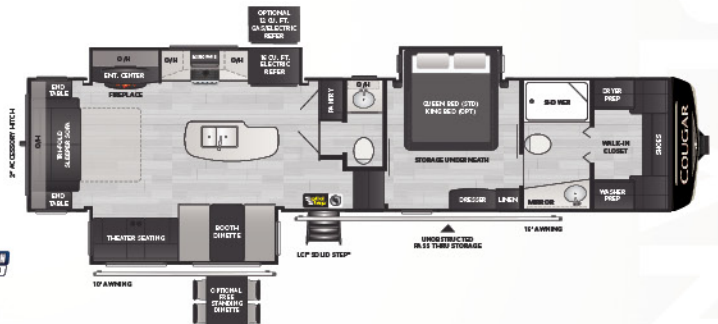
NEW! **350DMS** | WEIGHT TBD | LENGTH 39' 5"

PREMIUM FW • DOUBLE MASTER SUITE, STACKABLE W/D



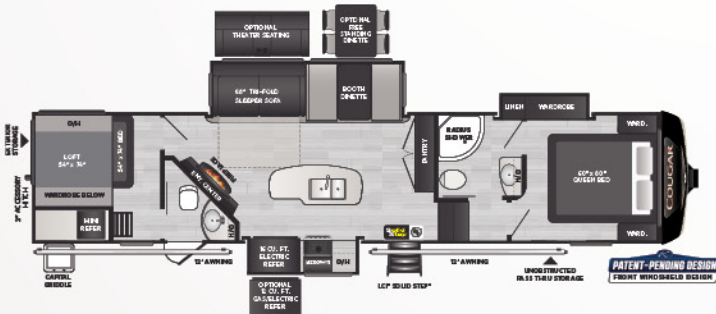
354FLS | WEIGHT 11041 | LENGTH 39' 2"

PREMIUM FW • FRONT LIVING, PULL-OUT REAR STORAGE TRAY



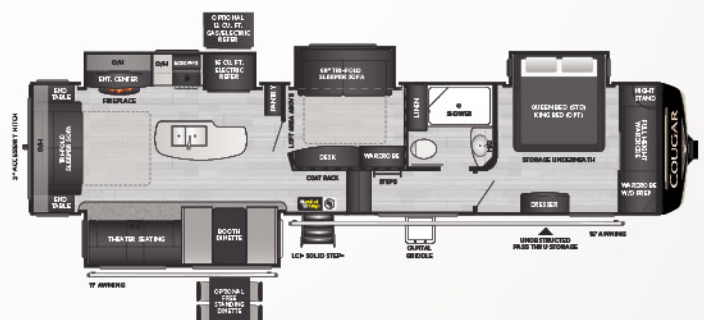
355FBS | WEIGHT 11357 | LENGTH 39' 3"

PREMIUM FW • 1/2 FRONT BATH/REAR LIVING, WALK-IN CLOSET



364BHL | WEIGHT 11404 | LENGTH 39' 0"

PREMIUM FW • 2 BEDROOM, 1-1/2 BATH W/LOFT



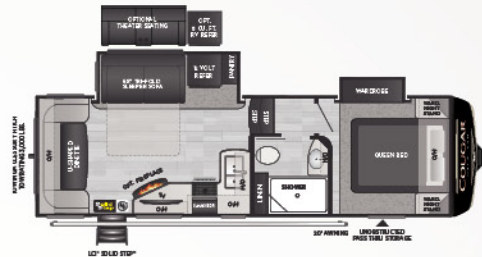
368MBI | WEIGHT 11847 | LENGTH 39' 3"

PREMIUM FW • BONUS ROOM W/LOFT, ISLAND KITCHEN

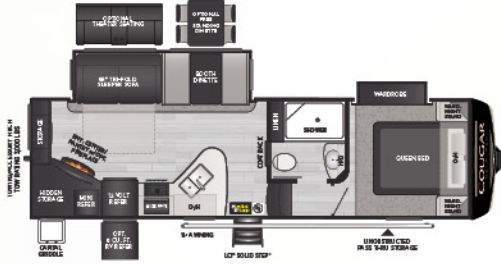
HALF-TON FW



NEW! 23MLE | WEIGHT 7560 | LENGTH 27' 11"
HALF-TON FW • MID LIVING, OUTSIDE KITCHEN



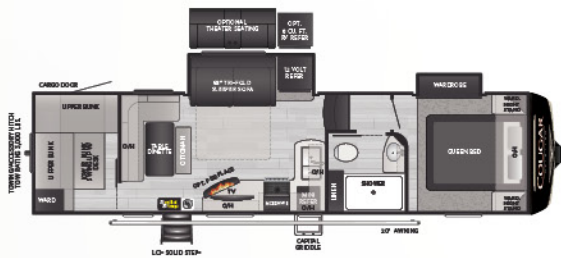
24RDS | WEIGHT 7463 | LENGTH 28' 10"
HALF-TON FW • REAR DINETTE, TWO SLIDES



25RES | WEIGHT 7681 | LENGTH 28' 9"
HALF-TON FW • REAR ENTERTAINMENT, OUTSIDE KITCHEN



27SGS | WEIGHT 8211 | LENGTH 30' 6"
HALF-TON FW • SPACIOUS REAR LIVING, WARDROBE SLIDE



NEW! 29BHL | WEIGHT 8125 | LENGTH 33' 4"
HALF-TON FW • BUNKHOUSE, MURPHY BED W/ DESK



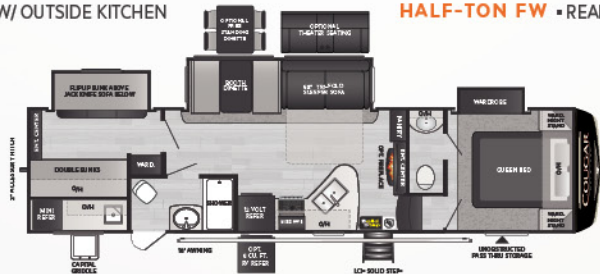
29MBS | WEIGHT 8985 | LENGTH 32' 9"
HALF-TON FW • MID-BONUS ROOM, LARGE KITCHEN



29RKS | WEIGHT 8958 | LENGTH 32' 9"
HALF-TON FW • REAR KITCHEN, OPEN CONCEPT W/ OUTSIDE KITCHEN



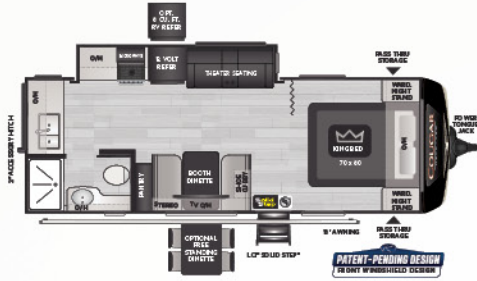
29RLI | WEIGHT 8893 | LENGTH 32' 9"
HALF-TON FW • REAR LIVING, GOURMET KITCHEN



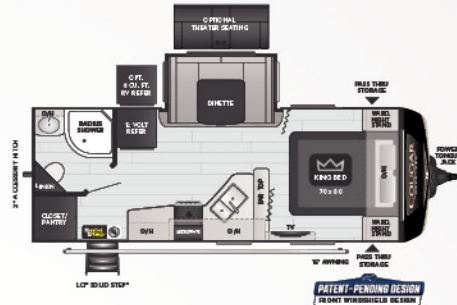
32BHS | WEIGHT 9428 | LENGTH 35' 8"
HALF-TON FW • 1-1/2 BATH BUNKHOUSE

NEW! 23MLE 24RDS 25RES 27SGS 29BHL 29MBS 29RKS 29RLI 32BHS

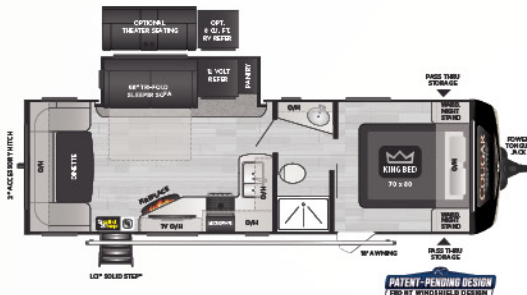
HALF-TON TT



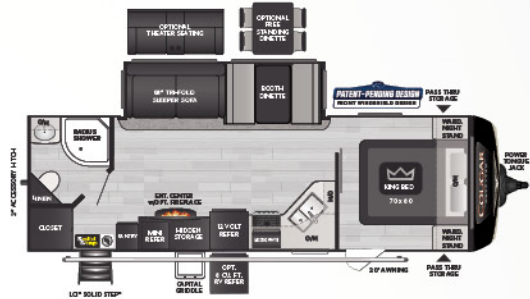
22MLS WEIGHT 5794 LENGTH 26' 10"
HALF-TON TT • SPACIOUS MID-LIVING, KING BED



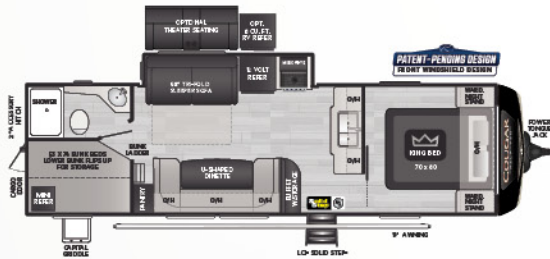
22RBS WEIGHT 5621 LENGTH 25' 11"
HALF-TON TT • SPACIOUS, REAR BATH, LARGE DINETTE SLIDE



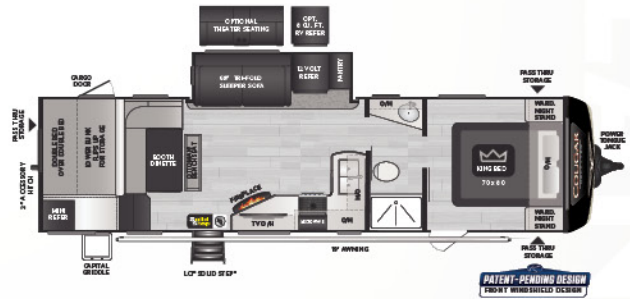
25RDS WEIGHT 6303 LENGTH 29' 10"
HALF-TON TT • HUGE REAR DINETTE, COUNTERTOP SPACE, PRIVATE BEDROOM



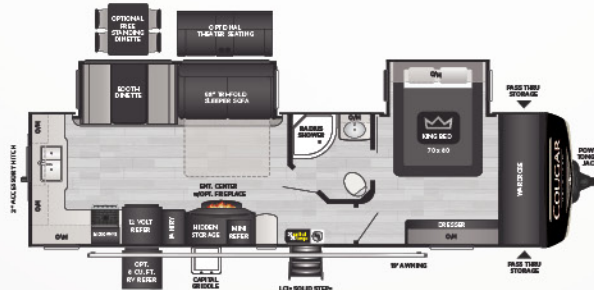
26RBS WEIGHT 6696 LENGTH 29' 11"
HALF-TON TT • REAR BATH W/ OUTSIDE KITCHEN



NEW! 27BHS WEIGHT TBD LENGTH 31' 11"
HALF-TON TT • DOUBLE BUNK BEDS, U-SHAPE DINETTE



30BHS WEIGHT 7136 LENGTH 34' 5"
HALF-TON TT • REAR BUNK LOFT W/ FULL BASEMENT STORAGE



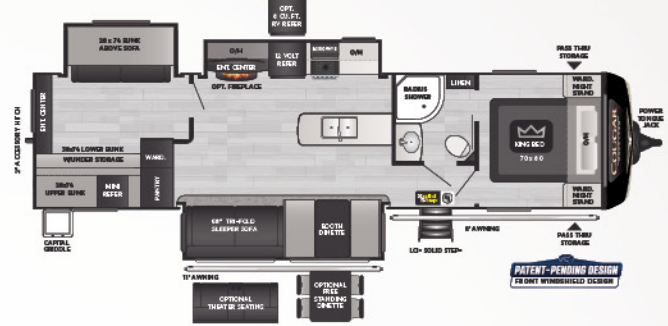
30RKD WEIGHT 7704 LENGTH 34' 9"
HALF-TON TT • REAR KITCHEN, KING BED SLIDE W/ LARGE FRONT CLOSET

HALF-TON TT



33RLI | WEIGHT 8690 | LENGTH 37' 5"

HALF-TON TT • REAR LIVING ROOM, KING BED SLIDE W/ LARGE FRONT CLOSET



34TSB | WEIGHT 8547 | LENGTH 37' 5"

HALF-TON TT • THREE-SLIDE BUNKHOUSE W/ OUTSIDE KITCHEN

MODEL	WEIGHT	CARRYING CAPACITY	HITCH WEIGHT	FRESH WATER**	WASTE WATER	GRAY WATER	LPG	LENGTH*	WIDTH	HEIGHT	AWNING
PREMIUM FW											
29ORLS	10124	2076	1805	75	38	76	60	33' 8"	8'	13' 4"	11'/10'
316RLS	10562	1738	1900	75	38	76	60	35' 8"	8'	13' 4"	13'/10'
320RDS	TBD	TBD	TBD	75	38	76	60	36' 3"	8'	13' 4"	20'
350DMS	TBD	TBD	TBD	75	76	114	60	39' 5"	8'	13' 4'	20'
354FLS	11041	2959	2365	75	38	76	60	39' 2"	8'	13' 4'	20'
355FBS	11357	2543	1900	75	76	76	60	39' 3"	8'	13' 4'	16'/10'
364BHL	11404	2596	2200	75	76	76	60	39' 0"	8'	13' 5"	12'/12'
368MBI	11847	2133	1980	75	38	76	60	39' 3"	8'	13' 4"	16'/11'
HALF-TON FW											
23MLE	7560	2440	1545	54	30	60	60	27' 11"	8'	12' 0"	16'
24RDS	7463	2537	1430	54	30	60	60	28' 10"	8'	12' 7"	20'
25RES	7681	2319	1505	54	30	60	60	28' 9"	8'	12' 7"	14'
27SGS	8211	2079	1495	54	30	60	60	30' 6"	8'	12' 7"	10'
29BHL	8195	2805	1755	54	30	60	60	33' 4"	8'	12' 8"	20'
29MBS	8985	2015	1630	54	30	60	60	32' 9"	8'	12' 0"	9'/11'
29RLI	8893	2107	1630	54	30	60	60	32' 9"	8'	12' 8"	10'/10'
29RKS	8958	1442	1605	54	30	60	60	32' 9"	8'	12' 7"	20'
32BHS	9428	2072	1570	54	60	60	60	35' 8"	8'	12' 7"	18'
HALF-TON TT											
22MLS	5794	1406	645	54	30	30	60	26' 10"	8'	11' 5"	18'
22RBS	5621	1579	630	54	30	30	60	25' 11"	8'	11' 5"	16'
25RDS	6303	2497	835	54	30	60	60	29' 10"	8'	11' 5"	18'
26RBS	6696	2104	880	54	30	60	60	29' 11"	8'	11' 5"	20'
27BHS	TBD	TBD	TBD	54	38	76	60	31' 11"	8'	11' 3"	19'
30BHS	7136	2364	790	54	30	60	60	34' 5"	8'	11' 5"	19'
30RKD	7704	1796	955	54	30	60	60	34' 9"	8'	11' 5"	19'
33RLI	8690	1810	1215	54	30	60	60	37' 5"	8'	11' 4"	14'/10'
34TSB	8547	1953	1150	54	30	60	60	37' 5"	8'	11' 4"	8'/11'



TAKE CHARGE OF HOW YOU CAMP

EXCEPTIONAL QUALITY, IMPOSSIBLY VERSATILE, SolarFlex™ IS SHATTERING CUSTOMER'S EXPECTATIONS OF FACTORY-INSTALLED SOLAR POWER. EXCLUSIVELY AVAILABLE ON ALL KEYSTONE RV MODELS.



Relieve battery anxiety with legendary Lithium-ion deep cycle batteries – the ultimate replacement for lead acid. Lightweight, reliable, and longer-lasting, Dragonfly Energy batteries are made in the USA and available exclusively from Keystone RV and authorized dealers.

MY KEYSTONE OWNER'S APP

THE ONLY APP YOU'LL NEED...

» MANUALS & QUICK START GUIDES

» HOW-TO VIDEOS



» FIRST-TIME CAMPER'S ADVICE

» ACCESS TO YOUR RV'S MOBILE APPS

Available for iOS and Android devices.



FOLLOW US FOR THE LATEST!



DISCLAIMER: Product Information is as accurate as possible as of the date of publication of this brochure. All features, floor plans, and specifications in this brochure are subject to change without notice. Please also consult Keystone's web site at www.keystonerv.com for more current product information and specifications. Tow Vehicle Disclaimer. CAUTION: Owners of Keystone recreational vehicles are solely responsible for the selection and proper use of tow vehicles. All customers should consult with a motor vehicle manufacturer or their dealer concerning the purchase and use of suitable tow vehicles for Keystone products. Keystone disclaims any liability or damages suffered as a result of the selection, operation, use or misuse of a tow vehicle. KEYSTONE'S LIMITED WARRANTY DOES NOT COVER DAMAGE TO THE RECREATIONAL VEHICLE OR THE TOW VEHICLE AS A RESULT OF THE SELECTION, OPERATION, USE OR MISUSE OF THE TOW VEHICLE. *Length is defined as the distance from the centerline of hitch pin/coupler to rear bumper of trailer. ** Fresh water capacity includes water heater. Please review owner's manual prior to purchase for more information on service warranties, extended use, towing and maintenance. Owner's manuals can be found at keystonerv.com.

PRINT 09.2022