

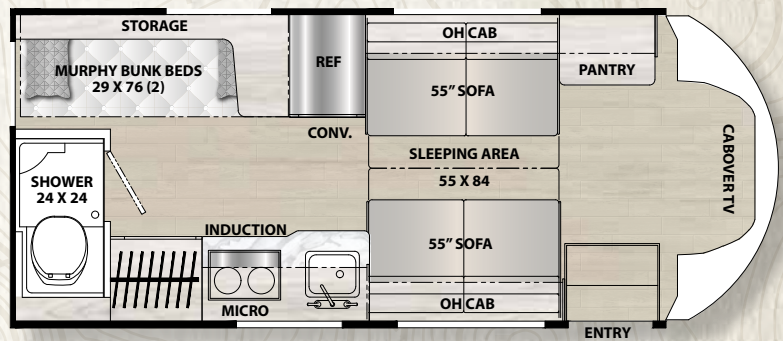
COACHMEN CROSS TRAIL EV



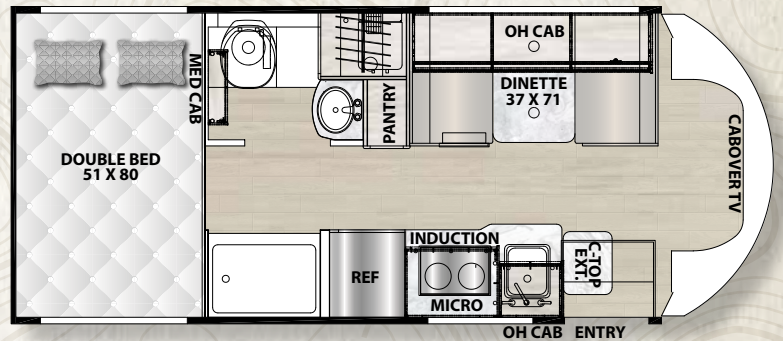
KEY FEATURES

1. ECOFLOW Power Kits
2. Standard 416AMP/HR Lithium Battery
 - Optional: Dual 416AMP/HR Lithium Batteries
3. 3,600W Inverter
4. Gen Prep (Standard)
 - Optional: 2-Way LP & Gas Generator
5. Azdel Substrate with Aluminum Framing. The Thickest Azdel in its Class Assuring Lifetime Integrity
6. Ford Transit Chassis
 - 3.5L Ecoboost Engine
 - 10-Speed Automatic Overdrive with Select-Shift Transmission
 - Available All Wheel Drive
7. Dual 250 Amp Alternator
8. Efficiently Recharges Coach Batteries
9. Lane Keeping Assist
10. Adaptive Cruise Control
11. Induction Cooktop
12. Convection Microwave

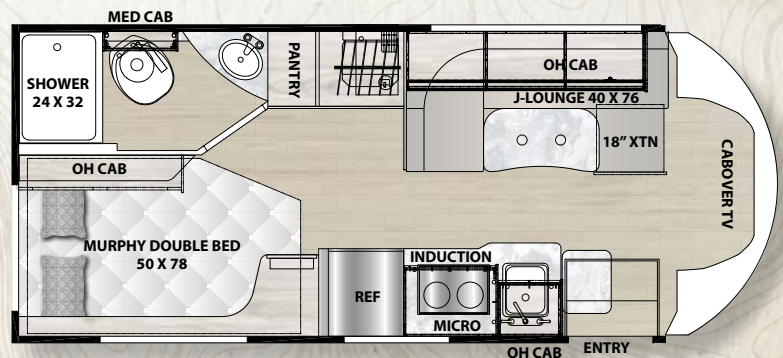
20BH



20XG



21XG



SPECIFICATIONS

	20BH	20XG	21XG
CHASSIS	FORD TRANSIT T350 AWD	FORD TRANSIT T350 AWD	FORD TRANSIT T350 AWD
ENGINE	V6 3.5L EcoBoost	V6 3.5L EcoBoost	V6 3.5L EcoBoost
HORSE POWER	310	310	310
TORQUE	400	400	400
WHEEL BASE	156"	156"	156"
GVWR (LBS.)	11,000	11,000	11,000
GCWR (LBS.)	15,000	15,000	15,000
UVW (APPROX. LBS.)	8,532	8,510	8,632
CCC (APPROX. LBS.)	2,050	2,490	2,368
GAWR FRONT (LBS.)	4,630	4,630	4,630
GAWR REAR (LBS.)	7,275	7,275	7,275
INTERIOR HEIGHT	6' 7"	6' 7"	6' 7"
EXTERIOR WIDTH	7' 7"	7' 7"	7' 7"
EXTERIOR HEIGHT (WITH A/C)	10' 4"	10' 4"	10' 4"
EXTERIOR LENGTH (WITH HITCH)	24' 2"	24' 2"	24' 2"
HITCH WEIGHT (LBS.)	4,000	4,000	4,000
FUEL CAPACITY (GAL.)	31	32	32
LP CAPACITY (LBS.)	70	70	70
FRESH WATER CAPACITY (GAL.)	25	30	29
WATER HEATER CAPACITY (GAL.)	TANKLESS	TANKLESS	TANKLESS
GREY TANK CAPACITY (GAL.)	31	27	59
BLACK TANK CAPACITY (GAL.)	31	28	28
EXTERIOR STORAGE (CU. FT.)	TBD	130	47
AWNING LENGTH	14' ARMLESS	14' ARMLESS	14' ARMLESS

GVWR (Gross Vehicle Weight Rating) is the maximum permissible weight of the unit when fully loaded. It includes all weights, inclusive of all fluids, occupants, cargo, optional equipment and accessories. For safety and product performance do NOT exceed the GVWR.

GCWR (Gross Combined Weight Rating) is the maximum permissible loaded weight of your motor home and any towed trailer or towed vehicle. Actual GCWR of this vehicle may be limited by the sum of the GVWR and the installed hitch receiver maximum capacity rating; see hitch rating label for detail.

GAWR (Gross Axle Weight Rating) is the maximum permissible weight, including cargo, fluids, optional equipment and accessories that can be safely supported by each axle.

UVW (Unloaded Vehicle Weight)* is the typical weight of the unit as manufactured at the factory. It includes all weight at the unit's axle(s), including full fuel, all fluids and LP Gas. The UVW does not include cargo, fresh potable water, additional optional equipment or dealer installed accessories.

*Estimated Average based on standard build optional equipment.

CCC (Cargo Carrying Capacity)** is the amount of weight available for fresh potable water, cargo, passengers, additional optional equipment and accessories. CCC is equal to GVWR minus UVW. Available CCC should accommodate fresh potable water (8.3 lbs per gallon). Before filling the fresh water tank, empty the black and gray tanks to provide for more cargo capacity.

** Estimated average based on standard build optional equipment

Each Coachmen motorhome is weighed at the manufacturing facility prior to shipping. A label identifying the unloaded vehicle weight of the actual unit and the cargo carrying capacity is applied to every Coachmen motorhome prior to leaving our facilities.

The load capacity of your unit is designated by weight, not by volume, so you cannot necessarily use all available space when loading your unit.

Actual towing capacity is dependent upon your particular loading and towing circumstances, which includes the GVWR, GAWR and GCWR as well as adequate trailer brakes. Please refer to the Operator's Manual of your vehicle for further towing information.



FREE MEMBERSHIP
www.coachmenowners.com



Download a virtual brochure at
www.coachmenrv.com



24/7 EMERGENCY ROADSIDE ASSISTANCE WITH VEHICLE PURCHASE*

TOWING
JUMP STARTS
TIRE ASSISTANCE
DELIVERY OF FUEL &
EMERGENCY FLUIDS
LOCKSMITH/LOCKOUT
SERVICES

WINCH OUT
MOBILE TIRE SERVICE
TECHNICAL SUPPORT
RV MOBILE
MECHANIC
DEALER LOCATOR
SERVICES



*VALID FOR 1 YEAR FROM DATE OF PURCHASE



YOUR CROSS TRAIL DEALER



Learn More:

Scan this barcode using a QR reader on your smart phone to learn more about Forest River.



FOREST RIVER

A Berkshire Hathaway Company



COACHMEN

Coachmen RV, a Division of Forest River, Inc.,
A Berkshire Hathaway Company

423 N. Main St., P.O. Box 30, Middlebury, IN 46540

To learn more about Coachmen RV and our products and see how Coachmen is making the easy life easier, visit
www.coachmenrv.com

All information contained in this brochure is believed to be accurate at the time of publication. However, during the model year, it may be necessary to make revisions and Coachmen reserves the right to make all such changes without notice, including prices, colors, materials, equipment and specifications as well as the addition of new models and the discontinuance of models shown in this brochure. Therefore, please consult with your Coachmen dealer and confirm the existence of any materials, design or specifications that are material to your purchase decision. 08/24

COACHMEN CROSS TRAIL EV



SPRINTER CHASSIS

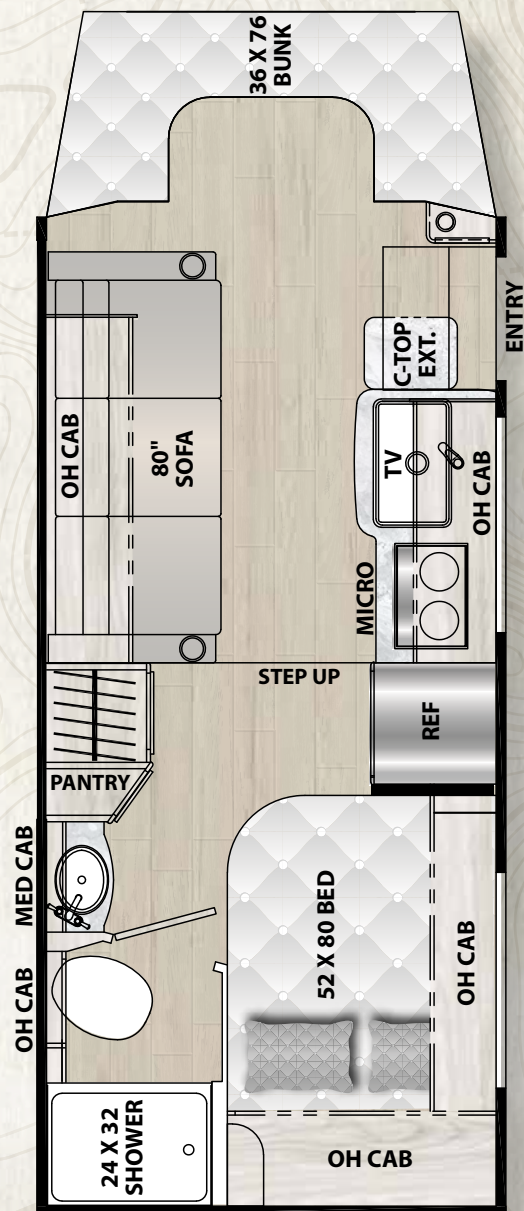
KEY FEATURES

CROSS TRAIL CANYON PACKAGE EXTERIOR

1. Generator Prep (Standard)
2. Silver Color Infused Sidewalls
3. Armless Power Awning w/LED Lights and Wind Sensor
4. Exterior LED Halo Taillights
5. Running Boards
6. 5,000 lb Towing Hitch w/7-Way Plug
7. Back Up Camera (Standard)
8. Side View Cameras (Optional)
9. Black Tank Flush
10. Heated Tank Pads
11. Solar Power Prep
12. Omni Directional TV/FM/AM Antenna
13. Black Aluminum Rims
14. Cab Paint w/Black Bumpers
15. Front Bumper Running Lights

CROSS TRAIL CANYON PACKAGE INTERIOR

1. Technoform Italian Cabinets
2. Driver/Passenger Swivel Seats
3. 80" Jackknife Sofa
4. Chassis Dash Radio and Touch Screen
5. Integrated Day/Night Window Shades
6. Interior TV
7. Convection Microwave
8. 12V 6.2 cu. ft. Refrigerator
9. 2-Burner Induction Cooktop
10. Ducted Furnace
11. 11,000 BTU A/C
12. On Demand Water Heater
13. Interior LED Lights
14. Bunk Ladder
15. Specialized Dispatch Services
Roadside Assistance



24FL

SPECIFICATIONS

24FL	
CHASSIS	MERCEDES SPRINTER
ENGINE	V6 3.5L EcoBoost
HORSE POWER	208
TORQUE	322
WHEEL BASE	170"
GVWR (LBS.)	11,030
GCWR (LBS.)	15,250
UVW (APPROX. LBS.)	TBD
CCC (APPROX. LBS.)	TBD
GAWR FRONT (LBS.)	4,410
GAWR REAR (LBS.)	7,720
INTERIOR HEIGHT	6' 9"
EXTERIOR WIDTH	7' 8"
EXTERIOR HEIGHT (WITH A/C)	11' 7"
EXTERIOR LENGTH (WITH HITCH)	24' 2"
HITCH WEIGHT (LBS.)	TBD
FUEL CAPACITY (GAL.)	32
LP CAPACITY (LBS.)	80
FRESH WATER CAPACITY (GAL.)	29
WATER HEATER CAPACITY (GAL.)	TANKLESS
GREY TANK CAPACITY (GAL.)	32
BLACK TANK CAPACITY (GAL.)	35
EXTERIOR STORAGE (CU. FT.)	TBD
AWNING LENGTH	14' ARMLESS

GVWR (Gross Vehicle Weight Rating) is the maximum permissible weight of the unit when fully loaded. It includes all weights, inclusive of all fluids, occupants, cargo, optional equipment and accessories. For safety and product performance do NOT exceed the GVWR.

GCWR (Gross Combined Weight Rating) is the maximum permissible loaded weight of your motor home and any towed trailer or towed vehicle. Actual GCWR of this vehicle may be limited by the sum of the GVWR and the installed hitch receiver maximum capacity rating; see hitch rating label for detail.

GAWR (Gross Axle Weight Rating) is the maximum permissible weight, including cargo, fluids, optional equipment and accessories that can be safely supported by each axle.

UVW (Unloaded Vehicle Weight)* is the typical weight of the unit as manufactured at the factory. It includes all weight at the unit's axle(s), including full fuel, all fluids and LP Gas. The UVW does not include cargo, fresh potable water, additional optional equipment or dealer installed accessories.

*Estimated Average based on standard build optional equipment.

CCC (Cargo Carrying Capacity)** is the amount of weight available for fresh potable water, cargo, passengers, additional optional equipment and accessories. CCC is equal to GVWR minus UVW. Available CCC should accommodate fresh potable water (8.3 lbs per gallon). Before filling the fresh water tank, empty the black and gray tanks to provide for more cargo capacity.

** Estimated average based on standard build optional equipment

Each Coachmen motorhome is weighed at the manufacturing facility prior to shipping. A label identifying the unloaded vehicle weight of the actual unit and the cargo carrying capacity is applied to every Coachmen motorhome prior to leaving our facilities.

The load capacity of your unit is designated by weight, not by volume, so you cannot necessarily use all available space when loading your unit.

Actual towing capacity is dependent upon your particular loading and towing circumstances, which includes the GVWR, GAWR and GCWR as well as adequate trailer brakes. Please refer to the Operator's Manual of your vehicle for further towing information.



FREE MEMBERSHIP
www.coachmenowners.com



Download a virtual brochure at
www.coachmenrv.com



YOUR CROSS TRAIL DEALER



**24/7 EMERGENCY
ROADSIDE ASSISTANCE
WITH VEHICLE PURCHASE***

TOWING
JUMP STARTS
TIRE ASSISTANCE
DELIVERY OF FUEL &
EMERGENCY FLUIDS
LOCKSMITH/LOCKOUT
SERVICES

WINCH OUT
MOBILE TIRE SERVICE
TECHNICAL SUPPORT
RV MOBILE
MECHANIC
DEALER LOCATOR
SERVICES



*VALID FOR 1 YEAR FROM DATE OF PURCHASE



Learn More:

Scan this barcode using a QR reader on your smart phone to learn more about Forest River.



FOREST RIVER

A Berkshire Hathaway Company



COACHMEN

Coachmen RV, a Division of Forest River, Inc.,
A Berkshire Hathaway Company

423 N. Main St., P.O. Box 30, Middlebury, IN 46540

To learn more about Coachmen RV and our products and see how Coachmen is making the easy life easier, visit
www.coachmenrv.com

All information contained in this brochure is believed to be accurate at the time of publication. However, during the model year, it may be necessary to make revisions and Coachmen reserves the right to make all such changes without notice, including prices, colors, materials, equipment and specifications as well as the addition of new models and the discontinuance of models shown in this brochure. Therefore, please consult with your Coachmen dealer and confirm the existence of any materials, design or specifications that are material to your purchase decision. 08/24

©Copyright 2024 Coachmen RV a Division of Forest River Inc – All Rights Reserved.

COACHMEN CROSS TRAIL XTREME



KEY FEATURES

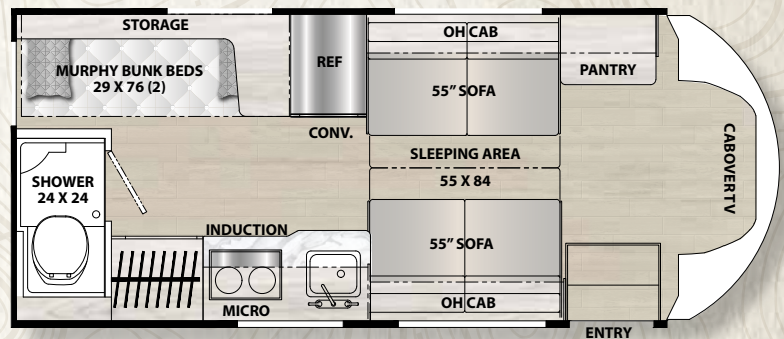
EV PACKAGE

1. Renogy Empowered State-of-the-Art Hybrid Electrical System
2. Standard 400AMP/HR Lithium Battery
- Optional: 800AMP/HR Lithium Batteries
3. 3,000W Inverter
4. Gen Prep
5. Ford Transit AWD Chassis
6. Dual 250 Amp Alternator
7. Induction Cooktop
8. Convection Microwave

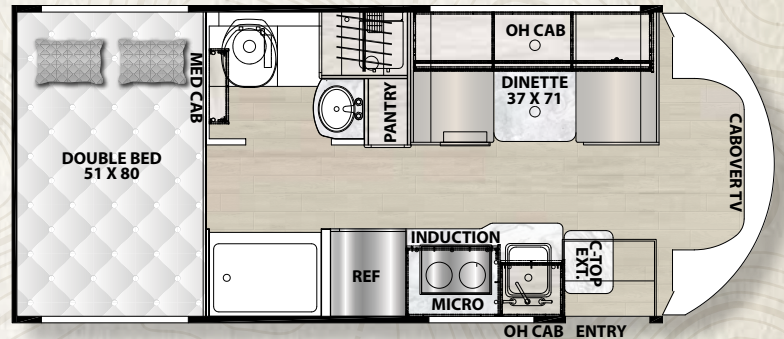
XTREME PACKAGE

1. Van Compass 2" Suspension Lift
2. Falcon Racing Shocks
3. All Terrain Tires
4. Black Out Aluminum Rims
5. Front Bumper Brush Guard w/LED Lights
6. Rigid Running Boards
7. XTREME Graphics Package
8. Induction Cooktop
9. Convection Microwave

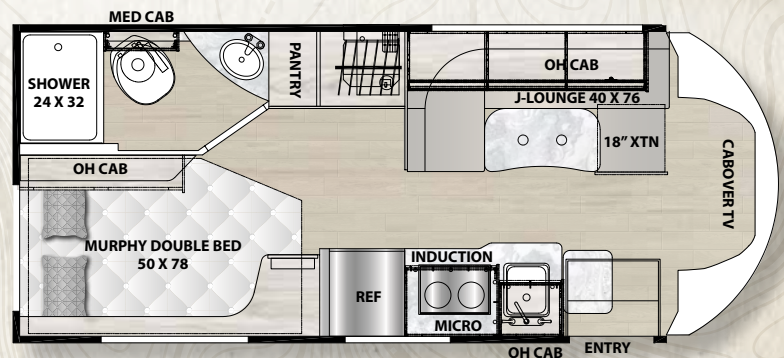
20BH



20XG



21XG



SPECIFICATIONS

	20BH	20XG	21XG
CHASSIS	FORD TRANSIT T350 AWD	FORD TRANSIT T350 AWD	FORD TRANSIT T350 AWD
ENGINE	V6 3.5L EcoBoost	V6 3.5L EcoBoost	V6 3.5L EcoBoost
HORSE POWER	310	310	310
TORQUE	400	400	400
WHEEL BASE	156"	156"	156"
GVWR (LBS.)	11,000	11,000	11,000
GCWR (LBS.)	15,000	15,000	15,000
UVW (APPROX. LBS.)	8,532	8,510	8,632
CCC (APPROX. LBS.)	2,050	2,490	2,368
GAWR FRONT (LBS.)	4,630	4,630	4,630
GAWR REAR (LBS.)	7,275	7,275	7,275
INTERIOR HEIGHT	6' 7"	6' 7"	6' 7"
EXTERIOR WIDTH	7' 7"	7' 7"	7' 7"
EXTERIOR HEIGHT (WITH A/C)	10' 4"	10' 4"	10' 4"
EXTERIOR LENGTH (WITH HITCH)	24' 2"	24' 2"	24' 2"
HITCH WEIGHT (LBS.)	4,000	4,000	4,000
FUEL CAPACITY (GAL.)	31	32	32
LP CAPACITY (LBS.)	70	70	70
FRESH WATER CAPACITY (GAL.)	25	30	29
WATER HEATER CAPACITY (GAL.)	TANKLESS	TANKLESS	TANKLESS
GREY TANK CAPACITY (GAL.)	31	27	59
BLACK TANK CAPACITY (GAL.)	31	28	28
EXTERIOR STORAGE (CU. FT.)	TBD	130	47
AWNING LENGTH	14' ARMLESS	14' ARMLESS	14' ARMLESS

GVWR (Gross Vehicle Weight Rating) is the maximum permissible weight of the unit when fully loaded. It includes all weights, inclusive of all fluids, occupants, cargo, optional equipment and accessories. For safety and product performance do NOT exceed the GVWR.

GCWR (Gross Combined Weight Rating) is the maximum permissible loaded weight of your motor home and any towed trailer or towed vehicle. Actual GCWR of this vehicle may be limited by the sum of the GVWR and the installed hitch receiver maximum capacity rating; see hitch rating label for detail.

GAWR (Gross Axle Weight Rating) is the maximum permissible weight, including cargo, fluids, optional equipment and accessories that can be safely supported by each axle.

UVW (Unloaded Vehicle Weight)* is the typical weight of the unit as manufactured at the factory. It includes all weight at the unit's axle(s), including full fuel, all fluids and LP Gas. The UVW does not include cargo, fresh potable water, additional optional equipment or dealer installed accessories.

*Estimated Average based on standard build optional equipment.

CCC (Cargo Carrying Capacity)** is the amount of weight available for fresh potable water, cargo, passengers, additional optional equipment and accessories. CCC is equal to GVWR minus UVW. Available CCC should accommodate fresh potable water (8.3 lbs per gallon). Before filling the fresh water tank, empty the black and gray tanks to provide for more cargo capacity.

** Estimated average based on standard build optional equipment

Each Coachmen motorhome is weighed at the manufacturing facility prior to shipping. A label identifying the unloaded vehicle weight of the actual unit and the cargo carrying capacity is applied to every Coachmen motorhome prior to leaving our facilities.

The load capacity of your unit is designated by weight, not by volume, so you cannot necessarily use all available space when loading your unit.

Actual towing capacity is dependent upon your particular loading and towing circumstances, which includes the GVWR, GAWR and GCWR as well as adequate trailer brakes. Please refer to the Operator's Manual of your vehicle for further towing information.



FREE MEMBERSHIP
www.coachmenowners.com



Download a virtual brochure at
www.coachmenrv.com



YOUR CROSS TRAIL DEALER

24/7 EMERGENCY ROADSIDE ASSISTANCE WITH VEHICLE PURCHASE*

TOWING
JUMP STARTS
TIRE ASSISTANCE
DELIVERY OF FUEL &
EMERGENCY FLUIDS
LOCKSMITH/LOCKOUT
SERVICES

WINCH OUT
MOBILE TIRE SERVICE
TECHNICAL SUPPORT
RV MOBILE
MECHANIC
DEALER LOCATOR
SERVICES



*VALID FOR 1 YEAR FROM DATE OF PURCHASE



Learn More:

Scan this barcode using a QR reader on your smart phone to learn more about Forest River.



FOREST RIVER

A Berkshire Hathaway Company



COACHMEN

Coachmen RV, a Division of Forest River, Inc.,
A Berkshire Hathaway Company

423 N. Main St., P.O. Box 30, Middlebury, IN 46540

To learn more about Coachmen RV and our products and see how Coachmen is making the easy life easier, visit
www.coachmenrv.com

All information contained in this brochure is believed to be accurate at the time of publication. However, during the model year, it may be necessary to make revisions and Coachmen reserves the right to make all such changes without notice, including prices, colors, materials, equipment and specifications as well as the addition of new models and the discontinuance of models shown in this brochure. Therefore, please consult with your Coachmen dealer and confirm the existence of any materials, design or specifications that are material to your purchase decision. 08/24

COACHMEN CROSS TRAIL

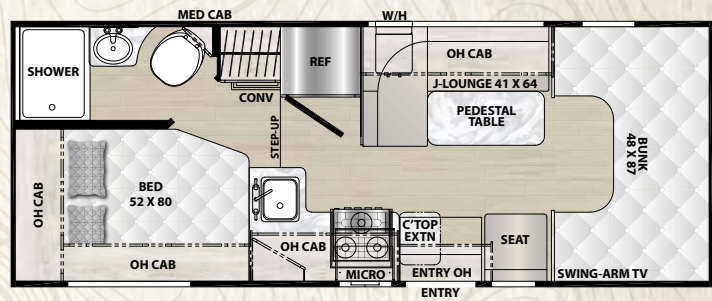
XL



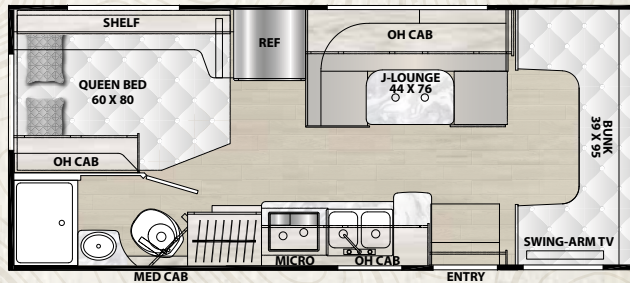
KEY FEATURES

- 1. Incredible Storage on All Floorplans**
- 2. Coachmen Even Cool Ducting System** (On Select Models)
- 3. Pre-Wired for Rooftop Solar and Sidewall Portable Solar Panel**
- Optional: Rooftop 200W or 400W Solar Panel and Solar Controller
- 4. Residential Queen-Sized Bed**
- 5. Azdel Substrate with Aluminum Framing.** The Thickest Azdel in its Class Assuring Lifetime Integrity
- 6. Shorter Cabover Bunk**
- Increases Curb Appeal and Improves Vision for Driver and Passenger
- 7. Standard: 4,000W Onan Generator On Board**
- 8. Oversized Rear Cargo Storage** (On Select Models)

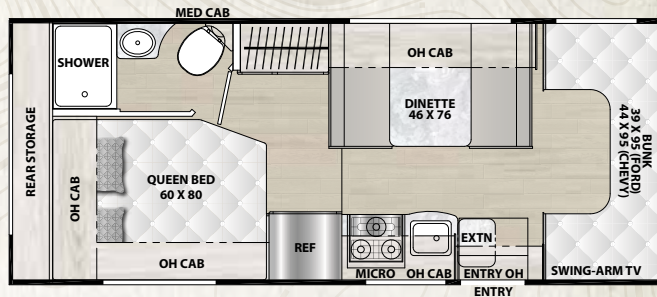
20CB



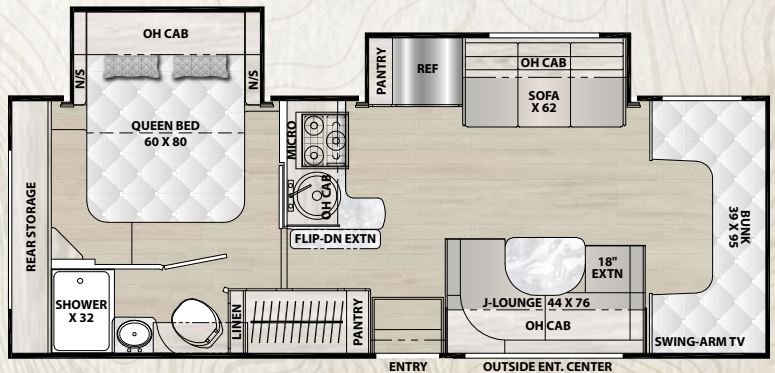
22XG



23XG



26XG



SPECIFICATIONS

	20CB	22XG	23XG	26XG
CHASSIS	FORD TRANSIT T350 AWD	350 FORD	350 FORD	450 FORD
ENGINE	V6 3.5L EcoBoost	V8 7.3L	V8 7.3L	V8 7.3L
HORSE POWER	310	350	350	350
TORQUE	400	468	468	468
WHEEL BASE	156"	158"	158"	190"
GVWR (LBS.)	11,000	12,500	11,000	14,500
GCWR (LBS.)	15,000	15,000	15,000	22,000
UVW (APPROX. LBS.)	8,058	9,441	9,721	11,715
CCC (APPROX. LBS.)	2,709	3,059	2,779	2,785
GAWR FRONT (LBS.)	4,630	5,000	4,630	5,000
GAWR REAR (LBS.)	7,275	8,500	7,275	9,600
INTERIOR HEIGHT	6' 9"	6' 11"	6' 11"	6' 11"
EXTERIOR WIDTH	7' 7"	8' 4"	8' 4"	8' 4"
EXTERIOR HEIGHT (WITH A/C)	10' 4"	10' 10"	10' 10"	10' 11"
EXTERIOR LENGTH (WITH HITCH)	23' 11"	24' 3"	25' 8"	29' 4"
HITCH WEIGHT (LBS.)	4,000	5,000	5,000	7,500
FUEL CAPACITY (GAL.)	31	32	32	32
LP CAPACITY (LBS.)	69	70	70	70
FRESH WATER CAPACITY (GAL.)	38	41	50	50
WATER HEATER CAPACITY (GAL.)	TANKLESS	TANKLESS	TANKLESS	TANKLESS
GREY TANK CAPACITY (GAL.)	13	28	32	31
BLACK TANK CAPACITY (GAL.)	21	31	31	31
EXTERIOR STORAGE (CU. FT.)	60.8	47	146	124
AWNING LENGTH	14'	15'	16'	16'

GVWR (Gross Vehicle Weight Rating) is the maximum permissible weight of the unit when fully loaded. It includes all weights, inclusive of all fluids, occupants, cargo, optional equipment and accessories. For safety and product performance do NOT exceed the GVWR.

GCWR (Gross Combined Weight Rating) is the maximum permissible loaded weight of your motor home and any towed trailer or towed vehicle. Actual GCWR of this vehicle may be limited by the sum of the GVWR and the installed hitch receiver maximum capacity rating; see hitch rating label for detail.

GAWR (Gross Axle Weight Rating) is the maximum permissible weight, including cargo, fluids, optional equipment and accessories that can be safely supported by each axle.

UVW (Unloaded Vehicle Weight)* is the typical weight of the unit as manufactured at the factory. It includes all weight at the unit's axle(s), including full fuel, all fluids and LP Gas. The UVW does not include cargo, fresh potable water, additional optional equipment or dealer installed accessories.

*Estimated Average based on standard build optional equipment.

CCC (Cargo Carrying Capacity)** is the amount of weight available for fresh potable water, cargo, passengers, additional optional equipment and accessories. CCC is equal to GVWR minus UVW. Available CCC should accommodate fresh potable water (8.3 lbs per gallon). Before filling the fresh water tank, empty the black and gray tanks to provide for more cargo capacity.

** Estimated average based on standard build optional equipment

Each Coachmen motorhome is weighed at the manufacturing facility prior to shipping. A label identifying the unloaded vehicle weight of the actual unit and the cargo carrying capacity is applied to every Coachmen motorhome prior to leaving our facilities.

The load capacity of your unit is designated by weight, not by volume, so you cannot necessarily use all available space when loading your unit.

Actual towing capacity is dependent upon your particular loading and towing circumstances, which includes the GVWR, GAWR and GCWR as well as adequate trailer brakes. Please refer to the Operator's Manual of your vehicle for further towing information.



COACHMEN OWNERS ASSOCIATION

FREE MEMBERSHIP

www.coachmenowners.com



Download a virtual brochure at www.coachmenrv.com



YOUR CROSS TRAIL DEALER



**24/7 EMERGENCY
ROADSIDE ASSISTANCE
WITH VEHICLE PURCHASE***

TOWING
JUMP STARTS
TIRE ASSISTANCE
DELIVERY OF FUEL &
EMERGENCY FLUIDS
LOCKSMITH/LOCKOUT
SERVICES

WINCH OUT
MOBILE TIRE SERVICE
TECHNICAL SUPPORT
RV MOBILE
MECHANIC
DEALER LOCATOR
SERVICES



*VALID FOR 1 YEAR FROM DATE OF PURCHASE



Learn More:

Scan this barcode using a QR reader on your smart phone to learn more about Forest River.



FOREST RIVER

A Berkshire Hathaway Company



COACHMEN

Coachmen RV, a Division of Forest River, Inc.,
A Berkshire Hathaway Company

423 N. Main St., P.O. Box 30, Middlebury, IN 46540

To learn more about Coachmen RV and our products and see how Coachmen is making the easy life easier, visit www.coachmenrv.com

All information contained in this brochure is believed to be accurate at the time of publication. However, during the model year, it may be necessary to make revisions and Coachmen reserves the right to make all such changes without notice, including prices, colors, materials, equipment and specifications as well as the addition of new models and the discontinuance of models shown in this brochure. Therefore, please consult with your Coachmen dealer and confirm the existence of any materials, design or specifications that are material to your purchase decision. 08/24