

QUALITY

Winnebago RVs are designed and built around you, with superior craftsmanship, advanced manufacturing technologies and steel-focused construction to enhance safety and reliability.

INNOVATION

From groundbreaking RVs to game-changing features to the spacious floorplans made possible by our SmartSpace™ design, our heritage is unrivaled for continuous industry firsts in vehicle technology and design.

SERVICE

Our carefully chosen dealers are supported by factory training and our advanced parts supply system, while owners benefit from excellent real-world customer support as well as 24/7 access to online technical information.

WINNEBAGO



©2022 Winnebago. Printed in USA 05/23

WINNEBAGO

FORZA®



Discover More Freedom in Forza®

Feeling the pull of a diesel pusher?
The Winnebago® Forza® delivers all the
power, performance upgrades and enhanced
ride quality you're looking for, along with the
versatility, convenience and value to take
your adventures to the next level.



Set your sights on your next great adventure.



Purpose built. Power to spare.

The Forza combines the rugged Freightliner® XCS chassis with our signature steel SuperStructure® for uncompromising ride quality, while the 340-hp Cummins® ISB Engine delivers superior towing power.



More Room to Move

Choose from three spacious and remarkably versatile floorplans, with up to three slideouts, two baths and accommodations for up to 8 overnight guests. Engineered to entertain, the Forza offers an expansive living area, available theater seating and plentiful storage.

A Whole New Point of View

Superior comfort meets next-gen technology inside the Forza cab. From multi-adjustable recline and fixed lumbar support to full Apple CarPlay® and USB/HDMI connectivity, there is zero compromise at the wheel. The OptiView™ Dash system includes fully integrated gauges, touch-screen controls and a 360° camera system.



Radio/Rearview Monitor System

With 9" LCD color touch screen, handheld remote, rear color camera, Sirius-XM®-ready, USB input, HDMI/MHL connectivity, AppleCarPlay®, AndroidAuto.™



A beauty, more than skin-deep.

With more sophisticated styling as well as a number of exterior updates, the newest Forza shines in any environment. Available in lengths from 35'6" to 39'10", the Forza offers plenty of secure, easily accessible storage, plus an array of features to make every stay more comfortable and enjoyable.

- 1** Premium high-gloss sidewalls, highlighted with new exterior full-body paint for a more contemporary look.
- 2** Up to 228 cubic feet of lighted, heated and lined exterior storage, including a large pass-through storage bay. Side-hinged doors and rotary-style latches provide a more secure closure.
- 3** 10,000-lb. drawbar trailer hitch with 500-lb. maximum vertical tongue weight and 7-pin trailer wiring.
- 4** Stylish aluminum wheels reduce unsprung weight versus steel wheels
- 5** Shorter (12') exterior height to improve crosswind stability while still allowing 6'8" ceilings inside.
- 6** Powered patio awning with LED lighting, supplemented by an additional powered awning with LED lighting (34T) or separate powered awning shielding the entrance door (36H, 38W).
- 7** Full-perimeter ground effects lighting package for soft ambient lighting.
- 8** Exterior compartment with 110vac power, TV antenna and 3-way A/V receptacles, ready for the available exterior entertainment center and its 32" HDTV.
- 9** Pet leash tie down.



Freightliner XCS Chassis

1 Cummins® ISB 6.7L 340HP “Clean Air Diesel” Engine

Delivers 700-lb torque for hill-climbing power when you need it.

2 Allison® 2500M 6-Speed Automatic Transmission

Located on DriveTech’s right hand column-mounted control.

3 Rear Axle

Incorporates proprietary machined gears for a smoother, quieter ride.

4 Sachs Shock

Enhance control while delivering a smooth ride.

5 Neway® Front Air Suspension

Soaks up the bumps for a comfortable ride and consistent handling.

6 V-Ride Rear Suspension

Superior roll stability and predictable handling in all road conditions

7 4-Wheel ABS Anti-Lock Air Brake

Provides safe stopping power.

8 Exhaust Safe Brake

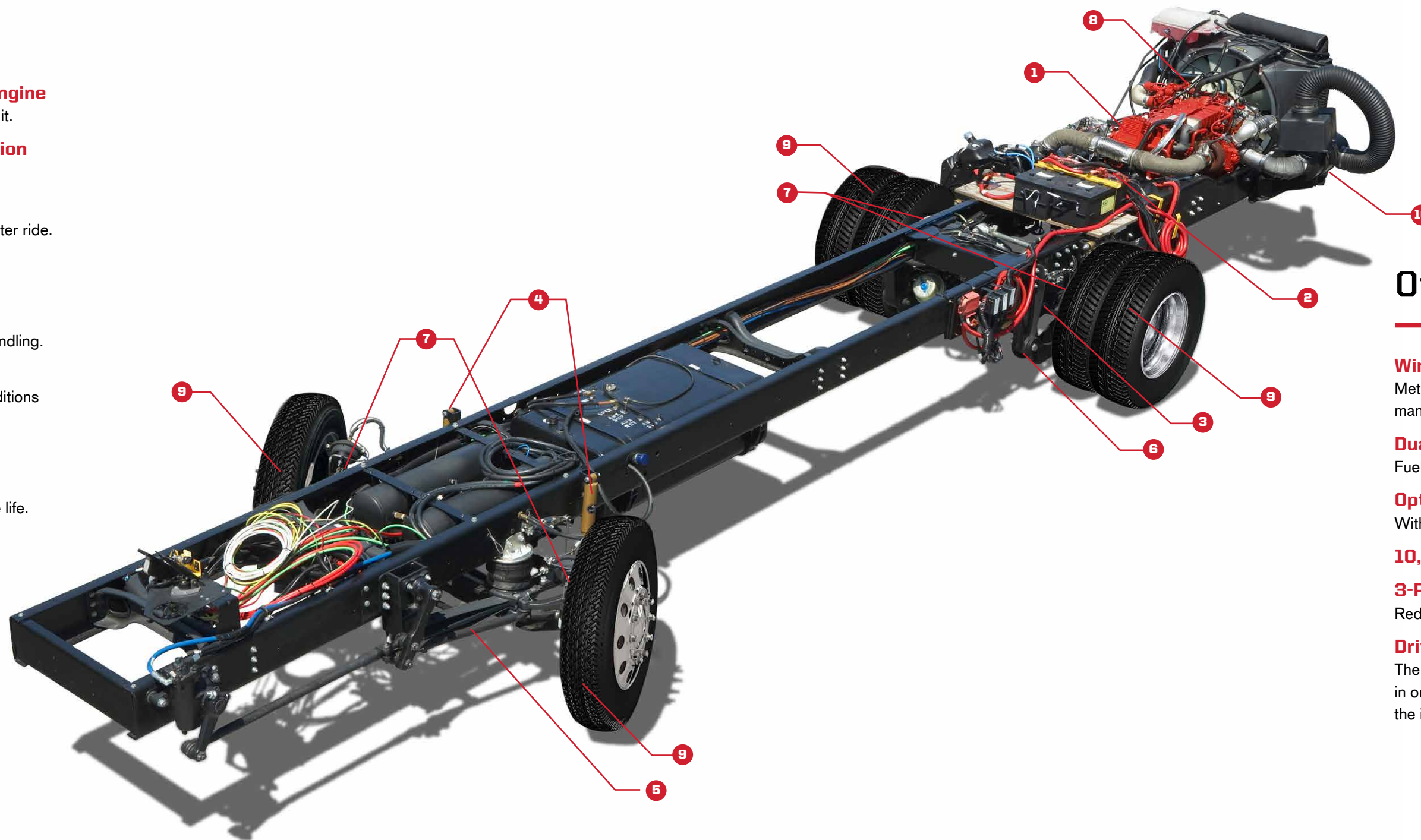
Uses compression to slow the coach, promoting longer brake life.

9 Michelin® Tires

And polished aluminum wheels.

10 BrakeSync

Factory-installed, factory-warranted supplemental braking system for your tow vehicle.



Other Key Features

Winnebago Industries SuperStructure®

Metal framework integrated with the XCS chassis delivers a well-mannered ride while providing up to 228 cubic feet of exterior storage.

Dual-Fill Fuel Tank

Fuel up on whichever side of your Forza is more convenient.

OptiView™ Digital Instrument Cluster

With adjustable brightness, anti-glare display and easy-to-read interface.

10,000-LB Trailer Hitch

3-Point Engine Mounting

Reduces engine vibration.

DriveTech Customizable System

The first RV driving system to maximize safety by putting every command in one easy-to-reach location, creating an automotive-like feel and setting the industry standard for luxury RV driving.

Step into your new comfort zone: outside the Forza®

With intelligent exterior storage and space-extending built-ins, the Forza helps you pack more into every outdoor moment.

Store more

Up to 228 cubic feet of integrated exterior storage ensures nothing gets left off your packing list.

Stay fresh

Exterior wash station keeps your gear clean and ready for tomorrow.

Turn Heads

The dynamic graphics package is a real head-turner from highway to hook-up, sun up to sundown.

Create More Space

Innovative powered armless awnings ensure you and the entire crew have it made in the shade.

Take it outside

With ground effects lighting to help set the mood, the available exterior entertainment system turns the patio area into the ultimate outdoor entertainment space.





Fully Equipped. To Far Exceed.

Binge Ready

The plush RestEasy® sofa, 50" HDTV and optional theater seating make any night perfect for movie night in.

The Right Touch

Ultrafabrics® furnishings and plank flooring deliver an upscale feel to the living spaces, highlighted throughout with well-appointed LED ceiling lights.

Dine In. Roll Out.

Generous storage, Corian® countertops and standard 2-door residential-style refrigerator make an uncompromising galley experience.

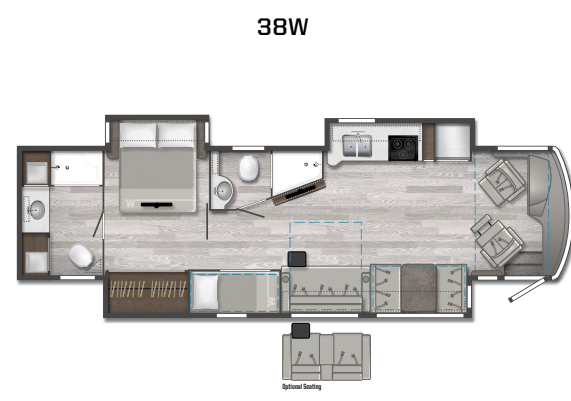
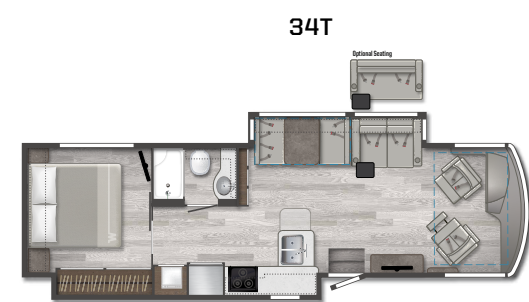
Details Done Well

With a spacious shower (two in the 38W) with textured glass door, skylight, and plenty of storage for linens, the bath and available washer/dryer are intelligently integrated into each floorplan.



Hello, Good Nights

Using the control panel, the 34T standard king bed (optional 36H) adjusts side-to-side to provide for walkaround space on either side of the bed and the optional StudioLoft™ bed upfront, along with bunk beds (38W) and room-divider curtain, the Forza comfortably accommodates up to 8 overnight guests. And everyone will rest easier with the wireless phone chargers built into each nightstand.



Dotted lines denote overhead storage area. Blue dashed lines denote sleeping areas. Floorplans are representations only and are subject to change. Please contact a certified Winnebago dealer for more information.

WINNEBAGO

FORZA® / Specifications

WEIGHTS & MEASURES	34T	36H	38W
Exterior Length	35'6"	38'2"	39'11"
Exterior Height ¹	12'	12'	12'
Exterior Width ²	8'5.5"	8'5.5"	8'5.5"
Exterior Storage ³ (cu. ft.)	153	222	228
Awning Length	17'2"	11'9"	20'
Interior Height	6'8"	6'8"	6'8"
Interior Width	8'0.5"	8'0.5"	8'0.5"
Freshwater Tank Capacity ⁴ (gal.)	84	84	100
Water Heater Capacity (gal.)	10	10	10
Holding Tank Capacity - Black ⁴ (gal.)	48	48	49
Holding Tank Capacity - Gray ⁴ (gal.)	54	44	48/51
LP Capacity ⁵ (lbs.)	97.29	97.29	97.29
Fuel Capacity (gal.)	90	90	90
GCWR ⁶ (lbs.)	33,000	33,000	33,000
GVWR (lbs.)	26,000	27,910	29,410
GAWR - Front (lbs.)	10,410	10,410	10,410
GAWR - Rear (lbs.)	17,500	17,500	19,000
Wheelbase	208"	236"	260"
Sleeps ⁷	5	6	8

Chassis

Freightliner® XCS Chassis
26,000-lb. chassis, Allison® 6-speed automatic
2500 MH transmission (34T)
27,910-lb. chassis, Allison 6-speed automatic
2500 MH transmission (36H)
29,410-lb. chassis, Allison 6-speed automatic
2500 MH transmission (38W)
340-hp Cummins® ISB 6.7L
NeWay® front air suspension
V-Ride rear air suspension
OptiView™ dash, digital instrument panel cluster
DriveTech driving system
160-amp. alternator
Air brakes w/ABS
Engine exhaust brake
Rear cap engine intake screen
Automatic hydraulic leveling jacks
7-pin trailer wiring
Trailer hitch 10,000-lb. drawbar/500-lb. maximum
vertical tongue weight
Stylized Aluminum Wheels
Slide room lock system
Information display center

Cab Conveniences

Cab seats adjustable armrests, swivel, fixed lumbar
support, and multi-adjustable recline
6-way power assist driver & passenger seat pedestal
3-point seat belts
Radio/Rearview Monitor System w/10.1" LCD color touch
screen, handheld remote, rear color camera, Sirius-XM®-ready,
USB input, HDMI/MHL connectivity, Apple CarPlay®, Android Auto™
Cruise control
12-volt power supply for CB radio
Powered blackout roller visor/shade (front windshield)
Blackout roller shade (driver and passenger windows)
Chassis/house battery radio power switch
Power mirrors w/defrost and sideview camera
Power steering
TRW® tilt/telescopic steering column w/foot-actuated pedal
Powered step well cover (NA 34T)
Cell phone interface to radio

OPTIONAL EQUIPMENT

Lounger passenger cab seat w/footrest and flip-up workstation
SiriusXM® (includes 90-day trial subscription), receiver, remote,
antenna
Powered roof vent(s)
JBL premium audio tuned 360-watt amplifier w/5 speakers
including subwoofer

Interior

50" HDTV
Theater Seating (34T)
TrueComfort+ and Sofa Sleeper (36H, 38W)
BenchMark® Dinette
Satellite system ready
Multi-plex wall switches
Digital TV amplified antenna system
Home theater sound bar system
Electric fireplace (36H, 38W)
LED ceiling lights
Blackout roller shades
Soft vinyl ceiling
OnePlace® systems center
Dual pane, tinted countoured windows
Powered ventilator fan (galley)
Washer and dryer prep
Assist bar
Vinyl flooring throughout
USB chargers (cab, lounge, bedroom)
Pull-out Table (36H)
Firefly Switch Panel lights up when dark

OPTIONAL EQUIPMENT

Washer and dryer
Winegard Trav'ler® automatic HDTV satellite system for
DirecTV® and Dish® Network
Electric fireplace (34T)
Solar/blackout roller shades
Theater Seating (36H, 38W)
RestEasy® loveseat (34T)
Studio Loft™ (powered w/ladder and LED lighting)

Galley

Corian® countertops
Corian Sink Covers
2-door 16 cu. ft. 110 VAC Residential refrigerator/
freezer, icemaker w/flip travel latch (34T, 36H)
2-door 19 cu. ft. 110 VAC Residential refrigerator/
freezer, icemaker w/flip travel latch (38W)
Microwave/convection oven w/range fan and touch control
3-burner range top w/storage below, w/glass bi-fold range
cover
Pantry
Counter top w/flip-up extension (34T, 36H)

Bath

Shower 38"x30"
Shower 30"x34" (mid-coach) (38W)
Flexible handheld showerhead
Textured glass shower door
Skylight
Porcelain toilet w/foot pedal and sprayer (electric flush in
rear bath 38W)
Powered roof vent(s)
Medicine cabinet
Linen cabinet (NA 38W)

Tissue holder
Towel bar(s)
Towel ring(s)
Laminate countertop
Matching sink cover (38W master bath)

Bedroom

28" HDTV (38W)
32" HDTV (34T)
40" HDTV (36H)
King InnoMax® Eurotop Freedom air mattress
w/controllers with storage (34T)
Queen bed w/innerspring mattress and storage below
(36H, 38W)
Bedspread and pillow shams
Bunk Beds (38W)
Room divider curtain (38W bunk beds)
Headboard
Wardrobe
Induction Chargers in each nightstand

OPTIONAL EQUIPMENT

Queen InnoMax Eurotop Freedom air mattress
w/controllers (36H, 38W)
King InnoMax Eurotop Freedom air mattress
w/controllers (36H)

Exterior

Powered patio awning w/LED lighting
2nd powered patio awning w/LED lighting (34T)
Powered awning over entrance door (36H, 38W)
Exterior compartment 110-volt duplex, TV antenna and
3-way A/V receptacles
KeyOne® lock system
LED porch light w/Interior switch
Lighted storage compartments
Automatic entrance steps
Assist handle
Lower front protective mask
Pet Pal leash tie down
Premium high-gloss sidewall skin
QuickPort service connection hatch for power cord, dump
hose, and water lines
Undercarriage lighting

OPTIONAL EQUIPMENT

Exterior entertainment center w/32" HDTV

Heating & Cooling System

2-13,500 BTU air conditioners (1 A/C, 1 A/C w/heat pump)
(34T)
2-15,000 BTU air conditioners (1 A/C, 1 A/C w/heat pump)
(36H, 38W)
35,000 BTU ducted furnace (34T)
40,000 BTU ducted furnace (36H)
2-20,000 BTU ducted furnaces (38W)

Electrical System

Service Center cable TV input, 50-amp power cord,
shoreline/generator automatic changeover switch, portable
satellite hookup
2,000-watt inverter/charger w/remote panel with coach
battery disconnect switch
6,000-watt Cummins Onan® generator
Auxiliary start circuit
AC/DC electrical distribution system
4 deep-cycle Group 31 Marine/RV batteries
Battery disconnect system (coach and chassis)
PowerLine® Energy Management System
Automatic dual-battery charge control
Automatic generator start system
Wifi router signal booster

Plumbing System

Service Center pressurized city water hookup w/diverter
fill, freshwater drain, drainage valves, exterior wash station
w/pump switch, holding tank flushing system, 20' sewer hose
On-demand water pump
TrueLevel™ holding tank monitoring system
Permanent-mount LP tank w/gauge
Heated holding tank compartment
Water system winterization package
Water system filtration package
TruTank Level Sensor
Tankless water heater w/recirculating pump

Safety

LP, smoke, and carbon monoxide detectors
Fire extinguisher
Ground fault interrupter
High-mount brake lamps
Daytime running lamps
Child seat tether anchor

Warranty

36-month/100,000-mile basic limited warranty*
10-year limited parts-and-labor warranty on fiberglass
roof skin*
*See your dealer for complete warranty information.

FOOTNOTES

- The height of each model is measured to the top of the tallest
standard feature and is based on the curb weight of a typically
equipped unit. The actual height of our vehicle may vary by
several inches depending on chassis or equipment variations.
Please contact your dealer for further information.
- Floorplans feature a wide-body design - over 96-inches. In
making your purchase decision, you should be aware that some
states restrict access on some or all state roads to 96-inches
in body width. Before making your purchase decision, you should
confirm the road usage laws in the states of interest to you.
- The load capacity of your motorhome is designated by weight,
not by volume, so you cannot necessarily use all available space
when loading your motorhome.
- Capacities are based on measurements prior to tank installation.
Slight capacity variations can result due to installation
applications.

- Capacities shown are tank manufacturer's listed water capacity
(W.C.). Actual filled LP capacity is 80% of listing due to overfilling
prevention device on tank.
- Actual towing capacity is dependent on your particular loading and
towing circumstances which includes the GVWR, GAWR and GCWR, as
well as adequate trailer brakes. Please refer to the Operator's Manual
of your vehicle for further towing information.
- Sleeping capacity is the maximum based on a specific floorplan.

Because features, specification, equipment, and options may vary
from those highlighted on this website, the buyer is responsible for
confirming with the dealer the features, specifications, equipment, and
options included in their specific vehicle.

In addition, Winnebago's program of continuous product improvement
may result in changes to vehicle specifications, equipment, model
availability, and price without notice.

**Base Manufacturers Suggested Retail Price shown. Base price does
not include tax, title, license, delivery charges or optional features.
Prices are subject to change without notice.

Freightliner is a registered trademark of Daimler Truck North America
LLC. OptiView is a trademark of Freightliner Custom Chassis Corp.
Neway is a registered trademark of SAF Holland Group. Onan is a
registered trademark of Onan Corporation. CarPlay is a registered
trademark of Apple Inc. Allison Transmission is a registered
trademark of Allison Transmission, Inc. Michelin is a registered
trademark of Michelin North America, Inc. SiriusXM is a registered
trademark of Sirius XM Radio Inc. AndroidAuto is a trademark
of Google LLC. RestEasy is a registered trademark of Hangzhou
Aojushan Textile Technology Co., Ltd. Ultrafabrics is a registered
trademark of Ultrafabrics Inc. Corian is a registered trademark of E.I.
Du Pont De Nemours and Company. Trav'ler is a registered trademark
of Winegard Company. DirecTV is a registered trademark of DirecTV,
LLC. Dish Network is a registered trademark of EchoStar Satellite,
LLC. InnoMax is a registered trademark of Innomax Corporation.
KeyOne - is a TM. KeyOne is a trademark of TriMark Corporation.

EXTERIORS



Hot Anvil



Moonlight



Silver Mist II

DECOR

Tapestry



Ultraselct Choice: Gray



Driftwood II



Wall Board



Ultraselct Choice:
Light Patterned



Countertop



Bedspread

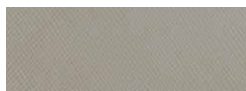


Residential Vinyl Flooring



Feature Fabric

Alpine



Ultraselct Choice: Gray



Walnut



Wall Board



Ultraselct Choice:
Light Patterned



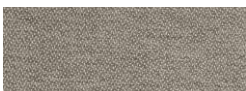
Countertop



Bedspread

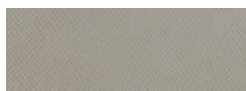


Residential Vinyl Flooring



Feature Fabric

Mineral



Ultraselct Choice: Gray



Sonoma



Wall Board



Ultraselct Choice:
Light Patterned



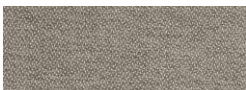
Countertop



Bedspread



Residential Vinyl Flooring



Feature Fabric

