

AKTIV 2.0

LOFT EDITION



www.gohymer.com | 1.844.GO HYMER

HYMER

Coach features

	Standard	Optional
Air conditioner – 12 V DC, 22,000 BTU undermount	X	
Awning – 12' (3,657 mm) power awning	X	
Bathroom – permanently enclosed full bathroom	X	
Battery – 2 x 6V AGM batteries	X	
Detectors – smoke, propane and CO	X	
EcoTrek 400 lithium power module		X
External power connection – w/Coax and RCA plugs	X	
Furnace – Truma Combi air and water heater - 14,300 BTU	X	
Generator – underhood 280 AMP, 12V	X	
Mattress – foldable, rear king bed	X	
Mattress – for loft bed	X	
Microwave oven – 110 V, 20 L/0.7 cu. ft., 700 W	X	
Monitor panel – water, propane and battery charge levels	X	
Power inverter/converter/transfer switch – 12/110 V, 2,000 W	X	
Propane tank – 22 L/5.9 U.S. gal.	X	
Rear power sofa		X
Refrigerator – 12 V/110 V, 3.1 cu. ft.	X	
Screen package – passenger side door, rear cargo door	X	
Stove – propane; two burner recessed with flush cover	X	
TV – 24" HD flat screen on rotating bracket with remote and DVD player w/HDMI hookup	X	
VoltStart – auto-start battery protection technology		X

Layout

Day Layout



Day Layout (with power sofa option)



Specifications

Base model – Ram Promaster 3500 extended van
Engine – 3.6L gas, V6, 24 valve
Fuel capacity – 24 U.S. gal./91 L
Exterior length – 20' 10"/6350 mm
Exterior width (excluding mirrors) – 6' 11"/2108 mm
Exterior height (with pop-top down) – 9' 1"/2770 mm
Interior standing height – 6' 1"/1854 mm
Interior aisle width – 19"/483 mm
Seating capacity – Four (optional power sofa allows seating for seven)
Sleeping capacity – Up to five
Rear king bed (width x length) – 70" x 71" (1778 mm x 1803 mm)
Loft bed (width x length) – 78" x 50.5" (1980 mm x 1282 mm)
Wheelbase – 159"/4039 mm
Fresh water capacity – 30 U.S. gal./114 L
Gray water capacity – 23 U.S. gal./87 L
Cassette toilet system – 4.6 U.S. gal./17 L
Gross Vehicle Weight Rating – 9350 lbs./4241 kg
Occupant & Cargo Carrying Capacity – 450 lbs./205 kg
Loaded Vehicle Weight – 8900 lbs./4045 kg
Towing Capacity – 3200 lbs./1455 kg

Exterior paint options



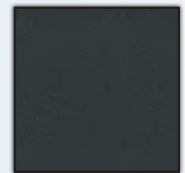
Sandstone Pearl



Silver Metallic



Bright White



Granite Metallic

Chassis features

	Standard	Optional
Airbag – driver and passenger	X	
Alternator – 220 AMP	X	
Axle – rear, 3.86 ratio	X	
Battery (engine) – 800 AMP, 12 V	X	
Brakes – anti-lock (ABS), four wheel disc	X	
Camera – rear-view backup	X	
Climate control	X	
Continental spare tire carrier & spare tire	X	
Cruise control	X	
Engine – 3.6 L gas V6, 24 valve	X	
External quick connect propane	X	
Interior LED lighting	X	
Power – 209 kW/280 HP	X	
Power mirrors	X	
Power front door step – Driver/Passenger		X
Power side entry door step	X	
Radio – AM/FM/CD/DVD/USB/GPS navigation, Bluetooth and steering wheel controls	X	
Receiver hitch – Class 3 with 4 & 7 pin connectors	X	
Stability program – including wind assist, sway assist, drift compensation, trailer sway, engine drag control, rollover mitigation, electronic stability control.	X	
Telescopic steering	X	
Tires – LT225/75R16E black wall	X	
Torque – 352 Nm/260 lb.-ft.	X	
Transmission – automatic 6-speed TE	X	
Wheels – 16" aluminum polished	X	
Window operation – power; front doors	X	



Night Layout



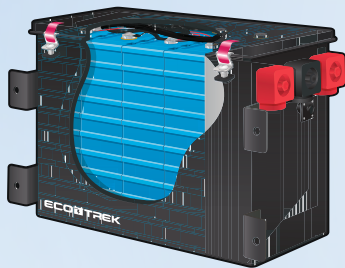


ECOTREK

A Revolutionary Power Module

Erwin Hymer Group North America has revolutionized the boondocking experience with the introduction of EcoTrek, a lithium power module that takes the worry out of battery management and lets you enjoy the RV lifestyle to the fullest.

It is available exclusively through Erwin Hymer Group North America and is available in 400, 800 and 1600 modules. The EcoTrek power module has a system to fit on all models and takes you completely off the grid for the freedom to go anywhere.



VOLTSTART

A Proprietary Auto Start Charging System

Erwin Hymer Group North America proprietary auto start charging management system is a combination remote and auto starter for your RV. Intended for use in engine generator equipped models with EcoTrek technology, the VoltStart system will automatically start your engine up to five times to recharge your batteries when they get down to a certain threshold.

The VoltStart system is a safe, keyless operation, giving you the freedom to leave your coach, without having to leave the key in the ignition. A remote FOB carried with you allows you to remote start the unit for pre-cooling or pre-heating your coach.

6-year transferable RV warranty

The 6-year unlimited mileage/km motorhome warranty covers the manufacturing of the motorhome, appliances, electronics, plumbing and EcoTrek batteries. The original manufacturer's warranty on all appliances will be applied first. This warranty excludes the complete chassis (original chassis manufacturer warranty applies, please refer to chassis manufacturers website for complete warranty details) and AGM batteries (AGM batteries have a normal one-year manufacturer's warranty.)

The 6-year unlimited mileage/km motorhome warranty is fully transferable to future owners. A warranty transfer card can be found in the back of the model owner's manual.

ProMaster Chassis Warranty

The 5-year/100,000 mile or 100,000 kilometer Powertrain Limited Warranty covering the cost of repairs on all covered powertrain components – engine, transmission and drive system for most new Ram vehicles. 3-year/36,000 mile or 60,000 kilometer limited warranty provides bumper-to-bumper coverage of your vehicle, from the body to the electrical system. Refer to chassis manufacturers website for complete details.

Two-year roadside RV assistance

With every new Hymer Aktiv, you can enjoy two years of free coverage with the Roadside RV Assistance program. This program offers a wide range of services to assist you should you need it, including towing, tire changes, jump-start services and technical support to name a few. You can now confidently take to the roads knowing we are behind you through every adventure.



ERWIN HYMER GROUP NORTH AMERICA, INC.

25 Reuter Drive, Cambridge, Ontario, N3E 1A9 | Toll-free: 1.844.GO HYMER | Fax: 519.745.1160 | Email: info@gohymer.com



/gohymer



ERWIN HYMER GROUP NORTH AMERICA, INC. reserves the right to make changes at any time, without notice, in colors, materials, equipment, specifications and models. This information is intended as a guide only; please visit www.gohymer.com for a complete list of specifications and options. Some motorhomes may be shown with equipment that is optional. Accessories shown in the photography are not included. The limited warranty on this unit covers personal use of the RV only. Rental or commercial use of RV voids the warranty on the unit.

04 - 2018

HYMER