

W

2007

WINNEBAGO

Voyage™

Voyage





35L Meteorite with Sierra Maple

New for 2007, and a Winnebago Industries exclusive, Titanium Touch Stainless finish refrigerator doors feature the stylish look of stainless steel without the maintenance. As an added benefit, you can even use your favorite refrigerator magnet.



titanium TOUCH
STAINLESS

Travel in Luxury.

The 2007 Voyage takes RV fun and comfort to new levels. From the head-turning exterior and the 7-foot-2-inch ceiling height that provides an incredibly spacious interior, to the TrueAir® residential central air conditioning with heat pump that comes standard on all models, the Voyage will quickly become your home on the road. Choose available dual-glazed, thermo-insulated windows for thermal efficiency, and with a variety of double- or triple-slideout floorplans, wood options and fabric combinations to choose from, you'll be sure to find a Voyage that's just right for you.

Every Voyage features a spacious, comfortable bedroom, thanks to the rear slideroom and walk-around queen-sized bed (king-sized bed available on the 35L). While relaxing in the bedroom, enjoy your favorite program or movie on the available 20-inch TV. Every Voyage comes standard with a 27-inch Sony® TV located in the front entertainment center. For even more entertainment options, you can add the available DVD player and satellite dish.

On the cover: 35L with Light Autumnwood Metallic.



Entertainment Is Always an Option.

The available Home Theater Sound System includes a receiver, amplifier, DVD, five speakers and a subwoofer. Add the 600-watt inverter to enjoy the sound system without shoreline or generator power.

As you prepare your favorite dishes in the galley, you'll be surrounded by upscale amenities such as solid-surface countertops and beautiful cabinetry featuring a sleek catalyzed finish. The appliances complement the galley's elegant interiors. The Magic Chef® three-burner range and a Sharp® microwave or available microwave/convection oven provide the option of cooking a big meal or a quick bag of popcorn.

WEB Select a Key Feature

The **WEB** icon designates a Winnebago Industries Key Feature. For further in-depth information and photos, use the Search Window or click on the Key Features page at winnebagoind.com.



33V Ice Tea with Washed Maple

WEB **SMARTSPACE**

The moment you step inside the Voyage you'll notice how our SmartSpace™ design philosophy makes the most of interior living areas by maximizing functionality and giving you more useable storage. For example, the hoop-base lounge chair can be placed in your favorite spot when the coach is parked, so you can kick back and catch up on some reading or watch your favorite movie.



WEB

BenchMark
FULL COMFORT DINETTE

BenchMark™

Innerspring cushions; large, easy-to-access storage areas; and a comfortable bed conversion are all part of the BenchMark full comfort dinette (not available on the 38J). A child safety-seat tether is also included.



WEB

REST EASY
MULTI-POSITION LOUNGE

Rest Easy®

This multi-position lounge changes from a sofa to a recliner with ottoman to a comfortable bed, all at the touch of a button.



Euro Lounge.

Relax in this available stylish UltraLeather® recliner with ottoman.

You're In the Driver's Seat.

The all-new dash style makes driving easy and comfortable. The steering wheel remote allows you to control the RV Radio® while your hands remain on the wheel.

The dash also features an available rearview monitor to make backing and maneuvering even easier. For added peace of mind, upgrade with side-mounted cameras. They activate with the turn signals to provide side views in the dash-mounted rearview monitor.

The in-dash workstation provides a great workspace for a computer or writing letters.



WEB

RV-RADIO®

SIRIUS You can expand your listening options by adding the Sirius® Satellite Radio package with over 120 digital channels. A complimentary six-month subscription is provided with this package (not available in Canada).



WEB

ONE PLACE systems center

OnePlace®

The OnePlace systems center allows you to check frequently used switches, gauges and controls. The PowerLine® energy management system monitors electrical usage, cycling select appliances on and off during periods of heavy use to prevent tripped circuit breakers when using 30-amp service.



WEB

TRUEAIR RESIDENTIAL CENTRAL AC

TrueAir®

TrueAir residential central air conditioning is 40 percent more efficient and 10 percent quieter than traditional roof air. TrueAir uses residential filters for better air quality and features a heat pump to take the chill off cool mornings without running the furnace.



WEB TRUELEVEL HOLDING TANK MONITORING SYSTEM

TrueLevel™

Eliminate the guesswork when it comes to tank levels, with our exclusive TrueLevel holding tank monitoring system. It incorporates detector cells that determine liquid levels from outside the tank. No probes means no more corrosion or clogging, just accurate readings, time after time.



WEB

QuickPort SERVICE CONNECTION HATCH

Service Center.

Large, color-coded labels make hookups a snap.



Hydraulic Jacks.

New for 2007, our exclusive three-position hydraulic jack controls. Operate your hydraulic jacks from the driver's seat, entrance door or, if you're already outside, from the service center. Leveling your motor home has never been more convenient.

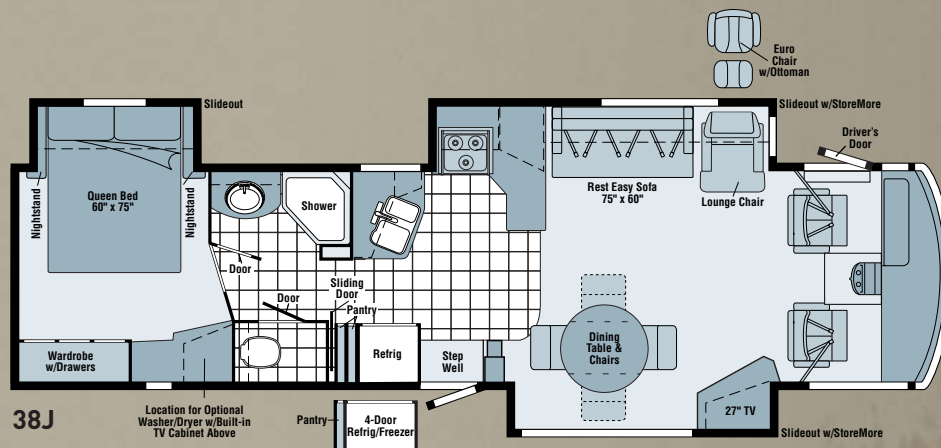
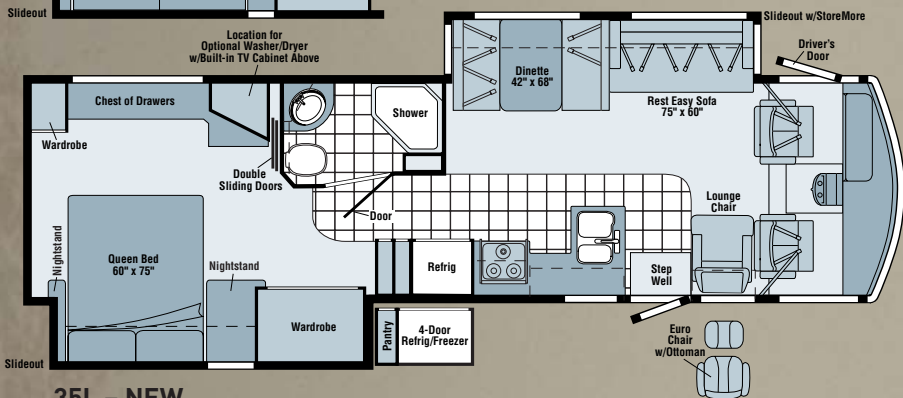
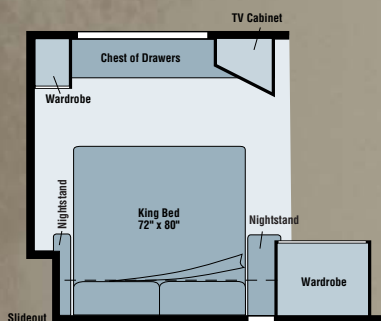
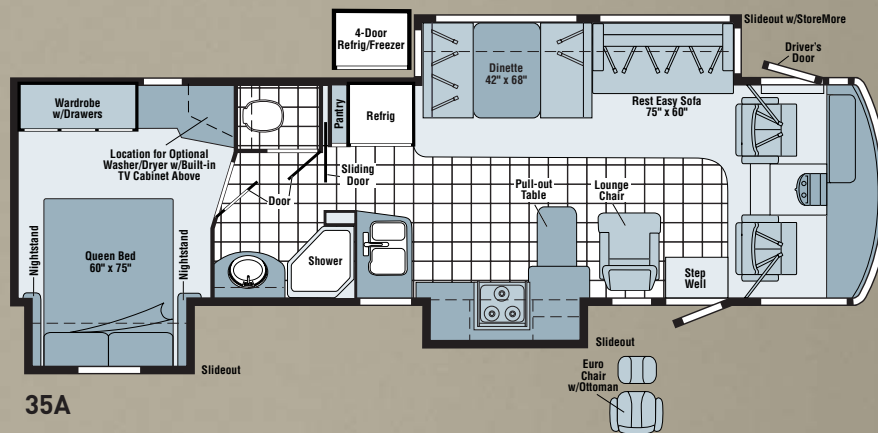
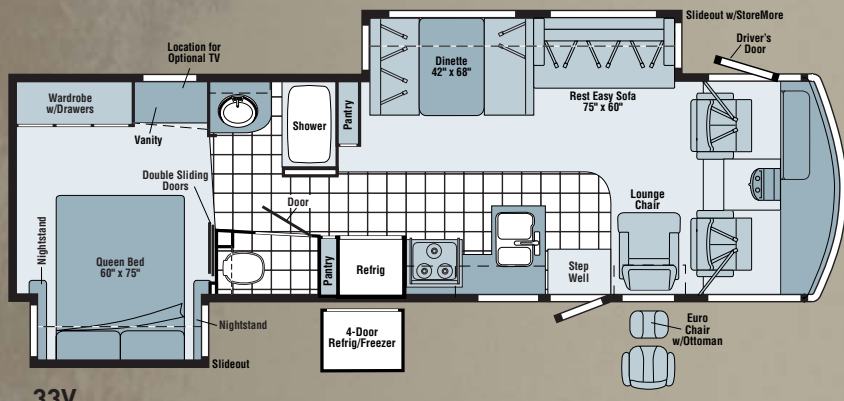


WEB

STOREMORE

StoreMore®

No need to crawl on your hands and knees to reach your stored items. The StoreMore slideout system allows spacious exterior compartments to extend with the slideroom for easy storage access.



 Carpet
  Seat Belts
  Vinyl Floorcovering

Note: Dimensions shown are for sleeping space only and may vary due to styling differences. Dashed lines denote overhead storage areas.



Ice Tea



Meteorite



Mulberry



Sierra Maple



Washed Maple



A-Main Fabric
B-Carpet
C-Accent



Light Autumnwood Metallic



Dark Titanium Metallic



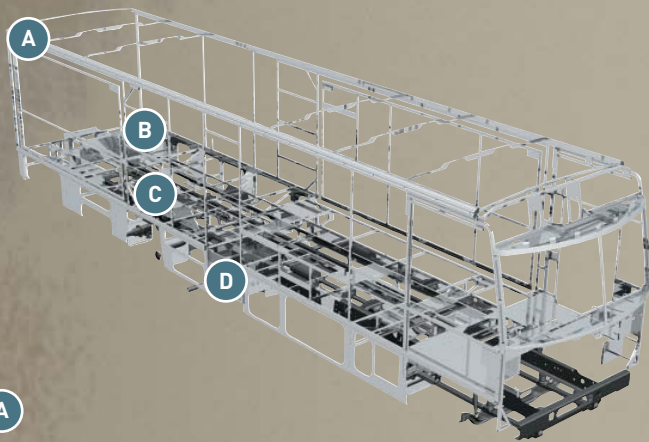
WEIGHTS & MEASURES	33V	35A	35L NEW	38J
Length	33'7"	35'10"	35'11"	38'9"
Exterior Height ¹	12'0" ^A /11'11" ^C	12'2" ^B /12'3" ^D /12'3" ^E	12'2" ^B /12'3" ^D /12'3" ^E	12'3" ^E
Exterior Width ²	8'5.5"	8'5.5"	8'5.5"	8'5.5"
Exterior Storage ^{3,4} (cu. ft.)	54.6	89.9	81.7	118.1
Awning Length	18'	20'	15'	19'
Interior Height	7'2.5"	7'2.5"	7'2.5"	7'2.5"
Interior Width	8'.5"	8'.5"	8'.5"	8'.5"
Freshwater Capacity w/Heater ⁴ (gal.)	82	84	82	84
Holding Tank Capacity – Black/Gray ⁴ (gal.)	55/43	50/75	65/49	51/53
LP Capacity ⁵ (gal.)	28	28	28	28
Fuel Capacity (gal.)	75	75	75	75
GCWR ⁷ (lbs.)	26,000 ^A /26,000 ^C	26,000 ^B /26,000 ^D /30,000 ^E	26,000 ^B /26,000 ^D /30,000 ^E	30,000 ^E
GVWR (lbs.)	20,500 ^A /20,700 ^C	22,000 ^B /22,000 ^D /24,000 ^E	22,000 ^B /22,000 ^D /24,000 ^E	24,000 ^E
GAWR – Front (lbs.)	7,500 ^A /7,500 ^C	7,500 ^B /8,500 ^D /9,000 ^E	7,500 ^B /8,500 ^D /9,000 ^E	9,000 ^E
GAWR – Rear (lbs.)	13,500 ^A /13,500 ^C	14,500 ^B /15,000 ^D /15,500 ^E	14,500 ^B /15,000 ^D /15,500 ^E	15,500 ^E
Wheelbase	208" ^A /208" ^C	228" ^B /228" ^D /228" ^E	228" ^B /228" ^D /228" ^E	248" ^E

Standard - S	Optional - O	33V	35A	35L	38J
AUTOMOTIVE/CHASSIS					
A - Ford® Chassis – 6.8L SOHC Triton® V10 362-hp, Torqshift™ 5-speed overdrive transmission, 4-wheel ABS, 130-amp. alternator, Tires 19.5"					
	S				
B - Ford Chassis – 6.8L SOHC Triton V10 362-hp, Torqshift 5-speed overdrive transmission, 4-wheel ABS, 130-amp. alternator, Tires 22.5", Wheels stylized aluminum					
		S	S		
C - Workhorse™ Chassis – 8.1L Vortec V8 340-hp, Allison® 1000 MH 6-speed overdrive transmission, 4-wheel ABS, 145-amp. alternator, Steering Wheel custom, Tires 19.5"					
	0				
D - Workhorse Chassis – 8.1L Vortec V8 340-hp, Allison 1000 MH 6-speed overdrive transmission, 4-wheel ABS, 145-amp. alternator, Steering Wheel custom, Tires 22.5"					
		0	0		
E - Workhorse Chassis – 8.1L Vortec V8 340-hp, Allison 2100 MH 6-speed overdrive transmission, 4-wheel ABS, 145-amp. alternator, Steering Wheel custom, Tires 22.5"					
		0	0	S	
Trailer Hitch ⁷ 5,000-lb. drawbar/500 lbs. maximum vertical tongue weight, fixed mount female socket, 7-pin connector, Wheel Liners stainless steel (Workhorse only on 35A and 35L)					
	S	S	S	S	
Leveling Jacks (front & rear) KwikEE®, hydraulic, manual touch pad, indicator light					
	S	S	S		
Leveling Jacks (front & rear) KwikEE® on 38J) hydraulic, automatic					
	0	0	0	S	
CAB AREA & DRIVER CONVENIENCES					
Cab Seats lumbar support, armrests, multiadjustable swivel/slide/recline, fabric, Cab Sound Control Package , Convenience Tray , Cruise Control , Door (Driver) entry, assist bar, courtesy light, TriMark® KeyOne™ System, Map Lights , Powerpoint 12-volt DC/cigarette lighter, Steering Wheel tilt w/ power-assist, Sunvisors , Trim Panels driver & passenger doors, Window (Driver) power, Window (Passenger) full-slider w/screen, Windshield Wipers intermittent, Workstation in-dash, passenger					
	S	S	S	S	
Cab Seats UltraLeather®, Cab Seat Pedestal 6-way power-assist (driver), Defroster Fans auxiliary, Monitor System rearview, black & white w/single camera & 1-way audio, Audiovox®, Video Camera System requires rearview monitor system					
	0	0	0	0	
GRAND PACKAGE					
	0	0	0	0	
Cab Seats UltraLeather, Cab Seat Pedestal 6-way power-assist (driver), Entertainment Center (Exterior) DC receptacle, AC duplex receptacle, AM/FM radio w/CD player & remote, radio antenna, speakers (2), lockable compartment, removable table, Home Theater Sound System amplifier, DVD, receiver, speakers (5), subwoofer, Memorex®, Leveling Jacks (front & rear) KwikEE® hydraulic, automatic, [HWH standard on 38J], Microwave/Convection Oven w/range fan, stainless steel, Monitor System rearview, black & white w/single camera & 1-way audio, Audiovox, Power Cord 50-amp., Roof Vent powered ventilator fan, galley, TV 20" color AC stereo w/remote, flat-face, bedroom, Water Heater 10-gallon electronic ignition, 120 VAC/LP gas w/ motoraid & auto heater, Windows dual-glazed/thermo-insulated					
	0	0	0	0	
ENTERTAINMENT					
C.B. Wire Prep 12-volt DC powerpoint, RV Radio® (Cab) AM/FM/stereo/CD player w/remote controls & weather band, Radio Power Switch main/auxiliary battery, Satellite System Ready , Telephone input & interior jack, TV 27" flat-face, color AC stereo w/remote, TV Enhancement Package antenna (amplified), 12-volt DC powerpoint, interior jacks, coax wiring, cable input, exterior antennae jack, TV shelf in bedroom, Video Selection System					
	S	S	S	S	
DVD stereo w/remote					
	0	0	0	0	
Entertainment Center (Exterior) DC receptacle, AC duplex receptacle, AM/FM radio w/CD player & remote, radio antenna, speakers (2), lockable compartment, removable table, Home Theater Sound System amplifier, DVD, receiver, speakers (5), subwoofer, Memorex®					
	0	0	0	0	
Satellite Dish Antenna Winegard®, RV digital, elevation sensing unit, manual					
	0	0	0	0	
Satellite Dish Antenna Winegard, RV digital, automatic					
	0	0	0	0	
Satellite Radio Sirius®, includes 6-month prepaid subscription (NA in Canada)					
	0	0	0	0	
TV 20" color AC stereo w/remote, flat-face, bedroom					
	0	0	0	0	
INTERIOR					
Ceiling fabric, Countertops solid-surface in galley, laminate in dinette, bath and bedroom, Cupholder(s) , Curtain front wraparound, Light decorative, Lights ceiling, incandescent w/wall switches, Lights fluorescent lounge, galley w/wall switches, Lights reading, Shades day/night pleated (lounge, dinette, & bedroom), mini blinds (galley)					
	S	S	S	S	
Windows dual-glazed/thermo-insulated					
	0	0	0	0	
FURNITURE					
BenchMark™ Full Comfort Dinette w/access to storage below, child-seat tether anchor					
	S	S	S		
Dining Table w/chairs (2) freestanding (2) folding					
				S	
Entertainment Center w/27" TV					
				S	
Lounge Chair hoop-base rocker/recliner, footrest					
	S	S	S	S	
Rest Easy® Multi-Position Lounge power recliner, throw pillows					
	S	S	S	S	

- The height of each model is measured to the top of the tallest standard feature and is based on the curb weight of a typically equipped unit. The actual height of your vehicle may vary by several inches depending on chassis or equipment variations. Please contact your dealer for further information.
- Voyage floorplans feature a wide-body design – over 96 inches. In making your purchase decision, you should be aware that some states restrict access on some or all state roads to 96 inches in body width. Before making your purchase decision, you should confirm the road usage laws in the states of interest to you.
- The load capacity of your motor home is designated by weight, not by volume, so you cannot necessarily use all available space when loading your motor home.
- Capacities are based on measurements prior to tank installation. Slight capacity variations can result due to installation applications.
- Capacities shown are tank manufacturer's listed water capacity (W.C.). Actual filled LP capacity is 80% of listing due to overfilling prevention device on tank.
- Measurements are based on the most recent information available. See your dealer for specifications.

Standard - S	Optional - O	33V	35A	35L	38J
Euro Lounge Chair (UltraLeather) w/ottoman					
	0	0	0	0	
Lounge Chair (UltraLeather) hoop-base rocker/recliner, footrest					
	0	0	0	0	
Rest Easy Multi-Position Lounge (UltraLeather) power recliner, throw pillows					
	0	0	0	0	
GALLEY					
Countertop w/flip-up extension(s), Faucet single-control, Microwave Oven w/vented range fan, Sharp® Pantries , Range Top 3-burner w/storage below, Magic Chef® Range Cover , Refrigerator/Freezer large double-door, Titanium Touch Stainless, Roof Vent nonpowered, Water Purification System cold water only					
	S	S	S	S	
Microwave/Convection Oven w/range fan, stainless steel					
	0	0	0	0	
Range 3-burner w/large oven					
	0	0	0	0	
Refrigerator/Freezer 2-door w/icemaker, Titanium Touch Stainless					
	0	0	0	0	
Refrigerator/Freezer 4-door w/icemaker, Titanium Touch Stainless					
	0	0	0	0	
Roof Vent powered ventilator fan					
	0	0	0	0	
BATH					
Cabinet (lavatory, Cabinet medicine, Faucet (Shower) dual-control w/flexible showerhead, Faucet (Lavatory) dual-control, Light shower, Lights makeup, Roof Vent powered, Shower Door textured glass					
	S	S	S	S	
BEDROOM					
Bed queen, innerspring Serta® mattress, bed lift gas springs w/underbed storage, Bedsread pillow shams, pillows, throw pillow					
	S	S	S	S	
Bed king, innerspring					
			0		
EXTERIOR					
Awning patio, Awning Rails w/rain gutters, Door entrance, separate screen door w/ shade, deadbolt lock, Entrance steps, electric w/doorjamb switch, Ladder , Light porch, Mirrors electric remote w/defrost, Mudflaps rear, front, Receptacle AC duplex, Sidewall Skin 1-piece smooth fiberglass, Storage Compartments valance panels, trunk liner, gas struts, TriMark KeyOne System, paddle latch, lights, antenna jack					
	S	S	S	S	
Awning patio, electric w/wind sensor & remote					
	0	0	0	0	
SYSTEMS					
HEATING/AC – Air Conditioner TrueAir® residential central air conditioning system w/heat pump, Automotive Heater/Air Conditioner , PowerLine® Energy Management System					
	S	S	S	S	
Furnace 35,000 BTU					
	S				
Furnace 40,000 BTU					
		S	S	S	
ELECTRICAL – Auxiliary Start Circuit, Batteries (2) (Coach) deep-cycle w/disconnect system, Battery Charge Control automatic dual, Electrical Distribution System AC & DC breaker panels, 45-amp. converter/charger (55-amp. 38J), Generator 5,500-watt, Onan® Marquis Gold,™ gas, Generator Prep gas line, 12-volt DC wiring, Generator/Shoreline Automatic Changeover Switch , OnePlace® Systems Center wall-mounted, battery condition gauge, generator hour-meter gauge, generator start/stop switch, holding tank levels, LP tank level, water heater switch & lights, water pump switch, water tank level, Service Center (Electrical) cable input, portable satellite dish hookup, 30-amp. power cord, QuickPort® Service Connection Hatch					
	S	S	S	S	
Inverter DC/AC, 600-watt, Power Cord 50-amp., Solar Panel 10-watt w/battery charger					
	0	0	0	0	
PLUMBING/LP – Drain 1" water tank, Service Center (Drainage/Water) city water hookup/ tank diverter fill, drainage valves, exterior wash station w/pump switch, QuickPort Service Connection Hatch, sewer hose 10', Tank Flushing System black tank only, Tank holding, heated compartment, Tank LP , permanent mount w/gauge, TrueLevel™ Holding Tank Monitoring System , Water Heater 6-gallon electronic ignition w/motoraid & auto heater, Water Pump demand, Water System Winterization Package bypass valve, water heater siphon tube					
	S	S	S	S	
Washer/Dryer Combination (requires 10-gallon water heater), NA w/king bed on 35L					
		0	0	0	
Washer/Dryer Prep NA w/king bed on 35L					
		S	S	S	
Water Heater 6-gallon electronic ignition, 110 VAC/LP gas w/motoraid & auto heater, Water Heater 10-gallon electronic ignition, 110 VAC/LP gas w/motoraid & auto heater					
	0	0	0	0	
SAFETY					
Assist Bar interior, Assist Handle exterior, Bumpers front & rear, Child-Seat Tether Anchor (NA 38J) , Detectors/Alarms LP leak, smoke, carbon monoxide, Fire Extinguisher 10 BC, Fog Lamps , Ground Fault Interrupter , Lights high-mount brakelamps, Lights courtesy, Lights daytime running lamps, Seat Belts 3-point, adjustable, Window escape, Windshield laminated safety glass					
	S	S	S	S	
WARRANTY ⁸					
12-month/15,000-mile basic limited warranty ⁹ , 36-month/36,000-mile limited warranty on structure ⁹ , 10-year limited parts & labor warranty on roof skin ⁹					
	S	S	S	S	

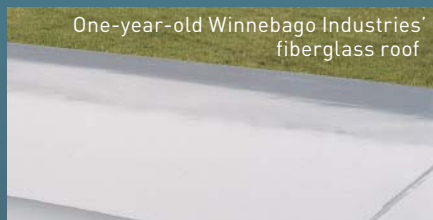
- Actual towing capacity is dependent on your particular loading and towing circumstances, which includes the GVWR, GAWR and GCWR, as well as adequate trailer brakes. Please refer to the Operator's Manual of your vehicle for further towing information.
- See separate chassis warranty.
- See your dealer for complete warranty information.
- Not all items available in combination. See your dealer for details. NA - Not Available.
- Winnebago Industries® continuing program of product improvement makes specifications, equipment, model availability and prices subject to change without notice. Comparisons to other motor homes are based on the most recent information available at printing.



SUPERSTRUCTURE® is the term given to Winnebago Industries' structural motor home design and construction. Rather than a single component, it is the culmination of design integration that incorporates steel and aluminum substructures; composite-design laminated floor risers; interlocking joint technology; and Thermo-Panel® floor, roof and sidewalls to form a high-strength, durable vehicle body.

Thermo-Panel manufacturing combines a durable exterior panel with welded aluminum support substructures. The substructures are embedded in a high-density, block-foam insulation core to create a strong, durable, yet lightweight sidewall. Just another Winnebago Industries' invention.

- A** Interlocking joint construction utilizes advanced extruded aluminum structural components to create integrated floor-to-sidewall and sidewall-to-roof joints. This design effectively distributes the weight of the walls and roof, making a stronger and more durable body than competitor designs that rely on screws to carry the weight.
- B** The foundation substructure assembly is precision-aligned to maximize strength and cross-coach support as well as durability.
- C** Laminated risers feature a welded aluminum core for improved strength and provide a stable base for the floor structure and storage compartments.
- D** Critical steel components are treated using an advanced electrodeposition coating process that provides superior corrosion protection.



One-year-old Winnebago Industries' fiberglass roof



One-year-old competitor's rubber roof

BUILT TO A HIGHER STANDARD.

The 2007 Voyage features a crowned, one-piece fiberglass roof skin backed with a 10-year limited parts-and-labor roof skin warranty. Fiberglass offers superior strength, attractiveness and durability compared to rubber roofs found on many competitive models. Over time, rubber roofs are susceptible to chalking, streaking and degradation, and have less puncture and tear resistance than fiberglass.



Take a Tour We're proud of our process, our state-of-the-art facilities and the people who make Winnebago Industries number one. We invite you to visit our factory in Forest City, Iowa, for a firsthand look at the dedication and technology behind every motor home we build.



Recognized Quality The Recreation Vehicle Dealer Association annually rates RV manufacturers and awards the Quality Circle award to manufacturers who provide exceptional products, service and support. Winnebago Industries is proud to be the only manufacturer to receive this award every year since its inception.



Committed to Service We back our motor homes with the industry's best service after the sale.

- 12-month/15,000-mile basic limited warranty
- 36-month/36,000-mile limited warranty on structure
- Standard 10-year limited parts-and-labor roof skin warranty
- Complimentary 24-hour roadside assistance program
- TripSaver Fast Track Parts. TripSaver guarantees that in-stock warranty parts ship directly to your dealer within 24 hours.
- National dealer service network

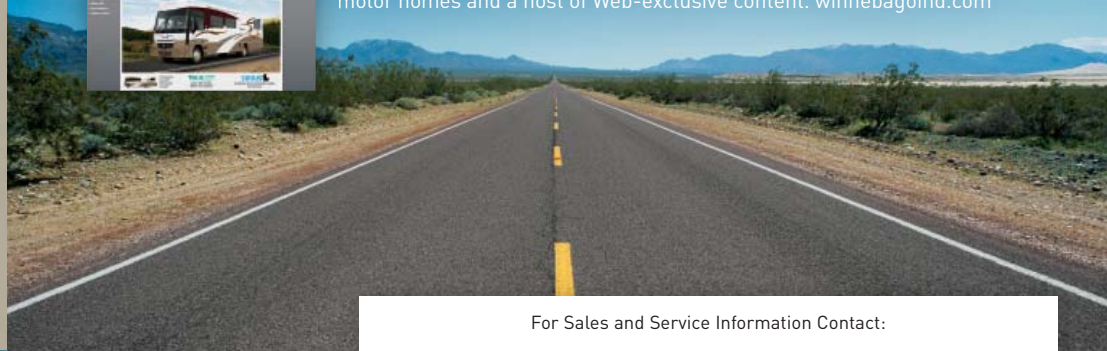


WIT Club Winnebago owners are like family. Joining the Winnebago-Itasca Travelers is a great way to meet and travel with other Winnebago enthusiasts. Members enjoy:

- Caravans and rallies
- Local and state group activities
- RV travel benefits



Visit the Web Visit us on the Web for more information on all of our motor homes and a host of Web-exclusive content. winnebagoind.com



For Sales and Service Information Contact:

Built proudly by



NYSE listing: WGO