

PREMIER FIFTH WHEELS
AND TRAVEL TRAILERS

COUGAR





**Keystone RV
Company**

ICONIC COMPANY

**COLE
DAVIS**

Founder, Keystone RV Company
Started Keystone RV with 110 employees
and 1 production line in 1996.

OUR

Keystone a company on a mission



THE MISSION

When Cole Davis founded Keystone RV in 1996 his vision was clear: Build a quality RV loaded with features priced thousands less than other RVs on the market. To accomplish his goal, Cole built a strong team, focused on keeping overhead low, and empowered employees closest to the customer to make decisions. Within a few short months after opening the doors, Keystone produced its very first camper. Delivering big on quality, features and value, the public fell in love and a star was born.

As customers appetite skyrocketed, new Keystone models were added to satisfy growing customer demand. Along with this tremendous growth came the need for expanded production. To meet this need, more manufacturing plants were built and staffed. By the beginning of 2000, Keystone was leading the industry in fifth wheel and trailer sales. Today, Keystone RV Company has grown to encompass over 1 million square feet of manufacturing space with facilities in Goshen, Indiana and Pendleton, Oregon. While Keystone is no longer the small "start up" we once were, our mission has remained true to Cole's vision—"Do the job right and make sure we deliver a quality product every time."

✓ **MOST RELIABLE PRODUCTS IN THE INDUSTRY**

✓ **QUALITY, PROCESS DRIVEN MANUFACTURING**

✓ **CONSUMER FOCUSED PRODUCTS AND SERVICE**

✓ **MOST "DEALER SATISFACTION INDEX" AWARDED RECIPIENT**

COUGAR by Keystone

ICONIC BRAND



At the heart of Cougars philosophy is the belief that if we listen to our customers, and execute accordingly, the crucial combination of quality, design, weight, luxury and price, is to offer an unparalleled product. A product that will provide the finest means for families, both young and old, to create memories year after year! From growing families, to full timers, Cougar vows to provide the top travel trailer and fifth wheel floor plans and features to suit each dynamic, and maximize their unique camping experience. Growing with Cougar from a mid-level travel trailer, to a 40 foot fifth wheel, is our forte! By avoiding fads and trends, we have been able to focus more on innovation, quality, style and affordability. These attributes are what our customers rely on, and appreciate, and are the hallmarks of America's #1 selling brand. Cougar is the choice of yesterday, today and tomorrow!

Cougar remains focused on the growing popularity of lightweight luxury vehicles, and the ease of tow ability. We have ongoing commitment to create a stress free journey for all who choose to explore with us. We make it our goal that our current customers choose us for each of their subsequent voyages. Come grow with us and explore the country in a Cougar RV! Where you are always a step ahead, and luxury and lightweight meet!



368MBI SHOWN IN TWIG DECOR



Keystone RV
Company

www.keystonerv.com/Cougar

COUGAR by Keystone MID-PROFILE FIFTH WHEELS

36GRDS SHOWN IN TWIG DECOR



BEST-IN-CLASS ADVANTAGES

- ✓ ROAD ARMOR WHEEL SUSPENSION FOR 360 VIBRATION PROTECTION
- ✓ AUTOMATIC LEVELING SYSTEM FOR QUICK AND EASY UNIT HOOKUP
- ✓ COUGAR EZ CAMP REMOTE POWERS SLIDES, AWNING AND MORE
- ✓ AUTOMOTIVE CLEAR COAT PAINTED FRONT CAP WITH PATENTED "HITCH VISION" BACKUP MIRROR
- ✓ HEATED AND ENCLOSED INSULATED UNDERBELLY FOR EXTENDED SEASON COMFORT
- ✓ INTERNAL AND EXTERNAL LED LIGHTS INCLUDING MOTION SENSOR LIGHTS FOR CONVENIENCE
- ✓ OVERSIZED BAGGAGE DOORS WITH UNOBSTRUCTED PASS-THROUGH STORAGE
- ✓ OVERSIZED PANORAMIC WINDOWS THROUGHOUT
- ✓ BED-SLIDE WITH KING BED OPTION (ALL MODELS)
- ✓ 12 CU. FT. 4 DOOR GAS/ELECTRIC REFRIGERATOR (ALL MODELS)
- ✓ OVERSIZE RESIDENTIAL MICROWAVE
- ✓ INNOVATIVE PIVOT HINGE BATHROOM DOORS
- ✓ OPTIONAL SMART-SLIDE HARDWOOD DINING TABLE WITH 4 CHAIRS
- ✓ 30"X50" RESIDENTIAL SIZE SHOWER (MOST MODELS)
- ✓ EXCLUSIVE SEAMLESS DYNASPAN FLOOR DECKING WITH 25 YEAR WARRANTY
- ✓ RESIDENTIAL INFLOOR HEAT DUCTING FOR MAXIMUM EFFICIENCY
- ✓ 81 GALLON FRESH WATER CAPACITY

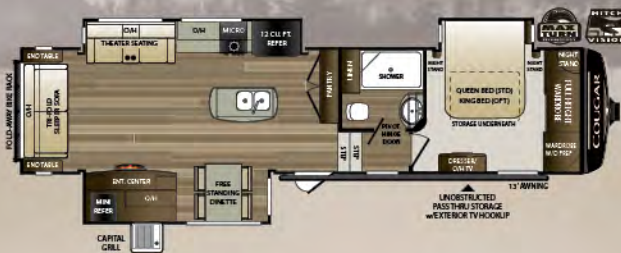
FLOOR PLANS



WEIGHT 10055 **LENGTH** 35' 4" **310RLS**



WEIGHT 10195 **LENGTH** 35' 6" **311RES**



WEIGHT 10640 **LENGTH** 37' 2" **338RLK**



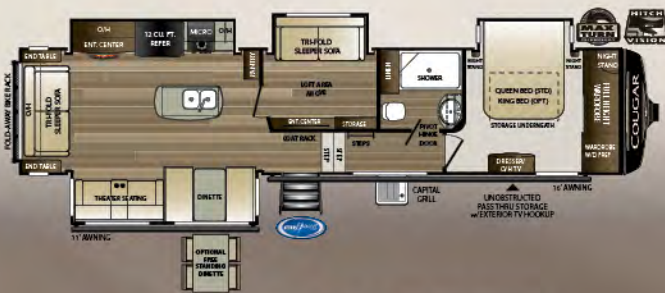
WEIGHT 10795 **LENGTH** 38' 1" **344MKS**



WEIGHT 11230 **LENGTH** 40' 1" **366RDS**



WEIGHT 11025 **LENGTH** 40' 1" **367FLS**



WEIGHT 11535 **LENGTH** 40' 1" **368MBI**



WEIGHT 11310 **LENGTH** 40' 2" **369BHS**

COUGAR *EASTERN* HALFTON *FIFTH WHEELS*

30RLS SHOWN IN TWIG DECOR



BEST-IN-CLASS ADVANTAGES

- ✓ **FOLDING REAR ACCESSORY RACK FOR BIKE AND REAR TRANSPORT/STORAGE**
- ✓ **ROAD ARMOR WHEEL SUSPENSION FOR 360 VIBRATION PROTECTION**
- ✓ **EXTRA LARGE UNOBSTRUCTED EXTERIOR PASS-THRU STORAGE**
- ✓ **AUTOMOTIVE CLEAR COAT PAINTED FRONT CAP WITH PATENTED "HITCH VISION" BACKUP MIRROR**
- ✓ **SLAM LATCH BAGGAGE DOORS WITH AUTOMOTIVE WEATHER SEAL**
- ✓ **POWER STABILIZER JACKS OR OPTIONAL AUTOMATIC LEVELING SYSTEM FOR QUICK AND EASY UNIT HOOKUP**
- ✓ **INNOVATIVE PIVOT HINGE BATH DOOR**
- ✓ **SOLID SURFACE THERMO FOIL COUNTERTOPS THROUGHOUT**
- ✓ **22" GLASS TOP COOKTOP AND OVEN**
- ✓ **15,000 BTU AIR CONDITIONER WITH OPTIONAL BEDROOM AIR CONDITIONER**
- ✓ **DUAL DUCTED "BEST IN CLASS" RACE TRACK AIR CONDITIONER SYSTEM**
- ✓ **35,000 BTU FURNACE - ALL MODELS!**
- ✓ **ALUMINUM WHEELS WITH E RATED TIRES**
- ✓ **WALKABLE ROOF WITH REAR WALL LADDER**
- ✓ **60 GALLON FRESH WATER CAPACITY**

FLOOR PLANS



WEIGHT 7420
LENGTH 29' 7"

25RES



WEIGHT 6990
LENGTH 29' 4"

26RLS



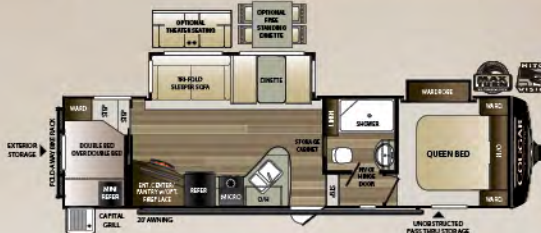
WEIGHT 7970
LENGTH 31' 4"

27RLS



WEIGHT 8205
LENGTH 31' 4"

28SGS



WEIGHT 8065
LENGTH 33' 7"

29RDB



WEIGHT 8730
LENGTH 33' 7"

29RKS



WEIGHT 8565
LENGTH 33' 7"

29RES



WEIGHT 8825
LENGTH 34' 3"

30RLS



WEIGHT 10067
LENGTH 38' 1"

32BHS



WEIGHT 9025
LENGTH 36' 2"

32DBH

COUGAR *ULTRA-LITE "PLUS"*

HALF-TON TRAVEL TRAILERS

32RLJ SHOWN IN CASHMERE DECOR



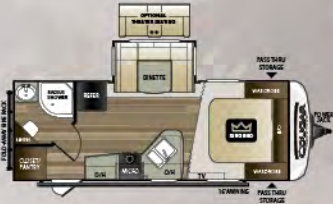
Ground Control™ II
Automatic Leveling System



ULTRA-LITE "PLUS" ADVANTAGES

- ✓ 50" LIVING ROOM TV (MOST MODELS)
- ✓ KING BED STANDARD
- ✓ OVERSIZE PANORAMIC WINDOWS THROUGHOUT
- ✓ UPGRADED PULL-OUT FAUCET WITH STAINLESS STEEL UNDER MOUNT SINK
- ✓ SOLID SURFACE THERMO FOIL COUNTERTOPS
- ✓ INTERIOR AND EXTERIOR LED LIGHTS
- ✓ ARCHED CEILING FOR EXTRA HEAD ROOM
- ✓ STANDARD 15,000 BTU AIR CONDITIONER
- ✓ 35,000 BTU FURNACE
- ✓ PORCELAIN TOILET
- ✓ UPGRADED EXTERIOR "CAPITAL GRILL" COOKTOP (MOST MODELS)
- ✓ 30 LB. LP BOTTLES
- ✓ 60 GALLON FRESH TANK CAPACITY
- ✓ FOLDING REAR ACCESSORY RACK FOR BIKE AND REAR TRANSPORT/STORAGE
- ✓ GELCOAT FIBERGLASS FRONT CAP
- ✓ AUTOMATIC LEVELING JACKS FOR EASY SETUP (MOST MODELS)
- ✓ SLAM LATCH BAGGAGE DOORS
- ✓ ALUMINUM WHEELS WITH E RATED TIRES
- ✓ WALKABLE ROOF WITH REAR WALL LADDER
- ✓ CONVENIENCE CENTER WITH BLACK TANK FLUSH AND SPRAY PORT

FLOOR PLANS



WEIGHT 5525 **LENGTH** 26' 8" **22RBS**



WEIGHT 5790 **LENGTH** 27' 7" **24RBS**



WEIGHT TBD **LENGTH** TBD **26RBS**



WEIGHT TBD **LENGTH** TBD **26RKS**



WEIGHT 6630 **LENGTH** 32' **27SAB**



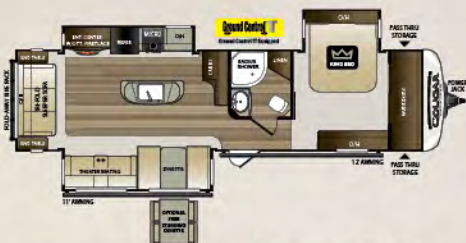
WEIGHT TBD **LENGTH** TBD **27RES**



WEIGHT 7570 **LENGTH** 33' 9" **29RLD**



WEIGHT 6870 **LENGTH** 34' 9" **29BHS**



WEIGHT 8315 **LENGTH** 36' 6" **32RLI**



WEIGHT TBD **LENGTH** TBD **32RDB**



WEIGHT 7980 **LENGTH** 35' 10" **33MLS**



WEIGHT 8650 **LENGTH** 37' 7" **33SAB**



WEIGHT 8480 **LENGTH** 38' 1" **34TSB**

SPECIFICATIONS

COUGAR by Keystone MID-PROFILE FIFTH WHEELS

MODEL	SHIPPING WEIGHT	CARRYING CAPACITY	HITCH	LENGTH*	EXTERIOR WIDTH	HEIGHT	FRESH WATER	WASTE WATER	GRAY WATER	LPG	AWNING(S)
310RLS	10055	2395	2055	35' 4"	8'	13' 2"	81	38	76	60	13'
311RES	10195	2205	2015	35' 6"	8'	13' 2"	81	38	76	60	13'/11'
338RLK	10640	1850	2095	37' 2"	8'	13' 2"	81	38	76	60	13'/11'
344MKS	10795	1765	2165	38' 1"	8'	13' 2"	81	38	76	60	14'/11'
366RDS	11230	2760	1990	40' 1"	8'	13' 2"	81	38	76	60	20'
367FLS	11025	2975	2545	40' 1"	8'	13' 2"	81	38	76	60	20'
368MBI	11535	2445	1980	40' 1"	8'	13' 2"	81	38	76	60	16'/11'
369BHS	11310	2690	2065	40' 2"	8'	13' 2"	81	38	76	60	13'/11'

COUGAR HALF-TON EASTERN FIFTH WHEELS

MODEL	SHIPPING WEIGHT	CARRYING CAPACITY	HITCH	LENGTH*	EXTERIOR WIDTH	HEIGHT	FRESH WATER	WASTE WATER	GRAY WATER	LPG	AWNING(S)
25RES	7420	2580	1535	29' 7"	8'	12' 1"	60	30	60	60	20'
26RLS	6990	3010	1280	29' 4"	8'	12' 1"	60	30	60	60	13'
27RLS	7970	2450	1625	31' 4"	8'	11' 11"	60	30	60	60	10'
28SGS	8205	2075	1485	31' 4"	8'	11' 11"	60	30	60	60	10'
29RDB	8155	2100	8065	33' 7"	8'	11' 11"	60	30	60	60	20'
29RKS	8730	1740	1670	33' 7"	8'	11' 11"	60	30	60	60	20'
29RES	8565	1725	1490	33' 7"	8'	11' 11"	60	30	60	60	10'/11'
30RLS	8825	2175	1690	34' 3"	8'	13' 2"	60	30	60	60	10'/11'
32BHS	TBD	TBD	TBD	TBD	TBD	TBD	TBD	TBD	TBD	TBD	TBD
32DBH	9025	2475	1860	36' 2"	8'	13' 2"	60	30	60	60	14'/11'

COUGAR HALF-TON ULTRA-LITE "PLUS" TRAVEL TRAILERS

MODEL	SHIPPING WEIGHT	CARRYING CAPACITY	HITCH	LENGTH*	EXTERIOR WIDTH	HEIGHT	FRESH WATER	WASTE WATER	GRAY WATER	LPG	AWNING(S)
22RBS	5525	1675	620	26' 8"	8'	11' 4"	43	30	30	60	16'
24RBS	5750	2050	775	27' 7"	8'	11' 4"	43	30	30	60	17'
26RBS	TBD	TBD	TBD	TBD	TBD	TBD	TBD	TBD	TBD	TBD	TBD
26RKS	TBD	TBD	TBD	TBD	TBD	TBD	TBD	TBD	TBD	TBD	TBD
27SAB	6630	2170	1015	32'	8'	11' 4"	60	30	60	60	17'
27RES	TBD	TBD	TBD	31' 6"	8'	11' 4"	60	30	60	60	17'
29RLD	7570	1930	1070	33' 9"	8'	11' 1"	60	38	60	60	20'
29BHS	6870	1930	810	34' 9"	8'	11' 4"	60	30	60	60	20'
32RLI	8315	2185	1165	36' 6"	8'	11' 4"	60	30	60	60	12'/11'
32RDB	TBD	TBD	TBD	TBD	TBD	TBD	TBD	TBD	TBD	TBD	TBD
33MLS	8075	2425	1110	35' 10"	8'	11' 4"	60	30	60	60	12'
33SAB	8650	1850	1175	37' 7"	8'	11' 4"	60	30	60	60	12'/8'
34TSB	8480	2020	1150	38' 1"	8'	11' 4"	60	30	60	60	8'/11'

STANDARDS & OPTIONS



**MID-PROFILE
FIFTH WHEELS**



**HALF-TON
FIFTH WHEELS**



**ULTRA-LITE "PLUS"
TRAVEL TRAILERS**

CAMPING IN STYLE PACKAGE
Champagne Laminated Side Walls with 5 Sided Aluminum Superstructure
3/8" Walkable Roof Decking
Fiberglass Front Cap W/ Hitch Vision & LED Lights
Full Size Spare Tire
Cougar Vintage Maple Glazed Hardwood
Cabinet Doors with Residential Hardware
12,000 BTU Rapid Recovery 6 Gallon
Rapid Recovery Gas/Electric Water Heater
16" Aluminum Wheels with 10 Ply Tires
Battery Disconnect Switch
LED Interior and Exterior Lighting
Easy Care Aluma-Tread Folding Triple Entry Step
Friction Hinge Entry Door
COUGAR ANNIVERSARY PACKAGE
12 Cubic ft. Refrigerator
1.6 Cubic ft. Microwave Upgrade
Washer/Dryer Prep
21" Drop In Range w/ Piezo Ignition and Glass Stove Top Cover
LG Solid Surface Counter Top Upgrade In Galley
Gourmet Stainless Steel Under Mount Sink with Upgraded Chef's Faucet with Sprayer
Folding Exterior Bike/ Storage Rack with 225LB Capacity
Upgraded Road Armour Suspension Kit
COUGAR COMFORT PACKAGE
15,000 BTU Ducted Air Conditioner
50 Amp Service, Pre-Wired and Braced for Ducted Bedroom Air Conditioner Option
35K BTU Ducted Furnace
Dual 30LB LP Tanks
1000 CFM 4 Speed Maxx Air Exhaust Fan with Rain Sensor and Wall Mounted Controls
DELUXE ENTERTAINMENT/ TECHNOLOGY PACKAGE
50" LED High Definition TV in Living Area
32" LED High Definition TV in Bedroom
12 Volt AM/FM/CD/DVD/MP3/Bluetooth Player w/HDMI ARC Control
Worry Free Omni Directional Digital TV Antenna with Booster
Exterior TV Hookup with TV Bracket
48" Real Feel 5500 BTU Electric Fireplace with Thermostat Control and Remote
Furrion Backup/Observation Camera Prep
Furrion Portable Solar Panel Prep
12 Volt USB Charging center
Cougar Quick Camp Multifunction Remote
POLAR PACKAGE PLUS
Forced-Air Heated and Enclosed Underbelly
Astrofoil Insulated Slide Floors
Astrofoil Insulated Underbelly
Enclosed Dump Valves
OPTIONAL FEATURES
70 X 80 King Size Bed (70x74 367FLS)
13.5BTU Bedroom A/C (Ducted) With Thermostat
Free Standing Dinette and Chairs (Mandatory on 338RLK)
Dual Pane Frameless Windows
Theater Seats IPO Tri-Fold (369BHS Only)
CSA Construction

CAMPING IN STYLE PACKAGE
Champagne Laminated Side Walls with 5 Sided Aluminum Superstructure
3/8" Walkable Roof Decking
Fiberglass Front Cap W/ Hitch Vision & LED Lights
Full Size Spare Tire
Cougar Vintage Maple Glazed Hardwood
Cabinet Doors with Residential Hardware
12,000 BTU Rapid Recovery 6 Gallon
Rapid Recovery Gas/Electric Water Heater
15" Aluminum Wheels with 10 Ply Tires
Battery Disconnect Switch
LED Interior and Exterior Lighting
Easy Care Aluma-Tread Folding Triple Entry Step
Friction Hinge Entry Door
HALF TON FW ANNIVERSARY PACKAGE
8 Cubic ft. Refrigerator
.9 Cubic ft. Microwave
21" Drop In Range w/ Piezo Ignition and Glass Stove Top Cover
Foil Wrap Seamless Galley and Lavatory Counter tops
Gourmet Stainless Steel Under Mount Sink with Upgraded Chef's Faucet with Sprayer
Folding Exterior Bike/ Storage Rack with 225LB Capacity
Cougar Quick Camp Multifunction Remote
Upgraded Road Armour Suspension Kit
HALF TON FW COMFORT PACKAGE
15,000 BTU Ducted Air Conditioner
50 Amp Service, Pre-Wired and Braced for Ducted Bedroom Air Conditioner Option
35K BTU Ducted Furnace
Dual 30LB LP Tanks
POLAR PACKAGE
Forced-Air Heated and Enclosed Underbelly
Astrofoil Insulated Slide Floors
Enclosed Dump Valves
OPTIONAL FEATURES
Electric Rear Stabilizing Jacks
Electric 4 Point Levelling System (NA 26RLS)
Dual Pane Frameless Windows
13.5BTU Bedroom A/C (Ducted) With Thermostat
Free Standing Dinette and Chairs
Fireplaces (NA 25RES, 26RLS)
Theater Seat IPO Tri-Fold (25RES, 29RDB Only)
Theater Seat IPO Recliners (29RES Only)
CSA Construction

CAMPING IN STYLE PACKAGE
Champagne Laminated Side Walls with 5 Sided Aluminum Superstructure
3/8" Walkable Roof Decking
Fiberglass Front Cap W/ Hitch Vision & LED Lights
Full Size Spare Tire
Cougar Vintage Maple Glazed Hardwood
Cabinet Doors with Residential Hardware
12,000 BTU Rapid Recovery 6 Gallon
Rapid Recovery Gas/Electric Water Heater
15" Aluminum Wheels with 10 Ply Tires
Battery Disconnect Switch
LED Interior and Exterior Lighting
Easy Care Aluma-Tread Folding Triple Entry Step
Friction Hinge Entry Door
HALF TON TT ANNIVERSARY PACKAGE
8 Cubic ft. Refrigerator
.9 Cubic ft. Microwave
21" Drop In Range w/ Piezo Ignition and Glass Stove Top Cover
Foil Wrap Seamless Galley and Lavatory Counter tops
Gourmet Stainless Steel Under Mount Sink with Upgraded Chef's Faucet with Sprayer
Folding Exterior Bike/ Storage Rack with 225LB Capacity
HALF TON TT COMFORT PACKAGE
15,000 BTU Ducted Air Conditioner
35K BTU Ducted Furnace
Dual 30LB LP Tanks
POLAR PACKAGE
Forced-Air Heated and Enclosed Underbelly
Astrofoil Insulated Slide Floors
Enclosed Dump Valves
OPTIONAL FEATURES
Electric Rear Stabilizing Jacks (Mandatory 22RBS, 24RBS Only)
Automatic Levelling System (Mandatory All Models Except 22RBS, 24RBS)
Dual Pane Frameless Windows
50 Amp Service/Wire and Brace for 2nd AC (N/A 22RBS, 24RBS) (Mandatory: 26RKS, 29RLK, 32RLI, 33SAB, 33MLS, 34T5B) (Optional: 26RBS, 27SAB, 27RES, 29RLD, 29BHS)
13.5 BTU A/C (Bedroom, Non- Ducted) 50 Amp Required
Fireplace (26RKS, 32RLI, 29RLK, 32RLI, 33SAB, 33MLS, 34T5B)
Free Standing Dinette and Chairs
Theater Seat IPO Tri-Fold (26RBS, 26RKS, 27RES, 29BHS, 32RDB, 34T5B, Only)
Theater Seat IPO Recliners (33SAB Only)
Theater Seats IPO Dinette (22RBS, 24RBS Only)
CSA Construction

Standard features and options are subject to change without notice.

DECOR OPTIONS

CASHMERE



TWIG



COUGAR



STAY IN TOUCH



Cougar is always just a touch away. You'll find 360 virtual tours, location of your nearest dealer, photos, videos and all of the latest information about Cougar on our easy to navigate website. Everything you need can be accessed anytime, day or night, from home or on the road. You can also find us on the Keystone RV facebook.

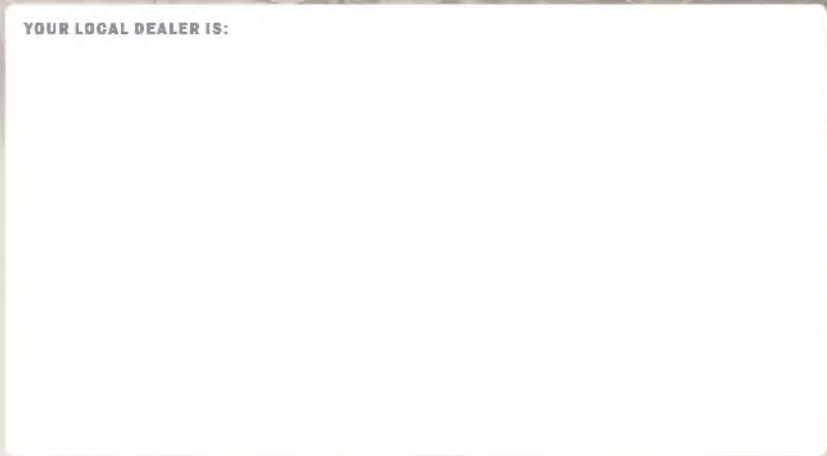


BUY LOCALLY

PURCHASING YOUR RV LOCALLY

It's up to you where you purchase your new Cougar, but may we suggest your local dealer? Not only does it help your local economy and provide jobs, but it will also give you an opportunity to develop a service relationship with someone that will come to know you and your coach. Congratulations on finding the best built, best equipped and best value in the industry.

YOUR LOCAL DEALER IS:



COUGAR
by Keystone
www.keystonerv.com/Cougar



Go RVing.



DISCLAIMER: Product information is as accurate as possible as of the date of publication of this brochure. All features, floor plans, and specifications in this brochure are subject to change without notice. Please also consult Keystone's web site at www.keystonerv.com for more current product information and specifications. Tow Vehicle Disclaimer. CAUTION: Owners of Keystone recreational vehicles are solely responsible for the selection and proper use of tow vehicles. All customers should consult with a motor vehicle manufacturer or their dealer concerning the purchase and use of suitable tow vehicles for Keystone products. Keystone disclaims any liability or damages suffered as a result of the selection, operation, use or misuse of a tow vehicle. KEYSTONE'S LIMITED WARRANTY DOES NOT COVER DAMAGE TO THE RECREATIONAL VEHICLE OR THE TOW VEHICLE AS A RESULT OF THE SELECTION, OPERATION, USE OR MISUSE OF THE TOW VEHICLE. *REFERENCE KEYSTONE RV COMPANY OWNERS MANUAL FOR LIMITED WARRANTY DETAILS. *Length is defined as the distance from the centerline of hitch pin/coupler to rear bumper of trailer.



SEPTEMBER 2017