

CATALINA

LEGACY EDITION

FREE

STARLIGHT
SYSTEM
DETAILS
INSIDE!





At home on the road.





333RETS BATHROOM



333RETS BEDROOM

The **333RETS** is a rear living couples coach. This unique layout includes a more functional living room with the entertainment center closer to the seating, it also features numerous windows that let in an abundance of natural light. The corner kitchen design offers more countertop space than similar competitive floorplans.



333RETS KITCHEN





323BHDS CK BUNKROOM



**Thoughtful
family design.**



323BHDS CK CAMPERS KITCHEN





Equipped for comfort.



The **283RKS** is a great couples coach. With abundant cabinet storage and countertop space, it truly gives you an “at home” feel. The entertainment area is ideally situated for conversation and comfortability, also offering several large windows for natural light and enjoying the landscape. The spacious bedroom features a walk-around queen bed, dual nightstands, and plenty of storage.



283RKS BEDROOM



283RKS KITCHEN STORAGE

Construction Features

- DIAMOND PLATE ROCK GUARD 1
- FLOOR STUDS 12"-16" ON CENTER 2
- 6 WAY R-7 ECO-BATT INSULATION 3
- CONGOLEUM LINOLEUM 4
- SEWER HOSE STORAGE INTEGRATED INTO THE REAR BUMPER) 5
- 13.5K BTU AIR CONDITIONER 6
- SINGLE PIECE ROOF COVERING 7
- 3/8" ROOF DECKING (FULL WALK-ON) 8
- 5" BOWED TRUSS ROOF RAFTERS 9
- SMOOTH, AERODYNAMIC ALUMINUM FRONT END 10
- .030 ALUMINUM TRIM SKIRT 11
- PLATINUM .024 ALUMINUM SIDING 12
- I-BEAM POWDER-COATED FRAME 13



CATALINA CONSTRUCTION

At Catalina we are proud of the quality that Coachmen has proven for over 52 years. We are committed and excited about continuing that superior level of construction and quality that Coachmen Catalina stands for. We achieve this not only through the use of quality materials, but through our skilled teams that care, focus, and contribute in all stages of our manufacturing process.



WIRELESS REAR VISION CAMERA PREP (CAMERA NOT INCLUDED)



OVERSIZED EXTERIOR BAGGAGE DOOR



RADIUS TRIPLE ENTRY STEP (DOUBLE NON SLIDE MODELS)



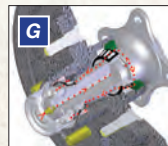
ABS BOTTLE COVER



FOUR (4) STABILIZER JACKS STANDARD ON ALL MODELS (MOST COMPETITORS OFFER THIS AS AN OPTION NOT A STANDARD)



CATALINA'S EXCLUSIVE TIRE AND RIM PACKAGE INCLUDES: RADIAL TIRES, POLISHED ALUMINUM FENDER SKIRTS AND E-COAT MAINTENANCE FREE RIMS



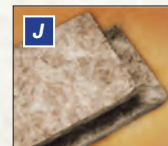
SUPERLUBE™ AXLES FOR FAST AND EASY LUBRICATION



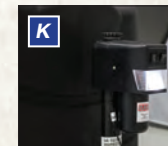
G20 RATED TINTED BLACK FRAMED WINDOWS WITH SAFETY GLASS



5/8" TONGUE IN GROOVE PLYWOOD DECKING GLUED AND STAPLED TO THE FLOOR STUDS- NOT OSB



FULL 6 SIDED R-7 ECO-BATT INSULATION. THIS IS A NEW AND SUSTAINABLE TECHNOLOGY



POWER TONGUE JACK

CATALINA SUPERIOR BENEFITS



AIR TIGHT

Seal-Tech Test. We check ALL of our coaches for water leaks by pressurizing the unit and then using a Seal-Tech spray on every part of the unit to identify any problem areas. (We find the problem areas, so you don't have to.)



CABINETRY

All of our craftsman are thoroughly trained to use a framing table with jigs and clamps. This ensures that the cabinets are built to extremely tight tolerances for tight and secure cabinetry that will last for years. This method requires real wood styles, not MDF.



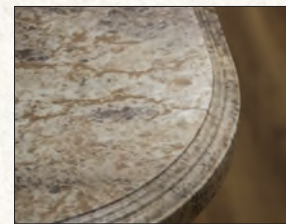
ELECTRICAL TESTING

A thorough electrical check makes sure that all electrical components are in working order, and that no electrical connections have been compromised during construction.



FLOORING

The floor is the base and key component of your RV. Therefore, we refuse to build anything but the best. Beginning with building the frame on 12"-16" centers, and bolting as well as gluing the 5/8" tongue and groove plywood, our methods and materials set us apart from the competition.



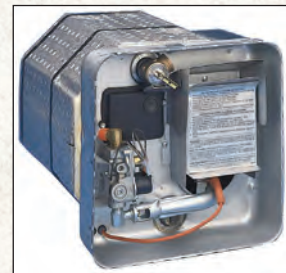
COUNTERTOPS

Drop edge Thermofoil countertop Benefits: Pull Test - it pulls at 450-500 PSI, it will pull the core apart before the Thermofoil gives. Cold Cracks - will not cold crack or pull out like a T-mold Edge or Self-Edge. Moisture Exposure - it will withstand moisture better than T-mold Edge or Self-Edge because it is sealed so that no water can penetrate.



SAFETY

A pressurized LP line test ensures that your unit is safe and all LP gas components are in working order.



HOT WATER

Our standard 6 gallon gas/electric DSI water heater allows you to fire up your water heater quickly and easily from inside your Catalina. It also features a great quick recovery feature which allows you to heat up to 16.2 gallons of hot water per hour. So whether you are washing the dishes or taking a shower, you'll always have plenty of hot water.



SUPERIOR AIR FLOW

Our full radius smooth metal front end creates a more aerodynamic unit providing:

- BETTER AIRFLOW
- IMPROVED FUEL COSTS
- BETTER TOWABILITY
- EASY TO CLEAN

Interior Features



- 1 DROP EDGE THERMOFOIL COUNTERTOPS (NOT T-MOLD OR SELF EDGE)
- 2 HIGH RISE FAUCET WITH UNDERMOUNT 50/50 SINK
- 3 FLUSHMOUNT STAINLESS STEEL 3 BURNER RANGE WITH BI-FOLD GLASS RANGE TOP
- 4 FULL EXTENSION BALL BEARING METAL DRAWER GUIDES
- 5 IN-FLOOR DUCTED HEAT
- 6 GRACE CHERRY STAINED WOOD CABINTRY
- 7 81" INTERIOR HEIGHT
- 8 DECORATIVE GLASS INSERTS ON CABINET FRONTS
- 9 ROOF DUCTED A/C
- 10 STAINLESS STEEL MICROWAVE
- 11 STANDARD NIGHT SHADES IN LIVING AREA
- 12 CONGOLEUM LINOLEUM WITH 3 YR. COLD CRACK WARRANTY
- 13 REVERSIBLE REFER INSERT (GRACE CHERRY OR BLACK)
- 14 UNDERBOOTH STORAGE EASY ACCESS DOORS (BOTH SIDES)
- 15 BLUETOOTH STEREO W/CD, DVD, MP3, SD, USB AND AM/FM RADIO
- 16 THERMOFOIL DINETTE TABLE
- 17 OVERHEAD CABINET STORAGE WITH GAS STRUT LIFT ASSIST
- 18 RESIDENTIAL STYLE CARPET
- 19 HIGH RISE RADIUS CORNER CUSHION ON U-SHAPE DINETTES
- 20 DECORATIVE SOFA PILLOWS
- 21 SOLID BEDROOM PRIVACY DOOR

STANDARDS AND OPTIONAL FEATURES

STANDARD EXTERIOR FEATURES

- Cambered structural steel I-Beam frame (with full width out riggers)
- 3/8" Fully decked walk-on roof
- One-piece seamless walkable roof
- Radius entry steps
- 5/8" Tongue & groove plywood floor decking
- R-7 fiberglass insulation in sidewalls, roof & floor
- G-20 tinted windows
- Rain gutters with extended molded downspouts
- Platinum .024" Aluminum exterior skin with 030 skirt metal
- Painted bumper w/drain hose carrier and end caps
- Radius-cornered fiberglass entrance door
- Roto-cast holding tanks
- Flush mount baggage doors that are lockable and radius cornered
- Polished aluminum fender skirts
- Self-adjusting brakes
- 110V G.F.C.I. protected exterior receptacle
- 30-Amp electrical service w/deluxe 110v 45-Amp power converter
- City water hook-up
- Radial Tires
- Easy-lube axles
- 20 Lb. LP bottles w/ABS cover and Auto Switchover
- Stabilizer jacks(4)
- TV antenna with RG-6 coax cabling and satellite prep
- Marine grade speakers (2)
- Frame mounts/prep for cargo/bike rack receiver tube

STANDARD INTERIOR FEATURES

- 35K BTU auto-ignition furnace with wall thermostat
- 6 Gallon gas/electric DSI water heater
- Gas/Electric double door refer w/ reversible insert
- Large pot & pan drawer
- Easy access dinette booth doors

- Under-bed storage, bed lifts easily on 2 gas struts
- 2 Shirt closets with mirrors
- Fireplace at the base of the entertainment center (243RBS, 293RLDS, 333BHDS CK, 343TBDS)
- STANDARD Fireplace at the base of the entertainment center and in the bedroom (333RETS only)
- Bluetooth stereo w/CD, DVD, MP3, SD, USB and AM/FM radio
- Residential in-floor ducted heat
- Cable/TV hook-up in front bedroom
- 81" Living room ceiling height
- 2 full-length night stands w/ receipts
- Congoleum woodplank linoleum flooring
- Grace Cherry stained wood cabinets
- 12V On demand water pump
- Decorative glass in living room cabinets
- Systems monitor panel
- Jack knife convertible sofa with sofa pillows
- Shower curtain with curved shower track
- Radius glass shower enclosure (243RBS, 263RLS, 283RKS, 293RLDS, 313DBDS CK, 333RETS, 333BHDS CK, 343TBDS)
- Hard valance window treatment with lambrequin
- Large dinette tabletop with marine grade pedestal
- Marine toilet with foot flush
- Full size medicine cabinet w/ mirror
- Bathroom power roof vent
- Drop edge Thermofoil countertop
- High rise residential faucet
- Screwed cabinet construction with pocket bored solid lumber core stiles
- Easy-View extra large picture window at dinette
- Silverware drawer
- Solid bedroom and bunk room doors
- Radius corner interior walls (where applicable)
- Pleated night shades in living room
- ABS tub/shower surround
- Full length ball-bearing kitchen drawer guides

- Water heater by-pass winterization kit
- Residential quilted bedspread
- Comfort series mattress
- Speakers in living room ceiling

FOR YOUR SAFETY

- Smoke alarm
- Fire extinguisher
- Dead-bolt lock on entry door
- LP/CO2 gas detector
- Fire escape windows

POPULAR OPTIONS

- 32" flat screen LED TV in bedroom (333RETS only)
- Enclosed and heated underbelly
- 15K BTU ducted A/C
- 50 Amp service with second 13.5K A/C (293RLDS, 313DBDS CK, 323BHDS, 333RETS, 343TBDS)
- 50 Amp service with second A/C prep (293RLDS, 313DBDS CK, 323BHDS, 333RETS, 343TBDS)
- Free standing table w/ 4 chairs (N/A U-Dinette floorplans)
- Tri-fold hide-a-bed sofa
- Kitchen sink covers
- Bar stools (Recommended 243RBS, 343TBDS)
- Fireplace in living room (283RKS, 313DBDS CK, 323BHDS CK)
- Pull-out camp kitchen (273BHS) (standard 293QBCK)
- Front Queen Bed IPO Quad Bunks (343TBDS)
- Two (2) 30 Lbs. LP tanks with ABS cover
- Half bath IPO walk-in closet (313BHDS only)
- Entertainment jack knife sofa IPO COA Cube futon
- La-Z-Boy reclines IPO swivel rockers (263RLS, 283RKS, 293RLDS, 333RETS)



LEGACY EDITION PACKAGE

- POWER TONGUE JACK
- REMOTE OPERATED POWER AWNING WITH LED LIGHT
- REMOTE OPERATED STARLIGHT SYSTEM
- SKYLIGHT ABOVE TUB/SHOWER
- 32" FLAT SCREEN LED TV AND SWING ARM BRACKET
- BLUETOOTH STEREO W/ CD, DVD, MP3, SD, USB AND AM/FM RADIO
- UNDER MOUNT DUAL BASIN DEEP KITCHEN SINK
- STAINLESS STEEL OVEN
- MOSAIC TILE BACKSPLASH AND STAINLESS STEEL LIGHTED VENT HOOD
- FLUSH MOUNT 3 BURNER RANGE WITH BI-FOLD GLASS RANGE TOP
- LED INTERIOR LIGHTING
- STAINLESS STEEL DIGITAL MICROWAVE
- REAR VISION CAMERA PREP
- SPARE TIRE AND COVER
- EXTERIOR UTILITY SHOWER
- FRONT DIAMOND PLATE ROCK GUARD
- BLACK TANK FLUSH
- EXTERIOR TV MOUNT WITH 110V OUTLET
- SPORT WHEEL PACKAGE (SILVER E-COAT SPORT WHEELS WITH CHROME HUBS AND LUGS)

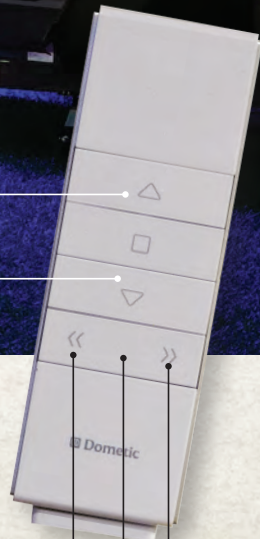




SCAN THE QR CODE ABOVE WITH YOUR SMARTPHONE TO SEE OUR STARLIGHT SYSTEM IN ACTION.

AWNING OUT 

AWNING IN 



LED LIGHTS DIMMER 
 LED LIGHT ON/OFF 
 LED LIGHTS BRIGHTER 

FREE

STARLIGHT SYSTEM!

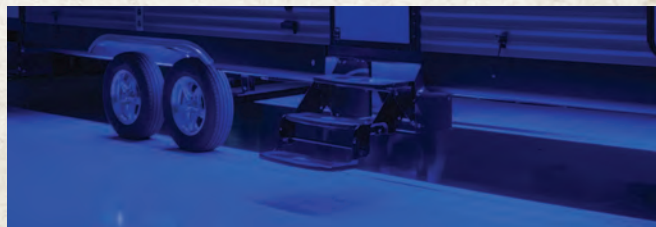
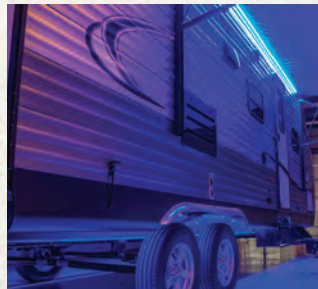
CATALINA IS PROUD TO RELEASE OUR NEW REMOTE OPERATED STARLIGHT SYSTEM FREE AS PART OF OUR LEGACY EDITION PACKAGE

MULTIPLE LIGHTS!

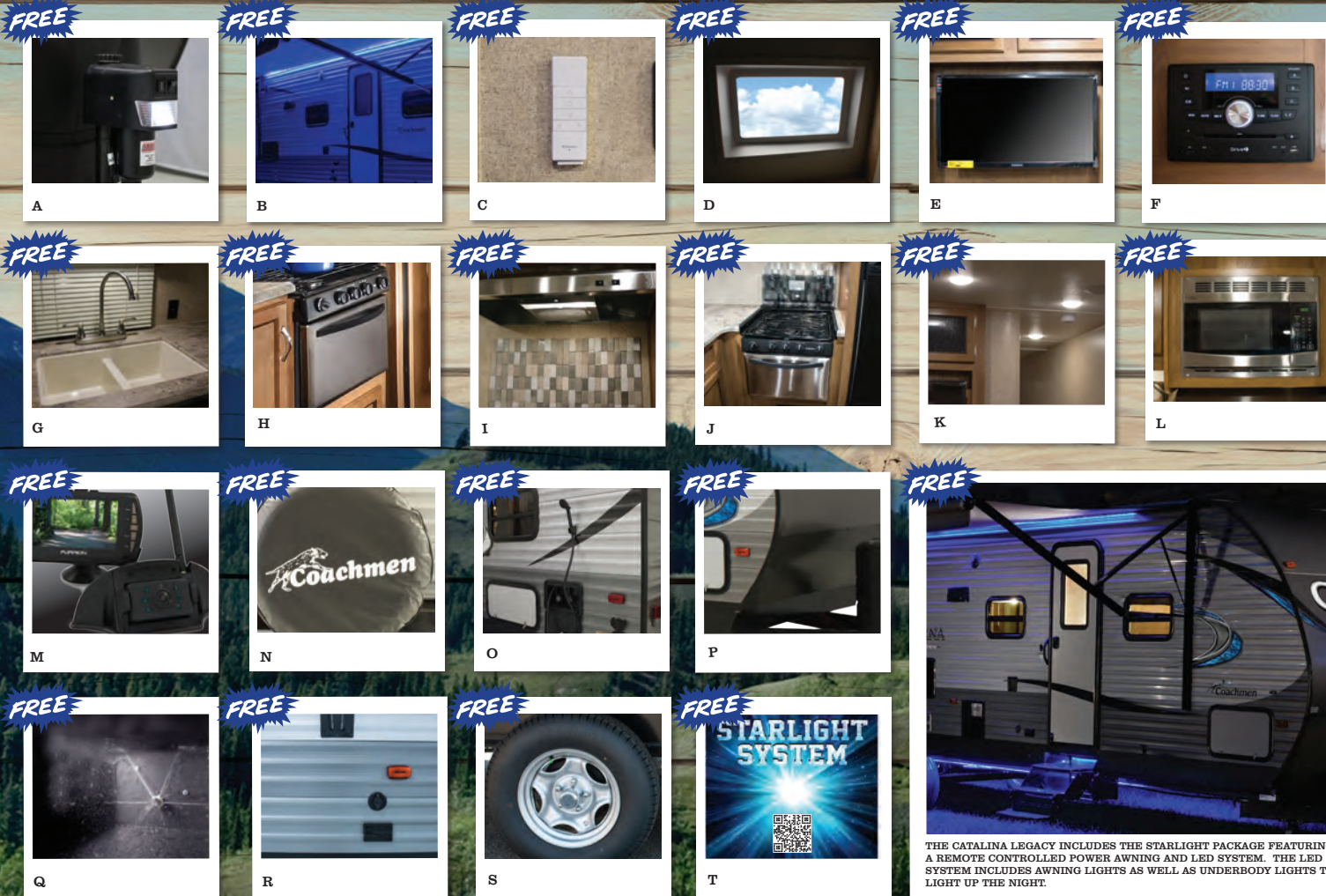
THE STARLIGHT SYSTEM INCLUDES BLUE LED LIGHTS INSTALLED ALONG THE FRAME UNDER BOTH SIDES OF THE TRAILER AND UNDER THE POWER AWNING

REMOTE OPERATION!

SIMPLE TO CONTROL, THE STARLIGHT SYSTEM ALSO FEATURES A REMOTE ALLOWING YOU TO BRIGHTEN, DIM, TURN THE LIGHTS ON/OFF AND OPEN/CLOSE THE AWNING



FREE Legacy Edition Package



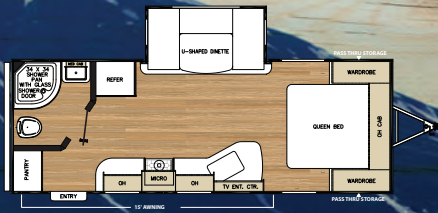
- A POWER TONGUE JACK
- B REMOTE OPERATED POWER AWNING WITH LED LIGHT
- C REMOTE OPERATED STARLIGHT SYSTEM
- D SKYLIGHT ABOVE TUB/SHOWER
- E 32" FLAT SCREEN LED TV AND SWING ARM BRACKET
- F BLUETOOTH STEREO W/CD,DVD, MP3, SD, USB AND AM/FM RADIO
- G UNDER MOUNT DUAL BASIN DEEP KITCHEN SINK
- H STAINLESS STEEL OVEN
- I MOSAIC TILE BACKSPLASH AND STAINLESS STEEL LIGHTED VENT HOOD
- J FLUSH MOUNT 3 BURNER RANGE WITH BI-FOLD GLASS RANGE TOP
- K LED INTERIOR LIGHTING
- L STAINLESS STEEL DIGITAL MICROWAVE
- M REAR VISION CAMERA PREP
- N SPARE TIRE AND COVER
- O EXTERIOR UTILITY SHOWER
- P FRONT DIAMOND PLATE ROCK GUARD
- Q BLACK TANK FLUSH
- R EXTERIOR TV MOUNT WITH 110V OUTLET
- S SPORT WHEEL PACKAGE (SILVER E-COAT SPORT WHEELS WITH CHROME HUBS AND LUGS)
- T SCAN THE QR CODE TO SEE OUR STARLIGHT SYSTEM IN ACTION

THE CATALINA LEGACY INCLUDES THE STARLIGHT PACKAGE FEATURING A REMOTE CONTROLLED POWER AWNING AND LED SYSTEM. THE LED SYSTEM INCLUDES AWNING LIGHTS AS WELL AS UNDERBODY LIGHTS TO LIGHT UP THE NIGHT.

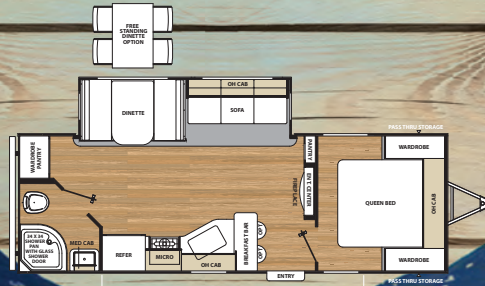
FREE LEGACY EDITION PACKAGE

Catalina would like to reward our outstanding Dealers and Customers for their continued business! There is no better way to reward you than with the Legacy Edition Package! All of our best options have been combined into a FREE Legacy Edition Package. At Coachmen Catalina, we overtly express our gratitude to those who have already become a part of the Coachmen Family and warmly welcome those future campers that choose Coachmen Products. Thank you for your business!

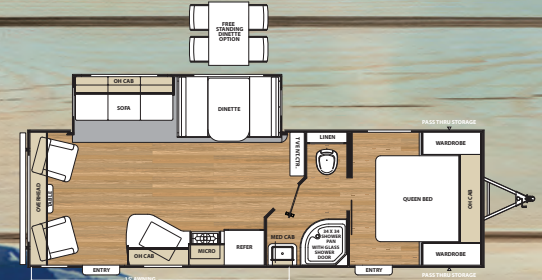
Floorplans



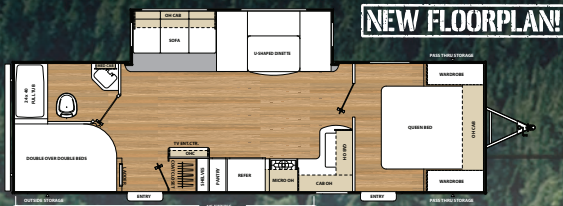
223RBS



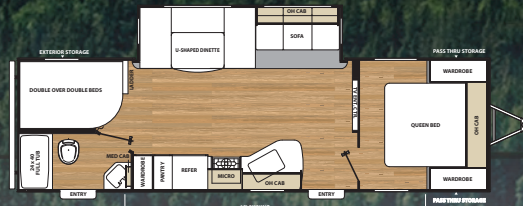
243RBS



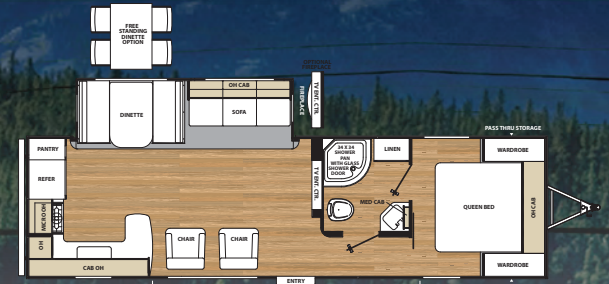
263RLS



273BHS

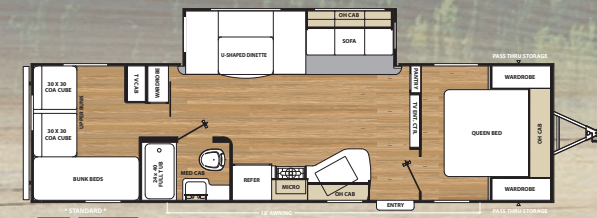


283DDS

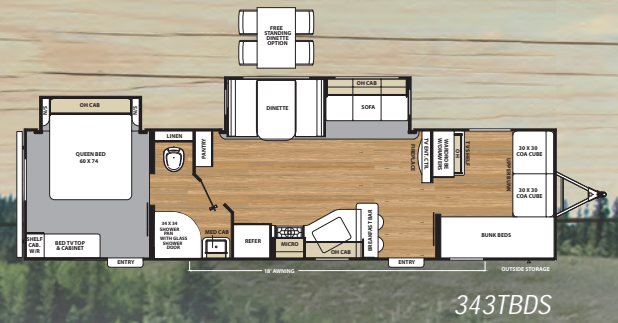
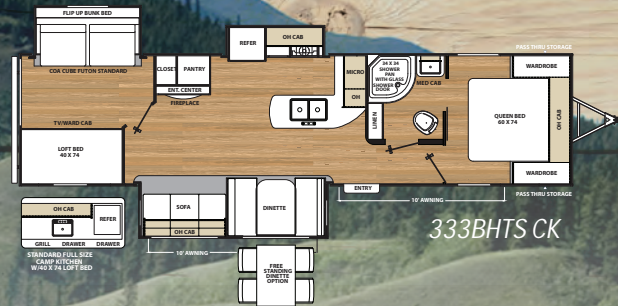
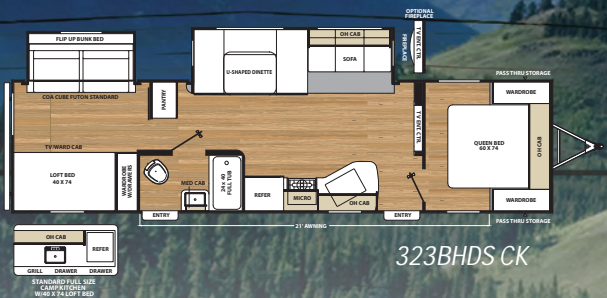
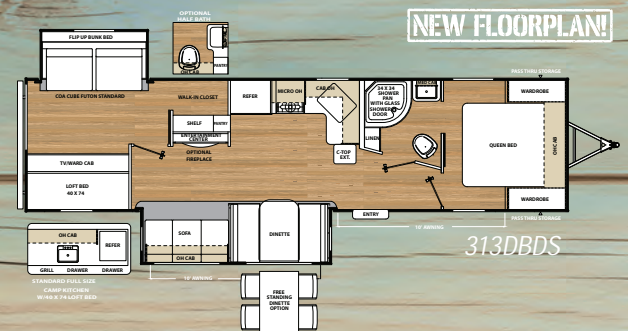
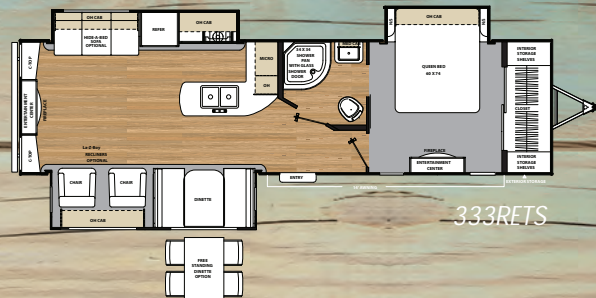
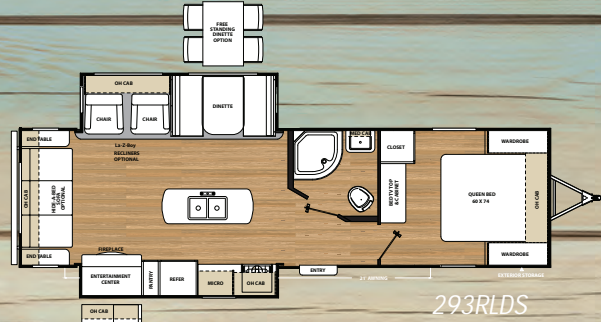


283RKS

Customer Notes



293QBCK



MODEL	223RBS	243RBS	263RLS	273BHS	283DDS	283RKS	293QBCK	293RLDS	313DBDS	323BHDS CK	333BHTS CK	333RETS	343TBDS
UVW	5,171	5,746	6,112	TBD	6,316	6,509	6,572	7,530	TBD	7,530***	8,450	7,941	7,353
Carrying Capacity	2,029	1,838	1,588	TBD	1,384	2,691	2,928	1,970	TBD	1,750	2,350	2,559	2,087
GVWR	7,200	7,600	7,700	TBD	7,700	9,200	9,500	9,500	TBD	9,500	10,800	10,500	9,500
Hitch Weight	710	687	718	TBD	785	735	835	940	TBD	790	850	1,050	913
Exterior Height (with A/C)	11'1"	11'1"	11'1"	TBD	11'1"	11'1"	11'1"	11'1"	TBD	11'1"	11'1"	11'1"	11'1"
Fresh Water Capacity (gal.)	46	46	46	TBD	46	46	46	46	TBD	46	46	46	44
Grey Water Capacity (gal.)	40	40	40	TBD	40	70	40	40	TBD	40	80**	40	40
Waste Water Capacity (gal.)	30	30	30	TBD	30	30	30	30	TBD	30	30	30	30
Awning Length	15'	15'	15'	TBD	15'	18'	18'	21'	TBD	21'	21'	14'	18'
Wheel Size	14"	15"	15"	TBD	15"	15"	15"	15"	TBD	15"	15"	15"	15"
Exterior Length	26'0"	27'11"	29'10"	TBD	31'7"	32'6"	33'5"	33'9"	TBD	35'10"	36'9"	35'10"	35'8"
Exterior Width	96"	96"	96"	TBD	96"	96"	96"	96"	TBD	96"	96"	96"	96"
Interior Height (Coach)	81"	81"	81"	TBD	81"	81"	81"	81"	TBD	81"	81"	81"	81"
Axles	3500 LBS	3500 LBS	3500 LBS	TBD	3500 LBS	4400 LBS	4400 LBS	4400 LBS	TBD	4400 LBS	5000 LBS	5000 LBS	4400 LBS

PLEASE SEE THE BACK COVER FOR INFORMATION REGARDING WEIGHTS.



COA

COACHMEN OWNERS ASSOCIATION

FREE MEMBERSHIP

www.coachmenowners.com

CUSTOMER SATISFACTION



www.ForestRiverBuyLocal.com



Travel Easy™ Roadside Assistance

RVing is easier with Coachmen's Travel Easy™ Roadside Assistance provided FREE the first year of ownership to those who purchase a New Coachmen RV. Administered by Coach-Net, this service provides you with 24/7 operational, technical and emergency road service coverage. Also included is towing, fuel delivery, jump starts, lockout service, tire changes, mobile mechanic and unlimited technical assistance. Anywhere. Anytime. Travel Easy™ is the security of knowing that help is an easy phone call away.

All information contained in this brochure is believed to be accurate at the time of publication. However, during the model year, it may be necessary to make revisions and Forest River, Inc., reserves the right to make all such changes without notice, including prices, colors, materials, equipment and specifications as well as the addition of new models and the discontinuance of models shown in this brochure. Therefore, please consult with your Forest River, Inc., dealer and confirm the existence of any materials, design or specifications that are material to your purchase decision.

To learn more about Coachmen RV and our products and see how Coachmen is leading the great outdoors, visit www.coachmenrv.com
Coachmen Industries 423 N. Main St., Middlebury, IN 46540
Phone: 574-825-5821

GVWR (Gross Vehicle Weight Rating) - is the maximum permissible weight of the unit when fully loaded. It includes all weights, inclusive of all fluids, cargo, optional equipment and accessories. For safety and product performance do NOT exceed the GVWR.

GAWR (Gross Axle Weight Rating) - is the maximum permissible weight, including cargo, fluids, optional equipment and accessories that can be safely supported by a combination of all axles.

UVW (Unloaded Vehicle Weight)* - is the typical weight of the unit as manufactured at the factory. It includes all weight at the unit's axle(s) and tongue or pin and LP Gas. The UVW does not include cargo, fresh potable water, additional optional equipment or dealer installed accessories.

*Estimated Average based on standard build optional equipment.

CCC (Cargo Carrying Capacity)** - is the amount of weight available for fresh potable water, cargo, additional optional equipment and accessories. CCC is equal to GVWR minus UVW. Available CCC should accommodate fresh potable water (8.3 lbs per gallon). Before filling the fresh water tank, empty the black and gray tanks to provide for more cargo capacity.

** Estimated average based on standard build optional equipment

Each Forest River RV is weighed at the manufacturing facility prior to shipping. A label identifying the unloaded vehicle weight of the actual unit and the cargo carrying capacity is applied to every Forest River RV prior to leaving our facilities. The load capacity of your unit is designated by weight, not by volume, so you cannot necessarily use all available space when loading your unit.

CATALINA

LEGACY EDITION



Learn More

Scan this barcode using a QR Reader on your smart phone to learn more about Forest River.



A Berkshire Hathaway company.



YOUR CATALINA DEALER



© Copyright 2017 Catalina, Coachmen RV, a Division of Forest River Inc., A Berkshire Hathaway company. All Rights Reserved