

FOREST RIVER
Heritage Glen
LTZ

PIONEERING VALUE
WITHOUT COMPROMISE



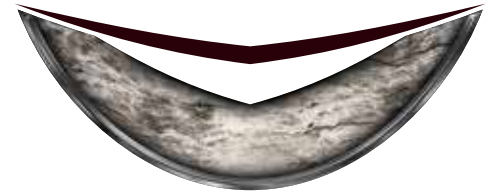
TRAVEL TRAILERS AND FIFTH WHEELS





**HERITAGE GLEN RECREATIONAL VEHICLES ARE ABOUT
SUPERIOR CRAFTSMANSHIP, QUALITY COMPONENTS AND
BUT MOST IMPORTANTLY THEY ARE ABOUT FAMILY FUN.**

Heritage Glen



LTZ



**INTELLIGENT DESIGN,
AND RESIDENTIAL FINISHES.**

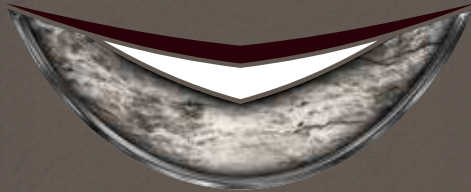
300BH

LTZ

HERITAGE GLEN
TRAVEL TRAILERS



FOREST RIVER
Heritage Glen



LTZ

SIENNA
DECOR



PILLOWS



SOFA



DINETTE



300BH LIVING AREA



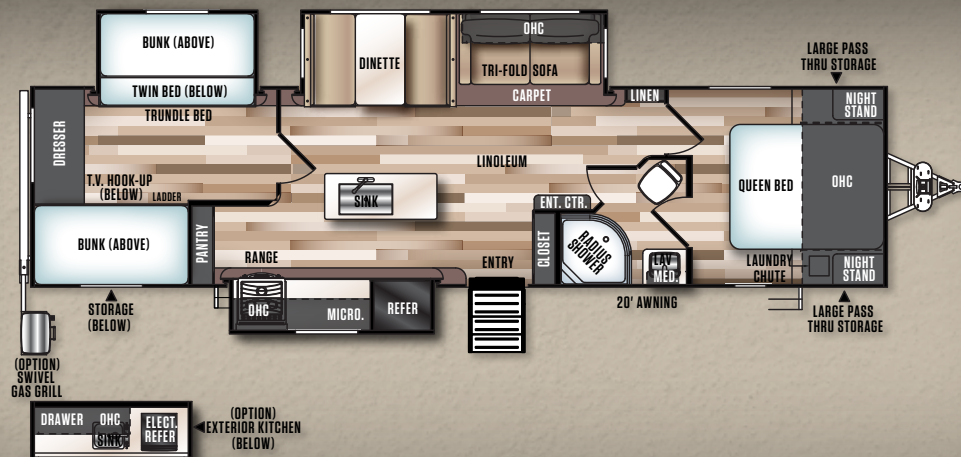
300BH KITCHEN AREA
(SHOWN WITH OPTIONAL RESIDENTIAL REFER)



300BH BUNKROOM



300BH FLOORPLAN



337BAR

LTZ

HERITAGE GLEN
FIFTH WHEELS



MILAN
DECOR



337BAR KITCHEN/ENTERTAINMENT AREA
(SHOWN WITH OPTIONAL FREE STANDING DINETTE)

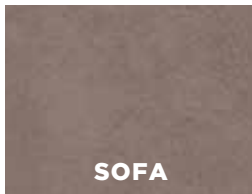
FOREST RIVER
Heritage Glen



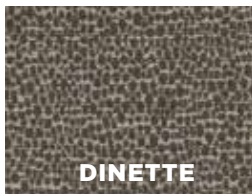
LTZ



PILLOWS



SOFA



DINETTE





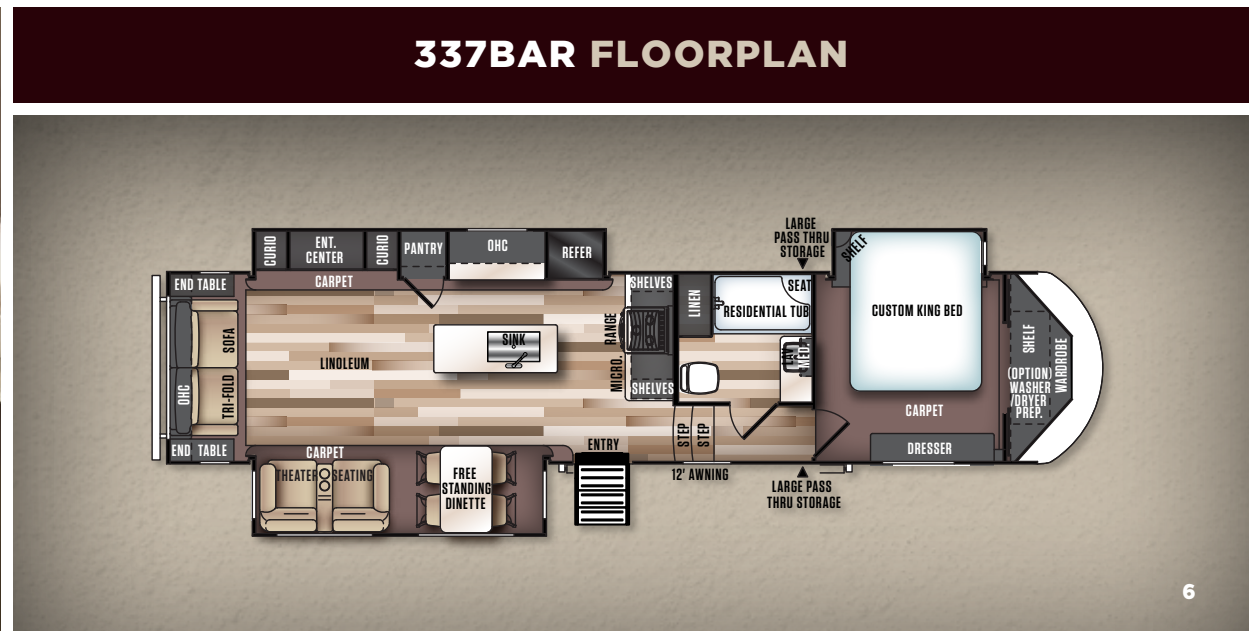
337BAR GOURMET KITCHEN
(SHOWN WITH OPTIONAL RESIDENTIAL REFER)



337BAR BEDROOM

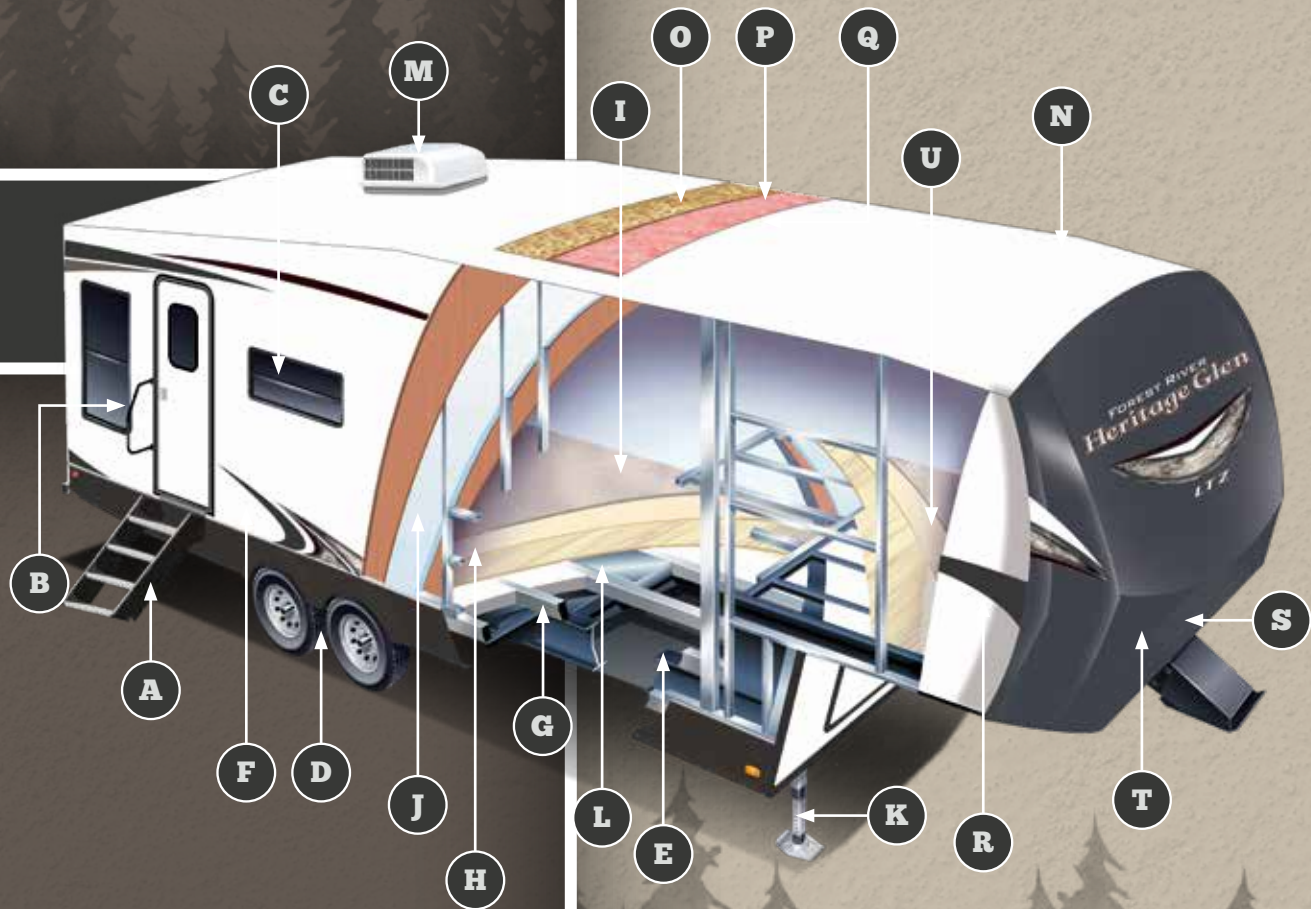


337BAR BATHROOM





CONSTRUCTION



- A** Aluminum entry steps
- B** Folding entry assist handle
- C** Tinted safety glass windows
- D** Dexter axles
- E** Heated and enclosed underbelly
- F** Laminated vacuum bonded aluminum sidewalls
- G** I-Beam powder-coated frame with cambered chassis
- H** Laminated vacuum bonded floor
- I** Residential stain resistant carpet
- J** High density block foam insulation
- K** Power front landing gear (fifth wheels only)
- L** Under-floor ducted heat
- M** Ducted 13.5 K BTU high output air conditioning
- N** One piece seamless roof (12 yr. warranty)

- O** 3/8" roof decking (full walk-on roof)
- P** R-14 fiberglass insulation in ceiling, front cap & rear wall
- Q** Standard insulated duct for central air (all models)
- R** Gel coated fiberglass exterior
- S** Hitch light
- T** Sharp turn radius front cap
- U** Aluminum framed and Astrofoil insulated upper deck



EXCELLENT CRAFTSMANSHIP

Only the finest attention to detail goes into each Heritage Glen. Our skilled craftsmen have many years of experience building beautifully finished cabinetry. The solid nature of our well designed woodwork is another reason why Heritage Glen is the best built RV on the road.

STANDARDS + OPTIONS

HERITAGE GLEN CONSTRUCTION/ EXTERIOR FEATURES

- Aluminum Entry Steps at Main Entry (Quad FW's/Triple TT's)
- Dexter Axles (5 yr. warranty) w/ 15" Radial Tires (16" on Select Models) & Aluminum Wheels
- Painted Fiberglass Front Cap
- Aerodynamic Travel Trailer & Fifth Wheel Front Cap w/ LED Light Strip(s)
- Wide Track Suspension (Travel Trailers)
- 3 Sided Aluminum-Framed Vacuum-Bonded Construction
- Gel Coated Fiberglass Exterior
- Laminated Sidewalls
- Laminated Floor w/ In-Floor Heat
- 6'5" Full Walk-In 5th Wheel Slide-Outs (N/A bed slides)
- One Level, Full Stand-Up Height 5th Wheel Upper Decks
- 30" Smooth Fiberglass Radius Main Entry Door with Tinted Window and Shade prep (26" secondary)
- Swing Arm Entry Assist Handle
- Extra Large Full Pass-Thru Storage (per floorplan)
- One Touch Electric Awning w/ Adjustable Legs (1 year warranty)
- Marine Grade Exterior Speakers w/Blue LED Light
- Exterior TV Bracket w/Cable and Power Outlet
- Upgraded ABS Fender Skirts
- Grab Handle at 5th Wheel Interior Steps
- Interior Grab Handle at Entry Door
- Powder Coated I-Beam Frame
- Cambered Chassis
- Water Heater By-Pass
- Fifth Wheel Docking Station
- Power Flush Floor Slide-Out Systems
- 16 Gal. per hour G/E Quick Recovery DSI Water Heater (2 year warranty)

- Stabilizer Jacks
- Backer for Rear Ladder
- One Piece Seamless Roof (12 Year Warranty)
- Full Walk-on Roof
- Power Front Landing Gear (5th Wheels)
- Tinted Safety Glass Windows
- Black Tank Flush

KITCHEN

- LG® Solid Surface Countertops
- Stainless Steel Dometic® Double Door Refrigerator (2 Year Warranty)
- Residential, Under Mount Sink
- Decorative Marble Kitchen Backsplash
- Stainless Steel Microwave w/ Carousel (1 Year Warranty)
- High Rise, Pull-Out Sprayer Faucet
- Stainless Steel Vented Range Hood w/ Light
- Beau® Plank Wood Linoleum
- Solid Wood Drawer Fronts w/ Full Extension Ball Bearing Guides
- Solid Wood Raised Upper Panel Cabinet Doors
- Large Overhead Cabinets
- Wall-Mounted Systems Monitor Panel
- Satin Nickel Hardware
- Large Residential Pantry (Select Models)

LIVING ROOM

- 13,500 BTU Ducted Roof Air Conditioner w/ Quick Cool (2 Year Warranty)
- Residential Stain Resistant Carpet
- Pushback Recliners (Per Floorplan)
- Theatre Seating w/ Built-In Recliners (Per Floorplan)
- Deluxe Dinette Tabletop
- Solid Wood Drawer Fronts
- Jumbo 74" Dinette (Per Floorplan)
- Large Dinette Picture Window
- Winegard Digital TV Antenna

- Cable TV and Satellite Prep
- Extra Large Overhead Cabinets w/ Glass Inserts
- Decorative Dinette
- 30 or 35K BTU Suburban Forced Air DSI Furnace (2 Year Warranty) w/ Digital Thermostat
- Under Floor Heat Ducting
- Roller Shades w/Decorative Valances (All Living Areas, FW Bedrooms)
- E-Z Setup Sleeper Sofa w/ Storage and X-Large Throw Pillows
- Laundry Hamper (Most Travel Trailers)
- 32" HD TV and CD/DVD/AM/FM w/ MP3 Hookup and Surround Sound
- Electric Fireplace (Most Floorplans)

BEDROOM

- Custom King Bed in All Bedroom Slide Travel Trailers and Fifth Wheels (66" X 80")
- Strut Lifted Storage Area Under Bed
- Load-N-Go Collapsible Storage Bins Under TT Bed Base (Most Models)
- Oversized Bunks w/Teddy Bear Bunk Mats (Per Floorplan)
- Solid Bedroom Privacy Doors
- Mirrored Wardrobes w/ Two Nightstands and Outlets (Most Travel Trailers)
- Full Length Wall Mirror (5th Wheel Bedrooms)
- Swing Arm TV Bracket (5th Wheel Bedrooms)
- Tall, 6 Drawer Dressers (Most 5th Wheels)
- Wrap Around Shelves on Fifth Wheel Bed Slides

BATHROOM

- 30" x 50" Walk-in Shower w/ Sliding Glass Door (5th Wheels)
- 12-Volt Power Bath Roof Exhaust Vent

- Wooden Medicine Cabinet w/ Mirrored Door
- Dometic® Foot Flush Toilet
- Vinyl Tub Surround

SECURITY AND SAFETY

- LP Leak Detector
- Smoke Detector
- Carbon Monoxide Detector
- Fire Extinguisher
- LED Hitch Light
- Battery Disconnect
- Welded Heavy Duty Safety Chains (Travel Trailers)
- Electric Brakes (all wheels)
- GFI Receptacles
- ANSI 119.2
- Certified to Meet National Highway Traffic Safety Administration Specifications

HERITAGE GLEN OPTIONS

- Free-Standing Dinette w/ 4 Chairs
- Swivel Rocker Recliner (2)
- Living Room Ceiling Paddle Fan (5th wheels)
- 10.7 cu. ft. Residential Refrigerator w/ Inverter (All Models)
- Extreme Weather Package (Calc. @ R38 Floor, Front Cap & Roof)
- Roof Ladder
- 4 Point and 6 Point Electric Auto Level (5th Wheels only)
- 15,000 BTU Ducted A/C w/Quick Cool
- Outside Shower (Travel Trailers)
- 50 Amp Service
- Washer/Dryer Prep (5th Wheels)
- Exterior Kitchen/Bar

Contact your Heritage Glen dealer for a complete list of options.

DECOR OPTIONS

SIENNA

MILAN



PREPARED FOR THE SEASONS

• HEATED AND ENCLOSED UNDERBELLY WITH UNDER FLOOR DUCTED HEATING

• HIGH DENSITY, BLOCK FOAM INSULATION (SIDEWALL AND FLOOR)

• DOUBLE LAYERED FIBERGLASS INSULATION (ROOF, FRONT AND REAR WALL)

• HIGH EFFICIENCY AIR CONDITIONING SYSTEM WITH THICK, INSULATED DUCTING

TOP 15 HERITAGE GLEN FEATURES



- 1 HIGH RISE FAUCET WITH PULLOUT SPRAYER
- 2 RADIUS EDGE LG® SOLID SURFACE KITCHEN COUNTERTOPS WITH LED LIGHTING
- 3 JUMBO BOOTH DINETTE WITH PLYWOOD CORE TOP (SELECT MODELS)
- 4 BATTERY DISCONNECT IN PASS THRU STORAGE AREA
- 5 CONVENIENT LAUNDRY CHUTE DIRECTLY TO PASS THRU STORAGE
- 6 MODERN ROLLER SHADES WITH DECORATIVE VALANCE
- 7 LOAD-N-GO COLLAPSIBLE STORAGE BINS (SELECT MODELS)
- 8 TRI-FOLD, E-Z SET UP SLEEPER SOFA
- 9 PAINTED GEL COAT FIBERGLASS FRONT CAP WITH LIGHT STRIPS ON LITE SERIES TRAVEL TRAILERS AND FIFTH WHEELS, WON'T FADE, CHALK OR CRACK
- 10 STANDARD EXTERIOR TV BRACKET ON EVERY HERITAGE GLEN
- 11 WIDE TRACK SUSPENSION (TRAVEL TRAILERS ONLY) WITH ALUMINUM RIMS
- 12 DOCKING STATION WITH QUICK WINTERIZATION FEATURE (FIFTH WHEELS ONLY)
- 13 BLUE LED LIGHTED MARINE GRADE EXTERIOR SPEAKERS
- 14 ONE TOUCH ELECTRIC AWNING WITH "QUICK PITCH"
- 15 SLAM LATCH BAGGAGE DOORS WITH MAGNETIC CATCHES



1



2



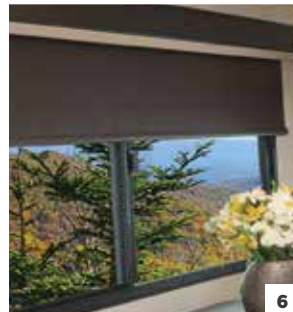
3



4



5



6



7



8



9



10



11



12



13



14



15



LIMITED EDITION PACKAGE FEATURES

- 1 GREEN PACKAGE:**
FURRION SOLAR PANEL
PREP WITH LED LIGHTS
AND LED AWNING LIGHTS
- 2 FURRION CD/DVD/FM/
USB PLAYER WITH
BLUETOOTH**
- 3 STAINLESS STEEL, SINGLE
BOWL, UNDERMOUNT
SINK**
- 4 PUSH BUTTON REMOTE
OPERATES: AWNING,
SLIDES, LED AWNING
LIGHTS, POWER STAB
JACKS**
- 5 RECESSED STOVE WITH
GLASS STOVE COVER**
- 6 FURRION BACK UP
CAMERA PREP**
- 7 POWER TONGUE JACK
AND POWERSTAB JACK**
POWER TONGUE JACK IS NOT
INCLUDED ON 5TH WHEELS
- 8 SOLID-STEP,
ALUMINUM
ENTRY STEPS
(MAIN ENTRY)**
- 9 DENVER MATTRESS**



1



2



3



4



5



6

FOREST RIVER
Heritage Glen
LTZ



7



8



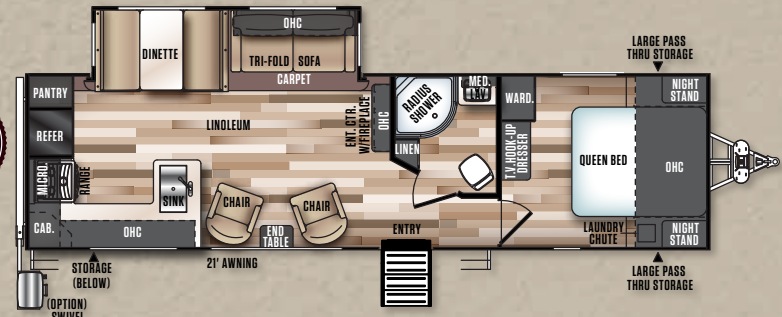
9



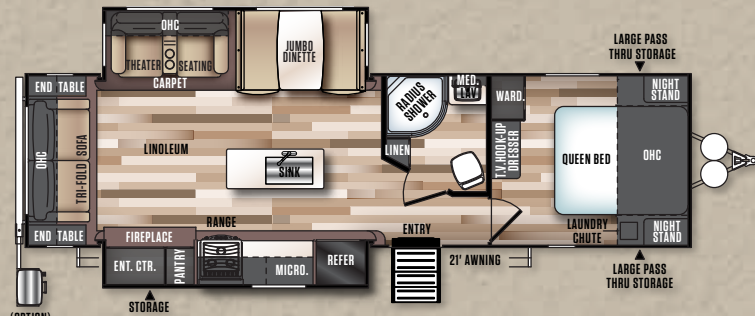
HERITAGE GLEN TRAVEL TRAILER FLOORPLANS



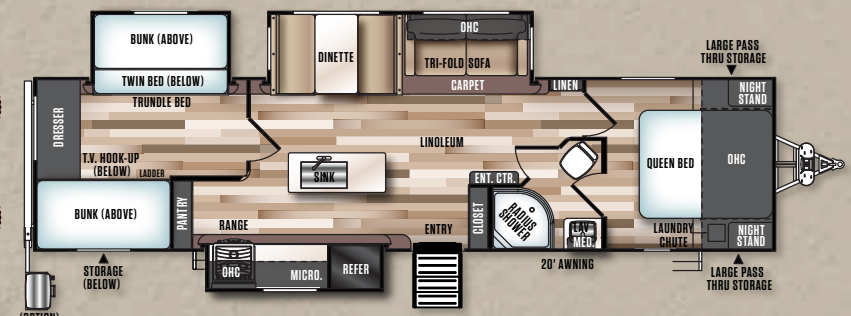
269RL UVW: 6179



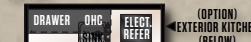
282RK UVW: 6799

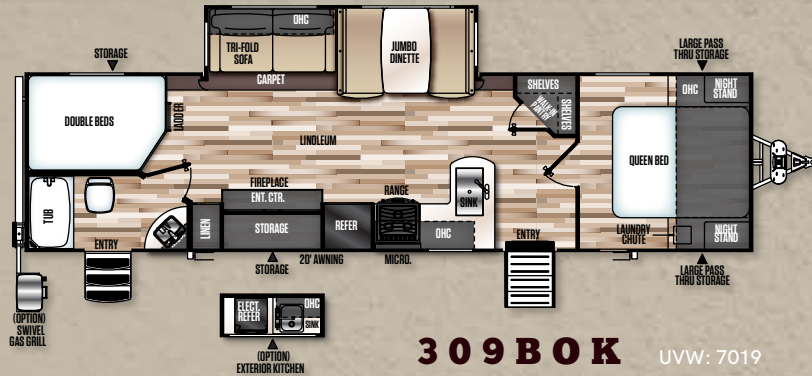


272RL UVW: 7294



300BH UVW: 8439

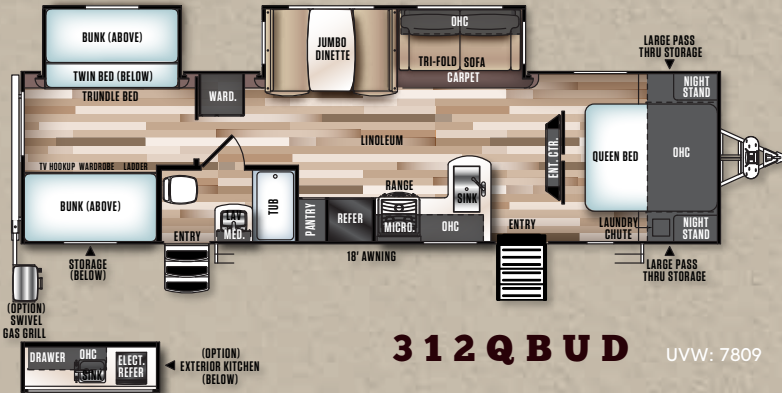




309BOK UVW: 7019



326RL UVW: 8204



312QBUD UVW: 7809



- OPTIONAL EXTERIOR KITCHEN/BAR**
- PRESSED METAL COUNTERTOP AT LOW WORKABLE HEIGHT
 - CONVENIENT 110V OUTLET
 - HUGE CABINETS FOR STORAGE
 - DEEP BOWL SINK WITH PLUMBING TO ENCLOSED GREY TANK

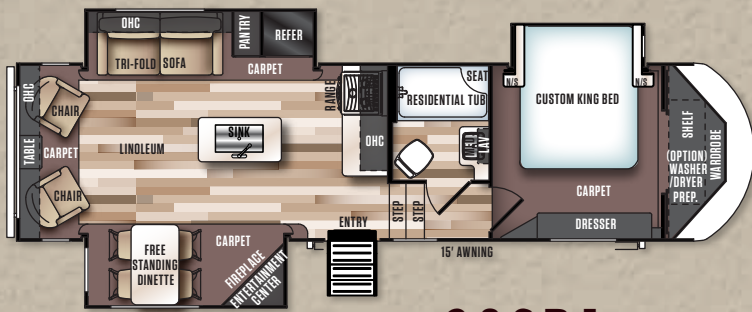
SPECIFICATIONS

MODEL	269RL	272RL	282RK	300BH	309BOK	312QBUD	326RL
HITCH WEIGHT (lbs)	730	845	700	880	800	870	977
AXLE WEIGHT	5390	6390	6040	7500	6160	6880	7168
UVW	6179	7294	6799	8439	7019	7809	8204
CCC (cargo cap)	3351	2351	2701	1401	2581	1861	1733
EXT LENGTH	33' 3"	34' 4"	35' 0"	37' 5"	35' 10"	35' 10"	37' 10"
EXT HEIGHT	11' 1"	11' 1"	11' 4"	11' 2"	11' 2"	12' 2"	11' 2"
FRESH WATER CAP (gal)*	48	48	48	48	48	48	48
BLACK WATER CAP (gal)	30	30	27	32	32	32	27
GREY WATER CAP (gal)	60	66	54	96	59	50	32
TIRE SIZE (in)	15"	15"	15"	15"	15"	15"	15"
AWNING SIZE (ft)	20'	20'	21'	20'	20'	18'	12'

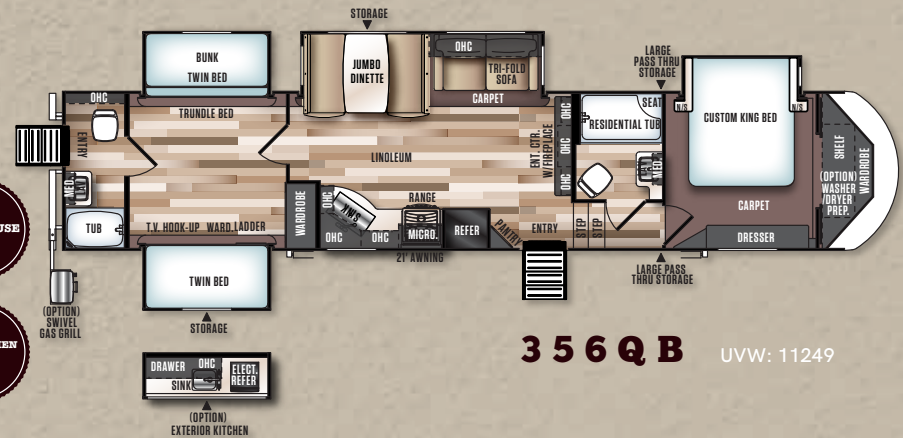
FOREST RIVER
Heritage Glen
LTZ

See back cover for more information on weights. *Includes hot water heater

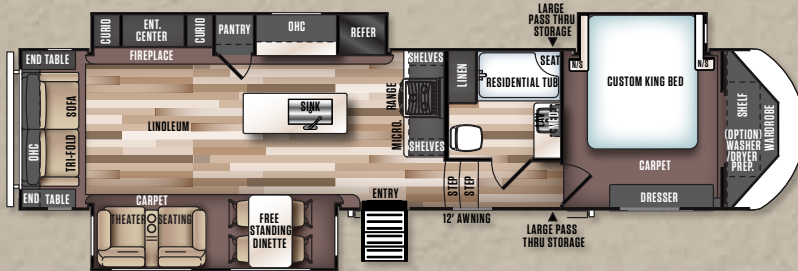
HERITAGE GLEN FIFTH WHEEL FLOORPLANS



286RL UVW: 8499



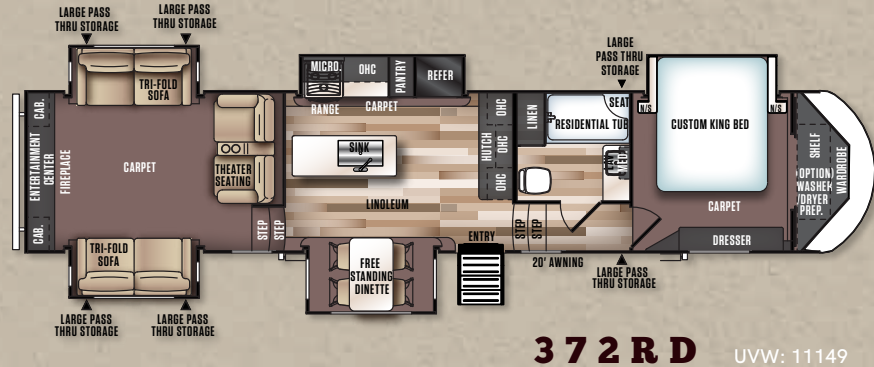
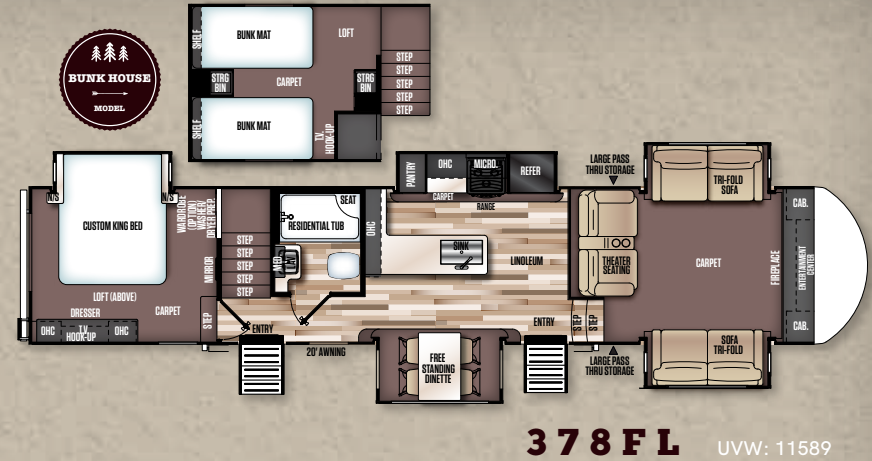
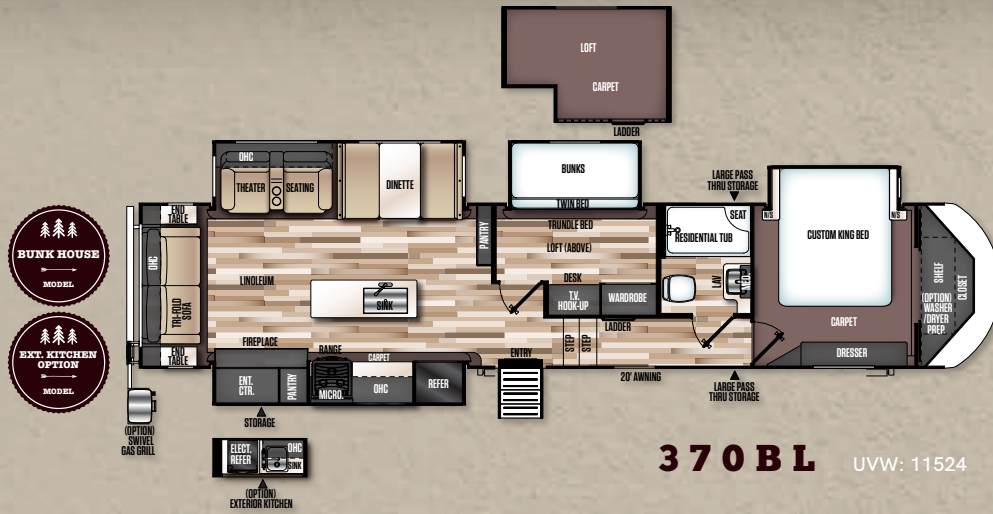
356QB UVW: 11249



337BAR UVW: 10069



368RLBHK UVW: 10924



- OPTIONAL EXTERIOR KITCHEN/BAR**
- PRESSED METAL COUNTERTOP AT LOW WORKABLE HEIGHT
 - CONVENIENT 110V OUTLET
 - HUGE CABINETS FOR STORAGE
 - DEEP BOWL SINK WITH PLUMBING TO ENCLOSED GREY TANK

SPECIFICATIONS

MODEL	286RL	337BAR	356QB	368RLBHK	370BL	372RD	378FL
HITCH WEIGHT (LBS)	1625	1990	1790	2080	2275	2125	2140
AXLE WEIGHT	6815	8020	9400	8785	9190	8965	9390
UVW	8499	10069	11249	10924	11524	11149	11589
CCC (cargo cap)	2086	2121	2541	3156	2751	2976	2551
EXT LENGTH	34' 1"	39' 7"	42' 3"	42' 0"	42' 6"	42' 9"	43' 2"
EXT HEIGHT	12' 7"	13' 2"	13' 2"	13' 1"	13' 1"	13' 3"	13' 10"
FRESH WATER CAP (gal)*	48	48	48	48	48	48	48
BLACK WATER CAP (gal)	30	30	60	30	30	30	27
GREY WATER CAP (gal)	62	62	87	80	80	62	57
TIRE SIZE (in)	15"	16"	16"	16"	16"	16"	16"
AWNING SIZE (ft)	16'	13'	21'	19'	20'	20'	20'

FOREST RIVER
Heritage Glen



LTZ

See back cover for more information on weights. *Includes hot water heater

GVWR (Gross Vehicle Weight Rating) - is the maximum permissible weight of the unit when fully loaded. It includes all weights, inclusive of all fluids, cargo, optional equipment and accessories. For safety and product performance do NOT exceed the GVWR.

GAWR (Gross Axle Weight Rating) - is the maximum permissible weight, including cargo, fluids, optional equipment and accessories that can be safely supported by a combination of all axles.

UVW (Unloaded Vehicle Weight)* - is the typical weight of the unit as manufactured at the factory. It includes all weight at the unit's axle(s) and tongue or pin and LP Gas. The UVW does not include cargo, fresh potable water, additional optional equipment or dealer installed accessories.

*Estimated Average based on standard build optional equipment.

CCC (Cargo Carrying Capacity)** - is the amount of weight available for fresh potable water, cargo, additional optional equipment and accessories. CCC is equal to GVWR minus UVW. Available CCC should accommodate fresh potable water (8.3 lbs per gallon). Before filling the fresh water tank, empty the black and gray tanks to provide for more cargo capacity.

** Estimated average based on standard build optional equipment

Each Forest River RV is weighed at the manufacturing facility prior to shipping. A label identifying the unloaded vehicle weight of the actual unit and the cargo carrying capacity is applied to every Forest River RV prior to leaving our facilities.

The load capacity of your unit is designated by weight, not by volume, so you cannot necessarily use all available space when loading your unit.

All information contained in this brochure is believed to be accurate at the time of publication. However, during the model year, it may be necessary to make revisions and Forest River, Inc., reserves the right to make all such changes without notice, including prices, colors, materials, equipment and specifications as well as the addition of new models and the discontinuance of models shown in this brochure. Therefore, please consult with your Forest River dealer and confirm the existence of any materials, design or specifications that are material to your purchase decision.



PRE-DELIVERY INSPECTION FACILITY
20,000 square feet of quality assurance. The bare essentials for a premium product. This state-of-the-art facility gives immediate daily feedback to production for quality assurance in every unit built.

24/7 EMERGENCY ROADSIDE ASSISTANCE

For a worry-free ownership experience Forest River includes one year of Coach-Net RV Technical & Roadside Assistance with each RV purchase. Whether new to the RV lifestyle or an experienced RV enthusiast, Forest River owners have 24/7 access to technical, operational and emergency road service coverage throughout the US & Canada. Coach-Net's fast, dependable service is just a phone call away.

Coach-Net®
RV Technical & Roadside Assistance

FREE MEMBERSHIP
to Forest River Owners' Group

www.forestriverfrog.com

FOREST RIVER
Heritage Glen
LTZ

CUSTOMER SATISFACTION

FOREST RIVER
encourages you to

BUY LOCAL

PREFERENTIAL SERVICE

PRODUCT INFORMATION

www.ForestRiverBuyLocal.com



Learn More
Scan this barcode using a QR Reader on your smart phone to learn more about Forest River.



A Berkshire Hathaway company.

Forest River, Inc.
55470 C.R. 1, Elkhart, IN 46515
(574) 389-4600
www.forestriverinc.com/heritageglen
www.forestriveraccessories.com

YOUR LOCAL HERITAGE GLEN DEALER