

STANDARD FEATURES

INTERIOR APPOINTMENTS

Power Drop-Down Front Bunk
Self-Closing Ball Bearing Drawer Guides Throughout
Thermofoil Countertops Throughout
BeaufloTM
High-Gloss Wood Grain
Brushed Nickel Hardware
Hardwood Cab Doors/Flat Panel
Radius Slider Windows with Safety Glass
Reclining/Swivel Pilot Seats
Soft Touch Jackknife Sofa
Privacy Roller Shades Coach
L-Lounge Dinette (27KB)
Standard Booth Dinette (33BH, 30FW, 31SB)
Round Cockpit Pedestal Table
Easy-Clean Cockpit floor

INTERIOR EQUIPMENT

Radio AM/FM and Bluetooth
Satellite Prep Wire to Roof
Exterior Cable TV Jack
LP Leak Alarm and Smoke Detector
Carbon Monoxide Detector
Fire Extinguisher
King Jack TV Antenna
32" LED TV Coach (27KB, 30FW, 33BH)
50" LED TV Coach (31SB only)
DVD Player in Living room
Broom Closet
Mud Room at Stepwell
Pull-Out Pantry with Counter Top (31SB, 33BH)

GALLEY

Range Hood with Light
Flush Mount, Double Door Refrigerator
High-Rise Kitchen Faucet
Stainless Steel Double Bowl Kitchen Sink
3-Burner Range
Microwave Oven
Tile Backsplash

BATH AND WATER

Porcelain Toilet with Foot Flush
One-Piece ABS Shower Surround
Upgraded Shower Curtain
Power Bath Vent
6-Gallon (Gas) D.S.1 Water Heater
Demand Water Pump
Skylight Over the Shower
Stainless Steel Lavatory Sink

SLEEPING

Queen Bed 60Wx74L (30FW, 33BH)
King Bed 70Wx74L (27KB, 31SB)
Serta Mattress
Designer Headboard
32" LED TV Bedroom

ELECTRICAL/HEATING/AC

30' 30-Amp Power Cord
Automatic Transfer Switch
55-Amp Converter with Distribution Panel
GFI Circuit
Outside Receptacle
Emergency Start Switch
Exterior LED Strip Light
30,000-BTU Electronic Ignition Furnace
15,000-BTU Roof Air Conditioner-Ducted
Duel 12V Coach Batteries
4.0 Generator ONAN
Coach Command Center
Heated Holding Tank Compartment
LED Interior Lights

AUTOMOTIVE/EXTERIOR

Computer Work Station with USB, 12V, 110V
Mega Rear Storage (30FW)
Tilt Steering Wheel
Cruise Control
Intermittent Wipers
Dash Air Conditioning
Cab Privacy Shades
Back Up Monitor with Side Cameras
Radial Tires
Rear Mud Flaps Only
Power Entrance Step-Single
Crowned, Laminated TPO Roof
Radius Trunk Doors
Fiberglass Front Cap
High-Gloss Oyster Sidewalls
Dead Bolt Lock-Entrance Door
26" Radius Entry Door

Standard Oyster Fiberglass with Vinyl Graphics
OPT Oyster Fiberglass with Partial Paint and Vinyl Graphics
OPT Full-Body Paint (Sand Castle)

OPTIONAL FEATURES

INTERIOR COLOR SELECTIONS

Desert Spice
Scenic Swirl
Copper Penny

WOOD GRAINS

Estate Cherry
Cappuccino Cherry

EXTERIOR COLOR SELECTIONS

Standard Oyster Fiberglass with Vinyl Graphics
OPT Oyster Fiberglass with Partial Paint and Vinyl Graphics
OPT Full-Body Paint (Sand Castle)

OPTIONS

50-Amp Package, Including:
• 50-Amp Power Cord
• 5.5-kW Onan Generator
• Two 13,500-BTU Air Conditioners
15,000-BTU A/C with Heat Pump Front
15,000-BTU A/C with Heat Pump Rear
Frameless Tinted Windows with Safety Glass
Outside Entertainment Center with 32" TV and DVD
32" LED TV Above Entry Door (31SB Only)
Fantastic Vent in Bedroom (N/A with 50-Amp Option)
Automatic Leveling Jacks
Diamond Shield - (Required with Full Paint)
CSA Up-Fit
(1) CD-MVSA (Canadian Motor Vehicle Safety Act)
Travel Easy Roadside Assistance (Coach-Net)

EXTERIOR KITCHEN (30FW)

Refrigerator, Sink, and Portable Gas Grill
Gas Grill Stand and Propane Hose and Hook-Up

Notes:

(1) Mandatory For All Canadian Provinces



FREE One-Year Membership - Coachmen Owners Association!

Coachmen is proud to sponsor the largest manufacturer-sponsored camping club in North America ... Coachmen Owners Association (COA). COA provides you a world of ways to enjoy your RV. This is **FUN ON OVERDRIVE** and provides: Free Trip Routing, Exciting Tours & Rallies, Free Campground Directory, Local/State Club Activities, Easy RVing Magazine Free, Theme Park Discounts, Fuel Discounts, Free onebigplanetSM Memberships with discounts at 180,000 merchants, and Much More!

Every new Coachmen RV buyer is eligible for a 1-Year FREE membership in the Coachmen Owners Association. It all adds up to an easy ownership experience!

SPECIFICATIONS

CLASS A GAS	27KB	30FW	31SB	33BH
FORD ENGINE V-10 6.8L 3-Valve	320 HP/460 TRQ	320 HP/460 TRQ	320 HP/460 TRQ	320 HP/460 TRQ
WHEEL BASE	178"	190"	208"	208"
GVWR	18,000 lbs	18,000 lbs	18,000 lbs	18,000 lbs
GCWR	23,000 lbs	23,000 lbs	23,000 lbs	23,000 lbs
FUEL CAPACITY	80 gal	80 gal	80 gal	80 gal
LP GAS CAPACITY	20 gal	20 gal	20 gal	20 gal
FURNACE (BTUs)	30,000	30,000	30,000	30,000
EXTERIOR LENGTH (w/o ladder)	29'	30' 3"	31' 9"	33'
EXTERIOR HEIGHT (with A/C)	12'	12'	12'	12'
EXTERIOR WIDTH	102"	102"	102"	102"
FRESH WATER	45 gal	50 gal	50 gal	50 gal
GREY WATER	40 gal	35 gal	35 gal	40 gal
BLACK WATER	28 gal	35 gal	35 gal	28 gal
WATER HEATER	6 gal	6 gal	6 gal	6 gal
AWNING SIZE	16'	20'	17'	12'
EXTERIOR STORAGE	59 cu. ft.	63 cu. ft.	74 cu. ft.	90 cu. ft.

GVWR (Gross Vehicle Weight Rating): The maximum permissible weight of the unit, including the unloaded vehicle weight (UVW) plus all fluids, cargo, optional equipment, and accessories. For safety and product performance, do not exceed the GVWR.

GCWR (Gross Combined Weight Rating): The maximum total weight of the loaded unit, plus a tow vehicle. This includes the weight of both the unit and tow vehicle, fuel for each, all other fluids, cargo, occupants, optional equipment, and accessories.

Important Note: All capacities are approximate, and all dimensions are nominal. Coachmen motorhomes are designed to allow for a wide variety of uses, extended trips with two people, or short trips with multiple people. Accordingly, each unit allows ample room for sleeping, seating, fluids, and cargo. While the customer is the beneficiary of this design, the customer also bears the responsibility to select the proper combination of passengers, cargo, load, and tow vehicle without exceeding the chassis weight capabilities. Consumer may need additional braking capacity to tow loads greater than 1,000 pounds.

Seat belts should always be worn for passenger safety. Seat belts are provided at most locations to allow convenience in selecting which

seat to occupy. However, it is not intended that all seating positions equipped with a seat belt may be occupied while the vehicle is in motion, without regard to other weight factors.

All Coachmen motorhomes are designed to ensure that the number of passengers allowed while the vehicle is in motion will always at least equal the stated sleeping capacity. Though extra seat belts may be provided, for your safety and the proper operation of your vehicle, limit your passengers to the number allowed by the Net Carrying Capacity of your vehicle.

All information contained in this brochure is believed to be accurate at the time of publication. However, during the model year it may be necessary to make revisions and Coachmen reserves the right to make all such changes without notice, including prices, colors, materials, equipment, and specifications as well as the addition of new models and the discontinuance of models shown in this brochure. Therefore, please consult with your Coachmen dealer and confirm the existence of any materials, design, or specifications that are material to your purchase decision.

© Copyright 2017 Coachmen RV, a Division of Forest River, Inc. - All Rights Reserved



Forest River, Inc. encourages our customers to purchase their Forest River products from a local dealership whenever possible because of the following reasons:

1. Forest River, Inc. dealers are independently owned and operated businesses, so priority service and scheduling is at their discretion and is often provided to customers that purchased their unit at that dealership.
2. Purchasing locally allows customers to establish meaningful relationships with a dealer, enhancing the RV experience through assistance with product questions, user tips or RV regulations for your state or country, and much more!
3. Canadian customers must meet requirements to bring an RV purchased out of the country to their home. These requirements may involve additional inspections and certifications, taxes and fees. Your local Canadian dealer is a professional at meeting these requirements.
4. Scheduling timely warranty repairs and adjustments through a local dealership provides far greater flexibility and convenience to you, the customer!

It is the goal of Forest River, Inc. that all of our RV owners fully enjoy the RV experience and that customer satisfaction meets or exceeds their expectations!



Travel EasyTM Roadside Assistance!

RVing is easier with Coachmen's Travel EasyTM Roadside Assistance provided FREE the first year of ownership to those who purchase a New Coachmen RV. Administered by Coach-Net, this service provides you with 24/7 operational, technical and emergency road service coverage. Also included is towing, fuel delivery, jump starts, lockout service, tire changes, mobile mechanic, and unlimited technical assistance. Anywhere. Anytime. Travel EasyTM is the security of knowing that help is an easy phone call away.

Olathe Ford RV Center
19310 S Gardner Road
Gardner, KS 66030
(913) 856-8145

Coachmen RV, a Division of Forest River, Inc.,
A Berkshire Hathaway Company
423 N. Main St., P.O. Box 30, Middlebury, IN 46540

To learn more about Coachmen RV and our products and see how Coachmen is making the easy life easier, visit www.coachmenrv.com.



Learn More
Scan this barcode using a QR Reader on your smart phone to learn more about Forest River.



A Berkshire Hathaway company.



GREATER THINGS AWAIT

Pursuit
BY COACHMEN

THE COACHMEN ADVANTAGE

What is the Coachmen advantage? It's the collection of unique features offered in a Coachmen motorhome to ensure a smoother ride, a better camping experience, and a motorhome that will last for years.

1. NOBLE SELECTTM

Protected by a three-year warranty, these sidewalls have a high-gloss gelcoat finish to prevent fading. They are also 20% lighter than wood substrate sidewalls, provide more occupant cargo carrying capacity, and offer three times the insulation against extreme climates.

2. AZDELTM COMPOSITE

Most manufacturers use wood sidewalls that can expand, swell, and eventually mold. We use Azdel. It's impervious to water, won't rot or mold, and, with less than a 1% chance of delaminating, it ensures the long-term integrity of the sidewalls.

3. REINFORCED LAMINATION

We vacuum bond and pinch roll every sidewall and floor, then perform a pull adhesion test. Most manufacturers just do one process or the other, but by doing both we improve the strength and longevity of the sidewalls.

4. ELONGATED WHEELBASE

We offer longer wheelbases than other motorhome manufacturers because that means superior weight distribution. The result? Better handling and a smoother ride that results in less driver fatigue.

5. SITE RITE DASHTM

Our dashes are angled 20 degrees forward. This increases the line of sight for the driver, and offers the best road visibility on the market.

6. EVEN COOL DUCTTM

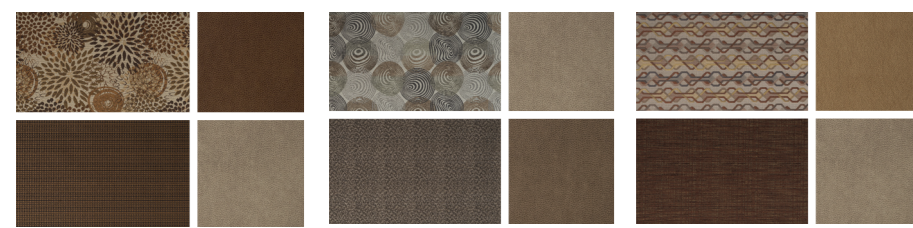
Our patented duct system evenly disperses air through the whole coach. And we use Amaco ducting instead of Styrofoam because it's antimicrobial, preventing the growth of bacteria and ensuring a cool, clean coach in even scorching heat.

7. DIGITAL OWNER'S MANUAL

Our owner's manuals are easy to access through the Coachmen website or our free app. Supplemented with videos, Power Points, and more, it's got all you need to know about your coach.



INTERIOR DECOR COLOR SELECTIONS



Desert Spice

Scenic Swirl

Copper Penny

INTERIOR WOOD COLOR SELECTIONS



Estate Cherry

Cappuccino Cherry

EXTERIOR COLOR OPTIONS

New exterior graphics, including redesigned partial paint and full-body paint options, will make you stand out on the road.



Full-Body Paint – Sand Castle (Optional)



Partial Paint with Vinyl Graphics (Optional)



Vinyl Graphics (Standard)

EXTERIOR FEATURES



Spacious exterior storage compartments make it easy to haul extra gear without taking up space inside.



The super supportive Tread Lite™ Power Step makes it easy to board and exit safely.



An optional outdoor entertainment system, complete with a 32" LED TV and DVD player, is the perfect way to kick back after a day of exploring.

NEVER SETTLE

Complacency is the enemy of success. That's why we've added more standard features than ever before to the all-new Pursuit.

With four separate floorplans to choose from, Pursuit is custom-made to match your ambition. Stylishly built, comfortably spacious, and more rugged than ever, it will be your steadfast exploration companion.

It's also gorgeous. With multiple exterior color options and elegant colors and materials throughout the interior, you're going to love the look of your new Pursuit.



You'll love to cook in our newly upgraded galley. Prepare your meals in style, and enjoy easy clean-up afterward courtesy of the fully updated countertops and tile backsplash.



Dine comfortably on the new fabric leatherette combination dinette with an upgraded foam package that contours to your body for maximum comfort.



Call it your office, or call it your command center: The upgraded dash with a computer workstation puts you in charge. When you're making big plans, you'll have the space and connectivity to get it done.



IT'S TIME TO THINK BIGGER

Pursuit offers a roomy interior along with these excellent features:

The upgraded Noble Select™ high-gloss sidewalls with an Azdel backer are lightweight, tough, and waterproof, and will preserve your coach for years to come.

High-gloss cabinets and self-closing drawer guides offer an attractive and user-friendly interior design.

Continuous composite flooring from Beauflor™ is comfortable on bare feet, but rugged enough to resist tears, rips, and gouges.

New roller shades throughout the vehicle keep the interior both cozy and private.

MORE AT HOME WHILE ON THE ROAD

Setting out to see the world doesn't mean you have to leave tranquility behind. Instead, we think there's plenty of room to bring along all your favorite domestic comforts. And thanks to the Pursuit's new standard upgrades and additional features, there's more now than ever to make you feel right at home.



Pursuit's drop-down bunk is designed to maximize space while stowed away. But at night the bunk's mattress sacrifices nothing in comfort, guaranteeing a good night's sleep.



Sleep soundly and in style with the comfortable support of a Serta mattress and an upgraded headboard. Dual wardrobes and deep drawers provide more storage options for long distance trips.



Stainless steel, porcelain, and an upgraded shower curtain work together to ensure your bathroom is comfortable, attractive, and—best of all—easy to keep clean.

FLOORPLANS

Pursuit features more spacious, more comfortable floorplan options than ever before.

