

WWW.KEYSTONERV.COM/COUGAR

Cougar

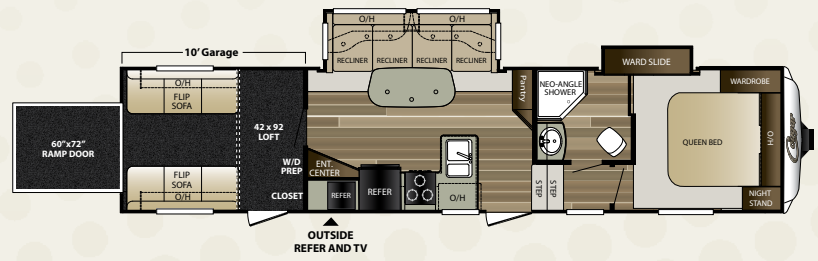
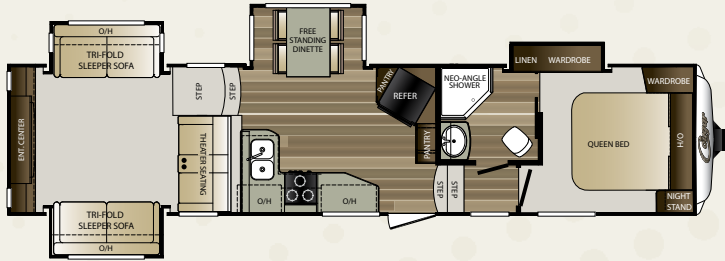
by Keystone



EASTERN EDITION

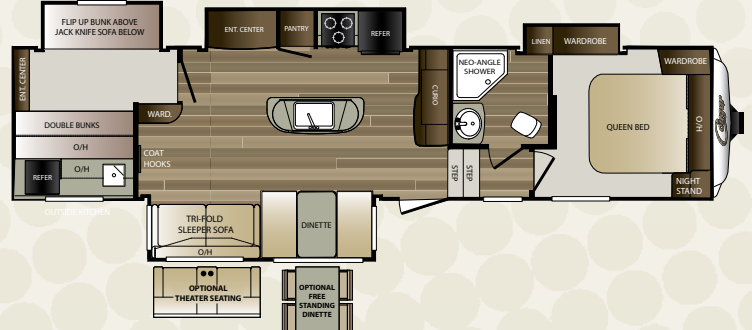
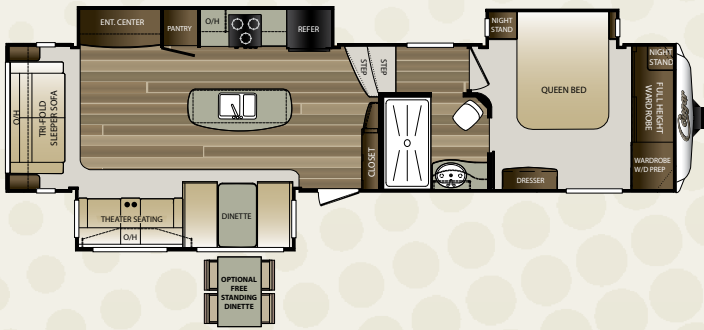
Cougar

by Keystone



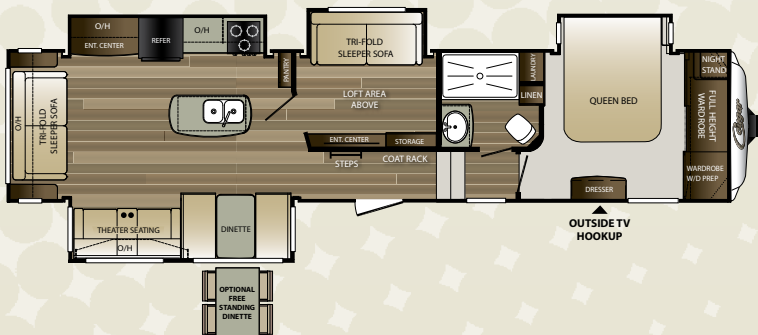
326RDS LENGTH: 38' 1" WEIGHT: 10,462

326SRX LENGTH: 37' 7" WEIGHT: 9,930



333MKS LENGTH: 38' 1" WEIGHT: 10,315

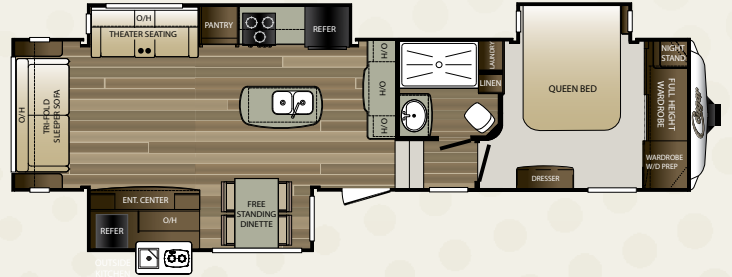
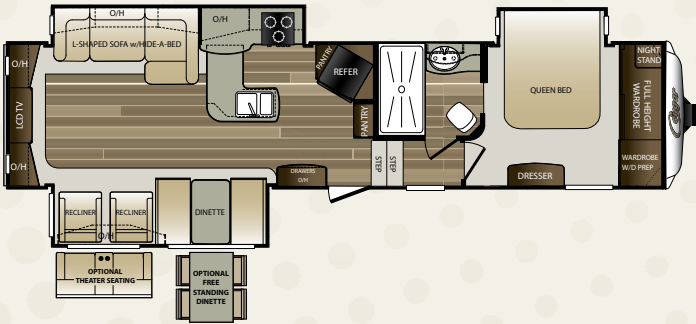
336BHS LENGTH: 38' WEIGHT: 10,325



359MBI NEW LENGTH: 40' 1" WEIGHT: 11,245

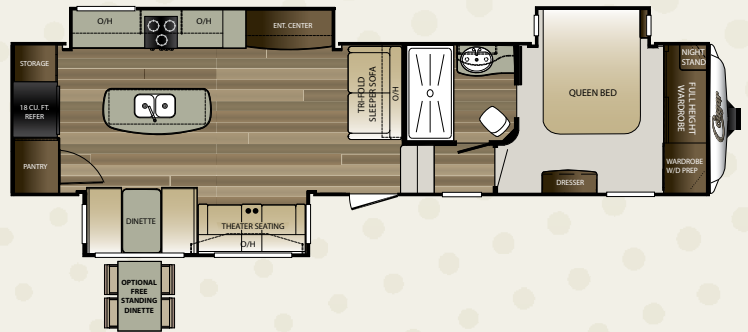
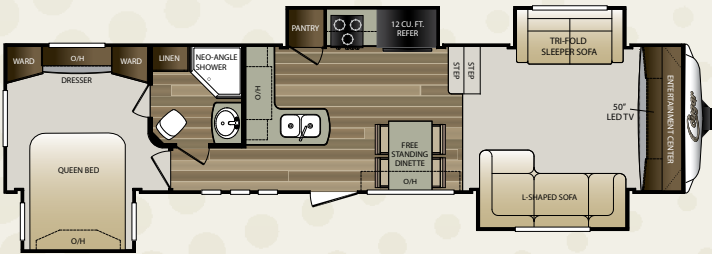
MID-PROFILE FIFTH WHEELS

MID-PROFILE FIFTH WHEEL FLOOR PLANS



327RES LENGTH: 37' 9" WEIGHT: 10,495

327RLK NEW LENGTH: 37' 2" WEIGHT: 10,315



337FLS LENGTH: 38' 1" WEIGHT: 9,998

341RKI LENGTH: 38' 1" WEIGHT: 10,375

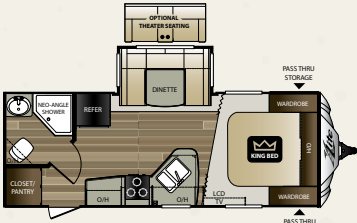
Stay in Touch



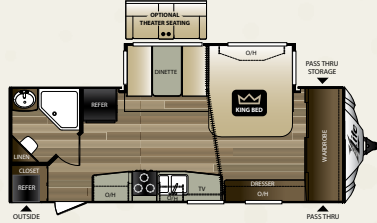
Cougar is always just a touch away. You'll find 360 virtual tours, location of your nearest dealer, photos, videos and all of the latest information about Cougar on our easy to navigate website. Everything you need can be accessed anytime, day or night, from home or on the road. You can also find us on the Keystone RV facebook.

www.keystonerv.com/Cougar

X-LITE TRAVEL TRAILER FLOOR PLANS



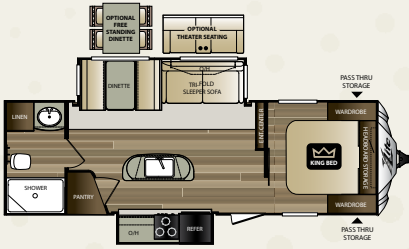
21RBS LENGTH: 25' 9" WEIGHT: 5,201



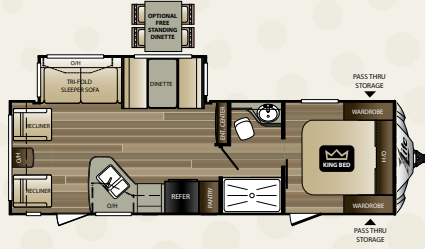
24RBS NEW LENGTH: 29' 6" WEIGHT: 5,475



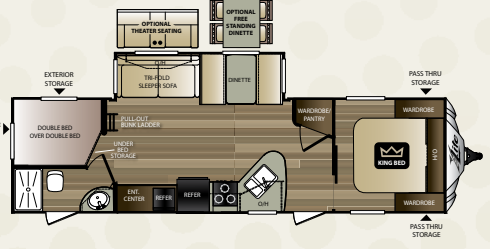
25RDB LENGTH: 29' 6" WEIGHT: 5,755



26RBI LENGTH: 30' 2" WEIGHT: 6,100

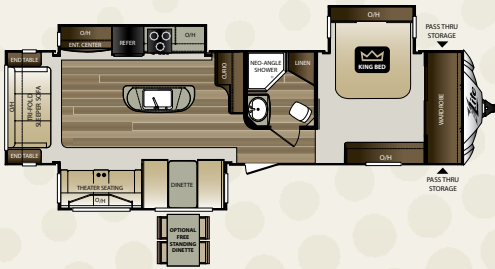


28RLS LENGTH: 31' WEIGHT: 6,150



29BHS NEW LENGTH: 34' 11" WEIGHT: 6,760

Ground Control TT Ground Control TT Equipped



30RLI LENGTH: 36' WEIGHT: 7,704

Ground Control TT Ground Control TT Equipped

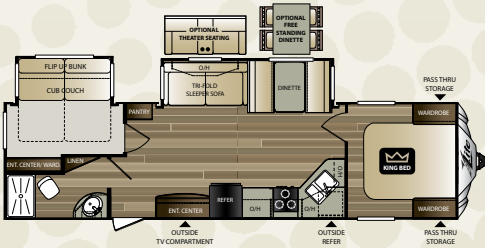


31SQB LENGTH: 35' 11" WEIGHT: 7,115



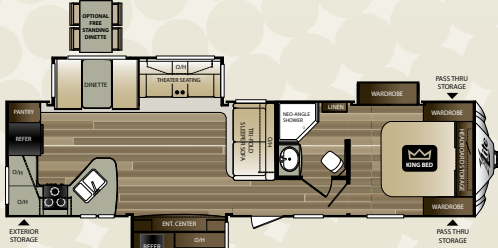
32FBS LENGTH: 35' 10" WEIGHT: 7,400

Ground Control TT Ground Control TT Equipped



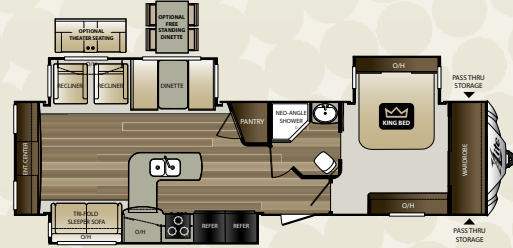
32FKB NEW LENGTH: 35' 10" WEIGHT: 7,145

Ground Control TT Ground Control TT Equipped



33MLS LENGTH: 36' 2" WEIGHT: 7,675

Ground Control TT Ground Control TT Equipped

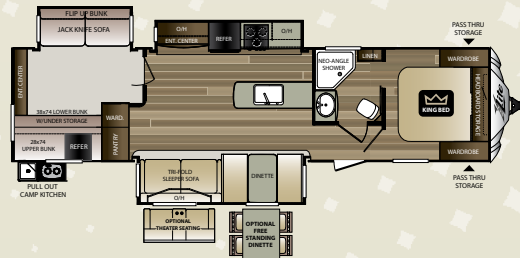


33SAB LENGTH: 36' 10" WEIGHT: 8,390

Ground Control TT Ground Control TT Equipped



X-LITE TRAVEL TRAILERS



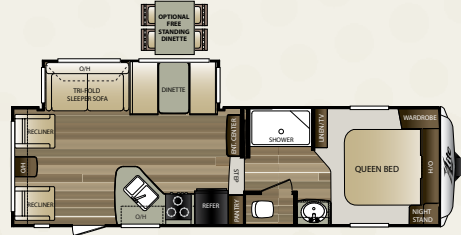
34TSB LENGTH: 37' 5" WEIGHT: 8,075

Ground Control TT Ground Control TT Equipped

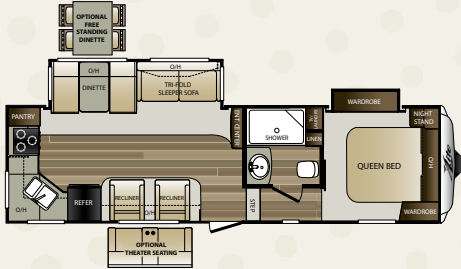
X-LITE FIFTH WHEEL FLOOR PLANS



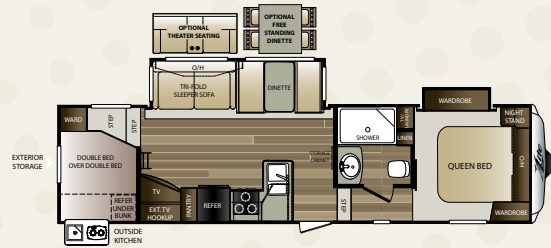
25RES LENGTH: 28' 11" WEIGHT: 7,035



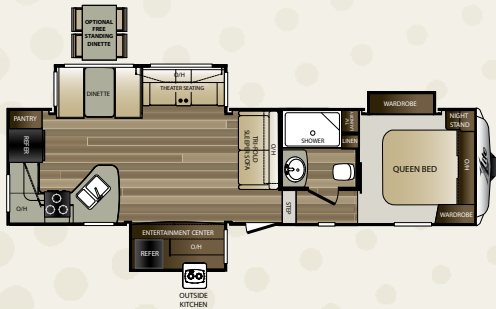
26RLS LENGTH: 29' 4" WEIGHT: 6,770



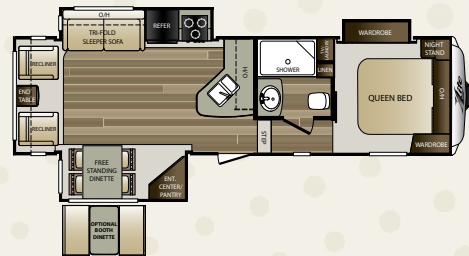
27RKS LENGTH: 30' 5" WEIGHT: 7,150



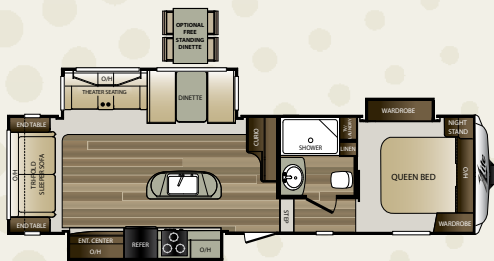
28RDB LENGTH: 32' 11" WEIGHT: 7,648



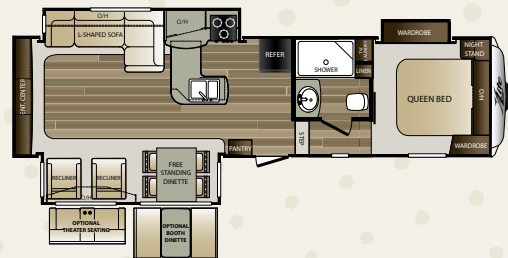
28RKS LENGTH: 32' 11" WEIGHT: 8,170



28SGS LENGTH: 30' 10" WEIGHT: 7,756



29RLI LENGTH: 32' 7" WEIGHT: 7,814



29RES LENGTH: 32' 11" WEIGHT: 8,020



www.keystonerv.com/cougar-xlite



X-LITE FIFTH WHEELS

WEIGHTS AND MEASUREMENTS

COUGAR MID-PROFILE FIFTH WHEELS

MODEL	SHIPPING WEIGHT	CARRYING CAPACITY	HITCH	LENGTH*	EXTERIOR WIDTH	HEIGHT	FRESH WATER	WASTE WATER	GRAY WATER	LPG	AWNING(S)
326RDS	10448	1792	1840	38' 1"	8'	13' 2"	60	38	76	60	20'
326SRX	9893	2767	2260	37' 7"	8'	13' 2"	60	38	76	60	19'
327RES	10538	1687	1825	37' 9"	8'	12' 3"	60	38	76	60	15'/11'
327RLK	10404	2176	2180	37' 2"	8'	12' 3"	60	38	76	60	13'
333MKS	10348	2032	1980	38' 1"	8'	12' 3"	60	38	76	60	14'/11'
336BHS	10384	1851	1835	38' 0"	8'	12' 6"	60	38	76	60	12'/11'
337FLS	10067	2498	2165	38' 1"	8'	13' 2"	60	38	76	60	16'
341RKI	10405	1815	1820	38' 1"	8'	13' 2"	60	38	76	60	14'/11'
359MBI	11205	2795	2000	40' 1"	8'	13' 2"	60	38	76	60	15'/11'

COUGAR X-LITE TRAVEL TRAILERS

MODEL	SHIPPING WEIGHT	CARRYING CAPACITY	HITCH	LENGTH*	EXTERIOR WIDTH	HEIGHT	FRESH WATER	WASTE WATER	GRAY WATER	LPG	AWNING(S)
21RBS	5234	1966	550	25' 9"	8'	11' 4"	43	30	30	40	16'
24RBS	5558	1942	725	26' 11"	8'	11' 4"	43	30	30	40	17'
25RDB	5791	2009	755	29' 6"	8'	11' 4"	43	30	60	40	16'
26RBI	6106	1694	710	30' 2"	8'	11' 4"	43	30	60	40	19'
28RLS	6220	1580	760	31'	8'	11' 4"	43	30	60	40	20'
29BHS	6715	1485	845	34'	8'	11' 4"	43	30	60	40	20'
30RLI	7866	1634	1055	36'	8'	11' 4"	43	30	60	40	12'/11'
31SQB	7051	1949	920	35' 11"	8'	11' 4"	43	30	60	40	19'
32FBS	7546	1954	965	35' 10"	8'	11' 4"	43	30	60	40	17'
32FKB	7350	2450	1005	34' 11"	8'	11' 4"	43	30	60	40	20'
33MLS	7767	1875	750	36' 2"	8'	11' 4"	43	30	60	40	12'
33SAB	8358	1487	1045	36' 10"	8'	11' 4"	43	30	60	40	12'
34TSB	8208	1392	1005	37' 5"	8'	11' 4"	43	30	60	40	8'/11'

COUGAR X-LITE FIFTH WHEELS

MODEL	SHIPPING WEIGHT	CARRYING CAPACITY	HITCH	LENGTH*	EXTERIOR WIDTH	HEIGHT	FRESH WATER	WASTE WATER	GRAY WATER	LPG	AWNING
25RES	7099	2901	1405	28' 11"	8'	11' 11"	43	30	60	60	15'
26RLS	6890	3110	1270	29' 4"	8'	11' 11"	43	30	60	60	13'
27RKS	7176	2824	1355	30' 5"	8'	11' 11"	43	30	60	60	16'
28RDB	7722	2278	1475	32' 11"	8'	11' 11"	43	30	60	60	19'
28RKS	8304	1696	1515	32' 11"	8'	11' 11"	43	30	60	60	20'
28SGS	7779	2221	1480	30' 10"	8'	11' 11"	43	30	60	60	10'
29RLI	7845	2155	1610	32' 7"	8'	11' 11"	43	30	60	60	10'
29RES	8071	1929	1380	32' 11"	8'	11' 11"	43	30	60	60	10'/11'

Product information is as accurate as possible as of the date of publication of this brochure. Features, floor plans, and specifications are subject to change without notice. Please also consult Keystone's web site at keystonerv.com for more current product information and specifications. Tow Vehicle Disclaimer. CAUTION: Owners of Keystone recreational vehicles are solely responsible for the selection and proper use of tow vehicles. All customers should consult with a motor vehicle manufacturer or their dealer concerning the purchase and use of suitable tow vehicles for Keystone products. Keystone disclaims any liability or damages suffered as a result of the selection, operation, use or misuse of a tow vehicle. KEYSTONE'S LIMITED WARRANTY DOES NOT COVER DAMAGE TO THE RECREATIONAL VEHICLE OR THE TOW VEHICLE AS A RESULT OF THE SELECTION, OPERATION, USE OR MISUSE OF THE TOW VEHICLE. *Length is defined as the distance from the centerline of the hitch pin/coupler to rear bumper of the trailer.

STANDARDS AND OPTIONS

	XLTT	XLFW	COUGAR
INTERIOR			
Residential shower/tub surround	S	S	S
Power vent in bath	S	S	S
GFI receptacles in the bathroom	S	S	S
Residential medicine cabinet with mirror	S	S	S
Skylight over tub/shower	S	S	S
King bed	S	—	—
Under bed storage w/ gas struts (most floorplans)	S	S	S
Central Command Center for monitoring all tanks and battery, awning, slide-outs, lights, etc.	S	S	S
Seamless linoleum w/ cold crack protection	S	S	S
Home theatre sound bar	—	—	S
Satellite/Cable hook-up	S	S	S
12V charging station	S	S	S
15,000 BTU ducted A/C	S	S	S
2nd, 13,500 BTU air conditioner (most models)	O	O	O
50 Amp service, pre-wired and prepped for 2nd air conditioner	O	O	S
Washer/Dryer prep (327RES, 327RLK, 333MKS, 341RKS, 359MBI)	—	—	S
35,000 BTU auto-ignition furnace	S	S	S
Industry best, in-floor ducted heat	S	S	S
Residential cabinet hardware	S	S	S
"Smart Slide" free-standing dinette	O	O	O
Solid surface countertops	S	S	S
8 cu ft refrigerator (12 cu. ft. in 337FLS, 341RKI)	S	S	S
Stainless steel deep oversized kitchen basin with sink cover	S	S	S
Oversized pots and pans drawer (most models)	S	S	S
Residential full-extension, steel ball bearings drawer guides	S	S	S
Lighted range hood with exhaust fan	S	S	S
3 burner high output gas range	S	S	S
Theater seating * (most floor plans)	O	O	O
Fireplace * Most Floor plans	O	O	S
Interior entry motion light	S	S	S
MCD roller shades	—	—	S
Pleated shades throughout	S	S	—
Max Air fan	—	—	S
EXTERIOR			
Max Turn Technology front cap	—	S	S
MOR/ryde CRE 3000 Suspension	—	S	S
E-Z lube hubs on axles	S	S	S
Front cap with LED docking lights	S	S	S
Rock Guard Protection on front cap	S	—	—
Rear bumper storage w/ end caps	S	S	S
Aluminum framed sidewalls, floors, front, rear and slide rooms	S	S	S
Black trim safety glass windows	S	S	—
All windows in main slide out open	S	S	S

	XLTT	XLFW	COUGAR
EXTERIOR (CONT.)			
4 point auto electric level up* (Most Floor plans)	S	S	S
Outside shower	S	S	S
Space for dual batteries	S	S	S
LED exterior lights	S	S	S
Outside TV hookup with 110 recep, and cable prep	S	S	S
All weather outside speakers	S	S	S
Cable & satellite prep	S	S	S
Water heater bypass for easy winterization	S	S	S
R-15 astro-foil in slide out floors	S	S	S
R-15 astro-foil in underbelly	—	—	S
Fully Heated and Enclosed Underbelly with Enclosed Dump Valves	S	S	S
Fully walkable roof and fully walkable slide roof	S	S	S
5" fabricated stamped steel roof trusses	S	—	—
One-piece seamless tan T.P.O. roof	S	S	S
Vaulted interior ceiling	S	—	—
4" extra long rain spouts	S	S	S
Splash guard under slide	S	S	S
T-Mold bulb seals on all slide outs to keep slider sweeps	S	S	S
Slam latch baggage doors	—	S	S
Oversized exterior baggage doors	S	S	S
XL Pass through storage with entertainment hook-up	S	S	S
Fold down bike/storage rack (N/A 326SRX)	—	—	S
SAFETY			
Carbon monoxide detector	S	S	S
Fire extinguisher	S	S	S
LP sensor	S	S	S
Smoke detector	S	S	S
Manual backup on all main slide outs	S	S	S
Spare tire and Carrier	S	S	S
Egress windows	S	S	S
CAMPING IN STYLE PACKAGE			
Laminated Side Walls with 5 Sided Aluminum Superstructure	S	S	S
3/8" Walkable Roof Decking	S	S	S
Fiberglass Front Cap W/ Hitch Vision (Hitch Vision FW only)	S	S	S
Full Size Spare Tire	S	S	S
8 Cubic Ft. Gas/Electric Refrigerator	S	S	S
.9 Cubic Ft. Stainless Steel Microwave	S	S	S
12,000 BTU Rapid Recovery 6 Gallon	S	S	S
Gas/Electric Water Heater	S	S	S
Aluminum Wheels	S	S	S
Pre Drilled and Screwed Cabinetry	S	S	S
Battery Disconnect Switch	S	S	S
LED Television (Sizes Vary by Floor plan)	S	S	S
Omni-Directional TV Antenna	S	S	S

	XLTT	XLFW	COUGAR
VALUE PACKAGE			
LED Lit Electric Patio Awning	S	S	S
12 Volt Multizone AM/FM/MP3/CD/DVD/	S	S	S
Bluetooth Stereo With Int./Ext. Speakers	S	S	S
Furion Backup/Observation Camera Prep	S	S	S
Furion Portable Solar Panel Prep	S	S	S
Black Tank Flush	S	S	S
XL Folding Grab Handle	S	S	S
Exterior Ladder	S	S	S
Porcelain Foot Flush Toilet	S	S	S
LED Interior Lights	S	S	S
Hybrid Alumina-Tread Folding Entry Step	S	S	S
Dual 30LB LP Bottles	S	S	S
LP Quick Disconnect	S	S	S
Entry Door Step Light	S	S	S
POLAR PACKAGE PLUS			
35,000 BTU Continuous Flow Ducted Furnace	—	—	S
Forced-Air Heated and Enclosed Underbelly	—	—	S
Astrofoil Insulated Slide Floors	—	—	S
Astrofoil Insulated Underbelly	—	—	S
Enclosed Dump Valves	—	—	S
POLAR PACKAGE			
35,000 BTU Continuous Flow Ducted Furnace	S	S	—
Forced-Air Heated and Enclosed Underbelly	S	S	—
Astrofoil Insulated Slide Floors	S	S	—
Enclosed Dump Valves	S	S	—
ROYALTY PACKAGE			
High Gloss Champagne Sidewalls	—	—	S
Frameless Window Upgrade	—	—	S
Cougar Multifunction Quick Camp Remote	—	—	S
Champagne Sidewalls	—	—	S
Solid Surface Countertops	—	—	S
COUGAR PACKAGE			
High Rise Pull Out Faucet	—	—	S
Raised Panel Hardwood Cabinetry Upgrade	—	—	S
15K BTU Standard Main Air Conditioner	—	—	S
50 Amp Service/ Wired and Framed for Second AC	—	—	S
MCD Roller Shade Upgrade	—	—	S
Cougar Orthopedic Sleep System Mattress	—	—	S
16 inch wheel with "E" Rated Tires	—	—	S
21" Stainless Steel Oven Upgrade	—	—	S
Raised Panel Hardwood Refrigerator Front	—	—	S
LG Solid Surface Galley Counter tops	—	—	S

LEGEND

XLTT = X-LITE TRAVEL TRAILERS
XLFW = X-LITE FIFTH WHEELS
COUGAR = MID-PROFILE FIFTH WHEELS
S = STANDARD | **O** = OPTIONAL | **—** = NOT AVAILABLE

Standard features and options are subject to change without notice.

DECOR OPTIONS

Cougar and Cougar X-Lite offers two different interior decor options. Choose between Cashmere and Twig.

CASHMERE



TWIG



OUR COMMITMENT TO DELIVERING THE BEST PRODUCT IN THE INDUSTRY MAKES COUGAR **FIRST** IN ITS CLASS.

Launched in 1998, the Keystone Cougar product line was the first introduction into the emerging "half ton light" series. Due to the popularity of half ton trucks, Cougar quickly found its place as a product that offered more innovation, quality and affordability than existing brands at that time. Within two short years Cougar became the #1 mid-profile fifth wheel in North America!

Today, Cougar remains focused on 1/2 ton and 3/4 ton product offerings. Our commitment to delivering the best product in the industry makes Cougar **FIRST** in its class.

Fit and Finish – A Quality Circle Award Winner for the past 10 consecutive years. Cougar's Fit and Finish Speaks for itself.

Innovation – Patented features such as Hitch Vision and true half ton towable fifth wheels floorplans that can't be duplicated. Cougars Innovation is second to none.

Residential – With Residential features such as Raised Panel Hardwood Cabinets, Chef's Gourmet Kitchens, and Walk-in Pantries. Your Cougar Residential features will make you feel like you are at home.

Storage – With Class- leading storage both inside and out, you will always have a place to store your camping gear while on the road.

Towability – Known as the most towable unit in its class, All Cougar floorplans have frames engineered specifically for that floorplan and proper axle placement to ensure that your Cougar is always safe while in tow.

DSI WINNER / 2007 / 2008 / 2009 / 2010 / 2011 / 2012 / 2013 / 2014 / 2015



SINCE 1998

Cougar has been the pinnacle of excellence in the RV industry, earning the DSI award for 9 consecutive years. Come find out why...

THE DSI (DEALER SATISFACTION INDEX) AWARD RATES THE LEVEL OF SATISFACTION THE DEALERS HAVE IN A MANUFACTURER. IT RATES MANUFACTURERS IN MANY AREAS SUCH AS: PRODUCT DESIGN, PRODUCT RELIABILITY & QUALITY, WARRANTY SUPPORT, AND PARTS SUPPORT.



KEYSTONE RV RECOMMENDS BUYING LOCALLY

It's up to you where you purchase your new Cougar, but may we suggest your local dealer? Not only does it help your local economy and provide jobs, but it will also give you an opportunity to develop a service relationship with someone that will come to know you and your coach. Congratulations on finding the best built, best equipped, best value in the industry, and happy travels!

YOUR LOCAL DEALER:

Cougar
by Keystone

WWW.KEYSTONERV.COM/COUGAR

2642 Hackberry Drive | PO Box 2000
Goshen, IN 46527-2000
(574) 535-2100

 **Keystone RV Company**
www.keystonerv.com

Go RVing
Life's A Trip

Member
RVIA
RECREATION VEHICLE
INDUSTRY ASSOCIATION

APRIL 2017