

1997

BRAVE®

*People who
value substance
as well as style
sometimes find both
in the same place.*



33RQ-DL



The real beauty of our new design is that it's built to stay looking this way.

Oddly enough, when it comes to naming leading-edge designers, motor home manufacturers have been overlooked. But we expect more than a few heads to turn the first time a new Winnebago Brave rolls by.

Bus styling.

The 1997 Brave has a sleek, bus-style front end that's new from its roof cap to its lower fiberglass front and fascia. For starters,

it has a more vertical windshield. The new compartment door styling includes single paddle latches and gas strut supports on most models. And the bus-style vertical pantograph wipers clean a larger area than conventional wipers.

More spacious. As you might suspect of a motor home coming from Winnebago Industries, there are some very sound reasons behind all this high style. The truth is, the new

front end is more open and gives the cab a spacious look and feel.

New slideout. As if a whole new look won't create enough excitement, there's

also a new 33-foot Brave model with a slideout. Its HWH® room extension mechanism provides outstanding reliability in the tradition of our Adventurer® and Vectra® slideouts.



29RQ. One of the Brave's upscale touches is the non-woven fabric ceiling. It's attractive, durable and easy to clean.

Still solid. In spite of all these changes, you'll be glad to know our solid Midwestern values haven't changed at all. We still believe there's wisdom in making over 80% of everything that goes into our motor homes. And we still believe in rigorous testing and safety standards. All the things that have earned the Brave one of the highest resale values in its class.

We're spotlighting some of the details that set us apart.

As part of our ongoing improvement policy, we put our motor homes in a dark room, turn on only the interior lights and check the effectiveness of each for reading, cooking, watching TV, etc. Using what we learn, we add and reposition lighting where possible.



Opticlear lenses were installed on the lights under cabinets to shed more light where you read and work.



Courtesy lights with conveniently placed wall switches softly light the way when you're up and around in the dark.



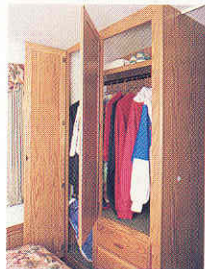


31RQ. The roomy living space incorporates style and comfort with new optional pleated window shades. New dampening directional A/C vents maximize cool air distribution.

31RQ. The cockpit includes a redesigned beverage tray and an available driver's door for easier access. Redesigned seats provide driver's side lumbar support and larger armrests for added comfort.



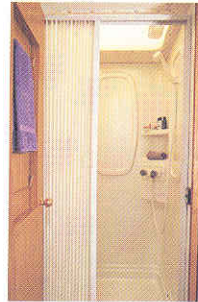
33RQ-DL. This spacious exterior storage compartment simplifies loading and unloading. New full-hinged panels feature single paddle latches.



33RQ-DL. This generous, in-bedroom wardrobe is an efficient space for folded and hanging clothes alike.



31RQ. A solidly-built Norcold refrigerator with centralized controls is included in the galley, along with a larger microwave.



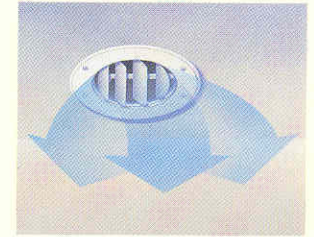
31RQ. This bathroom stays free of clutter thanks to a set of recessed towel racks behind the door. Pleated folding shower doors are standard on all models except the 29RQ.



31RQ. The dinette features storage compartments overhead and below, an available coffeemaker and opticlear lenses.



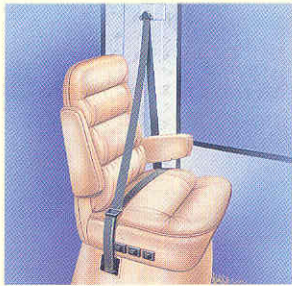
Hinged valance panels held open by gas struts allow easy access to most exterior storage compartments. The single latch can be opened with one hand.



New dampening directional vents and our ducted roof air system give you greater control over cooling, to increase comfort and energy efficiency.



A water test is conducted at the end of the assembly line to make sure each unit is watertight. We use 160 spray heads to simulate an intense rainfall.



Our three-point seat belts connect directly to the seat frame in the cab and are bolted to the steel cab substructure. Always use your seat belt.



A third exterior brakelight is a safety feature other manufacturers only put on high-end models. We have one on all our motor homes.



Select appliances are secured with steel tie-downs, an exclusive Winnebago Industries safety feature. It's not something we're required to do. It just makes sense.

Some of its most impressive features are things

Computer simulated or physical drop testing, performed on the various models, is unique to Winnebago Industries. This testing aids in evaluating structural integrity, panels/panel joints, appliance attachments and window/door operations.

A driver's door and blue metallic lower valance paint are available as part of the DL package or as a separate option on all models.

We fasten the sidewall to the frame and cab using our interlocking joint system. This makes a more durable, stable and better-sealed body.

The new bus-style front has a more vertical, steel-mounted windshield. A pantograph wiper system clears a larger area than conventional wipers.

Not only will you find three-point shoulder and lap seat belts with retractors in the cab, lap belts are standard in selected areas of the coach as well.

Our smooth, one-piece fiberglass skin is strong, easy to clean and free of exposed fasteners.

We letter code our wiring every three inches to make service diagnosis easier and faster.

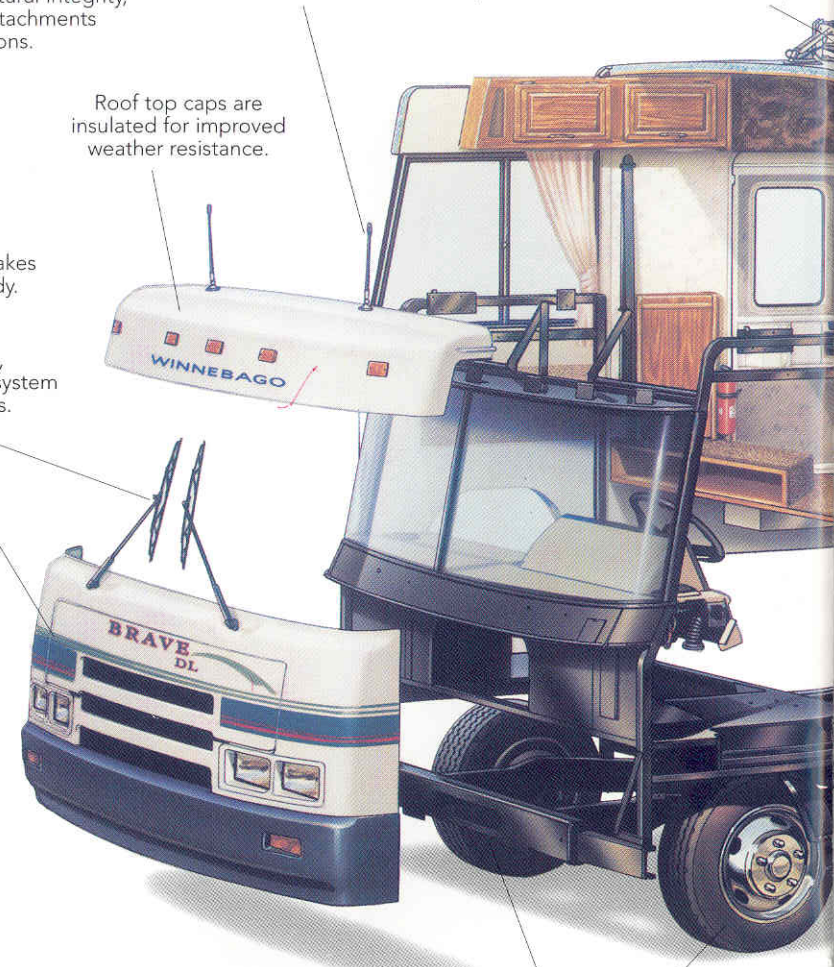
New rubber matting and a non-slip tread strip at the entrance step make getting in and out easier.

As an added safety feature, cabinets are secured to metal plates embedded in the sidewalls and roof.

New 30" CB radio antenna offers improved reception.

A satellite TV system is available, with or without a receiver, and all units are system ready (receiver not available in Canada).

Roof top caps are insulated for improved weather resistance.



Locks are endurance tested and corrosion tested.

A computer evaluates every unit for wheel alignment and checks 75 chassis points to ensure proper handling.

you'll never see.

Block foam insulation increases R-value and decreases noise inside the coach.

Every unit is pre-wired for an available roof air conditioner.

Our seamless fiberglass roof won't tear like rubber and comes with our standard 10-year limited parts and labor warranty, the only one in the industry.

New directional, dampened vents and our available ducted roof air system give you greater control over cooling. An additional A/C vent is located in the bathroom.

We developed Thermo-Panel® sidewall construction which combines light weight, structural integrity and durability.

To prevent leaks, windows are sealed with a non-hardening butyl sealant.

New interior lighting enhancements include courtesy lights along the floor, a larger skylight in the bath area and opticlear lenses on lights beneath upper cabinets.

We look for materials that combine light weight and strength, like the welded aluminum framework. It's strong enough to pass a drop test, but it also increases fuel efficiency and weight-carrying capacity.

Exterior compartment doors have new full-hinged valance panels with gas struts on most models and a single latch for easy opening. Doors are laminated, with fiberglass skin on both sides of block foam insulation, for energy efficiency and sound absorption.

Seamless rotocast holding tanks are enclosed, heated and make the best use of available space.

We manufacture our own molded rear wheel wells which are non-corrosive and absorb sound better than metal.



The newly-available slideout room on the 33RQ features mounting plates that are secured to the steel substructure for durability and structural integrity.

To maintain quality control, we make over 80% of everything that goes into our motor homes.

We laser-align the metal substructure and weld it directly to the chassis frame rails to form a square foundation.

To prevent corrosion, we electrocoat all steel in the storage compartments and steel cab substructure.

Towing a boat or car? A Class II trailer hitch is now standard.



Why do people buy our motor homes? Is it our warranty? Our nationwide dealer network? Or is it those WIT Club caravans? Socializing is an important part of motorhoming. And we don't know a more fun bunch of people than our Winnebago-Itasca Travelers (WIT) Club.



There are more than 250 chapters across the U.S.A. and Canada. Many members enjoy attending rallies and traveling together in caravans. A highlight of every summer is the Grand National Rally when thousands of members meet at our campground in Forest City.

In addition to social activities, WIT Club members enjoy many special benefits like professional trip planning, mail forwarding and discounts.

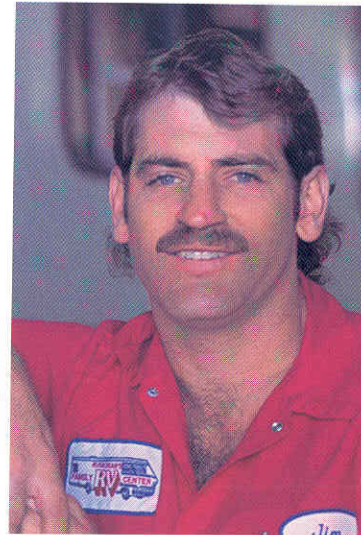
How well are our motor homes put together? Ask

Since we come from a small town, we've always believed in the direct approach. When you want to find out something, go right to the source. And when you want to find out about a motor home, who better to ask than someone who works on them day in and day out?

Ask the service manager.

The service manager at your Winnebago Industries dealer has worked on a lot of different types of motor homes and is a wellspring of information. He'll be glad to share with you which motor homes are built the best. Which ones do service technicians find easiest to work on? (Remember, less labor means lower labor costs.) Which company has the most comprehensive warranty? And which motor homes would he recommend to a friend? We're confident Winnebago Industries is the name you'll hear most often.

Service training. Customers tell us the quality of dealer service has a big influence on the owner's overall satisfaction with their motor home. To help keep that quality high, we conduct an ambitious training program in the field and at our Forest City plant. Throughout the year you'll find service technicians from all over the country attending week-long training sessions on such topics as 110-volt generator service, body repair and appliance service.



*"The best hands-on training I've seen."
— Service Technician Jim Bithell, Russ
Dean's Family RV Center, Pasco, WA.*

Parts availability.

Of course, even an ace service technician's hands are tied if the parts he needs aren't available. So we've created an extensive warehousing and distribution system that carries parts for older models, too. According to our Parts Computer Network, 99.3% of our normal stock items are available whenever a dealer calls.

someone who takes them apart.

Warranty protection. We've always felt the best service policy is to keep the need for service to a minimum. That's why we build our motor homes better. And because we go the extra mile during manufacturing, we can back our motor homes with the strongest warranty in the industry. You could say our warranty starts where most others leave off. Because in addition to basic 12-month/15,000-mile coverage, we also have a 36-month/36,000-mile limited warranty on lamination. And our standard 10-year limited parts and labor warranty on the roof is exclusive in the industry.

Unlike most manufacturers, we also cover the appliances and equipment we install, so you can count on the convenience of one-stop service for warranty repairs. Expert service people are ready to help you at our many authorized dealers throughout the U.S. and Canada.

Preferred Care Program. Every new Winnebago Industries motor home comes with a one-year membership in our Preferred Care Program. This newly enhanced 24-hour nationwide assistance plan covers emergency dispatching for road service and towing, equipment service questions, service provider recommendations, service appointments and directions to service locations. Other free services include jump-starts, tire changing, fuel delivery and lockout assistance. A special



After the first year, membership in the Preferred Care Program can be extended by joining the WIT Club.

24-hour toll-free number connects you with a staff of experienced RV service professionals, backed by our network of more than 20,000 prequalified service providers.

The less you have to worry about, the more time you have for fun. And we'll do our best to give you a safe, enjoyable travel experience. At Winnebago, your peace of mind is worth the effort.



The Winnebago Motorsports Team puts racing fans on the inside track of the fastest growing sport in America. Members are invited to participate in special Pit Road Events, including driver autograph sessions, at selected NASCAR® Races throughout the season. Benefits also include a newsletter and special Motorsports merchandise.



At Winnebago Industries, we've been auto racing fans for years. We're the Official Motor Homes of NASCAR, and we're associated with several NHRA®



drag racing teams. If you'd like to join the

Winnebago Motorsports Team, just call us at 1-800-643-4892, ext. 2.

1997 Brave Specifications

1997 BRAVE	25RC	28RC	29RQ	31RQ	33RQ
Length	25'1"	27'7"	29'4"	31'3"	32'7"
Wheelbase	158.5"	158.5"	178"	190"	216"
Fuel Capacity - Chevrolet	40 gal.	60 gal.	78 gal.	78 gal.	78 gal.
Fuel Capacity - Ford	NA	NA	75 gal.	75 gal.	75 gal.
Fresh Water Capacity w/Heater	64 gal.	64 gal.	56 gal.	56 gal.	56 gal.
Holding Tank Capacities Black/Gray	36/32 gal.	36/32 gal.	30/34 gal.	30/34 gal.	35/40 gal.
LP Capacity	60 lbs.	60 lbs.	60 lbs.	100 lbs.	100 lbs.
Exterior Height w/Roof Air - Chevrolet†	10'10.5"	10'11"	11'1"	11'1"	11'2"
Exterior Height w/Roof Air - Chevrolet Optional†	10'10.5"	10'11"	11'1"	11'1"	11'2"
Exterior Height w/Roof Air - Ford†	NA	NA	11'2"	11'1"	11'2"
Exterior Width	8'	8'	8'	8'	8'
Interior Height	6'8"	6'8"	6'8"	6'8"	6'8"
Interior Width	7'7"	7'7"	7'7"	7'7"	7'7"
Exterior Storage	66.8 cu. ft.	73.96 cu. ft.	91.8 cu. ft.	99.5 cu. ft.	100.7 cu. ft.
Exterior Storage - (w/Slide Room Option - 33RQ Only)	NA	NA	NA	NA	91.2 cu. ft.
GVWR - Chevrolet Standard♦ Required 14,800 lbs. GVWR Registered in CA	12,300 lbs.♦	14,800 lbs.	14,800 lbs.	14,800 lbs.	14,800 lbs.
GVWR - Chevrolet Optional	14,800 lbs.	NA	NA	NA	16,500 lbs.
GVWR - Chevrolet Diesel Optional	12,300 lbs.	14,800 lbs.	14,800 lbs.	14,800 lbs.	NA
GVWR - Ford Optional	NA	NA	15,200 lbs.	15,200 lbs.	17,000 lbs.

S Standard
O Optional

	25RC	28RC	29RQ	31RQ	33RQ
AUTOMOTIVE					
Chassis - Chevrolet 7.4L fuel-injected gasoline engine, automatic transmission w/overdrive & cooler, front suspension: coil spring, rear suspension: leaf spring, 630-CCA batt./105-amp. alt.	S	S	S	S	S
Chassis - Chevrolet 6.5L turbo diesel engine, automatic transmission w/overdrive & cooler, front suspension: coil spring, rear suspension: leaf spring, 630-CCA batt./105-amp. alt.	O	O	O	O	O
Chassis - Ford 7.5L fuel-injected gasoline engine, automatic transmission w/overdrive & cooler, front suspension: mono-beam axle w/leaf spring, rear suspension: multi-leaf spring, 650-CCA batt./130-amp. alt.			O	O	O
Chevrolet engine exchange (Vortec) - 290 HP, 124-amp. alt.	O	O	O	O	O
Shocks (gas) - front, Chevrolet	O	O	O	O	O
Springs (air) - rear auxiliary	O				
Front shocks*/steering stabilizer - Chevrolet only	O	O	O	O	O
Tires (radial) - w/spare	S	S	S	S	S
DL UPGRADE					
Deluxe upgrade package*				O	O
Add: additional throw pillow in couch & bedroom, cab side trim panels - passenger (2), driver (1), driver's door, additional painting on lower exterior, wainscoting to queen bed module, water purification system w/separate galley faucet, black & gold molding - galley & bath countertops					
Exchange: overhead cabinet doors get raised panel inserts, upgrade cabinet pulls, decorative glass style, pleated shades in lounge, micro-mini blinds in galley, day/night shades in bedroom, upgrade couch & dinette style, wheel liners, decorative style wall lamp, single control galley faucet					
DRIVER CONVENIENCES					
Battery charge control w/battery disconnect - dual, auto.	S	S	S	S	S
Cigarette lighter/12-V electrical supply	S	S	S	S	S
Convenience tray	S	S	S	S	S
Cruise control	S	S	S	S	S
Curtain w/track - front wrap-around	S	S	S	S	S
Driver's door	O	O	O	O	O
Heating/air-conditioning - automotive blend air system	S	S	S	S	S
Hood release - exterior key locks	S	S	S	S	S

S Standard
O Optional

	25RC	28RC	29RQ	31RQ	33RQ
ENTERTAINMENT					
Lap belts - in designated areas	S	S	S	S	S
Map light, map pockets & floor mats	S	S	S	S	S
Mirrors (rear view) - low mounted, include convex element	S	S	S	S	S
Mirrors (rear view) - low mounted, elec. remote w/defrost	O	O	O	O	O
Seat - six-way manual adjust driver's seat	O	O	O	O	O
Seats w/3-point retracting cab seat belts - reclining high-back design, hinged armrests, lumbar support, swivel/slide pedestal	S	S	S	S	S
Start circuit - auxiliary	S	S	S	S	S
Steering - power assisted w/tilt wheel	S	S	S	S	S
Storage cabinet (front overhead)	S	S	S	S	S
Sunvisors - w/map strap	S	S	S	S	S
Windows - sliding, w/screens	S	S	S	S	S
Windshield wipers (intermittent)	S	S	S	S	S
ENTERTAINMENT					
C.B. prep kit - antenna, 12-V power connection	O	O	O	O	O
Entertainment center (patio)* - DC receptacle, 110-V outlet, TV jack, radio antenna, AM/FM radio cassette, speakers (2), TV table, locking door	O	O	O	O	O
Inverter* - 130-watt for TV/VCR	O	O	O	O	O
Stereo power switch - for main or auxiliary battery use	S	S	S	S	S
Stereo (cab) - AM/FM/cassette deck w/speakers (4)	S	S	S	S	S
Stereo w/CD player (cab) - AM/FM w/speakers (4)	O	O	O	O	O
TV* (13" color) w/remote - TV cabinet, located in bedroom			O	O	O
TV* front (19" color) w/remote	O	O	O	O	O
TV* front (19" color) & VCR w/remote - switch. sys., cab. exch.	O	O	O	O	O
TV enhancement package - antenna (amplified), DC receptacles (2), interior jacks (2), coax wiring, cable input, exterior antenna jack, TV shelf, stand or cabinet	S	S	S	S	S
Satellite system pre-wiring	S	S	S	S	S
Satellite system* - with or without receiver	O	O	O	O	O
SLIDEOUT					
Slideout room (driver's side couch)* - overhead cabinet w/fabric covered doors, exterior room cover					O

S Standard
O Optional

25RC 28RC 29RQ 31RQ 33RQ

INTERIOR	25RC	28RC	29RQ	31RQ	33RQ
Bed (front overhead)*	O	O			
Cabinets - wood-framed doors, brass insert above countertops	S	S	S	S	S
Carpeting w/pad - stain resistant	S	S	S	S	S
Ceiling - fabric	S	S	S	S	S
Ceiling lights	S	S	S	S	S
Ceiling vent - non-powered, lounge		S	S	S	S
Ceiling vent - non-powered, galley	S	S	S	S	S
Ceiling vent - non-powered, bedroom			S	S	S
Ceiling vent - powered, bathroom	S	S	S	S	S
Clock - decorator style	S	S	S	S	S
Color themes (interior) - choice of Copper Canyon, Spun Silver, Stars & Stripes, Newport	S	S	S	S	S
Color themes (interior) DL upgrade - choice of Regency, Malachite				O	O
Courtesy lights (2) - floor w/switch, 1 on 25RC	S	S	S	S	S
Decorative overhead door exchange - exchange mirrored doors to wood	O	O	O	O	O
Divider - folding door (fabric)	S				S
Divider - hinged door		S			
Divider - sliding door				S	
Lamp - decorator style, wall-mounted in lounge		S		S	S
Pleated shades*	O	O	O	O	O
Storage below couch - (hinged front panel)	S	S	S	S	S
Wardrobe - mirrored doors (25RC, 29RQ, 31RQ), carpeted floor, drawers, upper shelf (NA 25RC & 28RC), clothes rod	S	S	S	S	S
Windows - tinted	S	S	S	S	S
Windows - dual glazed, thermo-insulated	O	O	O	O	O
GALLEY					
Coffee maker - w/clock & timer	O	O	O	O	O
Counter extension - flip-up	S				
Flooring (vinyl)	S	S	S	S	S
Galley rail	S	S	S	S	S
Microwave oven - touch control	S	S	S	S	S
Mirror - wall-mounted in dining area	S			S	S
Pantry		S			S
Range hood - w/light, powered vent fan	S	S	S	S	S
Range w/oven - 3 burners (1 high output)	S	S	S	S	S
Refrigerator/freezer - double-door	S	S	S	S	S
Sink (double) - stainless steel	S	S	S	S	S
Storage - below dinette seat	S	S	S	S	S
BEDROOM					
Bedsprad(s), pillows, pillow shams, throw pillow(s)	S	S	S	S	S
Day/night pleated shades*	O	O	O	O	O
Lamp(s) - decorator style, wall-mounted			S	S	S
Mattress - innerspring			S	S	S
Reading light	S	S			
BATHROOM					
Flooring (vinyl)	S	S	S	S	S
Linen cabinet			S	S	S
Lavatory cabinet	S	S	S	S	S
Medicine cabinet & makeup lights	S	S	S	S	S
Mirror(s) - wall-mounted				S	S
Shelf - rear bath wall				S	
Shower - flexible shower head	S	S	S	S	
Shower/tub - flexible shower head					S
Shower curtain - w/track			S		
Shower door - pleated	S	S		S	S
Sink - rectangular, molded soap dishes	S	S		S	
Sink - large oval, ledge back			S		S

S Standard
O Optional

25RC 28RC 29RQ 31RQ 33RQ

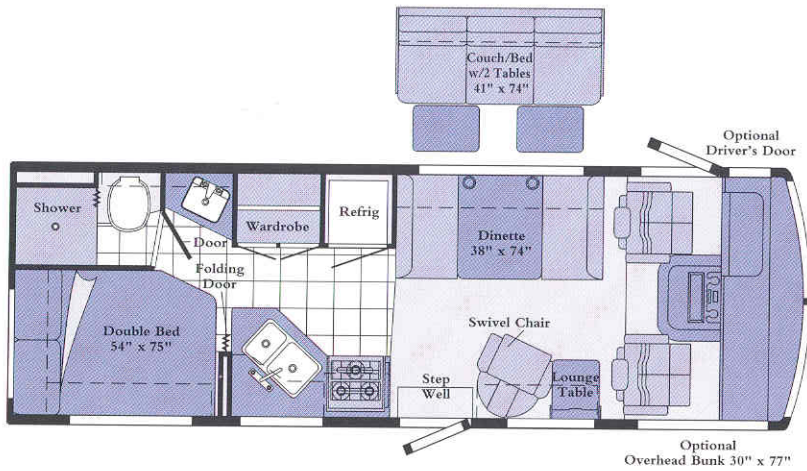
EXTERIOR	25RC	28RC	29RQ	31RQ	33RQ
Skylight w/light - shower area (additional skylight in 33RQ lavatory area)	S	S	S	S	S
Storage cabinet					S
Toilet (marine style) & tissue holder	S	S	S	S	S
Towel bar	S	S	S	S	
Towel rack (3) - recessed into door	S	S	S	S	S
Towel ring	S	S	S	S	S
EXTERIOR					
Awning rail	S	S	S	S	S
Awning - patio	O	O	O	O	O
Bumpers - rustproof, front: steel reinforced, rear: aluminum w/end caps	S	S	S	S	S
Entrance door & screen door - w/locks (2) latch, deadbolt	S	S	S	S	S
Entrance door step (electric) - w/door jamb switch	S	S	S	S	S
Holding tank compartment - heated	S	S	S	S	S
Ladder	S	S	S	S	S
Lower paint (blue)*	O	O	O	O	O
Outlet - 110-V, curbside	S	S	S	S	S
Porch light - interior switch	S	S	S	S	S
Sewer hose & storage compartment	S	S	S	S	S
Storage compartments - floor & side lining, steel construction, full-hinged valance panel doors w/locks, gas spring supports on most	S	S	S	S	S
Tire tools - wrench, leverage bar	S	S	S	S	S
Trailer towing package w/Class II hitch	S	S	S	S	S
Undercoating - (NA Ford chassis)	O	O	O	O	O
Wash station - pullout w/water pump switch	S	S	S	S	S
Water fill door - lockable	S	S	S	S	S
Water hook-up	S	S	S	S	S
Wheel covers & rear mud flaps	S	S	S	S	S
Wheel liners - stainless steel	O	O	O	O	O
SYSTEMS					
Air conditioning pre-wiring - roof	S	S	S	S	S
Air-conditioner - roof, 14,800-BTU	O	O	O	O	
Air-conditioners* - roof, front./rear: 13,500/13,500-BTU				O	O
Batteries (2) - deep cycle RV	S	S	S	S	S
Electrical control center - 110-V AC/12-V DC, 9-amp. batt. charger, 45-amp. converter (32-amp. on 25RC), DC fuses, AC breakers, 30-amp. power cord	S	S	S	S	S
Furnace - ducted, low profile, elec. ign., 25,000-BTU	S				
Furnace - ducted, low profile, elec. ign., 30,000-BTU		S	S		
Furnace - ducted, low profile, elec. ign., 35,000-BTU				S	S
Generator prep kit* - fuel line, 12-V wiring	S	S	S	S	S
Generator* - 3,500-watt LP				O	
Generator* - 3,600-watt LP	O	O	O		
Generator* - 4,000-watt gas	O	O	O	O	
Generator* - 5,000 or 6,500-watt gas				O	O
Generator* - 6,300-watt LP				O	
LP tank - permanent mount w/gauge	S	S	S	S	S
Monitor panel - water, holding & LP tank levels, battery condition gauge, water heater ignition switch w/pilot indicator light, water pump switch, located in galley	S	S	S	S	S
Water heater (motoraid) & rear automotive heater - 6 gal., elec. ignition	S	S	S	S	S
Water heater winterization by-pass valve	S	S	S	S	S
Water pump (demand)	S	S	S	S	S
SAFETY					
Assist handle - interior		S	S	S	S
Assist strap - interior	S	S	S	S	S
Assist handle - exterior, carbon monoxide detector/alarm, fire extinguisher (10-B.C.), ground fault interrupter, LP leak detector/alarm, smoke detector/alarm, rear high-mount brake light	S	S		S	S
Lap belts - in designated areas	S	S	S	S	S
3-point cab seat belts	S	S	S	S	S

† The height of each model is based on the curb weight of a typically equipped unit on the standard chassis. The actual height of your vehicle may vary by as much as 2" depending on chassis or equipment variations.
NA Not Available. ♦ Required in California. * Not all options available in combinations. See dealer for details.

♣ TV satellite system options do not include programming activation. Quality reception is only available in the lower 48 states. Receiver not available in Canada.

Winnebago Industries' continuing program of product improvement makes specifications, equipment, model availability and prices subject to change without notice. Comparisons to other motor homes are based on the most recent information available.

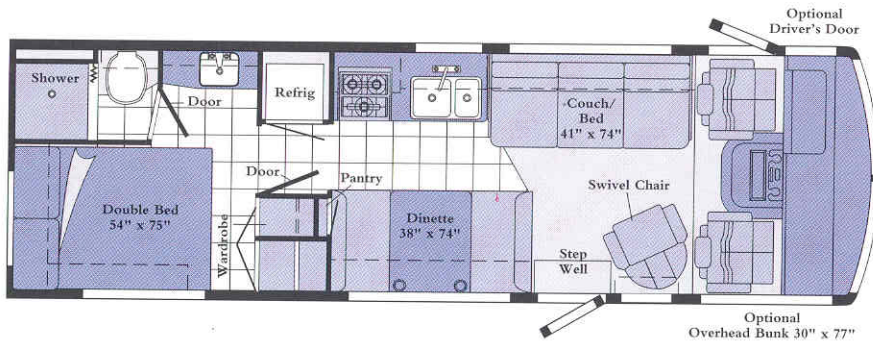
We designed 17 floorplan combinations and one for you.



25RC

Back by popular demand, this floorplan now has standard vinyl throughout the galley and bath. Choose a dinette or a couch/bed with two tables.

Length	25'1"
Exterior Width	8'
Interior Width	7'7"
Interior Height	6'8"



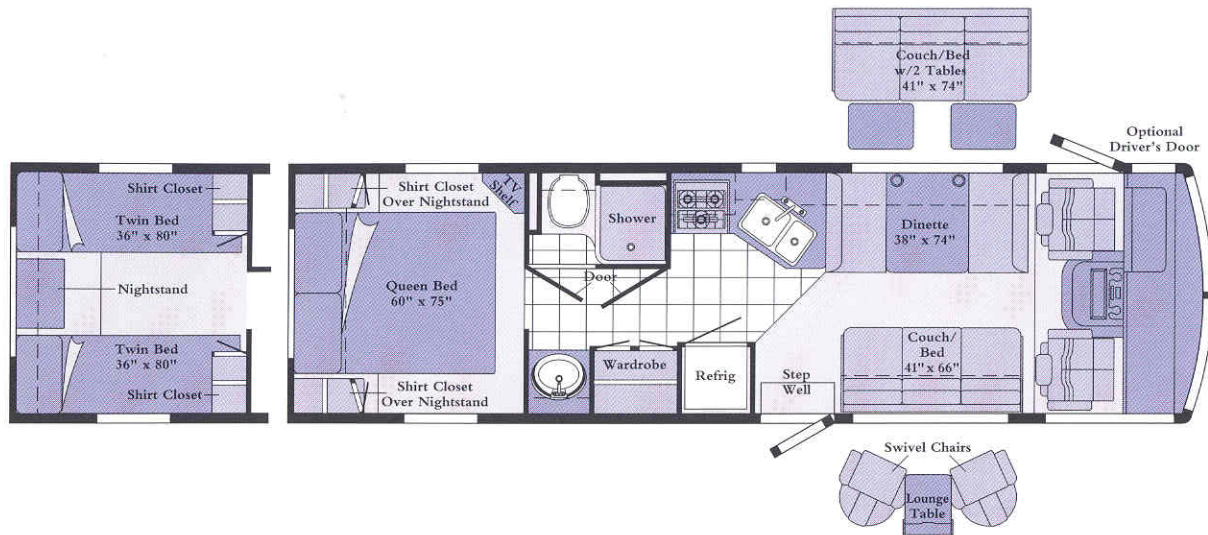
28RC

A model for people who want both a dinette and sofa. Enjoy the view through the large picture window. A large wardrobe highlights the bedroom.

Length	27'7"
Exterior Width	8'
Interior Width	7'7"
Interior Height	6'8"



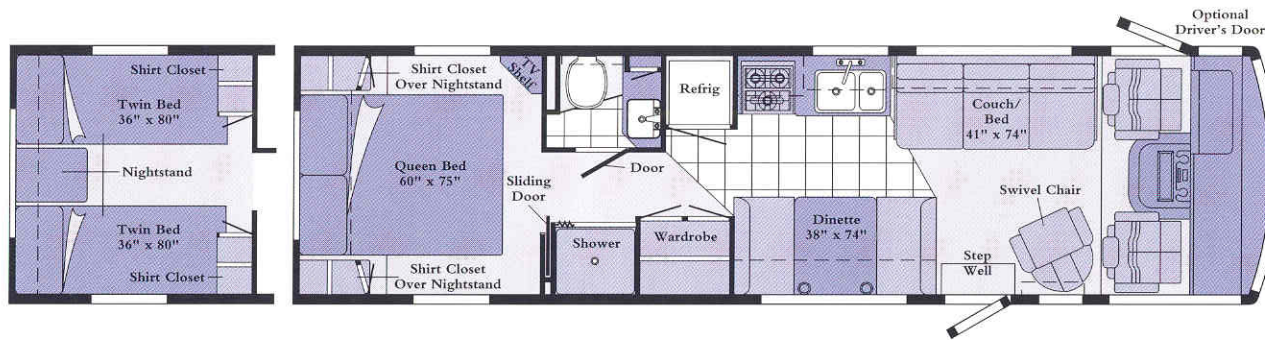
Standard Vinyl



29RQ

This model offers a variety of choices, like a queen bed or new, wider twin beds. Seating and dining combinations suit everyone from singles to families.

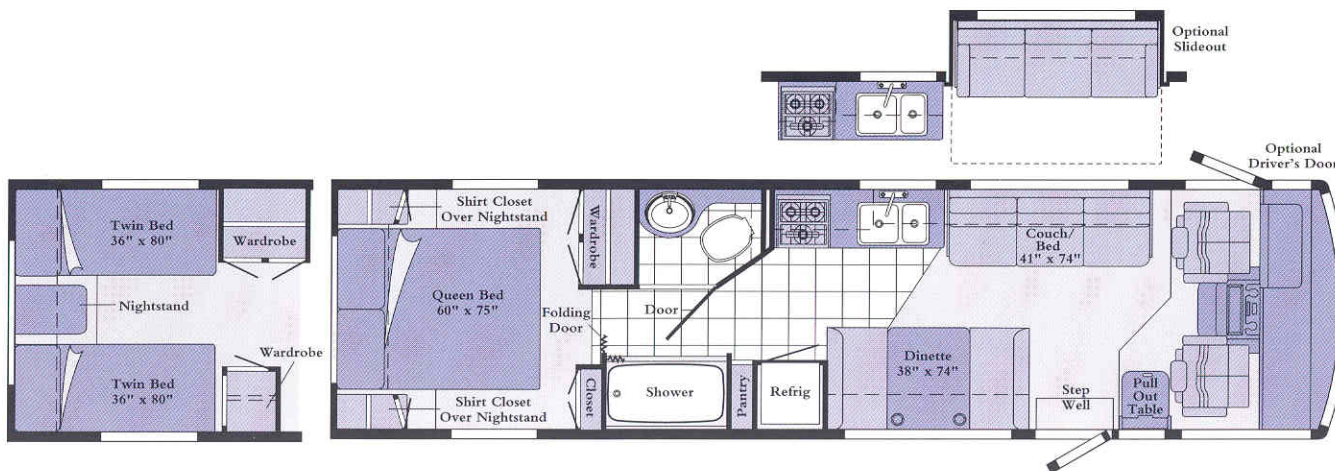
Length	29'4"
Exterior Width	8'
Interior Width	7'7"
Interior Height	6'8"



31RQ

The bedroom has a walk-around queen bed or twin beds. Dining and seating areas are separate, and vinyl is standard in the galley, dining and bath areas.

Length	31'3"
Exterior Width	8'
Interior Width	7'7"
Interior Height	6'8"



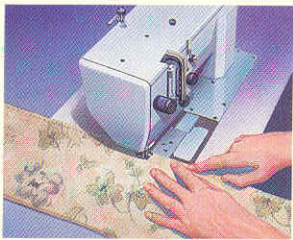
33RQ (New)

Add more space instantly: the new available slideout has a sofa and an overhead cabinet. There's also a pullout pantry and a choice of queen or new wider twin beds.

Length	32'7"
Exterior Width	8'
Interior Width	7'7"
Interior Height	6'8"

Note: Dimensions shown are for sleeping space only and dashed lines denote overhead storage areas.

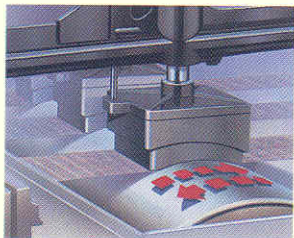
It's little things that make your motor home feel



Our own Stitchcraft Division makes the seats, cushions, draperies and bedspreads that give our interiors a custom-designed look and feel.



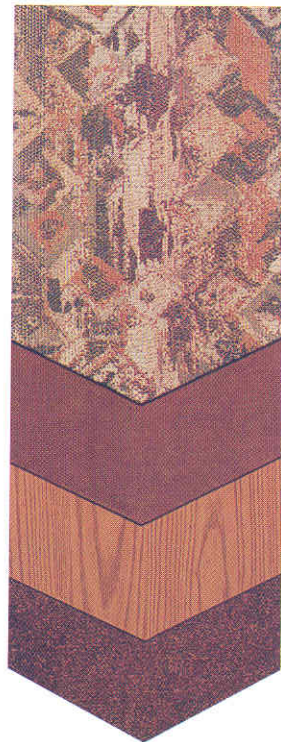
The cabinet shop is responsible for cabinetry, doors and countertops. They use time-tested traditional methods like panel and rail construction.



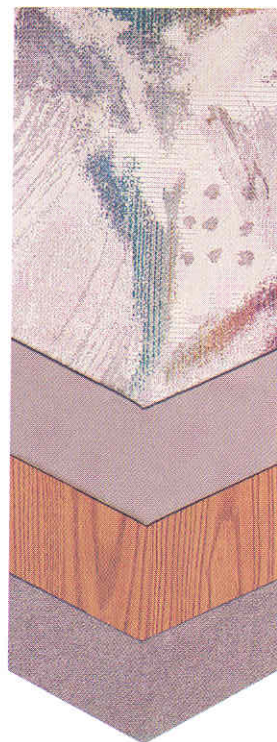
A double rub test, which simulates getting in and out of a seat up to 30,000 times, is used to make sure our upholstery fabrics will stand up to years of wear.



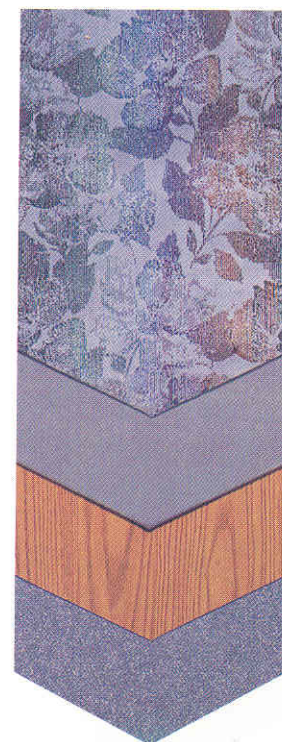
Copper Canyon
with Waterford Oak



Spun Silver
with Waterford Oak



Newport
with Waterford Oak



Stars and Stripes
with Waterford Oak



Note: Chair shown is for fabric representation only. This chair style is not available.

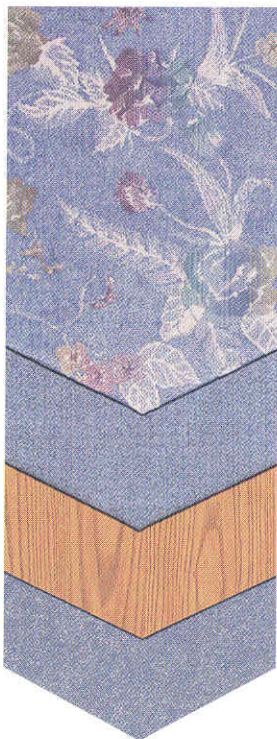
like home.



Regency-DL
with Waterford Oak



Malachite-DL
with Waterford Oak



Other than bringing along your favorite knickknacks, how can you make a motor home actually feel like home? We start by considering dozens of details that add up to a concept we call Home Comfort Design.

By making most of our own furniture and cabinetry, we can have greater control over the fit and finish. And for fabrics and carpeting, we specify only materials that surpass industry wear tests and are treated for stain resistance. Of course, you're welcome to add your own touches. We just want to provide surroundings you'll enjoy coming home to.



31RQ

In addition to a slideout, you can choose from many conventional floorplans, including this 31-foot model with new, larger bedroom windows.



Winnebago Industries has been designated a Qualified Vehicle Modifier by Ford Motor Company. The QVM program promotes high standards for manufacturers who build motor homes on Ford chassis, and we are proud to be one of the first motor home manufacturers to qualify. Meeting QVM standards is a part of our policy of continuous quality improvement.

*Winnebago Industries
Commercial Vehicles*



We build mobile clinics, police and fire command posts and many other hard-working vehicles. Units from 22 to 37 feet can be custom built for almost any application.

*Where your
motor home comes
from is just as
important as
where it takes you.*

Most manufacturers assemble motor homes in several locations. But ours are built in just one place:

Forest City, Iowa. To understand how this helps us build better motor homes, you should know a little of our history. Winnebago Industries began in Forest City nearly 40 years ago.

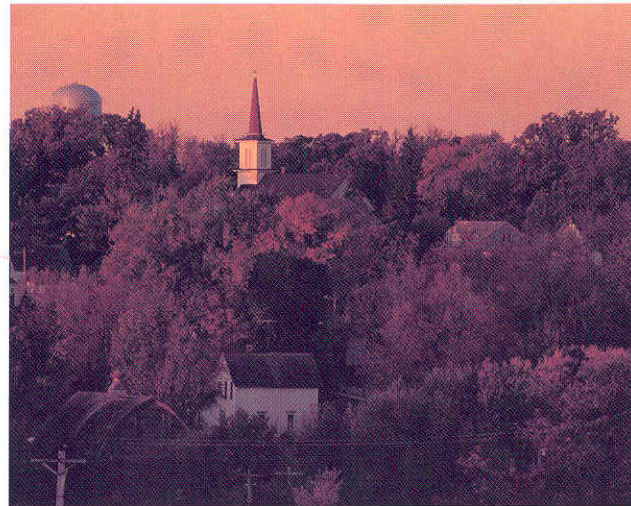
Since that time, friends, neighbors and sometimes even two or three generations of the same family have worked side by side.

We've always had a special incentive to pay attention to the details and keep quality

high. Because around here, building motor homes isn't just a job. It's a way of life.

To learn more about our motor homes, we invite you to see one of our outstanding dealers. And to see how we

build motor homes, you're welcome to visit our headquarters. Call us at (515) 582-3535 for a free factory tour.



Seat belts are your most important hookup. Always buckle up.