



# CARDINAL

BY FOREST RIVER

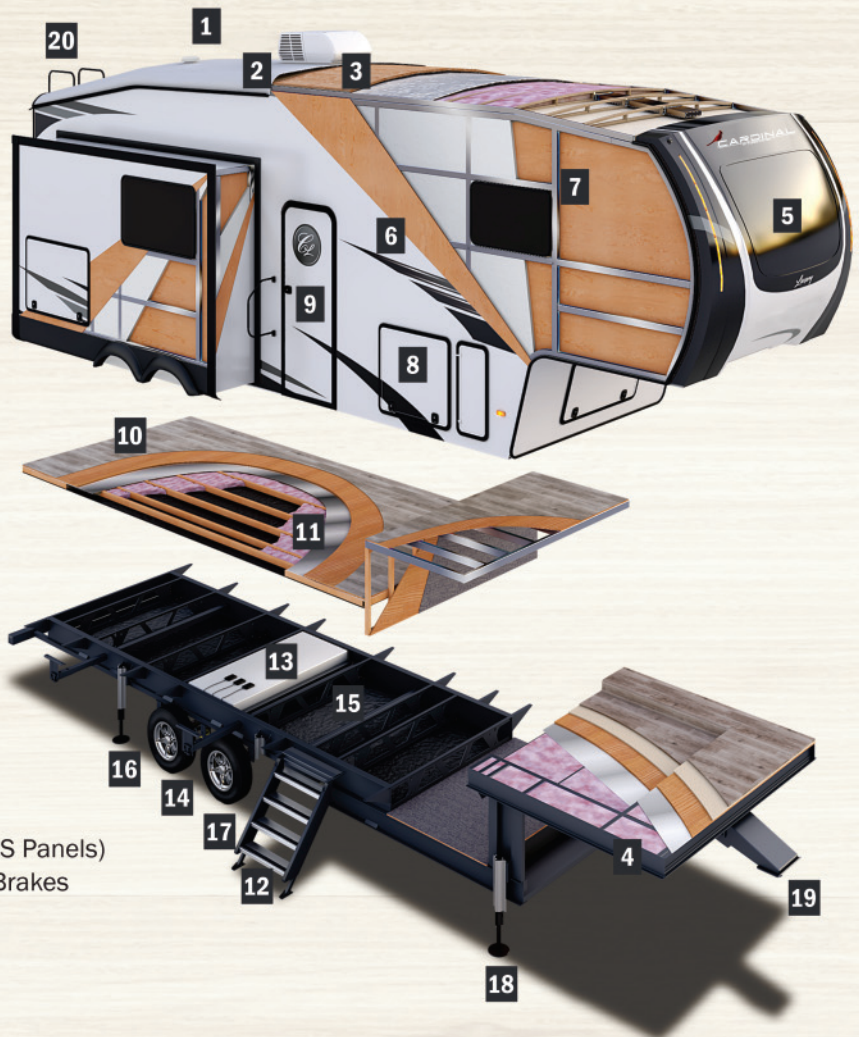
*Luxury*



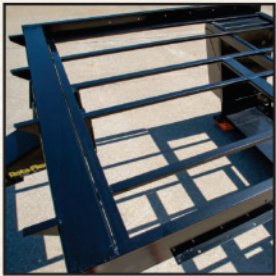


# EXTERIOR FEATURES

- 1 Exterior Ventilated Attic for Breathable Roof
- 2 PVC Roof Membrane w/ lifetime warranty
- 3 3/8" Plywood roof decking for Fully Walkable Roof Construction
- 4 LCI Next Gen "Z" Frame 12" Main I-beam to 10" drop I-beam
- 5 Front Windshield on select Floorplans
- 6 2" Thick Vacuum Bonded Main sidewalls and Slide Boxes
- 7 Aluminum Framed Window, Door & Slide openings for Max Strength
- 8 Metal Slam Latch Compartment Doors
- 9 32" x 76" Extra Large Entry Door
- 10 5/8" Tongue and Groove Plywood Main and Upper Floor Decking
- 11 Two Layers Batten insulation & Radiant Foil in Roof, Floor & Caps
- 12 Solid 4 Step Entry Steps Hinged to Lock in Door Frame
- 13 Forced Air Furnace Heat & 12V Tank Heaters in Subfloor
- 14 Road Armor Suspension
- 15 Underbelly Armor for Best in Class Protection (4' ABS Panels)
- 16 7,000 lbs Easy Lube Dexter Axles w/ Never Adjust Brakes
- 17 G Range Tires Standard on All Cardinals
- 18 6-Point Hydraulic Leveling
- 19 21,000 lbs Pin Box
- 20 Roof Mounted Solar Panel



# INNOVATIVE AMENITIES



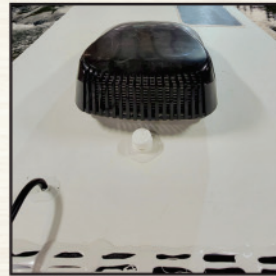
**NEXT GENERATION Z-FRAME TECHNOLOGY**



**ROAD ARMOR SUSPENSION WITH WET BOLTS AND SHACKLES**



**UNDERBELLY ARMOR - REMOVABLE ABS PANEL**



**PVC ROOF MATERIAL WITH VENTED ROOF DESIGN AND SOLAR PANEL**



**ONE-PIECE MOLDED REAR CAP**



**POWER CORD REEL**



**TANKLESS WATER HEATER**



**NO CARPET THROUGHOUT**



**FIREFLY**



**18 CU FT REFER OPTION/ 12V STD**



**55" TV W/ BUILT IN SOUND BAR**



**CADET BEDROOM HEATER**



# FIFTH WHEEL FLOORPLANS



SCAN HERE FOR MORE INFO



## 320RLX

- Length: 36' 1"
- Height: 13' 3"
- Hitch Weight: 2,105 lb.
- CCC: 4,121 lb.
- UVW: 11,379 lb.
- GVWR: 15,500 lb.



SCAN HERE FOR MORE INFO



## 360RLX

- Length: TBD
- Height: TBD
- Hitch Weight: TBD
- CCC: TBD
- UVW: TBD
- GVWR: TBD



SCAN HERE FOR MORE INFO

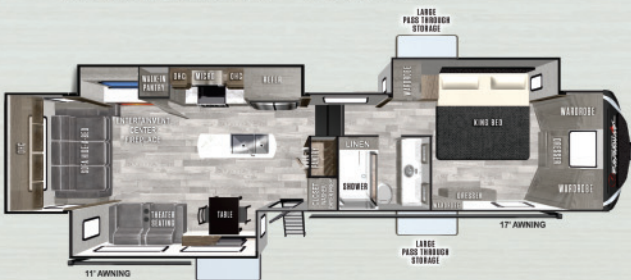


## 370RLX

- Length: 42' 7"
- Height: 13' 3"
- Hitch Weight: 2,660 lb.
- CCC: 2,246 lb.
- UVW: 14,414 lb.
- GVWR: 16,660



SCAN HERE FOR MORE INFO

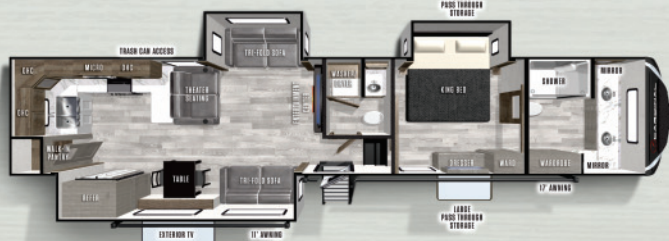


## 380RLX

- Length: 41' 8"
- Height: 13' 3"
- Hitch Weight: 2,768 lb.
- CCC: 2,916
- UVW: 12,584
- GVWR: 15,500



SCAN HERE FOR MORE INFO



## 390FBX

- Length: 43' 3"
- Height: 13' 3"
- Hitch Weight: 2,315 lb.
- CCC: 2,656 lb.
- UVW: 12,844 lb.
- GVWR: 15,500

# PAINT OPTIONS



SCARLET ROSE



SMOKY MAMBA



MING BLUE

# DECOR OPTIONS



ELLIOT SLATE



IVORY CREAM



# STANDARDS AND OPTIONS

## KITCHEN

- 17 cu. ft. Refrigerator
- Residential Range
- Residential contemporary cabinet hardware and accents
- High rise, pull out, bullet kitchen faucet
- Residential size pantry with pull out drawers
- Hidden hinges
- Power vent fan
- Seeded decorative glass cabinet doors
- Decorative Lighting above island
- Full extension drawer guides
- Satin Nickel plumbing fixtures

## LIVING AREA

- Thomas Payne Collection tri fold hide-a-bed sofa
- Decorative Hardwood slide room fascia
- Linoleum throughout unit- NO CARPET
- 35K BTU furnace
- 70 Amp converter with Charge Wizard
- Black metal exit assist handle
- 50" L.E.D. TV with sound bar
- 50" L.E.D. pop-up TV (370FLX)
- End Tables with 110v outlets & 2.0 USB ports
- Carbon monoxide detector
- LP leak detector
- Ceiling Fan
- 3" Crown Molding with L.E.D. back lite
- Base boards for residential feel
- Decorative Light box over theatre seating
- Designer Window Valances with decorative wood trim and center medallion
- Day/ Night roller shades
- 55" TV w/ built in sound bar

## BEDROOM/BATHROOM

- Renovo Sleep Systems mattress
- True walk in closet design
- Prepped for stackable washer & dryer with separate 20 AMP circuits for each appliance
- Under bed storage
- Two 110v bed side power outlets
- 72x80 King Beds
- Decorative L.E.D. lit headboard
- Two reading lights with individual controls
- 32" L.E.D. TV with Wood Framed decorative box
- 48" x 30" one-piece molded fiberglass shower
- 3 sliding glass shower door
- Shower skylight
- Heat & A/C duct
- Porcelain toilet with foot flush
- Power roof vent
- Towel bar

## OPTIONS

- 3rd A/C 13.5K BTU Whisper Quiet in Living Area
- Suburban Gas Griddle w/ mounting bracket
- 18 cu. Ft. Norcold 4 door gas/electric refrigerator
- Slide out awnings (3,4)
- Winegard Wi-fi / 4G router
- Dual Pane Windows / Safety Glass
- 3 Full Body Paint Options: Scarlet Rose, Smoky Mamba & Ming Blue

## EXTERIOR/CONSTRUCTION

- Premium High Gloss Gel Coat Fiberglass exterior
- Front Cap: Painted high gloss gel coat fiberglass with amber L.E.D. running lights
- Frameless Automotive Windows
- Rear Roof ladder
- XL folding entry assist handle
- Outside Entertainment with built in 32" TV and Soundbar
- Enormous drop-frame pass-through storage compartment with forced air heat & L.E.D. strip lighting
- Slam Latch compartment doors
- Extra large 32" X 76" entry door with friction hinge
- L.E.D. light package: Entry step, Goose neck, Front cap & Entry door
- 20 vented battery prep boxes
- Waste Hose storage compartment
- 1.5" Aluminum belt rail with caps (no exposed screws)
- Dual 30 lb. propane bottles with auto switch over
- LCI Next Generation Frame Technology, "Z" frame design & powder coated
- "Z" frame design using 12" I-beam with 10" I-beam drop
- Dicor PVC roof membrane with lifetime warranty
- Bath/Bedroom Floors: Welded aluminum frame with 5/8" tongue & groove plywood floors
- Slide Box: 2" Laminated aluminum framed sidewalls & roof with 1" wood flooring
- 2" Laminated aluminum framed front wall anchors sidewalls for added strength
- EGS backing strips to anchor interior cabinets
- Seamless roto-cast holding tanks
- Underbelly Armor provides rigid road debris protection and comes in 4' sections for easy accessibility to underbelly
- One piece molded front cap with batten insulation and radiant foil
- Hydraulic slide system with 2.5" steel rams
- Hydraulic pump station with manual overrides and slide selector switches
- Electric above floor slides

## CARDINAL LUXURY PACKAGE

- Buffet Dinette w/ 32" Exterior TV
- Frameless Automotive Windows
- One Piece Molded Rear Cap (N/A 370FLX)
- Rota-Flex Pin Box
- Hydraulic 6-Point Auto Level
- Firefly Command Center
- Power Cord Reel
- Hardwood, Raised Panel Cabinet Doors & Fascia
- 30" Convection Microwave
- 2" Accessory Receiver
- Farmhouse 60/40 Kitchen Sink Generator Prep

## LUXURY EXTENDED SEASONS CAMPING PACKAGE

Sidewalls: 2" High Density Block Foam Insulation (R-9)

Roof: Fiberglass and Foil Insulation (ER38)  
Floor: Fiberglass and Foil Insulation (ER38)

- 12V Heat Pads w/ Underbelly Ducted Heat
- 35K BTU Furnace
- 27K BTU A/C Output w/ Energy Management
- Girard Tankless Water Heater
- Exterior Ventilated Attic for Breathable Roof
- Cadet Wall Mounter Heater with Circulation Fan
- Electric Fireplace Living Room
- Full Pass Thru Front Storage w/ Forced Air Heat

## LUXURY ESSENTIALS PACKAGE

- Vacuum Bonded, Welded Aluminum Structure
- 5/8" Tongue and Groove Plywood Floor
- Solid Surface Kitchen Countertops
- Stackable Washer/Dryer Prep
- Winegard 360+ (AM/FM, TV Antenna w/ 4G & WiFi Extender Prep)
- Morryde Strut Assist Entry Step
- 7K Dexter Axles w/ G-Rated Tires
- Rear Camera Prep
- Roof Mounted Flex Solar Panel w/ One 12V Battery
- Dual Awnings w/ LED Light Strip (Most Models)
- Powered Theater Seat w/ Massage Feature
- 32" Friction Hinged Entry Door
- 72 X 80 King Beds w/ 110 Outlet on Both Sides

KEEP EXPLORING

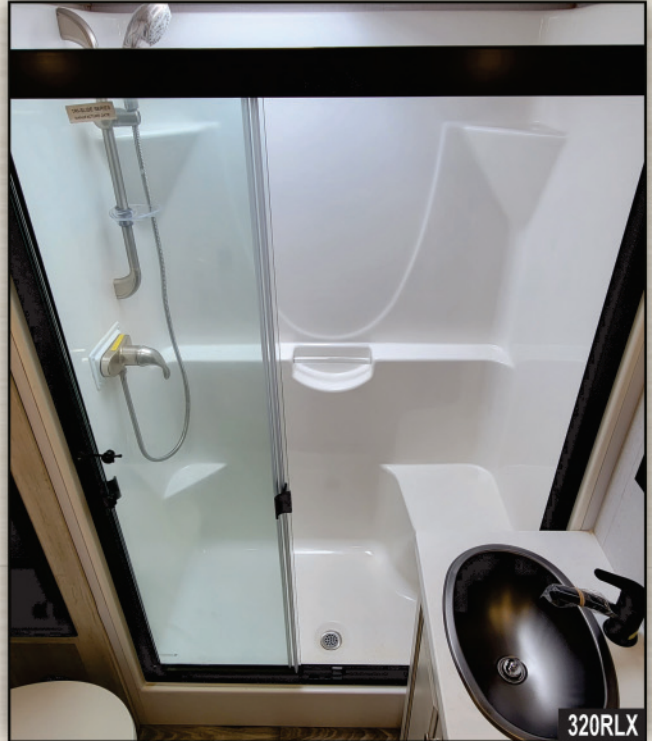


CONNECT WITH US!

Scan this bar code using a QR Reader on your smart phone to learn more about Cardinal.



# CARDINAL INTERIORS







**PRE-DELIVERY INSPECTION FACILITY**

20,000 square feet of quality assurance. The bare essentials for a premium product. This state-of-the-art facility gives immediate daily feedback to production for quality assurance in every unit built.

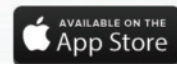
**CUSTOMER SATISFACTION**



[www.ForestRiverBuyLocal.com](http://www.ForestRiverBuyLocal.com)

Download our Forest River mobile app or visit our dynamic online manual to enhance your ownership experience. These interactive options provide incredible ease and insight into use, maintenance and enjoyment of your Forest River product.

Ranging from "How-To" videos, pictures and illustrations of various components, systems and features, to fully searchable content and downloadable PDFs for individual component owner's manuals, answers are always just a click away. View the online manual at [www.forestriverinc.com/OnlineManual](http://www.forestriverinc.com/OnlineManual) or download our FREE app from the App Store or Google Play!



*GVWR (Gross Vehicle Weight Rating) - is the maximum permissible weight of the unit when fully loaded. It includes all weights, inclusive of all fluids, cargo, optional equipment and accessories. For safety and product performance do NOT exceed the GVWR.*

*GAWR (Gross Axle Weight Rating) - is the maximum permissible weight, including cargo, fluids, optional equipment and accessories that can be safely supported by a combination of all axles.*

*UVW (Unloaded Vehicle Weight)\* - is the typical weight of the unit as manufactured at the factory. It includes all weight at the unit's axle(s) and tongue or pin and LP Gas. The UVW does not include cargo, fresh potable water, additional optional equipment or dealer installed accessories.*

*CCC (Cargo Carrying Capacity)\*\* - is the amount of weight available for fresh potable water, cargo, additional optional equipment and accessories. CCC is equal to GVWR minus UVW. Available CCC should accommodate fresh potable water (8.3 lbs per gallon). Before filling the fresh water tank, empty black and gray tanks for more cargo capacity.*

*\*Estimated Average based on standard build optional equipment. \*\* Estimated average based on standard build optional equipment. Values estimated at time of printing.*

Each Forest River RV is weighed at the manufacturing facility prior to shipping. A label identifying the unloaded vehicle weight of the actual unit and the cargo carrying capacity is applied to every Forest River RV prior to leaving our facilities. The load capacity of your unit is designated by weight, not by volume, so you cannot necessarily use all available space when loading your unit.

All information contained in this brochure is believed to be accurate at the time of publication. However, during the model year, it may be necessary to make revisions and Forest River, Inc., reserves the right to make all such changes without notice, including prices, colors, materials, equipment and specifications as well as the addition of new models and the discontinuance of models shown in this brochure. Therefore, please consult with your Forest River, Inc., dealer and confirm the existence of any materials, design or specifications that are material to your purchase decision. ©2020 Wildcat, a division of Forest River Inc., a Berkshire Hathaway company.

**FREE MEMBERSHIP**  
to Forest River Owners' Group

[www.forestriverfrog.com](http://www.forestriverfrog.com)



**24/7 EMERGENCY  
ROADSIDE ASSISTANCE  
WITH VEHICLE PURCHASE\***

- |                 |                         |
|-----------------|-------------------------|
| TOWING          | WINCH-OUT               |
| JUMP-STARTS     | MOBILE MECHANIC         |
| TIRE CHANGES    | TECHNICAL               |
| FLUID DELIVERY  | SUPPORT                 |
| LOCKOUT SERVICE | DEALER LOCATOR SERVICES |



**\*VALID FOR 1 YEAR FROM DATE OF PURCHASE**



**Learn More**

Scan this barcode using a QR Reader on your smart phone to learn more about Forest River.



A Berkshire Hathaway company.