



210 Popular

210 Popular



The ultimate fusion of design

A true Class B motorhome, the 210 Popular was crafted with care and precision. From front to rear you will find the 210 Popular has a spacious design and an abundance of storage so you'll never have to leave anything behind. The rear power sofa folds down into a luxurious king-size bed for two, with an additional sleeping area at the front for a third passenger. Experience diverse, exciting and beautiful locations with the 210 Popular, and fulfill all your travel dreams.

Available with

ECOTREK
TECHNOLOGY BY ROADTREK





| | |
|--------------------------|---|
| Base Model | Chevrolet Express 3500 extended van |
| Travel Capacity | Five (USA)/Three (CAN) |
| Sleeping Capacity | Three |
| Dining | Front & rear |
| Engine | 6.0 L SFI gas V8 |
| Batteries | Two 6 V AGM, 2,400 W |
| Water Heater | Propane with bypass, 23 L/6 U.S. gal., 12,000 BTU |
| Water Capacity | |
| Fresh | 135 L/36 U.S. gal. |
| Black | 40 L/10 U.S. gal. |
| Gray | 85 L/23 U.S. gal. |
| Tow Weight | 7,650 lbs. (3,450 kg) |
| Tongue Weight | 1,000 lbs. (450 kg) |

Interior Color Options

Cabinetry



Cherry

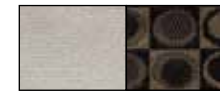


Bamboo



Ebony

Main & Accent Fabric



Tan

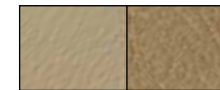


Platinum



Onyx

Leather Seating



Tan



Platinum

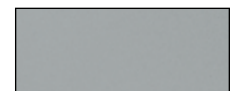


Onyx

Exterior Paint Options



White



Silver Ice



Charcoal Gray

Features

- Expansive galley with a beautiful granite countertop, convection microwave oven, and a 5 cu. ft. refrigerator
- Automatic propane heating system
- Extensive storage capacity
- Comfortable and spacious permanent bathroom with stand-up shower
- Increased interior headroom



210 Popular

Specifications

| | |
|--|---|
| Exterior length | 21' 11" (6,680 mm) |
| Exterior width (without mirrors) | 7' 4" (2,135 mm) |
| Interior aisle width | 30" (760 mm) |
| Exterior height | 8' 9" (2,660 mm) |
| Interior standing height | 6' 2" (1,880 mm) |
| Wheelbase | 155" (3,940 mm) |
| Gross vehicle weight rating | 9,600 lbs. (4,355 kg) |
| Occupant & cargo carrying capacity* | 1,450 lbs. (650 kg) |
| Gross combined weight rating* | 16,000 lbs. (7,258 kg) |
| Towing – tow weight* | 7,650 lbs. (3,450 kg) |
| Towing – tongue weight* | 1,000 lbs. (450 kg) |
| Fuel type | Gas |
| Fuel capacity | 117L/31 U.S. gal. |
| Fresh water capacity | 135 L/36 U.S. gal. |
| Black holding tank capacity | 40 L/10 U.S. gal. |
| Gray holding tank capacity | 85 L/23 U.S. gal. |
| Storage capacity (with options) | 1,940 L/69 cu. ft. (2,040 L/72 cu. ft.) |
| Rear king sleeping maximum (width x length) | 80" x 78" (2,030 mm x 1,980 mm) |
| Rear twin bed (width x length) | 30" x 78" (760 mm x 1,980 mm) |
| Front single bed (width x length) | 22" x 74" (560 mm x 1,880 mm) |

* Refer to www.roadtrek.com for more details.

Peace of Mind RV Warranty

Six year unlimited mileage/km, Peace of Mind motorhome warranty, covering the manufacture of the motorhome, appliances, electronics, plumbing and EcoTrek batteries. Original manufacturer's warranty on all appliances will be applied first. Warranty excludes the complete chassis and AGM batteries which have a normal one year manufacturer's warranty.

Chassis Warranty

3 year/36,000 mile or 60,000 km limited "bumper to bumper" warranty and 5 year/60,000 mile powertrain warranty as offered by General Motors. Refer to chassis manufacturers' website for complete details.

Coach Features

| | Standard | Optional |
|--|----------|----------|
| Air conditioner – 110 V, 10,200 BTU | X | |
| Air conditioner – undermount, 12V, 30,000 BTU with self shut off | | X |
| Armoire – interchangeable with right lounge seat | | X |
| Awning – 11' 6" (3,500 mm) power awning | X | |
| Bathroom – permanently enclosed with sink & shower | X | |
| Batteries – two 6 V AGM, 2,400 W | X | |
| Batteries – additional two 6 V AGM batteries | | X |
| Connection – external – 110 V / 30 AMP | X | |
| Detectors – smoke, propane & CO | X | |
| Dinette w/ table (converts to twins or king size bed) | | X |
| EcoTrek Lithium Power Module (200, 400 or 800 AMP hrs) | | X |
| Furnace – propane automatic, 16,000 BTU | X | |
| Generator – Conventional gasoline with remote start, Onan 2.8 kW | | X |
| Generator (Under hood) – 12V, 3,500W, with two extra 6V batteries, 2,500W inverter | | X |
| GoSun Solar BBQ/Oven | | X |
| Home theater system with 5.1 surround sound & dual center speakers with DVD, CD, AM/FM radio, dual use rear speakers | X | |
| Mattress – single folding for 1 st & 2 nd row seats | | X |
| Microwave oven – 110 V convection, 28 L/1.0 cu. ft., 1,800 W convection/1,000 W microwave | X | |
| Monitor panel – water, propane & battery charge levels, battery disconnect & generator hour meter | X | |
| Portable solar cell 200W | | X |
| Power converter with charger – 110/12 V, 3-step 45 AMP charger | X | |
| Power inverter – 12/110 V, 750 W | X | |
| Propane tank – 38 L/10 U.S. gal., 45 lbs. | X | |
| Rear power sofa with "Halo" leather upholstery | X | |
| Refrigerator – 12 V/110 V 2-way fridge, 5.0 cu. ft. with auto source selection | X | |
| Seats – passenger side 2 nd row captain seats | | X |
| Screen package – side door windows, side door & rear door | | X |
| Sewage disposal system – 12 V macerator sewage pump | X | |
| Solar charging system – daylight - 200 W with charge controller | | X |
| Storage compartments (exterior) – three below floor | X | |
| Stove – propane; two burner recessed with flush cover | X | |
| TV – 24" HD flat screen on rotating bracket with remote | | X |
| Volt Start Auto start Battery Protection Technology | | X |
| Water heater – propane with bypass, 23 L/6 U.S. gal., 12,000 BTU | X | |
| Water system – on demand 12 V with water pump | X | |

Chassis Features

| | Standard | Optional |
|---|----------|----------|
| Airbag – Six standard airbags (driver & passenger) | X | |
| Alternator – 145 AMP | X | |
| Axle – rear – 3.42 ratio | X | |
| Battery – 600 AMP | X | |
| Brakes – anti-lock (ABS), four wheel disc | X | |
| Camera – rearview backup | X | |
| Climate control | X | |
| Continental spare tire carrier | | X |
| Cooling – transmission oil – external | X | |
| Cruise control | X | |
| Engine – 6.0 L Vortec V8 (gas) | X | |
| Fender flares – Custom wheel flare moldings (all 4 wheels) | | X |
| Headlights – automatic on/off | X | |
| Mirrors (exterior) – power, heated with convex | X | |
| OnStar® – audio system includes GPS navigation & MyLink with 7 inch color touch screen | | X |
| 4G LTE WIFI – Built-in 4G LTE wifi connectivity with connection for up to 7 devices | X | |
| Power – 224 kW/323 HP | X | |
| Radio – Chevy MyLink radio with navigation, AM/FM stereo, CD player & touch screen navigation | X | |
| Receiver – Class IV | X | |
| Stability program - Adaptive (accounts for load) | X | |
| Theft deterrent system | X | |
| Tilt steering | X | |
| Tire storage – rear storage area | X | |
| Tires – LT245/76R16 black wall | X | |
| Torque – 504 Nm/373 lb.-ft. | X | |
| Transmission – automatic 6-speed heavy duty | X | |
| Wheels – 16" aluminum polished with steel spare | | X |
| Window operation – power; front doors only | X | |
| Wiring harness for towing – 4-way & 7-way connector | X | |

Roadtrek Motorhomes Inc. reserves the right to make changes at any time, without notice, in colors, materials, equipment, specifications and models. This information is intended as a guide only; please visit www.roadtrek.com for a complete list of specifications and options. Some motorhomes may be shown with equipment that is optional. Accessories shown in the photography are not included.

Find Your Roadtrek



Connect With Us



Roadtrek Motorhomes Inc. 100 Shirley Avenue, Kitchener, ON Canada N2B 2E1 | Toll-free: 1.888.ROADTREK (762-3873) | Phone: 519.745.1169 | Fax: 519.745.1160

