



# BUILDING ON OUR LEGACY

2025 Newmar Dealer Meeting

## 2026 BAY STAR GAS MOTOR COACH

### EXTERIORS

CALVERT



ANNAPOLIS



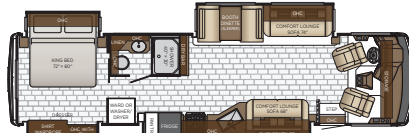
WILLIAMSBURG



### FLOOR PLANS



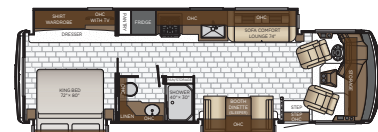
NEW 3114



3626



3826



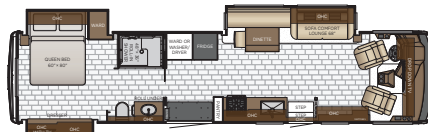
3225



3629



NEW 3609



3811



CHASSIS  
FORD



ENGINE HP  
335



TORQUE  
468



FUEL  
CAPACITY  
80

# WHAT'S NEW FOR 2026

## FLOOR PLAN

### Bay Star 3114 (New)

This all new 3114 floor plan reflects a modification of our most popular 3014 floor plan to accommodate a king size bed. Still the shortest Bay Star floor plan, its size allows access where restrictions prevent other coaches from going. A patio-side dinette transforms everyday moments into memorable experiences with panoramic dining views.

### Bay Star 3609 (New but returning from a few years ago).

Floor plan 3609, a beloved classic, returns re-imagined.

## CABINETS & FURNITURE:

- Introducing new cabinet color, Cove.
- Two-Tone cabinet color option now available with Cove and Chiffon.

## ELECTRICAL

- A Victron 2000W Inverter is now standard.

## EXTERIOR:

- There are three new exterior graphic options available for 2026: Calvert, Annapolis, and Williamsburg.
- Baggage doors with formed exterior skin.

## INTERIOR:

- Contemporary Woven Material has now replaced carpeting in the slide rooms.  
\*Please note that carpet will continue to be used in closets, non-exposed dinette floors, and Gas cockpits.

## PLUMBING & BATH:

- Water filter for entire unit is now standard.

## WINDOWS, AWNINGS, VENTS & DOORS:

- Bedroom end wall windows are 2" taller.

## OPTIONS:

- The option for theater seating has been added to the 3811 (option # K352).
- A new option for an exterior TV is available on the 3114.

