



**BUILDING  
ON  
OUR LEGACY**  
2025 Newmar Dealer Meeting

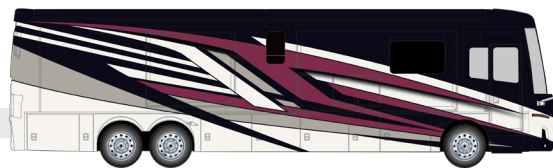
# 2026 MOUNTAIN AIRE LUXURY DIESEL PUSHER

## EXTERIORS

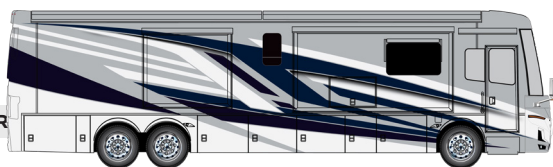
DILLON



EMMONS



FAIRWEATHER



BLACKTHORN



## FLOOR PLANS



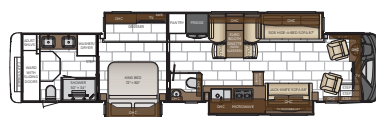
3823



4118



3825



4551



CHASSIS  
SPARTAN



ENGINE HP  
**525**



TORQUE  
**1695**



FUEL  
CAPACITY  
**150**



Comfort Drive  
STEERING

# WHAT'S NEW FOR 2026

## CHASSIS:

- The Spartan chassis is changing to Reyco 20K IFS Front Axle – replacing 25MY Meritor IFS.

## CABINETS & FURNITURE:

- Introducing new cabinet color, Chestnut.
- New two-tone cabinet option with Chestnut and Summit.
- Euro-Booth Dinette is now standard.

## ELECTRICAL:

- A Victron Multiplus 3000W Inverter is now standard, replacing Xantrax.
- ATC control panel replaces Silverleaf and now connects via Bluetooth to the Newmar App.
- LED Light under ODS Slideouts is now standard.

## EXTERIOR:

- There are four new exterior graphics for 2026: Dillon, Fairweather, Emmons, and Blackthorn.
- Morryde Baggage doors are standard.
- Kitchen Window is now standard.
- 43" exterior TV now standard with placement (sidewall or compartment) dependent upon floor plan.

DIESEL MOTORCOACH

