

20

B\*

24

*Bay Star*

GAS MOTORCOACH

NEWMAR

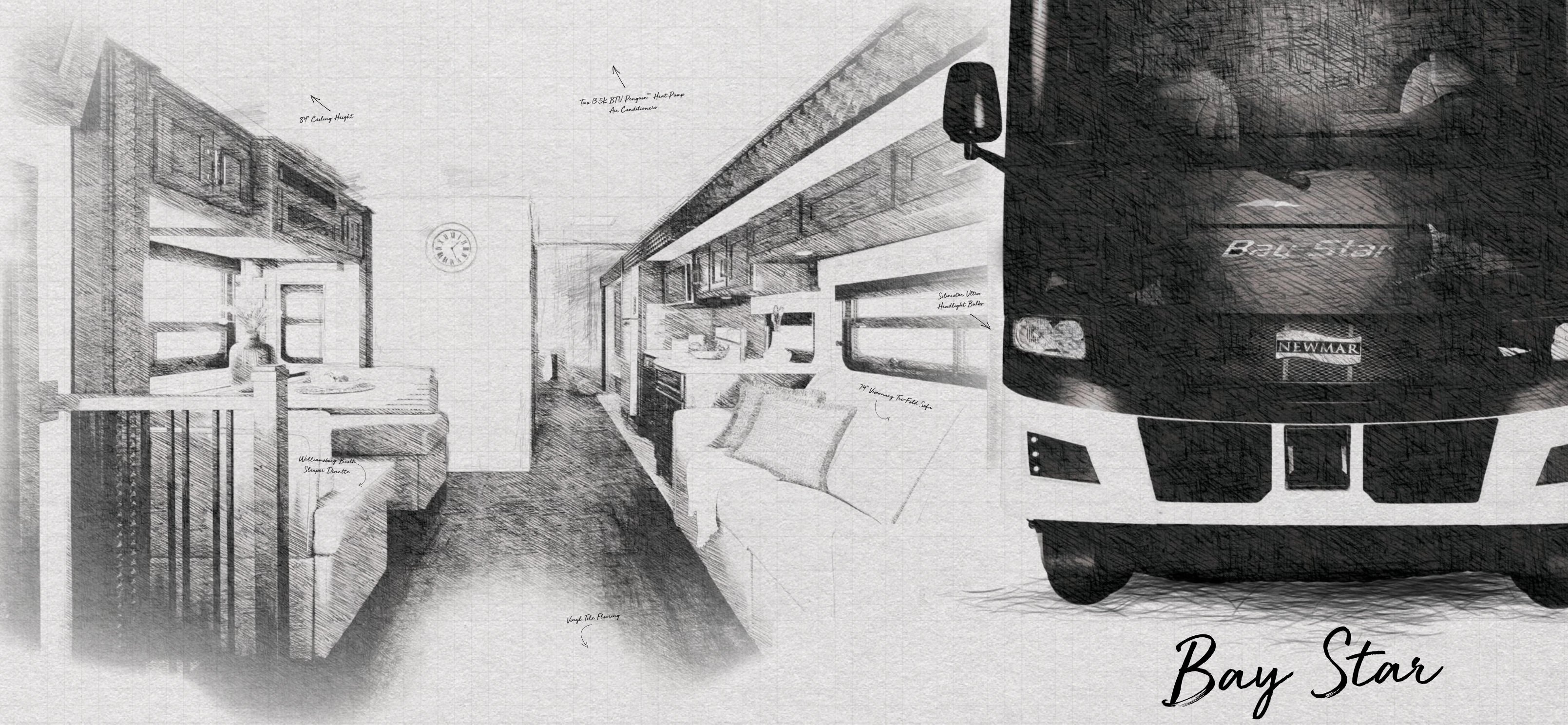




B<sup>+</sup>

# Hand-Crafted, Built for Adventure

In the 2024 Bay Star, everyone's an adventurer. Whether you're looking for an upgrade or searching for the right vehicle to start your RV journey, this popular gas coach has everything you need, for everyone you're bringing.



# Bay Star



# Ford® F-53 Chassis



30'-38' / 8 floor plans

7.3-liter V8 Engine  
350 HP  
468 lb./ft. torque  
Dudley Full-Paint  
Masterpiece Finish™  
Exterior





# Cockpit

## 6-Way Power Driver's Seat

Manual Footrest on Passenger Seat

## Driver Assistant Package\*

Forward Collision Mitigation System

Automatic High Beams

Automatic Emergency Braking

Distance Indication and Alert

Lane Departure Warning System

## Axxera Dash Radio

10" Single Monitor

Apple CarPlay®/Android Auto

SiriusXM® Ready

## Harman/JBL 180-Watt Sound System

Two Wireless Charging Pads

USB and USB-C Connections

Rear and Side-View Cameras

Drop-Down Bunk Bed

Above Cockpit (Optional)

Folding Cockpit Table (Optional)







Floor plan 3618 with Rimini décor and Calypso cabinets

# Cabin

**3 Décor Options:  
Burma, Rimini\*, and Townsend\***

**74" Visionary Tri-Fold Sofa**

**84" Ceiling Height**

\*New for 2024  
\*\*Multiple configurations available  
†Not available on models with drop down bunk





# Cabin

**Two 13.5K BTU Penguin™ Heat Pump  
Air Conditioners**

**Vinyl Tile Flooring**

Vinyl Plank Flooring (Optional)

**New Slide Out Fascia**

**WiFiRanger Everest System  
with Aspen Router** (Optional)

**Central Monitor Panel**

**Samsung® LED TV**

Bose® Soundbar (Optional)

32" Samsung® LED TV in Front Overhead<sup>1</sup>  
(Optional)



Floor plan 3618 with Rimini  
décor and Calypso cabinets





# Galley & Dinette

**Norcold® 10 Cu. Ft. Refrigerator\***

**Three-Burner Cooktop**

**Convection Microwave  
with Air Fryer Feature**

**Kitchen Pantry**

**Glazed Maple Hardwood Cabinets**  
Available in Three Matte Finish Color Options  
Soft-Close Cabinet Doors and Drawers

**Polished Solid-Surface Countertop**  
Undermounted Stainless Steel Sink

**Williamsburg Booth Sleeper Dinette\***  
Drawers Underneath

*\*Additional configurations available*











# Bedroom

**King Bed\* with Pillow Top Mattress**

**Samsung® LED TV**

**Lighted Wardrobe**

**Dresser Drawers**

*\*Bed size varies by floor plan*





# Bothroom

**Midship Half Bath\***

**Residential-Sized Shower\*\***

**Gas/Electric Water Heater**

Electric Ignition

Truma Comfort Plus Continuous Water Heater  
(Optional)

**Linen and Vanity Cabinets**

**Splendide® Stacked Washer and Dryer**  
(Optional)



*\*Available on select floor plans  
\*\*Shower size varies by floor plans*





# Exterior & Storage

## Industry-Exclusive Full-Paint Masterpiece Finish™

Three New Graphic Design and Color Options

## Carefree Travel'r Awning

Alumaguard  
Strip Lighting

## Exterior Entertainment Center (Optional)

32" Samsung® LED TV  
AM/FM Radio

## Lighted Basement Storage





# Exterior

**Silverstar Ultra Headlight Bulbs**

**5.5 kW Cummins Onan® Generator**

**10W Solar Panel** (to charge chassis battery)





*interior & exterior*  
***Design Options***

B\*



# Dudley



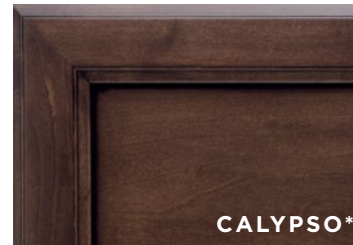
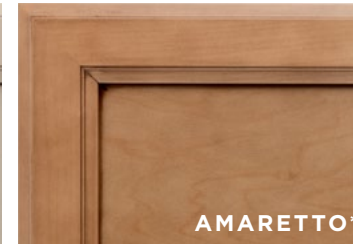
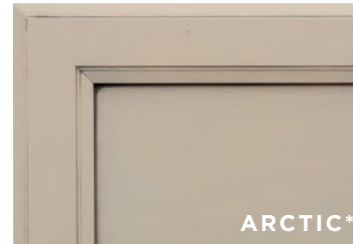
Awning Color: Charcoal Tweed

## BURMA INTERIOR a. Furniture/Fabric b. Flooring c. Counter Top



\*Exterior colors and interior décor options can be matched to customer preference.

## CABINET FINISHES



\*Available in Matte Finish



# Lenland

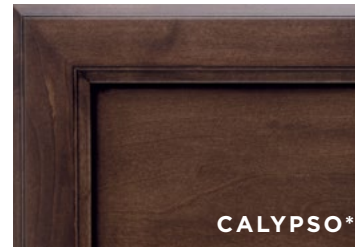
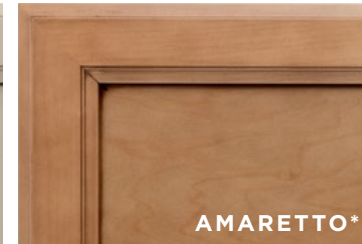
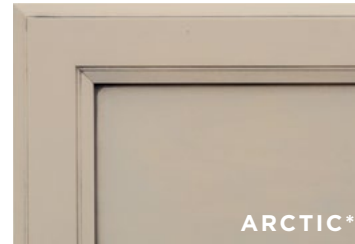


Awning Color: Charcoal Tweed

**RIMINI INTERIOR** a. Furniture/Fabric b. Flooring c. Counter Top



**CABINET FINISHES**



\*Exterior colors and interior décor options can be matched to customer preference.

\*Available in Matte Finish



# Somerset



Awning Color: Charcoal Tweed

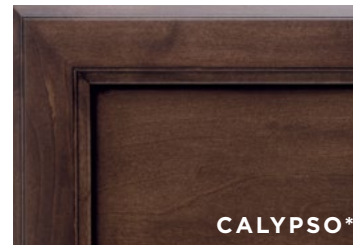
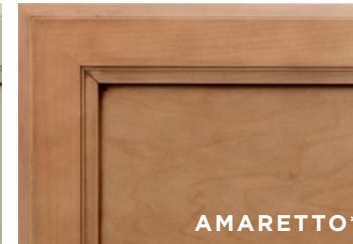
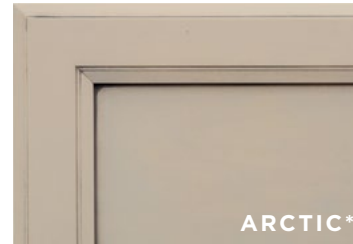
## TOWNSEND INTERIOR

a. Furniture/Fabric   b. Flooring   c. Counter Top



*\*Exterior colors and interior décor options can be matched to customer preference.*

## CABINET FINISHES



*\*Available in Matte Finish*



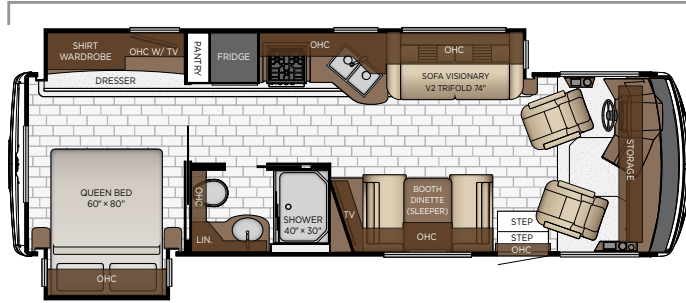
# Floor Plan Specifications

B<sup>+</sup>



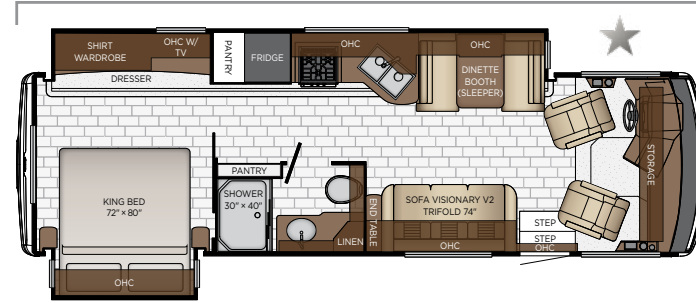


Length: 30' 11"



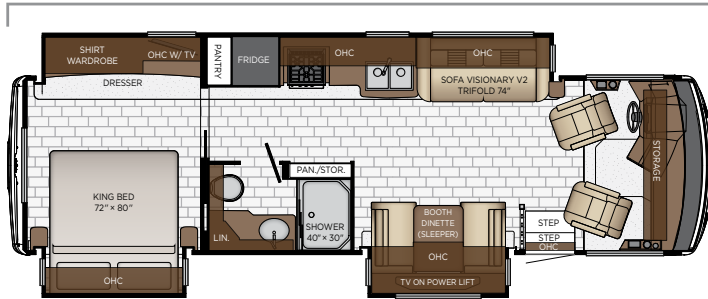
<b>3014</b>	Length	30' 11"	Grey Tank	60 gal.
	Width	101.5"	Sewage Tank	40 gal.
	App. Overall Height	12' 10"	Water Tank	75 gal.
	Interior Width	95.5"	Propane Tank	25 gal.
	Interior Height	84"	Furnace	35,000 btu

Length: 31' 11"



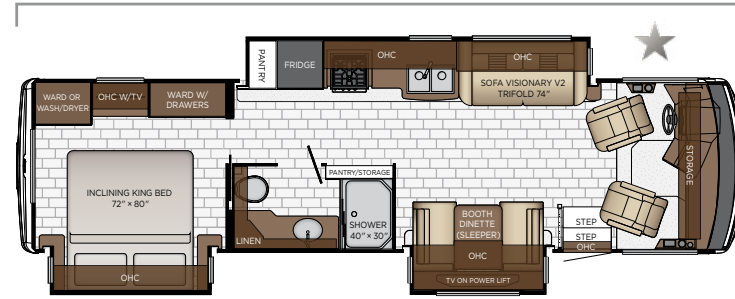
<b>3116</b>	Length	31' 11"	Grey Tank	60 gal.
	Width	101.5"	Sewage Tank	40 gal.
	App. Overall Height	12' 10"	Water Tank	75 gal.
	Interior Width	95.5"	Propane Tank	25 gal.
	Interior Height	84"	Furnace	35,000 btu

Length: 32' 11"



<b>3225</b>	Length	32' 11"	Grey Tank	60 gal.
	Width	101.5"	Sewage Tank	40 gal.
	App. Overall Height	12' 10"	Water Tank	75 gal.
	Interior Width	95.5"	Propane Tank	25 gal.
	Interior Height	84"	Furnace	35,000 btu

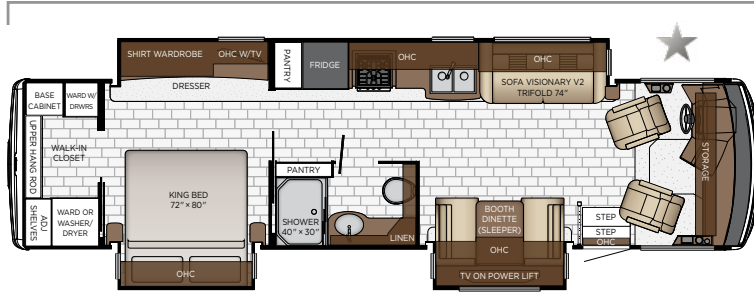
Length: 34' 11"



<b>3423</b>	Length	34' 11"	Grey Tank	60 gal.
	Width	101.5"	Sewage Tank	40 gal.
	App. Overall Height	12' 10"	Water Tank	75 gal.
	Interior Width	95.5"	Propane Tank	25 gal.
	Interior Height	84"	Furnace	35,000 btu

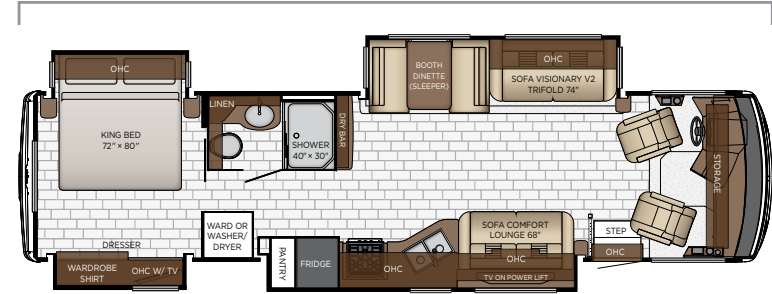


Length: 36' 11"



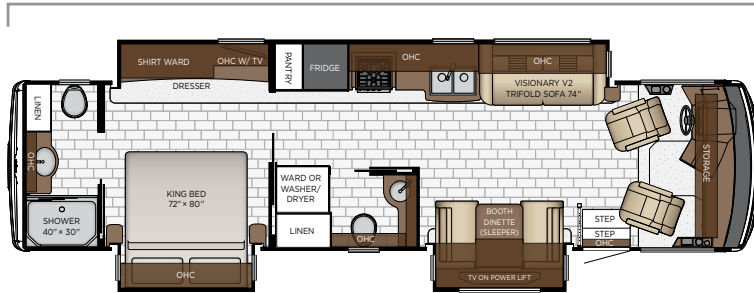
<b>3618</b>	Length	36' 11"	Grey Tank	60 gal.
	Width	101.5"	Sewage Tank	40 gal.
	App. Overall Height	12' 10"	Water Tank	75 gal.
	Interior Width	95.5"	Propane Tank	25 gal.
	Interior Height	84"	Furnace	35,000 btu

Length: 36' 11"



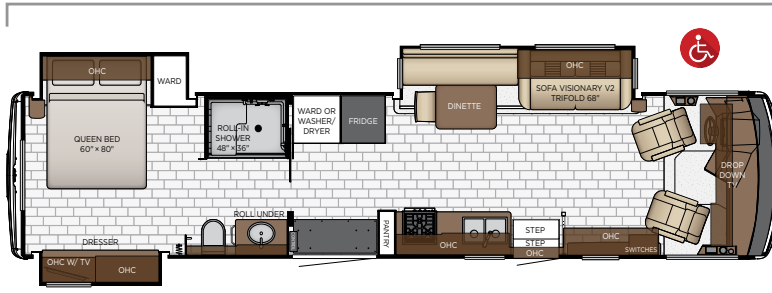
<b>3626</b>	Length	36' 11"	Grey Tank	60 gal.
	Width	101.5"	Sewage Tank	40 gal.
	App. Overall Height	12' 10"	Water Tank	75 gal.
	Interior Width	95.5"	Propane Tank	25 gal.
	Interior Height	84"	Furnace	35,000 btu

Length: 36' 11"



<b>3629</b>	Length	36' 11"	Grey Tank	60 gal.
	Width	101.5"	Sewage Tank	92 gal.
	App. Overall Height	12' 10"	Water Tank	75 gal.
	Interior Width	95.5"	Propane Tank	25 gal.
	Interior Height	84"	Furnace	35,000 btu

Length: 38' 11"



<b>3811</b>	Length	38' 11"	Grey Tank	60 gal.
	Width	101.5"	Sewage Tank	40 gal.
	App. Overall Height	12' 10"	Water Tank	75 gal.
	Interior Width	95.5"	Propane Tank	25 gal.
	Interior Height	84"	Furnace	42,000 btu



# Quality You Can Feel

Like a fine home, the 2024 Bay Star is framed 16 inches on center, and is covered by a fiberglass roof with an integrated gutter rail.

FORD®										
FLOOR PLAN	ENGINE HP	AXLE RATIO	FUEL CAP.	WHEEL BASE	FRONT GAWR	REAR GAWR	GVWR	GCWR	APP. UVW	APP. NCC
3014	350	6.14	80	210	9000	15500	24000	30000	20050	3950
3116	350	6.14	80	222	9000	15500	24000	30000	20350	3650
3225	350	6.14	80	228	9000	15500	24000	30000	21450	2550
3423	350	6.14	80	234	9000	17500	26000	30000	21800	4200
3618	350	6.14	80	242	9000	17500	26000	30000	22700	3300
3626	350	6.14	80	242	9000	17500	26000	30000	22600	3400
3629	350	6.14	80	242	9000	17500	26000	30000	22700	3300
3811	350	6.14	80	254	9000	17500	26000	30000	22850	3150

**The content in our literature depicts and describes products that are subject to change. For the most recent images and information, please visit [NewmarCorp.com](http://NewmarCorp.com).**

Lengths, heights, widths, and dry weights are approximate. Weight will vary based on optional equipment added to the above base weight.

**GAWR:** Gross Axle Weight Rating is the maximum permissible weight for an axle.

**GVWR:** Gross Vehicle Weight Rating is the maximum permissible weight for a fully loaded motor coach.

**GCWR:** Gross Combination Weight Rating is the value specified by the manufacturer of the vehicle as the maximum allowable loaded weight of this motor coach and any towed trailer or towed vehicle.

**UVW:** Unloaded Vehicle Weight is the weight of this motor coach as built at the factory with full fuel, engine oil, and coolants. Does not include cargo, fresh water, propane gas, or dealer-installed accessories.

**NCC:** Net Carrying Capacity is the maximum weight of all occupants, including the driver, personal belongings, food, fresh water, waste water, propane gas, tools, tongue weight of towed vehicle, dealer-installed accessories, etc., that can be carried by the motor coach.

**Specifications supplied by the chassis manufacturer.**

**Bay Star R-Values:**

- Roof R-Value = 19
- Sidewall R-Value = 11
- Floor R-Value = 16
- Basement R-Value = 4



# Features & Options





## EXTERIOR FEATURES

Full-Paint Masterpiece Finish™ with Clearcoat Finish

Diamond Shield Protection on Front Cap

Automatic Step for Entrance Door

Convex Exterior Mirrors with Defrost and Remote Control

Rear Hitch for Towing Car

Assist Handle at Entrance Door

Undercoating

Mud Flaps

Smart Level Hydraulic Leveling Jacks with Bluetooth Compatible Touch Pad

### OPTIONS

Rear Ladder

Flag Pole Bracket

## CONSTRUCTION FEATURES

One-Piece Molded Fiberglass Roof

Gelcoated Fiberglass Exterior Sidewalls, Front and Rear Caps

Aluminum-Frame Sidewalls and Roof Construction, on 16" Center

5/8" Foam Insulation Laminated in Sidewalls and Ceiling

Automatic Mechanical Lock Arms on Slideout Rooms-Scissor Style

Polar Pak R19 Batten Insulation in Roof

Entrance Door Power Opening for Wheel Chair Lift on 3811

### OPTIONS

Egress Door with Ladder System\*

Power Entrance Step Well Cover on 3811

## WINDOWS, AWNINGS, & VENTS

One-Piece Tinted Windshield

Frameless Double Pane Tinted Safety-Glass Windows

Fan-Tastic® Vent with Rain Sensor in Kitchen and Bathroom

Skylight Above Shower

Carefree Travel'r Side Awning with Alumaguard and Strip Lighting

Rear Window in Bedroom\*

Slideout Covers

### OPTIONS

Screen Door Over Wheel Chair Lift Area on 3811

## CHASSIS FEATURES

Ford® F-53 Chassis with 7.3Ltr V-8 Engine, 24,000 lb.

Ford® F-53 Chassis with 7.3Ltr V-8 Engine, 26,000 lb.

Aluminum Wheels

Cruise Control

Tilt Steering Wheel

Anti-Lock Braking System

Electronic Stability Control

Auto Emergency Break, Distance Alert, Post Impact Braking and Lane Departure Warning

Driver Alert System and Message Center

Forward Collision Mitigation System, Adaptive Cruise Control, Auto High Beams and Passive Entry

## AIR CONDITIONING & HEATING

Two 13.5K BTU Penguin™ Heat Pump A/C, 5.5 Onan Generator, 50 Amp Service and Energy Management System

Dash Heater and Air Conditioner

Propane Gas Furnace with Ducted Heat

Defrost Fans Built into Front Overhead

### OPTIONS

Auxiliary Heater in Rear of Coach

## ELECTRICAL FEATURES

5.5 kW Onan® Generator with Remote Switch and Automatic Changeover

Four 12 Volt House Batteries

Battery Disconnect Switch for House Battery

12 Volt Auxiliary Receptacle on Dash

60 Amp Converter

Daytime Running Lights

Emergency Engine Start Switch

LED Ceiling Lights

LED Awning Strip Lighting

Lights in Exterior Storage Compartment

Lights in Wardrobe

Manually Operated Hold-To-Run Slideout Switch

Cable TV Connection

USB Outlet at Dash for Driver Use

USB Charger at Passenger Seat Area

Drain Lift Pump with 1200 Watt Inverter\*

Dash Radio, Cameras and Monitors to Power-Up from both House Batteries and Ignition

Multiplex Lighting Control System

Multiplex Monitor System 10.1 in Center of Coach with Interior Lighting and HVAC Controls

Two Wireless Phone Chargers in Cockpit



Power Rewind Reel with 33' Cord on 3811 only  
 Solar Panel 10 Watt to Charge Chassis Battery

**OPTIONS**

1200 Watt Inverter Ran to TV's\*  
 2000 Watt Pure Sine with CPAP Prep, Six 6-Volt Batteries  
 Power Rewind Reel with 33' Cord\*  
 Solar Prep with Six Gauge Wire Ran from Roof to First Storage Compartment

**PLUMBING & BATH FEATURES**

Demand Water System  
 Sewage Holding-Tank Rinse  
 Water Heater Bypass System  
 Dometic® 310 China Bowl Stool  
 ABS Shower Surround with Shower Door  
 Exterior Shower Located on Off Door Side  
 Systems Monitor Panel

**OPTIONS**

Water Filter for Entire Unit

**INTERIOR FEATURES**

Padded Vinyl Ceiling Panels  
 Decorative Wall Art  
 Mini Blinds in Kitchen and Bathroom Windows  
 Vinyl Floor in Kitchen, Living Area and Bathroom  
 Carpeting on Slideout floors  
 Interior Assist Handle at Main Entrance Door  
 Non-Quilted Fitted Bedspread and Accent Pillow  
 Inlaid Six Panel Design Interior Passenger Doors  
 Auto Motion Manual Double Roller Shades on Windows Behind Driver and Passenger Area  
 Auto Motion Power Shade at Windshield and Manual Shades at Driver and Passenger Side Windows  
 Dash Panel Color Coordinated ABS  
 Integrated Window Blind System on Entry Door  
 Shoe Storage Located in Entrance Door Step Compartment  
 Wastebasket in Kitchen Base Under Sink

**OPTIONS**

Vinyl Plank Floor in Place of Vinyl Tile

**CABINETS & FURNITURE**

Calypso Glazed Maple Mitered Flat Designer Cabinet Doors in Matte Finish  
 6-Way Power for Driver Seat  
 Manual Footrest on Passenger Seat  
 Concealed Hinges on Cabinet Doors  
 Drawers Underneath Booth Dinette Seats  
 Drawers with Full Extension Ball Bearing Guides  
 Pull-Out Pantry Shelves\*  
 Polished Solid-Surface Countertop in Kitchen with Undermounted Stainless Steel Sink and Sink Covers  
 Solid-Surface Countertops in Bathroom and Bedroom  
 Dinette Booth Williamsburg Sleeper  
 Williamsburg Sofa and Front Seats  
 Passenger Seat Tablet Holder  
 Lifts on Bed Top  
 Plush Pillow Top Mattress  
 Soft-Close Cabinet Drawers  
 Molded Silverware Divider Tray  
 Bed Base Lowered with Power Incline Head of Bed and Sleep Number® Deluxe Mattress on 3811

**OPTIONS**

Amaretto Glazed Maple Mitered Flat Designer Cabinets in Matte Finish  
 Arctic "B" Glazed Maple Mitered Flat Designer Cabinets in Matte Finish  
 Drop Down Bunk Bed Over Driver and Passenger Seats, Extends to Windshield with Front Overhead Cabinet and Bunk Ladder  
 Drop Down Bunk Bed Over Driver and Passenger Seats, Extends to Windshield with Bunk Ladder and Ctl and Fireplace with TV  
 Folding Cockpit Table  
 Dinette Combo Desk with Buffet Table, Two Fixed and Two Folding Chairs  
 Dinette Combo Desk with Free Standing Hidden Leaf Table, Two Fixed and Two Folding Chairs  
 Euro Booth Dinette with One Table Leaf  
 Sofa Inclinor 74" Non-Sleeper  
 Theater Seating 74" (Manual) with Reading Lights  
 Lowered (Fixed) Bed Base with Freestyle Glideaway Adjustable Bed Mechanism with Air Mattress and Window on 3811  
 Power Adjustable Height Bed Base with Freestyle Glideaway Bed Mechanism with Air Mattress and Window on 3811  
 Bed Base Full Height on 3811



## APPLIANCES & ACCESSORIES

Convection Microwave 30" Stainless Steel with Three Burner Cooktop and Air Fryer Feature

Convection Microwave Below Cooktop on 3811 Floor Plan

Norcold® 10 Cu. Ft. Refrigerator

6 gal. Gas/Electric Water Heater with Electric Ignition

### OPTIONS

Norcold® 15 Cu. Ft. 3-Door Refrigerator with Icemaker

110 Volt Heat Pads for Holding Tanks

30" Convection Stainless Steel Microwave with Aire Fryer Feature in Kitchen Overhead with a Drawer Below Cooktop on 3811 Only

Prep for Two-Piece Washer and Dryer

Splendide® Two-Piece Stacked Washer and Dryer

Truma Comfort Plus Continuous Hot Water Heater

Whirlpool® 11 Cu. Ft. Refrigerator with Ice Maker, Inverter 2000W Pure Sine with CPAP Prep, and Six 6-Volt Batteries

Whirlpool® 11 Cu. Ft. Refrigerator, Inverter 2000W Pure Sine with CPAP Prep, and Six 6-Volt Batteries

## AUDIO, VIDEO & ACCESSORIES

Samsung® LED TV in Living and Bedroom Areas (TV sizes vary per Floor Plan)

Axxera Dash Radio with Android Auto/Apple CarPlay® and SiriusXM® Ready, 10" Single Monitor

Dash Radio with Harman/JBL 180 Watt Sound System

High Definition Component Wiring

Rearview Colored Monitor System with Audio

Side-View Cameras Displayed onto Rear View Monitor Screen

Satellite Dish Prep on Roof

Winegard Digital Crank Up TV Antenna

10 Bc Fire Extinguisher, Smoke Detector, Propane and Carbon Monoxide Detector

TV Jack and 110 Volt Recept in Door Side Exterior Storage Compartment

### OPTIONS

Samsung® 43" LED TV on Televator with Fireplace in Place of Front Overhead TV on 3811 Only

Bose® Soundbar Sound System

Exterior Entertainment Center in Storage Compartment with Samsung® 32" LED TV and AM/FM Radio

Samsung® 32" LED TV in Front Overhead\*

WiFiRanger Denali/Spruce LTE

WiFi System Everest with Aspen Interior Router

Winegard Automatic Dome Satellite Dish-for DISH Std/HD, DIRECTV Std. and Bell Canada

Winegard Automatic Open Face Satellite Dish-for DISH HD and Bell HD TV

Winegard Automatic Open Face SWM Satellite Dish-for DIRECTV Std/HD

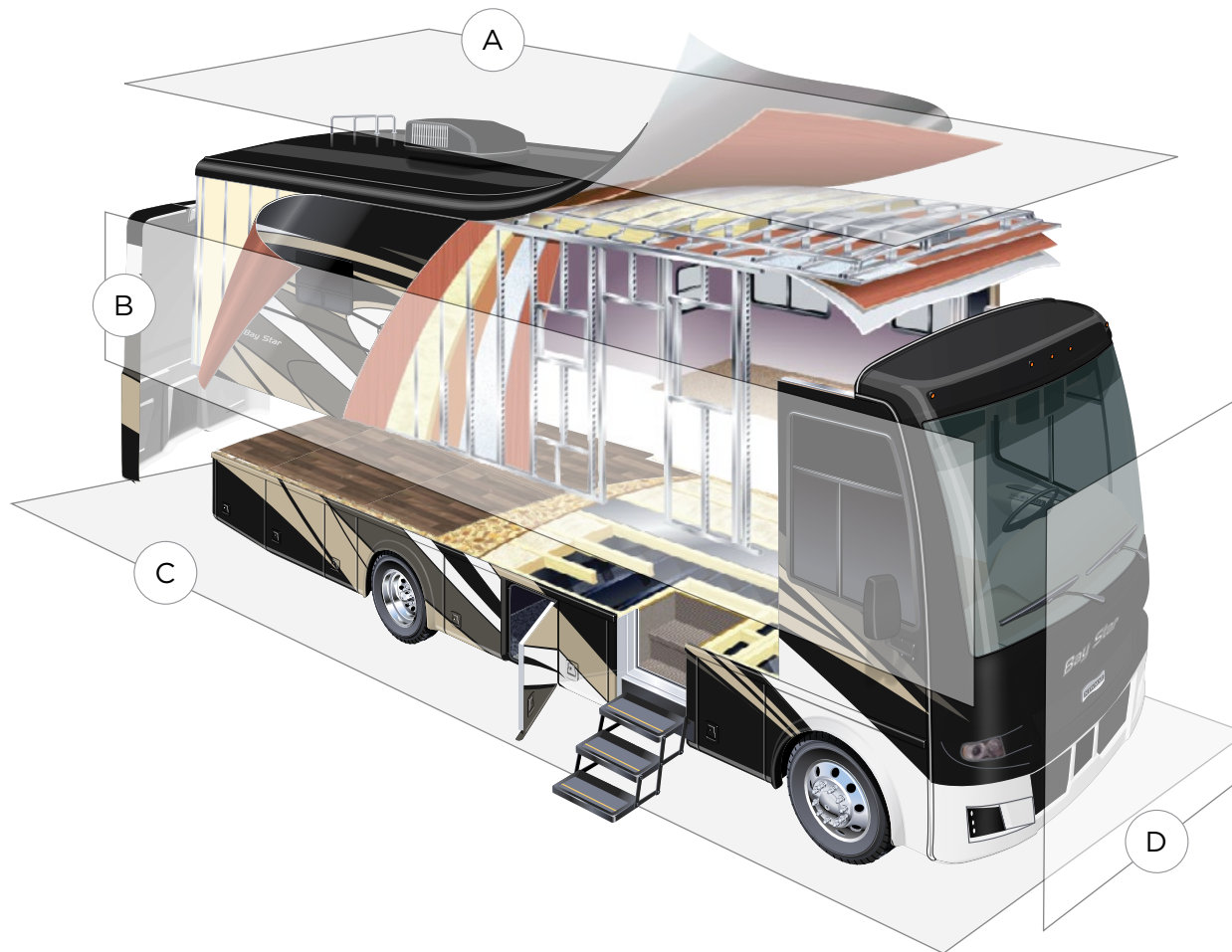
Winegard In-Motion Dome Satellite Dish-for DISH Std/HD, DIRECTV Std/HD and DIRECTV Std, and Bell Canada

Winegard Rayzar Automatic Digital TV Antenna









## A. ROOF

Fiberglass Roof  
 Batten Insulation  
 A/C Ducting  
 16" on Center Aluminum Rafter Framing  
 5/8" Bead Foam  
 3/8" Decking  
 Padded Vinyl Overlay

## B. SIDEWALL

Interior Wall Panel  
 5/8" Bead Foam  
 Batten Insulation  
 Composite One-Piece  
 Gelcoat Exterior Sidewall  
 Aluminum Framing

## C. FLOOR

Carpet/Tile  
 Carpet Padding  
 5/8" Floor Decking  
 Batten Insulation  
 16" on Center Wood Framing  
 Polyethylene Moisture Barrier

## D. EXTERIOR

Two 13.5K BTU Penguin™ Heat Pump  
 Central Air Conditioners  
 One-Piece Bonded Windshield  
 Coated Aluminum Wheels  
 Frameless, Double-Pane,  
 Tinted Safety Glass Windows  
 Side-Hinged Baggage Doors with  
 Optional Pull-Out Tray



# The Newmar Customer Experience

The Newmar Difference™ goes beyond our industry-leading motor coaches to provide you with an unrivaled ownership experience.



## Quality from the Start

Every Newmar is crafted one at a time by folks who have spent an average of eight years building them. And each coach we assemble must undergo more than 1,000 tests and checks before ever leaving our factory.



## Carefully Selected Dealers

We view our dealership network in terms of quality, not quantity. Each of our dealers acts as a partner in our shared mission to exceed your highest of expectations, for an ownership experience that's second to none from day one.



## Everything in One Place

As a Newmar owner, you'll find resources specific to your coach through Newgle, an easy-to-use knowledge base that houses everything from user guides to technical support documents.



## Friends for Life

Meet fellow owners through the Newmar Kountry Klub, a top social club for RV travelers that hosts rallies and other special events throughout the U.S. and Canada.



## Seamless Service

When you join the Newmar family, we pair you with a dedicated service specialist with expert knowledge of your exact coach. Our service specialists guarantee dealer warranty authorizations within four business hours and ship all in-stock parts the same day, free of charge.



## Rock-Solid Protection

All models include a one-year/unlimited mileage limited warranty and a five-year, non-transferable structural warranty that covers your coach's superstructure in the event it fails to perform. Ask your Newmar dealer for more details.



*Our Partners*

The Newmar Difference™ begins with suppliers dedicated to providing our customers with unrivaled quality, comfort, and support.



*BASF*

The Coatings division of BASF is a global expert in the development and production of innovative and sustainable OEM and refinish coatings. Coatings by BASF—solutions beyond your imagination.



*Industrial Finishes*

Industrial Finishes has supported RV manufacturers for over four decades, offering paint products that deliver uncompromising quality and provide your coach with a true Masterpiece™ finish.



Driven By You

*Freightliner  
Custom Chassis*

Freightliner Custom Chassis are renowned for their exceptional ride, excellent maneuverability, advanced technology, and nationwide 24/7 factory-direct support.



*RiverPark*

From Samsung® 4K TVs and Xite Infotainment systems to Bose® soundbars and JBL and Infinity premium audio systems, RiverPark helps you experience a higher level of technology in your Newmar coach.



*Spartan RV Chassis*

An American company with over 30 years of experience in designing and manufacturing the premier motorhome chassis, Spartan delivers superior performance, exceptional safety ratings, and industry-leading technology.





WHEN YOU KNOW THE DIFFERENCE<sup>SM</sup>