

2013 ESSEX - Luxury Motor Coach



NEWMAR CORP.



WHEN YOU KNOW THE DIFFERENCESM

2013
Essex

Luxury Motor Coach



2013 ESSEX

Luxury Motor Coach

There's no better way to signal that you've arrived. Especially when you arrive in the well-appointed elegance of the 2013 Essex from Newmar. From a stylishly flowing exterior that boasts a sleek new molded front and the mirror-sheen of Newmar's multi-coat Masterpiece™ Finish. To a 500HP diesel power plant and driver control systems that make the miles melt away. To an interior with a level of convenience and amenities designed to redefine the good life.

**This is comfort. This is craftsmanship.
This is Newmar.**

*Essex Exterior
Fleming Designer Style*

Comfortable elegance at your command.

Enter the cockpit of your 2013 Essex and you become the captain of life's next great adventure. Comfort Drive™ Steering, a Newmar exclusive, lets you maneuver with a light touch, while Nav-N-Go® GPS guidance gives you touchscreen access to any destination. From climate control to cabin entertainment, every conceivable control is a fingertip away. And with Ultra Leather heated seats for both driver and passenger, your copilot enjoys a pampered ride, too.

Step outside your Essex and you'll see the same attention to ease and enjoyment. Like a Sony® 40" LED HDTV behind an exterior panel, for the best in off road entertainment. And enhanced-height storage compartments with access from either side – plus a power-assisted slide tray* that lets you effortlessly put cargo in its place.

*Optional



Prepare to be transported to a new level.

The sleek beauty of Newmar's Essex hides impressive power waiting to be unleashed. The heart of the beast is the most dependable engine from Cummins®, a 12 ISX 500HP diesel titan that gives you all the maneuverability and power you could ask for, with an Allison® 4000 MH transmission that provides a truly muscular drive train. For reliable electrical output with low noise, a Cummins Onan® Quiet Diesel™ Generator offers peak performance. And a Spartan® K2 Chassis with 20,000 lb. IFS (Independent Front Suspension) houses the complete package. Strength and style never looked so good.



Cummins Onan



FEATURES AT A GLANCE

- Full-paint Masterpiece™ Finish with super clear coat
- Comfort Drive™ steering with power column
- Nav-N-Go® navigation system with dash touchscreen
- Ultra leather heated driver/passenger seats with 8-way power
- Cummins Onan® Quiet Diesel™ Generator
- Spartan® K2 chassis with 20,000 lb. IFS
- Cummins 12 ISX 500 HP Engine
- Power sliding storage tray with either side access*

*Optional



*Essex Interior
Fleming Décor Scheme with Amaretto Glazed Maple
Cabinetry in Floorplan # 4544*

More than you expect. Nothing less than you deserve.

Step into the newly redesigned Essex interior and you're in a spacious world of discriminating details and creature comforts. Newmar quality and craftsmanship surround you, from the imported high-gloss European porcelain tile beneath your feet to the visually striking ceiling above your head, reengineered for enhanced airflow.

Your guests will sink into Ultra Leather Villa furniture, then take in accents like the uniquely handcrafted scrollwork fascia, a Newmar specialty. Meanwhile, you're preparing something special in a homelike kitchen that features solid surface countertops and Amaretto Glazed Maple hardwood cabinets. Bon appétit.

There's no such thing as a minor detail.

With the 2013 Essex, even the small things matter. Like an inlaid backsplash of wave glass, residential caliber faucets and fixtures and a variety of accent lighting options to set any mood.



FEATURES AT A GLANCE

- Polished solid surface countertop in the kitchen
- Villa furniture
- Designer feature ceiling
- Sony® surround sound system with subwoofer
- All-electric Whirlpool® residential refrigerator*

*Optional





Life is good.
So are your
surroundings.

Excitement is where you find it. Sometimes it's on the road. Other times, it's as close as your Sony® 40" LED HDTV with 5.1 Surround Sound. With the 2013 Essex, you and your traveling companions can enjoy the best seats in the house from anywhere in the main cabin. Luxurious Ultra Leather furniture – including a Queen Air Sleeper Sofa* – and a powered dinette table that adjusts to add personalized comfort.

FEATURES AT A GLANCE

- Sony® 40" LED HDTV with Blu-ray™
- Power duo day/night privacy window shades*
- Xite® AM/FM/Sirius® satellite radio-ready
- Ultra Leather dinette ensemble with powered adjustable table*

SONY®

Dreams don't come any sweeter.

With everything that awaits when you retire to your Essex bedroom, it seems a shame to ever fall asleep. Your entertainment choices range from a second Sony® 40" HDTV with Blu-ray™ player to a Bose® Wave Radio/CD. A SilverLeaf® touchscreen module provides complete control of the essentials, including room temperature. The king size Sleep Number® Bed assures his and hers comfort. And the distinctive furnishings, including solid hardwood headboard with burlled inlays and a canopy-like overhang with accent lighting, add simple pleasures to every waking moment.

Unsurpassed Newmar quality lets you sleep easy.

You spend fully a third of your life in bed. Considering the amenities and styling that are a hallmark of the sleeping quarters in every Essex, those could be the most anticipated hours in your day.

SONY.



FEATURES AT A GLANCE

- King size bed with Sleep Number® control mattress
- Silverleaf® multiplex control system
- BOSE® Wave radio with CD and alarm
- Electric heat under the floor tile*
- Polished solid surface bedroom night stands and chests

*Optional





FEATURES AT A GLANCE

- Polished solid surface shower walls with decorative inserts
- Demand water system with Aquajet™ “ES” pump
- Fold-down teak shower seat*
- Polished solid surface bathroom counter with double sinks
- Polished solid surface half bath counter with single sink



Refresh. Reinvigorate. Relax.

Your Essex Luxury Coach brings you the comfort and convenience of a master bath as fully featured as that in any home. The centerpiece: a 40”x 32” residential shower with polished solid surface walls, subway glass tile, optional teak seating and a skylight port to add pleasant natural light. A polished counter vanity with double sinks and matching medicine cabinets gives both of you room to freshen up for the next leg of your journey.

Exquisite touches that travel well.

Optional heated floors. An extra half bath for guest convenience. Power-Duo Shades* that balance visibility with privacy. Newmar thinks of everything. Because Newmar knows how you travel.

Newmar.

Where the finest names in quality and performance are along for the ride.

To assure that you experience only the best in comfort, control and unsurpassed convenience in our incomparable family of Luxury Coaches, Newmar partners with the most prestigious names in mobile lifestyle, entertainment and technology. These brands are leaders in their fields—and legends in providing customers with new, unsurpassed levels of quality and reliability.

Best in class performance from names you can trust. At Newmar, that's our difference. And our promise.



Mahlon Miller, Newmar founder, and Matthew Miller, Newmar president, lifelong motor coach enthusiasts

Gather.

Where the Newmar owners are.

The Newmar Kountry Klub is an exclusive club for owners of fine Newmar products that offers many advantages and benefits to its members. Learn more at: www.newmarkountryklub.com

Trust.

The strongest possible foundation for a motor coach.

According to Newmar president Matthew Miller, “Customers say they’re loyal to us because they trust us to stand behind our products, from support, parts and service to paying our warranties. It feels good to own a coach that has all of that behind it.”

How do we sustain this high level of service? At Newmar, there’s a Miller way of doing things. These principles guide us every day. Courtesy. Integrity. And reliability. So when you buy from Newmar, you know that every single person who touches your coach or talks with you has your back. Period.

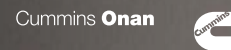


WHEN YOU KNOW THE DIFFERENCE

CUMMINS ONAN · Performance You Rely On™

An innovator in standby and mobile power generation for more than 80 years, Cummins Onan generators are built by Cummins Power Generation, a globally recognized name in the design and manufacture of power generation products and services.

www.cumminsonan.com



FREIGHTLINER CUSTOM CHASSIS · Driven by You

A subsidiary of Daimler Trucks North America, Freightliner Custom Chassis Corporation manufactures premium chassis that have become renowned for their exceptional ride and handling characteristics, tight turning radius and extraordinary dependability.

www.freightlinerchassis.com



SONY · make.believe™

One of the most comprehensive entertainment and technology companies in the world, Sony Corporation is a leading manufacturer of audio, video, communications and information technology products for consumers and professionals alike.

www.sony.com



SPARTAN CHASSIS · The Premier Foundation

Spartan Chassis is a world class leader in the design, engineering and flexible production of chassis and components that consistently deliver superior performance, exceptional safety ratings and technological innovations.

www.spartanchassis.com



EXTERIOR DESIGN & DÉCOR OPTIONS

FENWICK



AMELIA



CATALINA



FLEMING



WOOD OPTIONS



SABLE MAPLE



GINGER GLAZED
CHERRY HIGH GLOSS

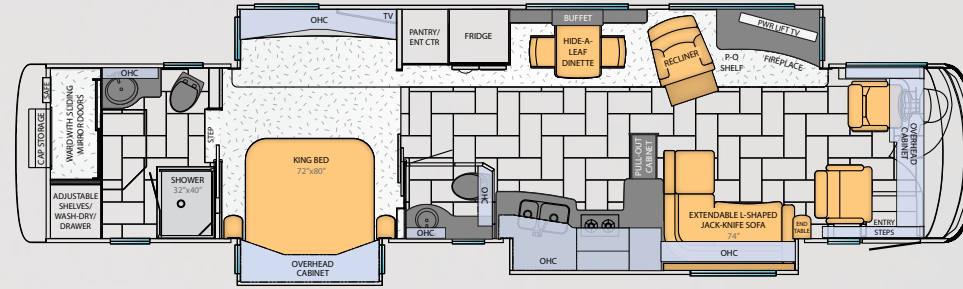


AMARETTO GLAZED
MAPLE

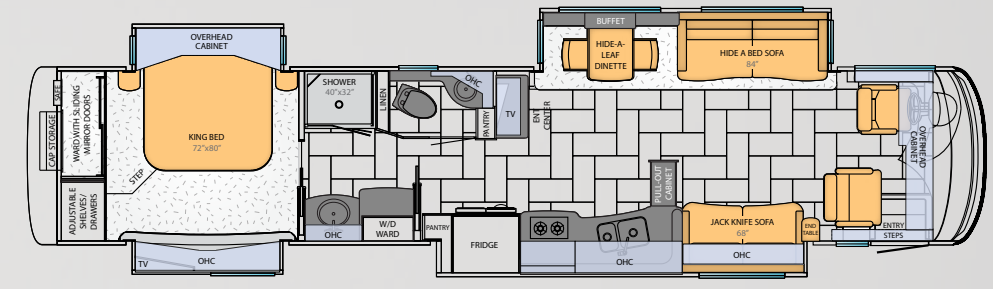


RATTAN GLAZED
MAPLE

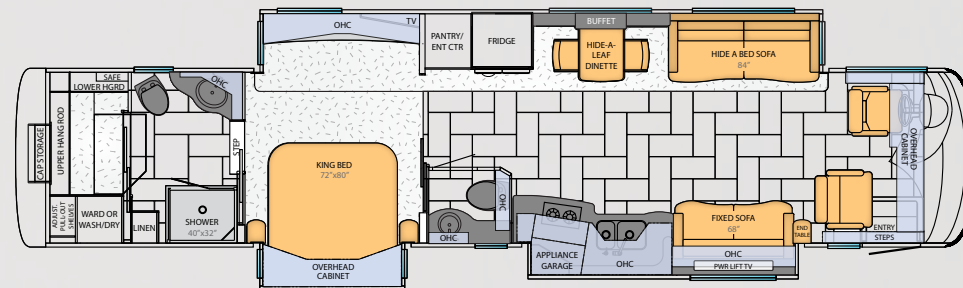
FLOORPLAN OPTIONS



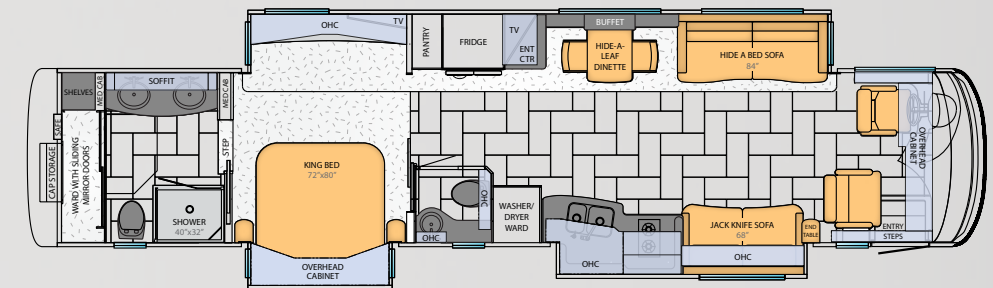
4548



4542



4547



4544

FLOORPLAN SPECIFICATIONS

Floorplan	Approx. Overall Length	Width	Approx. Overall Height	Interior Width	Interior Height	Grey	Sewage	Water	Propane	Furnace
4548	44' 11"	101.5"	12' 11"	95.5"	84"	65 gal.	45 gal.	105 gal.	22 gal.	50,000 btu
4547	44' 11"	101.5"	12' 11"	95.5"	84"	65 gal.	45 gal.	105 gal.	22 gal.	50,000 btu
4542	44' 11"	101.5"	12' 11"	95.5"	84"	65 gal.	45 gal.	105 gal.	22 gal.	50,000 btu
4544	44' 11"	101.5"	12' 11"	95.5"	84"	65 gal.	45 gal.	105 gal.	22 gal.	50,000 btu

CONSTRUCTION & SPECIFICATIONS

The Spartan® K2's strong chassis with 20,000 lb. IFS (Independent Front Suspension) is the highest performing motor coach ever. Its tubular truss web frames and substructure beams form a foundation stable enough to allow extensive pass-through storage. This – and Essex's GVWR of 52,000 pounds, with a 12,000 pound tag axle, allows Essex to expand beyond its chassis footprint, creating extra living space. Its Cummins® 12 ISX 500 Hp engine gives you incredible maneuverability and power, even on steep inclines.



CHASSIS SPECIFICATIONS

Floor-plan	Engine HP	Axle Ratio	Fuel Cap.	Wheel Base	Front GAWR*	Rear GAWR*	Tag GAWR*	GVWR*	GCWR*	App. UVW	App. NCC
4548	500	4.33	150 gal.	294+TAG	20,000 lb.	20,000 lb.	12,000 lb.	52,000 lb.	67,000 lb.	41,300 lb.	10,700 lb.
4547	500	4.33	150 gal.	294+TAG	20,000 lb.	20,000 lb.	12,000 lb.	52,000 lb.	67,000 lb.	41,300 lb.	10,700 lb.
4542	500	4.33	150 gal.	294+TAG	20,000 lb.	20,000 lb.	12,000 lb.	52,000 lb.	67,000 lb.	41,500 lb.	10,500 lb.
4544	500	4.33	150 gal.	294+TAG	20,000 lb.	20,000 lb.	12,000 lb.	52,000 lb.	67,000 lb.	43,550 lb.	8,450 lb.

ROOF R-VALUE = 24

- Fiberglass Roof
- Fiberglass Batten Insulation
- A/C Ducting
- Aluminum Rafter Framing
- Kraft Paper Vapor Barrier
- 5/8" Bead Foam
- 3/16" Panel
- Padded Vinyl Overlay

FLOOR R-VALUE = 16

- Carpet/Tile
- Carpet Padding
- 5/8" Floor Decking
- Fiberglass Batten Insulation
- 2"x3" Wood Framing
- Polyethylene Moisture Barrier

SIDEWALL R-VALUE = 11

- 3/16" Plywood Interior Wall
- 5/8" Bead Foam
- Kraft Paper Vapor Barrier
- Fiberglass Batten Insulation
- 3/16" Plywood Exterior Wall
- Composite One-Piece Gelcoat Exterior Sidewall
- Aluminum Framing with 3 1/2" Header Above

BASEMENT R-VALUE = 4

- Cargo Liner
- 3/8" Floor Decking
- 3/16" Luan Panel
- 1 1/2" Bead Foam
- Aluminum Sheeting with Steel Support Rails to Prevent Bowing and Flexing

- 15M Penguin™ Heat Pump Central Air Conditioners (3)
- One-Piece Bonded Windshield
- Coated Aluminum Wheels
- Frameless, Double-Pane, Tinted Safety-Glass Windows
- Side-Hinged Baggage Doors

Lengths, heights, widths and dry weights are approximate. Weight will vary based on optional equipment added to the above base weight.

GAWR: Gross Axle Weight Rating is the maximum permissible weight for an axle.

GVWR: Gross Vehicle Weight Rating is the maximum permissible weight for a fully loaded motor coach.

GCWR: Gross Combination Weight Rating is the value specified by the manufacturer of the vehicle as the maximum allowable loaded weight of this motor coach and any towed trailer or towed vehicle.

UVW: Unloaded Vehicle Weight is the weight of this motorcoach as built at the factory with full fuel, engine oil and coolants. The UVW does not include cargo, fresh water, propane gas or dealer-installed accessories.

NCC: Net Carrying Capacity is the maximum weight of all occupants, including the driver, personal belongings, food, fresh water, waste water, propane gas, tools, tongue weight of towed vehicle, dealer-installed accessories, etc., that can be carried by the motorcoach.

*Specifications supplied by the chassis manufacturer.

CHASSIS FEATURES

- Spartan® K2 Chassis with IFS
- Cummins® 12 ISX 500 HP
- Allison® 4000 MH Transmission
- Tag Axle
- Remote Engine Start Station
- Automatic Traction Control
- Comfort Drive™ Steering with Power Column and Adjustable Control
- Non-Polish Aluminum Wheels
- HWH® Four-Point Hydraulic Jacks with single Touch Control and Chassis Air Leveling
- Power Tilt-and-Telescope VIP Smart Wheel®
- Memory Settings for Drivers Seat, Pedals, Steering Wheel and Exterior Mirrors
- Cruise Control
- Recessed Fuel Fills with Crossover to Fill from Either Side
- Back-Up Alarm
- Anti-Lock Braking System
- Front Disc Brakes
- Electronic Chassis Information Display in Dash
- Tire Pressure Monitor System
- Chassis Service Center
- Leece-Neville 270-Amp Alternator
- 55-Degree Cramp Angle

APPLIANCES & ACCESSORIES

- 30" Convection Microwave Oven
- Two-Burner Recessed Cooktop
- Norcold® 12 Cu.Ft. Four-Door Refrigerator with Icemaker and Water Dispenser
- One-Piece Washer/Dryer Prep
- Sony® 40" LED TV in Living & Bedroom Areas (TV sizes vary per floorplan)*
- Sony® 46" LED TV on Televator behind Fireplace*
- TripTek™ Electronic Travel Information (Displayed on Rearview Monitor)
- Sideview Cameras with Image Displayed on Rearview Monitor Screen
- Sony® Surround Sound System with Sub-Woofer

- Bose® Wave Radio with CD Player and Alarm Clock in Bedroom
- Xite® AM/FM/SIRIUS® Satellite Radio-ready with CD and Touch Screen Monitor (Does not Include SIRIUS® Monthly Subscription)
- "Nav-N-Go"® Navigation System Displayed through Dash Touch Screen Monitor
- 8.5" x 11" Safe in Bedroom Wardrobe
- Pre-programmed Universal Remote Control
- High Definition component Wiring and HD-ready Video Switching System
- Sony® Blu-ray™ CD/DVD Player in Bedroom

AIR CONDITIONING & HEATING

- Three 15M Penguin™ Heat Pump Central Air Conditioners with Remote Control Thermostat
- Hydronic Zone Diesel Heating System
- Roof Air Conditioning Drainage System

CABINETS & FURNITURE

- Sable Maple Hardwood Unitized Cabinets with Fully Overlaid Cabinet Doors
- Polished Solid Surface Countertop in Kitchen with Integrated Sink Bowls and Flush Sink Covers
- Polished Solid Surface Countertop in Bathroom with Integrated Bowl
- Polished Solid Surface Countertop on Bedroom Nightstands and Chests
- Residential Style Full Extension Ball Bearing Drawer Guides
- Concealed Hinges on Cabinet Doors
- Drawers with Dove Tailed Sides.
- Villa Furniture
- Ultra Leather/Vinyl Heated Driver Seat with Eight-Way Power, Power Lumbar and Power Recline
- Ultra Leather/Vinyl Heated Passenger Seat with Eight-Way Power, Power Lumbar, Power Recline and Power Footrest

- Cedar Paneling in Rear Wardrobe
- King Bed with Hardwood Raised-Panel Bed Base

ELECTRICAL FEATURES

- 12.5 kW Cummins Onan® Diesel Quiet Generator on Hydraulic Slide and Auto Changeover
- 50-Amp Electrical Service with Flexible Cord on Power Cord Rewind Reel
- Four 6-Volt House Batteries on Pullout Tray
- 5-Watt Solar Panel to Charge Chassis Battery
- 2,800-Watt Pure Sine-Wave Inverter with Automatic Generator Start
- Mid-ship Side Turn Signals
- Recessed Docking Lights
- LED Lights Recessed in Ceiling and Overhead Cabinets
- Switched Receptacle for Engine Block Heater
- Battery Disconnect Switch
- Emergency Engine Start Switch
- Exterior Security Lights, One Installed on Each Side
- ICC Light Flasher Switch
- Mood Lights Recessed in Feature Ceiling, Lambrequins, Kitchen Valance, Bed Base and Fascia
- Solar Prep Wire from Roof to Charge House Batteries
- Exterior Security Lights, One Installed on Each Side
- Silverleaf® Multiplex Control System

PLUMBING & BATH FEATURES

- Demand Water System with Aquajet™ "ES" Pump
- Thetford™ Aria Electric Flush China Stool (Thetford™ Macerator Flush Stool in Rear Baths)
- Drawers with Dove Tailed Sides.
- Two Monitor Panels (One Interior & One in Exterior Water Compartment)
- MANABLOC® Plumbing System
- Auto Water-Fill System
- Whole House Water Filter
- Polished Solid Surface Shower Walls with Decorative Inserts

WINDOWS, AWNINGS & VENTS

- Frameless, Double-Pane Tinted Safety-Glass Windows
- Fan-Tastic® Vent with Rain Sensor in Kitchen Area and Bathroom
- Driver's-Side Power Window
- Girard® Power Bedroom and Slideout Window Awnings
- Two Girard® Integrated Power Box Side Awnings with Remote Controls
- Girard® Power Front Entrance Door Awning

INTERIOR FEATURES

- Designer Feature Ceiling
- Power Duo Day/Night Privacy Window Shades (Windshield and Driver/Passenger Side Windows)
- Lined Day/Night Pleated Window Shades & Lambrequins
- Polished Solid Surface Window Sills
- Polished Porcelain Floor Tile in Kitchen, Bathroom, Living Areas
- Raised-Panel Interior Passage Doors
- Power-Activated Sun Visors
- 10 Bc fire Extinguisher, Carbon Monoxide and Smoke Detectors
- Shoe Storage Shelves Recessed into Rear Cap Wardrobe

EXTERIOR FEATURES

- Full-Paint Masterpiece™ Finish with Super Clear Coat & Front Protective Film
- One-Piece Bonded Windshield
- Chrome Trim Package
- Exterior Storage Compartments Finished with Cargo Liner
- Stainless Steel Kick Panel at Entrance Door
- Convex Exterior Chrome Mirrors with Remote Control, Defrost and Turn Signals
- Dual latch Front Door with Power Flush Stepwell Cover
- Power Locking Baggage Doors
- 15,000 lb. Towing Hitch with Two Extra 14 Gauge Wires

- Holding Tank Levels Displayed in Exterior Water Works Compartment
- Mud Flaps
- Keyless Entry with Doorbell and Touch Pad

OPTIONS

CHASSIS FEATURES

- VORAD® Adaptive Cruise System

AIR CONDITIONING AND HEATING

- Electric Heat under Floor Tile

APPLIANCES & ACCESSORIES

- 30" Advantium™ Speedcook Microwave Oven
- Dometic® Freezer on Pullout Tray
- Whirlpool® Two Piece Washer and 220-Volt Dryer in Full Length Wardrobe*
- Fisher & Paykel DishDrawer®*
- All-Electric Unit Whirlpool® Refrigerator, two Burner Cooktop and Four Extra Batteries *
- Sony® 40" LED TV in Front Overhead Cabinet*
- Sony® 46" LED TV on Power Lift Behind Door Side Non-Sleeper Fixed Sofa
- Remote-Controlled Rearview Color Camera
- Sideview Cameras with Image Displayed on Rearview Monitor Screen
- Exterior Entertainment Center Located in Sidewall with Sony® 40" LED TV
- External Entertainment Center Located in Storage Compartment with Sony 32" LED TV, AM/FM Radio and CD Player
- KVH R-6 In-Motion Satellite without Receiver
- Central Vacuum with Deluxe Tool Kit
- Dyson® Hand Held Vacuum
- Security System
- Exterior Monitor for Navigation System on Passenger Side
- Secondary Multiple Touch Screen Control in Bedroom

CONSTRUCTION FEATURES

- Mechanical Lock Arms on All Slideout Rooms

CABINETS & FURNITURE

- Amaretto Glazed Cherry Hardwood Cabinets
- Rattan Maple Glazed Hardwood Cabinets
- Ginger Glazed Cherry Hardwood Cabinets with High-Gloss Finish
- Villa Ultra Leather Sofa/Dinette Ensemble with Two Folding Chairs*
- Villa Two Ultra Leather/Vinyl Recliners*
- Villa Extenda "L" Sofa on off Door Side
- Villa Extenda Face to Face Dinette
- Sleep Number® Air Mattress for Main Bed

ELECTRICAL FEATURES

- Roof-Mounted Spot Light
- AGM House Batteries (Available only with All Electric Option)

EXTERIOR FEATURES

- Large Storage Tray with Access from One Side or Either Side
- Power Sliding Storage Tray

INTERIOR FEATURES

- Polished Porcelain Floor Tile Extended into Bedroom
- Power Duo Day/Night Window Shade System throughout Living Area
- Power Silhouette Window Shades

PLUMBING & BATH FEATURES

- Assist Handle in Shower*
- Fold Down Shower Seat

*Check with dealership on floorplan availability and complete listing of features.

NEWMAR EXPRESS LIMITED WARRANTY

Every Essex Diesel Pusher is backed by Newmar's one-year limited warranty/unlimited miles. Ask your Newmar dealer for details.

LIMITED FIVE-YEAR STRUCTURAL WARRANTY

If any part of your Newmar recreational vehicle superstructure (which is the steel/aluminum structure of the sidewall, roof or frame) fails to perform properly within five years from the date of purchase because of faulty workmanship or material supplied by Newmar, it will be repaired without charge for either parts or labor by Newmar. This structural warranty is available only to the original purchaser and is non-transferable.

Some features in our literature are optional. Colors and finishes are photographic representations. The actual materials may look different. Prices, specifications and floorplans are subject to change at Newmar's discretion, without prior notice or obligation. Please see your dealer for actual samples and specifications.



WHEN YOU KNOW THE DIFFERENCE™

NEWMAR CORPORATION

355 N DELAWARE ST
PO BOX 30
NAPPANEE IN 46550-0030
574-773-7791 Fax 574-773-2895

www.newmarcorp.com