

**TOP FEATURES**

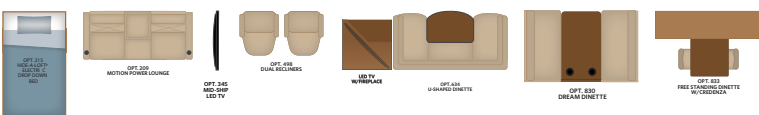
- Freedom Bridge®
- Aqua Hot 400D  
*Provides unlimited hot water and comfortable even interior heat while eliminating the need for propane.*
- Wifi Ranger Sky Pro 4 w/LTE, 300 watt solar panel, and cellular booster available on all floorplans
- Hand laid porcelain tile flooring through out
- Heated floor in living area
- MultiPlex house controls that can be controlled by your smart phone or tablet
- Roof Mounted GIRARD Awnings
- Residential Styled Apex Custom Furniture
- Solid Surface countertops throughout
- Solid Hardwood Cabinetry

**Freightliner® Custom Chassis Features**

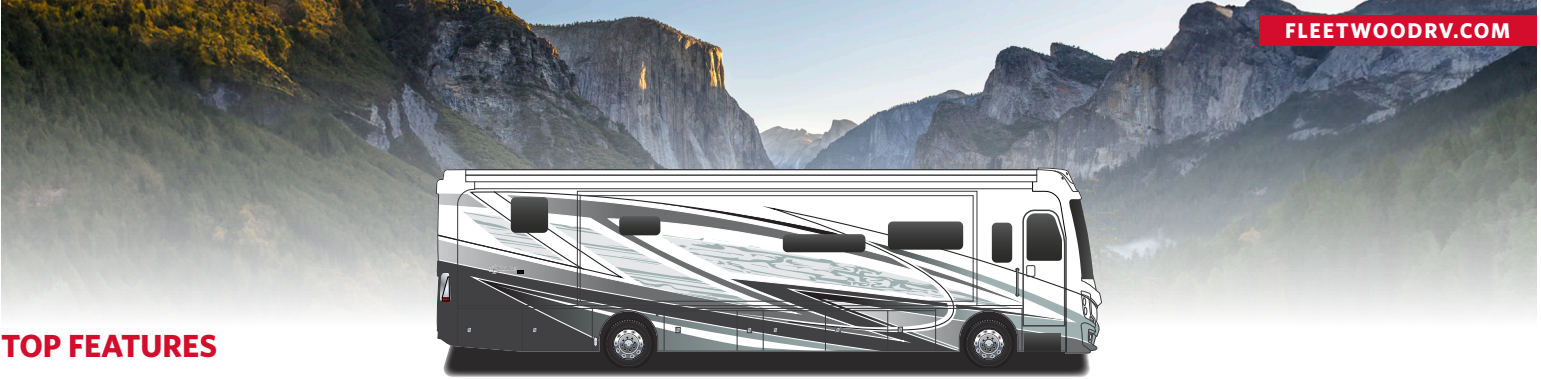
- Freightliner® Custom Chassis - XCM
- Cummins L9 450HP/ 1250 ft. lb of torque (44B & 44S) & 380HP/1150 ft. lb of torque (40G & 40M)
- ZF Independent Front Suspension and a generous wheel cut of up to 60 degrees (44B & 44S) Ultra Steer Tag Axle (44B & 44S)
- V-Series Suspension System with the VFS Front Suspension (40G, 40M)
- V-Ride™ technology (*enhanced stability*)
- BrakeSync (*standard*)
- Tire Pressure Monitoring (*standard*)

**AVAILABLE OPTIONS**

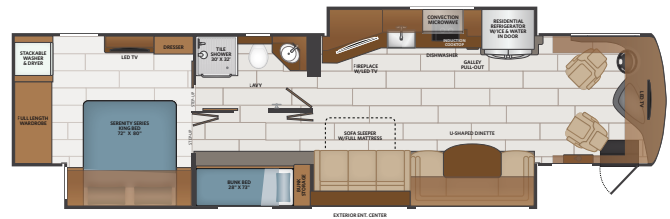
- Motion Power Lounge
- Hide-A-Loft™ Electric Drop Down Bed
- Mid-Ship LED Panel TV (40M)
- Dual Recliners (44B)
- Technology Package (Wifi Extender Pro Pack w/LTE, Cell Booster, 330W Solar Panel, Collision Mitigation by Mobile Eye, Firefly Eclipse Module - enabling remote access from app via WiFi)
- U-Shaped Dinette (44S)
- Dream Dinette (40M & 44B)
- Free Standing Dinette w/ Credenza (44B)
- Heated Tile Floor - Rear
- Satellite Dish - In-Motion - Winegard
- Exterior Freezer
- Roof Mounted Patio Awning 2nd Doorside
- Window Awning Package
- AC's w/Condensation Pump
- BlindSpot Detection
- 2nd Full Bay 90" Slideout Tray
- Starlink System



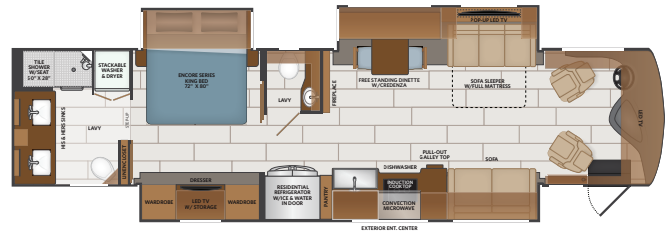
TO LOCATE A DEALER NEAR YOU VISIT OUR WEBSITE AT FLEETWOODRV.COM



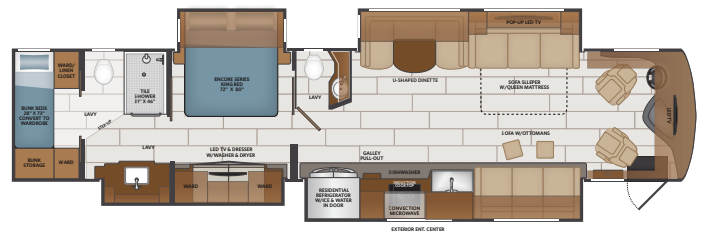
40G



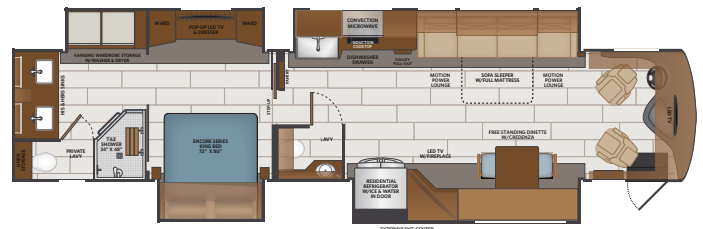
40M



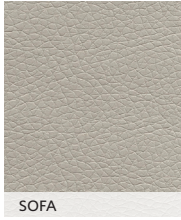
44B



44S



AMARETTO



SOFA



LIVING ACCENT



FLOORING



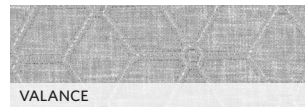
BEDDING



BACKSPLASH



COUNTERTOP



VALANCE



WINTER FOG

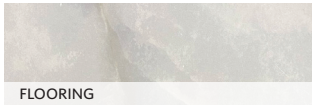
ANTHOLOGY



SOFA // ROASTED ALMOND, HAZELNUT & WINTER FOG OPTION ONLY



LIVING ACCENT



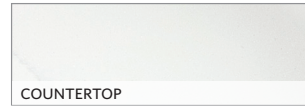
FLOORING



BEDDING



BACKSPLASH



COUNTERTOP

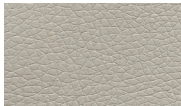


VALANCE



ROASTED ALMOND

SERENITY



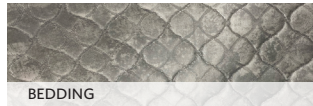
SOFA



LIVING ACCENT



FLOORING



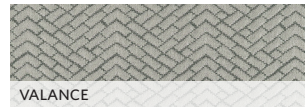
BEDDING



BACKSPLASH



COUNTERTOP



VALANCE



HAZELNUT

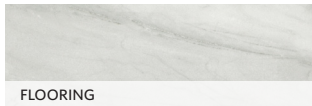
SIGNATURE



SOFA



LIVING ACCENT



FLOORING



BEDDING



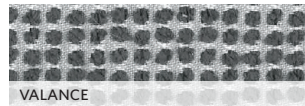
BACKSPLASH



COUNTERTOP // ROASTED ALMOND, HAZELNUT & WINTER FOG OPTION ONLY



COUNTERTOP // SEDONA OPTION ONLY



VALANCE



SEDONA

CHASSIS

MODEL	40G	40M	44B	44S
Wheelbase	276"	263"	309"	309"
Front GAWR (lbs)	12,600	12,600	13,600	13,600
Rear GAWR (lbs)	24,000	24,000	20,000	20,000
Tag GAWR (lbs)	—	—	10,000	10,000
GCWR (lbs)	46,600	46,600	58,600	58,600
Hitch Rating Weight (lbs)	10,000	10,000	15,000	15,000
Tongue Weight (lbs)	1,000	1,000	1,500	1,500
Fuel Capacity (gal)	100	100	100	100

FREEDOM BRIDGE® CHASSIS

**40G, 40M**  
Model: Freightliner® Custom Chassis - XCM  
Engine: Cummins ISL 9L, 380HP  
Torque: 1,150 lb.-ft.  
Transmission: Allison® 3,000 MH 6-Speed  
Alternator: Delco Remy 160 Amp

FREEDOM BRIDGE® CHASSIS

**44B, 44S**  
Model: Freightliner® Custom Chassis - XCM  
Engine: Cummins ISL 9L, 450HP  
Torque: 1,250 lb.-ft.  
Transmission: Allison® 3,000 MH 6-Speed  
Alternator: Delco Remy 160 Amp



DIMENSIONS & CAPACITIES

MODEL	40G	40M	44B	44S
Overall Length	41' 4"	40' 1"	44' 0"	44' 0"
Overall Height	12' 10"	12' 10"	12' 10"	12' 10"
Overall Width*	102"	102"	102"	102"
Interior Height*	84"	84"	84"	84"
Interior Width*	96"	96"	96"	96"
Patio Awning Width	18'	18'	18'	18'
Interior Storage (cu. ft.)	168	133	180	177
Exterior Storage (cu. ft.)	157	142	157	152
Fresh Water Capacity (gal)	105	105	105	105
Grey Water Capacity (gal)	75	75	75	75
Black Water Capacity (gal)	50	50	50	50

\*Overall Width, interior height and width measured with slide-box in.

EXTERIORS

