



04 DIPLOMAT by Monaco

04 DIPLOMAT

A WHOLE NEW WORLD OF POSSIBILITIES.



DETAILS, DETAILS, DETAILS.

Don't be deceived by the Diplomat's casual, easygoing elegance. At its root is an uncompromising emphasis on quality. This year, we've assembled a collection of four beautiful interiors, each with a wide selection of optional fabric and Ultraleather™ furnishings. The stunning hardwood cabinetry features solid wood raised panel doors and satin nickel hardware. And this year, you'll find plush new carpeting throughout the coach, full valance window treatments, new decorative lighting, and attractive new hardwood slide-out fascia.

① The Diplomat is the coach more and more discriminating buyers turn to when it's time to enter the world of luxury motorcoach living. Why? Because with so many choices of floorplans, interiors and optional features, you have everything you need to customize the coach of your dreams.

② *The 40PBDD **LIVING ROOM** in South Pacific with Regal Cherry woodwork.*

③ *The Diplomat **LIVING ROOM and KITCHEN, 40DST,** in Indigo with Regal Cherry woodwork.*









WHERE DRIVER AND COACH COME TOGETHER AS ONE.

Take the helm of the Diplomat, and you're in firm control of all its power. Automatic Traction Control and Anti-lock Braking Systems combine to make this one of the safest coaches on the road. Plus, you have before you a wide array of features, including the color rear vision system with audio, CB radio prep, audible turn signals and optional power sunvisors. This year you'll also enjoy the luxury styling of the all-new fiberglass dash, with beige instrument panel and a handy co-pilot workstation.



Our plush **ULTRALEATHER™ COCKPIT SEATS** are designed for maximum comfort, with the safety belts mounted on the chairs. The pilot's seat features the convenience of six-way power controls, and on the co-pilot's side, you have the option of six-way power controls, a power footrest and an extra-wide seat. Some new cockpit features include a center console with drawers and cup holder, as well as a nicely rounded tile entryway.

This year, the coach offers some exciting entertainment options, such as a **HOME THEATER SYSTEM** with **DVD PLAYER**, a **10-DISC CD CHANGER**, and the **SIRIUS** satellite radio system (requires subscription).



START PLANNING YOUR MENUS.

The Diplomat's well-appointed kitchen serves up endless possibilities to make every meal more enjoyable. You'll find top-of-the-line appliances like a large double-door refrigerator with raised panel doors, a recessed three-burner cooktop and a spacesaver convection microwave with touch control. The new radius solid surface countertop features a solid surface/tile backsplash and a stainless steel sink with sink covers. You'll also appreciate the convenience of a separate faucet for filtered water. And underfoot, you'll enjoy the style and quality of the ceramic tile floor or optional laminated plank flooring.



- ① The Diplomat comes standard with our remarkable **LEGLESS DINETTE** table with solid surface top, two beautifully upholstered chairs and two folding chairs. In addition, the dinette area is wired with a computer hook-up and phone jack, making it the perfect place to plug in your laptop and take care of business or catch up on e-mail.

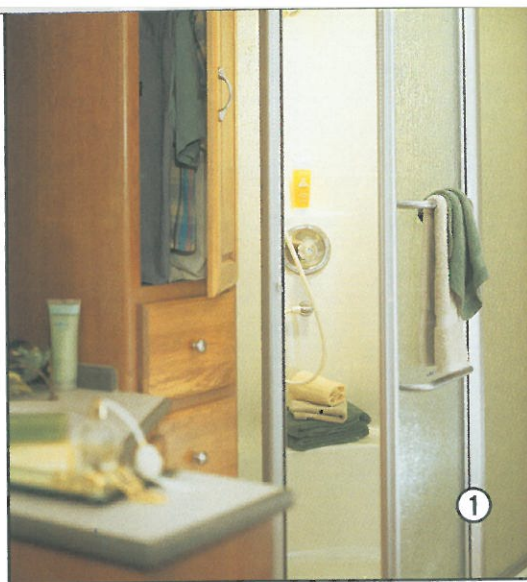
- ② This **SYSTEMS CONTROL CENTER** allows you to monitor your coach's electrical systems all in one place, with easy access.





① In the **BATHROOM**, you'll love the seamless styling of the vanity's solid surface countertop and integrated sink. The shower features a new single-handle faucet, and satin finish hardware adds a fresh, contemporary look.

② The Diplomat **BEDROOM**, 40DST, in Indigo with Regal Cherry woodwork.





OUR LUXURY ACCOMMODATIONS WILL FOLLOW YOU ANYWHERE.

The Diplomat pampers you with its gracious interior and roomy storage space. Its many features include an oversized mirrored wardrobe closet, a dresser and nightstands with solid surface tops and blackout shades. You'll also enjoy a 19" stereo color TV with remote control. And you'll love the privacy and convenience of our remarkable bath-and-a-half floorplan.

③ *The 40PBDD **BEDROOM** in South Pacific with Regal Cherry woodwork. Notice the beautiful hardwood bath door, headboard and slide-out fascia, details that makes the Diplomat so special.*

THIS IS THE LOOK OF A LEADER.

The 2004 Diplomat proudly wears its distinctive quality on its exterior for all to see. This year the coach features the elegant look and superior durability of deluxe full-body paint, making it truly a leader in its class.

On the redesigned front cap, you'll find power heated remote mirrors and newly styled headlights and fog lights, as well as a larger windshield and a new wiper system. It all adds up to a powerful first impression.



① The standard Onan® 6.5 LP Generator or optional 7.5 kW Quiet Diesel Generator is conveniently housed in the front bay, for easy servicing.

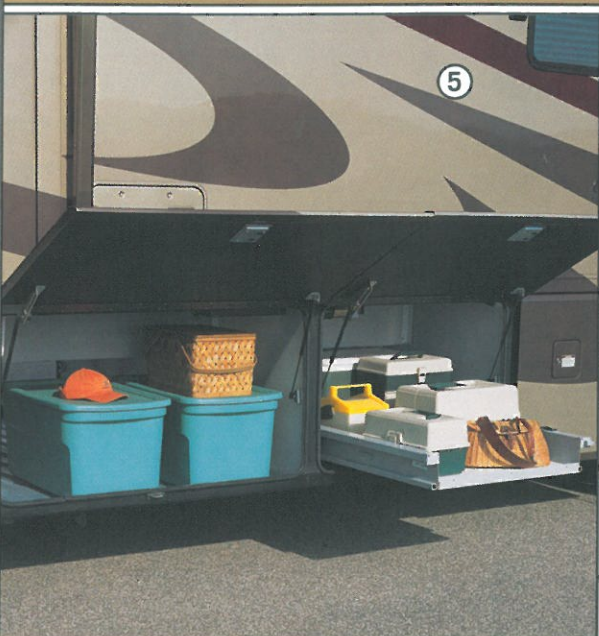
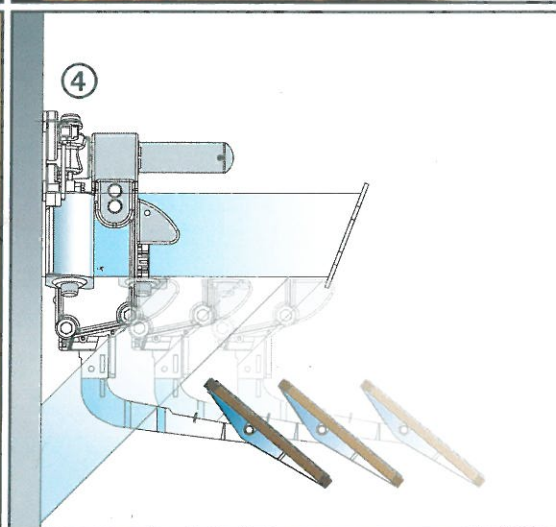
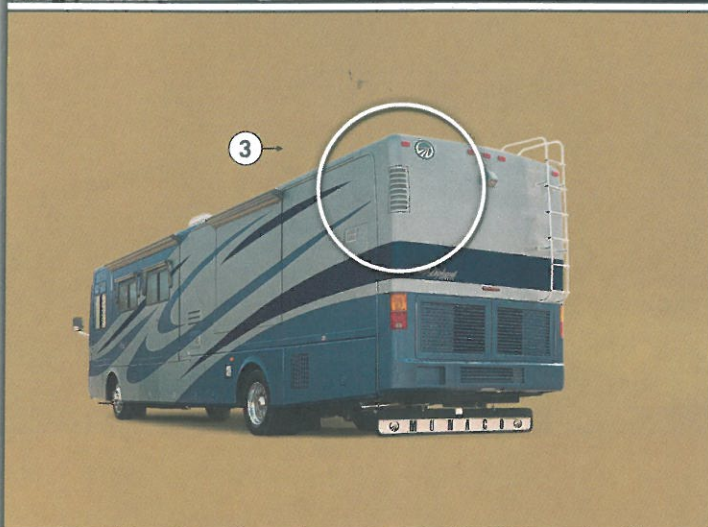
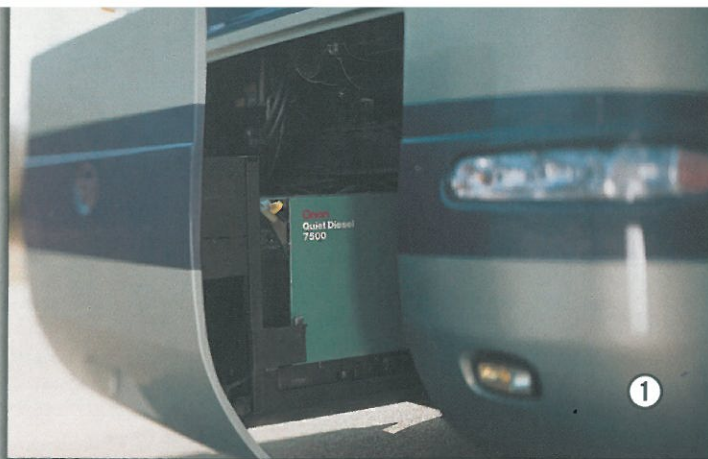
② We've redesigned the **FLUSH MOUNT POWER STEP-WELL COVER** (N/A: 40PDT)

③ This year, we've relocated the **AIR INTAKE** to the top corner of the rear cap. This provides cooler, cleaner air to the engine, prolonging the life of the air filter and resulting in increased power for the coach.

④ The Diplomat easily accommodates drivers of all heights, thanks to our **ADJUSTABLE BRAKE AND ACCELERATOR PEDALS**. It's yet another safety-minded innovation brought to you by Monaco.

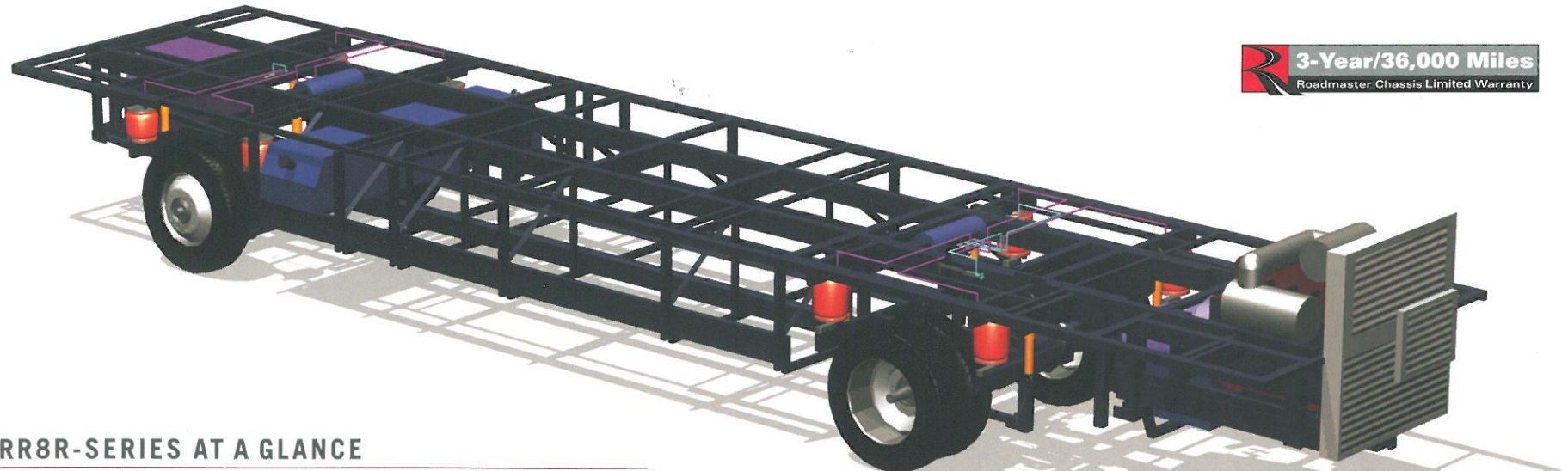
⑤ You'll be free to take along everything you need to make your trips more fun, thanks to the coach's large **PASS-THROUGH STORAGE COMPARTMENTS**. In addition, you can make loading and unloading even easier with an **OPTIONAL SLIDE-OUT TRAY**, like the one shown here.

⑥ Lighted, insulated central **UTILITY BAY**.



ONLY A ROADMASTER CAN DRIVE A MONACO.

Want to know the secret to the best ride and handling in the industry? A custom-built chassis by Roadmaster. You see, Roadmaster chassis are designed to the exacting specifications of each and every model of our diesel coaches. That means you'll never find this year's coach on last year's chassis. And you'll always know you're riding on a chassis that's designed exclusively for a luxury diesel motorhome. So take a moment to learn about a few of the Roadmaster's impressive features. Because only this kind of highly synchronized teamwork can give you this level of performance.



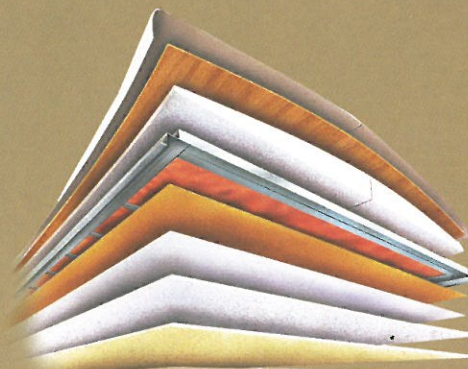
RR8R-SERIES AT A GLANCE

- H-frame cushion Air Glide Suspension with eight outboard mounted air bags work in conjunction with eight gas-powered shock absorbers to prevent road trauma from ever reaching the coach.
- Steel cage cockpit provides maximum safety.
- Monitored leveling sensors continually adjust the air pressure at each axle to maintain a level ride and eliminate nosediving, weight transfer, and floating on curved roads. This system also stabilizes the coach on uneven surfaces.
- A 10,000 lb. tow hitch rating is the highest in its class.
- Dual fuel fill gives you the convenience of filling the fuel tank from either side of the coach.

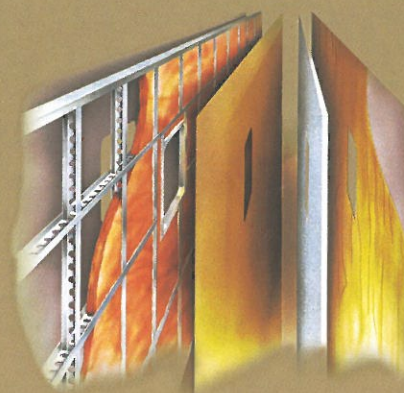
- The exclusive raised rail design provides for larger full pass-through storage bays with flush floors. The rails are positioned 44 inches apart at the engine for lower engine mounting. The drive line is carried straight into the engine for less vibration. And maximum airflow provides the engine with leaner, cooler air and increased power.
- Anti-lock brakes give you the confidence of superior stopping power, and the Automatic Traction Control (ATC) takes over in slick conditions and applies torque to the wheels to reduce slippage and heighten control.
- Other features include a 3/8" thick frame rail — compared to the 1/4" of other manufacturers — as well as a stacked aluminum charged-air-cooler, aluminum radiator, and external aluminum transmission cooler for optimum heat transfer and cooling.

ROOF LAYERS: (TOP TO BOTTOM)

- a. Peaked aluminum roof
- b. Luaun backing
- c. Thick, tapered bead foam insulation
- d. Aluminum double I-beam superstructure filled with fiberglass insulation
- e. Vapor barrier
- f. Structure foam: thermal insulative barrier
- g. 1/2" bead foam insulation
- h. Foam padding for extra insulation
- i. Padded vinyl ceiling



1



2

WALL LAYERS: (LEFT TO RIGHT)

- a. High-gloss gel coat fiberglass
- b. Interlocking C-Channel filled with 1-1/2" fiberglass insulation glued in place so it doesn't sag or leave spaces uninsulated
- c. Vapor barrier
- d. Bead foam adds comfort, saves energy and provides a thermal insulative barrier
- e. Interior paneling

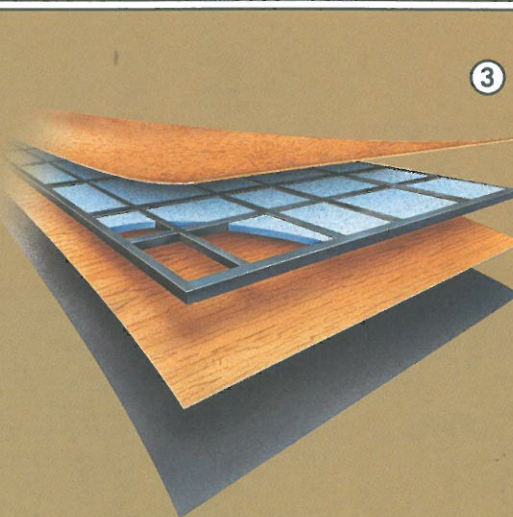
All Monaco **SLIDE-OUT** boxes feature an aluminum interlocking design that's both strong and lightweight, with multi-layer construction for superior insulation.



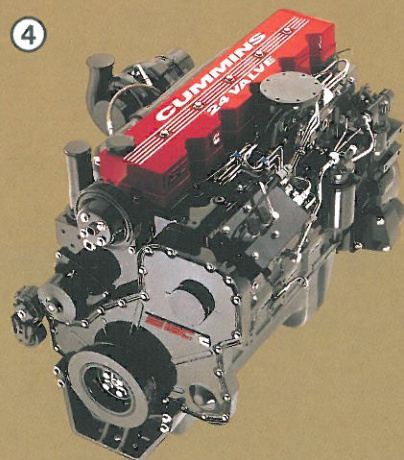
FLOOR CONSTRUCTION: (BOTTOM TO TOP)

- a. Darco
- b. Luaun
- c. Blue foam
- d. 1-1/2" steel tube
- e. 5/8" Structurwood™

The Diplomat features a gutsy standard **CUMMINS® ISC 330** diesel engine with **Allison® 3000 MH** 6-speed world transmission and electronic shifter.



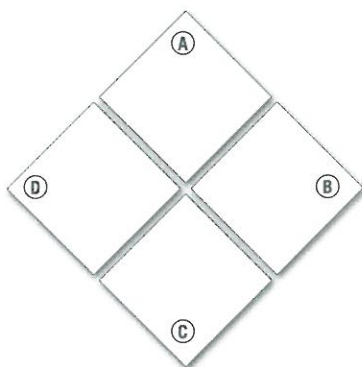
3



4

EXTERIOR COLORS, FABRICS AND WOODS

For 2004, our designers have selected exquisite fabric combinations for each model of the Diplomat. Now, it's your turn to choose.



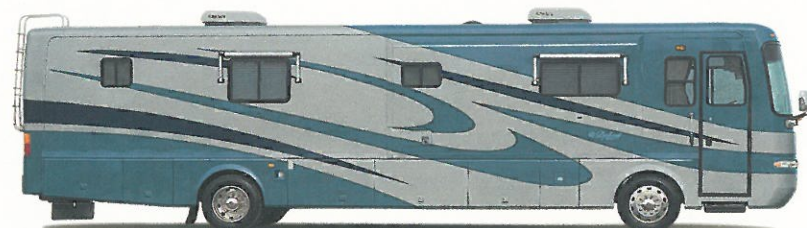
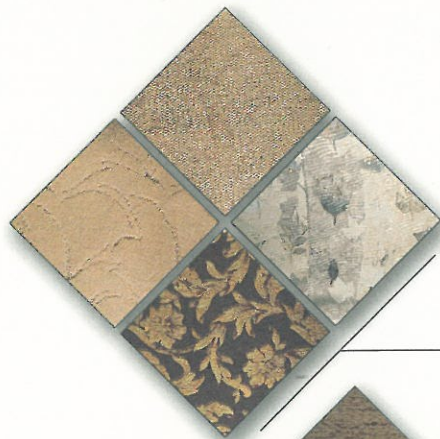
FABRIC SWATCHES

- A. *Sofa*
- B. *Bedsread*
- C. *Dinette Chairs*
- D. *Carpet*

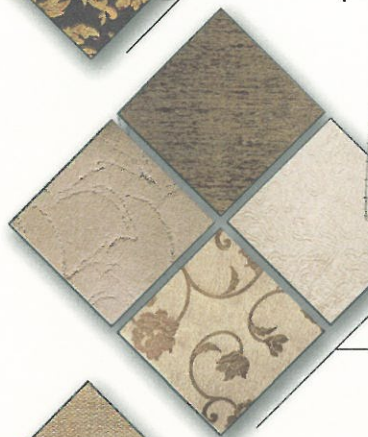


Dupont Teflon® soil repellent is applied to virtually all upholstery fabric during the finishing process for superior coverage.*

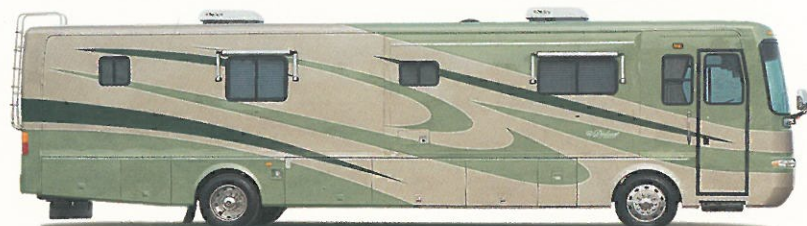
*Brand and application of carpet or upholstery fabric protection may vary depending on date recreational vehicle was manufactured.



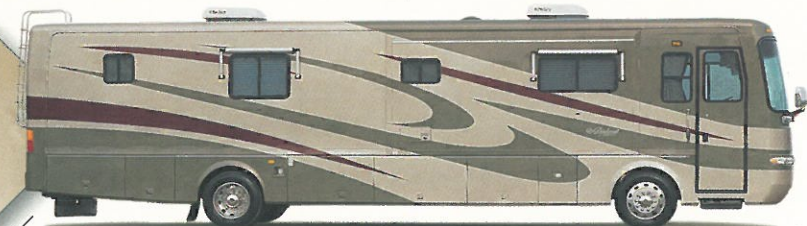
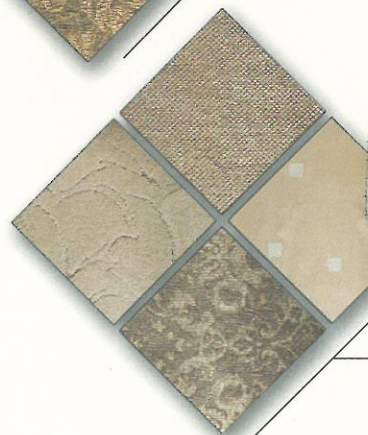
INDIGO



IRISH CREAM



SOUTH PACIFIC



STONE HARBOR

WOOD CHOICES



Vintage Oak



Regal Cherry



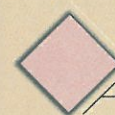
Maple

In addition, Wilsonart® plank flooring is optional in the kitchen and bathroom, in a selection of styles to match your choice of woodwork.

04 FLOORPLANS

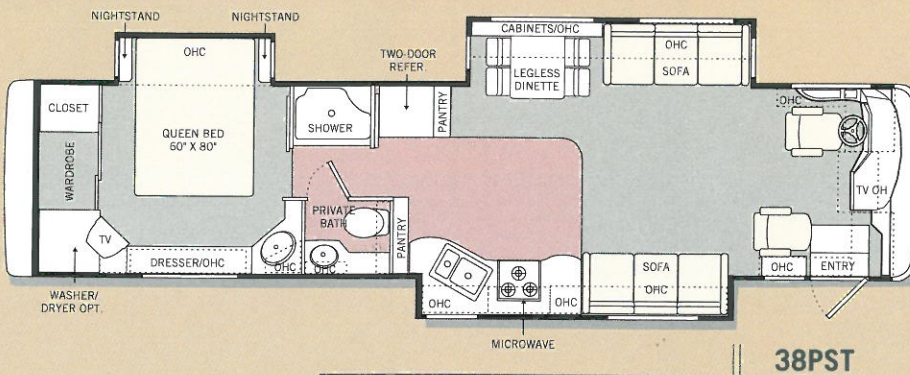
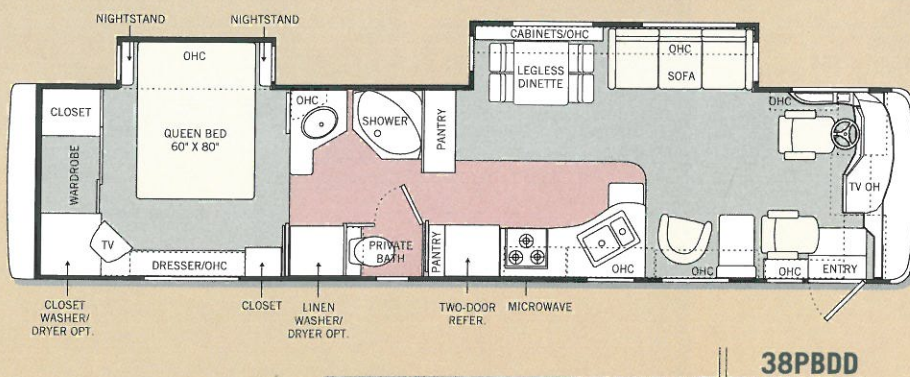
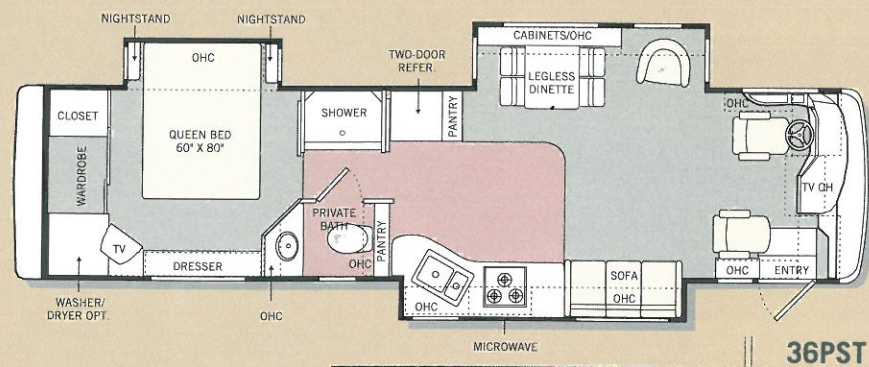


CARPET

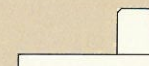


TILE

MONACO FLOORPLANS
CAN BE CUSTOMIZED WITH
MANY POPULAR OPTIONS.



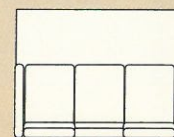
FABRIC/LEATHER RECLINER
IN REGULAR OR EURO STYLE
(N/A: 38PST, 40DST, 40PST,
40PRT, 40PDQ)



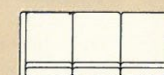
COMPUTER TABLE
(REQUIRES RECLINER,
40PBDD ONLY)



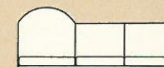
MAGIC BED SOFA



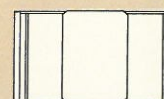
EASY BED SOFA
(N/A: 38PBDD, 40PDT)



ELECTRIC SOFA
(N/A: 36PST)



J-LOUNGE
(N/A: 38PBDD, 40PDT)



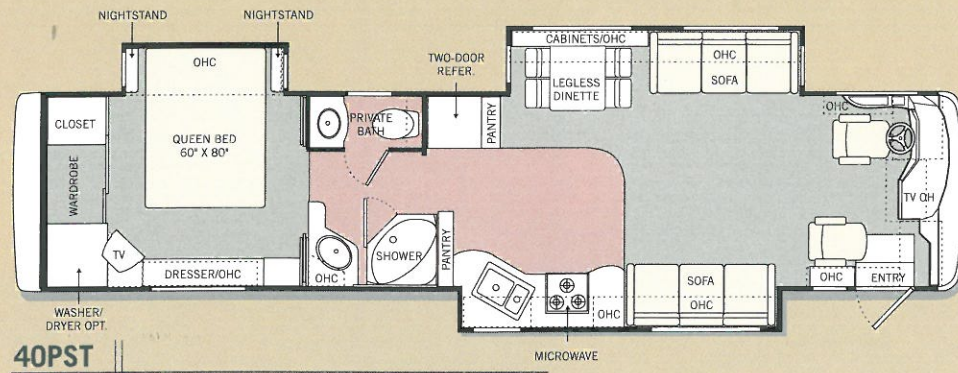
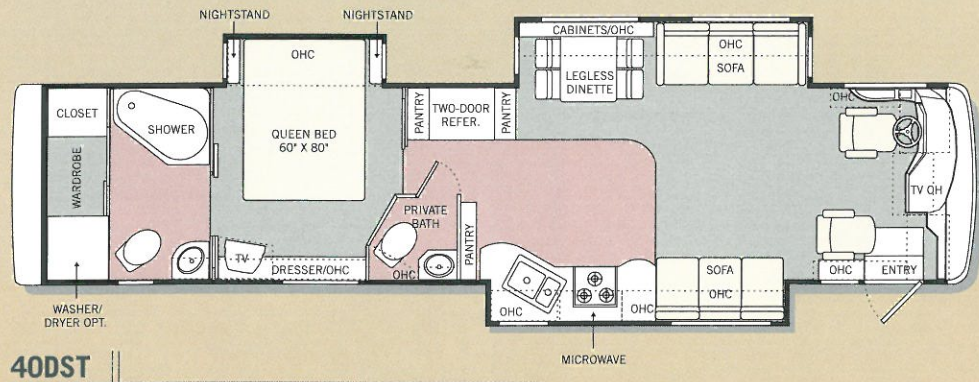
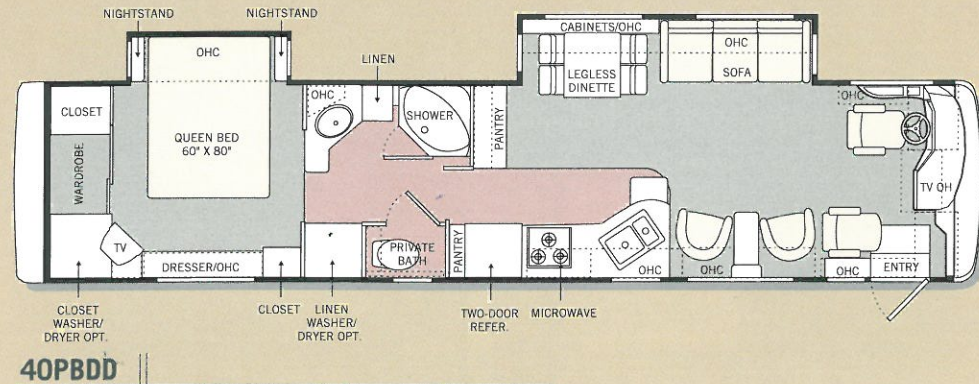
BOOTH DINETTE
(N/A: 40PDT)

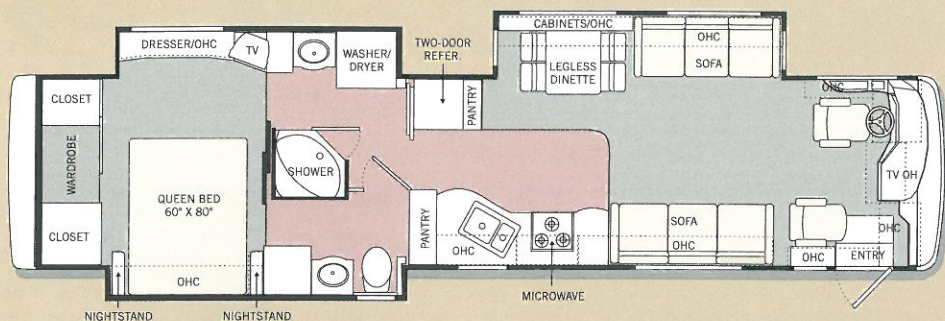
04 FLOORPLANS, CONTINUED

Monaco is proud to offer you a wide range of floorplans to suit your lifestyle. As you can see here, you have numerous optional features from which to choose.

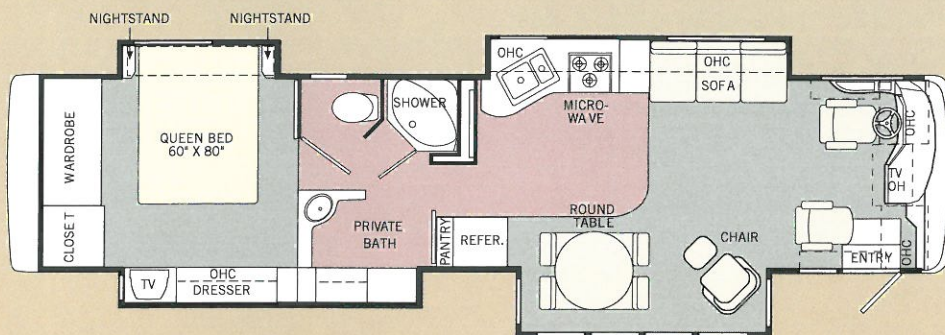


Find all the latest product news and updates online:
monacocoach.com

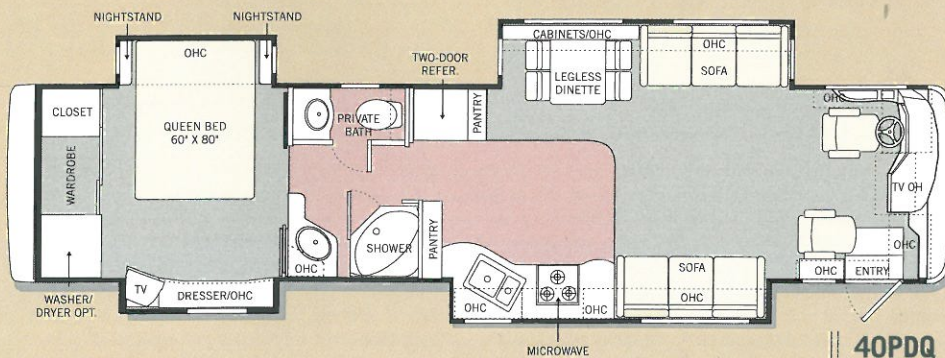




40PRT



40PAQ



40PDQ

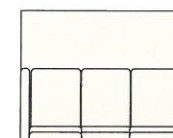
**MONACO FLOORPLANS
CAN BE CUSTOMIZED WITH
MANY POPULAR OPTIONS.**



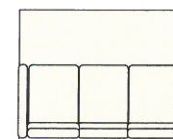
FABRIC/LEATHER RECLINER
IN REGULAR OR EURO STYLE
(N/A: 38PST, 40DST, 40PST,
40PRT, 40PDQ)



COMPUTER TABLE
(REQUIRES RECLINER,
40PBDD ONLY)



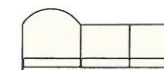
MAGIC BED SOFA



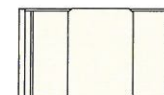
EASY BED SOFA
(N/A: 38PBDD, 40PDT)



ELECTRIC SOFA
(N/A: 36PST)



J-LOUNGE
(N/A: 38PBDD, 40PDT)



BOOTH DINETTE
(N/A: 40PDT)



Find all the latest product news and updates online:
monacocoach.com

2004 SPECIFICATIONS

WEIGHT RATINGS (LBS.)	36PST	38PBDD	38PST	40PBDD	40DST	40PST	40PRT	40PAQ	40PDQ
Gross Vehicle	32,000	32,000	32,000	32,000	32,000	32,000	32,000	32,000	32,000
Gross Combined*	42,000	42,000	42,000	42,000	42,000	42,000	42,000	42,000	42,000
Front Gross Axle	12,000	12,000	12,000	12,000	12,000	12,000	12,000	12,000	12,000
Rear Gross Axle	20,000	20,000	20,000	20,000	20,000	20,000	20,000	20,000	20,000

MEASUREMENTS

Wheelbase	216"	242"	242"	256"	256"	256"	256"	256"	256"
Overall Length	36' 7"	38' 9"	38' 9"	39' 11"	39' 11"	39' 11"	39' 11"	39' 11"	39' 11"
Overall Height (with A/C)	12'	12'	12'	12'	12'	12'	12'	12'	12'
Interior Height	78"	78"	78"	78"	78"	78"	78"	78"	78"
Interior Width	94 1/2"	94 1/2"	94 1/2"	94 1/2"	94 1/2"	94 1/2"	94 1/2"	94 1/2"	94 1/2"
Exterior Width	100 1/2"	100 1/2"	100 1/2"	100 1/2"	100 1/2"	100 1/2"	100 1/2"	100 1/2"	100 1/2"

TANK CAPACITY (GAL.) All tank capacities are estimated based upon calculations provided by the tank manufacturers and represent approximate capacities. The actual "usable capacity" may be greater or less than the estimated capacities based upon fabrication and installation of the tanks.

Water Heater	10	10	10	10	10	10	10	10	10
Gray Tank	60	60	60	60	60	60	60	60	60
Black Tank	39	39	39	39	39	39	39	39	39
Fresh Tank	95	95	95	95	95	95	95	95	95
LP Tank ¹	38	38	38	38	38	38	38	38	39
Fuel Tank	100	100	100	100	100	100	100	100	100

¹ Actual filled LP capacity is 80% of listing due to safety shut-off required on tank.

*Towing capacity is limited by GVWR; your vehicle's towing capacity is the difference between the GCWR and the actual vehicle weight, including all water, fuel, passengers and cargo. Your towed vehicle should be equipped with auxiliary brakes if the weight of the towed vehicle exceeds 1,000 lbs. Consult your owners manual for further towing information.

The actual overall length of the recreational vehicle may differ from that indicated in the brochure due to variances in the manufacturing process and/or installed components. The actual length may be greater or less than indicated. Due to the large variety of options and floorplan arrangements available to our customers, actual weights for each unit can differ significantly. Monaco Coach provides a weight sticker on each unit we produce which includes that unit's tank capacities and approximate weight. Consult your local Monaco Coach dealer for unit availability and further information. The information printed in this brochure reflects product design, fabrication, and component parts at the date of printing. The manufacturer reserves the right, at any time, to make changes in product design or material or component specifications as its sole option, without notice. This includes the substitution of components of a different brand or trade name which will result in comparable performance. All information printed in this brochure is subject to change after the date of printing. Some features shown or mentioned in this brochure are optional and may only be available in selected floorplans. Photographs may show props or decorations that are not standard equipment on Monaco Coach models. Monaco Coach, the Monaco logo and its design, are registered trademarks. All other products and company names are trademarks and/or registered trademarks of their respective holders. While the color of the motorhome's exterior and the interior fabrics depicted in this sales brochure are fair and reasonable depictions, the colors depicted may not be an exact match of the actual colors because of the variances in photo-processing and variances caused by inserting the photographs within the sales brochure. Due to product improvements, changes during the model year and/or transcription errors that may occur, information represented within this brochure may not be accurate at the time of your purchase. If certain information is significant to your purchasing decision, please confirm the information with your dealer prior to submitting your order.

2004 STANDARDS AND OPTIONS

BODY CONSTRUCTION

Alumaframe® Superstructure
Steel Cage Cockpit Construction
Peaked Aluminum Roof
with Fiberglass Insulation
Smooth Gel Coat Fiberglass
Exterior Walls

Front and Rear Molded Fiberglass
Caps with Integrated Bumpers
Laminated Structurwood™ Flooring
Power Step Well Cover (N/A: 40PDT)
Foam Insulated Underbelly
with Luaun Backer

Baggage Doors with Integrated
Single Handle Latches
Wheel Mud Flaps
Deluxe Full Body Paint
Entry Step Storage
Rear Ladder

OPTIONS

3M® Film Front Mask
Chrome Power Heated Remote
Exterior Mirrors
Full Length Monaco Mud Flap
Storage Bay Slide-Out Tray
(Pass-Through)

COCKPIT

Fiberglass Automotive Dash
with Beige Instrumentation Panel
CD Player/Radio with Six Speakers
Color Rear Vision System with Audio
Intermittent Windshield Wipers
Audible Turn Signals
Tilt/Telescopic Steering Wheel

Power Steering
Dual Roof Mounted Air Horns
Cup Holder
Ultraleather™ Pilot and Co-Pilot
Seats with Six-Way Power Pilot Seat
Carpet Driver and Passenger
Floor Mats

Adjustable Accelerator
and Brake Pedals
CB Prep with Antenna

OPTIONS

Six-Way Power Co-Pilot Seat
Six-Way Power Co-Pilot Seat
with Power Footrest

Extra-Wide Six-Way Power Co-Pilot
Seat with Power Footrest
Power Sunvisors
Ten-Disc CD Changer
Sirius Satellite Radio System
(Requires Subscription)
Dash Fans

APPLIANCES AND ACCESSORIES

Double-Door Refrigerator
with Raised Panel Doors
Recessed High Output
3-Burner Cooktop
Spacesaver Convection Microwave
with Touch Control
25" Stereo Color TV
with Remote in Living Area
Living Area Stereo TV Wired through
Ceiling Speakers

19" Stereo Color TV with Remote
in Bedroom
Home Theater System with DVD
Player
TV Antenna and Booster
Cable TV Hook-Up and Telephone Jacks
Digital Satellite System Prep
Washer/Dryer Prep

OPTIONS

Double-Door Refrigerator
with Ice Maker
Four-Door Refrigerator with Ice Maker
High Output 3-Burner Range
with Oven
Combination Washer/Dryer
Home Theater System
with DVD Player
DVD Player

Stereo VCR
Exterior Entertainment Center
(N/A: 40PDT, 40PAQ)
Fully Automatic Digital
Satellite System
Forced Option Flat Screen TV
Upgrade in Living Area and Bedroom
30" Flat Screen TV in Living Area



2004 STANDARDS AND OPTIONS, CONTINUED

INTERIOR

Vintage Oak Cabinetry
Solid Wood Square Raised Panel Cabinet Doors
Low Friction Roller Drawer Guides
Satin Finish Cabinet Hardware
Radius Solid Surface Kitchen Countertop with Stainless Steel Sink and Two Sink Covers
Solid Surface/Tile Backsplash in Kitchen

Tip Out Tray under Kitchen Sink
Waste Basket Storage
Four-Compartment Drawer Organizer
Roll-Out Pantry (N/A with Four-Door Refrigerator)
Ceramic Tile Flooring in Kitchen and Bathroom
Padded Vinyl Ceiling
Nylon Carpeting and Pad in Living Area and Bedroom

Pleated Day/Night Shades with Black Outs in Bedroom
Solid Surface Bathroom Countertop with Integrated Sink
Medicine Cabinet with Shelves
Bathroom Mirror
Towel Bars and Rings in Bath Area
Solid Surface Nightstand Tops
Solid Surface Bedroom Dresser Top
Bedspread with Pillows

OPTIONS

Regal Cherry Cabinetry
Maple Cabinetry
Tile at Entry (Std. on Side Entries)
Laminated Plank Flooring in Kitchen and Bath

FURNITURE

Queen Bed
Fabric Easy Bed Sofa with Drawer – Curbside (36PST, 38PST, 40PST, 40DST, 40PRT, 40PDQ)
Fabric Easy Bed Sofa with Drawer – Driver's Side (N/A: 36PST)
Fabric Barrel Chair(s) – Curbside (38PBDD, 40PBDD, 40PDT)

Fabric Barrel Chair – Driver's Side (36PST)
UltraLeather Euro-recliner with Ottoman Curbside (40PAQ)
Round Dinette Table with Two Freestanding Chairs (40 PAQ)
Legless Dinette Table with Two Freestanding Chairs
Two Folding Dinette Chairs

OPTIONS

Fabric Recliner (N/A: 38PST, 40PST, 40DST, 40PRT, 40PAQ, 40PDQ)
UltraLeather™ Recliner (N/A: 38PST, 40PST, 40DST, 40PRT, 40PAQ, 40PDQ)
Fabric Magic Bed (Driver's Side) (N/A: 36PST)
Fabric Electric Sofa (Driver's Side) (N/A: 36PST)

UltraLeather™ J-Lounge with Drawer (Curbside) (N/A: 38PBDD, 40PDT, 40PAQ)
UltraLeather™ Easy Bed Sofa with Drawer (Curbside) (N/A: 38PBDD, 40PDT, 40PAQ)
Computer Table (Curbside) (40PBDD)
Booth Dinette (N/A: 36PST, 40PDT, 40PAQ)

HEATING, VENTS, AND AIR CONDITIONING

Dual 13.5M BTU Air Conditioner with Ducted Air, Wall Thermostat and Heat Pumps
Attic Fan in Kitchen

Two 25M BTU Electronic Ignition Furnace for Dual Zone Climate Control (40M BTU on 38PBDD and 40PBDD)

In-Floor Ducted Heating System
Electronic AC/Heat Climate Control System

12V Wet Bay Heater

OPTIONS

Attic Fan in Bathroom

ELECTRICAL SYSTEMS AND LIGHTS

50 Amp 120V Distribution Panel and Power Cord
Onan® 6.5 kW LP Generator on Slide-Out Tray
Four 6V Deep Cycle Batteries
Two 12V Heavy Duty Chassis Batteries
Battery Disconnect Switches
1500 Watt Inverter
Porch Light

Side Docking Lights
Pilot and Co-Pilot Map Lights
Power Entry Step with Light
Water Pump Switch
Lights in Outside Storage Compartment
110V Receptacles inside Storage Compartment
Underhood Utility Light

110V/12V/Phone Receptacle in Dash Area
Systems Control Center
Fluorescent Ceiling Lights Throughout
Decorative Dining Light
Cosmetic Vanity Lights in Bathroom
Decorative Wall Lights in Bedroom
Decorative Wall Lights in Living Area

OPTIONS

Energy Management System
Solar Panel
Power Cord Reel
Onan® 7.5 kW Quiet Diesel Generator

WELCOME TO THE FAMILY.

If you choose to participate in our exclusive clubs and rallies, you'll connect with other Monaco owners from across the country. You'll receive a free one-year membership to a chapter of the Monaco Owners Club, and first-time buyers of the Diplomat will receive a free one-year membership to the Family Motor Coaching Association.

*As a Monaco owner, you're entitled to a free subscription to our **LIFESTYLES** magazine, giving you all the latest news on our products, club events and exciting destinations.*





Also, as a new Monaco owner, you're entitled to our comprehensive **OWNER ADVANTAGE PROGRAM**. With this impressive roadside assistance package, Master Certified RVDA Technicians and ASE Certified Technicians are on call 24 hours a day to handle any problems you may experience with your coach. And that's not all. Members of our Owner Advantage Program also receive the following benefits: unlimited emergency roadside service, fuel delivery, tire change, battery jump start, lockout service, trip routing and maps, and much more.

You can access **MONACOCOACH.COM** night or day to take advantage of its many features. The site includes factory tours, a dealer locator function and plenty of information on Monaco products and scheduled club events. Plus, through the site, you may contact us directly at any time.

THE FAMILY ADVANTAGE.

When you purchase a coach from Monaco, you become part of an industry-leading family of companies called Monaco Coach Corporation. What does that mean for you? It means you have access to a wider array of benefits. To begin with, your coach is built by a level of expertise that could only be achieved through the teamwork and combined experience of all our companies. Like, for example, such exclusive innovations as the Roadmaster chassis —



designed specifically for each individual model of our diesel coaches. You also get the benefit of our White Glove factory inspection program, for a higher level of quality assurance and

added peace of mind. And your dealer will be happy to tell you about our other innovative programs, including our Extended Care service agreements. Of course, once you're on the road, you'll have access to our nationwide network of more than 350 service facilities, meaning wherever you travel, you're never far from a friend. Ready to roll? In a 2004 Monaco, the strength of our entire family is behind you every mile of the way.



350
and growing
**Service
Facilities
Nationwide**

WARRANTIES

12 MONTH/24,000 MILE basic limited warranty

5 YEAR/50,000 MILE limited warranty on aluminum or steel frame structure of sidewall, roof, front and rear cap

3 YEAR/36,000 MILE limited warranty on Roadmaster chassis

See owner's manual for complete details.

THE SHINE OF SUCCESS.

It's like a milestone you breeze past without noticing. A turning point where everything changes. Where suddenly, the things you've achieved outnumber the things you've dreamed of. In short, you've arrived. And now that you're here, you can fully appreciate the quality experience of a Monaco coach. As a perfectionist, it's a level of performance and luxury that you recognize instantly. And as a freedom-lover, it's your gateway to endless possibilities. This is the starting point for a whole new journey. Because once you catch a glimpse of yourself in the mirror of a new Monaco, you'll see once and for all just how far you've come.



91320 Industrial Way, Coburg, OR 97408 800 634-0855 606 Nelson's Pkwy., Wakarusa, IN 46573 800 650-7337

Monaco Coach Corporation is traded on the NYSE under the listing MNC. 1203 NPN:BROMDIP