

motorcoach

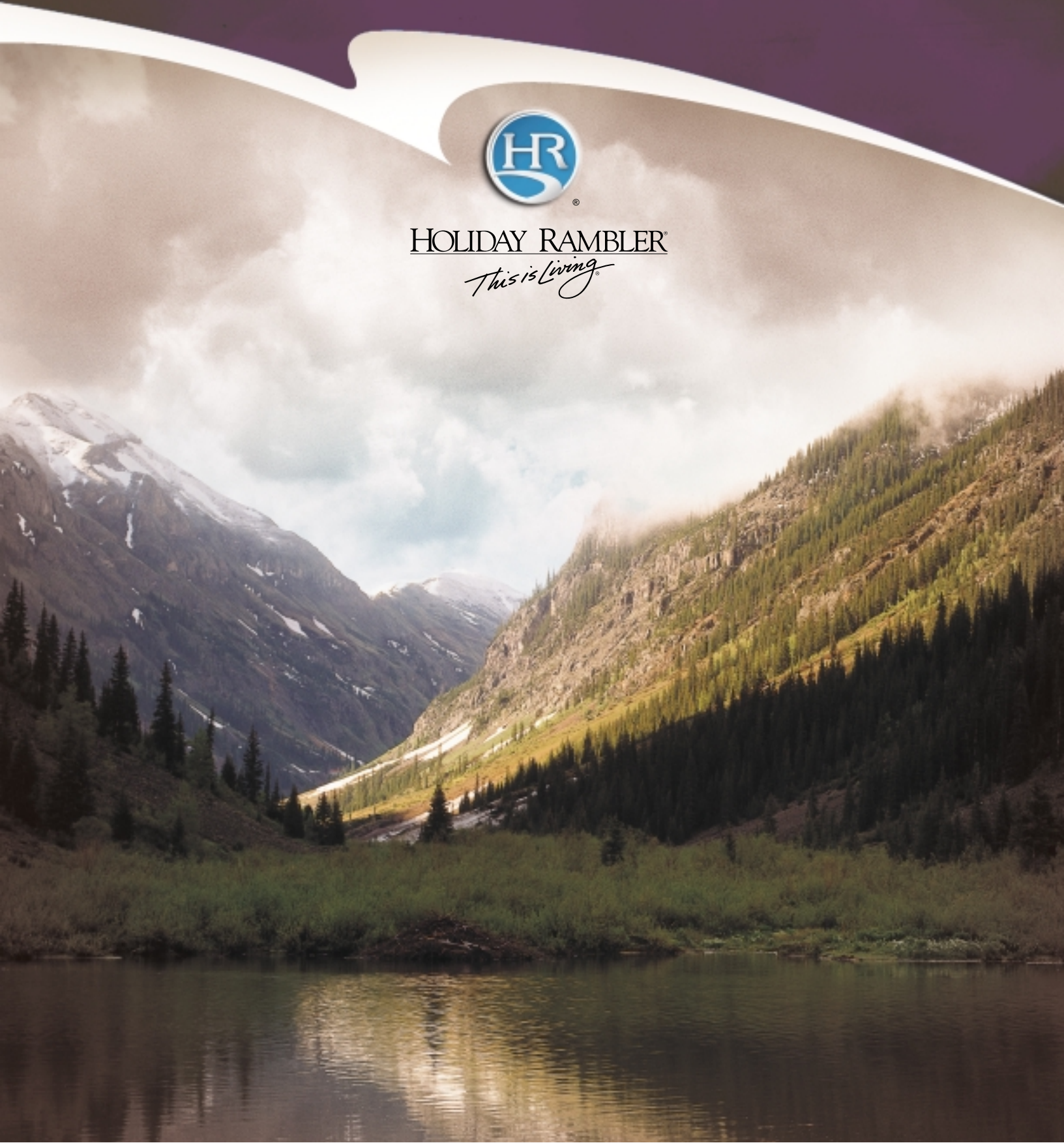
NEPTUNE™ 03

Diesel Prestige



HOLIDAY RAMBLER®

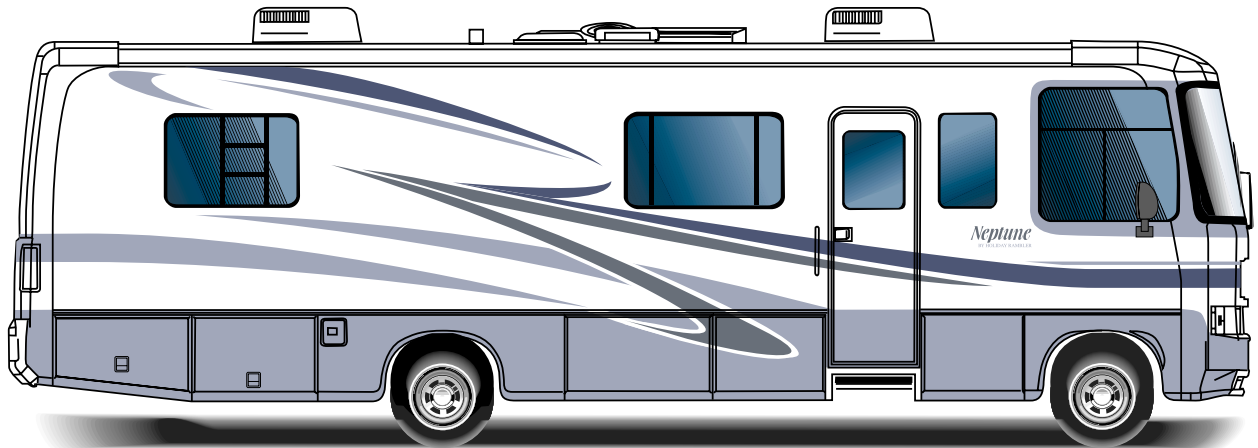
This is Living®



Neptune 2003 Value Package Option

In addition to all of the wonderful standard features Neptune has to offer, this year we're also including a host of options to make your "home away from home" as comfortable as possible. Introducing the new 2003 Value Package from Holiday Rambler.

- Day/night shades with blackout shades in the bedroom
- Stainless steel sink and faucet in kitchen
- Mirror to bedroom back wall (30PBD) and arched mirror to refrigerator wall (NA: 34PDD)
- Corian countertops in the kitchen and bathroom
- Corian sink in the bathroom
- Raised panel cabinet doors throughout
- Separate faucet for filtered water
- Halogen lighting under cabinet overheads
- Painted skirt and mask
- Fluorescent ceiling lights in lieu of pancake ceiling lights
- Beveled mirrors in lieu of border behind kitchen countertop

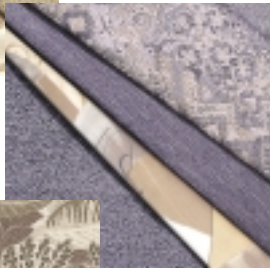


FABRIC CHOICES



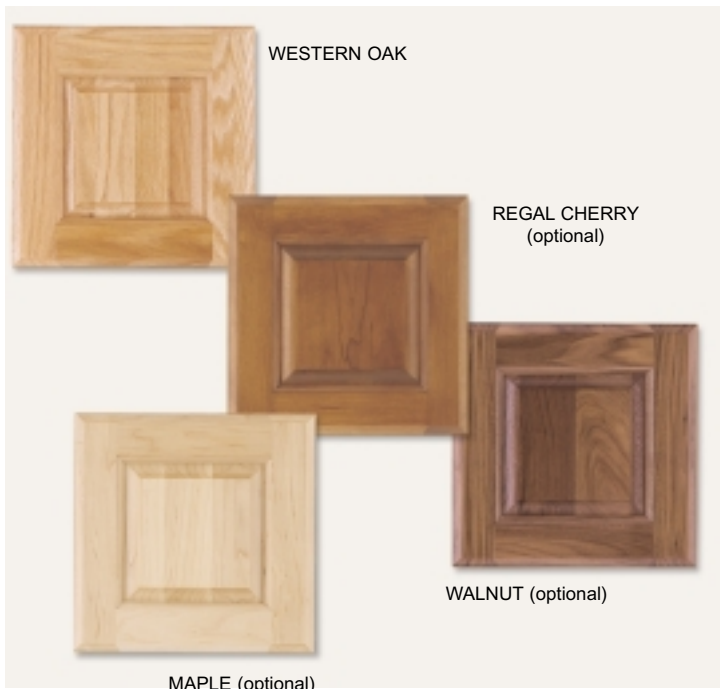
SANDSTONE

DRESDEN BLUE



FOREST FLOOR

WOOD CHOICES





Weight	30PBD	32PBD	34PDD	36PBD
Gross Vehicle Weight Rating (Lbs.)	24,000	24,000	24,000	24,000
Gross Combined Weight Rating (Lbs.)	28,000	28,000	28,000	28,000
Front Gross Axle Weight Rating (Lbs.)	8,500	8,500	8,500	8,500
Rear Gross Axle Weight Rating (Lbs.)	15,500	15,500	15,500	15,500

Measurements	30PBD	32PBD	34PDD	36PBD
Wheelbase	160"	184"	204"	228"
Overall Length	30' 11"	32' 4"	34' 4"	36' 4"
Overall Height	11' 9"	11' 9"	11' 9"	11' 9"
Interior Height	6' 6"	6' 6"	6' 6"	6' 6"
Interior Width	94.5"	94.5"	94.5"	94.5"
Exterior Width	100.5"	100.5"	100.5"	100.5"

Tank Capacity	All Tank Capacities are Approximate. Actual "Usable Capacity" May Vary as a Result of Variances in Installation and Fabrication of the Tanks.			
Water Heater (Gal.)	6	6	6	6
Gray Tank (Gal.)	52	52	52	52
Black Tank (Gal.)	52	52	52	52
Fresh Tank (Gal.)	80	80	80	80
LP Tank (Gal.)*	31	38	38	38
Fuel Tank (Gal.)	75	75	75	75

* Actual Filled LP Capacity is 80% of Listing Due to Safety Shut Off Required on Tank.

NEPTUNE STANDARDS AND OPTIONS

BODY CONSTRUCTION

Standard Features

- umaframe® Superstructure
- Steel Cage Construction
- Coated Aluminum Roof with Fiberglass Insulation
- Smooth Aluminum Exterior Walls
- Front & Rear Molded Fiberglass Cap
- Ampered Grill Door for Transmission Cooler

- Engine Doors Struts
- Angled Fiberglass Engine Cover
- Steel Framed Floor
- Laminated Structurwood™ Flooring
- Air Activated Power Step Well Cover
- Interior Paneling with 3/4" Insulation
- Foam Insulation Underbelly with Luaun Backer
- Power Heated Remote Exterior Mirrors

- Baggage Doors with Integrated Single Handle Latches
- One-Piece Polyethylene Pass-Through Storage Compartment
- Exterior Vinyl Graphics
- Wheel Mud Flaps
- Entry Step Storage
- Rear Ladder

Options

- Smooth Fiberglass Sidewalls

COCKPIT

Standard Features

- Fiberglass Automotive Dash with Carbon Fiber Instrumentation Panel
- CD Player/Radio with Four Speakers

- Multi-Positioned Sunvisors
- Rear Vision System with Audio
- Intermittent Windshield Wipers
- Tilt/Telescoping Steering Wheel
- Cruise Control

- Power Steering
- Electric Automotive Horn
- Drink Holder
- Soft Touch Vinyl Pilot & Co-Pilot Seats

Options

- Six-Way Power Pilot Seat
- Power Sunvisors

APPLIANCES AND ACCESSORIES

Standard Features

- Large Double-Door Refrigerator
- High-Output 3-Burner Cooktop
- Space-Saver Microwave
- 5" Stereo Color TV with Remote in Living Area

- TV Antenna with Booster with TV Jacks
- Pre-Wire for Bedroom TV
- VCR Prep and Video Control Box with Dual Hook-Ups for DSS & Cable
- Cable TV Hook-Up and Telephone Jacks

Options

- Large Double-Door Refrigerator with Ice Maker
- High Output Three-Burner Range with Oven
- Convection Microwave
- 19" Stereo Color TV with Remote in Bedroom

Options

- VCR
- DVD Player
- Washer/Dryer Prep (N/A: 30PBD, 32PBD)
- Combination Washer/Dryer (N/A: 30PBD, 32PBD)
- Home Theater System

NEPTUNE STANDARDS AND OPTIONS

INTERIOR

Standard Features

Western Oak Cabinetry
Solid Wood Square Raised Panel Doors on Overhead Cabinets
Solid Panel Hardwood Doors on Base Cabinets
Electrified Overhead Storage Doors and Positive Catches on All Other Doors
Low Friction Roller Drawer Guides
Brushed Brass Finished Cabinet Hardware
Laminated Kitchen Countertop with Backsplash and Fiberglass Sink with Two Sink Covers

Kitchen Counter Top Extension (30PBD, 32PBD, 34PBD)
Laminate Bathroom Countertop with Laminated Edge
Kitchen Pantry with Adjustable Shelves (N/A: 30PBD, 32PBD)
Arched Back Booth Dinette with Drawers
Laminated Dinette & Nightstand Countertops with Laminated Edge
Padded Vinyl Ceiling
Medicine Cabinet with Shelves
Bathroom Mirror
Towel Bars and Towel Rings Bathroom

Queen Bed with Shirt Closets and Nightstands
Bedsprad and Pillows
Nylon Carpeting and Pad in Living Area and Bedroom
Linoleum Flooring in Bath
Laminated Plank Flooring in Kitchen
Mini Blinds Throughout
Fabric Barrel Chair (N/A: 30PBD)
Fabric Jack Knife Sofa

Options

Value Package (See Details on Page 4)
Woods: Regal Cherry, Maple or Walnut
Decors: Sandstone, Dresden Blue, Forest Floor
Fabric Recliner Chair (N/A: 30PBD)
Soft Touch Vinyl Recliner Chair (N/A: 30PBD)
Soft Touch Vinyl Jack Knife Sofa
Fabric Magic Bed (N/A: 30PBD, 32PBD)
Fabric Electric Sofa
Raised Refrigerator Panel Inserts

ELECTRICAL SYSTEMS AND LIGHTS

Standard Features

100 Amp 120V/240V Distribution Panel and Power Cord
100 Amp Electronic 12V Power Converter
Onan® 6.5 KW LP Generator
Two 6V Batteries (House Batteries)

Battery Disconnect Switch at Front Door
12V and 110V Outlets in Cockpit Area
Porch Light
Power Entry Steps with Light
Lights in Outside Storage Compartment
120V Receptacles in Outside Storage Compartment

Computer Hook-Up with Phone Jack in Dinette Area
Systems Control Center
12V Incandescent Ceiling Lights Throughout
Cosmetic Vanity Lights in Bathroom
Decorative Dinette Light

Options

Onan® 7.5 KW QD Diesel Generator
Energy Management System
1500-Watt Inverter with Two Additional Batteries

PLUMBING AND LP SYSTEMS

Standard Features

Domestic Water System and Water Pump
10-Gallon LP Gas/Electric Water Heater with Electronic Ignition (DSI)
Water Heater By-Pass Valve

Winterization Valving System
Toilet with Sprayer
One-Piece Fiberglass Shower
Glass Shower Door with Brass Frame
No-Fuss Flush Black Holding Tank Rinsing System

Insulated Systems Compartment with Easy Access to Hook-Up
Gravity Water Fill

Options

10-Gallon LP Gas/Electric Water Heater with Electronic Ignition (DSI) (N/A: 30PBD)
Bath Tub (30PBD, 36PBD)

HEATING, VENTS AND AIR CONDITIONING

Standard Features

One 13.5M BTU Roof Air Conditioner with Ducted Air and Wall Digital Thermostat Control (N/A: 36PBD)

One 13.5M BTU and One 11.0M BTU Roof Air Conditioner with Ducted Air and Wall Digital Thermostat Control (36PBD)
35M BTU Electronic Ignition Furnace

Electronic AC/Heat Climate Control System
In-Floor Ducting Heating System
12V Roof Vent in Bath and Kitchen
12V Heater in Wet Bay

Options

Two A/Cs (13.5M BTU and 11.0M BTU) (Standard on 36PBD)
12V Attic Fan in Kitchen

WINDOWS, DOORS AND AWNINGS

Standard Features

Flush Mount Radius Single Pane Safety Glass Dark Tinted Slider Windows

Front Entry Door with Removable Screen
Interior and Exterior Grab Handles
Tinted Skylight in Bathroom with Protecta Glaze

Acrylic Patio Awning
Topper Slide-Out Awnings

Options

Front Door Awning
Dual Pane Windows

SAFETY

Standard Features

Fire Extinguisher
Deadbolt Lock on Entrance Door

120V GFI Protected Circuit (Kitchen, Bathroom, Exterior)
LP Gas Detector
Smoke Detector

Carbon Monoxide Detector
Pilot and Co-Pilot Three-Point Seat Belts (Lap and Shoulder)

Third Brake Safety Light
Egress Window

CHASSIS/ENGINE/SUSPENSION

Standard Features

Loadmaster Rail Chassis
Cummins® ISB 275 HP Low Torque Engine with Allison®
2000 MH Transmission
Torque: 600 lbs./ft. Max. Net at 1,600 RPM

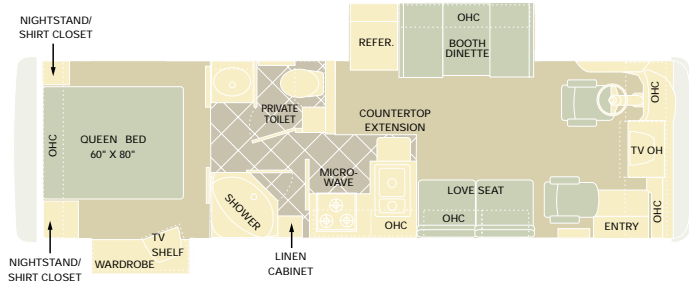
Cubic Inch Displacement: 359"/ 5.9L
Rear Axle Ratio: 4.88:1
160 Amp Alternator
Dual Fuel Fill
Radial Tires: 255/70R/22.5
Stainless Steel Wheel Simulators
4 Gas Shock Absorbers
4 Air Springs
Hydraulic Anti-Lock Braking System

Auto Slack Adjusters
Transmission Temperature Gauge
Air Cleaner Restriction Indicator
Manual Leveling System
Fuel and Water Separator
4,000 lb. Hitch Receiver with Six-Point Connector
Undercoating

Options

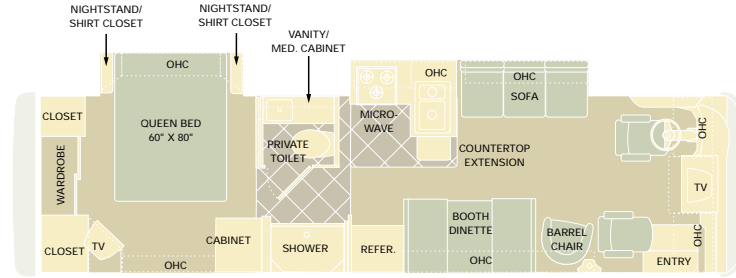
Cummins® ISB 300 HP Low Torque Engine with Allison®
2000 MH Transmission
Hydraulic Levelers

NEPTUNE FLOORPLANS



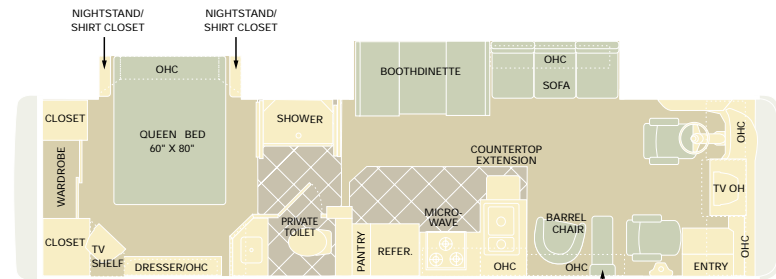
MODEL | 30PBD

- 30PBD Options Include:
 Bath Tub
 Soft Touch Vinyl Jack Knife Sofa



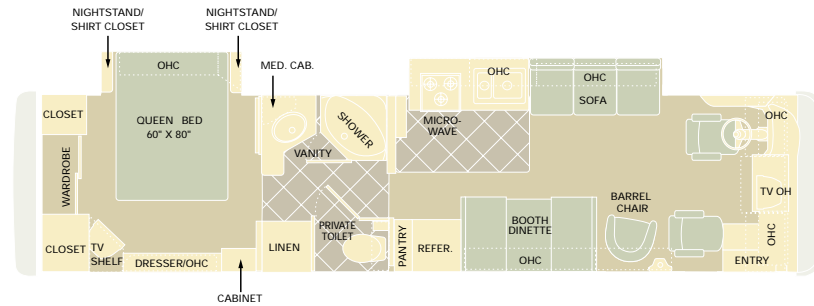
MODEL | 32PBD

- 32PBD Options Include:
 Fabric Electric Sofa
 Fabric Magic Bed Sofa
 Fabric or Soft Touch Vinyl Recliner
 Soft Touch Vinyl Jack Knife Sofa



MODEL | 34PDD

- 34PDD Options Include:
 Fabric Electric Sofa
 Fabric Magic Bed Sofa
 Fabric or Soft Touch Vinyl Recliner
 Soft Touch Vinyl Jack Knife Sofa



MODEL | 36PBD

- 36PBD Options Include:
 Bath Tub
 Fabric Electric Sofa
 Fabric Magic Bed Sofa
 Fabric or Soft Touch Vinyl Recliner
 Soft Touch Vinyl Jack Knife Sofa

OPTIONAL ITEMS:

Bath Tub	Fabric Electric Sofa	Fabric Magic Bed Sofa	Fabric or Soft Touch Vinyl Recliner	Soft Touch Vinyl Jack Knife Sofa

CARPET
 LINOLEUM/PLANK



Thanks for taking a look at the 2003 Neptune. At Holiday Rambler, we understand that great experiences on the road start with a great RV. Whatever your passions and wherever your destinations, our coaches are designed to lead you to the adventure around every corner — to let you meet the Great Outdoors on your terms, at whatever pace you choose. So here's to the freedom of the open road. And here's to a new world of possibilities — in a 2003 Neptune from Holiday Rambler.

Due to the large variety of options and floorplan arrangements available to our customers, actual weights for each unit can differ significantly. Holiday Rambler provides a weight sticker on each unit we produce which includes that unit's tank capacities and approximate weight. Consult your local Holiday Rambler dealer for unit availability and further information.

The information printed in this brochure reflects product design, fabrication, and component parts at the date of printing. The manufacturer reserves the right, at any time, to make changes in product design or material or component specifications as its sole option, without notice. This includes the substitution of components of a different brand or trade name, which will result in comparable performance. All information printed in this brochure is subject to change after the date of printing. Some features shown or mentioned in this brochure are optional and may only be available in selected floorplans. Photographs may show props or decorations that are not standard equipment on Holiday Rambler models. Holiday Rambler, the HR logo and its design, are registered trademarks. All other products and company names are trademarks and/or registered trademarks of their respective holders.

While the color of the motorhome's exterior and the interior fabrics depicted in this sales brochure are fair and reasonable depictions, the colors depicted may not be an exact match of the actual colors because of the variances in photo-processing and variances caused by inserting the photographs within the sales brochure. Due to product improvements, changes during the model year and/or transcription errors that may occur, information represented within this brochure may not be accurate at the time of your purchase. If certain information is significant to your purchasing decision, please confirm the information with your dealer prior to submitting your order.

Your towed vehicle should be equipped with auxiliary brakes if the weight of the towed vehicle exceeds 1,000 lbs.