





Fleetwood RV and Freightliner Custom Chassis have teamed up to bring you the ultimate in luxury, power and performance. Introducing the newly re-engineered Freedom Bridge® foundation.

Freedom Bridge foundation combines the unrivaled strength and storage capacity of Fleetwood RV's exclusive modular design with the high-performance innovation of a Freightliner chassis—all backed by the nation's largest service support network. The new Freedom Bridge® brings performance and peace of mind together, perfectly.

*Freedom Bridge XCM is the foundation for Discovery model.*



DriveTech rolls together FCCC's latest innovations—like the OptiView all-digital LCD dash display and FCCC's all-new ergonomic steering wheel and column-mounted controls— into one comfortable, easy-to-use driver console.



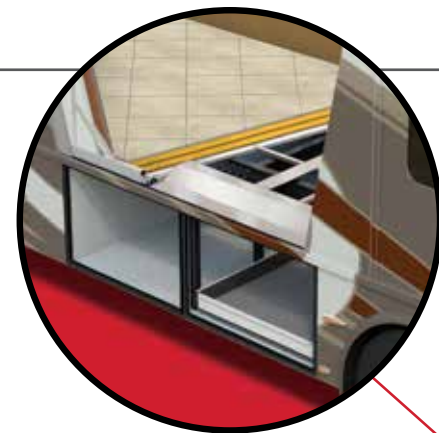
**INTRODUCING DRIVETECH**—the most advanced display and control system in the RV industry. DriveTech is the first RV driving system to prioritize safety by putting every command in one easy-to-reach location. The all-new ergonomic steering wheel and column-mounted controls are paired with OptiView's all-digital gauge display to create a more automotive-like feel and set the industry standard for luxury RV driving. And it's only from Freightliner Custom Chassis.

**PRIORITIZING DRIVER SAFETY**  
A recent study reported that 80% of collisions and 65% of near collisions involved some form of driver distraction, often from using electronic devices while driving. DriveTech prioritizes driver safety by streamlining and simplifying controls to help drivers focus their full attention on maneuvering and piloting the coach.

**CONNECTING WITH RV DRIVER EXPECTATIONS**  
The world is changing. By 2021, more than 90% of cars sold will be connected—equipped with Internet access and a wireless network to share data with devices both inside and outside the vehicle. DriveTech updates the RV driver's station to align with that of the automotive industry, delivering the luxury experience modern drivers expect.



Rated up to 24,000 lbs., V-Ride allows for more luxury amenities, additional cargo capacity and superior roll stability.



**Increased Storage:** Oversized pass-through storage re-engineered with slide rails integrated into the floor, creating more storage space and easier access.



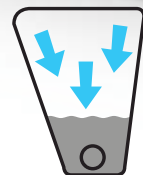
OptiView is the RV industry's first LED instrument cluster, featuring bright, clear graphics, colors and menus. Bluetooth® connectivity and on-demand operation add convenience and control.



DriveTech's ergonomically-designed steering wheel and easy-to-reach, column-mounted controls turn piloting your RV into a driver-friendly automotive experience.



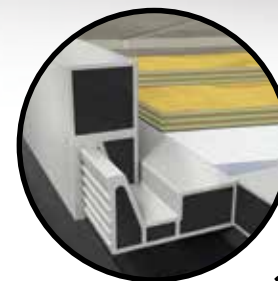
**Wedge Tank Design:** Wedge-shaped holding tanks ensure thorough drainage of black and grey water.



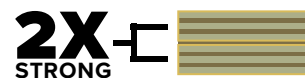
### RV OWNERCARE

Limited one-year/15,000-mile coach warranty and three-year/45,000-mile structural warranty, whichever occurs first, and it is fully transferable for the first 12 months. RV OWNERCARE is one of the RV industry's most comprehensive programs and includes systems, appliances, components and construction, with no deductible and no service charge.

Chassis Warranty provided by Freightliner Custom Chassis Corporation®



**Maximized Flooring Strength:** Double-thick flooring effectively deadens exterior noise and increases durability.



### ADDITIONAL FEATURES

**A Premium SACHS® Shocks** increase comfort, safety and dependability. **B I-Beam Construction** achieves a torsion rating that is 30% higher than the competition. **C Dual-Side Fuel Fills** provide high-flow access to the 100-gallon fuel tank from either side of the RV. **D Impressive Towing Capacity** with integrated receiver hitch ratings of 10,000 lbs. and 15,000 lbs., offering a wide range of towing capabilities.\* **E Central Protective Raceway** houses air, hydraulic and electrical lines while providing easy access. **F Michelin® Tires w/Polished Aluminum Wheels** give you on-the-road performance and let you arrive in style.



**Huckbolts:** Aerospace-grade, vibration-resistant fasteners for unrivaled strength and reliability.





### FIND JUST WHAT YOU'RE LOOKING FOR.

2021 marks the 25th anniversary of Discovery. It holds the ranking as one of the best-selling RVs ever made. From the inside out and from components to creature comforts, it's easy to see why so many owners stand behind this brand. We start with the Freedom Bridge custom chassis, V-Ride suspension, DriveTech steering system and OptiView instrument cluster. With those innovations, you'll experience a smoother ride and easier handling, coupled with greater power.

Discovery's front and rear caps have been re-designed for a more modern look. Whirlpool® residential appliances and fireplaces are standard, as are heated porcelain floors in the front of the coach. Cool down with two 15K BTU roof air conditioners, or add on an optional third unit for even faster comfort. A King® universal satellite system equips your three TVs—including a 48-inch exterior TV—and a 100W solar panel offers renewable energy.

The more you learn about it, the more Discovery reveals why it's an industry icon.



Photo© Matt Idler

**DISCOVERY 38F**

Shown in Ridgeland Taupe Decor with Heritage Cabinetry





**DISCOVERY 38F**  
Shown in Ridgeland Taupe Decor with Heritage Cabinetry



**1** Flat Screen LED TV on a swing arm so there isn't a bad viewing seat in the motorhome and an electric fireplace

**2** Intricate stitching and eye catching furniture designs to give a residential feeling

**3** Discovery 38F offers a full-size pull-out pantry with drawers for all the essentials and more located in the galley area

**4** Fully-adjustable Roadwire® driver and passenger seating precisely customize your seat for the best and most comfortable ride with reclining back, swivel and 6-way power controls

**5** Optional Hide-A-Loft™ drop down queen bed with industry-leading headroom and it's own LED TV for additional guests

**6** Optional facing-dinette available only on the Discovery 38F situated by a large window to take in the view while dining

**7** Thoughtful storage throughout using transforming furniture to make your motorhome functional and practical



**1** Discovery 38F floorplan offers built-in headboard storage and additional shelving, USBs located in nightstands

**2** Full wall master bedroom dresser and storage with a LED TV, cedar lined wardrobe

**3** Washer and dryer is standard on all Discovery floorplans, shown is the stackable unit

**4** 43" Flat screen LED TV located in the Discovery 38F master bedroom

**5** Fiberglass shower with surround, glass door and skylight in the master bathroom

**6** Discovery 38F boasts dual sinks and large vanity area

**7** Large bathroom vanity with tons of storage, stylish tiled backsplash

**8** Pocket doors are stylish and practical giving a very open feeling to every floorplan and offers versatility while maintaining the clean, sleek look of a room.



**DISCOVERY 38F**  
Shown in Ridgeland Taupe Decor with Heritage Cabinetry





**DISCOVERY 36Q**

Shown in Enclave Decor with Greystone Cabinetry



1



2



3



Adaptable Patent Pending 4



Adaptable Patent Pending 5



Adaptable Patent Pending 6



7

1 Discovery 36Q offers a private master suite including a king sized bed and a complete flat floor

2 Stylish island floorplan adds countertop and storage space just where needed and is a pivot point between cooking, cleaning and food prep zones

3 Located in the island pull-up recepts with USB

4 Available on the Discovery 36Q Adaptable versatile seating that showcases the panoramic window view. This patent pending table converts from a breakfast bar, desk working station area, table for two or table for four

5 Discovery 36Q Adaptable offers the perfect office space to allow you to take work on the road

6 Discovery 36Q Adaptable a larger seating arrangement for family dinners or entertaining

7 All Discovery's come standard with push button start



1



2



3



4



5

1 Residential living with all the comforts of home with refrigerator/freezer, ice and water in the door, microwave and you can even add an optional dishwasher for your dream kitchen

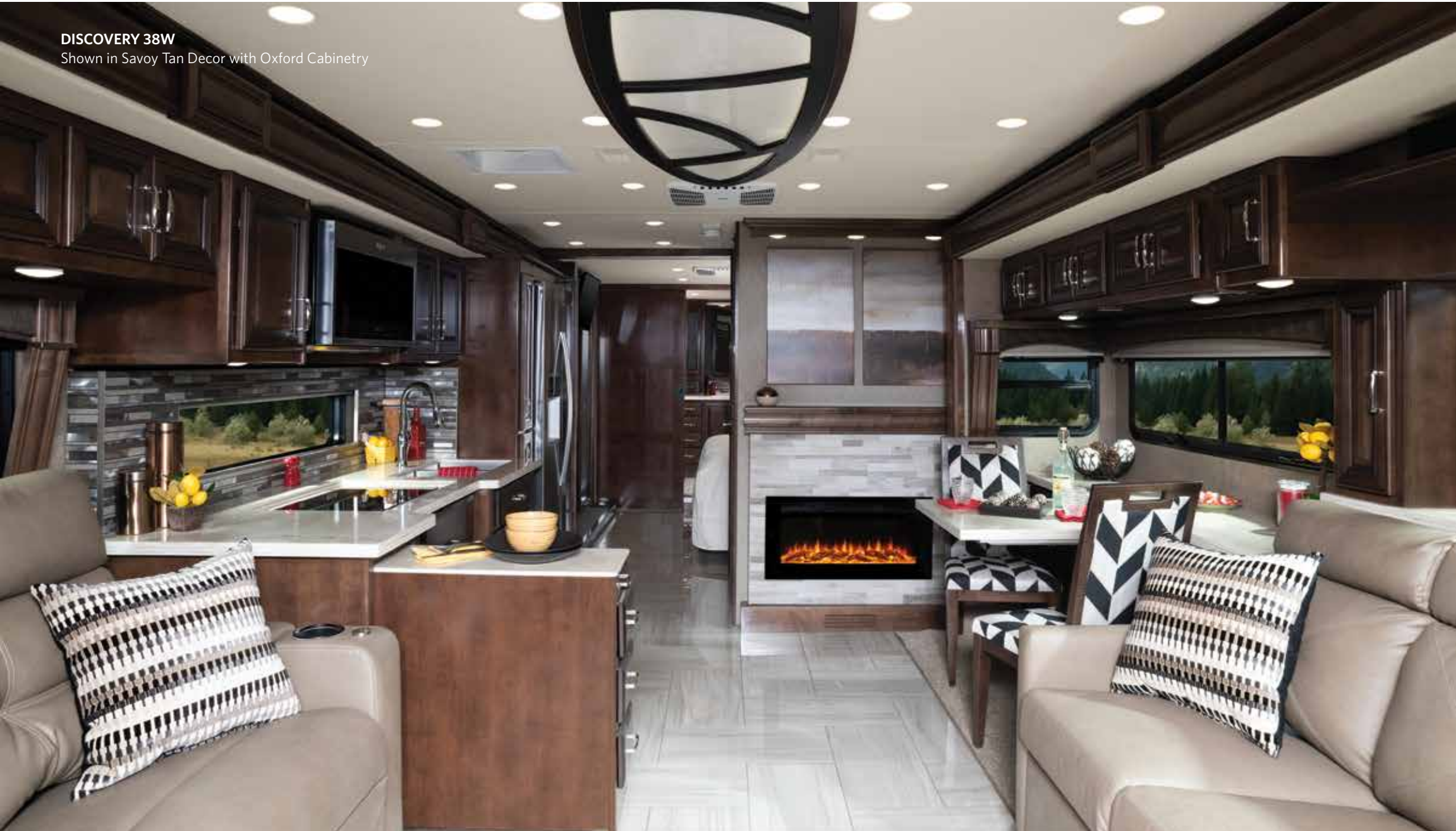
2 Motion power lounge is a great option on the Discovery 36Q, 38K, 38N and 38W floorplans, front floor heating is standard

3 Dual vanities and private lavy, tile backsplash and tons of storage

4 Discovery 38W boasts a full-length wardrobe with mirrors and tons of storage with a chest of drawers and a LED TV

5 King sized bed with adjustable head, USBs in nightstands, individual reading lights in bedroom overhead hardwood cabinetry are just a few of the amenities

**DISCOVERY 38W**  
Shown in Savoy Tan Decor with Oxford Cabinetry





**DISCOVERY 38F**  
Shown in Ridgeland Taupe Decor with Cappuccino Cabinetry



1



2



3



4



5



6



7

1 Free-standing dinette and credenza offers a dining area or a work space plus tons of storage, comes with two additional folding chairs if need to seat four **TRUE???**

2 Discovery 38F offers a oversized galley area for meal prep and entertaining, shown with optional dishwasher

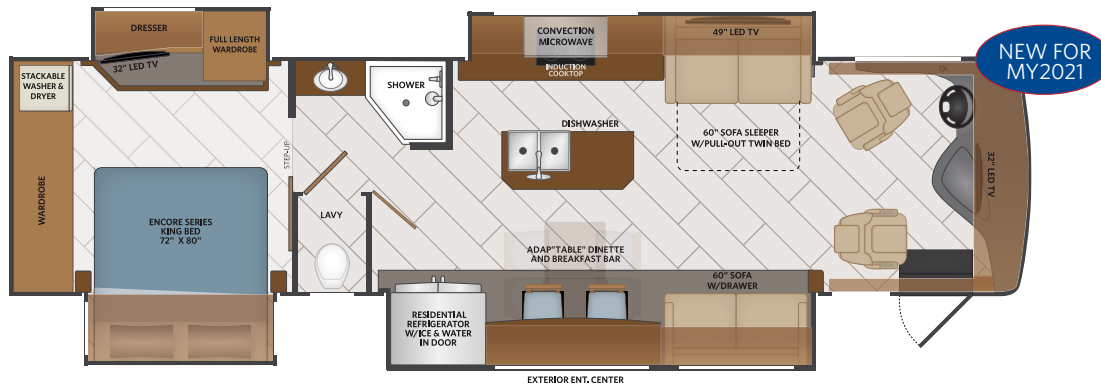
3 Intricate double stitched first-class designed furniture which allows you to relax in style and gives a modern, luxurious look

4 King sized bed with adjustable head, USBs in nightstands, individual reading lights in bedroom overhead hardwood cabinetry are just a few of the amenities

5 Additional storage in the headboard and a bonus shelf to keep items close in reach

6 Electric fireplace, front floor heat and central vacuum are all standard on the Discovery model

7 Residential single-handed faucet with pull-out sprayer makes clean up easy, stainless steel sink and large kitchen window



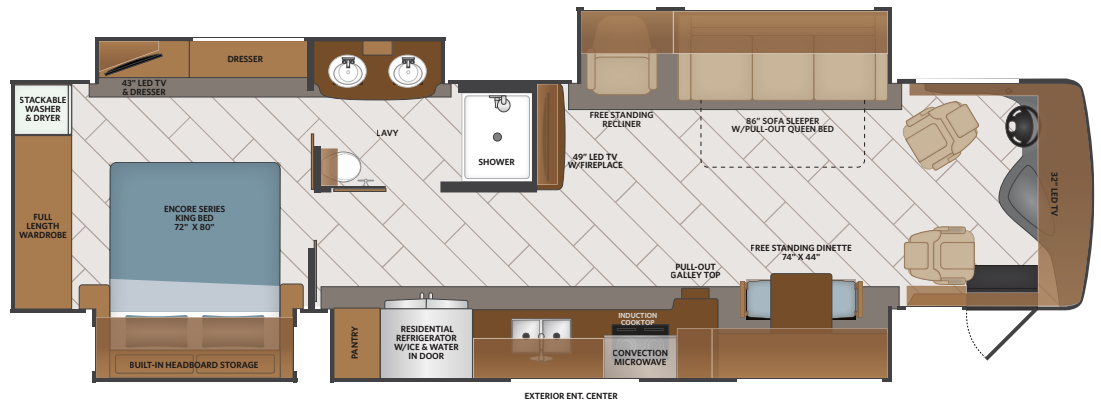
NEW FOR MY2021

**36Q**

Options: 099, 107, 209, 217, 237, 563

**TOP FLOORPLAN FEATURES**

- Sleeps up to 6
- Residential Galley w/Functional Island
- Adapt "table" Dinette (Patent Pending) Versatile Seating which Showcases the Panoramic Window View or allows Additional Table Seating by Converting to a Dinette Table
- Private Master Suite
- Jack and Jill Lavy with Private Water Closet

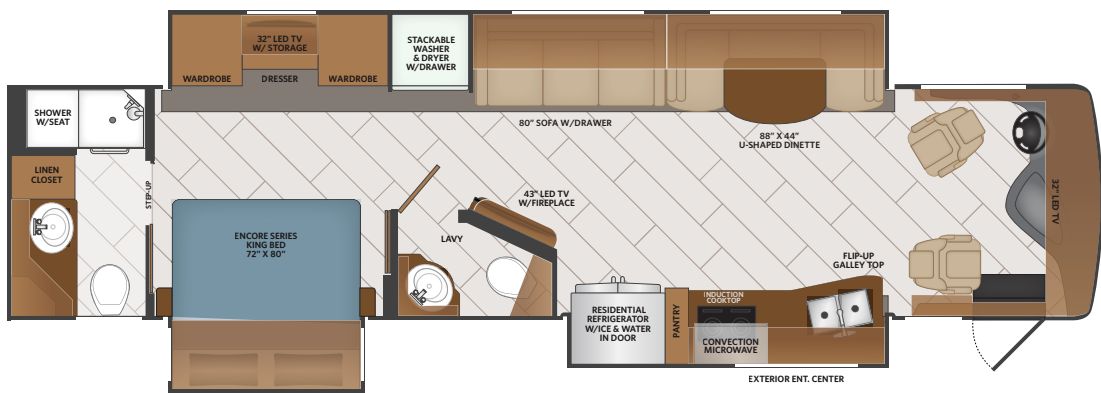


**38F**

Options: 099, 107, 217, 237, 563, 830

**TOP FLOORPLAN FEATURES**

- Sleeps up to 7
- Spacious Galley and Living Area
- Free Standing Recliner
- Dual Bowl Lavy Vanity
- Large Built-in Headboard Storage
- Articulating King Bed



**38K**

Options: 099, 107, 209, 217, 237, 563, 833

**TOP FLOORPLAN FEATURES**

- Sleeps up to 5
- Open Living Area
- U-benched Dinette
- Sofa with Storage Drawer
- Porcelain Tile Floor
- Fiberglass Shower w/Seat & Skylight

## 38N

Options: 099, 107, 209, 217, 237, 563, 809, 833

### TOP FLOORPLAN FEATURES

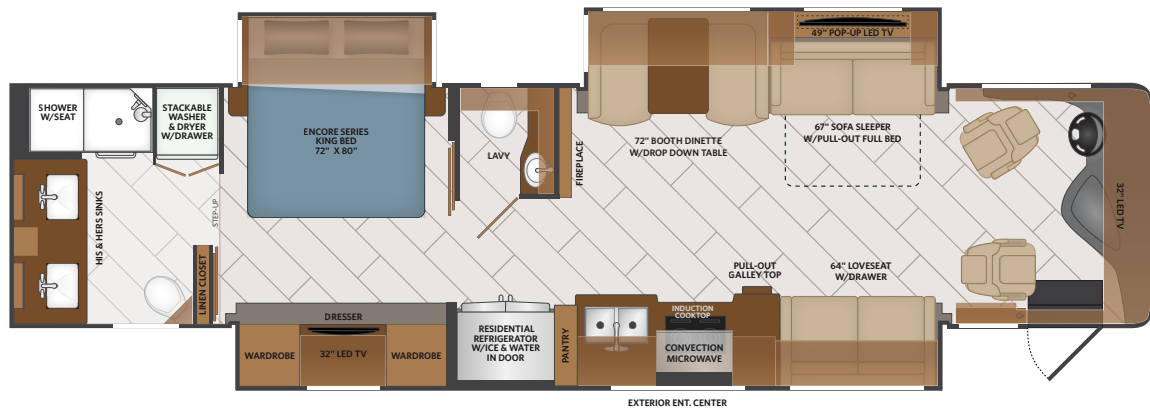
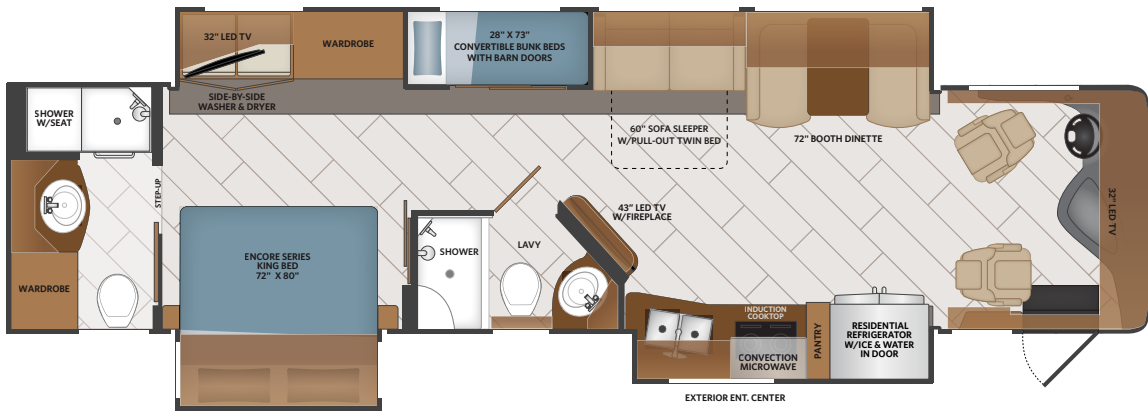
- Sleeps up to 8
- Convertible Bunk Beds & Open Living Area
- Shadow Box at Large Galley Window
- Solid Surface Galley and Lavy Tops
- Firefly Multiplex Wiring w/Color Touchscreen
- Solar Panel 100W

## 38W

Options: 099, 107, 209, 217, 237, 345, 563, 833

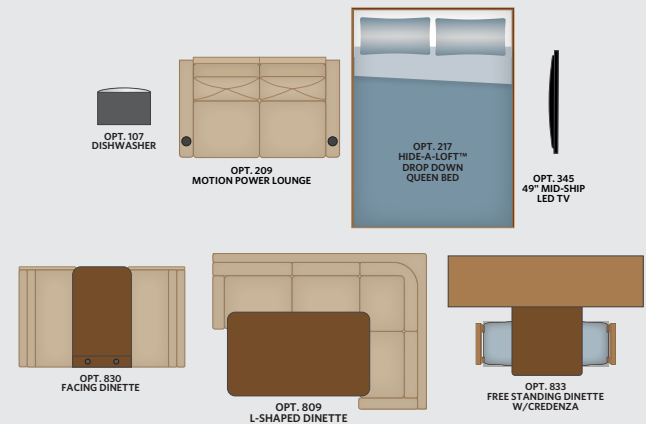
### TOP FLOORPLAN FEATURES

- Sleeps up to 7
- Large Master Suite
- Sofa w/Sleeper
- 49" Pop-up LED TV, Living Room
- Dual Wardrobes and Dresser, Bedroom
- Large Residential-like, Private Lavy with His and Her Dual Sinks
- Pantry



### DISCOVERY OPTIONS

099	Satellite Delete	345	Mid-ship LED TV
107	Dishwasher	563	Technology Package
209	Motion Power Lounge	809	L-shaped Dinette
217	Hide-A-Loft™ Drop Down Queen Bed	830	Facing Dinette
237	Third Roof AC	833	Free Standing Dinette w/Credenza

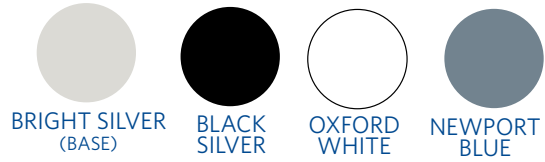




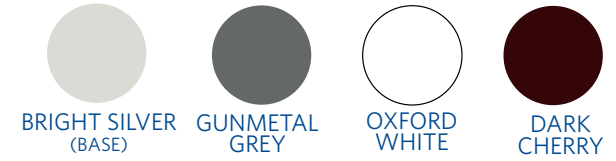
EXTERIOR GRAPHICS — Premium Four Color, Full Body Paint



CRYSTALLINE



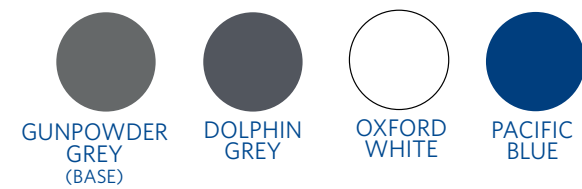
ECHO



MAGNETIC GREY

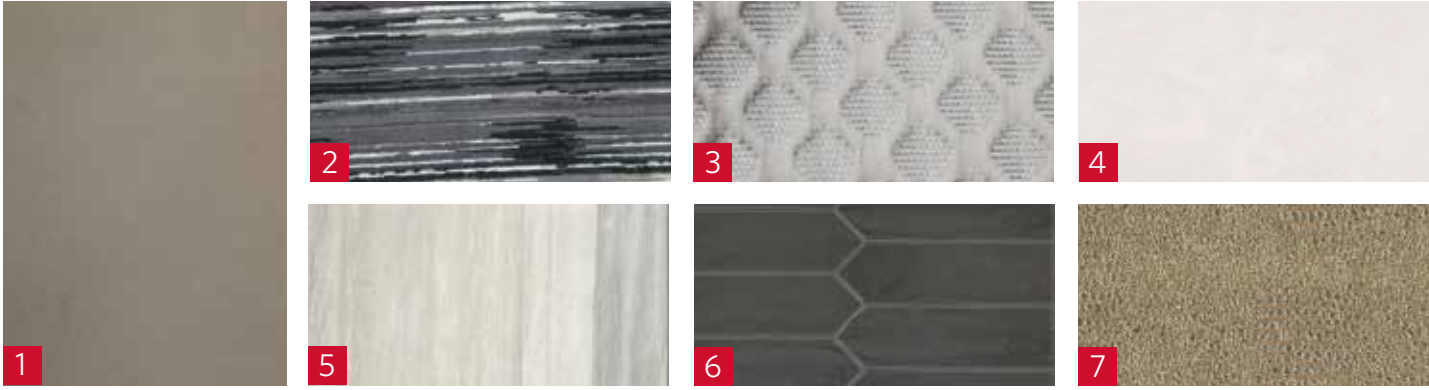


VINTAGE

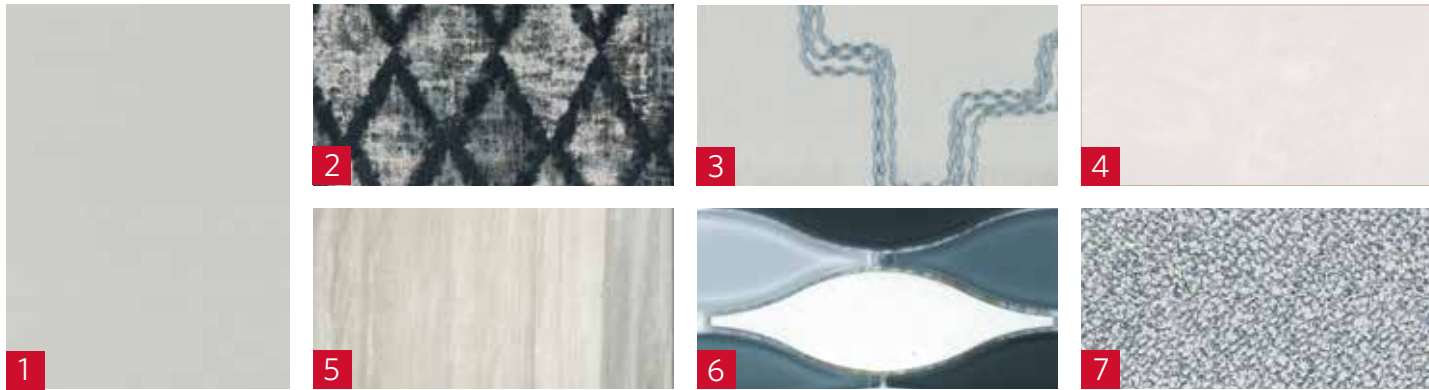


INTERIOR DECOR

CELESTIAL GRAY



ENCLAVE

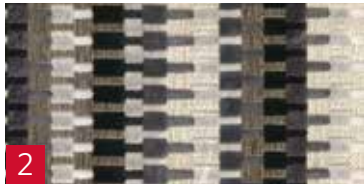


RIDGELAND TAUPE



- 1 SOFA
- 2 LIVING ACCENT
- 3 BEDSPREAD
- 4 COUNTERTOP
- 5 FLOORING
- 6 BACKSPLASH
- 7 VALANCE

SAVOY TAN



- |   |               |   |            |   |            |   |         |
|---|---------------|---|------------|---|------------|---|---------|
| 1 | SOFA          | 3 | BEDSPREAD  | 5 | FLOORING   | 7 | VALANCE |
| 2 | LIVING ACCENT | 4 | COUNTERTOP | 6 | BACKSPLASH |   |         |



CAPPUCCINO



GREYSTONE



HERITAGE



OXFORD

**DISCOVERY**  
**INTERIOR DESIGNER RECOMMENDS:**

- Celestial Grey Decor with Heritage or Greystone Cabinetry
- Enclave Decor with Heritage or Greystone Cabinetry
- Ridgeland Taupe Decor with Heritage or Greystone Cabinetry
- Savoy Tan Decor with Oxford or Greystone Cabinetry

*Create a customized look that reflects your personal style.*

# DISCOVERY

EXTERIOR	36Q	38F	38K	38N	38W
4-Color Premier Full-Body Paint	S	S	S	S	S
Fiberglass Wheel Well Skirts	S	S	S	S	S
TPO Roof: Thermoplastic Polyolefin	S	S	S	S	S
Awning: Electric Patio Awning w/ LED Lighting and Wind Sensor Retract	S	S	S	S	S
Power Entrance Awning w/LED Lighting	S	S	S	S	S
Slideout Awning Toppers Above All Slideouts, Dometic	S	S	S	S	S
Entry Door: Radius Trimmed Door w/Blk Interior, Blk Screen Door, Rotary Latch, Deadbolt Lock,/Window	S	S	S	S	S
Acrylic Lighted Grab Handle at Entry Door	S	S	S	S	S
Side-Swing Aluminum Bus-Style Baggage Doors w/Chrome Handles	S	S	S	S	S
LED Patio Lights	S	S	S	S	S
Porch Light w/Interior Switch	S	S	S	S	S
Automatic Hydraulic Leveling Jacks	S	S	S	S	S
LED Clearance and Marker Lighting at Front, Side and Rear	S	S	S	S	S
Exterior Service Station w/ Water Pump Switch, Exterior Shower, Black Tank Flush, City Water Hook-Up, Towel Holder, Drainage Valves, Water Heater, and Bypass Valve	S	S	S	S	S
Full-Coach Water Filtration System	S	S	S	S	S
Exterior Park Cable and Satellite Hook-Up	S	S	S	S	S
7-Way Round Tow Connection	S	S	S	S	S
Rear Ladder: Brushed-Aluminum Color	S	S	S	S	S
Front and Rear Mudflaps	S	S	S	S	S
Rear Underhood Utility Light	S	S	S	S	S
Antenna: Unidirectional KING® Controls Jack Antenna	S	S	S	S	S
Basement Storage LED Lighting	S	S	S	S	S
Heated Holding Tank Compartment	S	S	S	S	S
Basement Pass-Through Storage	S	S	S	S	S
KING® Universal Stationary Satellite	S	S	S	S	S
Undercarriage LED Lights	S	S	S	S	S
Full-Bay Slide Trays: 1st Bay Single 90"	S	S	S	S	S
Roof Vent Rain Covers	S	S	S	S	S
48" Exterior Entertainment Center	S	S	S	S	S
3rd Roof A/C	O	O	O	O	O
Satellite Delete	O	O	O	O	O
CAB EXTERIOR	36Q	38F	38K	38N	38W
One-Piece Front Fiberglass Cap	S	S	S	S	S
One-Piece Rear Cap	S	S	S	S	S

One-Piece Generator Access	S	S	S	S	S
Automotive-Style One-Piece Windshield	S	S	S	S	S
Daytime Running Lights	S	S	S	S	S
Driver and Passenger Tinted Slider Windows	S	S	S	S	S
Top-Mounted Automotive-Style Windshield Wiper System	S	S	S	S	S
Remote Power and Heated Mirrors w/Turn Signals and Side Cameras, Chrome	S	S	S	S	S
Lower Front Protective Mask	S	S	S	S	S
Generator Slideout	S	S	S	S	S
CAB INTERIOR	36Q	38F	38K	38N	38W
Dash Inserts: Driver Instrument Panels	S	S	S	S	S
Black Instrument Gauges w/Electronic Information Center	S	S	S	S	S
Push Button Start	S	S	S	S	S
High-Output Dash Air Conditioning and Heat	S	S	S	S	S
Air Suspension Deflation System	S	S	S	S	S
Electronic Cruise Control	S	S	S	S	S
Windshield Wipers w/Delay	S	S	S	S	S
Keyless Entry w/Remotes	S	S	S	S	S
Switch for Power and Heated Chrome Mirrors	S	S	S	S	S
Switch for Utility Service Compartment	S	S	S	S	S
Driver Console w/Lower Storage Bin	S	S	S	S	S
Power Locks w/Key FOB Control	S	S	S	S	S
7" Back-Up Monitor Color	S	S	S	S	S
SiriusXM® Satellite Radio Ready (Req. Subscription)	S	S	S	S	S
10.2" Magnadyne® Radio Touch Screen w/AM/FM/CD/DVD/Bluetooth®/Navigation/App Store/WiFi	S	S	S	S	S
Driver Chair: Leather w/Reclining Back, Swivel, and 6-Way Power Controls	S	S	S	S	S
Passenger Chair: Leather w/Reclining Back, Swivel, 6-Way Power Controls, and Footrest	S	S	S	S	S
Seatbelts: 3-Point Driver/Passenger w/Adjustable Straps	S	S	S	S	S
12V and USB Accessory Ports	S	S	S	S	S
110V AC Outlet in Dash and Passenger Area	S	S	S	S	S
Automotive-Style Wrap-Around Dash	S	S	S	S	S
Passenger Armrest w/Solid-Surface Top	S	S	S	S	S
Front Power Roller Shades/Blinds	S	S	S	S	S
Driver/Passenger Manual Roller Shades/Blinds	S	S	S	S	S
Radio Switch Main/Auxiliary Power in Dash	S	S	S	S	S
Additional Battery Disconnect Switch in Dash	S	S	S	S	S

Momentary Battery Booster Switch: Connecting Chassis and House Batteries	S	S	S	S	S
Map Lights	S	S	S	S	S
Driver/Passenger Overhead Storage Cabinetry	S	S	S	S	S
Air Horns	S	S	S	S	S
Automatic Leveling Jacks w/Touchpad Controls	S	S	S	S	S
Power Drop-Down Hide-A-Loft Bunk w/Mattress	O	O	O	O	O
INTERIOR	36Q	38F	38K	38N	38W
86" Sleeper Sofa w/Queen-Sized Bed	—	S	—	—	—
80" Loveseat w/Storage	—	—	S	—	—
60" Loveseat w/Storage	S	—	—	—	—
60" Sleeper Sofa w/Twin-Sized Bed	S	—	—	S	—
67" Sleeper Sofa w/Full-Sized Bed	—	—	—	—	S
64" Loveseat w/Drawer	—	—	—	—	S
80" Power Motion Lounger	—	—	O	—	—
60" Power Motion Lounger	O	—	—	O	—
64" Power Motion Lounger	—	—	—	—	O
Chair: Recliner w/Swivel and Glide	—	S	—	—	—
Facing Dinette Booth	—	O	—	S	S
L-Shape Dinette	—	—	—	O	—
Free-Standing Dinette w/Credenza	—	S	O	O	O
U-Shape Dinette	—	—	S	—	—
Adap"table" Dinette and Breakfast Bar (Patent Pending)	S	—	—	—	—
Electric Fireplace	—	S	S	S	S
Interior Flat Soft-Touch Vinyl Ceiling	S	S	S	S	S
Matte-Finish Porcelain Tile Flooring Throughout	S	S	S	S	S
Floor Heat in Living Area	S	S	S	S	S
Full-Extension Drawer Guides Throughout w/Latches	S	S	S	S	S
Hidden Hinges Throughout	S	S	S	S	S
Hardwood Throughout	S	S	S	S	S
Hardwood Ceiling Feature Trim w/Lighting	S	S	S	S	S
Coordinating Valance w/Lambrequins	S	S	S	S	S
Front, Driver/Passenger Manual Day/Night Roller Shades, Blk/Blk	S	S	S	S	S
Manual Day/Night Roller Shades Throughout, Blk	S	S	S	S	S
Safe-T-Vue™ Camera System	S	S	S	S	S
110V and USB Ports Throughout	S	S	S	S	S

Energy-Efficient LED 3" Puck Flush-Mounted Ceiling and Accent Wall Lighting	S	S	S	S	S
Washer and Dryer	S	S	S	S	S
Accent Rope Lighting	S	S	S	S	S
<b>INTERIOR ENTRY</b>	<b>36Q</b>	<b>38F</b>	<b>38K</b>	<b>38N</b>	<b>38W</b>
Power Entry Step Cover	S	S	S	S	S
Solid-Surface Entry Step w/ LED Accent Lighting	S	S	S	S	S
Battery Disconnect at Passenger Cabinet	S	S	S	S	S
Metal Interior Grab Handle at Entry Door	S	S	S	S	S
Entry Door Manual Roller Shades and Blinds	S	S	S	S	S
Lighted Step Well	S	S	S	S	S
Automatic Entrance Steps	S	S	S	S	S
<b>KITCHEN</b>	<b>36Q</b>	<b>38F</b>	<b>38K</b>	<b>38N</b>	<b>38W</b>
Refrigerator: 21 cu.ft. Side-by-Side Refrigerator w/ Exterior Ice/Water Dispenser, 36" w Depth	S	S	S	S	S
2-Burner High-Output Induction Electric Cooktop	S	S	S	S	S
Stainless Steel Over-the-Range 1000W Convection Microwave	S	S	S	S	S
Polished Solid-Surface Galley Countertop w/Lighting	S	S	S	S	S
Shadow Box Glass Tile Backsplash w/ Window/Shade	S	S	S	S	S
Deep Stainless Steel Sink	S	S	S	S	S
Island Oasis w/Polished Solid-Surface Top, Hardwood Trims, and Stainless Steel Sink	S	—	—	—	—
Polished Solid-Surface Sink Covers	S	S	S	S	S
Residential Single-Handled Faucet w/Pull-Out Sprayer	S	S	S	S	S
Adjustable Shelves Throughout Kitchen	S	S	S	S	S
Full-Extension Drawer Guides w/Latches	S	S	S	S	S
Fantastic® Power Vent w/Wall Switch	S	S	S	S	S
Pop-up Receptacles	S	—	—	—	—
Wastebasket	S	S	S	S	S
Pantry w/Hardwood Finished Fronts	S	S	S	S	S
Dishwasher	O	O	O	O	O
<b>BEDROOM OR BUNK AREA</b>	<b>36Q</b>	<b>38F</b>	<b>38K</b>	<b>38N</b>	<b>38W</b>
King-Sized Dreameasy® Serenity Memory Foam Mattress w/Adjustable Head	S	S	S	S	S
28" x 73" Bunk Beds w/5" Foam Mattress	—	—	—	S	—
Designer Bedspread, Pillow Shams, and Pillows	S	S	S	S	S
Headboard	S	S	S	S	S
Coordinating Fabric Window Treatments/ Lambrequins	S	S	S	S	S
Remote Generator Start Switch	S	S	S	S	S

Surf(x)® Bedroom Tops	S	S	S	S	S
Hardwood Raised-Panel Doors	S	S	S	S	S
Hardwood Cabinet Wardrobe Doors w/Mirrors	S	S	S	S	S
Cedar-Lined Rear Wardrobe Closet	S	S	S	S	S
Dual Rear Wardrobe w/Hinges Rods	—	—	S	S	S
Full Rear Wardrobe w/Hinges Rod	S	S	—	—	—
Bunk Bed Barn Door	—	—	—	S	—
USB in Nightstands	S	S	S	S	S
Individual Reading Lights in Bedroom Overhead Cabinets	S	S	S	S	S
<b>BATHROOM</b>	<b>36Q</b>	<b>38F</b>	<b>38K</b>	<b>38N</b>	<b>38W</b>
Polished Solid-Surface Bathroom Countertop	S	S	S	S	S
Polished Solid-Surface Bathroom Shelf	—	—	S	S	—
Feature Lighting at Bathroom Top	S	S	S	S	S
Tile Backsplash	S	S	S	S	S
Gemstone Undermount Bathroom Sink	S	S	S	S	S
Residential Double-Handled Faucet, Chrome	S	S	S	S	S
Deluxe Hardwood Medicine Cabinet w/Mirror	S	S	S	S	S
Hardwood Raised-Panel Doors	S	S	S	S	S
Fiberglass Colored Shower Pan and Surround	S	S	S	S	S
Glass Shower Door	S	S	S	S	S
Shower Skylight	S	S	S	S	S
Chrome Shower Head w/On/Off, Sliding Adjustable Bar, Soap Dish, and Matching Single-Valve Faucet	S	S	S	S	S
Porcelain Macerator Foot-Flush Toilet w/ Water Saver	S	S	S	S	S
Porcelain Foot-flush Toilet w/Water Saver	—	—	S	S	—
Fan-Tastic® Power Vent w/Wall Switch	S	S	S	S	S
Hardwood Window Treatment	S	S	S	S	S
Manual Night Roller Shade, Black	S	S	S	S	S
Accessories: Towel Rings/Toilet Paper Holder	S	S	S	S	S
<b>ENTERTAINMENT</b>	<b>36Q</b>	<b>38F</b>	<b>38K</b>	<b>38N</b>	<b>38W</b>
LG® 32" Flat Screen LED TV (Bedroom)	S	—	S	S	S
LG® 43" Flat Screen LED TV (Bedroom)	—	S	—	—	—
LG® 43" Flat Screen LED TV (Living Area)	—	—	S	S	—
LG® 49" Flat Screen LED TV (Living Area)	S	S	—	—	—
49" Pop-Up TV (Living Area)	—	—	—	—	S
Soundbar w/Bluetooth® Sound System (Living Area)	S	S	S	S	S

Blu-Ray® Player w/Remote	S	S	S	S	S
LG® 32" Flat Screen LED TV (Front Overhead)	S	S	S	S	S
Exterior Entertainment: 48" TV and Soundbar w/Bluetooth®	S	S	S	S	S
Two (2) LED TV/DVD Combo Units Bunk Bed	—	—	—	S	—
LG® 43" Flat Screen LED TV (Living Area)	—	—	—	—	O
<b>ELECTRIC AND UTILITIES</b>	<b>36Q</b>	<b>38F</b>	<b>38K</b>	<b>38N</b>	<b>38W</b>
A/C: (2) Roof-Mounted High-Efficiency Ducted 15,000 BTU w/Chill Grill/Rear Heat Pump	S	S	S	S	S
Aqua Hot® 400D	S	S	S	S	S
Firefly Multiplex Wiring	S	S	S	S	S
Service: 50-amp, 120V Service Panel	S	S	S	S	S
Converter: 60-amp Power Converter w/ Precision Circuits	S	S	S	S	S
Inverter: Single 2000W Pure Sine w/Remote and Magnum	S	S	S	S	S
Energy Management System (EMS) w/Soft Start and Precision Circuits	S	S	S	S	S
Neutral Loss Protection	S	S	S	S	S
Generator: 8kW Onan Quiet Diesel	S	S	S	S	S
Generator Automatic Changeover	S	S	S	S	S
Automatic Generator Start	S	S	S	S	S
Batteries: (4) 6V Deep Cycle House Batteries	S	S	S	S	S
Water Pump: 12V 3GPM High-Capacity SHURflo® Water Pump	S	S	S	S	S
Water Purification System (Whole Coach)	S	S	S	S	S
Black Water Tank Flush	S	S	S	S	S
Gravity Water Fill DS/RS	S	S	S	S	S
Cable TV and Satellite Hook-up	S	S	S	S	S
Toilet Tank San-T-Flush™ System	S	S	S	S	S
Touch Sensor Tank Monitoring/Battery Readout	S	S	S	S	S
Carbon Monoxide/Smoke Detectors, Fire Extinguisher	S	S	S	S	S
Exterior GFCI Receptacle in Exterior Storage	S	S	S	S	S
Central Vacuum System	S	S	S	S	S
Surge Guard Transfer Switch	S	S	S	S	S
Power Cord Reel	S	S	S	S	S
100W Solar Panel	S	S	S	S	S
3rd Roof A/C	O	O	O	O	O
Technology Package: WiFiRanger™, Cell Booster, 265W Solar Panel, and MobileEye Collision Mitigation	O	O	O	O	O

## DISCOVERY SPECIFICATIONS

CHASSIS	36Q	38F	38K	38N	38W
Wheelbase (inches)	263"	263"	252"	252"	263"
Front GAWR (lbs)	12,400	12,400	12,400	12,400	12,400
Rear GAWR (lbs)	21,000	21,000	21,000	21,000	21,000
GCWR (lbs)	43,400	43,400	43,400	43,400	43,400
Hitch Rating Weight (lbs)	10,000	10,000	10,000	10,000	10,000
Tongue Weight (lbs)	1,000	1,000	1,000	1,000	1,000
Fuel Capacity (gal)	100	100	100	100	100

DIMENSIONS AND CAPACITIES	36Q	38F	38K	38N	38W
Overall Length (inches)	37' 3"	40' 11"	40' 0"	40' 0"	40' 11"
Overall Height (suspension inflated)	12' 10"	12' 10"	12' 10"	12' 10"	12' 10"
Overall Width (maximum)	102"	102"	102"	102"	102"
Interior Height (maximum)	84"	84"	84"	84"	84"
Interior Width (maximum)	96"	96"	96"	96"	96"
Patio Awning Width (ft.)	14' 0"	18' 0"	10' 8"	18' 0"	18' 0"
Interior Storage (cu. ft.)	147	166	140	148	132
Exterior Storage (cu. ft.)	88	142	127	127	142
Fresh Water Holding Tank (gal)	105	105	105	105	105
Grey Water Holding Tank (gal)	75	75	75	75	75
Black Water Holding Tank (gal)	50	50	50	50	50
Aqua-Hot 400D	S	S	S	S	S



### FREEDOM BRIDGE® CHASSIS

Model: Freightliner® XCM Series

Engine: Cummins ISB 6.7L

Transmission: Allison® 3,000 MH 6-Speed w/Electronic Shifter

Alternator: Delcom Remy 160 Amp

Torque: 800 lb.-ft. @ 1,800 RPM

Horsepower: 360HP

#### DISCLAIMERS

1. GVWR (Gross Vehicle Weight Rating) is the maximum permissible weight of this fully loaded motorhome. The GVWR is equal to or greater than the sum of the (UVW) unloaded vehicle weight plus the (OCCC) occupant cargo-carrying capacity.
2. GAWR (Gross Axle Weight Rating) is the maximum permissible loaded weight a specific axle is designed to carry.
3. GCWR (Gross Combined Weight Rating) is the value specified by the motor home manufacturer as the maximum allowable loaded weight of this motorhome with its towed vehicle. Towing and braking capacities may be different. Refer to Fleetwood and chassis manufacturer's manuals for complete information.
4. Length measured from front bumper to rear bumper (excludes accessories).
5. Excludes safety equipment and awnings.
6. Motorhomes feature a body width over 96" which will restrict your access to certain roads. Before purchasing, you should research any state and/or province road laws which may affect your usage.
7. Tank manufacturer's listed water capacity (WC). Actual propane capacity is 80% of water listing as required by the safety code.

† The chassis manufacturer recommends the installation of a supplemental brake control system to activate the brakes on the vehicle or trailer you are towing. Hitch receiver ratings expressed are maximum for the hitch receiver installed and may require the purchase of additional equipment that is dependent on the weight of the towed load. Consult with hitch receiver manufacturer for further information.

\* UVW and OCCC are found on the label containing the federal certification tag in each RV.

\*\*\* All 2021 REV Recreation Group motorhomes include a limited one year/15,000-mile coach warranty and three-year/45,000-mile structural warranty, whichever occurs first, and is fully transferable for the first 12 months.

#### FLEETWOOD MOTORHOME ASSOCIATION

As a Fleetwood RV owner, you're invited to become a member of the Fleetwood Motorhome Association (FMA). Becoming a member is the perfect way to meet other Fleetwood owners who love to travel across America and share in the RV lifestyle. Visit the FMA website at [www.fma4fun.org](http://www.fma4fun.org) to learn more and join the fun.

#### CONTACT US

To locate a dealer near you, visit our website at [www.fleetwoodrv.com](http://www.fleetwoodrv.com) or call 1-800-322-8216. We can also be contacted at Fleetwood RV Customer Relations, P.O. Box 1007, Decatur, IN 46733.

**IMPORTANT—PLEASE READ:** Product information, photography and illustrations included in this publication were as accurate as possible at the time of printing. For further product information and changes, please visit our website at [www.fleetwoodrv.com](http://www.fleetwoodrv.com) or contact your local Fleetwood RV dealer. Prices, materials, design and specifications are subject to change without notice. All weights, fuel, liquid capacities and dimensions are approximate. Fleetwood RV has designed its recreational vehicles to provide a variety of uses for its customers. Each vehicle features optimal seating, sleeping, storage and fluid capacities. The user is responsible for selecting the proper combination of loads (i.e., occupants, equipment, fluids, cargo, etc.) to ensure that the vehicle's capacities are not exceeded.



DISCOVERY OUTSTANDING STANDARDS AND OPTIONS



**AQUA-HOT®**  
Experience even, quiet heating and on-demand hot water with the Aqua-Hot 400D system.



**HIDE-A-LOFT™ DROP DOWN BED**  
Invite more guests on your road trip without compromising space featuring industry-leading headroom and up to 500 lb. capacity.



**MOTION POWER LOUNGE**  
Upgrade your sofa seating to a motion power lounger. Relax in style with modern, luxurious furniture from APEX custom furniture designed exclusively for Fleetwood RV.



**DISCOVERY COMES STANDARD**  
Top-mounted automotive-style windshield wiper system, remote power and heated mirrors w/turn signals and side cameras all chrome are standard amenities on a Discovery. Option up for third Roof A/C.



**GENEROUS EXTERIOR STORAGE**  
Take along more of what you need and bring home more of what you want, with deep, easy-to-clean pass-through compartments.



**FLOOR HEAT IN THE LIVING AREA**  
Keep cozy during the cooler mornings and nights with standard floor heat in the living area is standard.



**48-INCH EXTERIOR LED TV & SOUNDBAR**  
This feature adds an extra outdoor TV room with a 48-inch LED TV and exterior soundbar with Bluetooth®.



**TOUCH PAD ELECTRONICS PANEL**  
Easily operate all your RV's systems and accessories with this modern LCD touchscreen control panel. You can even control from your phone with the app.



**FULLY-ADJUSTABLE ROADWIRE DRIVER AND PASSENGER SEAT**  
Rule the road from your cockpit with recline, swivel and six-way power controls.

ADAP"TABLE" DINETTE AND BREAKFAST BAR



1 Discovery 36Q Breakfast Bar/Table for Two



2 Discovery 36Q Work Station



3 Discovery 36Q Table for Four

Available on the Discovery 36Q versatile seating which showcases the panoramic window view. This patent pending table converts from a breakfast bar, desk working station area, table for two or table for four.



#### RESIDENTIAL APPLIANCES GALORE

Whirlpool® 21 cu. ft. side-by-side refrigerator w/ exterior water & ice in-door dispenser, stainless steel over-the-range 1000W convection microwave and two burner high-output induction cooktop. A deep stainless steel sink with residential single-handled faucet and pull-out sprayer and polished solid-surface sink covers. Galley cabinetry has pull-out cupboard for additional workspace. Dishwasher is an optional upgrade. Central vacuum system comes standard on all Discovery floorplans.

#### MASTER BEDROOM SUITE

Masterbed room is standard with a King Size Dream Easy Serenity memory foam mattress with adjustable head. Additional USBs located in the nightstands. The 38F floorplan has additional built-in headboard storage. All Discovery rear wardrobes are cedar-lined leaving a natural aroma that helps keep moths away and clothes smelling fresh.

#### FREE-STANDING ROCKER/RECLINER

The Discovery 38F is standard with a free-standing rocker/recliner adding comfort and style. Kick back and relax while getting toasty by the electric fireplace. You can pull the easy recline release on the side and extend the leg rest to take a nap or watch a movie.



#### POP-UP RECEPTACLES

Discovery 36Q is equipped with pop-up receptacles which include additional USB ports.



#### WASHER AND DRYER

All floorplans come standard with a washer and dryer.



#### GALLEY ISLAND

Discovery 36Q is equipped with an stylish island cabinet with deep stainless steel sink and polished solid surface top and covers. Optional dishwasher is located in the island along with a pop-up receptacle.



#### TECHNOLOGY PACKAGE INCLUDES:

- WiFiRanger™ Sky4 ProPack w/LTE
- WeBoost Cell Booster
- MobileEye Collision Mitigation
- 265 Watt Solar Panel



YOUR LOCAL DEALER

# Explore Your World Like Never Before



About REV Group, Inc.



REV Group® (REVG) is a leading designer, manufacturer, and distributor of specialty vehicles and related aftermarket parts and services. We serve a diversified customer base, primarily in the United States, through three segments: Fire & Emergency, Commercial, and Recreation. We provide customized vehicle solutions for applications, including essential needs for public services (ambulances, fire apparatus, school buses, and transit buses), commercial infrastructure (terminal trucks and industrial sweepers) and consumer leisure (recreational vehicles). Our diverse portfolio is made up of well-established principal vehicle brands, including many of the most recognizable names within their industry. Several of our brands pioneered their specialty vehicle product categories and date back more than 50 years. REV Group trades on the NYSE under the symbol REVG. Investors-REVG



IMPORTANT—PLEASE READ: Product information, photography and illustrations included in this publication were as accurate as possible at the time of printing. For further product information and changes, please visit our website at [www.fleetwoodrv.com](http://www.fleetwoodrv.com) or contact your local Fleetwood RV dealer. Prices, materials, design and specifications are subject to change without notice. All weights, fuel, liquid capacities and dimensions are approximate. Fleetwood RV has designed its recreational vehicles to provide a variety of uses for its customers. Each vehicle features optimal seating, sleeping, storage and fluid capacities. The user is responsible for selecting the proper combination of loads (i.e., occupants, equipment, fluids, cargo, etc.) to ensure that the vehicle's capacities are not exceeded.

**FleetwoodRV.com**

©2020 REV Group, Inc. Printed in the USA. 11/20. Model Year 2021, First Edition.

Part #: L93-0020-21



## OUR VERY OWN FLEETWOOD RV MOTORHOME SERVICE CENTERS

At Fleetwood RV, we strive to deliver peace-of-mind at every turn. Our devotion to customer service starts with our trusted dealer network and spans to our own staff of motorhome service professionals at REV Recreation Group's regional technical centers. The motorhome service centers are strategically located throughout the United States to provide you convenient service wherever the road takes you.

Below, you'll find the closest motorhome service center, as well as a list of the other centers. Please visit [www.fleetwoodrv.com/motorhome-service-centers](http://www.fleetwoodrv.com/motorhome-service-centers) to schedule a Service Appointment.

### East Coast

REV RV SERVICE & REPAIR  
800-509-3417

### West Coast

REV RV SERVICE & REPAIR  
877-466-6226

## ROADSIDE ASSISTANCE. ANYWHERE. ANYTIME.

24/7 CUSTOMER SUPPORT FOR:

- FUEL
- BATTERY
- LOCKSMITH
- TOWING
- SLIDE-OUT ISSUES
- AND MUCH MORE!

**1-855-268-0414**



One-year of REV Assist is free with the purchase of any new 2021 Fleetwood. You may extend your coverage after the first year at [www.revgroup.com/rev-assist](http://www.revgroup.com/rev-assist).