

 **MERIDIAN**

2007





 **SMARTSPACE**  
WEB

### NOW IS THE TIME FOR DIESEL LUXURY AND PERFORMANCE.

The power, performance and comfort of a full-featured diesel pusher are yours in the 2007 Itasca Meridian®. It all starts with a Freightliner® chassis boasting a 350-hp Caterpillar® diesel engine and a six-speed Allison® transmission. Step inside and you'll see how our SmartSpace™ design

philosophy maximizes functionality and convenience while offering more user-friendly features. Choose from three open, generous floorplans with flat-floor slideouts and power-locking mechanisms, three fabric options and three wood choices to create the Meridian of your dreams.



## FEELS LIKE HOME

Enjoy a relaxing evening at the movies in the comfort of your Meridian. The entertainment center boasts a 24" flat-face TV and a Home Theater Sound System with DVD player. Further enhancements include an amplified antenna, video selection system and a 600-watt inverter that lets you enjoy TV or movies without shoreline or generator power. A 2,000-watt inverter/charger is also available.

Stitchcraft custom furniture provides a number of seating options. Depending on your floorplan, it may include the Rest Easy® lounge, plush Euro Chair with ottoman, banquette and/or a hoop-base lounge chair that can be placed anywhere when the coach is parked. All are available in UltraLeather™ for an added touch of luxury.

Day/night pleated shades provide multiple levels of light and privacy. They cover the dual-glazed, thermo-insulated windows, which are flush-mounted for added style and thermal efficiency.



**SATELLITE TV** Add the available in-motion satellite dish and it automatically locks on and tracks digital satellite feeds at the push of a button. It's compatible with all receivers and service providers.\*

\*Satellite TV requires a subscription. See your dealer for details.



**WEB REST EASY®** This multi-position lounge changes from a sofa to a recliner with ottoman to a comfortable bed, all at the touch of a button.



**AVAILABLE EURO CHAIR** Relax in this stylish UltraLeather recliner (NA 39K).

**WEB** Select a Key Feature

The **WEB** icon designates a Winnebago Industries Key Feature. For further in-depth information and photos, use this drop-down menu or click on the 'Key Features' page at [winnebagoind.com](http://winnebagoind.com).





39K

## MAKE ROOM

The bedroom slideout creates plenty of room for a walk-around queen bed. It also provides plenty of space for storage, such as the mirrored wardrobe and underbed compartment (NA 39K).

Enjoy your favorite late-night show before bed on the 20" LCD TV (flat-screen on the 36G). You can also add the rear stereo system, featuring a CD/DVD player, AM/FM radio, alarm clock and an input for an MP3 player.

In the bathroom, a skylight above the shower lends a spacious feel while highlighting upscale features like the residential-height toilet and Moen® chrome faucet. The shower features a Moen Posi-Temp® valve that maintains a consistent shower temperature even if water pressure fluctuates. An available shower package provides a fold-down shower seat and a handheld showerhead. Extra storage can be found in the linen closet and the hamper on the 34H.

**BEDROOM** You'll relax in peaceful comfort night after night in the spacious bedroom. The beautiful cabinetry provides abundant storage, including a cedar-lined wardrobe.



**LINEN CLOSET** The linen closet provides plenty of storage for extra linens, towels and bath accessories.



## WASHER/DRYER

Select the available washer/dryer and enjoy the convenience of never needing to stop at the Laundromat.



**WEB SLEEP NUMBER® BED**  
The available Sleep Number Vantage Point bed by Select Comfort™ lets you adjust the firmness of each side of the bed independently to your Sleep Number – the Key to a Perfect Night's Sleep.™



## LOOK WHAT'S COOKING

Prepare even the most extravagant meals in this full-featured galley. The 30" microwave/convection oven with range fan comes with sensor cook. Upgrade to the four-door refrigerator/freezer with icemaker for additional cold storage. Solid-surface countertops and sink covers create a workspace large enough for everything on your menu. The galley faucet doubles as a pullout sprayer for cleanups or rinsing fresh produce.

Our SmartSpace design philosophy adds value to the galley with features like full-extension drawer slides and a pullout pantry with adjustable shelves. Dining options include a classic dining table and chairs or the BenchMark™ full comfort dinette with innerspring cushions for extra support. A multi-function dining table is also offered, providing seating for up to four people and doubling as a computer desk.



**GALLEY** The refrigerator features Titanium Touch stainless finish doors that have the look of stainless steel, resist fingerprints and are warmer to the touch than traditional stainless steel. The doors also have a steel core so you can use your favorite kitchen magnets.



**DRAWER SLIDES** Drawers open completely on full-extension drawer slides.



**WASTEBASKET** We pay attention to the smallest details, even adding formed handles to the wastebasket that accommodate plastic grocery bags.



**WEB BenchMark™** This innovative dinette offers innerspring cushions, large storage bins and converts into a comfortable bed.



**DINING TABLE** An available table provides elegant dining for two people and expands to seat four.



**MULTIFUNCTION TABLE** This available table doubles as a computer desk and expands to accommodate four dinner guests.



## GET MOVING

The Meridian gives you full command with an ergonomic dash and a touchpad transmission control. The high-back driver and passenger seats feature adjustable lumbar support and can be upgraded to UltraLeather for an added touch of luxury. The passenger seat is available with a footrest and the driver's seat can be enhanced with a six-way power pedestal.

The available power sunvisor upgrade makes visor adjustment as easy as the touch of a button. Shades on the driver and passenger windows have both opaque and sheer sections for excellent glare protection.

The rearview monitor provides added peace of mind when backing and maneuvering. A sideview video camera system can also be added which is activated by your turn signal and allows the driver to view the side of the coach through the rearview monitor.

The RV Radio® includes AM/FM stereo, CD player, weather band and large, easy-to-use buttons and knobs. Upgrade your RV Radio with the available Sirius® Satellite\* radio package. Sirius brings you 120 channels of crystal-clear programming and a free six-month subscription.

\*Sirius Satellite radio not available in Canada.



**DASH** Designed with ergonomic styling, the dash places controls right at your fingertips, including a steering wheel remote for the RV Radio.



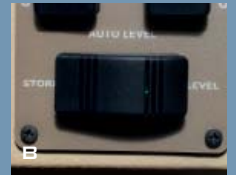
### KEYONE™

Allows you to open the entrance door, storage compartments and dual fuel-fill doors with a single key. For added convenience, unlock and lock the doors with the keyless remote.



### SIDE CAMERAS

Available side-mounted video cameras provide a clear view of the side of the coach when turning.



**LEVELING JACKS** New for 2007: our exclusive three-position hydraulic switching system. Control your jacks from the A) driver's seat, B) entrance door or C) service center. Watch the jacks as you lower them from the entrance door or service center for perfect placement on jack pads.

## GET HOOKED UP

The service center makes hookups a snap with color-coded labels. The heated compartments are full of well-planned features like the QuickConnect® coupling valve, QuickPort® service connection hatch, and the residential-style, full-coach water filtration system.

QuickPort eliminates the hassle of feeding hoses through a tiny access hole, while still allowing bay doors to close when connected to hookups.

The QuickConnect coupling valve is an easy-to-operate connection point for quick and easy hookups. For added convenience it even has its own storage holster. A wash station lets you clean up outside to keep muddy feet from tracking inside coach.

A number of Smart Storage™ features let you haul more gear. These include the StoreMore® slideout system and custom-designed compartments such as the ladder storage sleeve and the available pullout trays. You'll find a portable satellite dish hookup in the service center (satellite dish not included).



**WEB STOREMORE** The StoreMore slideout system allows exterior storage compartments to move with the slideout for easy access to your gear.



**LADDER** This available folding ladder tucks into a customized enclosure so it's always close at hand.



**SERVICE CENTER** The QuickConnect coupling valve makes for quick and easy connections to the waste dump. QuickConnect and the QuickPort service connection hatch are part of the service center.



**EXTERIOR ENTERTAINMENT CENTER** Includes AM/FM stereo, CD player, speakers, 12-volt powerpoint, 110-volt outlet and a TV jack.



**AVAILABLE PULLOUT TRAYS** Provide quick access to stored items (NA 39K).



## HAVE MORE FUN

The Meridian is loaded with features that make life better. The standard patio awning or available electric patio awning is great for tailgating or enjoying a nice breeze in the shade. And no matter where you park, you'll have access to 110-volt power from the 8,000-watt Onan generator.

A rugged diesel engine gives you confidence on any road while an exhaust brake provides extra stopping power on hills without excessive wear on the brake pads.

When it's time to store your Meridian, the battery disconnect switch provides a simple way to prevent battery drain. Breakaway mirrors fold tight to the coach for extra storage clearance.



**FREIGHTLINER** The Itasca Meridian is exclusively offered on a Freightliner® chassis, specifically designed and created for RV applications. Freightliner has a well-known reputation for providing top-quality chassis and vehicles. Front and rear suspensions, designed to work as an integrated system, provide the surest, smoothest ride in the industry. And "bump steer?" With Freightliner, it's a thing of the past. Even when your motor home comes in contact with a pothole, there's virtually no steering-wheel motion in reaction to the suspensions' movement. Top that with a network of more than 400 diesel service locations in the United States and Canada, many open 24 hours a day 7 days a week. That means less downtime and quick return to your travels.



**WEB ONE PLACE™** This systems center, located near the galley, houses frequently checked gauges, switches and controls.



**WEB TRUELEVEL** Eliminate the guesswork when it comes to tank levels with our exclusive TrueLevel™ holding tank monitoring system. It incorporates detector cells that read liquid levels from outside the tank. No probes means no more corrosion, just accurate readings time after time.



**WEB POWERLINE®** This energy management system monitors electrical usage and automatically cycles appliances on and off to prevent power overloads.



**CHASSIS BATTERY DISCONNECT SWITCH** Conveniently located in the engine compartment, the battery disconnect switch helps prevent chassis battery drain when storing your Meridian.



**WEB TRUEAIR** The TrueAir residential central air conditioning system with heat pump cools 40% faster and runs 10% quieter than roof airs. It is powered by a Coleman-Mach® cooling unit located in the basement for a lower vehicle profile.







WEIGHTS & MEASURES	34H	36G	39K
Length	34'9"	36'5"	39'3"
Exterior Height <sup>1</sup>	11'8"	11'7"	11'9"
Exterior Width <sup>2</sup>	8'5.5"	8'5.5"	8'5.5"
Exterior Storage <sup>3</sup> (cu. ft.)	99.4	118.7	98.7
Awning Length	18'	20'	20'
Interior Height	6'8"	6'8"	6'8"
Interior Width	8'0.5"	8'0.5"	8'0.5"
Freshwater Capacity w/Heater <sup>4</sup> (gal.)	92	92	92
Holding Tank Capacity - Black/Gray <sup>4</sup> (gal.)	62 / 54	54 / 54	54 / 54
LP Capacity <sup>5</sup> (gal.)	31	31	31
Fuel Capacity (gal.)	90	90	90
GCWR <sup>6</sup> (lbs.)	37,910 <b>A</b>	37,910 <b>A</b>	39,410 <b>B</b>
GVWR (lbs.)	27,910 <b>A</b>	27,910 <b>A</b>	29,410 <b>B</b>
GAWR - Front (lbs.)	10,410 <b>A</b>	10,410 <b>A</b>	10,410 <b>B</b>
GAWR - Rear (lbs.)	17,500 <b>A</b>	17,500 <b>A</b>	19,000 <b>B</b>
Wheelbase	208"	228"	262"

AUTOMOTIVE/CHASSIS	34H	36G	39K
<b>A Freightliner® Chassis Caterpillar®</b> – 7.2L turbo-charged diesel, 350-hp, rear radiator, Allison® 6-speed electronic 3000 MH transmission, NeWay front & rear air suspension, 160-amp. alternator, exhaust brake, 4-wheel ABS, <b>Wheels</b> stylized aluminum	<b>S</b>	<b>S</b>	
<b>B Freightliner Chassis Caterpillar</b> – 7.2L turbo-charged diesel, 350-hp, rear radiator, Allison 6-speed electronic 3000 MH transmission, NeWay front & rear air suspension, 160-amp. alternator, exhaust brake, 4-wheel ABS, <b>Wheels</b> stylized aluminum			<b>S</b>
<b>Leveling Jacks</b> HWH® hydraulic, 3-way switching system, <b>Steering Wheel</b> vinyl wrapped, <b>Trailer Hitch</b> <sup>6</sup> 10,000-lb. drawbar/500 lbs. maximum vertical tongue weight & 7-pin wiring	<b>S</b>	<b>S</b>	<b>S</b>

CAB AREA & DRIVER CONVENIENCES	34H	36G	39K
<b>C.B. Wire Prep</b> 12-volt DC power supply, <b>Cab Seats (Fabric)</b> armrests, lumbar support, multiadjustable slide/recline & swivel, <b>Console Center Cabinet, Cruise Control, Defroster Fans</b> auxiliary 2-speed w/instrument panel switch, <b>Exhaust Brake Switch, Map Lights, Monitor System</b> rearview b/w w/single camera & 1-way audio, Audiovox® <b>Power Door Lock</b> w/keyless entry, <b>Powerpoints</b> 12-volt DC, <b>Shades</b> cab windows, light filtering, <b>Sliding Stepwell Cover Panel</b> powered, <b>Sunvisors, Window (Driver)</b> full-slider w/screen, dual-glazed/thermo-insulated, <b>Window (Passenger)</b> partial-slider w/screen, dual-glazed/thermo-insulated, <b>Windshield Wipers</b> intermittent, pantographic arms	<b>S</b>	<b>S</b>	<b>S</b>

CAB AREA & DRIVER CONVENIENCES	34H	36G	39K
<b>Cab Seat</b> 6-way power-assist (driver), <b>Cab Seats (UltraLeather™)</b> , <b>Cab Seat</b> passenger seat w/footrest, <b>GPS Navigational System, Sunvisors</b> powered, <b>Video Camera System</b> side-mounted cameras	<b>0</b>	<b>0</b>	<b>0</b>

ENTERTAINMENT	34H	36G	39K
<b>Entertainment Center (Exterior)</b> DC receptacle, AC duplex receptacle, AM/FM radio w/CD player & remote, TV jack, radio antenna, speakers, lockable compartment, <b>Home Theater Sound System</b> amplifier, DVD, receiver, speakers (5), subwoofer, <b>RV Radio® (Cab)</b> AM/FM/Stereo/CD, weather band, remotes, roof-mounted flexible rubber antenna, speakers (4), <b>Radio Power Switch</b> main/auxiliary battery, <b>Satellite System Ready, Telephone</b> input & interior jacks, <b>TV</b> (rear) AC 20" color, stereo w/remote, <b>TV</b> (front) AC 24" color w/remote, <b>TV Enhancement Package</b> antenna (amplified), interior jack(s), coax wiring, cable input, exterior jack, <b>Video Selection System</b>	<b>S</b>	<b>S</b>	<b>S</b>
<b>Compact Multi-disc Changer</b> w/remote, <b>Satellite Dish Antenna</b> RV digital, automatic, <b>Satellite Radio</b> Sirius®, includes antenna, receiver, remote & a 6-month prepaid subscription (NA in Canada), <b>Satellite Dish</b> RV digital, in-motion, King-Dome®, <b>Stereo System</b> (rear) AM/FM/CD/DVD player, front aux. input, front headphone jack, alarm clock	<b>0</b>	<b>0</b>	<b>0</b>

INTERIOR	34H	36G	39K
<b>Ceiling</b> vinyl, <b>Countertops</b> solid-surface, galley & bath, <b>Lights</b> ceiling w/wall switches, incandescent, galley, bath, bedroom, <b>Light</b> decorative, dinette, <b>Lights</b> fluorescent, dinette, bath, hallway, lounge w/wall switches, <b>Lights</b> reading, lounge, bedroom area, <b>Mini Blinds</b> galley & bath area, <b>Roof Vent</b> bath area, powered fan, insulated, <b>Roof Vent</b> galley, powered ventilator fan, insulated, <b>Shade</b> front wraparound, pleated w/wands, <b>Shades</b> pleated, day/night w/blackout, lounge, dinette & bedroom areas, <b>Windows</b> dual-glazed/thermo-insulated/flush-mounted	<b>S</b>	<b>S</b>	<b>S</b>

FURNITURE	34H	36G	39K
<b>BenchMark™ Full Comfort Dinette (Fabric)</b> w/access to storage below, child seat tether anchor	<b>S</b>	<b>S</b>	<b>S</b>
<b>Banquette (Fabric or UltraLeather)</b> w/throw pillows, access to storage below	<b>0</b>	<b>0</b>	
<b>Dining Table &amp; Chairs</b> freestanding (2), folding (2)	<b>0</b>	<b>0</b>	<b>0</b>
<b>Dining/Computer Table &amp; Chairs</b> freestanding (2), folding (2)	<b>0</b>	<b>0</b>	<b>0</b>
<b>J-Lounge (UltraLeather)</b> w/access to storage below, throw pillows			<b>0</b>
<b>Lounge Chair (Fabric)</b> hoop-base, recline/rocker/swivel/slide w/footrest, pull-out table	<b>S</b>	<b>S</b>	
<b>Lounge Chair (UltraLeather)</b> hoop-base, recline/rocker/swivel/slide w/footrest, pull-out table	<b>0</b>	<b>0</b>	
<b>Lounge Chair (UltraLeather)</b> Euro recliner w/ottoman	<b>0</b>	<b>0</b>	
<b>Rest Easy® Multi-Position Lounge (Fabric)</b> 75" x 70" w/dual trundles, throw pillows		<b>S</b>	
<b>Rest Easy Multi-Position Lounge (UltraLeather)</b> 75" x 70" w/dual trundles, throw pillows		<b>0</b>	
<b>Rest Easy Multi-Position Lounge (Fabric or UltraLeather)</b> 75" x 60" w/dual control, throw pillows	<b>0</b>	<b>0</b>	<b>0</b>
<b>Rest Easy Multi-Position Lounge (Fabric)</b> 75" x 60" throw pillows	<b>S</b>		<b>S</b>
<b>Sofa (Fabric)</b> access to storage below, throw pillows			<b>S</b>

GALLEY	34H	36G	39K
<b>Faucet</b> single-control w/pullout sprayer, Moen®, <b>Microwave/Convection Oven</b> w/range fan, exterior vent, sensor cook feature, residential 30," stainless steel, Sharp®, <b>Pantry, Range Cover</b> solid surface material, <b>Range Top</b> 3-burner, recessed, sealed burners, piezo ignition, one high output burner, Amana®, storage below, <b>Refrigerator/Freezer</b> large double-door, Titanium Touch stainless finish, Norcold®, <b>Sink Covers</b> (countertop material), <b>Wastepaper Basket, Water Filtration System</b> Everpure®	<b>S</b>	<b>S</b>	<b>S</b>



GALLEY	34H	36G	39K
<b>Storage Cabinet</b> large roll out island storage bin			S
<b>Refrigerator/Freezer</b> large double-door w/icemaker or four-door w/icemaker, Titanium Touch stainless finish, Norcold	0	0	0

BATH	34H	36G	39K
<b>Cabinet</b> lavatory, <b>Cabinet(s)</b> linen/storage, <b>Faucet (Lavatory)</b> single-control, <b>Faucet (Shower)</b> single-control fixed showerhead w/Moen Posi-Temp®, <b>Light</b> shower, <b>Lights</b> makeup	S	S	S
<b>Shower Package</b> fold-down shower seat, handheld showerhead	0	0	0

BEDROOM	34H	36G	39K
<b>Bed</b> queen, Serta®, innerspring w/underbed storage (NA 39K), bedspread, pillows, headboard	S	S	S
<b>Sleep Number®</b> queen-size mattress by Select Comfort™	0	0	0

EXTERIOR	34H	36G	39K
<b>Awning</b> patio, manual, <b>Awning Rails</b> w/rain gutters, <b>Door</b> entrance w/screen door, deadbolt lock, keyless entry, <b>Entrance Door Step</b> single, electric w/doorjamb switch, <b>Ladder</b> , <b>Light</b> porch, <b>Light</b> under hood, <b>Light</b> service, driver's side, <b>Fuel-Fill Doors</b> locking, <b>Mirrors</b> electric remote w/defrost, turn signal, <b>Mudflaps</b> rear, <b>Receptacle</b> AC duplex, <b>Sidewall Skin</b> 1-piece smooth fiberglass, high-gloss, <b>Storage Compartments</b> smooth valance panels, trunk liner, gas struts, TriMark® KeyOne™ System, paddle latch, lights	S	S	S
<b>Air Horns</b> roof-mounted, <b>Awning</b> entry door, box style, manual, <b>Awning Package</b> electric, patio w/wind sensor & remote, w/full-body paint, <b>Front Protective Mask</b> w/full-body paint only, <b>Mud Guard</b> full-width, rear, <b>Step Ladder</b> folding, storage box located in StoreMore® storage compartment	0	0	0
<b>Compartment Tray(s)</b> pullout	0	0	

SYSTEMS	34H	36G	39K
<b>HEATING/AC – Automotive Heater/Air Conditioner</b> blend air system, <b>Furnace</b> 40,000 BTU, <b>PowerLine</b> energy management system, <b>TrueAir®</b> residential central air conditioning w/heat pump	S	S	S

SYSTEMS	34H	36G	39K
<b>ELECTRICAL – Auxiliary Start Circuit, Batteries (Coach)</b> deep-cycle (2), <b>Battery (Chassis)</b> disconnect system, <b>Dual Battery</b> charge control (automatic), <b>Electrical Distribution System</b> AC & DC breaker panels, <b>Electrical System Display Center, Generator</b> 8,000-watt, Onan® Quiet Diesel™, <b>Generator/Shoreline Automatic Changeover Switch, Inverter</b> DC/AC, 600-watt, <b>OnePlace® Systems Center</b> wall-mounted, courtesy light, battery digital voltmeter, PowerLine® energy management display, generator hourmeter gauge, generator start/stop switch, heating & AC thermostat, holding tank levels, LP tank level, solar panel/battery charger light, water heater switch, water heater on light & pilot indicator light, water pump switch, water tank level, <b>Power Cord</b> 50-amp., <b>PowerLine</b> energy management system, <b>Service Center (Electrical)</b> cable input, power cord, shoreline/generator automatic changeover switch, telephone input, portable satellite dish hookup, <b>Solar Panel</b> 10-watt battery charger	S	S	S
<b>Batteries (Coach)</b> deep-cycle (3), <b>Inverter/Charger</b> DC/AC, 2,000-watt w/remotable panel	0	0	0
<b>PLUMBING/LP – Drain</b> 1½" water tank, <b>Service Center (Drainage)</b> drainage valves, holding tank flushing system, 10' sewer hose w/QuickConnect® coupling valve, QuickPort® service connection hatch, <b>Service Center (Water)</b> city water diverter fill, drain for freshwater system, exterior wash station w/pump switch, QuickPort service connection hatch, <b>Tank</b> flushing system, black tank only, <b>Tank</b> holding, heated compartment, <b>Tank</b> LP, permanent mount w/gauge, <b>TrueLevel™</b> holding tank monitoring system, <b>Washer/Dryer Prep, Water Heater</b> 10-gallon electronic ignition, LP gas/120 VAC w/motoraid, <b>Water Hookup</b> city, <b>Water Pump</b> demand, <b>Water Tank Fill</b> pressurized city hookup w/diverter valve, locking door, <b>Water System Filtration Package</b> replaceable filter, filter housing, wrench, <b>Water System Winterization Package</b> water heater bypass valve & siphon tube	S	S	S
<b>Washer/Dryer Combination</b>	0	0	0

SAFETY	34H	36G	39K
<b>Assist Bars</b> interior, <b>Assist Handle</b> exterior, <b>Bumpers</b> front & rear, <b>Child Seat Tether Anchor, Detectors/Alarms</b> LP leak, smoke, carbon monoxide, <b>Docking Lamps, Fire Extinguisher</b> 10 BC, <b>Ground Fault Interrupter, Lights</b> daytime running, <b>Light</b> high-mount brakelamp, <b>Lights</b> courtesy w/wall switches, <b>Lights</b> fog lamps, <b>Seat Belts</b> cab, 3-point, <b>Seat Belts</b> lap (in selected areas), <b>Window</b> escape, <b>Windshield</b> laminated safety glass	S	S	S

WARRANTY <sup>7</sup>	34H	36G	39K
<b>12-month/15,000-mile basic limited warranty<sup>8</sup>, 36-month/36,000-mile limited warranty on structure<sup>8</sup>, 10-year limited parts &amp; labor warranty on roof skin<sup>8</sup></b>	S	S	S

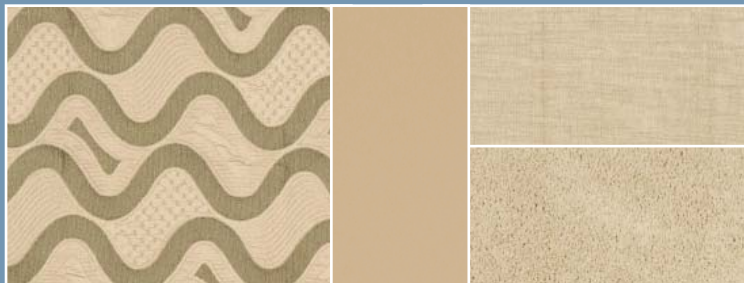
- The height of each model is measured to the top of the tallest standard feature and is based on the curb weight of a typically equipped unit. The actual height of your vehicle may vary by several inches depending on chassis or equipment variations. Please check with your dealer for further information.
  - Meridian floorplans feature a wide-body design – over 96". In making your purchase decision, you should be aware that some states restrict access on some or all state roads to 96" in body width. Before making your purchase decision, you should confirm the road usage laws in the states of interest to you.
  - The load capacity of your motor home is designated by weight, not by volume, so you cannot necessarily use all available space when loading your motor home.
  - Capacities are based on measurements prior to tank installation. Slight capacity variations can result due to installation applications.
  - Capacities shown are tank manufacturer's listed water capacity (W.C.). Actual filled LP capacity is 80% of listing due to overfilling prevention device on tank.
  - Actual towing capacity is dependent on your particular loading and towing circumstances which includes the GVWR, GAWR, and GCWR as well as adequate trailer brakes. Please refer to the Operator's Manual of your vehicle for further towing information.
  - See separate chassis warranty.
  - See your dealer for complete warranty information.
- NA** Not Available  
**S** Standard  
**O** Optional
- Not all items available in combination. See dealer for details. Winnebago Industries® continuing program of product improvement makes specifications, equipment, model availability, and prices subject to change without notice. Comparisons to other motor homes are based on the most recent information available at printing.



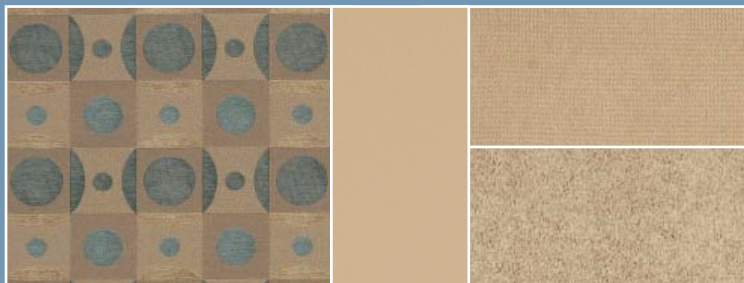
## INTERIOR DECOR

Choose from three fabric selections and three cabinet wood choices with nickel hardware.

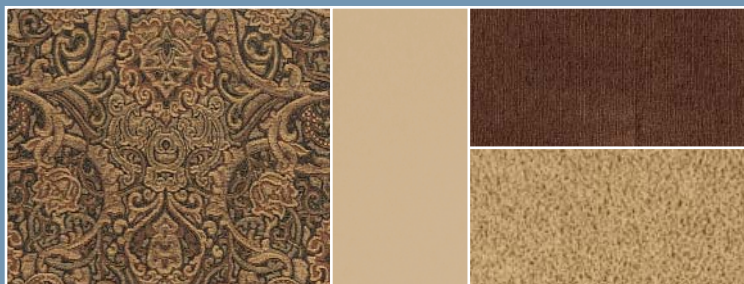
SOFA	ULTRA LEATHER	ACCENT
		CARPET



Irish Creme w/available Buff UltraLeather™



Harbor Lights w/available Buff UltraLeather



Pumpernickel w/available Buff UltraLeather



Concert Cherry



Washed Maple



Sierra Maple

## EXTERIOR DECOR



Alpine Mist



Golden Pond



Sedona

Welcome to Winnebago Industries, Inc.  
<http://www.winnegobind.com/>

PRODUCTS RESOURCES COMPANY CLUBS/EVENTS CONTACT DEALERS ONLY WEB [Default & Key Feature](#)

Select a category from above.

Popular Links

- Winnebago RVs
- Itasca RVs
- Key Features
- Dealer Locator



The 2007 coaches have arrived.

WINNEBAGO INDUSTRIES' FEATURED PRODUCTS

Introducing the 2007 Itasca Impulse™

**TRUEAIR**  
Costs 40% Faster. Wastes 15% Greener!

**SIRIUS**  
Available Sirius Satellite Radio. NA Canada.

**WINNEBAGOIND.COM** Visit us on the web for more info on all of our motor homes and a host of web-exclusive content.



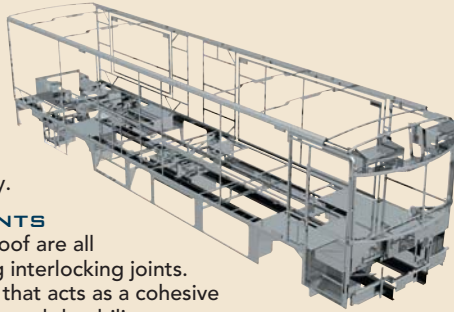


**BUILT BY WINNEBAGO INDUSTRIES.  
BUILT TO LAST.**

Itasca motor homes are built by Winnebago Industries, the company that defined motor homes. The company that built its reputation on quality construction. The company that transformed the motor home concept into a way of life.

Today, Winnebago Industries brings that reputation for quality and its 48-year history of motor home innovation to the design and construction of every motor home. It's all a part of SuperStructure® our exclusive system of proprietary structural components that instills each motor home with improved strength and durability.

**SOLID FOUNDATION** Steel and aluminum truss work provides a solid, flat foundation for floors and sidewalls. Winnebago Industries engineers also take special care to distribute the weight of components to ensure proper handling and stability.



**INTERLOCKING JOINTS**  
The floors, sidewalls and roof are all integrally connected using interlocking joints. This creates a coach body that acts as a cohesive unit for improved strength and durability.



**E-COATING** Winnebago Industries employs an exclusive 12-stage automotive-style dip tank process to apply an advanced electrodeposition coating on critical steel components for unmatched corrosion protection.



**THERMO-PANEL® SIDEWALLS** Invented by Winnebago Industries, Thermo-Panel construction combines a fiberglass panel, high-density, block-foam insulation and aluminum support structures to create some of the most durable, lightweight sidewalls in the industry.

**ATTENTION TO DETAIL** Whether it's sending every coach through a high-pressure water tunnel to check for leaks or labeling each individual wire and bar-coding parts to save time and frustration during service, Winnebago Industries considers every detail to ensure your Itasca motor home provides you with years of pleasure.

**STRONG AS STEEL** Appliances are secured directly to embedded steel plates for added safety. Windshields are also mounted in steel with an automotive-style sealant; lesser designs use a rubber gasket to mount the windshield in fiberglass.



1-year-old Itasca fiberglass roof



1-year-old competitor's rubber roof

**FIBERGLASS ROOF** The Meridian features a crowned, one-piece fiberglass roof, backed with a 10-year limited parts-and-labor roof skin warranty. Fiberglass offers superior strength, attractiveness and durability over the rubber roofs found on many competitive models which can chalk, streak and degrade over time. Fiberglass also provides increased puncture and tear resistance.



**TAKE A TOUR** We're proud of our process, state-of-the-art facilities and the people who make Winnebago Industries number one. We invite you to visit our factory in Forest City, Iowa, for a first-hand look at the dedication and technology behind every motor home we build.



**RECOGNIZED QUALITY** The Recreation Vehicle Dealer Association annually rates RV manufacturers and awards the Quality Circle award to manufacturers who provide exceptional products, service and support. Winnebago Industries is proud to be the only manufacturer to receive this award every year since its inception.



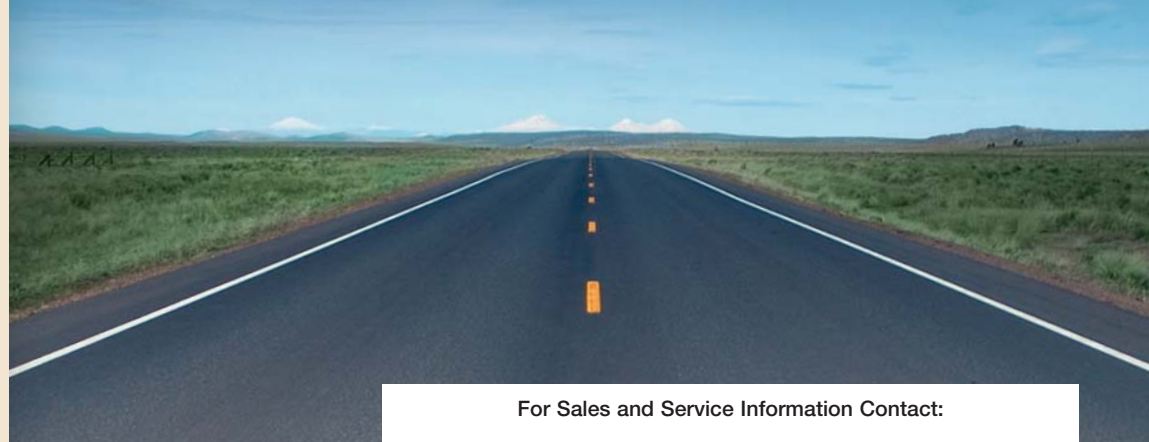
**COMMITTED TO SERVICE** We back our motor homes with the industry's best service after the sale.

- 12-month/15,000-mile basic limited warranty
- 36-month/36,000-mile limited warranty on structure
- Standard 10-year limited parts-and-labor roof skin warranty
- Complimentary 24-hour roadside assistance program
- TripSaver Fast Track Parts. TripSaver guarantees that in-stock warranty parts ship directly to your dealer within 24 hours.
- National dealer service network



**WIT CLUB** Itasca owners are like family. Joining the Winnebago-Itasca Travelers is a great way to meet and travel with other Itasca enthusiasts. Members enjoy:

- Caravans and rallies
- Local and state group activities
- RV travel benefits



For Sales and Service Information Contact:



Built proudly by



NYSE listing: WGO

©2006 Winnebago Industries, Inc.

Printed in USA

Seat belts are your most important hookup. Always buckle up.