

FIFTH WHEELS

Cougar

www.keystonerv.com/cougar

by Keystone



WESTERN EDITION

Cougar
by Keystone



WHERE LUXURY & LIGHTWEIGHT MEET



Get the free app at
<http://gettag.mobi>
and scan this tag.

Cougar
by Keystone



L-SHAPED MULTI-FUNCTIONAL SLEEPER SOFA
AVAILABLE ON COUGAR 327RESWE AND 331MKSWE

THE 327RESWE CONTINUES TO BE ONE OF OUR MOST POPULAR MODELS.

The interior boasts an abundance of storage space and its residential elegance is topped off by extra large windows (all of which open for cross ventilation).



327RESWE (SHOWN IN BRONZE DECOR)



327RESWE BEDROOM

Designed with Your Family's Needs in Mind



333MKSWE (SHOWN IN AUBURN DECOR)

IT IS OUR GOAL TO GIVE EVERY COUGAR A RESIDENTIAL LOOK AND FEEL WITH ADDED FEATURES THAT YOU AND YOUR FAMILY WILL APPRECIATE.

- Large Bathroom Sink
- Porcelain Foot Flush Toilet
- Residential Bedroom and Bathroom Door Heights
- LED Vanity Mirror Lights
- Residential Comfort Camp III Pillow Top Mattress (Silver Label Edition)
- Unbeatable Wardrobe Storage
- Large Vanity Mirror
- Largest Windows in its Class with Day and Night Shades

THE COUGAR 333MKSWE IS THE PERFECT COMBINATION OF FORM AND FUNCTION.

Relax or entertain in an upscale, spacious living area. Enjoy the comforts of a bed/bath suite with an oversized residential shower and vanity.

30"X 60" SHOWER IN 333MKSWE

Storage, Comfort and Convenience



320QBSWE LIVING AREA (SHOWN IN BRONZE DECOR)



Part of what has made Cougar such a success over the years is our ability to incorporate customers wants and needs into a variety of floorplans. The Cougar 326SRXWE combines a garage model fifth wheel with a residential main living area. This creates the perfect unit for a variety of hobbies.



320QBSWE BUNK ROOM

Variety



331MKSWE KITCHEN

COUGAR "EXECUTIVE CHEF KITCHEN" INCLUDES:

- ① High Rise Faucet
- ② Sink Covers
- ③ Dedicated Trash Can Storage
- ④ Large Solid Surface Countertop
- ⑤ 22" Oven
- ⑥ Easy to Reach Microwave Oven
- ⑦ Hand Glazed Maple Cabinet Doors and Drawers
- ⑧ Stainless Steel Sink
- ⑨ 8 Cubic Foot Refrigerator - N/A on 1/2 Ton Series
- ⑩ Best in Class Pantry Storage
- ⑪ Full Extension Drawer Guides
- ⑫ Utensil Drawer - All Models
- ⑬ Pots and Pans Drawers - Most Models



KITCHEN STORAGE



Cougar's commitment to having **best storage in its class** is evident in the deep pots and pan drawers as well as our large easy to reach pantries.



COUGAR FIFTH WHEELS HAVE SET A HIGHER STANDARD WITH **BEST IN CLASS** PASS THROUGH STORAGE.

Maximum Storage Capacity

Cougar
by Keystone



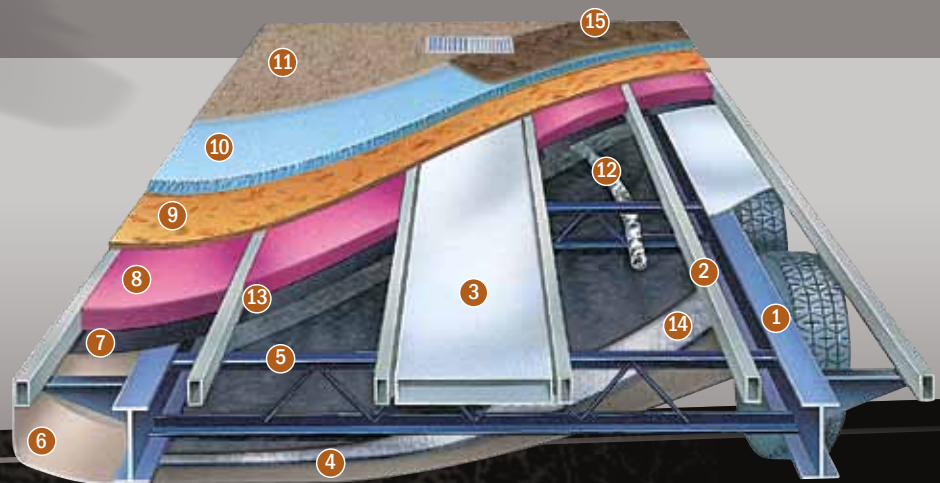
(5-SIDED ALUMINUM SUPER STRUCTURE)

- 1 One-piece EPDM rubber roof membrane with 12 year warranty
- 2 Radius roof transition molding
- 3 3/8" roof decking
- 4 5" fabricated rafters on 16" centers
- 5 Fiberglass insulation (R-14)
- 6 Ceiling decking Luan backer
- 7 Vinyl ceiling panel
- 8 Triple insulated, foam-core air conditioning duct
- 9 Hitch Vision (Patented)
- 10 Gel-coated Filon® fiberglass sidewall
- 11 1/8" Luan board (second layer in select models)
- 12 Solid block foam insulation (R-9)
- 13 Interior decorator wall board
- 14 2" welded aluminum wall studs
- 15 Electro-galvanized sheet (EGS) metal backing strips
- 16 Easy access adjustable snap jack pins
- 17 Industry leading "Max Turn" turning radius
- 18 Tinted safety glass windows
- 19 LED Docking lights
- 20 E-Z lube axles



FLOOR (R-14) + (R-15)

- 1 8" and 10" steel i-beam (powder coated)
- 2 3" Welded aluminum floor joists
- 3 3" Large-capacity insulated heat duct
- 4 1/4" polypropylene enclosed underbelly
- 5 Welded steel cross members
- 6 Full radius wrap aluminum enclosure
- 7 Woven moisture and vapor barrier
- 8 Fiberglass insulation (R-14)
- 9 5/8" Seamless floor decking
- 10 Carpet padding
- 11 Residential-grade carpeting with stain protectant
- 12 2" Heat duct from furnace into underbelly
- 13 Heated, enclosed water lines
- 14 Astro-Foil insulation barrier (R-15)
- 15 Upgraded residential Beauflor® resilient flooring



Cougar Construction

MOR/RYPDE SUSPENSION

MOR/ryde
**BEST IN
CLASS**
SUSPENSION

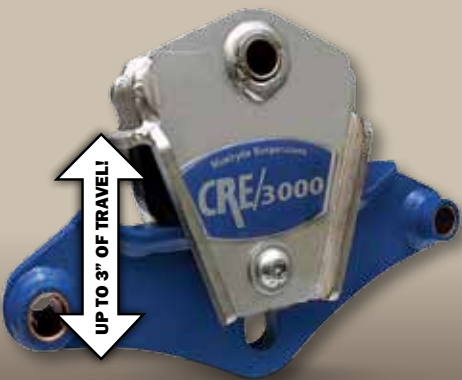
What does "Best-In-Class" mean for a suspension system?

It means that all suspensions are not created equal. Like all other products, there are unique product segments relative to price and quality demands.

For suspensions, it looks something like this:

UPGRADED EQUALIZER = IMPROVED SUSPENSION TRAVEL OVER STOCK STANDARD, STOCK STEEL ROCKER ARM & LEAF SPRINGS

CRE/3000 RUBBER EQUALIZER



PATENTED
**HITCH
VISION**
"NO LOOKING
BACK"



COUGAR "HITCH VISION"

Hitch Vision moves the dial forward in what customers expect from an RV. There's no looking back!

Hitch Vision gives the fifth wheel user complete confidence to back up and align their truck to Cougar's extended hitch pin using only the built-in mirror for guidance. Automotive LED docking lights, which can be controlled by the E-Z Camp Cougar Remote, allow you to load or unload camping gear day or night. (Hitch Vision also comes in handy when using the E-Z Camp Cougar Remote to raise and lower landing gear.)

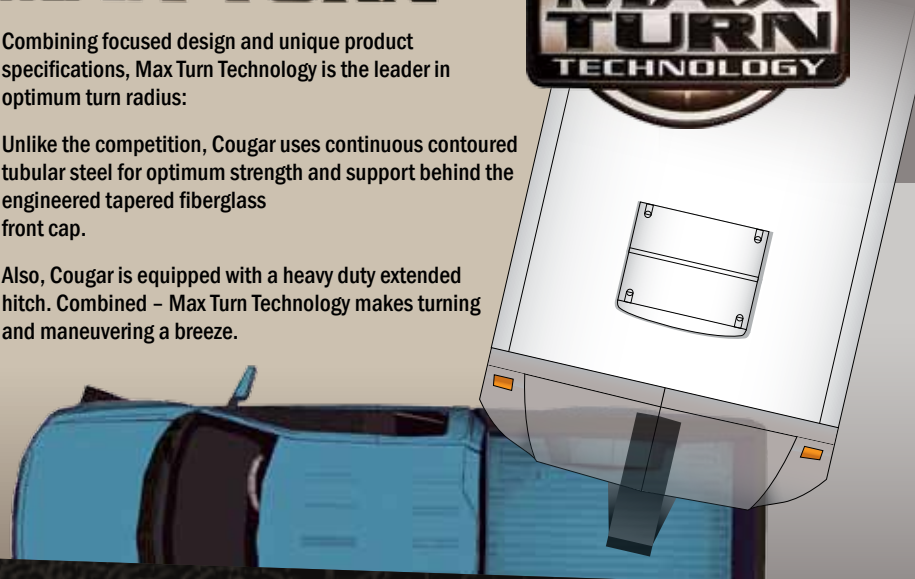
Once you've used Hitch Vision, "there's no looking back" to the inconvenience of turning or straining to see your fifth wheel.

MAX TURN

Combining focused design and unique product specifications, Max Turn Technology is the leader in optimum turn radius:

Unlike the competition, Cougar uses continuous contoured tubular steel for optimum strength and support behind the engineered tapered fiberglass front cap.

Also, Cougar is equipped with a heavy duty extended hitch. Combined - Max Turn Technology makes turning and maneuvering a breeze.



Advancing the Industry

Cougar
by Keystone

DSI

Annual RVDA DEALER
SATISFACTION INDEX



COUGAR HAS EARNED THE DSI AWARD AN UNPRECEDENTED 6 YEARS IN A ROW!

THE DSI (DEALER SATISFACTION INDEX) AWARD RATES THE LEVEL OF SATISFACTION THE DEALERS HAVE IN A MANUFACTURER. IT RATES MANUFACTURERS IN MANY AREAS SUCH AS: PRODUCT DESIGN, PRODUCT RELIABILITY & QUALITY, WARRANTY SUPPORT, AND PARTS SUPPORT.



**POLAR
PACKAGE
PLUS**

ZERO° DEGREE RATED

Cougar has been zero degree tested. The Polar Package Plus allows you to camp to zero degrees without worry of your tanks or water lines freezing up.

We also add upgraded insulation to our slide-out floors to control the hot and cold exchange and unlike our competition we merge our skirt metal to the I-Beam for complete enclosure of your fifth wheel underbelly.



A blue thermometer with a white scale showing 0 degrees Fahrenheit. The thermometer is positioned vertically on the right side of the advertisement, with a small amount of snow at its base.

HAND GLAZED MAPLE CABINETRY



At Cougar we are always trying to think of new ways to add value. With the new hand glazed maple cabinetry, there is a rich elegant appeal. Cougar also uses teflon spacer balls in all of our cabinet doors to prevent warping, bending and cracking.

CORIAN® COUNTERTOPS



With DuPont™ Corian® solid surface, your countertops are just as beautiful as the places you drive them to. Beautiful, nonporous and durable, DuPont™ Corian® solid surface is the #1 U.S. brand in kitchen and bathroom countertops, and a sure sign of a quality RV manufacturer. Also, due to its incomparable quality, Corian® has had zero RV product warranty claims since 2006.

Cougars touch screen command center features back lighted switches and places all of your controls in one convenient location.



Cougars comes outfitted with a black tank flush hook-up. This feature keeps the black tank clean and trouble free.



CD/DVD PLAYER

Also includes:
AM/FM, MP3, AUX INPUT,
USB PORT



MOR/ryde Suspension comes standard on all Cougar fifth wheels.



Cougar slam baggage doors offer added security and convenience while providing better insulation.



Cougar offers an optional fireplace in the 280, 318, 333, 326, 327, 330 and 331 floorplans



Another Cougar first: The rear storage rack provides a quick slide-away storage alternative. (N/A on 326)



The Cougar docking station conveniently locates and protects your outside hook ups for quick and easy set up. Also includes battery disconnect. (FW only)



Cougar's oversized sofa folds into a queen sized bed which is easy to setup and eliminates the need to inflate air mattresses or find an electrical outlet.



LED lights on the new front cap are a great way to make things more visible at night. Not to mention adding a modern touch that is energy efficient.

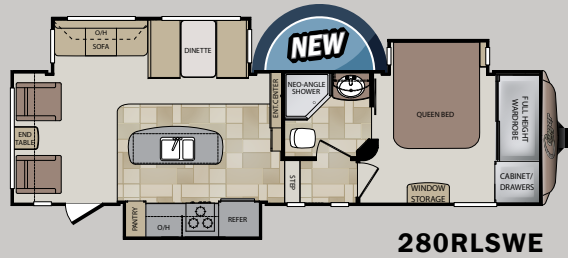


The exclusive "Smart Slide" free standing table slides back and forth to increase space between seating and the fixed dinette table.

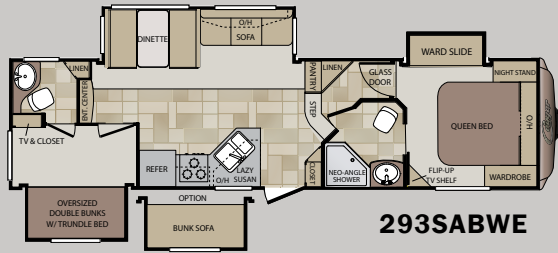


The Cougar Advantage

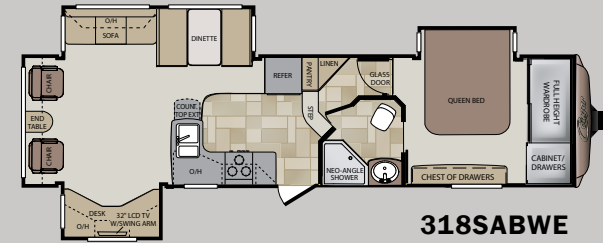
FIFTH WHEELS



280RLSWE



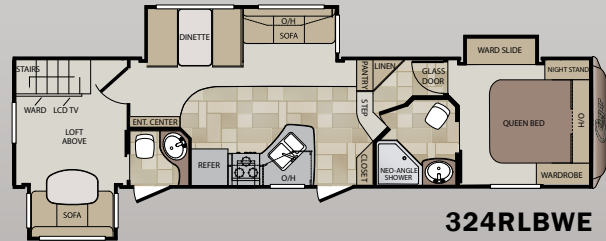
293SABWE



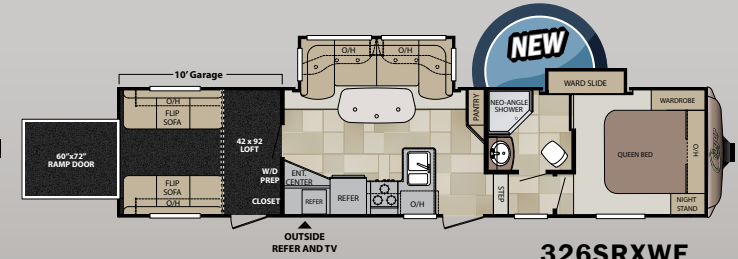
318SABWE



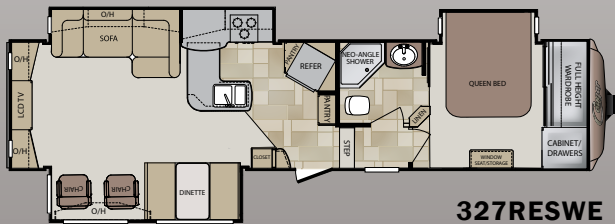
320QBSWE



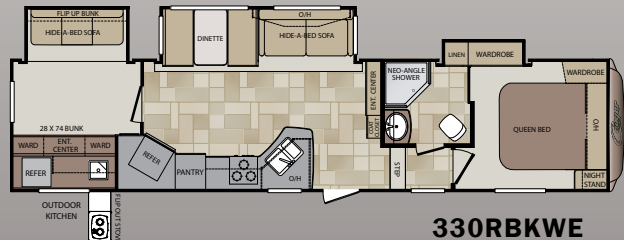
324RLBWE



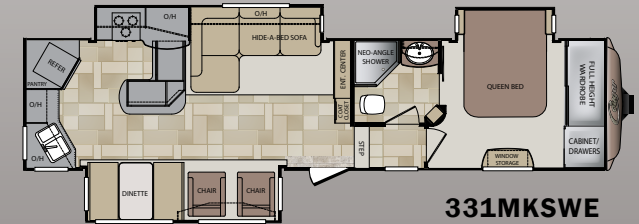
326SRXWE



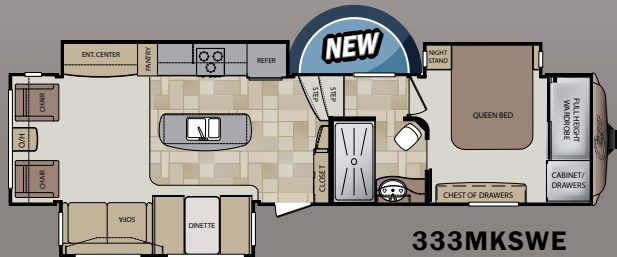
327RESWE



330RBKWE



331MKSWE



333MKSWE

FIFTH WHEELS

MODEL	280RLSWE	293SABWE	318SABWE	320QBSWE	324RLBWE	326SRXWE	327RESWE	330RBKWE	331MKSWE	333MKSWE
SHIPPING WEIGHT	9177	9392	9513	9671	10078	9815	10177	9996	10020	10222
CARRYING CAPACITY	2898	2658	2467	2529	1852	2855	1768	2269	2070	1833
HITCH WEIGHT	1675	1650	1580	1910	1530	2270	1545	1865	1690	1655
EXTERIOR LENGTH	32' 9"	33' 5"	34' 7"	36' 11"	36' 3"	37' 7"	36' 5"	37' 4"	36' 6"	36' 8"
EXTERIOR WIDTH	8'	8'	8'	8'	8'	8'	8'	8'	8'	8'
EXT. HEIGHT - A/C TOP	12' 3"	12' 3"	12'	12' 5"	13'	13'	12'	12' 10"	12'	12'
FRESH WATER (GAL.)	60	60	60	60	60	60	60	60	60	60
WASTE WATER (GAL.)	38	76	38	38	76	38	38	38	38	38
GRAY WATER (GAL.)	76	76	76	76	76	76	76	76	76	76
LP CAPACITY (LBS.)	60	60	60	60	60	60	60	60	60	60
AWNING LENGTH	16'	17'	16'	20'	17'	19'	12'	19'	11'	12'

STANDARDS, OPTIONS AND DECORS

CAMPING IN STYLE PACKAGE*

- Day and night shades
- Black trim safety glass windows (tinted to keep the sun out)
- Microwave oven with turn style
- Aluminum framed sidewalls, floor, front and rear walls, slide rooms
- 13,500 BTU air conditioner
- Raised-panel upper & lower cabinet doors throughout
- Cougar Comfort Camp III pillow top comfort mattress

- Rear stabilizer jacks
- Max Turn Technology front cap (fifth wheels only)
- MOR/ryde CRE 3000 Suspension

CONVENIENCE PACKAGE*

- Outside shower
- Residential refrigerator front
- Spare tire
- XL grab handle

COUGAR PACKAGE*

- Siam latch baggage doors
- 32" LCD TV
- Electric awning
- Radial tires
- Carbon monoxide detector
- Outside speakers
- Black tank flush
- XL Pass through storage with entertainment hook-up
- 16" wheels
- 8 cu ft refrigerator

- Outside LP quick connect
- Main entrance step light
- Battery disconnect
- Corian solid surface countertops
- Silver label graphics package
- Custom dyed fiberglass front cap

MANDATORY OPTIONS*

- Slide out bike/storage rack
- Cougar Camp Remote Control
- Polar Package Plus

COUGAR OPTIONS

- "Smart Slide" Free standing dinette
- Multi-Functional L-Shape sleeper sofa (327 & 331 only)
- 2 Swivel rockers
- 2 Recliners ipo 2 swivel rockers
- Jacknife ipo trundle bunk (293 only)
- Fireplace (N/A 293 & 324)
- 15,000 BTU Ducted air conditioning
- Aluminum wheels

NOTABLE STANDARD FEATURES

- 50 Amp Service
- E-Z lube hubs on axles (all models)
- Snap jack pins (all fifth wheels)
- 12' & under exterior height (most models)
- 30,000 BTU furnace
- One-piece seamless rubber roof
- Pre-Wire and Prepped for 2nd Air conditioner
- Patented Front Cap Hitch Vision
- Hand glazed maple raised panel upper & lower cabinet doors through out
- Solid hardwood slide fascia
- 19" LCD spare room TV (324, 326 & 330 only)
- Residential porcelain toilet with foot pedal
- All windows in main slide out open

SAFETY MUST-HAVES

- Manual backup on all main slide outs
- T-Mold bulb seals on all slide outs to keep slider sweeps on your slide out (stays on in hot weather)
- LP sensor
- Smoke detector
- Fire extinguisher
- Carbon monoxide detector

DRY CAMPING FEATURES

- 12 Volt stereo/MP3 compatible
- Large fresh, gray & black tanks (all models)
- All slide-out lights are 12 Volt
- Space for dual batteries
- 12' & under exterior height (most models)
- Entire underbelly enclosed to keep debris off tanks, water lines, etc.
- All lights 12V compatible

* Mandatory option

VALUE PACKAGE*

- True home CD/DVD system with speakers and separate zones (12-Volt compatible); MP3 player hookup on stereo
- Gas/electric water heater with quick recovery
- Residential shower/tub surround
- TV antenna
- Satellite/Cable hook-up
- Gel coated Filon® fiberglass
- Full walk-on roof & slideouts
- Fiberglass walls



DARE TO COMPARE

- #1 selling fifth wheel in its class (11 years in a row)
- Highest trade-in and resale value in the industry on average
- Hitch Vision (patented) front cap with docking lights & Max Turn Technology (fifth wheels only)

- Exclusive factory installed bike/storage rack on most fifth wheels and travel trailers
- Fully enclosed, underbelly with heated and enclosed dump valves
- 16.2 Gallons per hour – quick recovery water heater (great for bunkhouses)
- Oversized pass-thru storage doors
- Slide out seal is mounted in a "T" track (no sticky tape to hold slide seals on)
- Solid surface countertops

- Extra large slide-out windows open for cross ventilation
- Panoramic picture window at all dinettes
- Day/night shades
- Porcelain foot flush toilets
- Five side welded aluminum super structure
- R-9 sidewall, R-14 roof, R14+R15 floor insulation and R-15 astro-foil in the slide out
- Fully ducted air conditioning featuring triple insulated, foil wrapped, light weight ducts

- 12 Volt compatible for dry camping
- Outside docking station (fifth wheels only)
- Back lit inside command center
- Hand glazed maple cabinet doors
- Cougar remote with flashlight
- Polar package plus
- Full extension drawer guides
- Black tank flush
- Battery disconnect

Discover Which Options are Right for You