

COACHMEN | 2008 CHAPARRAL FIFTH WHEELS

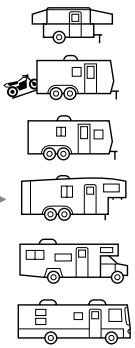


2008 Coachmen Chaparral™

Easy.

Comfort Where it Counts.



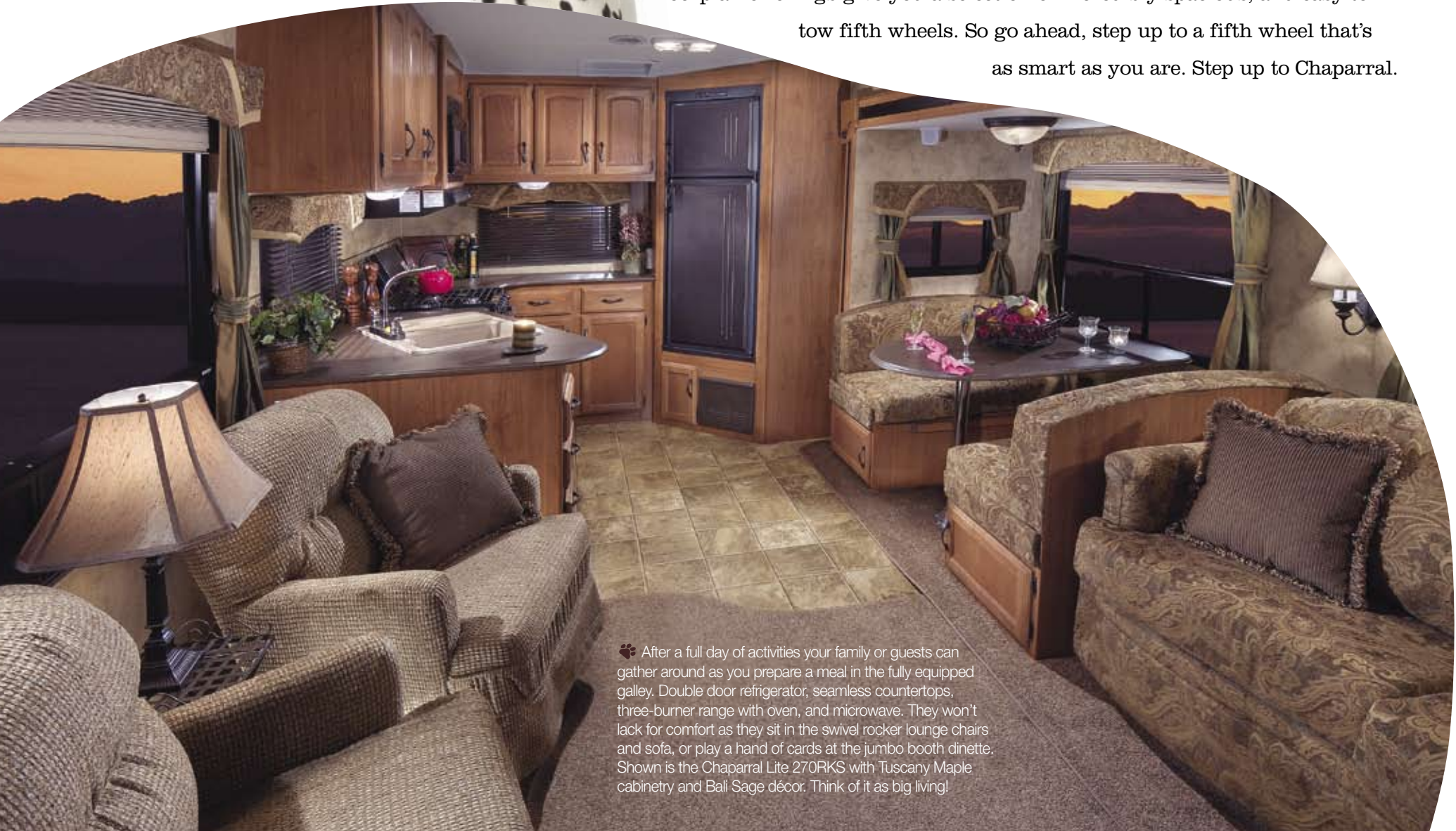


Chaparral™

It's Easy.



You've worked hard. Now comes the easy part, give yourself the reward you deserve with Chaparral by Coachmen. 🐾 Designed for today's pickups, Chaparral is loaded with thoughtful, easy-living amenities for over-the-road comfort and convenience. 🐾 Single, double and triple slide floorplan offerings give you a selection of incredibly spacious, and easy to tow fifth wheels. So go ahead, step up to a fifth wheel that's as smart as you are. Step up to Chaparral.



🐾 After a full day of activities your family or guests can gather around as you prepare a meal in the fully equipped galley. Double door refrigerator, seamless countertops, three-burner range with oven, and microwave. They won't lack for comfort as they sit in the swivel rocker lounge chairs and sofa, or play a hand of cards at the jumbo booth dinette. Shown is the Chaparral Lite 270RKS with Tuscan Maple cabinetry and Bali Sage décor. Think of it as big living!



High Profile



Mid Profile



Lite Profile

Features that matter.



🐾 EASY LIVING

Who says you can't take it with you? In the Chaparral there's plenty of door and drawer storage for all of your camping needs. And when it's time to unwind you can sit in front of the optional fireplace (select models) and enjoy the evening. Just like home!



🐾 EASY ENTERTAINMENT

After the day's fun, you can sit back and relax with the Dolby® Digital 5.1 surround system with DVD/CD player or watch your favorite shows on the optional LCD television.



Easy. Convenient!



🐾 Play hard during the day, sleep in comfort at night. The bedroom in the 331RLTS has a walk-around queen or king size bed with deluxe innerspring mattress and designer bedspread and window treatment. There's a closet for hanging clothes, an under the window dresser and extra storage space in the bed lift storage system. Sweet dreams!



Visit our website anytime at www.easyRVing.com

for more information, and easy shopping tools like

- Finding the right Coachmen for you.
- Comparing different Coachmen models.
- Building your own RV.



Coachmen



Easy to Use. Really.

Pete, the Coachmen mascot, symbolizes our commitment to being your best friend on the road. Like Pete, we're always there to make sure everything about your Coachmen is as easy and uncomplicated as possible, so you can escape from the hassles and worries of everyday life and enjoy RVing.

Your Coachmen will be easy to buy, easy to use and easy to own. That's our promise to you. We accomplish this in big ways through clever designs and superior support after the sale. But the real measure of being "easy" is the countless thoughtful touches we include throughout your new Coachmen.

Easy to Own. Honest.

At Coachmen, our commitment to you is your ongoing satisfaction. Our dealers are authorized to solve your problems on the spot and get you on your way without fuss, hassle or red tape. Also, should you ever need service or repair; it is easy to find one of the hundreds of Coachmen dealers or authorized repair centers nationwide.

Our toll-free service hotline (800-453-6064) and online service support center provide you access to a Coachmen service representative as well as access to warranty coverage information, maintenance information, troubleshooting tips, dealer locations and other helpful information on demand. We're with you every step of the way.

Coachmen. You couldn't ask for an easier traveling companion.

All information contained in this brochure is believed to be accurate at the time of publication. However, during the model year, it may be necessary to make revisions and Coachmen reserves the right to make all such changes without notice, including changes in prices, colors, materials, equipment and specifications, as well as the addition of new models and the discontinuance of models shown in this brochure. Therefore, please consult with your Coachmen dealer and confirm the existence of any materials, design or specifications that are material to your purchase decision.

COA-82 11.07 Printed in USA



Coachmen
Life should be so easy.

Coachmen Recreational Vehicle Company, LLC
P.O. Box 30, Middlebury, IN 46540



Easy to Enjoy. Seriously.

Just for purchasing a new Coachmen RV, we'll give you the valuable gift of a one-year membership in the Coachmen Owners' Association (C.O.A.). This means tons of awesome benefits designed to give you maximum enjoyment from your coach.

You'll enjoy exclusive discounts at campgrounds, theme parks, gas/diesel/LP fuel, magazines, and much more. You'll also get concierge service 24/7, enabling you to find and buy what you need, often at big discounts!

Other benefits include trip routing, vacation packages, event reservations, mail forwarding and our helpful owners magazine – Easy RVing. Plus annual camping events and support network and services for first-time RV buyers.

As the owner of any Coachmen recreational vehicle, we invite you to take advantage of your C.O.A. membership today by calling 888-422-2582.

To see how Coachmen is making the easy life even easier, visit www.easyRVing.com or call 1.800.353.7383.



2008 Coachmen Chaparral™ Easy.

Comfort Where it Counts.

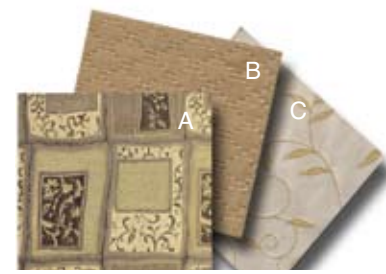
It's easy to enjoy a Chaparral. You're surrounded with residential style cabinetry, designer window treatments, a plush sofa and oil rubbed bronze hardware and fixtures. (331RLTS shown with Lakeside Maple cabinetry, Flexsteel® rocker recliner chairs and residential dinette with four chairs.) Life is good!



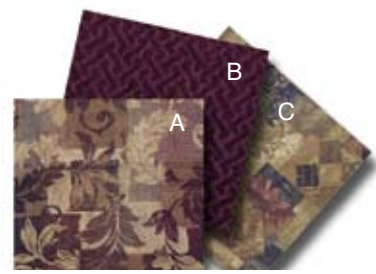
Decor Choices

FABRIC KEY
A. Main B. Accent C. Bedspread

Coachmen's dazzling interiors feature top-grade fabrics that have been tested for maximum durability.



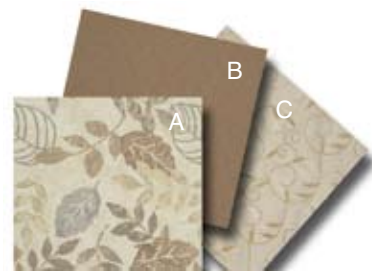
CAMEO CASCADE



SHIMMERING BRONZE



BALI SAGE



QUARRY SAND



LAKESIDE MAPLE



TUSCANY MAPLE

Easy Features

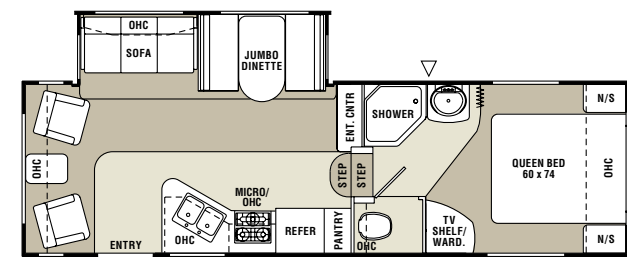
	LITE	MP	HP		LITE	MP	HP		LITE	MP	HP		LITE	MP	HP
LIVING APPOINTMENTS															
Tuscany Maple cabinetry	S	S	S	Residential microwave oven	P	P	P	PLUMBING AND LP SYSTEMS	P	P	P	Roof ladder	P	P	P
Lakeside Maple cabinetry	O	O	O	TV antenna	P	P	P	Double 30 lb. LP bottles	S	S	S	Rubber roof	S	S	S
Raised panel upper cabinet doors	S	S	S	Cable TV jacks	P	P	P	with auto change-over	P	P	P	Patio awning	P	P	P
Techwood drawer slides	S	S	S	Prewired for satellite dish	S	S	S	High spout kitchen faucet	S	S	S	Quick connect LP fitting	-	-	-
Full extension ball bearing drawer guides	S	S	S	Prewired for phone	S	S	S	On demand water pump	S	S	S	Stainless steel portable gas grill	-	O	-
Under sink silverware drawer	-	S	S	* Large 8 cu. ft. double door refrigerator	S	S	S	Water heater by-pass valve	S	S	S	30" wide entrance door	S	S	S
Linoleum flooring (kitchen and bath)	S	S	S	* 26" LCD television	O	O	O	* Porcelain toilet with foot pedal flush	S	S	S	Radius entrance and baggage doors	P	P	P
Carpet with pad (living and bedroom)	S	S	S	* Dolby® Digital 5.1 surround system	P	P	P	Gravity and city water hookups	S	S	S	Forged I-beam chassis construction	S	S	S
Designer window treatments	S	S	S	with DVD/CD player	-	-	-	Water center valve	-	-	-	Powder coated frame	S	S	S
Pleated window shades	P	P	P	Outside stereo speakers with TV hookup	-	S	-	Black tank flush	-	-	-	Retractable stabilizer jacks	S	S	S
Skylight (living area)	O	O	-	HEATING AND AIR CONDITIONING				Water Works™ utility panel	-	-	-	Fully enclosed and heated tanks	S	S	S
* Designer seamless countertops	S	S	S	31,000 BTU E.I. furnace	S	S	-	Monitor panel	S	S	S	and valves	S	S	S
Sink covers	S	S	S	34,000 BTU E.I. furnace	-	-	-	* 10-gallon gas/electric E.I. water heater	S	S	S	Equal-flex suspension upgrade	-	-	-
Waste basket	S	S	S	Ceiling fan	-	-	-	ABS shower surround	S	S	S	Power front jacks	P	P	P
Jackknife sofa	S	S	-	Comfort air ventilator fan	-	-	-	Skylight over shower	P	P	P	Quick release landing gear pins	S	S	S
Hide-a-bed sofa	O	O	S	* Even Cool™ insulated A/C ducting	S	S	S	Exterior wash station	P	P	P	* Dark tinted safety glass windows	P	P	P
Jumbo booth dinette	S	O	S	* 13,500 BTU ducted roof air conditioner	P	-	-	Glass shower enclosure	P	P	P	CSA upfit	O	O	O
Residential dinette with four chairs	O	O	S	15,000 BTU ducted roof air conditioner	O	P	P	EXTERIOR AND CONSTRUCTION				SAFETY AND SECURITY			
Swivel rocker lounge chairs (where applicable)	S	S	-	Wire and framing for 2nd air conditioner	-	O	O	* Flush floor main slideout rooms	S	S	S	LP leak alarm	S	S	S
Flexsteel® rocker recliner chairs (where applicable)	-	-	S	11,000 BTU bedroom air conditioner	-	O	O	Alumicage™ sidewalls and floor	S	S	S	Fire extinguisher	S	S	S
Laundry chute with basket (n/a 277DS)	S	S	S	Power bath vent	S	S	S	Fiberglass exterior sidewall material	S	S	S	Smoke detector	S	S	S
Fireplace (select models)	O	O	O	ELECTRICAL AND LIGHTING				High gloss exterior sidewall material	-	-	O	CO detector	S	S	S
				Upgraded interior lighting package	S	S	S	ABS front cap	-	-	-	Entrance door dead bolt lock	S	S	S
				GFI circuit	S	S	S	Fiberglass wrapped front	S	-	-	Break away emergency brake switch	S	S	S
				Outside receptacle GFI	S	S	S	Turn Rite front cap with hitch mirror	-	-	-	* Owner's information guide	O	O	O
				Patio light	S	S	S	Triple entry step	S	S	S	LITE = Lite Profile			
				* Hitch light	S	S	S	* Folding assist entry door handle	P	P	P	MP = Mid Profile			
				SureLine™ electrical harness	S	S	S	15" radial tires	S	S	S	HP = High Profile			
				55 amp electronic converter	S	S	S	16" radial tires	-	-	-	S = Standard			
				30 amp service	S	S	S	Chrome wheel covers	S	S	S	O = Optional			
				50 amp service	-	O	O	Aluminum wheels	-	O	-	P = Essential Package*			
				12 volt battery disconnect	S	S	S	Spare tire kit	P	P	P	*Essential package items are required options.			
				5.5 KW gas generator	-	-	O	Rear pull out bike rack	-	S	-				
				Lighted power range hood	P	P	-	Large easy access pass-through storage	S	S	S				
				Designer refrigerator door inserts	P	P	P	Extended hitch pin	S	S	S				



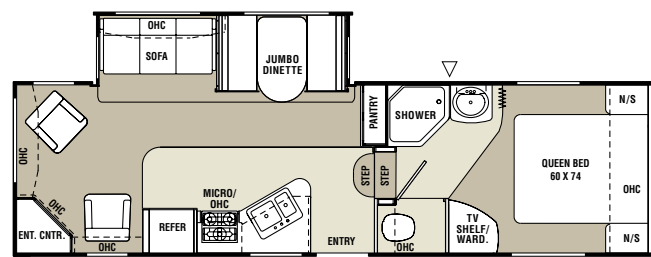
Lite Profile — 1/2 Ton Towable • Easy Living Floorplans



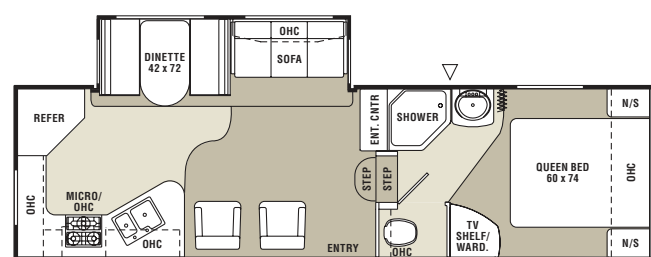
Mid Profile — 3/4 Ton Towable • Easy Living Floorplans



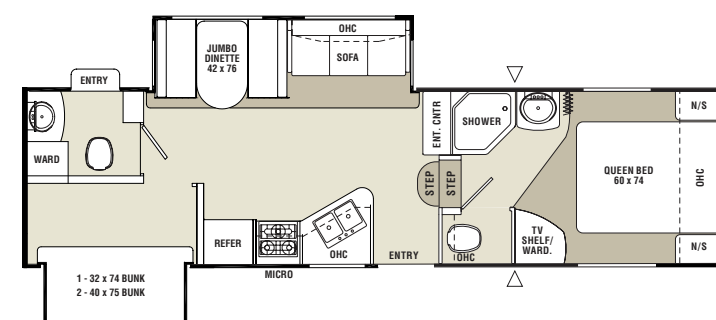
267RLS | Base Weight: 6,293 | Sleeps 6



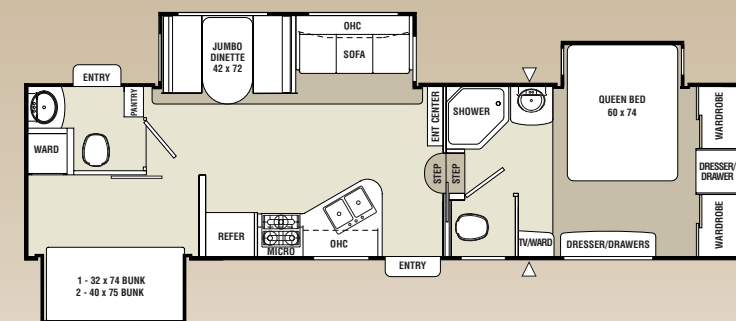
268RLE | Base Weight: 6,908 | Sleeps 6



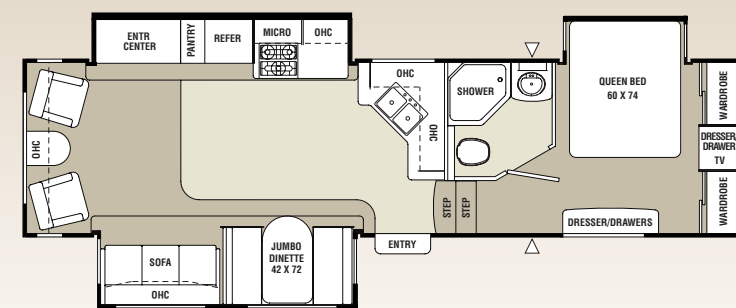
270RKS | Base Weight: 6,728 | Sleeps 6



298RBS | Base Weight: 8,267 | Sleeps 9



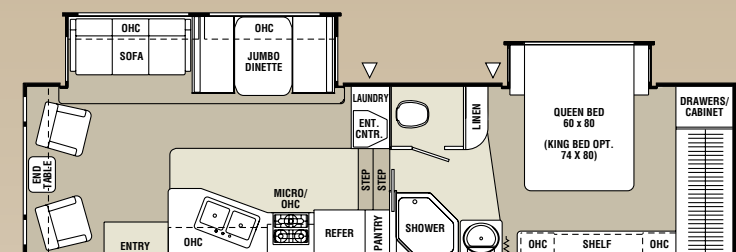
299TSB | Base Weight: 8,667† | Sleeps 9



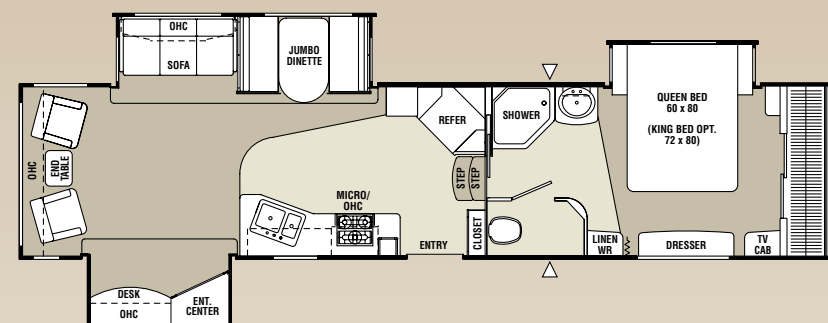
322RLTS | Base Weight: 9,000† | Sleeps 6



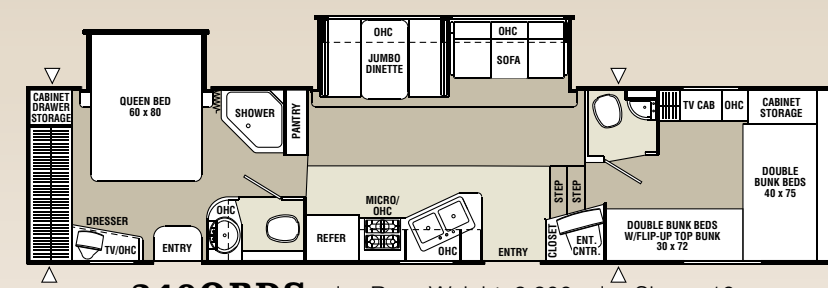
High Profile — 3/4 Ton Towable • Easy Living Floorplans



277DS | Base Weight: 8,300 | Sleeps 6



331RLTS | Base Weight: 9,924 | Sleeps 6



340QBDS | Base Weight: 9,200 | Sleeps 10

△ Outside Storage Location
■ Carpet
□ Linoleum



Chaparral

	Lite				Mid		High		
Specifications	267RLS	268RLE	270RKS	298RBS	299TSB	322RLTS	277DS	331RLTS	340QBDS
Base weight	6,293	6,908	6,728	8,267	8,667†	9,000†	8,300	9,924	9,200
Carrying capacity	2,733	2,285	2,393	2,380	2,380†	2,380†	2,600	1,988	2,502
Hitch weight	1,026	1,193	1,121	1,147	1,500†	1,702†	1,760	1,912	1,702
Interior height (coach)	6' 10"	6' 10"	6' 10"	6' 10"	6' 5"	6' 5"	7' 5"	7' 5"	8' 5"
Exterior height (includes A/C)	11' 11"	11' 11"	11' 11"	12' 1"	12'	12'	12' 11"	13'	12' 11"
Exterior length	28' 10"	30' 3"	30' 3"	32' 8"	34'	34'	32' 11"	37' 7"	36' 10"
Exterior width	8'	8'	8'	8'	8'	8'	8'	8'	8'
Awning length	18'	20'	20'	17'	14'	14'	16'	17'	17'
Sleeping capacity	6	6	6	9	9	6	6	6	10
Exterior storage capacity (cu. ft.)	45	45	45	45	45	45	120	90	62
Fresh water capacity (gal.)	40	40	40	40	47	47	40	40	40
Waste water capacity (gal.)	30	30	30	60	90	45	45	45	90
Gray water capacity (gal.)	30	60	60	60	90	90	45	90	45
Water heater capacity (gal.)	10	10	10	10	10	10	10	10	10
Tire size	15"	15"	15"	15"	15"	15"	16"	16"	16"

† = Estimated

Base weight: The weight of the unit with no fluids, cargo, optional equipment or accessories.

Carrying capacity: The amount of weight available for all fluids, cargo, optional equipment and accessories. The actual "loaded" weight will depend on the equipped unit and the owner's individual choice of cargo, etc.

EASY DESIGN



The fully enclosed underbelly and heated tanks help you to extend the camping season.



Large pass-through storage on all models makes it easy to take everything you need for fun.



The lift up queen bed storage area holds extra gear, whether you are traveling for a weekend, or a week.

Ask you dealer about these Coachmen exclusive design features.



SureLine custom wiring harness provides color coded wires grouped together in a protective autoloop covering. Specific wiring schematics make for easy serviceability.



Maximize your cooling efficiency with the **Even Cool™** air conditioning system. Insulated ductwork with radiused corners provide for smooth air flow.



Aircraft-grade aluminum-framed construction throughout the walls and floor provides a solid and lightweight superstructure for the Chaparral.

Quality Construction

1. Custom front cap (wrapped fiberglass front — Lite Models)
2. Powder coated I-beam chassis frame
3. Laminated aluminum framed sidewalls
4. Laminated aluminum framed floor
5. Rack and pinion slide room mechanism
6. Dark tint safety glass windows
7. One-piece rubber roof membrane with 12-year warranty
8. Crowned roof truss
9. Turn Rite short bed compliant front cap (mid profile only)
10. Cap mounted mirror (mid profile only)



R-Values
Roof (R-13.4)
Walls (R-11.1)
Floor (R-11.4)



Standard on high profile models.