



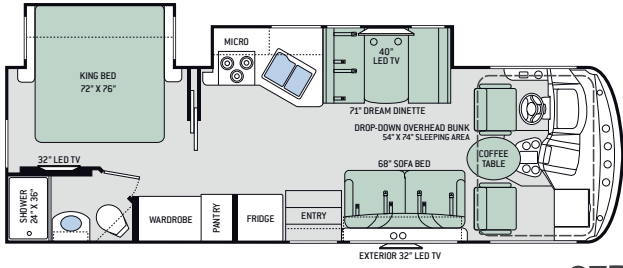
Made for Fit



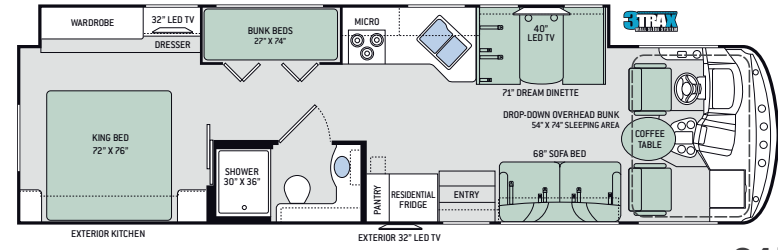
WINDSPORT[®]
BY THOR MOTOR COACH

If you're looking for good times with the kids, grandkids or great friends, get in a WindSport and have some fun!

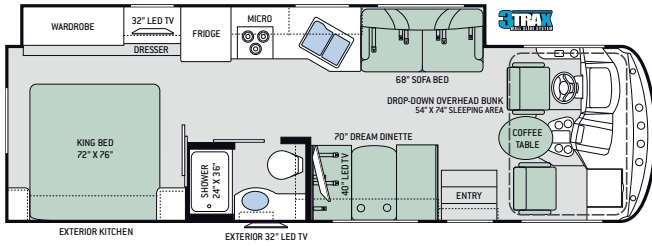
Floor Plans



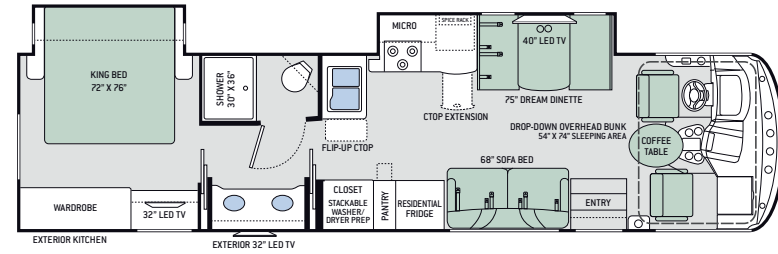
27B



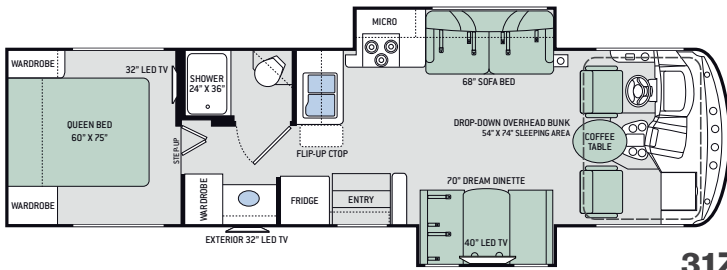
34J



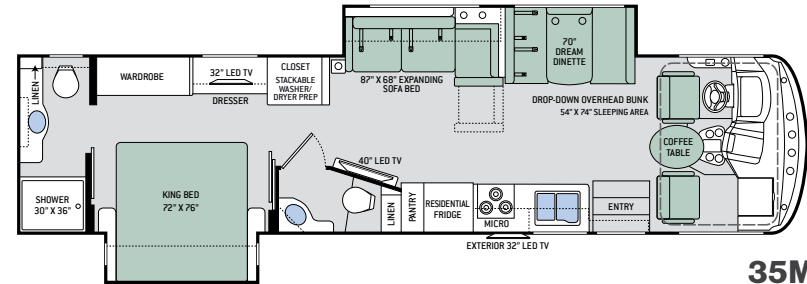
29M



34P



31Z



35M

Specifications

	27B	29M	31Z	34J	34P	35M
Chassis	Ford	Ford	Ford	Ford	Ford	Ford
Gross Vehicle (GVWR)	18,000	18,000	18,000	22,000	22,000	22,000
Gross Combined (GCWR)	23,000	23,000	23,000	26,000	26,000	26,000
Wheel Base	190"	190"	208"	242"	242"	242"
Exterior Length (w/o ladder)	29'-3"	30'-8"	32'-9"	35'-7"	36'	36'-9"
Exterior Height (w/ AC)	12'-2"	12'-2"	12'-2"	12'-2"	12'-2"	12'-2"
Exterior Width (w/o mirrors)	99"	99"	99"	99"	99"	99"
Interior Height (living area)	84"	84"	84"	84"	84"	84"
Awning Size	18'	18'	16'-6"	18'	20'	18'
Fuel (gal)	80	80	80	80	80	80
LPG (lbs)	88	88	88	88	88	88
Fresh Water (gal)	50	50	50	50	50	50
Waste Water (gal)	40	40	26	40	40	40F-39R
Gray Water (gal)	40	33	47	40	40	40F-39R
Water Heater (gal)	6	6	6	6	6	6
Furnace (BTUs)	35,000	35,000	35,000	35,000	35,000	35,000
Exterior Storage Capacity (cu. ft.)	73	64	143	116	105	112



3TRAX™ is our in-wall slideout system, housing all the moving and mechanical parts within the sidewall of the motorhome. This triple track design supports large rooms, like those found in full-wall slideouts, ensuring simple, reliable, maintenance-free operation. What sets 3TRAX™ apart is the patented rail system, in-floor roller guides and electric motor design. For more information, visit thormotorcoach.com/3TRAX.

Interior Decor



ETCHED NICKEL



FUSION GREY II



GOLDEN MINK II



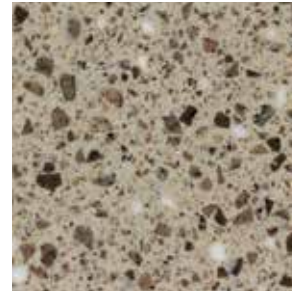
BRAZILIAN CHERRY



MALIBU MAPLE



RESIDENTIAL VINYL FLOORING



KITCHEN COUNTERTOP



DINETTE COUNTERTOP



BED & BATH
COUNTERTOP

Exterior Graphics



BAHAMA BREEZE



OCEANSIDE



DOCKSIDE PARTIAL-PAINT



WATERFRONT PARTIAL-PAINT



Thinking about buying a new coach? Have a question about one of our motorhomes? Trying to find a dealer near you?

Our Coach Link support team is here to help you in your purchase of a new motorhome! This dynamic team focuses directly on helping you find the answers you need to help get you behind the wheel of one of our great new motorhomes. Call: 800.860.5658 or visit us online: thormotorcoach.com

Features

CONSTRUCTION & EXTERIOR

- Ford® F-53 Chassis – 6.8L Triton® V10 Engine, 320HP, 460 lb.-ft. Torque – TorqShift® 6-Speed Automatic with Overdrive Transmission
- One-Piece Fiberglass Front & Rear Caps
- HD-MAX® Exterior with Graphics Package
- Exterior MEGA-Storage™ Compartment (31Z)
- Rotocast Storage Compartments
- Side-Hinged Flush Mount Radius Compartment Doors (In Select Areas)
- Automatic Leveling Jacks with Touchpad Controls
- Power Patio Awning with Integrated LED Lighting
- 3TRAX® Wall Slide System (29M & 34J)
- Pet-Link™ Multi-Purpose Tie-Down
- Electric Entry Step
- Roof Ladder
- Frameless Windows
- 8,000-lb. Trailer Hitch with 7-pin Round Connector

CONSTRUCTION & EXTERIOR OPTIONS

- Partial Paint on HD-MAX® Exterior with Graphics Package
- Frameless Dual Pane Windows

AUTOMOTIVE & COCKPIT

- Touchscreen Dash Radio with Bluetooth®
- Back-Up Monitor
- Heated/Remote Exterior Mirrors with Integrated Side View Cameras
- Reclining/Swivel Leatherette Captain's Chairs with Stow-Away Coffee Table
- Power Driver's Seat
- Emergency Engine Start Switch
- Power Privacy Shade on Windshield
- Dash Workstation with 110-volt & 12-volt Outlets

- 19.5" Tires with Stainless Steel Wheel Liners
- Valve Stem Extenders on Rear Wheels
- Power Drop-Down Hide-Away Overhead Bunk with Cotton Cloud™ Mattress & Bunk Ladder

INTERIOR

- Rubber Tread Entry Steps with Lighted Step Well
- Residential Vinyl Flooring
- 84" Interior Ceiling Height
- LED Lighting
- Ceiling Ducted Air Conditioning System
- Raised Panel Upper Cabinet Doors with Nickel Finish Hardware & Glass Inserts on Select Doors
- Dream Dinette® Booth
- Leatherette Sofa Bed (N/A 35M)
- Leatherette Expanding Sofa (35M)
- Window Privacy Shades

KITCHEN

- Double Door Refrigerator (27B, 29M & 31Z)
- 11 cu. ft. Residential Refrigerator with Ice Maker (34J, 34P & 35M)
- 3-Burner Gas Cooktop/Oven with Bi-Fold Glass Cover
- 30" Over-the-Range Microwave Oven
- Decorative Glass & Tile Backsplash
- Solid Surface Countertops & Laminate Dinette Countertop
- Large Double Bowl Sink with Single Handle Faucet & Pull-Down Sprayer
- Countertop Extension (34P)
- Flip-Up Countertop Extension (31Z & 34P)
- Pantry (27B, 34J, 34P & 35M)
- 12-volt Attic Fan with Cover

BEDROOM & BATHROOM

- Denver Mattress® King Size Bed (27B, 29M, 34J, 34P & 35M)
- Denver Mattress® Queen Size Bed (31Z)
- Designer Headboard, Bedsread & Pillow Shams
- Bunk Beds in Hallway Slideout (34J)
- Foot Flush Porcelain Toilet
- Shower with Glass Door

BEDROOM & BATHROOM OPTION

- 12-volt Attic Fan with Cover in Bedroom (29M & 31Z – N/A when Dual 13,500 BTU Roof Air Conditioners is Optioned)

ENTERTAINMENT

- 40" LED TV in Living Area
- Blu-Ray Player in Living Area
- 15.5" & 24" LED TVs & DVD Player in Bunk Bed Area (34J)
- 32" LED TV in Bedroom
- Exterior 32" LED TV on Manual Swivel
- Speakers in Sofa Overhead
- Cable TV & HDMI Ready
- Digital TV Antenna
- Bluetooth® Coach Radio System in Bedroom with Exterior Speakers
- Power Charging Center for Electronics
- Exterior Kitchen with 2.6 cu. ft. Refrigerator & Sink (29M, 34J & 34P)

ELECTRICAL & PLUMBING

- Onan® RV QG 4000 Gas Generator (27B, 29M & 31Z)
- 30-amp Detachable Shoreline Power Cord (27B, 29M, & 31Z)
- 15,000 BTU Front Roof Air Conditioner (27B, 29M & 31Z)

- 50-amp Detachable Shoreline Power Cord, Dual 13,500 BTU Roof Air Conditioners, and Onan® RV QG 5500 Gas Generator (34J, 34P & 35M)
- Pre-wired for Solar Charging
- Exterior LP Connection
- Second Auxiliary House Battery
- Battery Tray that Holds up to Four Batteries (34J, 34P & 35M)
- 1000-watt Inverter (27B, 29M & 31Z)
- 1800-watt Inverter (34J, 34P & 35M)
- Automatic Generator Start (34J, 34P & 35M)
- Battery Disconnect Switch
- 6-gallon DSI Gas/Electric Water Heater
- Water Heater Bypass System
- Enclosed & Heated Holding Tanks (N/A 29M)
- Enclosed Holding Tanks with Heat Pads (29M)
- Black Tank Flush System
- Stackable Washer/Dryer Prep (34P & 35M)
- Outside Shower
- Systems Control Center
- Rapid Camp® Wireless Control System

ELECTRICAL & PLUMBING OPTION

- 50-amp Detachable Shoreline Power Cord, Dual 13,500 BTU Roof Air Conditioners, and Onan® RV QG 5500 Gas Generator (29M & 31Z – 12-volt Attic Fan in Bedroom N/A)

IMPORTANT—PLEASE READ: This brochure reflects product design, fabrication, material, components and specifications at the date of printing, which date is disclosed below. **Please visit us online at ThorMotorCoach.com or consult with your selling dealership for the latest in standards, options, specification and technical information.** Photographs in the brochure may depict optional equipment or may only be available in certain floor plans. Components, appliances and the chassis may have been manufactured in a calendar year before the vehicle's designated model year. All capacities are approximate. The actual length of the vehicle may differ from that indicated in the brochure due to variances in the manufacturing processes and/or installed components. All dry weights are based on standard model features and do not include optional features or equipment. Component part and appliance manufacturers issue limited warranties covering portions of the vehicle not covered under the limited warranty we issue. Copyright Thor Motor Coach, Inc. © OH 09/18/17

YOUR LOCAL THOR MOTOR COACH DEALER



Made to fit.



thormotorcoach.com/windspport

P.O. Box 1486, Elkhart, IN 46515 Sales Department: 800.860.5658 Customer Service: 877.855.2867