

# Coachmen®



**EXCITING NEW  
FLOORPLANS  
AND FEATURES**

**CATALINA TOWABLES - ALWAYS  
OUTSTANDING SELECTION AND VALUE**

**TWO-YEAR  
STRUCTURAL  
WARRANTY**

**FREE!  
OWNER'S CLUB  
MEMBERSHIP &  
BENEFITS!**





# CHOOSE CATALINA FOR THE

## BEWARE OF COPY CATS!

Catalina Travel Trailer and Fifth Wheels combine the best quality, comfort and value available today. They are designed and manufactured with long term reliability and livability in mind. Many brands may be similar in appearance but most will not hold up to the scrutiny of a closer look.

Coachmen products feature definite construction and material differences that others may not offer. Differences that will affect your long term satisfaction and even resale value.

This brochure is loaded with important information that explains why Coachmen is the absolute best RV value.



*There is plenty of room to relax or entertain in the 251 RL fifth wheel. Copper Canyon is the featured decor.*

## BEAUTY AND A LOT MORE!

As you step into a 1997 Catalina Trailer or Fifth Wheel, your first impression is of pleasing beauty and soothing comfort.

Our designers work diligently to insure lasting appeal, because at Coachmen we believe that beauty should be "more than skin-deep."

Here are some of the differences that set Coachmen interiors apart from other brands:

- Coachmen selects only upholstery fabrics that are wear-dated as "Heavy Duty." This means that Coachmen fabrics have been tested for durability beyond 15,000 double rubs (in and out action) to simulate heavy usage. To put this in perspective, a chair in the average American home is typically subjected to 3,000 double rubs per year.



*Enjoy the residential spaciousness of the popular 338 FL travel trailer. Pictured in Silver Aspen.*



# ABSOLUTE BEST RV VALUE



*ABOVE: You can count on pleasant surroundings and an excellent night's sleep in Catalina bedrooms, which feature deluxe inner spring mattresses. Bedroom shown in Blue Cascade.*

*LEFT: Our 278 RK fifth wheel offers tremendous livability with the large slide room, gourmet galley and panoramic windows. Shown in Blue Cascade.*

- Beneath its heavy duty fabrics, Coachmen uses high density foam in its furniture and cushions to protect against premature compression and breakdown. And, dinette cushions are backed with durable, waterproof vinyl.

- Coachmen uses only man-made continuous filament fiber carpeting that is Teflon treated for easy cleaning. For long term wear, the carpet padding is equally important. Coachmen uses a 3/8" pad that is 70% denser than the industry standard, with an 80 lb. ILD (Indentation Load Deflection) versus the 33 lb. ILD most commonly used.

- The Catalina cabinet doors feature hardwood frames in a Golden Cherry finish. Unlike other brands, Coachmen's cabinet fronts are solidly screwed and secured to reinforced sidewalls.

- Window sizes and configurations are chosen with care, to give you enormous panoramic views in the living areas and important ventilation

in the sleeping areas with multi pane jalousie windows.

- Window treatments are designed for beauty, flexibility of lighting and ventilation, and, most of all, privacy.

The Catalina features non-flammable adjustable mini-blinds throughout.



## Decor Selections:



Blue Cascade

Silver Aspen

Copper Canyon



# FEATURES GALORE!

A complete photo album would be required to fully display the many features and innovations of Catalina travel trailers and fifth wheels. Here are just a few of the many features available from Coachmen.



▲ Catalina roofs are covered with a seamless rubber skin and feature tapered rafters for superior water runoff and leak prevention.



▲ Slide-out models provide both 12 volt and 110 volt lighting. ►



▲ Floor-ducted heat system provides balanced heat distribution. The duct system itself is sealed and insulated to avoid an inefficient loss of heat.

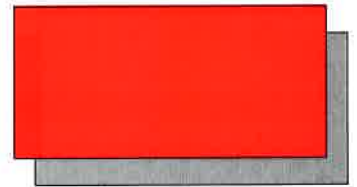


◀ Coachmen pays special attention to bathrooms, for adequate room around the toilet, counter space and linen storage. All models feature a molded tub/shower wall liner, double sealed to protect against water damage.

Coachmen's optional ducted roof air conditioning system is the best of it's kind. Every angle, seal and vent has been carefully designed for maximum cooling with minimum condensation ▼



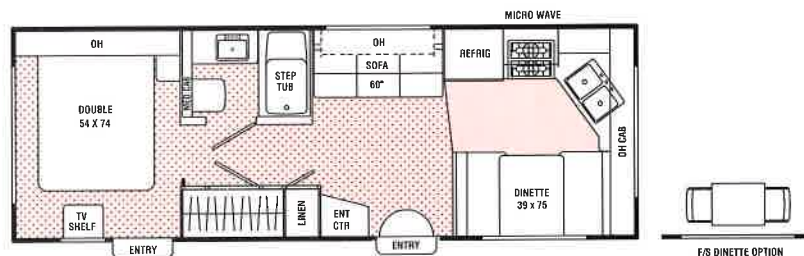
# FLOORPLANS & TECHNICAL SPECIFICATIONS



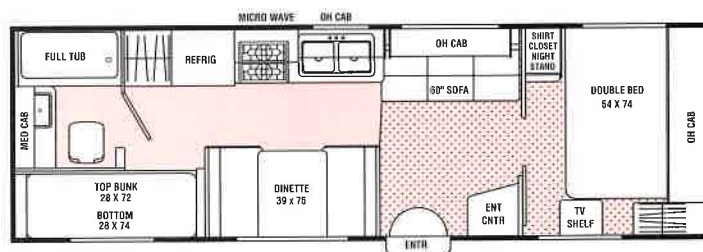
## 1997 CATALINA TRAVEL TRAILERS & FIFTH WHEELS

### CATALINA TRAVEL TRAILER FLOORPLANS

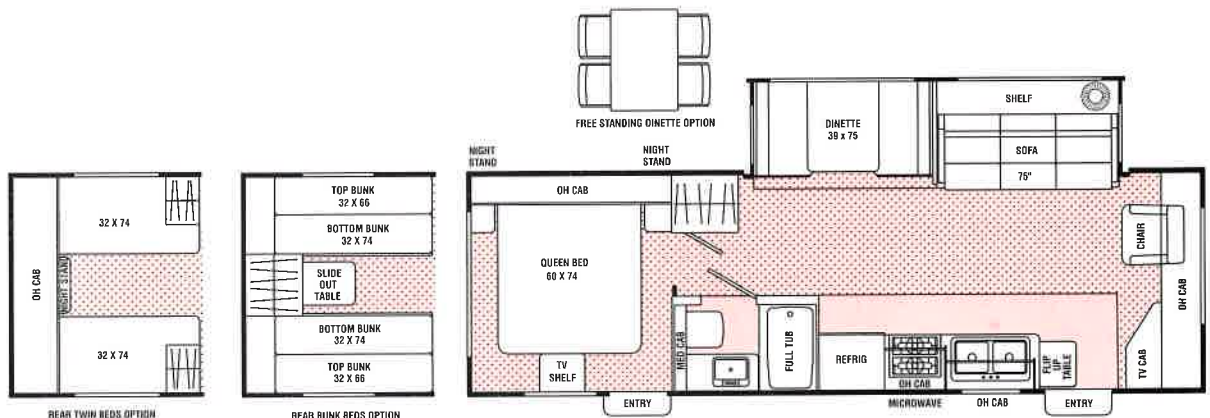
**271<sup>FK</sup>**  
FRONT KITCHEN  
WIDE BODY  
UVW 4954 LBS.



**275<sup>TB</sup>**  
TWO BEDROOM  
UVW 4863 LBS.



**286<sup>FL</sup>**  
FRONT LIVING  
UVW 6462 LBS.



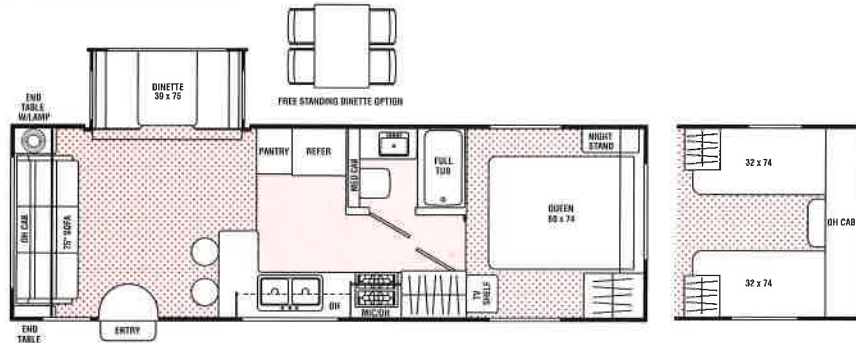
Indicates Carpeting



# CATALINA TRAVEL TRAILER FLOORPLANS

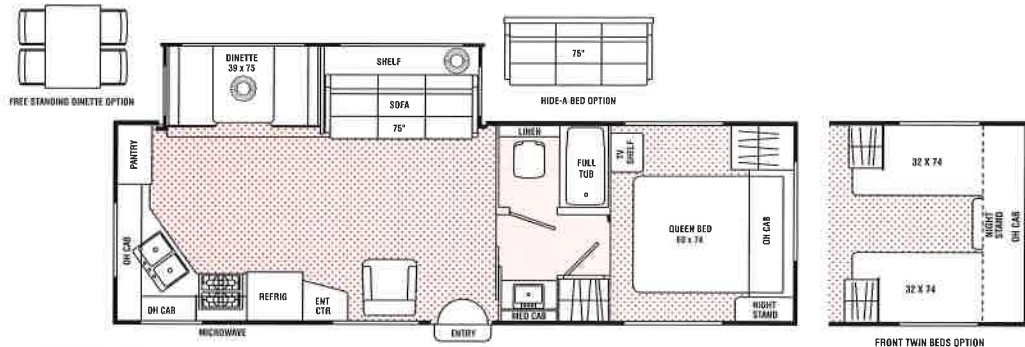
## 296<sup>RL</sup>

REAR LOUNGE  
WIDE BODY  
UVW 6486 LBS.



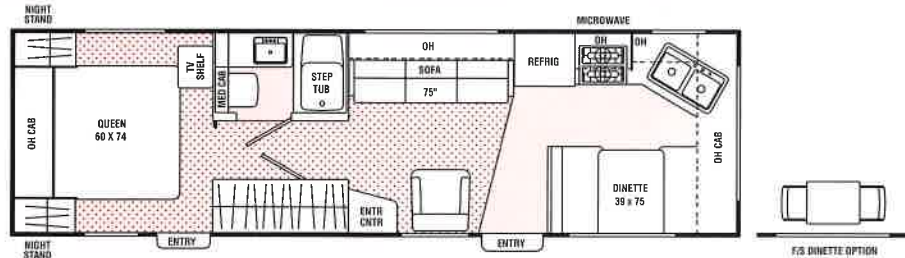
## 297<sup>RK</sup>

REAR KITCHEN  
WIDE BODY  
UVW 7202 LBS.



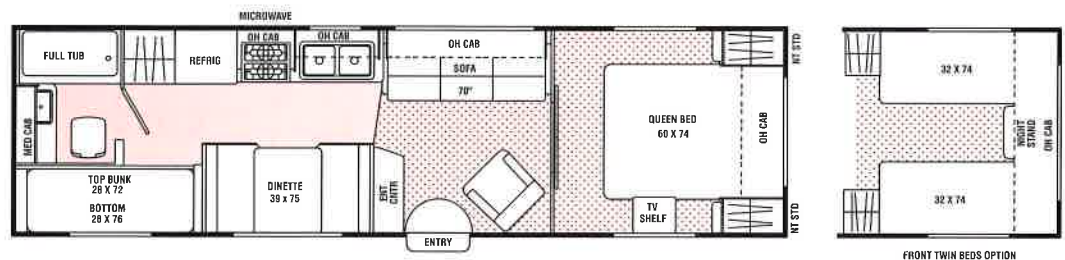
## 298<sup>FK</sup>

FRONT KITCHEN  
UVW 5244 LBS.



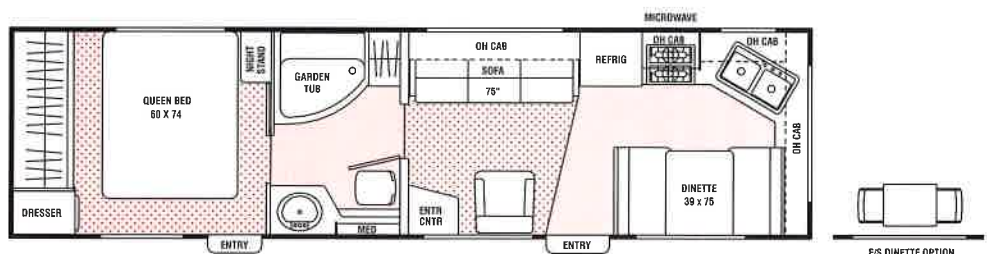
## 299<sup>TB</sup>

TWO BEDROOM  
UVW 5252 LBS.



## 310<sup>WB</sup>

WALK THRU BATH  
UVW 5335 LBS. EST.

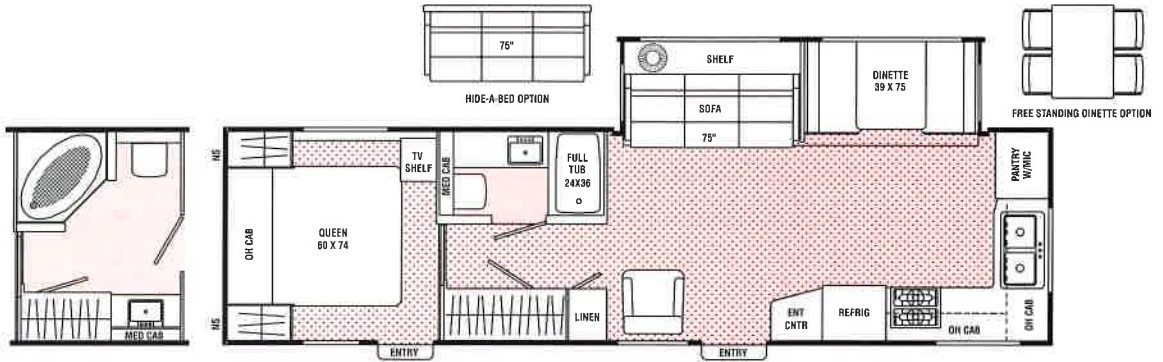


Indicates Carpeting

# CATALINA TRAVEL TRAILER FLOORPLANS

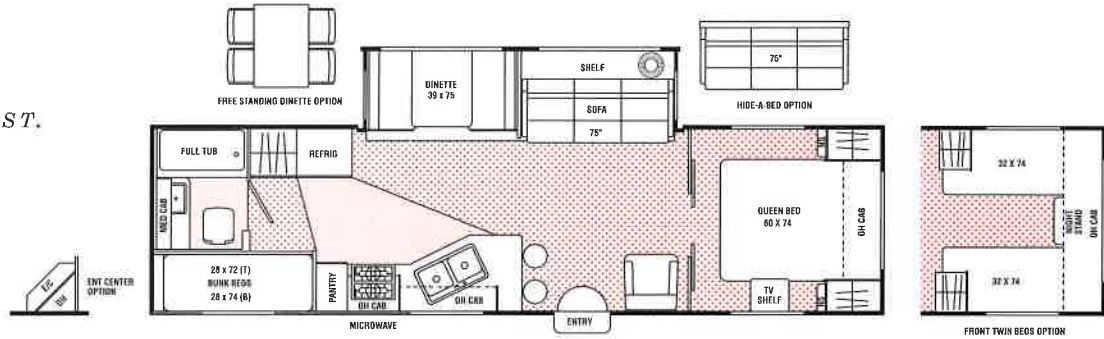
## 324<sup>FK</sup>

FRONT KITCHEN  
UVW 7000 LBS. EST.



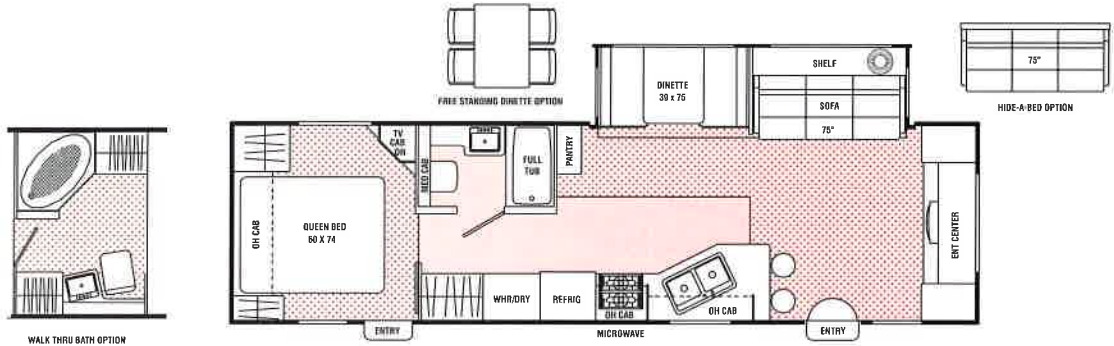
## 330<sup>TB</sup>

TWO BEDROOM  
UVW 7205 LBS. EST.



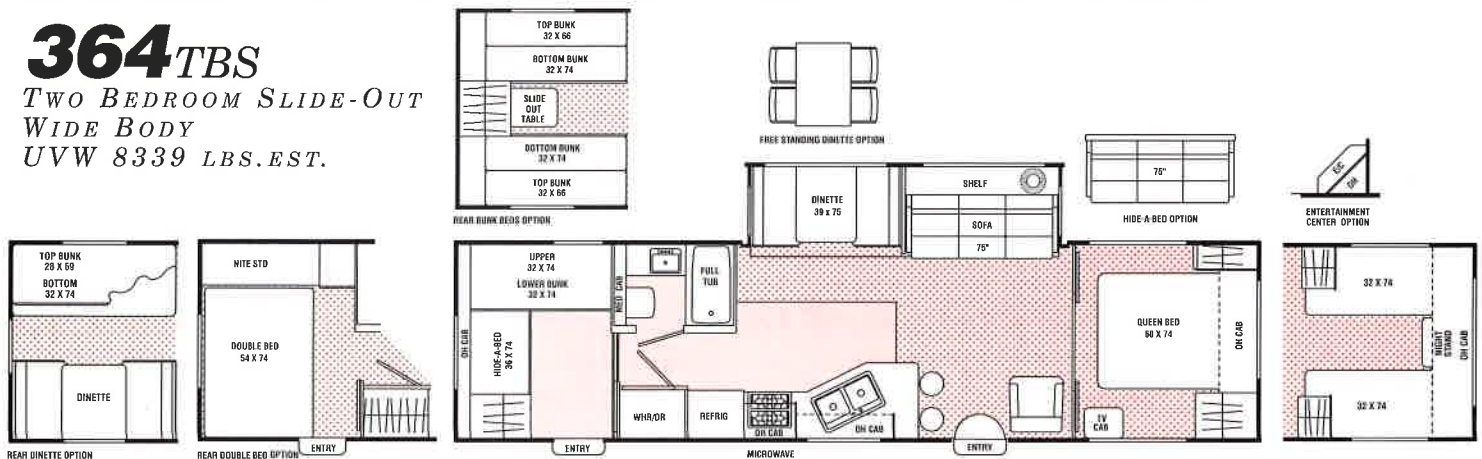
## 338<sup>FL</sup>

FRONT LOUNGE  
WIDE BODY  
UVW 7871 LBS. EST.



## 364<sup>TBS</sup>

TWO BEDROOM SLIDE-OUT  
WIDE BODY  
UVW 8339 LBS. EST.





# CATALINA TRAVEL TRAILER SPECIFICATIONS

	271 FK	275TB	286FL	296RL	297RK	298FK	299TB	310WB	324FK	330TB	338FL	364TB
<b>UVW</b>	<b>4954</b>	<b>4,863</b>	<b>6,462</b>	<b>6,486</b>	<b>7,202</b>	<b>5,244</b>	<b>5,252</b>	<b>5,335@</b>	<b>7,000@</b>	<b>7,205@</b>	<b>7,871@</b>	<b>8,339@</b>
GVWR	7,720	7,670	8,940	9,070	9,080	7,840	7,600	7,600@	10,000@	10,000@	10,000@	10,000@
Carrying Capacity	2,766	2,807	2,478	2,584	1,878	2,596	2,348	2,265@	3,000@	2,795@	2,129@	1,661@
Hitch Weight	720	670	940	1,070	1,080	840	740	850@	1,000@	1,050@	1,200@	1,100@
Axle Weight	4,234	4,193	5,822	5,416	5,042	4,404	4,512	4,485@	6,000@	6,155@	6,671@	7,239@
Interior Height	6'6"	6'6"	6'10"	6'10"	6'10"	6'6"	6'6"	6'6"	6'10"	6'10"	6'10"	6'10"
Exterior Height*	8'11"	8'11"	8'11"	8'11"	8'11"	8'11"	8'11"	8'11"	9'9"	9'9"	9'9"	9'9"
Exterior Length	27'1"	28'3"	28'6"	29'6"	30'8"	30'5"	31'6"	32'5"	32'4"	33'	33'8"	35'10"
Exterior Width	8'5"	7'10"	9'3½"	7'10"	8'5"	7'10"	7'10"	7'10"	7'10"	7'10"	8'5"	8'5"
Hitch Pin Height†	18"	19"	20"	19"	19"	20"	20"	20"	20"	20"	20"	20"
Sleeping Capacity—Std/Opt	6/4	8/6	6/4	6/4	6/4	6/4	8/8	6/6	6/4	8/6	6/4	9/10
Fresh Water Capacity (gal.)	40	30	30	30	30	30	30	30	30	36	30	30
Waste Water Capacity (gal.)	42	40	42	42	40	42	40	32	40	40	40	40
Grey Water Capacity (gal.)	32	32	32	42	42	32	32	32	32	32	42	42
Water Heater Capacity	6	6	6	6	6	6	6	6	6	6	6	6
LP Gas Capacity (lb.)	60	60	60	60	60	60	60	60	60	60	60	60
Furnace Rating (x 1000) BTU	31	31	31	31	31	31	31	31	35	35	35	40
Tire Size	□	□	○	○	○	□	□	□	◇	◇	◇	◇

\* Add 14" for Roof Air Conditioner    @ = Estimated at time of printing    □ = ST205/75R15C    ○ = ST225/75R15C    ◇ = ST225/75R15D

**UVW (Unloaded Vehicle Weight):** The weight of the unit with no fluids, cargo, optional equipment or accessories

**GVWR (Gross Vehicle Weight Rating):** The maximum permissible weight of the unit, including the UVW plus all fluids, cargo, optional equipment and accessories. For safety and product performance, do not exceed the GVWR.

**Carrying Capacity:** The difference between the UVW and the GVWR. This is the amount of weight available for all fluids, cargo, optional equipment and accessories. The actual "loaded" weight will depend on the equipped unit and the owner's individual choice of cargo, etc.

**Wider Widths:** Numerous Coachmen floorplans feature the "wide body" design concept, which gives you significantly enhanced interior living space and innovative floorplans.

In making your purchase decision, you should be aware that a few states restrict access on some or all state

roads to 96" in width, though special road usage permits are generally available. Vehicles up to 102" in width are permitted on all federal highways, and in the vast majority of states. You may wish to confirm the road usage laws in the states of interest to you before making your purchase decision. If width is of concern to you, we invite you to consider the broad array of other Coachmen models offered in the standard 96" width.

All information contained in this brochure is believed to be accurate at the time of publication. However, during the model year, it may be necessary to make revisions and Coachmen reserves the right to make all such changes without notice, including changes in prices, colors, materials, equipment and specifications, as well as the addition of new models and the discontinuance of models shown in this brochure. Therefore, please consult with your Coachmen dealer and confirm the existence of any materials, design or specifications that are material to your purchase decision.

## STANDARD FEATURES

### INTERIOR AND DECOR

- Golden Cherry Cabinets
- Residential Metal Drawer Glides
- Partial Carpet with Pad
- Linoleum Flooring - Kitchen & Bath
- Mini Blinds - Coach
- Mini Blinds - Bedroom (Except w/Bunks)
- Radius Windows
- Home Entertainment Cabinet (338 Only)
- Side Dinette
- Jack Knife Sofa
- Swivel Rocker (Except 271RL, 275TB, 296RL)
- Four Prewired Stereo Speakers
- Cable TV Jack
- TV Antenna and Rotor Package
- TV Shelf - Bedroom
- LP Leak Alarm

### GALLEY

- Microwave Ready
- 3-Burner (High Output) Range with Oven
- Power/Lighted Range Hood
- Flush Mount, Double Door Refrigerator
- Monitor Panel
- Stainless Steel Sink
- Silverware Drawer

### SLEEPING

- Queen Bed (286FL thru 364TBS)
- Double Bed (271FK, 275TB)
- Bunk Beds (286, 364)

- Deluxe Innerspring Mattress-312 Coil
- Bedsprad and Pillow Shams
- Bedlift System on Island DB or QB

### BATH AND WATER

- Marine Toilet
- Power Bath Vent
- One-Piece ABS Tub Surround
- 6-Gallon Water Heater
- Water Heater By-Pass Valve
- Demand Water Pump
- Decorative Bath Hardware
- Medicine Cabinet

### ELECTRICAL/HEATING/AIR CONDITIONING

- Outside Receptacle GFI
- Patio Light
- Off Door Side Utility Light
- LP Light
- Double 30 LB LP Bottles w/Auto Change-Over
- 31,000 BTU E.I. Furnace (271FK thru 310WB)
- 35,000 BTU E.I. Furnace (324FKS thru 338FLS)
- 40,000 BTU E.I. Furnace (364TBS)
- In-Floor Ducted Heat
- Prewired for Roof Air Conditioning

### EXTERIOR/CONSTRUCTION

- Rubber Roof
- Fiberglass Insulation
- Gutter Rail
- Rear Hose Storage Steel Bumper
- Double Entry Step - Primary Door (271, 275, 298, 299, 310)
- Triple Entry Steps at Primary Door (286, 296, 297, 324, 330, 338, 364)

- Dead Bolt Lock(s)
- Secondary Entrance Door (Except 275, 296, 297, 299, 330)
- Hydraulic Slide-Out Room (All Slide Models Except 296)
- Pre-Wired for Electric Slide Room (296)
- Manual Slide Room (296)
- Retractable Stabilizer Jacks (STD on Slide Models)
- Straight Axles(STD on Slide Models)
- Radial Tires
- Rally Wheels
- 30" Wide Entrance Door

## OPTIONAL FEATURES

- Rear Double Bed (364TBS)
- Twin Beds (286FL, 296RL, 297RK, 299TB, 330TBS, 364TBS)
- Bunk Beds (286FLS, 364TBS)
- Two Bar Stools (296RL, 338FLS, 330TBS, 364TBS)
- Free-Standing Dinette w/4 Chairs (286, 296, 297, 324, 330, 338, 364)
- Free-Standing Dinette (271FK, 298FK, 310WB) (Includes 2 Chairs)
- Deluxe Sofa w/Hide-a-bed (286, 324, 330, 338, 364)
- Rear Dinette with Rear Door (364TBS)
- Entertainment Center (330, 364)(Replaces Swvl. Rocker)
- Residential AM/FM Cassette Stereo
- Outside Entertainment Center
- Combo: Washer and Dryer (338FLS, 364TBS) (Includes Plumbing and 10 Gallon Gas/Electric E.I. Water Heater)
- Large, Flush Mount, Double Door Refer. (286FL Thru 364TBS)

- Residential Size Microwave Oven - 1.3 Cubic Foot
- 6-Gallon E.I. Water Heater
- 6-Gallon E.I. Gas/Elec. Water Heater
- Walk-Thru Bath (324FKS, 338FLS)
- Outside Shower
- Foam Core Insulation Package
- Tinted Safety Glass - Radius Windows (Safety Glass is Mandatory in Certain States)
- Ducted Roof Air Conditioning
- 2nd 13,500 BTU Roof Air Conditioner (299TB & Up)
- Wire and Frame 2nd Air Conditioner (299 and Up) (Mandatory w/Ducted Roof A/C on 338FLS, 350TB & 364TBS)
- 50 Amp. Service (299 & Up) (Mandatory with 2nd Roof A/C and Wire Frame from 2nd A/C Options)
- Electric Slide-Out Room (296)
- LP Bottle Cover
- Power Hitch Jack (280RK thru 364TBS)
- Spare Tire Kit (271FK Thru 324FK)
- Spare Tire Kit (330TB & Up)
- Retractable Stabilizer Jacks (Non-Slide Models)
- Straight Axle (Non-Slide Models) (Not available on Wide-Body Units Shipped to Canada)
- Awning
- Slide-Out Room Awning (All Slide Models)
- CSA Upfit



# CATALINA FIFTH WHEEL FLOORPLANS



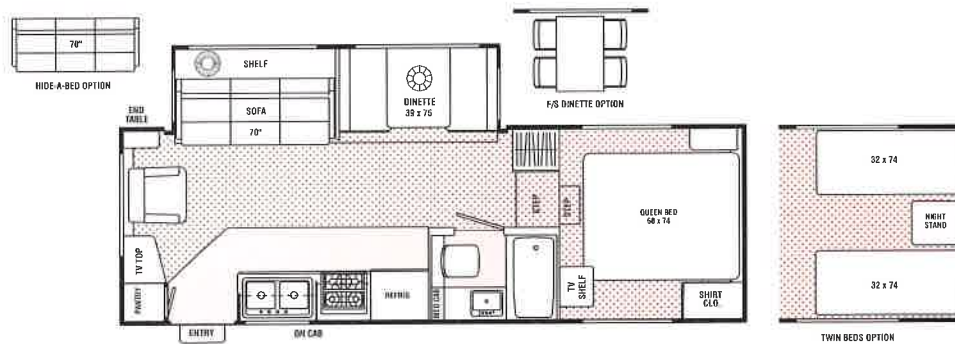
## 237RLS

REAR LOUNGE  
WIDE BODY  
UVW 5818 LBS.



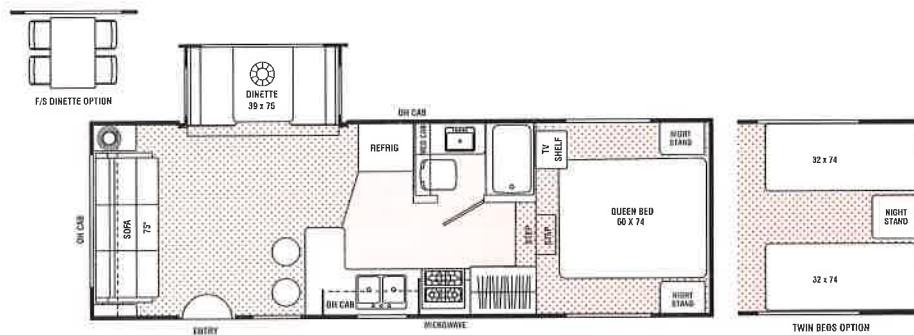
## 251RLS

REAR LOUNGE  
UVW 6594 LBS.



## 269RLS

REAR LOUNGE  
WIDE BODY  
UVW 6287 LBS. EST.



## 275RK

REAR KITCHEN  
UVW 5712 LBS. EST.

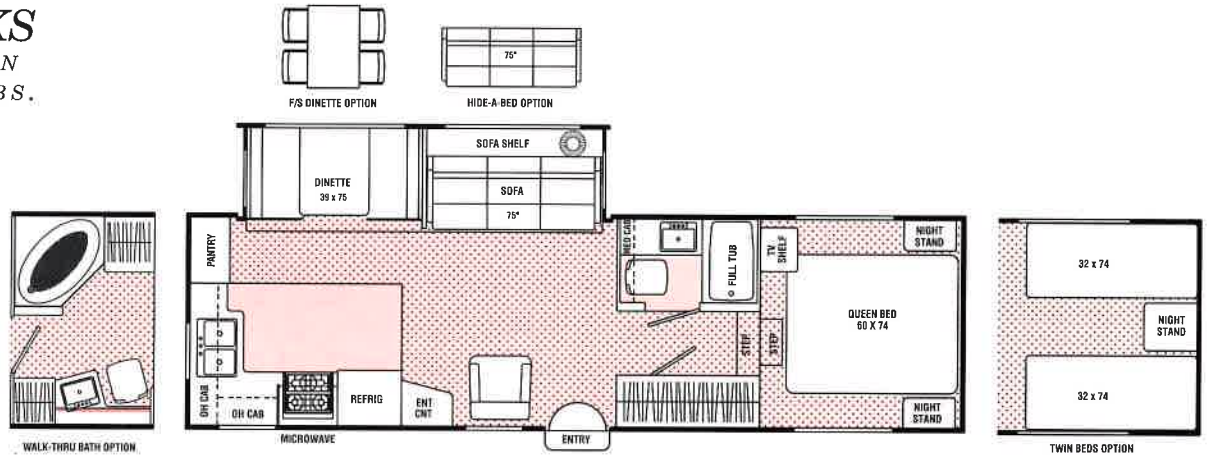


 Indicates Carpeting

# CATALINA FIFTH WHEEL FLOORPLANS

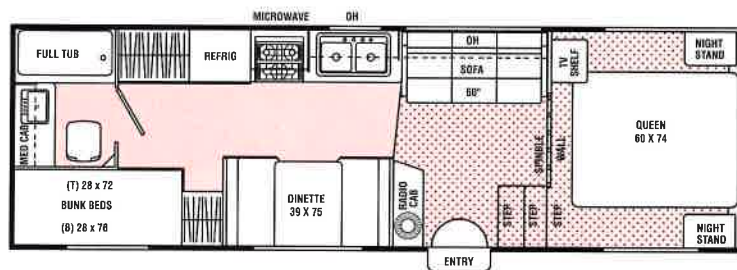
## 278RKS

REAR KITCHEN  
UVW 7170 LBS.



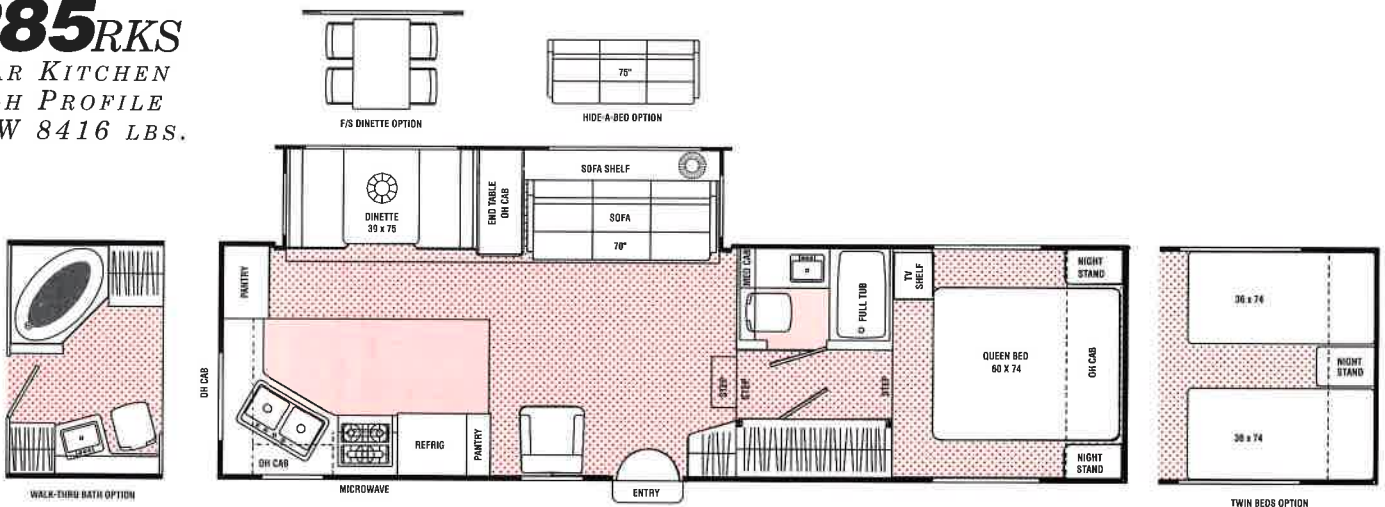
## 279TB

TWO BEDROOM  
WIDE BODY  
UVW 5814 LBS. EST.



## 285RKS

REAR KITCHEN  
HIGH PROFILE  
UVW 8416 LBS.



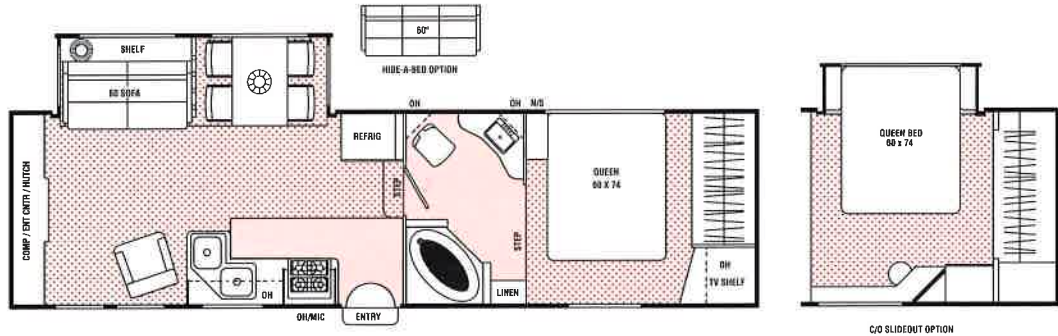
 Indicates Carpeting



# CATALINA FIFTH WHEEL FLOORPLANS

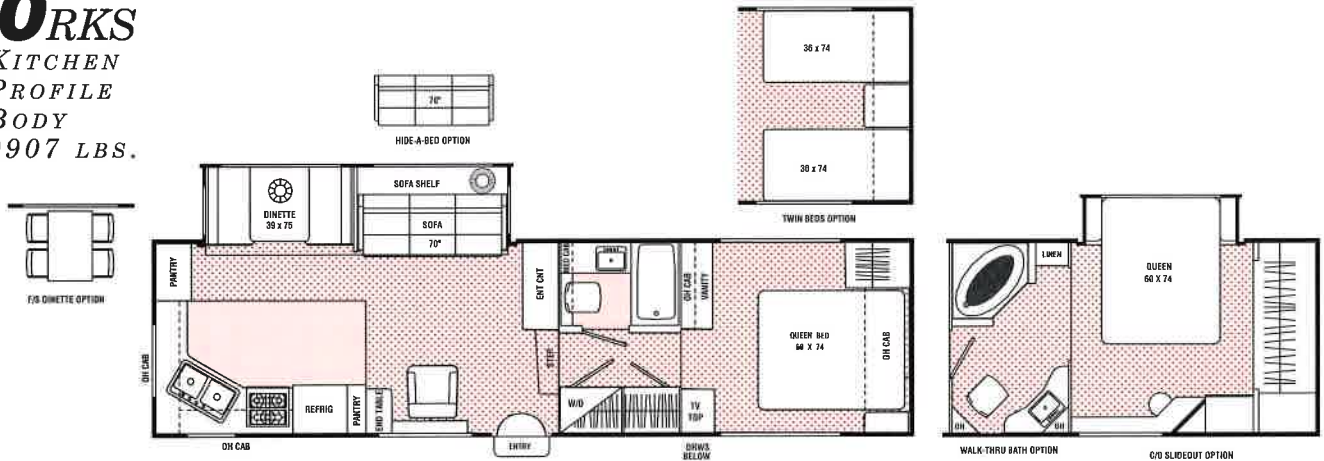
## 319RLS

REAR LOUNGE  
HIGH PROFILE  
WIDE BODY  
UVW 9141 LBS.



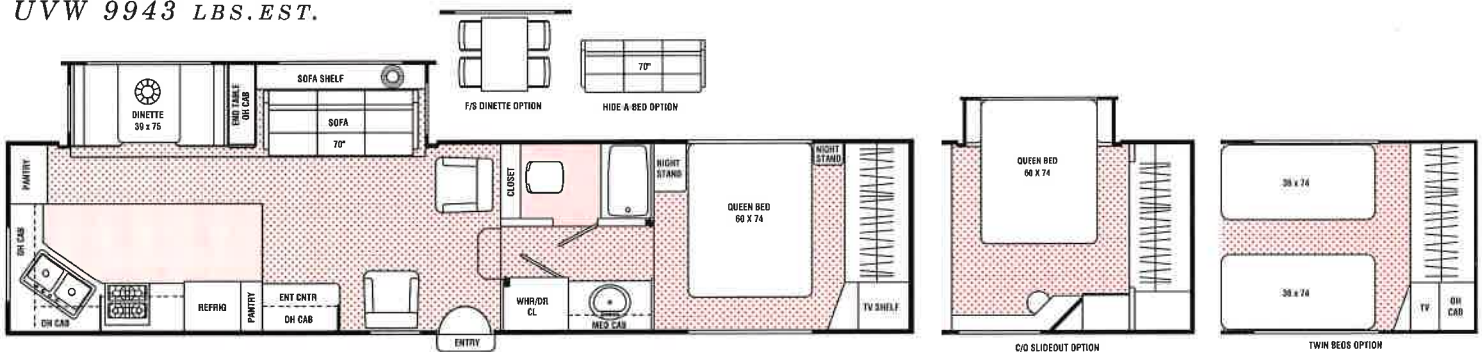
## 320RKS

REAR KITCHEN  
HIGH PROFILE  
WIDE BODY  
UVW 9907 LBS.



## 360RKS

REAR KITCHEN  
UVW 9943 LBS. EST.



# CATALINA FIFTH WHEEL SPECIFICATIONS

	237 RL	251 RL	269 RL	275 RK	278RK	279 TB	285 RK	319 RL	320 RK	360RW
<b>UVW</b>	<b>5818</b>	<b>6,594</b>	<b>6,287@</b>	<b>5,712@</b>	<b>7,170</b>	<b>5,814@</b>	<b>8,416</b>	<b>9,141</b>	<b>9,907</b>	<b>9,943@</b>
GVWR	6,920	9,270	9,240@	8,070@	9,400	8,280@	11,760	14,450	14,220	13,970@
Carrying Capacity	1,102	2,676	2,953@	2,358@	2,230	2,466@	3,344	5,309	4,313	4,027@
Hitch Weight	1,000	1,270	1,240@	1,070@	1,400	1,280@	1,760	2,450	2,220	1,970@
Axle Weight	4,818	5,324	5,047@	4,642@	5,770	4,534@	6,656	6,691	7,687	7,973@
Interior Height	6'10"	6'10"	6'10"	6'10"	6'10"	6'10"	6'10"	6'10"	6'10"	6'10"
Exterior Height*	10'9"	10'9"	10'9"	10'9"	10'9"	10'9"	12'2"	10'9"	10'9"	10'9"
Exterior Length	23'7"	24'8"	26'10"	27'11"	28'3"	27'8"	29'11"	31'6"	32'6"	36'10"
Exterior Width	8'5"	7'10"	8'5"	7'10"	7'10"	8'5"	7'10"	8'5"	8'5"	7'10"
Hitch Pin Height	45	45	45	45	45	45	45	45	45	45
Sleeping Capacity	6/4	6	6/4	6/4	6/4	6	6/4	4/6	6/0	6/4
Fresh Water Capacity (gal.)	30	42	30	30	42	30	53	53	40	53
Waste Water Capacity (gal.)	42	40	42	40	42	40	48	48	48	48
Grey Water Capacity (gal.)	42	42	42	40	42	32	48	48	48	48
Water Heater Capacity	6	6	6	6	6	6	6	6	6	6
LP Gas Capacity (lb.)	60	60	60	60	60	60	60	60	60	60
Furnace Rating (x 1000) BTU	25	25	31	31	31	31	31	31	35	40
Tire Size	△	●	○	○	●	○	X	□	□	□

\* Add 10" for Roof Air Conditioner @ = Estimated at time of printing △ = ST205/75R15B

**UVW (Unloaded Vehicle Weight):** The weight of the unit with no fluids, cargo, optional equipment or accessories.

**GVWR (Gross Vehicle Weight Rating):** The maximum permissible weight of the unit, including the UVW plus all fluids, cargo, optional equipment and accessories. For safety and product performance, do not exceed the GVWR.

**Carrying Capacity:** The difference between the UVW and the GVWR. This is the amount of weight available for all fluids, cargo, optional equipment and accessories. The actual "loaded" weight will depend on the equipped unit and the owner's individual choice of cargo, etc.

**Wider Widths:** Numerous Coachmen floorplans feature the "wide body" design concept, which gives you significantly enhanced interior living space and innovative floorplans.

In making your purchase decision, you should be aware that a few states restrict access on some or all state

● = ST225/75R15C ○ = ST205/175R15C □ = LT245/75R16E X = ST225/75R15D

roads to 96" in width, though special road usage permits are generally available. Vehicles up to 102" in width are permitted on all federal highways, and in the vast majority of states. You may wish to confirm the road usage laws in the states of interest to you before making your purchase decision. If width is of concern to you, we invite you to consider the broad array of other Coachmen models offered in the standard 96" width.

All information contained in this brochure is believed to be accurate at the time of publication. However, during the model year, it may be necessary to make revisions and Coachmen reserves the right to make all such changes without notice, including changes in prices, colors, materials, equipment and specifications, as well as the addition of new models and the discontinuance of models shown in this brochure. Therefore, please consult with your Coachmen dealer and confirm the existence of any materials, design or specifications that are material to your purchase decision.

## STANDARD FEATURES

### INTERIOR AND DECOR

- Golden Cherry Cabinets
- Residential Metal Drawer Glides
- Carpet with Pad - Living Room
- Carpet - Bedroom
- Mini Blinds - Coach
- Mini Blinds - Bedroom
- Linoleum Flooring - Kitchen & Bath
- Mini Blind - Kitchen
- Radius Windows
- Side Dinette (Except 319RL)
- Free-Standing Dinette (319RL)
- Jack Knife Sofa
- Swivel Rocker (Except 237, 269, 279)
- Four Prewired Stereo Speakers
- Cable TV Jack
- TV Antenna and Rotor Package
- TV Shelf - Bedroom
- LP Leak Alarm
- Trash Can (285 & Larger)

### GALLEY

- Microwave Ready
- 3-Burner (High Output) Range with Oven
- Power/Lighted Range Hood
- Flush Mount, Double Door Refrigerator
- Monitor Panel
- Stainless Steel Sink
- Silverware Drawer

### SLEEPING

- Queen Bed (Except 237RL)
- Double Bed (237RL)
- Deluxe Innerspring Mattress - 312 Coil
- Bedsprad and Pillow Shams
- Bedlift System on Island DB or QB

### ELECTRICAL / HEATING / AC

- 30-Amp. Power Cord
- GFI Circuit
- Outside Receptacle GFI
- Patio Light

- Off-Door-Side Utility Light
- Hitch Light
- Double 30 LB LP Bottles w/Auto Change-Over
- 25,000 BTU E.I. Furnace (237RL - 251RL)
- 31,000 BTU E.I. Furnace (269RL - 319RL)
- 35,000 BTU E.I. Furnace (320RK)
- 40,000 BTU E.I. Furnace (360RL)
- In-Floor Ducted Heat
- Prewired for Roof AC

### BATH AND WATER

- Marine Toilet
- Power Bath Vent
- 6-Gallon Water Heater
- Water Heater By-Pass Valve
- One-Piece ABS Tub Surround
- Demand Water Pump
- Decorative Bath Hardware
- Medicine Cabinet

### EXTERIOR / CONSTRUCTION

- Rubber Roof
- Fiberglass Insulation
- Awning Rail
- Triple Entry Step - Primary Door (Slide Models)
- Dead Bolt Lock(s)
- Rear Hose Storage Steel Bumper
- Manual Slide Room (237RL, 269RL)
- Prewired for Electric Slide Room (237RL, 269RL)
- Hydraulic Slide Room (Except 237RL, 269RL)
- Retractable Stabilizer Jacks (Opt. on 275RK, 279TB)
- 30" Wide Entrance Door
- Radial Tires
- Rally Wheels

## OPTIONAL FEATURES

- Twin Beds (Except 237RL, 319RL, 279TB)
- Two Bar Stools (237RL, 269RL)
- Free Standing Dinette w/2 Chairs (275RK)
- Free Standing Dinette w/4 Chairs (Except 275RK, 279TB)(Std. 319RL)
- Rear Lounge (237RL) (Includes Two Swivel Rockers and a Jack Knife Sofa)
- Deluxe Sofa w/Hide-A-Bed (Slide Models) (Except 237RL, 269RL)
- Wall Hugger Recliner (Except 237, 269, 279)
- 2nd Wall Hugger Recliner (360RW)
- Residential AM/FM Cassette Stereo
- Outside Entertainment Center
- Combo Washer/Dryer (320, 360) (Includes Plumbing and 10 Gallon Gas/Electric E.I. Water Heater) (Requires 50 Amp. Service in California)
- Phone Jack (285RK and Larger)
- Large, Flush Mount, Double Door Refer (269RL and Larger)
- Residential Size Microwave Oven - 1.3 Cubic Foot
- 6-Gallon Gas/Elec. E.I. Water Heater
- 6-Gallon E.I. Water Heater
- Walk Thru Bath (278, 285, 320) (On 320RK, WTB is only Available w/ Bedroom Slide Option)
- Outside Shower
- Foam Core Insulation Package
- Tinted Safety Glass - Radius Windows (Safety Glass is Mandatory in Certain States)
- Ducted Roof Air Conditioning (Except 237)
- 13,500 BTU Roof Air Conditioner (237 Only) (Not Available w/Ducted A/C)
- Second 13,500 BTU Roof Air Conditioner (275RK & Up) (Requires 50 Amp. Service in California)
- Wire and Frame for 2nd AC (275RK & Up) (Requires 50 Amp. Service in California) (Mandatory w/Ducted Roof A/C on 360RK & 370RL)
- 7.0 Generator (319 & Larger)
- Generator Ready (319 & Larger)
- 50 Amp. Service (275 & Larger) (Mandatory with 2nd Roof A/C and Wire and Frame for 2nd A/C Options)
- Bedroom Slide-Out (319, 320, 360) (On 320RK the WTB & Bedroom Slide Options Must be Ordered in Combination)
- Electric Slide-Out Room (237RL, 269RL)
- Electric Front Jacks
- Spare Tire Kit (237RL)
- Spare Tire Kit (251 - 319)
- Spare Tire Kit (320 & Larger) (16" Wheels)
- Luggage Rack and Ladder
- Retractable Stabilizer Jacks (275RK, 279TB) (Std w/Slide-Outs)
- Shock Absorbers (Except 237RL)
- Awning (Not Available on Wide-Body Units Shipped to Canada)
- Slide-Out Room Awning (237RL, 269RL)
- Slide-Out Room Awning (251, 278, 285, 319, 320, 360)
- Slide-Out Room Awning - Bedroom (319, 320, 360)
- CSA Upfit



Coachmen Recreational Vehicle Company • P.O. Box 30, Middlebury, IN 46540

© 1996 Coachmen Recreational Vehicle Company Litho in U.S.A. 1096



# WHAT YOU CAN'T SEE US

We believe in our products and back them with a two year structural warranty.

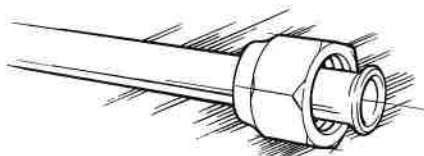
We deck our entire roof to add strength and to assure a smooth roof, which improves water run off.

Our truss roof rafters are similar to home construction and offer terrific strength.

Our entry door is 30" wide, has an integrated drip rail and is painted to avoid unattractive metal oxidation which occurs on unpainted door frames.

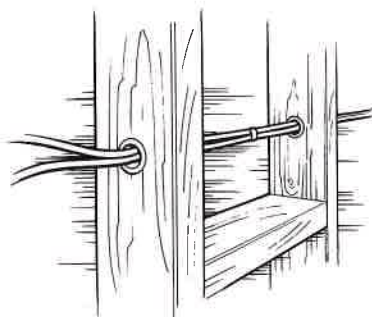
Wood cabinets, with screwed (not stapled!) fronts are securely mounted to backing in the sidewalls.

We use top quality, #2 grade spruce lumber on 16" centers.



All copper LP lines with double flare fittings help assure no rust will get into and damage your appliances the way black steel LP lines can.

We insulate around every refrigerator to improve operating efficiency and prolong the trouble free life of the refrigerator.



Metal sleeves in wall studs protect all 110 volt wiring.

Take a look under the floor at our well organized and secure electrical wiring and LP lines.

Weyerhaeuser Structurwood Floors come in 24 foot lengths to eliminate seams and create a floor 10% stronger than plywood.

Aluminum floor ducting distributes heat throughout the unit from a centrally located electronic ignition furnace.



& FIFTH WHEELS

QUALITY

# UALLY COUNTS THE MOST.

Coachmen "Even Cool" ducted roof air conditioning provides quiet, cool air that easily distributes through the entire motorhome through baffled ducting.

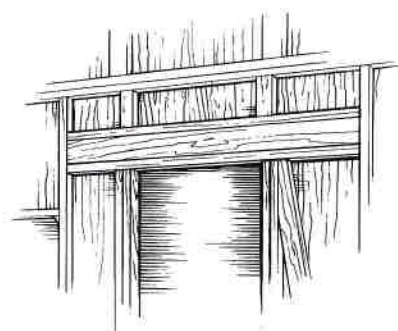
Seamless rubber roofs are crowned to allow controlled water run-off, which helps prevent leaks.

Baked enamel aluminum with no vertical seams in the metal, eliminates leak areas.

A 2" x 10" header called Timberstrand assures a precisely straight and strong support for our slideroom opening.

We taper the slideroom roof to assure controlled water run-off.

All roof seams are sealed with butyl rubber based sealants that expand and contract with the climate to help prevent leaks.



Entrance doors are framed for long term durability with 2" x 6" headers and 2" x 4" door jambs.

Owens-Corning fiberglass insulation, with an R-7 rating, is carefully hand packed between each stud.

We use only radius clamp ring windows which have no exterior fasteners or screw covers.

Windows in the slideroom sidewall provide an open feeling and are always slide windows (not jalousie) to prevent accidents when moving your slideroom.

All wheel wells are sealed and undercoated with Kendall Automotive Sound & Seal.

Slide room floors are framed in tubular steel and laminated in a state of the art, hot melt urethane system.

We wrap the entire underbelly with an extremely tear resistant, fiber laminated, polypropylene material called Darco.

Tubular steel framing, with full width steel outriggers and cross members provide a reliable foundation to build upon.

All storage doors have latches to hold the door open which makes access to the storage areas easier.

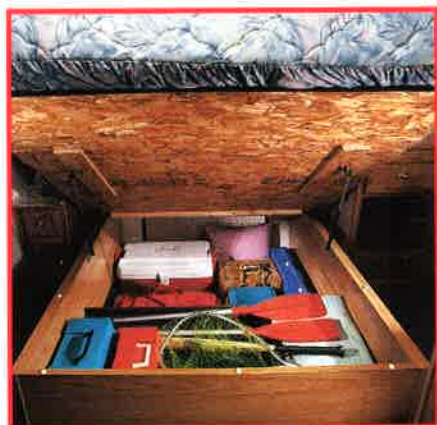


# AND MORE FEATURES!



◀ The optional microwave oven boasts a huge 1.3 cu.ft. interior space, making preparation of large dishes a breeze.

Another Coachmen innovation is the fantastic under-sink silverware and utensil drawer. ▶



◀ Most Catalina beds are equipped with a bed-lift storage system that features hydraulic cylinder lift struts for ease of operation.

The three-burner range with a ▶ high-output front burner has space for large pots and enough capacity to quickly heat the contents. All drawers, such as this large pots and pans storage drawer feature metal and caster slide systems for superior operation.



## BUYER'S CHECKLIST

To help you make an informed purchase decision you'll enjoy for many years to come, refer to this list of Coachmen features. Please compare us to the competition!

- ✓ Hydraulic Slide Room System on all double and super slides
- ✓ Seamless exterior metal
- ✓ Box-channel cambered steel frame, primed and painted with two coats
- ✓ Darco undercarriage shield
- ✓ Wheel-well undercoating
- ✓ Copper L.P. lines; entire system
- ✓ Crowned, seamless rubber roof for water protection
- ✓ Roof rain gutters and down spouts
- ✓ Owens-Corning R-7 insulation, hand cut and packed
- ✓ 2"x2" North American #2 grade wall studs, on 16" centers
- ✓ 2"x 6" door headers with 2"x 4" door jambs
- ✓ 30" wide entrance door
- ✓ Finished and sealed exterior storage compartments
- ✓ Heavy-duty, stain resistant upholstery
- ✓ Stain-repellent carpet and superior padding
- ✓ Optimum window design; sliders and jalousies
- ✓ Wood door frame/cabinet construction
- ✓ Semi-trackless carpet with stain repellent
- ✓ Mini blind and hard valance window treatment
- ✓ Residential drawer glide system
- ✓ Silverware and utensil drawer
- ✓ Tub/shower liner
- ✓ Bed lift system
- ✓ Extensive 12V and 110V lighting
- ✓ Deluxe 312 coil innerspring mattress
- ✓ Two-Year Structural Warranty

## UP-FRONT DESIGN FOR LONG TERM COMFORT.

Founded in 1964, Coachmen is one of the oldest, continuous producing manufacturers of recreational vehicles. A secret of our success is our commitment to the continuous improvement of our products.

With over three decades of experience, we have learned that quality must be designed and built *in to* the products, up front. Combining our experience with the latest technological advances, we are able to prevent problems before they arise, through proper analysis and testing. Coachmen goes the extra mile to provide our customers with quality products.

### DESIGN & ANALYSIS

It is now fairly common for companies to use C.A.D. as a drafting tool. Coachmen, however, takes computerized technology far beyond elementary applications.

Through significant capital and manpower investments, Coachmen uses computers to see that everything fits—up front—so we can minimize gimp, trims and other “cover-up” techniques seen so often in other brands.

We also use the computer for advance testing made possible by technology programming. **Weight testing** is performed on every new model. Before a floorplan is approved for production, we know the approximate weights, including dry and loaded, front and rear axle weights and even side-to-side weights which affect towability. After a model is built, the computer analysis is manually verified.

Another important use of the com-

puter is Coachmen's unique utilization of **Finite Element Analysis**.

This technique, based on computer modeling, enables Coachmen to predict, and avoid, many problems caused by inappropriate stress.

Examples of analysis and proof of validity include our cambered frame and cross-member design, the thickness and

composition of our flooring

and our slide rooms and their impact on the structural integrity of the entire coach.

With this investment in technology, we try to anticipate and solve problems before they occur.

### LEAK PREVENTION

Due to the complexity of the product, compounded by road vibration, water leaks can be a problem. Coachmen's quest is to eliminate this frustrating and potentially damaging problem.



Our outer skins are seamless, and every corner—at the roof, floor and sidewalls—is wrapped, sealed and secured. All roof and sidewall openings receive framing reinforcement,

and are sealed with a non-shrinking, pliable silicone.

Finally, every unit we produce is tested for leaks in a high-pressure rain chamber, designed to simulate a driving rain, not just a spring shower.



### PERFORMANCE TESTING

Coachmen does not want, nor expect, our customers to be the “proving ground.” We believe it is our job to adequately test our products, before they reach our customers.

Coachmen subjects its new models to a myriad of advance tests, before introduction to the customer. Rigorous road tests, sometimes up to 15,000 simulated miles, are performed on actual production units, to verify computer modeling. Studies are made of structural integrity, stress analysis, cabinetry durability, weight loading, vibration analysis and handling.

There can be little doubt that Coachmen has superior quality—by design.



# LONG TERM ENJOYMENT

## A WARRANTY TO COUNT ON.

### BUCKSTOPPER WARRANTY

We work very hard to see that our products out-perform your expectations. But, should something go wrong with the workmanship or materials during the warranty period, we will fix it. As the saying goes, the buck stops here.

Your Owner's Registration Card and our famous Buckstopper Warranty are your passport to worry-free travel. Throughout the United States and Canada, our network of over 300 independent dealers stands ready to provide you with courteous, dependable service.



### TWO-YEAR STRUCTURAL WARRANTY

We are very confident about our products, for reasons explained in this brochure. Our owners share in our confidence, with Coachmen's exclusive TWO-YEAR LIMITED STRUCTURAL WARRANTY. Only with Coachmen do you receive extended peace of mind and warranty coverage for your floor, ceiling assembly and any laminated structural components.

### TRANSFERABLE WARRANTY

Your Buckstopper Warranty may be transferred to a subsequent owner for a small registration fee, if you sell your coach during the term of your one-year Buckstopper Warranty. This feature greatly enhances the resale value of your Coachmen product. (Sorry, the Extended Limited Structural Warranty may not be transferred.)

When making your purchase decision, you should select a company you can count on, with a warranty you can depend on. **Nobody protects you better than Coachmen...for the long haul!**

See your Coachmen dealer for complete details on our generous warranty program.

## FRIENDS & FUN FOR LIFE.

Your purchase of a Coachmen recreational vehicle qualifies you for a **free, one-year membership** in the International Coachmen Caravan, one of the nation's largest RV clubs. Consisting of over 10,000 member families, the Coachmen Caravan was

formed in 1966 to help our owners enjoy RV ownership to the fullest.

With Coachmen, unlimited opportunities exist for you and your family to form lifelong friendships; improve and share your unique talents, skills and crafts; be active in running your

club; and exchange ideas, information and helpful hints—all these, plus the many benefits outlined below, are uniquely yours through the International Coachmen Caravan.

### INCREDIBLE MEMBERSHIP BENEFITS!

In addition to automatically expanding your circle of friends, your Caravan membership brings you a multitude of benefits:

- Free \$5,000 Accidental Death and Dismemberment Insurance policy, with additional policies available for \$5 a year.
- Emergency road service and RV insurance at low rates.
- Free trip-planning service.
- 10% Discounts at over 2,500 campgrounds in the U.S. and Canada.
- Free annual Campground Directory.
- Hassle-free group travel to popular destinations.

- Free lost-key return service.
- Organized campouts, meetings and parties.
- Free subscription to COACHMEN CAPERS, the club's quarterly magazine.
- Annual International Rally Week.
- Free I.D. card, Caravan key ring, vehicle decals and I.D. numbers.
- A Coachmen Caravan MasterCard with no annual fee and low interest.
- Discounts on club clothing, accessories, film developing and selected RV publications.



THE COMPANY

# COACHMEN: LEADER TO THE GREAT OUTDOORS.

Coachmen Recreational Vehicle Company has manufacturing facilities in Middlebury, Indiana, Fitzgerald, Georgia, and Grants Pass, Oregon, and occupies over 600,000 square feet on nearly 120 acres. The Coachmen name is one of the most recognized names in our industry, and our products provide recreational enjoyment throughout North America and Europe.

From our beginning in 1964, we have been, "Dedicated to the Enrichment of Your Life." You will find proof of this dedication in our innovative and user-friendly products and our smorgasbord of customer benefits and services.

We are driven by a deep concern for your safety, comfort, pride of ownership and pleasure—in short, **your satisfaction.**

Coachmen knows what it takes to make an RV great. Join us! We'll lead the way to the great outdoors.



Come visit us at our new Oregon facility (above left), our Georgia facility (above right), or our Complex in Indiana (top) where you can relax at our Visitor's Center (above center) and enjoy guided tours of the assembly plants.

## MEET PETE THE COACHMEN DALMATIAN.

Pete, the Dalmatian, has been a vital part of Coachmen since 1964, when he joined our newly formed company as watchdog, playmate and friend.

Pete became our official mascot when we learned that, coincidentally, the

Dalmatian is the official "coach dog."

Since then, Pete has guided Coachmen and America to the best in products, quality and customer satisfaction.

Follow Pete to the Great Outdoors.



JERRY'S TRAILERS & CAMPERS

2601 S. 13th St.

Norfolk, NE 68701



Recreational Vehicle Company

P.O. Box 30, Middlebury, IN 46540 • P.O. Box 948, Fitzgerald, GA 31750

